

THE ALMANIAN

THE STUDENT PUBLICATION OF ALMA COLLEGE

VOLUME SEVENTEEN

ALMA, MICHIGAN, TUESDAY, MARCH 18, 1924.

NUMBER TWENTY-ONE

POST-SEASON TILT IS WON BY ALMA

QUINTET TAKES THE HIGHLAND PARK ALL-STARS INTO CAMP BY 43-17 SCORE.

Playing the Congregationalists All Stars, champions of their league, at Highland Park, Saturday evening, as a benefit to aid the Highland Park High School Senior class to go to Washington, was a mere pass time for Coach Campbell's Champions Saturday night, the Maroon and Cream winning 43 to 17.

During the first half the game was close and hard fought, the session ending 19 to 13, but in the second half the Champs opened up and 'did their stuff.' Not until the closing moments of the game did the All Stars manage to break into the scoring column, when two field baskets rolled their count to 17. Alma meantime had been piling up a commanding lead.

On the All Star cast were Piper of the University of Michigan, and Dickerson, Wills and L. Allum of Highland Park Junior College. Dickerson and L. Allum two years ago were on the all state high school team.

Alma-43	Pos	Stars-17
Van Hee	LF	Dickerson
Carty	RF	Wills
MacDonald	CL	Allum
Shaver	LG	Piper
Welthoelder	LG	Showcross

Substitutions—R. Catherman for Van Hee, Wright for R. Catherman, H. Catherman for Welthoelder.

Referees—Myers of Hillsdale and Whittiker.

Field baskets—Carty 7, Shaver 4, Welthoelder 4, MacDonald 2, H. Catherman 1, Van Hee 1, Wills 3, L. Allum 3, Dickerson 1.

Fouls—Carty 2 in 2, MacDonald 2 in 3, Van Hee 1 in 1, Wills 1 in 2, Allum 2 in 3, Piper 1 in 2.



CAPT. "RED" CARTY

Monday afternoon the eight letter men of the squad of the Alma College basketball team, 1924 champions of the Michigan Intercollegiate elected captain Arthur "Red" Carty of this years aggregation to pilot the Maroon and Cream during the 1925 campaign, in which it is hoped to bring another cage title to the Alma camp.

Carty, both last year and this year, has been named on the All Michigan Intercollegiate basketball team, at forwards, and this year was the only man unanimously selected by the coaches of the association to the star cast. He has played both forward and guard this year, the latter position in only two or three games, however. Carty is the high scorer this year in the Michigan Intercollegiate.

"Red" like other Alma captains is a three sport man, starting in football, basket ball and base ball. Other

THE CHAMPS



three sport captains of Alma are Wright, who led the football team to the championship last fall, Cuddy Shaver, who will lead the base ball team this spring, and MacDonald, who will lead the gridiron champs next fall.

Carty, who is a Junior in Alma College this year, is a graduate of Detroit Northwestern High, and one of the most able athletes that Burg has produced in some time.

CARTY HIGH SCORER

Captain Red Carty is the high scoring Ace of the Michigan Intercollegiate Champions of 1924 with 249 of his teams points. Van Hee is second in the list with over 100 points to his credit. The scoring records follow:

Player	F.B.	Fouls	Points
Carty	100	49	249
Van Hee	49	15	113
Shaver	38	4	80
Welthoelder	28	3	59
R. Catherman	24	1	49
MacDonald	25	4	54
Wright	17	3	37
Elias	16	4	36
H. Catherman	6	1	13
Lemon	3	2	8
Tebo	1	1	3
Davis	1	0	2
Totals	308	88	704

Concert Puts Kick in Friday Nite Bounce

The Alma College Band presented a gala appearance last Friday evening, when their First Annual Concert Dance was held in the local gymnasium. During the first portion of the programme, Wolfe's Torrid Troubadours filled the atmosphere of the auditorium with reels of throbbing lyric ecstasy, while more than three-score couples commanded the floor.

The interior was very neatly decked in the college colors, and the high white arc-lights were supplemented by a chain of colored bulbs upon the walls.

During the intermission, the personnel of the band led by Director Ewer mounted the rostrum which was attractively caged with Maroon (Continued on page four)

Y. W. C. A. Elects Officers for New Year

The regular meeting of the Young Women's Christian Association was called to order Thursday evening to elect officers for the coming year. They are as follows:

President—LoReta Neely
 Vice-Pres.—Eunice Houghton
 Secretary—Winifred Porter
 Treasurer—Helen Courtade
 Undergraduate Representative—Esther Oldt.

COURT SEASON HAS MANY HIGH SPOTS

ALMA BASKETEERS PILE UP 20 VICTORIES FOR GRAND AVERAGE OF .909.

The Michigan Intercollegiate Basketball Champions!

The 1924 season marks the first time that an Alma team has ever held undisputed sway of the courts of the Michigan Intercollegiate Athletic Association, the Maroon and Cream picking off the court honors with a two full game lead over the Michigan State Normal outfit which finished in second place.

And, probably, Alma's crack aggregation has as good a claim to the all state college title as any other team. The all state honors are in such a muddle that it would be idle in fact useless—for any team to advance a claim to those honors.

Nine games won out of ten contests in the Michigan Intercollegiate race let the team finish with an association standing of .909 and 20 victories in 22 games over the entire list of scheduled contests, gives the team a grand average for the entire season of .909. It is on this that Alma's best claim to an all state college title could be best based. No other Michigan collegiate aggregation can show such a standing over its entire season.

Because of Alma finishing as runner-up for the title last year it was expected early that she would be a real contender for the honors this year, and a highly brilliant holiday trip bore out this expectation and marked the Alma clan as probably one of the most dangerous teams of the entire state.

The holiday trip opened with Alma smearing Bay City Junior at Bay City 46 to 6. When the crack Wyandotte Independents fell 31 to 21. Going into Detroit, Alma toppled Detroit College of Law 31 to 25. The Morley-Maxwells fell 51 to 27, a big surprise. Detroit Y led Alma until the last three minutes and a big rally put Alma in front 31 to 27. The biggest surprise of the trip was the final game with the Detroit Winter Gardens, who had such men as Castle of Syracuse, Unger of Penn, etc. This team fell to the battling Almatites 31 to 28. From then on Alma was expected to take the association rag.

In the first home game Saginaw Triangles fell 37 to 23. Albion was defeated in the first M. I. A. A. game 29 to 20. A road trip saw Alma

defeat Hillsdale on the first night 28 to 14, and then the slump came and Alma lost two games. Ypsilanti Normal won an association game 32 to 28, and before Alma recovered the University of Detroit defeated the Maroon and Cream 36 to 23.

From then on Alma marched to one victory to another. Mt. Pleasant Normal, unbeaten to that time, except for a single point victory by the Michigan Aggies at East Lansing, fell on the Teachers floor 21 to 18. The next week on the Alma floor the Teachers again fell before Alma, but Mt. Pleasant forced the Maroon and Cream into three overtime periods to win 22 to 20. Hillsdale was defeated on the Alma floor 31 to 15. Flint Junior was no match for Alma the score being 35 to 12. Kalamazoo's 10 year champions on the Alma floor took the worst defeat (Continued on page four)

Alpha Theta Play Is Well Received

"WHY NOT JIM?"
 A farce comedy by Helen B. Bagz presented by the Alpha Theta Literary Society in the college chapel Saturday night, March 15. The cast:
 Mrs. Gordon, a widow.....Ethel West
 Paula Harmon, her daughter Ann Lyons
 Edna Fraser, her second daughter
 Hildegard Finch
 Vivian Gordon.....Dorothea Young
 Gertrude Price.....Eunice Watkins
 Alice, a maid.....Marjorie Watkins
 Alec Fraser, A young author,
 husband of Edna.....Virginia Tremaine
 Charles Ramsay, a friend of the family.....Gladys Fryxell
 James Barry.....Beulah Watson
 Scene: Mrs. Gordon's summer home.

"Why Not Jim?" a one act farce presented by the Alpha Theta Society drew a large audience at the chapel last Saturday evening. The play was the first that any organization has presented this year. All parts were played with a cleverness and attractiveness which only Alpha Theta is able to do. With a re-decorating of the chapel stage, a very effective scene in a summer home was attractively produced. The men's role as portrayed in several of the characters was the feature of the play with all parts being acted perfectly.

The play starting with the spirited enthusiasm of the women of the house-hold before the arrival of Count Cashmere who is going to entertain them with his palmistry is broken up by the disgust of the men. When the Count wires his inability to be present, the men arrange for the disguising of an old friend as the Count later appears only to be finally apprehended by the secretary. Miss Beulah Watson in the role of the count, cleverly plays the part, being well assisted by her men accomplices, Miss Fryxell and Miss Tremaine.

CARTY AND SHAVER ON ALL STAR TEAM

TWO ALMA STARS ARE PICKED FOR ALL-M. I. A. A. SQUAD. McDONALD ON SECOND.

An All Michigan Intercollegiate basket ball team composed of the selections of the six coaches of the Michigan Intercollegiate compiled by Homer Dunham, shows Alma College leading with two selections on the first all honor team, these being Capt. Carty and Shaver. Albion, Kalamazoo College and Hillsdale College each landed one man on the mythical team.

On the second team Kalamazoo is awarded two players, Michigan State Normal two, and Alma one, MacDonald. Men named by the coaches but failing to make a place on either team are given honorable mention.

First Team—

Forwards—Carty, Alma (Capt) and Reece, Hillsdale.

Center—Fisher, Albion.

Guards—Shaver, Alma; and H. Vorhees, Kalamazoo College.

Second Team—

Forwards—Merkley, Kalamazoo, and Davidson, M. S. Normal.

Center—Casey Vorhees, Kalamazoo College.

Guards—MacDonald, Alma, and Weeber, Michigan State Normal.

Honorable mention— forwards: Russell Catherman of Alma, Draper and Barclay of Michigan State Normal and Black of Kalamazoo.

Guards: Gibbons of Olivet, Pre-shaw of Albion, Reynolds of Hillsdale, Ludwig of Kalamazoo and Lan-peus of Michigan State Normal.

Centers: Williamson of Michigan State Normal and Gettings of Hillsdale.

Capt. Carty of Alma is the only man who achieved the feat of a selection for the first team from every coach. He is awarded the captaincy of the honor five as a result. Reece his running mate at forward was named on the first team by four coaches and on the second team by the other two.

Fisher of Albion named three times as a center and once as a forward had a clear cut edge over Casey Vorhees of Kalamazoo.

Shaver of Alma had four first picks leading all of the guards. Vorhees was picked three times.

It should be said in full justice to MacDonald and Welthoelder that football injuries (dislocations of their shoulders) prevented them in all probability from placing better in the selections this year.

This year marks the first time in 10 years that Kalamazoo College has not drawn more places on the all association team than any other college. Now Alma is the King Bee.



"CUDDY" SHAVER

MAR 18 1924



THE ALMANIAN
The Student Publication of Alma College
Published Weekly by the
ALMANIAN PUBLISHING CO.
ALMA, MICH.

ALMANIAN STAFF
Editor.....S. A. SHOEMAKER
Associate Editor.....ROGER COLE
Associate Editor.....WM. WOODHOUSE
Associate Editor.....WILMER PATTON
Associate Editor.....P. D. GESNER
Business Manager.....E. A. CROOKS
Asst. Bus. Mgr.....CARLTON NEELAND
Athletic Editor.....HOMER DUNHAM
Campus Editor.....J. G. COUTURE
Wright Hall.....KATHERINE JENKINS
Circulation Mgr.....RUTH ALLEN

Entered as second class matter, Sept. 24, 1907.
Act of 1879, Alma, Mich.

"NEXT"

"After the championship comes the lull." This is not a Chinese proverb, much less a spark of wisdom from Omar Khayam; it is a law which seems to be working itself out on the Alma campus. Our athletic teams have now won three state championships in a row, which is quite a showing, with the schedule for the year not yet completed. After each has come a lull in spirit.

After the winning of the base ball pennant last spring it could hardly be said whether there was a lull or not, because the college year was ended at practically the same time. But the law is infallible, and would have been evidenced if classes and the other activities of the college had gone on as before.

Then in the fall, Alma's mighty gridiron machine ploughed its triumphant way through the ranks of other college teams unscathed, unscoring on. It is the first championship football team Alma has had since 1917, and the lightest in the M. I. A. A. this year, another record that is liable to stand for a long time. Alma pep was high at the championship game at Albion. It reached the climax there, and then, when we could "hear the flag flapping in the wind," we suffered a relapse that lasted well into the basket ball season. Mass meetings suffered for lack of attendance, and the old spirit was not really aroused until we saw that another Championship team was living in our midst.

The basket ball title was hotly contested for a while. But the Alma quintet pulled through the tight places, fighting every game in the same spirit with which the Albion game was won last fall, and the second championship of the year was brought back to Alma, to inspire us to praise for a while, and cause another lull and lapse of pep. It would seem that we are "fed up" on athletics, and don't care to support our teams until they begin to show championship form. Such is not truly the case, and we should not let the teams feel that we are unappreciative of their efforts early in the season, which are undoubtedly the hardest.

Spring vacation is just ahead, and with the good weather that will follow(?) base ball practice will start. We have all the necessary materials for a championship team again this spring. It is up to the rest of us, who can't play the game quite as well as our last year's champs and must therefore stay on the sidelines, to see that the lull doesn't appear this time. Let's start the season with a show of loyalty and pep that is good right up to the championship days, and back the men who have brought us glory enough already.

Tebo Becomes New Y. M. C. A. President

The members of the Y. M. C. A. assembled last Thursday evening in Dean Mitchell's room where they held their annual election of officers for the coming year. The election was held before the regular meeting and it was one of the best elections held in Alma College in any years. Owing to the fact that the Y. M. C. A. has withdrawn its membership from the boards of control upon the campus there was no so called "politics" in the election. The spirit which was manifest throughout the voting was that of putting the man in the office who was best fitted for the position. As the Y. M. C. A. now stands no one can say that it is run by the Phi Phi Alpha or Zeta Sigma or one of the various other society organizations on the campus.

The men nominated for the presidency were Tebo and Andrews. These two men have been very active in the work during the year and it was believed that either one of them would fill the office very efficiently. But just before the ballots were cast Andrews arose and withdrew his name and a unanimous ballot was cast for Tebo, as president for the coming year. The men nominated for the office of vice president were Calkins, Apsey and Andrews. After the ballots were counted the votes were found to be majority for Calkins. The race for the Secretary was very close between Burton and Campbell, Burton getting thirteen and Campbell nineteen. The office of Treasurer fell to Harris who received

ed twenty-two vote to nine received by Anderson.

After the election was over the men enjoyed a very interesting and beneficial talk by Professor Hamilton. His talk had a great number of pointers for the new officers which came to him from experience. During his college career he looked upon the Y. M. C. A. as a mutual self congratulation society of which the genius was the student leadership. The field for this leadership was with students and in this way one student had more influence upon another than some outsider would have. He experienced the same difficulties while in college that we have had here for the last few years and he told how they overcame this difficulty. They finally elected a president who had the work at heart and during the year he canvassed the entire male student body and when the year closed he had built up the Y to the former standing.

The remainder of the talk dealt with the problems which we have to solve here on the Alma College campus. He stressed two main points of attack upon these problems. One was to make the Y a social force on the campus. The other was to have a programme which would reach every individual upon the campus. In order to make the Y a social force upon the campus the head of the social committees should be a Christian leader. This man should plan his work ahead and present a plan for the coming fall and in this way it would help a great deal in the get-together in the fall of the year. To accomplish the second of these aims the organization of the Y ought to be made up of strong committees and these to be organized effectively. These committees must function all of the time and not one now and the other next time. All must work as a unit for the advancement of the Y. The speaker believed that a start toward this end was accomplished this year and that in the group meeting that are held the men like to get together and talk over the various problems and get the various views of others. On such things as the Y. M. C. A. would present it is believed that the men would talk very seriously and some benefit is sure to be derived therefore.

The meeting was closed by the benediction and the men journeyed to the European Cafe where they were

participants in a light feed comprising roast pork, dressing, pie and coffee. Thus was drawn to a close one of the best elections that has been held in Alma College in many years.

Ashes to ashes, and nuts to nuts, Buying gum, you pay for the wrappers, Cigars, you pay for the butts.

SUMMER POSITIONS FOR STUDENTS

Students to work in the interest of Religious Education in the Home and to Distribute Religious Literature. Definite guarantee of a liberal amount with opportunity of earning several times as much. Last Summer several students earned over \$1000.00 during vacation. No capital nor experience necessary. Also opportunity to travel and appoint representatives. Write for full particulars and organization plan at once.

UNIVERSAL BIBLE HOUSE,
(College Dept.)
1010 Arch St., Philadelphia

**J. E. CONVERSE
JEWELER**

New
Harding
Crepe,
all
colors,
yard
wide

\$1.98

PROUD'S



Rent a Ford
Drive it yourself

PUTNAM BROS.
412 Pine St. Phone 18
Taxi Service
Baggage Transfer

Mah-Jong

Is Taking the Country By Storm
A complete set in bright colors, 144 tiles, 116 counters, 8 racks, 2 dice, book of rules and instructions; any one can learn the game in ten minutes. It's very fascinating. All in attractive box, sent prepaid on receipt of \$1.00 (Canada 25c extra).

\$1

Table Covers

Very Attractive Black Sateen Mah-Jong Table Cover, with colored dragon designs, adjustable to any size card table; 16 counter pockets, striking colored stitched edges. Extraordinary value. Special price...

\$2

COMBINATION OFFER: We will prepaid one complete Mah-Jong set and table cover as described above on receipt of \$2.50.
China-American Importing Co.
111 West 68th St. New York

THE STRAND THEATER

TUESDAY
(Last Day)

Barney Bernard

-in-

"Potash and Perlmutter"

Leather Pushers

WEDNESDAY

The
Community Players

THURSDAY & FRIDAY
THOS H. INCE

Special

"Her Reputation"

Fun From the Press
Fox News

ALMA STATE SAVINGS BANK

Capital \$50,000—Surplus \$30,000.00

WE PAY 4% ON
TIME DEPOSITS

SAFETY BOXES
FOR RENT

THE WRIGHT HOUSE

Alma's Best Hotel

For the Best in
**BARBER
WORK**
See Us.

We give you SERVICE with three chairs in a clean, healthy shop.

Open until 7:30 p. m.

Butler & Dumas
Beneath the Wright House.

The Gratiot County Gas Co.

ALMA, MICH.

Artistic Picture Framing

G. V. WRIGHT

Oh Boy!

Sandwiches

On Nice Home-Made Bread.
And cookies too— **Oh Boy!**

The Tiffin Cafe'

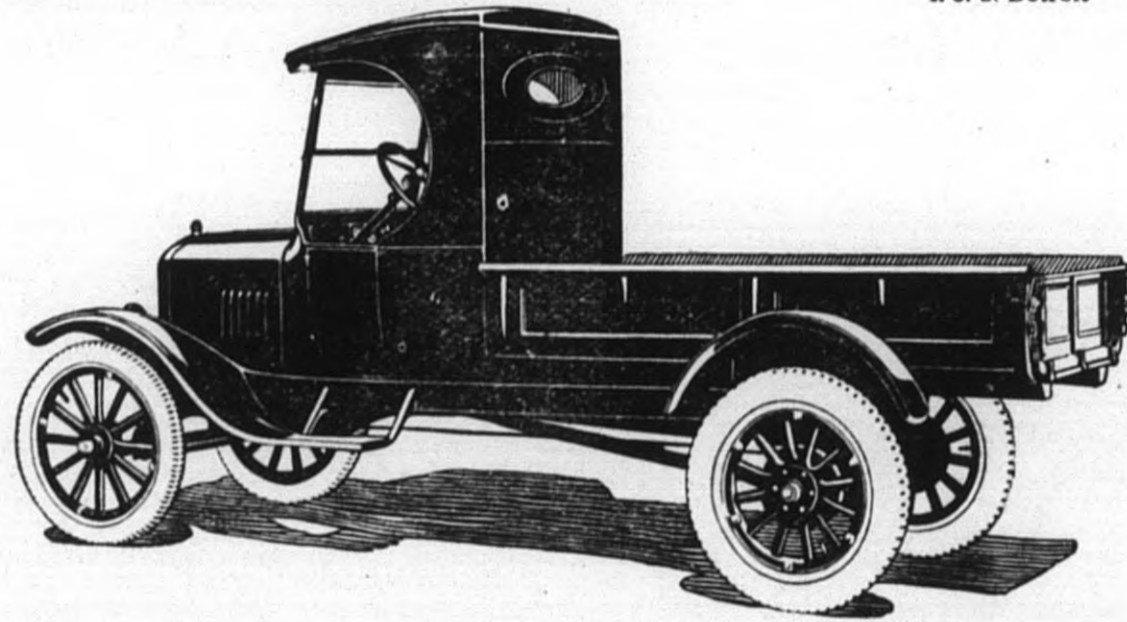
LUCHINI'S CONFECTIONERY STORE

We carry the most complete line of candy in this vicinity.

Come and see us.

**Ford Steel Body \$490
Truck**

f. o. b. Detroit



An All-Purpose Truck At A Remarkable Price

The new Ford all-steel body and cab mounted on the famous Ford One-Ton Truck chassis provide a complete all-purpose haulage unit at the remarkably low price of \$490.

Built of heavy sheet steel, strongly re-inforced, this staunch truck is designed to withstand severe usage in a wide range of industries. Generous loading space, four feet by seven feet two inches, permits easy handling of capacity loads and provision is also made for mounting of canopy top or screen sides.

Experienced drivers appreciate the weather-proof features of the steel cab, which is fitted with removable door-opening curtains,

Ford Motor Company
Detroit, Michigan

Niles Motor Sales Co.

Ford

CARS · TRUCKS · TRACTORS

FM4-C

THE ALMA COLLEGE GLEE CLUB



One of the best Glee Clubs Alma College ever turned out starts out Friday morning on its annual spring vacation trip.

Under Professor Ewer, the club has worked out a program that will furnish unusual entertainment for whoever comes to hear. The club work has been changed somewhat, and almost all of the ensemble singing is done without the aid of piano accompaniment. The harmony must be exact, therefore, because a sour

note will spoil the entire effect. So the twenty men on this year's club have been working since October perfecting the songs which they present on their tour.

As well as the club work, which constitutes the major part of the program, there are several special lies offered which give the evening entertainment spice. An excellent quartet, Hughes, West, Hudson, and Merriam, was organized, and it offers a group of light selections. Kenneth Wolfe gives a violin group. A

saxophone trio, and solos by Hudson and Bailey complete the program.

The towns the club sings to on this trip are: West Branch, Roscommon, Bay City, St. Ignace, Manistique, Marquette, Newberry, Rudyard, and Bay City and possibly two other towns in which arrangements are incomplete. In addition to this trip, the club plans a southern trip, to take in Albion, Flint, Lapeer and several towns in the Thumb, a concert at Grand Rapids during General Assembly, and a home concert.

The Newest of the New Spring
Top Coats at
\$25, \$30 and \$35. **Burkheiser's**

Capital \$100,000.00 Surplus \$100,000.00

FIRST STATE BANK

USE OUR FACILITIES
FOR HANDLING STUDENTS'
ACCOUNTS

L. A. SHARP, Pres. CARL H. WASHBURN, Cashier

There's a Flower Gift to fit
every pocketbook.

"Say it with flowers"

D. KLEINHANS FLORAL CO.

ALMA STORE 323 Woodworth Ave. GREENHOUSES St. Louis
Member Florists' Telegraph Delivery

Keep step with the latest hits
on the

VICTROLA

New Records released every Friday

SAWKINS MUSIC HOUSE

THINGS STARTED RIGHT

usually cause little trouble.
This enables us to give you

Our Guarantee of Satisfaction

covering Quality, Style and Price.

THE M. W. TANNER CO.
SAGINAW



BURGESS



Drugs and Stationery

Just received—A fresh assortment
of Gilbert's famous chocolates

NICK

will greet you about any time of night,
at the

EUROPEAN

(If you find us closed, you'll know that you should be in bed)

The finest line of Imported
and Domestic Toilet Articles
in the City—

Representing such perfumers as Houbigant, Coty, Bourjois, Kerkoff, Piver, Hudnut, Vivaudou.

Harriet Hubbard Ayer, Edna Wallace Hopper, Nelson, Armand, Colgate, and the others.

Murphy's Drug Store

Campusology

On Wednesday last, Louis Coash, who lives on W. Superior street, lost his watch. He immediately notified our officers, and within three hours, his property was returned to him. Almanian "Lost and Found" advertisements pay. Patronize our publication—Adv.

"Have you had your iron today, Tanner?"
"No, but I've chewed my nails."

A guy was so dumb that he thought the Rocky Mountain Range was a stove.

Several rules have been changed in the dormitories. At Wright hall bedroom slippers must be worn in the upper halls, and at Hotel Pioneer, no hob-nailed shoes are allowed in the ballroom.

Topsargent Nesbit of the Horse Marines has named his new horse "Imagination," because it runs away with him.

Father to son coming in at 2 a. m.
"Where have you been?"
Son—"Out for a drive."
Father—"Have a flat tire?"
Son—"No, sh; was a knockout."

Dear Pat—
Sure, and France is a great country. There is a lot to eat, and a lot drink, and vice versa. The only drawback to the place is that there are so many foreigners here.

PHI PHI ALPHA

The Phi Phi Alpha Literary Society held its regular meeting March 3. Following the business meeting the literary program was given. The question for discussion was the "Teapot Dome Oil Scandal." The society listened to a paper on the "Teapot Dome" by Nisbet. The impromptu on the question were given by Bentley and McGlone.

The society elected the following officers at the meeting held March 10.
President—Harold Bailey
Vice President—John Shroyer
Secretary—Carl Wood
Treasurer—Donald Campbell
First Critic—Phil Lewis
Second Critic—Eugene Smythe
Marshall—Forrest R. Freeman
Almanian Reporter—Elno D. McGlone
Janitor—Clifford Fildey
Ass't Janitor—Frank Prouty.

ZETA SIGMA

The regular meeting of Zeta Sigma was called to order Monday evening, March 10, by the president. The regular order of business ensued followed by an impromptu debate which developed into a spirited contest. Resolved "That Glee Club Trips were more valuable to an individual than Athletic Trips" was the subject for discussion with Rathsburg and Bowron upholding the affirmative and Crooks and Bagges on the negative team. A divided opinion on the part of the three judges gave a tie vote which made a decision impossible.

WE SEE—

That Hillsdale College is seeking a new \$200,000 gymnasium. The drive is now well under way and it is hoped that the sum will be raised before school is out in June.

Albion Takes First Place in M. D. League

The triumph of the negative team over Olivet gave Alma a tie with the same college for sixth place. Albion's Alma's standings was not among the leaders the results in the Michigan Debating League show her not to be the last, Hope finishing in cellar position with only two points.

Alma's showing was not as well as were expected by her followers with the veteran material which she had on hand to open the season. Debating a very critical subject to analyze and make judgments upon, presents very often, situations which are overlooked and a superior team is forced to accept defeat with a three to nothing rating.

However, Alma's efforts are to be praised and better luck is to be hoped for in the future.

Out of the possible twelve points which could be obtained in the Michigan Debating League no team was able to secure a perfect score. Albion was first among the field of seven starters with ten points to her credit. Kalamazoo College closely followed with nine points. Final standings for the first year of the newly established Debating League among the members were as follows: Albion 10; Kalamazoo College 9; Western State Normal School 6; Michigan State Normal School 6; Alma 4; Olivet 4; and Hope College 2.

LIBRARY NOTES

The library will not be open on Saturday afternoons following spring vacation.

All books now drawn out need to be renewed by March 21. Anyone desiring to take a reserved book for the vacation may do so by presenting a written permission from the Librarian on whose reserve it is.

The Dearborn Independent for March first has an interesting article "In the Prehistoric caves of southern France" written by Pratoency, an Alma alumnus.

KAPPA IOTA

The regular meeting of the Kappa Iota Literary Society was called to order by the President. Roll call was responded to by the explanation of an oriental custom. After a short business meeting, the following program was presented: The reading of the paper entitled, "The Oriental Dance", by Esther Smith, and "Mohammedanism" by Mary Gerow. The meeting was adjourned.

ALPHA THETA

The sophomores of the Alpha Theta Literary Society entertained the members last Monday evening. They presented a one-act play entitled, "My Dear," a pleasing little comedy with the following girls taking part: Katherine Jenkins as "Felice" with her continuous use of the exclamation "My Dear" nearly ruined the chances of the wedding marriage to "Kenneth Gerrard", which was played by Dorothy Bradley. The father of "Felice," Eunice Houghton protested in vain against the extravagances of "Phyllis" and "Margerie," Dorothy Allen and Ernestine Desjardins. Elizabeth Jenkins was a very comforting mother who evidently preferred "John Templeton" A. B. by Ruth Hamilton, as her daughter's suitor. Felice's younger brother was another character played by Miss Bradley. The play was well presented and certainly enjoyed by the audience.

Send the Almanian home.

G. B. PORTER

JEWELER and OPTOMETRIST

Daily Papers and Magazines

BE A NEWSPAPER CORRESPONDENT

with the Hearcock Plan and earn a good income while learning to show you how; begin actual work at once; all or part time; experience unnecessary; no canvassing; send for particulars. News-writers Training Bureau, Buffalo, N. Y.

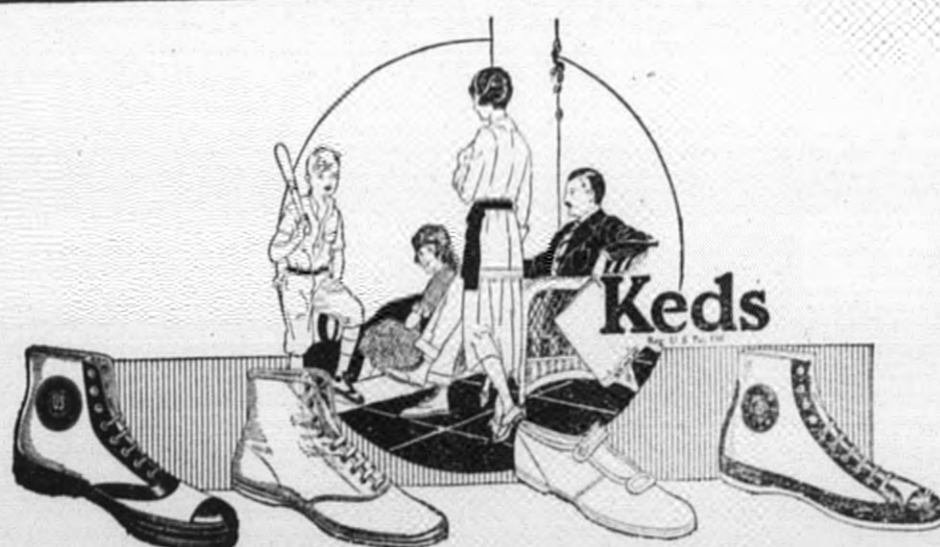
GET YOUR

Maroon & Cream

PICTURES TAKEN AT

W. E. BAKER'S

The College Photographer



KEDS of all kinds

Ideal Shoes for the Weather That's Ahead.

THE COLLEGE SUPPLY STORE

Maroon and Cream Front

QUALITY SERVICE
BRAD'S BARBER SHOP
 Next to Van's Restaurant

EARL C. CLAPP Winchester Hardware
 EVERYTHING IN SPORTING GOODS

\$5.00 Meal Ticket
 \$4.00 Lunches at All Hours
Van's Regular Meals 20 Cents
 C. L. VAN NORTWICK, Proprietor

Buy Your Note Book Paper by the pound at
THE ALMA RECORD

Announcing
 The installation of one of the most modern iceless fountains we could secure, and the refinishing of our fountain room.
 As refined and as secluded a spot as you will find.
Look-Paterson Drug Co.
The Rexall Store

For **Quality Dry Cleaning**
 Pressing and Repairing
 CALL
ALMA CITY DRY CLEANERS
 JAS. ROSE, College Agt.

THE CITY NEWS STAND
 A. DIETZ, Proprietor
 Complete stock of Current Magazines and Periodicals
 DAILY PAPERS BOOKS
 We can get any book for you in a very short time.
 Agent for the Wolverine Portable Phonograph and Vocalion Red Records.

Model Bakery Goods
 Give Model Bakery
THE MODEL BAKERY
 246 E. Superior St.

De Luxe Candy Co.
 We are now serving an
Excellent Dinner
 for **30^c**
 We make an especially delicious Chop Suey, too.
 Then we have sandwiches and lunches, that we serve at all hours.
 And of course our home made candies are still of the same high quality.
DELUXE
 PHONE 89 325 STATE STREET

THE COURT SEASON
 (Continued from page one)
 ever inflicted on a Kalamazoo College basket ball team, falling 45 to 24. Michigan State Normal caught Alma on an off-night when little real basket ball was shown. But the home game was pulled out of the fire in the last 10 seconds of play when a foul shot by Catherman for the winning point of a 26 to 25 game. Olivet was able to hold Alma to a 36 to 21 score here. Down at Kalamazoo the Orange and Black fell again to Campbell's fighters, this time 28 to 21. Olivet on the second day of the trip played Alma 18 to 22. Albion at Albion gave Alma a real fight during the first half, but scoring only a single point in the final half against Alma's well known defense, was forced to take a 28 to 11 beating.

The season was replete with remarkable basket ball, with the team showing to fine advantage in nearly all games played, and every man on the squad substitutes and all must be remembered that it takes second stringers to develop a powerful first team on both defense and offense. There are eight letter men on the squad this year, Captain Carty, "Cuddy" Shaver, "Wolfe" MacDonaid, "Dutch" Welthoelder, Wright, Rus. Catherman, Van Hee and H. Catherman. Not a man graduates and Alma is hoping to see every man back next year making another great fight for a championship.

BAND DANCE
 (Continued from page one)
 and Cream streamers, and there the uniformed musicians presented the following program:
 1. (a) "Royal Emblem" Overture—King
 (b) "Roses and Orchids" Waltz—Jewel
 (c) "Varsity" One Step—Moore Band
 2. (a) "Premire Polka"—Llewellyn
 (b) "My Regards" Waltz—Llewellyn
 Mr. D. H. Nickerson
 3. (a) "Royal Hussars" March—King
 (b) "Roses of Memory" Waltz—Jewel Band
 4. Clarinet Solo, Selected K. Wolfe
 5. (a) "Victors" March—Elbel
 (b) "Young Love" Mazurka—Jewel
 (c) "Home Stretch" Galop—King Band

The musicians were greeted with an appreciation which lasted throughout. The cornet solos by Mr. Nickerson, and the clarinet solo by "Ken" Wolfe were the features of the evening. Erwin Merriam ably rendered the accompaniment for these numbers. The band reached the height of its enthusiasm when it broke forth the strains of "The Victors" by Elbel, and the prolonged applause pronounced this selection one of the most popular of the concert.

Following the program, dancing was again enjoyed, and George (Sheik) Couture, campus "ale taster" took charge of the refreshments. Professor Ewer is to be congratulated for his fine work in organizing and presenting his collegiate musicians. He has taken the midnight soloists of Pioneer Hall, and the first entertainers from other parts of the campus, and organized them into a group which acclaims state appreciation. The members are also to be congratulated individually, for "a chain is as strong as its weakest link." Without doubt, the next public performance of the Alma College Band will be at Grand Rapids, when the Maroon and Cream base ball team will play Wooster College before the Presbyterian General Assembly.

PHILOMATHEAN
 The Philomathean Literary Society was called to order by the President Monday night. Roll call was responded to by an interesting fact concerning the Central States. Dorothy Douda read a paper on, "Points of Interest in the Central States." Following this, Godard's "Venetian Barcarole" was excellently played by Helen McDougal. An impromptu debate followed, "Resolved, that it is better to travel through the Central States on a bicycle than on a Donkey." Ethelyn Adams, Mary Hagaman, and Emma Ardis composed the affirmative team while their worthy opponents were Clarissa Vreeland, Esther Oldt, and Alma Gilbert. Very striking arguments were presented by both sides. The judges rendered a two to one decision in favor of the negative.

A. B. Scattergood
 Caters to the College Trade

CRANDELL-SCOTT CO.
 Furniture, Rugs, Pictures and Framing

HOME BAKED GOODS
ROGER'S GROCERY
 Phone 173 123 W. Superior St.

SURPRISE— the folks at home with a nice new **SPRING HAIRCUT**
DAVIS BARBER SHOP
 South of Eichenberg's Grocery 324 S. Woodworth

Spring Merchandise is coming in.
Economy SHOE STORE
 ALMA, MICHIGAN

Electrical Merchandise of Highest Quality
Alma Electric & Battery Co.
 East of City Hall

By Far the Best for the Price—
 30c Choice Dinner every week day
 50c Chicken Dinner on Sunday
 American Lawn, Blue, and
 Chicken Chilled Soups
The Paris Cafe
 Music every night from 7:30 to 11:30
 On Sundays 9 to 10:30

SHREEVE & BUCCANNING
 The New True Blue Oakland
 Complete Line of Auto Supplies and Accessories
 Next to Strand Theater ALMA, MICH.

WHITMAN'S CHOCOLATES
PARKER DUOFOLD PENS
Winslow Bros. Drug Store
 OPPOSITE CITY HALL

Idlehour Theater
 TUESDAY (Last Day)
LENORE ULRIC
 —in—
"LIGER ROSE"
 WED., THURS., & FRI.
GEORGE ARLISS
 in the stage role that he made famous
 "The Rajah of Rukh"
 THURSDAY
 In Addition to
"The Green Goddess"
 PERSONAL APPEARANCE
 Miss Jerrie Dean
 Mary Pickford's Screen Double
"The Green Goddess"
 We've booked "THE WINNER" for the day you come back