

The Weekly Almanian

VOL. VII, NO. 8

TUESDAY, NOVEMBER 18, 1913

PER COPY 5 CENTS

YPSILANTI DOWNED

Alma Defeats Normal School by Score of 34-0

WORK OF MAROON

Men is Sensational—Curtis and McRey Starred for Teachers

At nine-five a. m. referee Watkins whistled for Ypsilanti and Alma to struggle for the minor college title. It was a struggle indeed, a struggle for "Ypsi" to keep Alma from making a point a minute. Bleamaster's men played a whirlwind brand of football and plainly showed that speed had the better of weight. Only once during the game the ball was as close to the Alma goal as the 15-yard line. And only once during the contest was Alma held for downs. This was due to the fact that Alma was penalized fifteen yards twice in succession. The blocking and interference was the real stuff and made it easy for the men to gain. But two men on the Normal eleven, Curtis and McKey, seemed able to gain consistently, while the Maroon men, backs and linemen alike, gained at will.

The summary:

Captain Wood won the toss and chose to receive. Pearl kicked to Phillips who ran it back eight yards. "Pug" plunged through the line for five yards. The ball was fumbled on the next play and Spinney recovered it. Alma was penalized five yards for offside playing. "Pug" punted forty yards to Curtis. "Ole" broke off the first play. Alma was again penalized for being offside. "Ole" didn't like that, so he broke up another play. "Doc" got Crouse for no gain. Crouse punted out of bounds on Alma's 40-yard line. Harry skirted the end for ten yards. The ball was carried up to "Ypsi's" 5-yard line on successive plunges and the ball went to the Normals. Crouse attempting to punt out of danger fumbled the ball and "Dusty" nailed him for a safety making Alma's first points. From the 20-yard line Curtis got two off tackle. "Dusty" stopped McRey at the line. Pearl slipped through for six. Crouse punted to Schultz who returned five yards. Two end runs by Austin and Schultz and a forward pass, Vogt to Spinney, carried the ball 44 yards and scored the first touchdown for Alma. No goal. Score, Alma 8, Ypsi. 0.

Pearl kicked to "Eph," who ran back several yards. "Pug" tore through center for 20 yards. Alma received a penalty of fifteen yards for holding. "Pug" got ten off end. Time out for Kishigo. An Indian cannot be hurt very easy but this fellow got his. The forward pass failed and "Pug" punted to Crouse. Schultz intercepted a forward pass. Alma's ball on Ypsi's 35-yard line. The next play was sensational. "Pug" was going through the line and fumbled, Vogt recovered and slipped through for about a yard and fumbled, Hyde, Jr., then picked it up and crawled two yards more. The first quarter ended. Alma's ball on Ypsi's

(Continued on page 2.)

ADRIAN. SOBS.

The following is taken from the Adrian College World, after Adrian endeavored to play football on Davis Field:

ADRIAN LOSES TO THE PRESBYTERIANS BY LARGE SCORE.

Long Trip, Heavier Bunch, Unfair Decisions and Injuries Put Local Team at a Disadvantage.

A combination of rather indifferent officiating on the part of referee Jenkins, who is said in the press dispatches to be from Northwestern University, but who went through the formula of his official duties like a native of northwestern Guanabacoa, and a lot of "rough stuff" by Alma players proved too much for the college team last Saturday and they went down to defeat before the upstarters by the biggest score on record this year in the M. I. A. A., 66 to 0.

Three downs were as high as his honor, Mr. Jenkins, could count when the ball was in Adrian's possession, and time after time the ball was given to the Presbyterians after Adrian had failed to make her necessary ten yards in three trials. A little old-time football, of the type that we played on San Juan hill before the war, was introduced by the Alma team, who delighted in seeing how far they could stick their feet in an Adrian man's mouth.

Leaving out the "It might have been" stuff, Adrian was probably outplayed, and with the breaks of the game going to Alma, a loss was all that could be looked for.

It is not just certain which war Adrian refers to but think it must have been when Adrian met her slaughter and fell from the M. I. A. A. She has not been back in the M. I. A. A. long enough to know how to play real college football, but certainly she got a few pointers from Coach Bleamaster's husky bunch. She seems to think it Alma's aim to stick their feet in her men's mouths, but this was not difficult to do because seemingly each Adrian man stood with his mouth open wondering what to do next. We hope Adrian will soon forget her sobbing and get into the game and when they are fairly beaten learn not to lay it up against the officials.

ALL ABOARD FOR OLIVET.

Saturday morning the big train leaves for Olivet. Will you be there with colors flying? If you are not present when the train starts you will lose ten good honor points. Students, this will be the chance of your life to see the country owing to the peculiar location of Olivet. The team wants your support and you do not want to miss this general good time, so get busy and go. The faculty and townspeople are greatly urged to go too. There will be lots of room for you all. The train will leave Alma at 7 a. m.

ALMA CLUB.

On Friday evening, Nov. 7, a number of old Alma students who are in the Michigan University, met in McMillan hall and organized an Alma College club. These people, about twenty in number, intend to get together at least once a month for a general good time. They also propose to entertain any Alma student or faculty member who happens to be stopping in the city, providing they are willing to bring to this group some news from Alma. If anyone who is going there will let the president of the organization know it, he will see that you are well entertained. This is a good thing on their part and certainly shows that their remembrances of Alma are not lost in the big university. The officers are as follows, viz: President—Whittemore. Vice-President—Lela Duff. Secretary—Satterlee. Almanian Reporter—Rushmore.

ALPHA THETAS ENTERTAIN.

The Alpha Theta Society entertained the other girls in the gymnasium Saturday night. The dance was in the form of a Pink Party, pink being the prevailing color in decorations, dress, etc. Pink and grey programs were used, these forming a part of the color scheme and making use as well of the Alpha Theta colors. Pink punch, ice cream and wafers served as refreshments and pink carnations were given as favors. Co-eds and teachers alike spent a very enjoyable evening and the friendly relationship between the sister societies which has always existed, was only made manifest through the evening's entertainment.

EUTERPE ENTERTAINED.

Tuesday evening following the musical recital given by the Misses Velma and Mary Sharp, Miss Anna Montigel, president of the Euterpe society, entertained the members of the society, also the Misses Sharp, and Messenger, Prof. and Mrs. Veatch, Mr. Fannell and Prof. Glen S. Crisp. The evening proved to be a most enjoyable one. Miss Montigel had planned a musical program given by several of the Company. Which was indeed entertaining. Later in the evening light refreshments were served. Those present declare Miss Montigel a royal hostess.

FIFTY WINKS.

A big local talent musical comedy will be given under the direction of Cowan & Walker at the Realty opera house, Thursday and Friday evenings, Nov. 20 and 21. The College male quartette are to render several selections. This promises to be an excellent entertainment. The proceeds are to go to the city military band. Turn out and lend your support.

ARTISTS' CONCERT

Given in Realty Opera House Tuesday Eve. by the Misses Velma and Mary Sharp

LARGE AUDIENCE

Greeted Them—Alma is Very Proud to Claim These Two Great Artists

Under the auspices of the Euterpe society, one of the best musical recitals ever rendered in Alma was given in the Realty opera house last Tuesday evening, by the Misses Velma and Mary Sharp of this city. Alma is very glad to claim two such talented young ladies as these are. A large and enthusiastic audience greeted them. The great applause each number received spoke only in part of their favor with the audience.

Miss Velma Sharp is a natural pianist and has a splendid stage appearance which at once attracted her audience. She began her musical study in Alma college; after receiving her diploma from this institution, she next spent four years in the Michigan Conservatory of Music in Detroit. Here she studied three years under Alberto Jonas and one year under Victor Benham. Upon graduating here Miss Sharp decided to study abroad. She took up her work in Vienna under Leschetizky. Generally students have to spend the greater part of the first year under some special trainer before going directly to Leschetizky for lessons, but Miss Sharp proved to be an extraordinary pupil and at the end of two months was taking lessons directly of this famous man. Miss Sharp spent three consecutive years here, then she was called home, but returned for another year. During the three years she had as her coach Madam Bree, who was the greatest assistant and who also was the coach of Paderewski and other famous musicians. Miss Sharp seemingly gained great recognition in Leschetizky by her excellent ability at the piano. Last year, when she was again in Vienna she was entertained by him.

Miss Mary Sharp received the most of her musical education at Vienna. She spent five consecutive years in Vienna under the training of Grampietro. She proved to be a very efficient pupil and did six years' work in the five years she was abroad. She was considered one of the best of the younger artists.

The program of the evening was as follows:

- 1 Sonata, op. 31, No. 2....Beethoven
Largo allegro, Adagio, Allegretto.
- 2 Aria—"Ah! fors e lui" (from La Traviata)Verdi
- 3 (a) Fantasie—Impromptu, op. 66Chopin
(b) Third Ballade, op. 47...Chopin
- 4 (a) Boat Song.....Harriet Ware
(b) SerenadeBrahms
(c) Spring Night.....Jenson
(d) In a Balcony Wolf
- 5 (a) Arabesques Debussy
No. 1. No. 2.
(b) Witches' Dance ...MacDowell
- 6 Aria—"One Fine Day".....Puccini,
(from Madam Butterfly)
- 7 ToccataLeschetizky

(Continued on page 4.)

LOOK! LISTEN!

Froebel Stunt Party Coming Friday Eve., Nov. 21. College chapel. Everybody out.

ADMISSION - 15 CENTS

**...The...
Weekly Almanian**

PUBLISHED WEEKLY BY THE
ALMANIAN PUBLISHING CO.
ALMA, : : MICH.

ADDISON WILSON, '15 Managing Editor
ROY PHILLIPS, '14 Business Manager

SUBSCRIPTION:
COLLEGE YEAR \$1.25
SINGLE COPIES FIVE CTS.

Change of address should be accompanied by
old as well as new address.

Entered as Second Class Matter, Sept. 24, 1907
Act of 1879, Alma, Mich.

Advertising Rates on Application

CORNER ON DATES.

Union Prayer Meeting, Wednesday evening, at college chapel. Leader, C. Hyde.

Sunday, Nov. 23, 3:30 p. m.—Union meeting of Y. M. and Y. W. at Masonic Home. Leader, F. S. Johnson.
Nov. 22—Alma at Olivet.

NEWS ITEMS.

Ruth Ray, who attended Alma as an academy and art student during the years 1909-10 and 1910-11, was married on September 3rd to Mr. Jerome B. Welch, at Lafayette, Indiana. They have taken up their residence at Duncombe, Iowa.

Miss Bernice Ireland entertained her mother last week end.

Mrs. Woodruff was the guest of her daughter, Lorna, over Sunday.

The Hyde "Bruds" went to their home in Addison, Michigan, after the Ypsi game Saturday.

Coach Bleamaster was in Albion Friday to witness the Albion-Olivet game.

EAST SIDE SABBATH SCHOOL.

Through the efforts of Rev. Mason and the session of the Presbyterian church of Alma a Sabbath school has been organized on East side. Great interest has been manifested by the East Side people. At present the Sabbath School is held in a dwelling house rented for that purpose at 1221 Michigan avenue. Each Sabbath about sixty people are present. The officers are as follows:

Superintendent—Dr. Notestein.
Assistant Supt.—Rudolph Beyer.
Treasurer—Alonzo Beshgetoor.
Secretary—Miss Gladys Dersham.

The teachers are the Misses Beach, Williams, DeWitt, Markham, Ellis, Ward, Blaisdell, and King. The need of this organization has been felt for some time and much good is expected from it.

WEEK OF PRAYER.

The week of prayer for missions was observed this last week. The students took great interest in it, and much was learned about missions during the week. The meetings were led by the Misses Carl and Beach, Messrs. Esseltyn and Wilson and Prof. West.

YPSILANTI DOWNED.

(Continued from page 1.)

30-yard line.

The second session started off like a race. Harry got ten, "Pug" three, Hyde, Jr., 2, "Eph" 8. Harry wriggled loose from several Normalites and lost the ball on their 10-yard line. In three attempts the school teachers failed to gain more than one yard. Crouse punted to Wood who carried it back ten. He got four through center. Harry made first down. "Eph" made two and "Pug" did the same. Harry again made first down. "Eph" took his usual fifteen yards for

touchdown number two. No goal. Score 14-0.

"Pug" received the Normals kick again and returned for fifteen. "Eph" shot around tackle for seven yards. Harry made first down. "Dusty" made nine yards nine inches. So near ten yards that they had to measure it. Hyde, Jr., hit the line for six yards. "Eph" almost got loose for another touchdown. Lucky for Ypsi that he slipped. "Pug" went through center for six yards, had two teachers clinging to him. No goal. Alma 20, Ypsi 0.

Wood received the kickoff and ran the ball back twenty yards. Alma penalized fifteen yards for holding. Alma penalized again for having a man on the field without permission. "Pug" punted out of bounds on Alma's 40-yard line. Three passes were tried, Goodrich to Crouse, one of them netting ten yards. Morrison was sent in at Bahnmiller's guard. "Pug" sailed by Morrison for twenty yards. Time out for Crouse. A forward pass failed. The half ended with this play.

"Ole" kicked off to McKey who made a brilliant run of twenty-five yards, but fumbled the ball when Schultz nailed him. Spinney, Wood and Schultz netted six. Alma held for downs. Ypsilanti attempted a pass but Harry intercepted it and sprinted forty yards for a touchdown. Schultz goaled. A. 27, Y. 0.

"Ole" kicked to Kishigo who returned eight yards. Pearl hit the line for four. "Doc" spoiled a pass. McRey circled end on a fake for ten yards. "Doc" got Curtis for a five-yard loss. Kishigo rushed center for seven yards. Alma's ball on a fumble. "Doc" made four on an end run. "Pug" hit the line for eight. Hyde, Jr., plunged for two yards. "Pug" took a similar course for first down. Alma penalized five yards for off-side. Wood punted to Goodrich. Curtis gained fifteen.

The third period began with the ball in Ppsi's possession on their 40-yard line. Curtis made an end run for fifteen yards. Schultz intercepted a pass on Alma's 32-yard line. Alma penalized fifteen yards. Reason unknown. Wood punted over Goodrich's head. A pretty pass, Goodrich to Curtis, nets fifteen yards. The Normal enthusiasts go wild when they see Curtis' narrow escape. Three plays fail to gain for the Normals. Time out for Spinney. Ypsi penalized fifteen yards for holding. Crouse punted into the bleachers. Alma penalized ten yards. Reason unknown. "Eph" added another eight. Harry beat around right end for fourteen yards. Cole plunged the line for six yards. "Pug" took the same place for eight. Schultz and Wood made ten and "Pug" scored the final touchdown on another play. Schultz goaled. Score, Alma 34, Normals 0.

"Eph" took the last kickoff and returned eleven yards. Cole, Wood, Johnson and Schultz carried the ball successively to the center of the field where the game ended.

The line-up:

McRey L E..... C. Hyde
McKenny L T..... Austin
Bhnmlr, Morsn L G..... Cresswell
Hartman C..... Anderson
Ott R G Phillips, M'bee
Moore R T..... Johnson
Crouse(C),
Rynearson E..... Spinney
Goodrich Q..... Vogt
Curtis L H..... Schultz
Pearl R H. M. Hyde, Cole
Kishigo F B.... Wood (C)
Touchdowns—Spinney, Schultz,
Wood (2), Johnson, Safety, Austin.
Referee—Watkins, U. of M.
Umpire—Wyman, U. of M.
Headlinesman—Steimly, Hillsdale.
Time of quarters, 12½ minutes.

SEE STEVIE

STUDENTS—You are invited to make my place
your headquarters, I keep a full line of

Fine Confectionery, Ice Cream and Ice
Cream Soda, Souvenirs, Post Cards,
College Pennants, Pillows, Blankets,
etc. Hot Drinks in Season.

S. L. BENNETT, Prop.

117 E. Superior St.

Alma, Michigan

WHEN YOU WANT THE BEST IN

Photos

....CALL AT....

Baker's Studio

S. W. ANDERSON

Restaurant and Restaurant Supplies, Ice cream, Cigars,
Tobacco and Confectionery. Regular meals 25c. Hot
Lunches all hours. Table board or board and room.

OPEN DAY AND NIGHT

CHAS. G. RHODES

AGENT FOR

A. G. Spalding & Brother

and

Wright & Ditson

FIRST STATE BANK, Alma, Mich.

LOCATED IN WRIGHT HOUSE BUILDING

A good place to leave your funds

**Alma College Students Are
Welcome At**

WRIGHT & BROWN'S

PICTURES -- FRAMES -- FURNITURE



Everything You Want For That Spread

AT MEDLER'S GROCERY

Fresh Fruits, National Biscuit Company's Crack-
ers and Sweet Goods, Frou Frous.

Sealshipt Oysters in Season Both Phones

LOCATED IN I. O. O. F. TEMPLE

THE QUALITY GROCERY

GOODIES FOR LUNCHES AND SPREADS

ORANGES BANANAS GRAPES, Etc.

SMITH BROTHERS, PROPRIETORS



ANOKA
2 for 25
ANOKA A New ARROW Notch COLLAR
Cluett, Peabody & Co., Inc. Makers

E. A. LINDNER

Strictly first class Shoe Repairing
By Modern Machinery

Wright House Barber Shop
Baths in Connection
FRED ROGERS, Proprietor

Watches--Jewelry
Everything that's found in a high class Jewelry Store at
A. B. Scattergood

The Sanitary Barber Shop
Invites Your Patronage
CALVIN & RAY, Props.
First Door North of Reading Room.

Watch and Jewelry REPAIRING
PRICES REASONABLE
J. E. CONVERSE
JEWELER

G. B. PORTER
JEWELER AND OPTOMETRIST

All The Latest Creations
In Millinery goods on display at
Mrs. S. B. Cook's
STYLES AND PRICES RIGHT

Alma City Laundry
Service Most Prompt
Satisfaction Guaranteed
MILHOGAN
College Agent

An Old Song Revised by the Co-Eds.

(Tune—Tammany.)
Hefliger, Hefliger,
She's the dean of the co-eds,
Tucks them in their little beds.
Hefliger, Hefliger,
Deanie, Deanie, Deanie, Deanie,
Hefliger.
B-join, B-join,
She's the one who teaches gym,
She is tall, divinely slim,
B-join, B-join,
Blondie, Blondie, Blondie, Blondie,
B-join.
Warner, Warner,
Has such eyes so big and round!
Makes his speeches by the pound.
Warner, Warner,
Glennie, Glennie, Glennie, Glennie,
Warner.
Cornwell, Cornwell,
Teaches French the whole long day,
Parlez vous francaise?
Cornwell, Cornwell,
Baby, Baby, Baby, Baby,
Cornwell.
Blaisdell, Blaisdell,
Tells us all to Fletcherize,
And he puts the Freshmen wise.
Blaisdell, Blaisdell,
Prexie, Prexie, Prexie, Prexie,
Blaisdell.
Robinson, Robinson,
She is the boss of the K. G.'s;
Makes them mind their "Q's" and "P's,"
Robinson, Robinson,
Auntie, Auntie, Auntie, Auntie,
Robinson.
Florence Ward, Florence Ward,
In the K. G. room holds sway,
With the little youngsters play.
Florence Ward, Florence Ward,
Flossie, Flossie, Flossie, Flossie,
Florence Ward.
Other stanzas: "Gummy," "Note-stein," "A. P. Cook," etc., as in previous years.

Mr. Johnson of Yale, Michigan, entered college last week. Mr. Johnson will undoubtedly be a good addition to the base ball team in the spring. Miss Agnes Hope of St. Johns, Mich., is visiting the Misses Swigart of Alma. The Zeta Sigma banquet will be held either December 4th or 5th. President Johnson will be glad to hear from any old men who are planning on coming back for it.



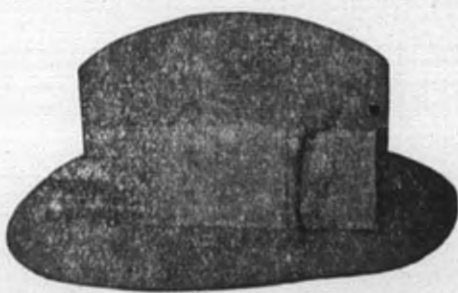
Many a Courtship
has been waged, through the various stages, to a successful finale by the aid of
Our Choice Confections
Don't Ignore Them
They are most effectual in patching up lovers quarrels, and are
Indorsed by Cupid
as one of his most efficient allies.

Luchini Bros.

FOR COLLEGE GIRLS

Beautiful Styles in Dress Boots and Party Slippers. Fine line of Bedroom Slippers at
\$1 00, \$1.50 and \$2.00

ECONOMY SHOE STORE, The College Store



You will find the Latest Styles in **HATS and CAPS** in the city at
Fred Slater's
Men's Wear Store

The Kingsbury Hat
GUY CAMPBELL ARCHIE MAYBEE

Trunks	PICTURE FRAMING	Rugs
Bags and Suit Cases		Mats and Portiers
		Crandell & Scott

Whats The Matter Freshmen?

The old students ar eating our pies and drinking our Coffee. Why not you.

GRAY & GRAY
OPPOSITE POSTOFFICE

Olives Confectionery Canned Goods

TRADE AT SMITH'S BAKERY
FOR THE BEST LINE OF BAKED GOODS

Special Orders Taken For Spreads

Alma State Savings Bank

NEW BUILDING BETTER FACILITIES
COLLEGE STUDENTS ALWAYS WELCOME

MILLER BROTHERS
ALMA'S GREATEST GROCERY

Liggett's Choclates and Fine Stationery
AT
GROVER'S DRUG STORE
THE REXALL STORE

ALMANIAC

Miss Funnell—"I used to live here in Alma and I never liked the place."
 Miss Parker—"Perhaps you might like it better now since they have pavements and new electric lights."
 Miss Funnell—"Not me. I'd rather have it dark any time."

Old Hand at It.
 "Eph" Johnson (at the Virginia Romance when Mr. Fannell was supposed to be making love to Miss Sharp)—"Gee! I wish I was a tenor singer; I'd like to show Fannell how to do that."

Loses Grit.
 Miss Mar kham—"Say, Miss Ireland, hasn't Mr. Searl asked you to go to the banquet yet?"
 Miss Ireland—"No; he has not. Do you know, he reminds me of an hour-glass."
 Miss M.—"How's that?"
 Miss Ireland—"The more time he has, the less sand he has."

In Line For It.
 Gold Dust Twins—"Say, fellow, who must we see at the college to buy the old papers of?"
 "Tar"—"Better see A. P. Cook."
 G. D. T.—"Who's he, the fireman?"

Found, the following note. owner may have same by paying for the ad.

"Dear Grant—
 "I must see you. Meet me in the chapel at ten—if not at ten, then one-fifteen or two-fifteen—I have a class at three-fifteen but will skip that to meet you if you can't come until then. I must see you.
 Hastily,
 "L—."

ARTISTS' CONCERT.
 (Continued from page 1.)
 Miss Velma Sharp is a musician in the broadest sense. The intelligence, maturity and seriousness of her work places her among the best of the younger artists. Most admirable of all was her exquisite performance of the lovely sonata of Beethoven, clearly concise and displaying great taste in dynamic shading and beautiful tone.

A group of Chopin numbers proved Miss Sharp's versatility. Her technique and phrasing far surpassed mere proficiency. The Arabesques No. 1 and No. 2 are characteristic of the modern French school. They are delightful pieces and the interpretation was of the highest order. The Witches' Dance, by MacDowell, and Toccata, by Leschetizky, were brilliantly played with amazing distinctness and lightness of finger and prodigious strength when needful.

Miss Mary Sharp possesses a remarkable coloratura voice of wide range. Her singing is natural and artistic and her manner pleasing.

The aria from La Traviata gives ample opportunity to test the most mature artist and in this Miss Sharp seemed apparently at ease. Her voice is distinctly rich, fresh and flexible.

The group of songs was well selected and beautifully sung. Miss Sharp was happy in the aria from Madam Butterfly. Her enunciation was especially good. So artistic was her interpretation that we were carried into the last act of the opera.

Miss Sadie Messenger gave splendid support in the accompaniments.

Many have expressed the desire of hearing the Misses Sharp again in the near future.

NEW BOOKS IN THE LIBRARY
 (Continued from Last Week.)
 Faguet—Rousseau Penseur.
 Barres—La Colline Inspiree.
 Lamertine—Graziella.
 Robinet—Dictionnaire de la Revolution et de l'Empire.
 Le Sage—Gil Blas.
 Perry—School Administration.
 Scripture—Stuttering and Lispering.
 Washburn—Animal Mind.
 Rand—Modern Classical Philosophers.
 Pearson—Grammar of Science.
 Fiske—Meaning of Infancy.
 Holmes—Conservation of the Child.
 Parkin—Rhodes Scholarships.
 Parker—History of Modern Elementary Education.
 Perry—Approach to Philosophy.
 Russell—Problems of Philosophy.
 Seashore—Experiments in Psychology.
 Dessoir—History of Psychology.
 Dopp—Tree-Dwellers.
 Dopp—Later Cave-Dwellers.
 Witmar—Psychology.
 Titchener—Psychology.

Eph. Johnson, Roy Phillips, Oscar "Vibber" Anderson and Tar Robinson attended the Michigan "Pensy" game Saturday afternoon.

The Misses Edna Ward and Norma Wright went to Ann Arbor Saturday to attend the football game.

Carr Athletic Supplies

Are standard and carry an absolute guarantee. Write for catalogue.

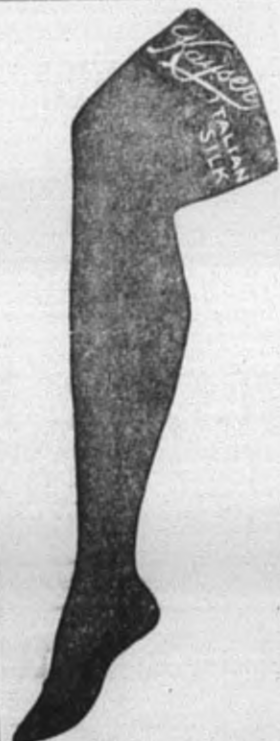
Chas. C. Carr Co.
 Indianapolis, Ind.

Dr. Cyrus B. Gardner
 Pollasky Block

OFFICE HOURS 1:30 to 5:00 p. m.

Dr. F. C. THORNBURGH
 HOMEOPATH

General Practice Both Phones
 309 State St. ALMA, MICH.



JUST RECEIVED

A new line of Kayser's Italian Silk Hosiery, Black or White.

1.50 pr.

D. W. ROBINSON
 TWO STORES

All Staple and Fancy Groceries

—AT—

M'INTOSH'S
 ACROSS FROM CITY HALL

Lunches Shortorders Regular Dinners

THE HUB

Students Buy Meal Tickets and Save Money

—MR. AND MRS. A. B. GAIS—

ELLISON

OFFERS THIS WEEK

Olive Chow, per jar...10c } Tuna Fish, per tin...15c
 Olive Salad, per jar...15c } Almond Stuffed Olives...35c

Ellison's Grocery

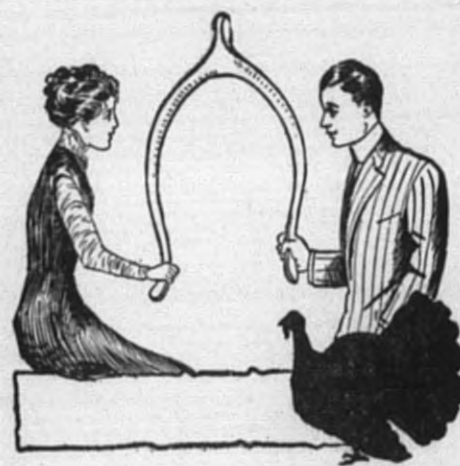
MITCHELL'S DRUG STORE

Drugs, Stationery, Cigars

A New Line of Morse's Fine Box Chocolates

Come and See us at our New Location
 One Door South

The College Barber Shop MINER & BUTTON, State St.



FOR WHAT DO YOU WISH?

It is wish-bone time and people are apt to have their special longings. Almost everybody hopes to spend their money to advantage—to get the best values possible for their hard-earned cash, and here is where they get the opportunity. We give you honest values, perfect service, and satisfaction with every purchase. One trial convinces.

Alma Dry Cleaner
 121 W. Superior St.



Ralston

"Crescos"

The Ideal Shoe for Winter

G. J. MAIER & CO.

OPEN FOR BUSINESS

Home Made Candy—Fresh Every Day

E. A. Smith
 Two Doors West of Scattergoods