

OCT 10 1923

Cap 1

THE ALMANIAN

THE STUDENT PUBLICATION OF ALMA COLLEGE

VOLUME SEVENTEEN

ALMA, MICHIGAN, TUESDAY, OCTOBER 9, 1923

NUMBER THREE

NIGHT SHIRT KLAN PARADE STREETS

Annual Y. M. C. A. Stag Banquet Given Wednesday Night.

Rushing the town, a klan of white robed rah-rah boys startled onlookers in their annual pajama parade last Wednesday evening.

The Y. M. C. A. had charge of the parade and at 7 o'clock the college men appeared at the college gym, where veiled in their gaily hued pajamas they enjoyed the horse play known as hot hand, until the night grew on.

The parade created a tremendous enthusiasm among the fellows as they thundered the "A-L-M-A-A-L-M-A" through the business district of the town. The entire night was featured by the aptness of the yell leader, "Bob" Wyatt, who made it possible for the mob to yell for sustenance from the starvation effects of the snake dance. He also sought out the notorious freshmen and created arts for them to adhere to.

The blushing frosh were led by their wiser upperclassmen to the European Cafe, the De Luxe Ice Cream Parlor, the Paris Cafe and the two theaters. These enterprises of the town are to be praised for their good sportsmanship and their filling feeds and entertainments.

The plebs found that it was up to them to entertain their rougher brothers. They also found that pleasing upperclassmen called for real talent which few of them possessed. At the European Cafe, Powers tried to resurrect "Barney Google" but nobody knew he was singing so they called on the mighty "Freddy" Sabbage for an account of how he knocked out Dempsey and a demonstration of how he did it. Those who had ring side seats said that he was a marvel. The two large
(Continued no page four)

Hood Museum to Be Open to the Public

Plans are now being made to extend the use of the Hood Museum. This move on the part of the college authorities is made with the feeling that a considerable benefit may be obtained by the people of this part of the state, by having the museum open to the public at stated times, as well as for students and faculty members. Heretofore, it has been only at intervals that the museum was opened even for campus inspection. With these added privileges, all students are urged to give special attention to the museum, as the collections contain many pieces that are of interest to all, whether they are interested in sciences or not.

For the present at least it is planned to have the museum open from 1:30 until 4:30 on Friday afternoons, for the use of the public. If this time is not suitable for various organizations which may desire to benefit from it, some other time may be arranged by communicating with the college office.

It is probably not known to the general public as well as to a great many of the student body that the collections in the Hood Museum are the best in the state outside of the University of Michigan Museum. This opening comes as a real privilege as the majority of people are interested in some particular field, and it is probable that the museum will contain something in this particular field that will be of real interest.

There are undoubtedly many people who have some individual specimens of museum value, which may be lost if not put in some place for safe keeping, and a museum is the proper place. There it may depict some chapter in history, or perhaps round out some particular phase, making the specimen of real value when placed with others, while alone it may have but little value. The College would be very glad to receive such specimens, and make their service to the public as extensive as possible.

WHO'S WHO AT ALMA

SENIOR CLASS

President, Hugh Tarrant, Harbor Beach
Vice-President, Norma Messecar, Crosswell
Secretary, Ruth Bradley, Alma
Treasurer, S. A. Shoemaker, Almont

JUNIOR CLASS

President, F. W. Shaver, Bay City
Vice-President, Virginia Tremaine, Cheboygan
Secretary, Zada Doerr, Traverse City
Treasurer, Erwin Merriam, Flint

SOPHOMORE CLASS

President, Edward Lemen, Detroit
Secretary, Winifred Porter, Flint
Vice-President, Eunice Houghton, Mt. Clemens
Treasurer, Winifred Porter, Flint

FRESHMAN CLASS

President, Reed Ruggles, Alma
Vice-President, Dorothea Young, Alma
Secretary, John Anderson, Tecumseh
Treasurer, John Anderson, Tecumseh

ZETA SIGMA SOCIETY

President, Hugh Tarrant, Harbor Beach
Vice-President, S. A. Shoemaker, Almont
Secretary, Wm. Woodhouse, Ionia
Treasurer, Carleton Neeland, Mancelona
House Manager, F. W. Shaver, Bay City

PHI PHI ALPHA

President, Roy Gustafson, St. Ignace
Vice-President, Ross Calkins, Sebawaing
Secretary, Roger Cole, Allegan
Treasurer, Elno McGlone, Flint
House Manager, Richard Boyd, Traverse City

BETA TAU EPSILON SOCIETY

President—John Apsey, Peck
Vice-President, Wilmer Patton, Sault Ste. Marie
Secretary, Harry Seagar, Brighton
Treasurer, Albert Armstrong

ALPHA THETA SOCIETY

President, Norma Messecar, Crosswell
Vice President, Virginia Tremaine, Cheboygan
Secretary, Elizabeth Williams, Alma
Treasurer, Florence Leighton, Newberry

PHILOMATHEAN SOCIETY

President, Margaret Poole, Pontiac
Vice-President, Ruth King, Saginaw
Secretary, Louise Barstow, St. Louis
Treasurer, Christine Decker, Crosswell

KAPPA IOTA SOCIETY

President, Margaret Morrison, Williamsburg
Vice-President, Greta Muir, Bay City
Secretary, Mary Gerow, Cheboygan
Treasurer, Mary Campbell, Detroit

Y. M. C. A.

President, Hugh Tarrant, Harbor Beach
Vice-President, John Apsey, Peck
Secretary, Wilmer Patton, Sault Ste. Marie
Treasurer, John Shroyer, Flint

Y. W. C. A.

President, Dorothy Flannegin, Dertoit
Vice-President, Margaret Poole, Pontiac
Secretary, Katherine Jenkins, Royal Oak
Treasurer, Bernice Evans, Gaylord

WRIGHT HALL SENATE

President, Helen Scott, Redford
Vice-President, Dorothy Flannegin, Detroit
Secretary, Christine Decker, Crosswell
Treasurer, Christine Decker, Crosswell

STUDENT COUNCIL

President, Richard Boyd, '24
Vice-President, Virginia Tremaine, '25
Secretary, LoReta Neely, '26
Treasurer, Elno McGlone, '25
Marshall, F. W. Shaver, '25

Representatives

Professor Hamilton, Faculty
C. Lowell Hudson, '24
Hugh Tarrant, '24
Pauline Strick, '24
Edward Lemen, '26
Reed Ruggles, '27

Frosh Girls Given Party by Kappa Iota

Invitations in the form of tennis racquets, dumb-bells, base-balls, foot-balls, and Indian Clubs announced the track meet with which Kappa Iota entertained the new girls on Friday evening. When at seven-thirty, the new girls dressed in gym suits descended; behold, the reception room was converted into an athletic field, marked off for eight colleges and decorated with pennants.

As each girl entered the field, she was given a slip of paper with the name of a college on it. Pennsylvania, Michigan, Yale, Harvard, Cornell, Princeton, Minnesota, and Illinois. Very soon Princeton gave a cheer emphatically answered by Pennsylvania. Each college gave vent to repeated cheers which resounded through the reception room.

Very soon the official in charge, Mary Gerow, appeared upon the field and in a most decisive and 'peppy' manner, presented the rules which were to govern the contestants. The obstacle race consisting of carrying a suit-case in a short race donning the clothes inside, returning to the starting point and replacing the clothes, was won by Mary Hagaman, thus making twenty-five points for Illinois. "Peg" Poole won the tug-of-war for Cornell, by chewing the string and reaching the marshmallow first.

The discus throw, in which the contestants threw blown-up paper sacks, was taken by Etheiyn Adams of Yale. In the standing broad, Mar-
(Continued on page two)

GLEE CLUBS GET AN EARLY START

Personnel of Musical Organization Chosen. Clubs Well Balanced.

To insure an early start, Professor Ewer has already begun work with the Glee Clubs. Applicants for both the men's and women's organizations were received at Professor Ewer's studio last week and the names of the successful candidates were posted last Monday. The first meeting of the two clubs was held Tuesday evening. Practices will be held the same as last year, each Tuesday evening, with the women meeting from seven until eight o'clock and the men from eight until nine o'clock.

The men's Glee Club organized and elected officers for the coming year. C. Lowell Hudson, a member of three years standing, was selected as president. Elliot Crooks was made business manager. A freshman, Myron Hughes of Royal Oak was chosen property manager and another first year man, Stanley Fraser of Harbor Beach was elected to the office of librarian.

The women's Glee Club also organized Tuesday night and elected their officers. Miss Virginia Tremaine was chosen as president; Miss Winifred Porter as secretary.
(Continued on page three)

Phi Phi Alpha Gives Smoker in New Home

The Phi Phi Alpha House was the scene of festivities of a very lively sort Thursday evening when the society entertained at a smoker for its friends among the new men on the campus. The visitors were conducted on an inspection tour of the house, and then gathered before the fireplace for a general good time.

Gustafson and "Zev Confrey" Hantel kept the piano busy; Calkins managed the fiddle, while a whole staff of saxophone experts tried their skill. Several couples tried dancing, but the honors in that field went easily to MacDougall. As an entertainer, however, Mac was totally eclipsed by the demonstration put on by "Big Bill" Fulcher, Lewis greatly assisting him.

Frequent recourse was made to the kitchen, where Coash played bartender and doled out cider, doughnuts and pretzels. He executed the part with great understanding.

When the last pretzel had disappeared and the last "Happy Thought" was painfully penned, the party broke up in the best of spirits.

GAMES THIS WEEK

Games in which M. I. A. A. teams engage this week follow.
Thursday—Alma College and Western State Normal at Kalamazoo.
Saturday—Mt. Pleasant Normal at Albion.
Hillsdale at Ypsilanti Normal.
Kalamazoo College at Olivet.

F. I. SWAMPED BY 76-0 SCORE

College Scores at Will in First Home Game of the Season.

The marathon race on Davis field was of more or less interest to the many Alma fans who were on the side lines and the chief interest was in the guesses as to the number of men that Campbell would inject into the fray and how high the score would mount. If we did not loose count while sharpening up the pencils, which were kept unusually busy 36 men in all aided in running up a count of 76 to 0 on Ferris for the Maroon and Cream, exceeding by three points the margin by which the University of Detroit trounced Kalamazoo college.

The first team didn't start, nor did it finish. The first two teams were mixed up as a 'deck' might be after being shuffled, but each romped up and down Davis field at a merry clip and the third string even managed to make things interesting. Towards the end of the game substitutions were made at such a rapid rate that it was difficult to keep track of them and some names may not appear in the summary. But the men were in there.

Ferris was able to do little against the three Alma teams, earning one first down and getting two first downs by reason of offside penalties on the Alma elevens. Once, however, Ferris got near enough to the Alma goal so that Desrochers assayed a dropkick from the 40 yard line, and the rude, uncouth, ungentlemanly, Harley Catherman, picked the leather out of the air on his five yard line and behind superb interference trot-
(Continued on page two)

Yell-master Wyatt Calls "Pep" Meeting

The first 'pep' meeting of the year was sponsored by the new yell-master "Bob" Wyatt in the chapel, Friday evening. Wyatt's ability as a yell-leader goes unquestioned following his first appearance in that capacity.

The meeting was important in that is served to teach the frosh the Alma spirit and how to carry on at games, and secondly in that it instilled enthusiasm into the student body before the Ferris game, Saturday, which was the first home game of the season.

Wyatt used the word 'enthusiasm' as his text and all speeches were appropriately based on this 'pep' raiser. Speeches were given by Mr. "Ham" Dunham, Captain Wright, Miss Greta Muir, "Bud" Campbell, Prof. Shar-rar and "Red" Carty.

After completing several yells and singing the college songs, the freshmen then showed their enthusiasm by producing an ear-splitting 'locomotive' yell, being led by Cleon Dey.

Frosh Dancing Party Opens Social Season

The first dancing of the year was given Saturday evening in the gymnasium by the Freshman class.

The gym was attractively decorated in green, long streamers being dropped from the central row of lights. Two palms were placed on the dance floor with a cluster of chairs around each.

The music was fine. Bill Gallagher was missing, but "Ken" Wolfe was there again and brought some other musicians with him who were able to play all the variations and effects necessary to good dance music. During a short intermission the members of the freshman class served punch to all who had danced strenuously enough to become thirsty, and then the dance proceeded.

The dancing season has been ushered in, and surely if all the parties to follow are as enjoyable as the first, there are more good times ahead. The Freshmen are to be congratulated on their success.

THE ALMANIAN

The Student Publication of Alma College

Published by the
ALMANIAN PUBLISHING CO.
ALMA, MICH.

ALMANIAN STAFF

Editor S. A. SHOEMAKER
Associate Editor ROGER COLE
Associate Editor WM. WOODHOUSE
Associate Editor WILMER PATTON
Business Manager E. A. CROOKS
Ass't Bus. Mgr. CARLTON NEELAND
Athletic Editor HOMER DUNHAM
Campus Editor J. G. COUTURE
Wright Hall KATHERINE JENKINS
Circulation Mgr. RUTH ALLEN

Entered as second class matter, Sept. 24, 1907.
Act of 1879, Alma, Mich.

PREXY SAYS

"COME HOME"

To Old Students Everywhere:
Home Coming Day, November 17 will be unusual this year.

Many will be here.
The Kalamazoo game will be an important game.

Coach Campbell has accomplished wonders in Alma.

An alumni get-together is being planned.

Society banquets are provided. You haven't seen the latest:

The Phi Phi Alpha House.

Some of you haven't seen:

The Zeta Sigma House, nor

The New Gym, nor

The New Chemistry Building, nor

The Clizbe House, now a music building, nor

The New Heating Plant, with an unlettered smoke stack.

It's time to come home again.

We'll try to make it a great day for you.

Writing for all of us, this is an invitation from

Alma College

by and from The President.

A CONTRIBUTION

Dancing is the favorite social amusement of the Alma College student body. The large attendance at college dances proves this to be a fact.

For mixed parties, nothing seems to be a successful substitute for the fox-trot, two-step and waltz. Most of the fellows and girls are good dancers; and, with a good orchestra and a smooth, level floor furnished, they will remember every college dance with pleasure.

There are many really good musicians, and at least one good orchestra in the college capable of playing excellent dance music.

But—nowhere on the Alma College campus is there a real dance floor. The floor of the reception room in Wright Hall is the most adapted to dancing but it can only be used by about six couples at one time.

The auditorium of the new gymnasium, because of its size, would be an excellent place for the larger dancing parties if the floor was leveled and sand-papered. Those who attended the Frosh dance Saturday evening will remember that it was not exactly waxed.

The expense of refinishing the floor need not be so great, but if once done, it should be well done. Students may even be willing to assist the administration in paying the necessary improvement.

However acquired, the faculty, officers of the administration and the students must agree that a good dancing floor would be an asset to the college's social life.

F. I. SWAMPED BY 76-0 SCORE

(Continued from page one)

ted, paced and raced 95 yards to the Ferris goal. On another occasion this same Village Cutup received a Ferris punt and chased down the field 65 yards for a counter. Harley made one other touchdown and did that in a highly approved method, smashing the Ferris line and going almost through center for 16 yards for the counter. R. Catherman, who was also in the fray, attempted to duplicate the feats of his brother and once took a punt 40 yards for a touchdown and another time returned one 21 yards.

Four touchdowns came to the Maroon and Cream by the aerial route. Two came in the first quarter. Elias passed 15 yards to Shaver and "Cuddy" ran the final ten yards to the goal. And then a few minutes later Carty, his red beacon flaming like the one that Diogenes of old carried, picked a ten yard heave from Elias and went 20 yards to the goal. Harley took the next touchdown on his smash through the line and following the next kickoff Alma recovered a Ferris fumble, and after Alma fumbled on three successive plays, Elias skirted the end for 10 yards and a counter. The quarter ended Alma leading 25 to 0.

Alma's first touchdown in the second quarter came when R. Catherman received a punt and hit a 40 knot pace to the goal, after reversing the field. McDonald got the next

Alma kicked to Ferris and Wyant recovered a fumble for Alma on the F. I. 20 stripe. On the third play the all M. I. A. A. back went around end for the counter. The half ended Alma 37, Ferris 0.

Four came in the third period. Alma kicked off and Ferris, as usual, was forced to punt. H. Catherman bringing the kick back 40 yards to the F. I. 40. Alma carried it to the 25 yard mark and McDonald heaved a pass to Elias for the counter. Alma kicked and again forced F. I. to punt and Harley ran 65 yards for the touchdown. McDonald dropkicked the goal. After Alma had forced F. I. to punt again, following the kickoff, a few plays were pulled and Elias heaved a pass to Carty, pass and run totaling 27 yards and bringing a counter. Alma kicked and F. I. had to punt again. Harley returned the kick 18 to the Ferris 22 yard mark. McDonald made 18 and Orr hit the line for the touchdown. McDonald dropkicked the goal. Score end of third period, Alma 64, Ferris 0.

Two touchdowns came in the final quarter. Desrochers attempted a dropkick right after the quarter opened from the Alma 40 yard line. It went true, but fell 5 yards short of the goal into the waiting arms of Harley Catherman and given fine interference he went 95 yards to the goal. Ferris then kicked and Alma carried it straight to a touchdown. A few plays, and aerial heaves Elias to R. Catherman for 16 and Elias to Tebo for 11, brought the ball to striking distance. Burton hit for 10, and then on a second play smashed over, making the score Alma 76, Ferris 0, when the attempt for the extra point failed.

The passing of Elias and McDonald was of a high order, as was their work in carrying the pigskin. Each lost just one pass that they attempted, whereas the Ferris team worked only one pass successfully during the game. The passes heaved by Elias and McDonald were ten in number and the eight successful ones yielded a total of 162 yards.

Alma	Ferris
Carty	L. E. Brunner
Tarrent	L. T. Imeson
Riley	L. G. Braames
Wright	C. Guilliani
Partee	R. G. Schlecht
Coash	R. T. Riley
Shaver	R. E. Rumsey
Elias	Q. B. Griffin
H. Catherman	L. H. Appleford
Orr	R. H. Danlente
Burton	F. B. Desrochers

Final quarters:

Alma	25	12	27	12	76
Ferris	0	0	0	0	0

Touchdowns—H. Catherman 3, Elias 2, Carty 2, Shaver, R. Catherman, Orr, McDonald, Burton. Goals by dropkick—McDonald 2, Elias 2. Substitutes—McDonald for Burton, Lamb for H. Catherman, Wyant for Carty, Peters for Tarrent, Calkins for Riley, Tredway for Wright. McNaughton for Partee. Anderson for Coash, Tebo for Shaver, R. Catherman for Elias, Langton for Orr, Sabbag for Langton. Huntley for Lamb, Wright for Tredway, Tarrent for Peters, Carty for Wyant, Shaver for Tebo, H. Catherman for Sabbag, Bentley for Carty, Burton for McDonald. Quarters—15 and 12 minutes. Referee—Crisp (Ypsilanti.) Umpire—Mullin (Western State Normal.)

MEET KAZOOK NORMALS

Thursday afternoon Coach Roy Campbell's light but fighting Alma collegians will face one of the state's hardest elevens, when they go up against the Kalamazoo Normal aggregation, which last season played a long, hard schedule, and yet managed to go through without even being scored upon. The eleven this year is being rated as being as capable as the one of a year ago.

The Normals will be certain to be favorites when the game opens, but it is certain that if the Maroon and Cream will battle the way that it did against the University of Detroit aggregation the Normals will find it a real difficult proposition to walk off with the game. The Maroon and Cream displayed a wonderful fighting ability on the defensive, and except for Alma's own errors it would not have been possible for Detroit to have put over a touchdown.

With an offensive that is constantly on the gain in strength, and a defense that should still show considerable improvement Alma will be

SHOES

Shoe Repairing
Shoe Rebuilding
Leather Working

Chas. R. Plotner
330 S. State St.

in shape Thursday to give the Pedagogues a hot fight right from the start. Alma, by the luck of the game, may be beaten in the fray, but even if that should happen, it is certain that the Maroon and Cream will be defeated in a fray in which credit will go to a team that can wage a grim and determined battle in the face of defeat.

It is hard to defeat a team that can battle like this Alma team can battle, however, and the fans of Alma, both college and town, are hopeful for a message Thursday evening that the Western State Teachers have been humbled by a Michigan Intercollegiate team for the first time in years.

LIBRARY NOTES

The display in the library show case shows various plates concerning Botany. Especial emphasis is laid on those phases which would interest the average person in the fall and winter.

Miss Rose B. Phelps, assistant to Miss Ward in the library last year, holds the position this year of Assistant Reference Librarian at the University of Texas.

FROSH GIRLS GIVEN PARTY BY KAPPA IOTA

(Continued from page one)

guerite Brown of Illinois cruelly wrested the national record from "Peg" Poole. The winning grin measured four and one half inches. In the one-yard dash, consisting of pushing a penny across the floor with her nose, Josephine Peavy held to her record of last year by winning first place for Michigan. Elsie Washburn, a representative of Michigan won the high-jump which is merely catching a suspended marshmallow in the mouth in true "bob the apple" fashion.

The next contest, the javelin throw, was won by Katherine Lee of Minnesota whose tooth-pick went much further than any of the others. The last and cleverest race, the relay, was won after a hard fight by Yale. The two contestants, Wilhimine Ritter and Ethelyn Adams were at last able to pull the hardest.

Yale scored the highest and won first place in the events of the meet. LoReta Neely, in a most oratorical manner presented to this college the silver loving-cup which was borne on a pillow.

At once the track meet was forgotten in the dances that followed. Everyone chose a parter and made the most of the lively music.

But soon the Kappa Iota girls grouped about the piano and sang their songs to the guests.

Then came the eats and OH—What Eats. First there were sand wiches cut in clever shapes, dainty salad, celery stuffed with pimento cheese followed by coffee. The second course was ice cream in violet and gold, the Kappa Iota colors, and cake.

Rent a Ford
Drive it yourself

PUTNAM BROS.

412 Pine St. Phone 18

Taxi Service
Baggage Transfer

SEE

MERRIAM

for

Memory Books

Films developed
Prints for sale



Plenty of new Silks and
Wool Dress Goods
at

PROUD'S

After this delicious lunch, the girls cheered for Kappa Iota. The time came too soon when the adieus were said and the merry exclamations of the success of the party. Everyone left full of 'pep' and extreme enthusiasm which had abounded all evening, and which had made the party such a success.

A. B. Scattergood

Caters to the
College Trade

Let us care for
your needs in

Party Decorations

Favors

Dance Novelties

Crepe Paper

Prompt Service and Reasonable Prices are what you mean when you say

THE COLLEGE SUPPLY STORE

J. E. CONVERSE
JEWELER

THE STRAND THEATER

TUESDAY-WEDNESDAY
VIOLA DANA

—in—

"They Like 'Em Rough"

Dan Mason Comedy

THURSDAY and FRIDAY
D. W. Griffith's

—in—

"WAY DOWN EAST"

Fox News and
Fun From the Press

SATURDAY
HOUSE PETERS

—in—

"Lost and Found"

Mermaid Comedy

SUNDAY and MONDAY
GLORIA SWANSON

—in—

"Bluebeard's Eighth Wife"

Lloyd Hamilton Comedy
and Fox News

The Gratiot County Gas Co.

ALMA, MICH.

Quality—Service—Cleanliness

EICHENBERG & COMPANY

ALMA'S LARGEST GROCERY

For the Best in

BARBER WORK

See Us.

We give you SERVICE with three chairs in a clean, healthy shop.

Open until 7:30 p. m.

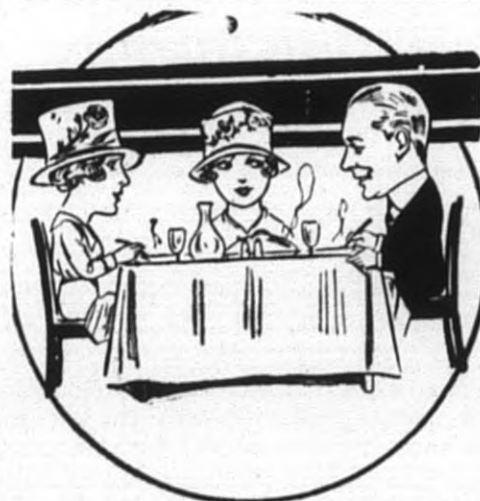
Butler & Dumas
Beneath the Wright House.

HOME BAKED GOODS

ROGER'S GROCERY

Phone 173

123 W. Superior St.



A Table for Three

at Nick's restaurant and you could not ask for anything jollier! Good food well cooked and charmingly served, and the waiter's check won't give you heart palpitation. A mighty nice, cozy dining place with no frills and furbelows but with real food, and you don't feel hungry when you leave.

The European Cafe
The Place for the People

MURPHY'S DRUG STORE

Party Favors

Place Cards

Programs

Fine Stationery

YOUR PRESCRIPTION DRUGGIST

You can buy Electric Bulbs, Curlers,
Hot Plates and Everything Electrical

EXPERT REPAIR SHOP

Alma Electric & Battery Co.
East of City Hall

CRANDELL-SCOTT CO.

Furniture, Rugs, Pictures and Framing

ALMA STATE SAVINGS BANK

Capital \$50,000—Surplus \$30,000.00

WE PAY 4% ON
TIME DEPOSITS

SAFETY BOXES
FOR RENT

The College Store
New Fall Shades
of Pumps and
Oxfords



Artistic Picture Framing

G. V. WRIGHT

**WINSLOW BROS.'
DRUG STORE**

Parker Fountain Pens—all styles
Eversharp, Parker, and Ingersol Pencils
Developing and Printing—24-hour service
Connor's Fancy Brick Ice Cream
Whitman's and Morse's Chocolates
OPPOSITE CITY HALL

New Victor Records released
every Friday.

SAWKINS MUSIC HOUSE

208 E. Superior St.

Shoe Repairing Hat Cleaning
Shoe Shining
ALL IN ONE SHOP

We have installed up to date machinery for repairing shoes,
and are prepared to give satisfaction at a reasonable price.
We use first-class material and do skillful work.

The United Hat Cleaners & Shoe Shop
122 E. Superior St. Pete & Jim, Prop's

When the frosty mornings warn you
That the fast advancing Fall
Means shirts' and gloves, and neckwear,
Plus overcoats and all—

COME TO

JOHN M. BURKHEISER

(Lyric by Bob Wyatt, Adv. Mgr.)

Idlehour Theater

Prices: 10c and 20c to all shows

Tuesday and Wednesday

"When the Devil
Drives"

with
LEAH BAIRD

SATURDAY

Wyndam Standing

—in—
"THE ISLE OF
DOUBT"

Matinee 2:30 to 5:00 p. m.

Thursday and Friday

"The Broken Wing"

with
KENNETH HARLAN and
MIRIAM COOPER

Sunday and Monday

POLA NEGRI

—in—
"MAD LOVE"

Continuous show from
2:30 p. m. to 11 p. m.

GLEE CLUBS GET EARLY START

(Continued from page one)
fred Porter, secretary and treasurer;
Miss Kathryn Joiner, librarian;
and Miss Greta Muir as business
manager.

The early enthusiasm of the Clubs
portends a successful season in the
musical line for Alma. All depart-
ments of both Clubs are supported by
a large number of last year's mem-
bers so that the organizations are
well-balanced in spite of the losses
suffered through graduation last
spring.

For the past few years, Alma's
Glee Clubs have been very success-
ful as well as being worthy "booms"
to the college. Last year the men's
organization toured northern Mich-
igan and Upper Peninsula cities on a
record breaking trip, appearing be-
fore capacity audiences with brilliant
success. As yet no plans have been
made regarding this year's itinerary
as the organization is contemplating
a trip through the Thumb and south-
ern Michigan as a change from the
tours of past years.

The women's Glee Club had a very
talented organization last year, ap-
pearing with unusual success before
local audiences. It is hoped that a
larger itinerary may be arranged
this year by the women as their abil-
ity deserves a much greater recogni-
tion.

The personnel of both clubs has
been practically decided upon, fol-
lowing the recent try-outs and will
appear as follows:

Men's Glee Club

First Tenor:

Lee M. Sharrar, Alma; Myron
Hughes, Royal Oak; Harold Baily,
Flint; Cleon Dey, Northville; and
Russell Catherman, Farmington.

Second Tenor:

Howard West, Crosswell; Stanley
Fraser, Harbor Beach; Henry Hol-
land, Alma; Carleton Neeland, Man-
celona; and Gilbert Davis, Royal Oak.

First Bass:

Richard Boyd, Traverse City; Lo-
well Hudson, Merrill, Forest Free-
man, Bay City; George Boyd; Ken-
neth Wolfe, Alma; and Frank Prou-
ty.

Second Bass:

Elliot Crooks, Alma; Hugh Tar-
rant, Harbor Beach; Erwin Merriam,
Flint; Burroughs Rathsburg, Imlay
City; Robert Wyatt, Rudyard; and
Phil Lewis, Alma.

Women's Glee Club

First Soprano:

Pauline Strick, Brighton; Beatrice
Cottle, Rudyard; Ethel West; Winni-
fred Mills; Helen Sharrar, Alma;
Louise Barstow, St. Louis; Alvina
Curtis, Flint; and Beulah Watson.

Second Soprano:

Kathryn Jenkins, Royal Oak; Mar-
garet Holmes, Alma; Mable Brad-
ford, Alma; Virginia Trmaine, Che-
boygan; Dorothea Young, Alma;
Mary Gerow, Cheboygan; Margaret
Ely, Alma; and Elizabeth Jenkins,
Royal Oak.

Alto:

Greta Muir, Bay City; Esther Oldt,
St. Louis; Winifred Porter, Flint;
Margaret Morrison, Williamsburg;
Marian Grover, Alma; Kathryn
Joiner, Alma; Margaret Foote, New-
berry; and Esther Zinn, Alma.

ALUMNI

"Bob" McAllister writes that busi-
ness is picking up. He is engaged in
the real estate business in Oak
Park, Ill. together with his father
and brother.

Word comes from Lucius Mills '01
whose name has been lost from the
alumni colum for some time. Mills
is now head of the Mills Dry Goods
Company, located at Lansing, Mich.

Stephen S. Nisbit, '16, has been
chosen superintendent of the Fre-
mont schools to succeed E. H. Bab-
cock who recently resigned to ac-
cept a similar position with the
Grand Haven schools. Nisbit has
been principal of the Fremont High
for three years.

We are in receipt of the announce-
ment of the marriage of Miss Flo-
rence Purdy to Mr. Clinton Seely, at
Gagetown, Mich., August 28. Miss
Purdy will be remembered with
the class of '20 and Mr. Seely with
the class of '18.

G. B. PORTER

JEWELER and
OPTOMETRIST

Daily Papers and Magazines

Think of
W. E. BAKER
College
Photographer
For Pictures

STAR DYERS & CLEANERS

Cleaning, Pressing, Dyeing
and Repairing

Phone 92

DEAN CHAMBERS, College Agent

JUST RECEIVED! A new line of latest style Fall Hair Cuts,
in all sizes. Hurry and get yours before they are all picked over.

DAVIS BARBER SHOP

So. of Eichenberg's Grocery

324 So. Woodworth Ave.



BURGESS



Drugs and Stationery

Hot Chocolate, with wafers

LUCHINI'S CONFECTIONERY STORE

We carry the most complete line of candy
in this vicinity.

Come and see us.

THE M. W. TANNER CO.

Saginaw's Finest Department Store

The College Restaurant

When you are hungry, don't forget the—

Paris Cafe

—where they serve the best meals and their famous coffee.
NEATNESS, SERVICE, QUALITY

LOOK-PATERSON DRUG CO.

Two of the foremost lines of candy obtainable

Liggett's

A standard high class candy
with a national reputation.
Many of the assortments
are beautifully boxed for
gifts.

Gilbert's

A quality line, led by the
famous "Panama" box. An
excellent line. Always fresh.
A gift that is never out of
place.

A complete line of bar candies, absolutely fresh

THE REXALL STORE

Patrick-Duluth

Sweaters

Mackinaws

Sheepskins

Golf Hose

Gloves

Toques

Everything for Cold Weather
in Knit Goods



from
sheep that thrive in the snow

G. J. MAIER

"Men's Wear Store"

THE WOMEN'S WEAR STORE
 Millinery, Coats, Dresses, Shirts, Waists, Jackets and Furs
 Hats made and retrimmed
 Phone 93 MISS I. SPAULDING, Mgr.

Quality Service
RECREATION BARBER SHOP
 NIAL BRADFORD, Prop.

"Say it with flowers"
 Their Best Recommendation—
 They make folks happy
 As near to you
 as your telephone
D. KLEINHANS FLORAL CO.
 ALMA STORE 323 Woodworth Ave. GREENHOUSES St. Louis
 Member Florists' Telegraph Delivery

SHREEVE & BUCCANNING
 Chevrolet and Oakland
 Automobiles
 Complete Line of Auto Supplies and Accessories
 Next to Strand Theater ALMA, MICH.

For
Quality Dry Cleaning
 Pressing and Repairing
 CALL
ALMA CITY DRY CLEANERS
 JAS. ROSE, College Agt.

SURE
 The manufacture of bakery goods for every
 occasion is our specialty. Our prices are right
 and our goods are excellent.
 YOUR PATRONAGE SOLICITED
THE MODEL BAKERY
 216 East Superior St.

DeLuxe Candy Co.
The College Store
 The largest and best in town
 Home Made Candy, Ice Cream, Ices,
 Hot and Cold Lunches
 our specialty
 We are prepared to take care of your requirements
 promptly and we give special prices on large quantities.
 Come and get your Polar Bars, 10c each. Made fresh daily.
 Special price on large quantities
 Order your ice cream bricks four hours ahead.
 We make them fresh.
DELUXE
 PHONE 89 325 STATE STREET

Philomathean Holds Open Meeting Mon.
 The open meeting of the Philomathean Literary Society was called to order Monday evening by the president, Miss Margaret Poole. Roll call was responded to by the assigned topics which dealt with the subject of women in all parts and occupations of the world. The motion dispense with the usual order of business and proceed directly to the program was passed.
 The first number on the program was a vocal solo, "Silent as the Night" by Esther Oldt, accompanied by Rhea Joy Steenson. The second number was a clever paper, "Woman's Place in the World" by Christine Decker. The third number, a whistling solo by Margaret Holmes accompanied by Mable Bradford.
 The last number was a one act play entitled "The Exchange." The story deals with the everlasting desire of mankind to change himself and to be some one else. The part of the judge was skillfully enacted by Miss Margaret Poole. As the judge she proved herself absolutely immune from the beguiling charms of the "Vain Flower" which was interpreted by Miss Helen Scott. Zada Doerr as a typical prim young man and Rhea Steenson as the much sought after rich man took their parts very well. The "Imp" the "Scuse me judge" little fellow was completely acted by Ruth King.
 The meeting was then adjourned.

BETA TAU EPSILON
 The regular meeting of Beta Tau Epsilon was held in the society rooms Monday, Oct. 1. President Apsley called the meeting to order and many items of important business were discussed. The work of the society seems to be getting under way in a very promising manner, and all indications point to a banner year for this, Alma's newest men's society.

NIGHT SHIRT KLAN PARADE STREETS

(Continued from page one)
 boys synecopated "How Dry I Am", but either they hadn't finished eating their ice cream or else they were stage struck for they failed to finish their song. Peculiar too, they were getting much outside help.

The frightened frosh were then displayed at the DeLuxe and "Rad" Hughes attempted an instrumental sob entitled "Wat a Wonderful Girl," but was cut off short by the ill mannered uppers. Singing did not seem to be popular but "Al" Moore made a noble attempt at it. Chambers was asked to give a talk on "His First Experience with the Women" but he looked so long winded and pleased with the subject that he was soon silenced and no more sounds were uttered except those made by the freshmen's eating the gang's yells of appreciation to the hosts.

The Paris Cafe was visited by the stampee but the yearlings were let alone; for how could the frosh talk with their mouths full of splendid doughnuts?

The Idle Hour Theater was taken in and Huntley deserves much credit for his good work at the piano there. "Red" Clark gave some fatherly advice on how to win a flag rush and Kreiger entertained with "Louisville Lou." The Alma High football star's duet gave their High School song in a clever fashion and the Idle Hour was bid farewell.

The climax of the evening came when the traditional weighty members of the college clogged on the stage of the Strand Theater. The two showed that the big feeds could not still their trembling limbs and although Hartman's night shirt was a hindrance to effective clogging, the boys will admit that both tripped a wicked toe. McDougal seemed perfectly at home with the snappy tune that Huntley played. Cleon Dey was tortured by being made to sing, but his voice pleased the listeners. Bill Dempsey again. The president of the class, Reed Ruggles, defied the college and the world with his fast asleep frosh.

The grand final at the Strand stage which consisted of singing and cheering by the frosh, was followed by a cat-tail serenade to the women of Wright Hall. The birdie chirped at the gym just before the boys turned in and striking pictures were proffered by our friend Baker.

THE WRIGHT HOUSE
 Alma's Best Hotel

"Old Joe The Tailor"
 201 1/2 East Superior Street
 Upstairs over Ellison's Tire and Sport Shop
 High Grade Dry Cleaning
 GENERAL REPAIRING REMODELING AND PRESSING
 Freddy Sabbag, College Agent

FRUIT - FRUIT - FRUIT
 CANDY, CIGARS, TOBACCO AND SOFT DRINKS
 By looking over our prices in general, you will no doubt come to the conclusion that if you need anything in the line of Fruit and Iceberg Head Lettuce we are the people that can serve you the best on the market.
 Two Quality Stores
ALMA & ST. LOUIS FRUIT CO.
 PICCOLO BROS., Prop.

THE CITY NEWS STAND
 A. DIETZ, Proprietor
 Complete stock of Current Magazines and Periodicals
 DAILY PAPERS BOOKS
 We can get any book for you in a very short time.
 Agent for the Wolverine Portable Phonograph and Vocalion Red Records.

Meals That Taste Like Mothers
 Tickets \$5.00 for \$4.00
The Tiffin Cafe

The "1900" Electric Shop
 Electrical Merchandise of Quality
 Student Lamp \$2.00 up
 Electric Curling Irons 1.75 up
 Boudoir Lamps 3.75 up
 WE GROW A LITTLE EVERY DAY

HANSEN MOTOR TRANSIT CO.
 Saginaw-Alma-Greenville Schedule
 Central Standard Time

PM	PM	PM	AM	AM	AM	AM	PM	PM	PM	
7 00	3 00	1 00	10 00	8 00	Saginaw East Side	9 30	11 30	3 00	5 30	8 00
					215 So. Wash. Ave.					
7 10	3 10	1 10	10 10	8 10	Saginaw West Side	9 20	11 20	2 50	5 20	7 50
					Schuck Hotel					
7 50	3 50	1 50	10 50	8 50	Hemlock Restaurant	8 40	10 40	2 10	4 40	7 10
8 05	4 05	2 05	11 05	9 05	Merrill LaDuke's Confect.	8 25	10 25	1 55	4 25	6 55
8 20	4 20	2 20	11 20	9 20	Wheeler Garage	8 10	10 10	1 40	4 10	6 40
8 25	4 25	2 25	11 25	9 25	Breckenridge Restaurant	8 05	10 05	1 35	5 05	6 35
8 45	4 45	2 45	11 45	9 45	St. Louis Park House	7 45	9 45	1 15	3 45	6 15
9 00	5 00	3 00	12 00	10 00	Ar Alma Lv	7 30	9 30	1 00	3 30	6 00
					10 15 Lv Waiting R'm Ar			12 45		5 30
					328 State St.					
			3 15		10 30	Elwell			12 30	5 5
			3 30		10 45	Singluff's Store			12 15	5 00
			3 45		11 00	Riverdale Green's Rest.			12 00	4 45
			4 00		11 15	Vestaburg Tupper's Hotel			11 45	4 30
			4 10		11 25	Cedar Lake Flag Stop			11 35	4 20
			4 25		11 40	Edmore Hotel			11 20	4 05
			4 40		11 55	McBride Flag Stop			11 05	3 50
			4 55		12 10	Stanton Hotel			10 50	3 35
			5 10		12 25	Sheridan Hotel			10 35	3 20
			5 30		12 45	Millers Flag Stop			10 15	3 00
						Greenville				
						Hotels & Wtr. Room				

Sunday and Holiday Buses leave Saginaw for Alma at 8:00 A. M., 3:00 P. M., 7:00 P. M.
 Sunday and Holiday Buses leave Alma for Saginaw at 7:30 A. M., 1:00 P. M., 6:00 P. M.
 Regular week day schedule on Alma-Greenville Division on Sunday and Holidays.
 Alma Phone 51
 H. C. HANSEN, Mgr., Alma, Mich.

THE ONLY PLACE IN TOWN
 to get your shoes rebuilt, and repaired, with a guarantee in back of it, is at 207 E. Superior St.
 While you scratch on your pads, think of
SHOE-N-HAT SHOP
 The College Shoe Store The Largest in Town