

The Almanian

STUDENT PUBLICATION OF ALMA COLLEGE

VOLUME 27

ALMA, MICHIGAN, TUESDAY, OCTOBER 31, 1933

NUMBER 6

ZETAS FETE NEW MEN AT SMOKER

Games, Card-Playing Candy and Food Combine to Make a Merry Evening.

Starting at 7:30 o'clock Wednesday evening, October twenty-fifth, the Zeta Sigma house was a scene of mirth, merriment, and melody (with radio, piano, guitar, and songs furnishing the latter) as the members of that fraternity played host to their freshmen and faculty guests at the annual Zeta Sigma Smoker. This gala affair marked the end of the "rush" season for men preliminary to pledging by all the fraternities.

After being shown through the house, the guests, letting their cares go up in smoke, lost little time in grouping together for games of everything from King Pedro to Contract Bridge. For several of the freshmen, who had the opportunity to "dust off" the back of "Loony" Smith's trousers as a result of a game of hearts, the evening was certainly a very successful one. An abundance of cigars and cigarettes were soon transformed into smoky air, and of course there was plenty of candy.

Russell Hubbard was master of ceremonies during the course of the program, and after getting everyone in as compact a group as possible, he introduced the members of the Faculty that were present and the members of the fraternity. President Louis Meisel was the first speaker and welcomed the visitors on behalf of the fraternity. Dean Mitchell then spoke on the "History of the Fraternity" and was followed by President Crooks, who gave a short talk on fraternities in general. Lawrence Smith, Cac Erickson, and "Ukelele Ike" Campbell were called upon next to render some musical numbers, and then some old time ballads were sung by Erickson and Mutchler (imported from the Alma Booster Club). The program ended with Erickson playing on his mouth organ and singing the "Newberry National Anthem." After this inspiring song, everyone marched to the next room to get their refreshments in the form of appetizers, and coffee.

Everything that included what kept for themselves did what they journeyed and serenaded with music, parades, and sweet music. They departed for points east with the thought of such festive occasions.

Former members of the Phi Sigma Pi, President H. M. Crooks, Arthur J. Ewer, C. R. R. DuBois, Dr. Charles DuBois, Dr. MacInnes, and F. R. Phillips.

DR. SCHREIBER TALKS TO I. R. C. ON HITLER AND JEWISH PROBLEMS

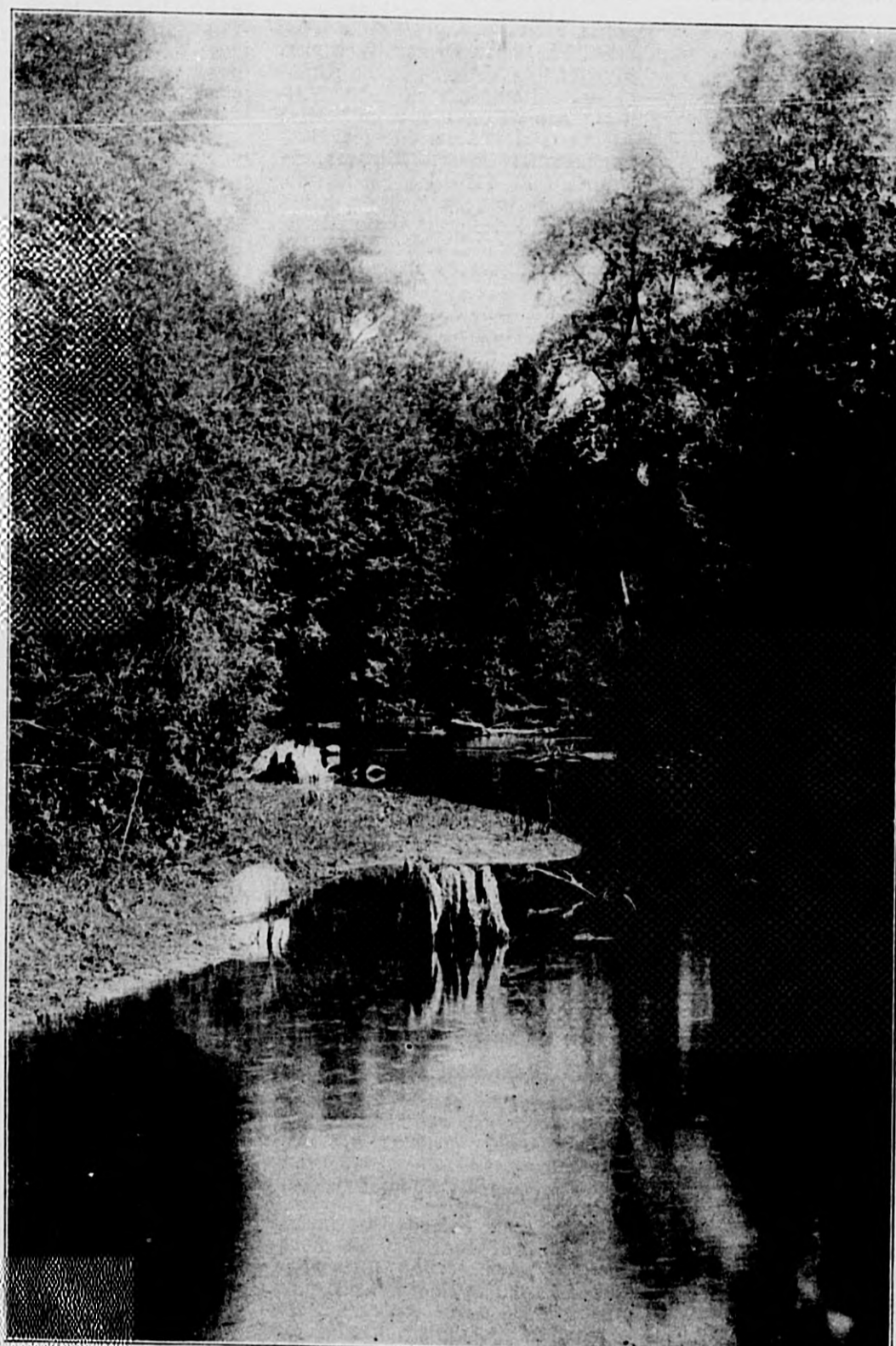
"Hitler is no more a dictator than Roosevelt", Dr. Theodore Schreiber told thirty-five students and Faculty members who attended the initial program of the International Relations Club at Wright Hall on Thursday. "His power comes from the vast majority of the people, was voted by the Reichstag, and is entirely constitutional."

Dr. Schreiber, in an effort to present the German attitude toward Chancellor Hitler and the recent Jewish antagonism, pointed out that for the first time since 1914 the Germans had united to support a national government. The unbloody revolution is unparalleled in modern history. The people are fully aware of Hitler's stand on their problems and are backing him with greater enthusiasm than they have supported any other leader in modern times.

Referring to the recent driving out of the Jews, Dr. Schreiber analyzed the German philosophy of life, ethical code, and general culture, and contrasted it with Hebraic outlook, and the tendency of the Jews to avoid assimilation. He spoke of the constant conflict of creeds, although this aspect is now subordinate to their varying economic ideals, the real battleground at present. The anti-Semitic prejudice of Europeans in

(Continued on page 4)

"Sons and Daughters Ever Faithful"



Welcome Home, sons and daughters of Alma-on-the-Pine! Come back on Friday evening and Saturday for one more walk along the banks of the Pine, for a stroll among the trees, or a pause on the Museum steps. Walk again through the old corridors, and bring back memories of the old days. Visit with your professors, your classmates, and the sons and daughters of your classmates. Become once more a part of the old Alma spirit when the boys "go up the field" to Albion Saturday. Your Alma Mater welcomes you!

HOMECOMING CALENDAR

INVITATION AND PROGRAM

NOVEMBER 4, 1933

FRIDAY, NOVEMBER 3

- 7:00 P. M. Pep Meeting—Memorial Gymnasium.
- 8:15 P. M. Drama Club Play, "A Full House"—Memorial Gymnasium. Tickets 35c.

SATURDAY, NOVEMBER 4

- 12:00 Noon Dinner at Wright Hall (Tickets 40c). Please make reservations.
- 1:15 P. M. Parade.
- 2:00 P. M. Albion vs. Alma—Bahlke Field. (Admission 75c).
- After the Game: Coffee and doughnuts at the President's House.
- 6:00 P. M. SORORITY DINNERS.
Alpha Theta, Philomathean, Kappa Iota. Special tables at Wright Hall.
- 7:00 P. M. FRATERNITY STAG BANQUETS.
Zeta Sigma, Wright House; Phi Phi Alpha, Wright House; Beta Tau Epsilon, Wright House.
- 8:30 P. M. Senior Dance—Memorial Gymnasium. Fred Spahr's Band. Tickets 25c.

Barker Brown Receives Appointment at U. of M.

Barker Brown, '32, of St. Louis, holder of the Michigan scholarship in chemistry last year, has just been appointed assistant to Dr. Lewis, Dean of the School of Pharmacy at the University of Michigan. Brown studied last year under Dr. Lewis, then head of biology and chemistry divisions, and won the appointment through his recommendation.

At Alma Barker Brown was an honor student, member of Phi Sigma Pi, valedictorian of his class, debater, orator, and winner of the Scattergood Trophy, awarded annually to the most representative student of Alma College.

Out of the past 31 Alma-Albion grid clashes, Albion has taken fifteen games and Alma thirteen, with three ties.

Drama Club, A. C. Choir Help Townspeople With Grangers' Convention

Alma College will be host to a group of younger Grange members tomorrow afternoon and will present a varied program for this group in the Chapel at two thirty. The younger Granger group will be composed chiefly of young people from Gratiot County with perhaps a few others from the surrounding territory. These people are meeting in connection with the State Grange Convention which is being held in Alma Tuesday, Wednesday and Thursday of this week.

The program which will be presented will include several numbers by the Alma College trio, harmonica renditions by Fern Erickson, piano selections by Mae Nelson and a brief speech by

(Continued on page 3)

PHI PHI ALPHAS ADD FOUR TO MEMBERSHIP

Phi Phi Alpha Fraternity, following its usual custom of pledging upper classmen who have been on the campus before, pledged four sophomores and one second semester freshman last week. The upper class men are Leroy and Riley Block, Lester Eyer, and Melvin Fuller. Leo Washburn, the freshman, was a pledge of Phi Phi Alpha last year as a first semester freshman and is renewing his pledge this year. These men will be taken into the fraternity before initiation of new men on the campus.

With the Home Coming Day less than a week away Phi Phi Alpha is completing plans for its annual Stag Banquet to be held the night of the Homecoming in the Rotary room at Wright Hotel. Bill Boyd is general chairman and Bill Johnson is to be the toastmaster.

HOMECOMING SET FOR SATURDAY

Drama Club Play and Snappy Pep Meet to Open Annual Festivities Friday.

A big pep meeting and the Drama club play, "A Full House" will usher in the annual Homecoming Celebration, both taking place this Friday night. The "Big Day" events begin Saturday morning when the Hood Museum is opened. Immediately after dinner in Wright Hall, decorated cars will form a parade. "Be Scotch" is the theme of the affair. The parade winds up at Bahlke Field where Albion invades Alma to attempt to repeat last year's victory. The game is followed by a reception at the President's home. Fraternity and sorority banquets furnish the evening meal while the whole affair will culminate at the Annual Dance, sponsored by the Senior Class this year. Professor Raymond Ditto, head of the Physics department, is chairman of the Faculty committee that has been working on the week-end doings. Professors R. W. Clark and Arthur Weimer, heads of the Mathematics and Economics Departments, respectively, are working with the Boosters' Club delegates, Herbert Estes, chairman, Jean Cameron, and Aileen Waters.

Before a huge bonfire which will be prepared by the freshmen, in front of Memorial Gymnasium the entire student body and others will assemble at 7:00 p. m. for the big pep meeting. Led by cheerleaders, Bob King and Gordy Mann, assisted by the Band, the smallest college Band in the M. I. A. A. will prove once more that she is "the peppiest college in the state." Alumni, professors, players, and students will give short pep talks.

Since the whole scheme is Scotch, the cheerleaders have a surprise in store, and in the yelling and acting aspects only are Bob and Stubby negatively Scotch.

The curtain of "A Full House" rises at eight o'clock in the Gym. Long hours of daily practice and hard work, under the direction of Janet Hill have not only whipped the comedy into presentable condition but have exceeded that by far. Everything is down pat and the cast is awaiting that crucial moment.

The doors of the Hood Museum are slated for their annual opening at ten o'clock, remaining thus until game time. Full information on the contest can be found on the sports page.

Coffee and doughnuts are to be served at the home of President and Mrs. H. M. Crooks on Superior street, immediately following the game.

Alpha Theta, Philomathean, and Kappa Iota Literary Society banquets are scheduled for six p. m. in Wright Hall. Zeta Sigma, Phi Phi Alpha, and Beta Tau stag banquets will take place in the hotel.

(Continued on page 2)

SONS AND DAUGHTERS SEEK OUT NEW PATHS AT ALMA-ON-THE-PINE

For nearly fifty years Alma's man and maid have strolled along the banks of an ever-murmuring Pine. Romance that started in dining-room, study-hall, or on the museum steps, was more often than not fostered here. The literary minded, and such there were, mayhap remembered Wordsworth: "Wilt thou then forget that on the banks of this delightful stream, we stood together?" Or maybe it was simply, "Would you like to take a walk?"

Be that as it may, a college really begins to develop a traditional atmosphere when "sons and daughters ever faithful" look back with yearning to the days of their youth and plan similar joys for their own offspring. This year at Alma there are at least seventeen students whose parents attended or graduated here:

Vera and Kenneth Bradford, daughter and son of R. D. Bradford; Dorothy and Charlotte Striffler, daughters of Fred Striffler; Jack Clark, son of Romaine Clark; Betty Welsh, daughter of Fred Welsh; Earle Tomes, son of Earle Tomes; Allen MacDonald, son of Lois Fraker MacDonald and E. Blake MacDonald; Betty Tenney, daughter of Bessie Brody Tenney; Bob Sayles, son of Alex Sayles; Norman and Vincent Wright, sons of G. V. Wright; George Mitchell,

(Continued on page 4)

The Almanian

STUDENT PUBLICATION OF ALMA COLLEGE



Entered as second-class matter Sept. 24, 1907, Act of 1879, Alma, Michigan.

Published by The Almanian Publishing Company
614 W. Superior St., Alma, Michigan,
Weekly during the school year except vacation periods.

Subscription Price (30 or more issues) \$2.00 per annum

Editor **EDITH M. DAVIS**
Associate Editor . . . WARD CAMPBELL
Associate Editor . . . MAC OAKLEY
Associate Editor . . . ARTHUR BOYNTON
Desk Editor . . . EARL TOMES
REPORTERS—Helen Lelsz, Maryery Spendlove, Gertrude Elliot, Edward Nash, Jane Edwards, Dorothy Striffler, John Boergert, Robert Culver, Alfred Fortino.
Business Manager **BENJAMIN LEYRER**
Ass't. Business Manager **WILLIAM JOHNSON**
Circulation Manager **JANE RICE**

"SONS AND DAUGHTERS EVER FAITHFUL . . ."

Alma College is welcoming her sons and daughters back to the Campus for the annual Homecoming celebration this week-end. Such a welcome means much more than the extension of an invitation to Alumni for their return to scenes of undergraduate activities. It is also a request for them to renew their relationships with the other divisions of the institution as integral parts of the College itself.

A college never hopes to accomplish more during the four years of undergraduate life than to start students along the road of correct thinking and purposeful living. Success in this undertaking can only be measured in future years and in the lives of the sons and daughters who began their search for life and its meaning under the protective wing of their Alma Mater. Attendance at the Homecoming celebration is one of the ways in which alumni can renew their connections with other parts of the College which have helped to mold their present attitudes, desires and ideals.

But Homecoming is only an outward expression of that mutual love, trust and commonness of purpose which binds the institution together. This real unifying spirit must be in existence throughout every day of each year if the College is to function as a complete entity. As parts of that entity the members of former student generations need hardly be reminded of the fact that their Alma Mater looks to them for material and spiritual assistance in the building of a greater and finer institution. The alumni, along with the other parts of the institution, are faced by the task of building the Alma College of the future—a college which will be adequate and ready to extend the opportunity of preparing for purposeful life to each new student generation in terms of the problems and situations brought about by a changing world.

Yet, all too frequently the graduates forget that they are a part, perhaps the most important part, of the College itself. Each Homecoming celebration is sponsored in the hope that it may re-awaken the sons and daughters of the College to a more complete realization of the parts which they are expected to play in helping to achieve the ideals of their Alma Mater. Let every alumnus, whether actually present at Homecoming or not, dedicate himself anew to service in the very important work of Alma College. Then all of them may rest assured that they will in reality be "sons and daughters ever faithful."

WELCOME THE GRANGE!

For three days this week, beginning today, members of the State Grange will be the guests of Alma. Several College organizations are co-operating with the town Booster Club in an effort to entertain the Grangers and make their stay here memorable. The College is offering the facilities of the Memorial Gymnasium for their use at the annual banquet tomorrow night.

A year ago Mr. Robinson, along with others, was instrumental in urging the Grange to choose Alma for convention purposes this year. This makes them guests of the College as well as guests of the City. And as guests of the College they are entitled to attention from us during their brief stay here. Some of them may be prospective students or parents of prospective students. If, during the next few days, we see strangers wandering around the Campus or apparently interested in our buildings, let's approach them in a friendly manner, and be as helpful as we can. Remember Alma's reputation for friendliness as well as pep!

ORIGINAL HOMECOMING CELEBRATED IN 1912

On Saturday Alma will again celebrate her Homecoming with a football game with Albion. Homecoming has come to be a definite part of the college activities for the students and the Alumni. Commencement and Homecoming are the two links that remain to connect the present student body with former students.

Alma's first Homecoming was in 1912. Prior to this, the Alumni had gathered in annual banquets in various parts of the state. This banquet usually occurred in the fall, and was patterned on the fall parties given by the larger schools in the east. In 1912 Homecoming was a definite event, but it did not prove so popular as expected and after a few years was abandoned.

The interest still prevailed among the student body for some kind of a fall party as well as the spring gatherings at Commencement, which have always proved so popular. Since the fraternities usually gave banquets in the Fall, they finally decided to cooperate and to have their banquets on the same date so that a number of Alumni might return at one time. The sororities assented to the plan

and so the present system of Homecoming at Alma was definitely worked out.

Homecoming, however, is not only a local event. Colleges all over the country practice some kind of Homecoming in the fall. These events are attended by students, Alumni, and other friends of the college. Entertainment is provided in the form of football games, banquets, dances and parties.

This year Alma expects her biggest Homecoming ever. The entire College is working out plans for the entertainment of the guests. May a great number turn out and take a definite part in the working out of a really successful Homecoming!

HOMECOMING SATURDAY (Continued from page 1)

The Senior class is sponsoring the Homecoming dance this year. Robert Campbell is general chairman of the affair. Assisting him are Richard Johnson and Claire Wilson, decorations; William Boyd and Louis Meisel, faculty; and William Johnson, tickets. Alice Girvin has secured Fred Spatz's band from Bay City. Dancing begins at eight and continues to —! The party is either couple or stag. The admission is set at 25 cents a person.

WELCOME!

Saturday is Homecoming Day at Alma-on-the-Pine, and Zeta Sigma cordially invites all its former members and alumni back to the Campus.

A Stag Banquet will be held at the Wright House at 7:00 P. M. November 4. This will give you a chance to meet your new fraternity brothers and renew acquaintances with the old.

And there are other inviting events for the day—a good football game with Albion in the afternoon and the Senior dance at night in the Memorial Gymnasium. Zeta Sigma welcomes you and looks forward to your arrival.

Louis W. Meisel, President.

Phi Phi Alpha Fraternity wishes to extend its welcome to the Alumni and old students of Alma College. Alma's football team battles Albion, societies have their Stag Banquets and Sorority Dinners, the Drama Club offers a production, and the Seniors are giving a dance. It is our desire that these activities supply you with satisfaction on your return trip to your "Alma Mater".

Benjamin R. Leyrer,
President Phi Phi Alpha.

Renew old friendships and make new ones; relive those good old days when you walked the paths of knowledge here at Alma. There is sure to be someone who will be glad to see you when we gather to enjoy the fellowship of a stag banquet. So concentrate your efforts on a trip to Alma when November 4 arrives.

Paul E. Ditto, President,
Beta Tau Epsilon.

Alpha Theta, the oldest literary society on the Campus, extends a cordial welcome to her Homecoming alumnae. At the present time the society boasts of twenty-three members who are active in the social, scholastic, and extra curricular programs of the college. The annual Alpha Theta Homecoming Banquet will be held Saturday evening at Wright Hall. It is hoped that many new acquaintances will be made and old friendships renewed.

Helen Louise Vincent, President.

Welcome Alumnae! Philomathecan extends to you a most cordial greeting. Many of you hold varied memories of your Alma Mater. Here you will meet many of your old classmates and acquaintances and we hope you will have as good a time among us as we will have entertaining you.

Florence McCallum, President.

Kappa Iota extends an invitation to all of her Alumnae to return for Homecoming this week. She asks you to come back and relive for one brief week-end the days when you were "under-grads" at Alma-on-the-Pine. The annual Homecoming banquet will be held in Wright Hall Saturday evening. There will be an Alumnae Breakfast in the sorority room at ten o'clock Sunday morning.

Annabelle DeKraker,
President.

Hello Mama! Hello Papa! We open our arms to you; we want you to come back to Alma-on-the-Pine; we want especially to have you masticate our delightful roast biffs and lunch sticks. Come back and meet our new pledge, Arthur Euripides Weimer, who will be toastmaster, guest of honor and chief responder. GAMMA DELTA IOTA WELCOMES YOU!

Ward Roderick Campbell,
President.

— WELCOME —
**WRIGHT HOUSE
BARBER SHOP**
Quick Service at
All Times

Investigate the New
HEATERLESS
Permanent Wave

See IONE

Palace Beauty Shoppe
409 Woodworth Phone 40

Investigate our
Lay-Away Plan
for
**CHRISTMAS
PORTRAITS**
**COVERT'S
STUDIO**

COMPARATIVE SCORES

ALMA-ALBION GAMES

1900	Alma 12	Albion 12
	Alma 23	Albion 0
1901	Alma 0	Albion 5
1902	Alma 12	Albion 0
	Alma 6	Albion 18
1903	Alma 6	Albion 16
	Alma 17	Albion 5
1904	Alma 27	Albion 27
1905	Alma 6	Albion 0
1906	Alma 1	Albion 0
1906*	Alma 1	Albion 0
1907	Alma	Albion
1911	Alma 0	Albion 9
1912	Alma 19	Albion 7
1913	Alma 33	Albion 0
1914	Alma 0	Albion 21
1915	Alma 7	Albion 7
1916	Alma 10	Albion 20
1917	Alma 7	Albion 0
1919	Alma 0	Albion 55
1920	Alma 0	Albion 48
1921	Alma 0	Albion 44
1922	Alma 0	Albion 6
1923	Alma 6	Albion 0
1924	Alma 0	Albion 3
1925	Alma 0	Albion 12
1926	Alma 12	Albion 6
1927	Alma 7	Albion 0
1928	Alma 6	Albion 9
1929	Alma 12	Albion 0
1930	Alma 27	Albion 12
1931	Alma 2	Albion 13
1932	Alma 0	Albion 19

* Forfeit.

TAU SIGMA GAMMAS

Students at the University of Wisconsin are not compelled to observe rules concerning open hours. Mrs. Theodore Schreiber told members and guests of Tau Sigma Gamma Wednesday night. Mrs. Schreiber, comparing customs at Wisconsin with those of the University of Wichita, stated that there are no set rules for returning to dormitories there, in contrast with strict rules at Wichita, where doors are closed at 9:30 P. M. She further compared the two schools as to size, location, and general curriculum.

Elizabeth Willits gave a clever reading, "The City Flat", Louise Hagaman played two saxophone solos, Mae Nelson rendered a piano solo, with Betty Tenney in charge of the program. The president, Virginia Hill, explained to all the new girls, who were guests, the origin of the Travel Study Group, its aims and plans. Roll calls pertained to explorers and explorations. Tea and wafers were served.

ORVILLE CHURCH

JEWELER and ART SHOP
Expert Watch Repairing

G. V. WRIGHT

**PICTURE
FRAMING**
319 Woodworth

Look Right for Homecoming

STAR CLEANERS and DYERS

One hour service on pressing

See KELLY

COMPLIMENTS

of

MICHIGAN CAMERA CLUB

315 State St.

"Big Bad Wolf"

is Coming Home to advise you to

Shop at PENNEY'S

SPORT JACKETS to keep warm at games \$4.98

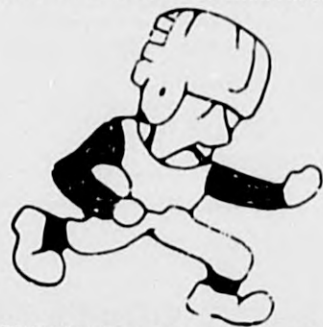
WARM FOOTWEAR to warm your toes 98c

Imperial Beauty Shoppe
Shampoo and Fingerwave 75c
Fingerwave 35c
Marcel 35c
Frances Brink
312 E. Superior—Phone 207

For Delicious Home Cooked Meals
Try
OHIO CAFE
formerly Perk's Inn

HALLOWE'EN
Special Ice Creams and Desserts
BURGESS DRUGS

GEM THEATRE
ST. LOUIS, MICH.
Admission 10c to All
ALL TALKING PICTURES
You may have seen the picture, but you must come here for the Best Sound.
Tues., Wed., Thurs.,
Oct. 31, Nov. 1-2
Double Feature
Kay Francis, George Brent in
"The Keyhole"
and
Carole Lombard, Lyle Talbot
in
"No More Orchids"
Friday Saturday, Nov. 3-4
Tim McCoy in
"The End of the Trail"
Also Serial,
"The Whispering Shadow"
Sunday, Monday, Nov. 5-6
James Cagney in
"The Picture Snatcher"



SPORTS



SCOTS LOSE TO YPSILANTI, 19-6

**Campbellmen Put up Plucky
Fight in Face of Heavier
Huron Line-up.**

Greater weight and greater reserve power were the deciding factors in the Michigan Normal victory over Alma last Saturday, 19 to 6. The Hurons were more than surprised at the wonderful defense and offense that the Scots exhibited. Many Normal plays were stopped far behind the scrimmage line and far more often than expected did an Alma man break into the open for a long run. Stan Bussard, playing with a bruised hip, broke through time and again, while Clack, W. Block, and Fuller did something much to the Teachers' discomfort. Ypsi's sixteen first downs may seem numerous in print but they were well earned. The Alma defense was hard to

crack and only the physical advantage of the home team brought success to their side.

Normal missed a fine chance to score in the first period when Henneman dropped a fifty yard pass from Dirkse when there was no one between him and the goal. They could not be denied in the beginning of the second period, however, when, realizing that they were in for a good afternoon's workout, they took the ball on Alma's 49 yard line and by sheer power, crashed their way to a touchdown. Parker made the counter on a run through center from the 7 yard line. Henneman failed to make the extra point.

Alma's only scoring chance in the first half was Riley Block's 30 yard run on a beautiful quarterback sneak. For a time it looked as though he was away to a touchdown. Alma made two drives toward the Ypsilanti goal both ending around the Ypsi 30 yard line.

In the third period, Michigan Normal took the ball on their own 37 yard line and marched to a touchdown with a varied attack that included power plays and fast passes. Al Giance, who had been tackling viciously all afternoon was hurt when he hit Dirkse on a head-on tackle and Bushnell replaced him. Henneman's try for extra point was blocked by Gordy Clack.

Alma's touchdown in the final period was very spectacular. Alma took the ball away from the Teachers by outfighting them. Fuller hit White Normal quarterback, so hard that the latter fumbled and Clack recovered for Alma. On the first play Huey Block cut over his own left tackle for nine yards. Bushnell made it a first down before being thrown out of bounds. Riley failed to gain on a lateral pass and Bushnell could do no better on an off tackle slant. With third down and more than 9 yards to go from the Ypsilanti 48 yard line, Riley faded back and heaved a bullet pass to Wadge who caught the ball on the Normal 25 and ran 25 yards for the Alma score. Bill Bushnell is also responsible for the touchdown for the afternoon's best blocking in clearing the way for Wadge. On the try for the extra point Riley fumbled the pass from center and threw to Dawson only to see Bud stopped before reaching the line of scrimmage. Ypsi's third touchdown, like the others, can be attributed to their greater strength. Taking the ball on the Alma 30 yard line they pounded their way to the Alma 3 from whence Welever took it over on a short plunge. Welever kicked the extra point.

With the game nearly over, Alma received the kick-off and immediately took to the air. On the last play of the game Riley Block dropped back to pass. Finding no one open he started to run. He was boxed in, however, and threw a pass to Dawson from the Alma 37 yard line. Bud took the ball at midfield and outran all of the Ypsi backs except Welever who drove him out of bounds on the Normal 10 yard line as the gun sounded ending the game.

Score, Michigan Normal 19, Alma 6.

The line-ups:
Mich. Normal
Hannemann . LE W. Block
Earle LT Fairchild
Bowman (c) . LG Bacon
Jarosch C Johnson
Ecklund RG Vitek
Rovinski RT Fuller
Cravec RE Clack
Rock QB L. Block
Ostlund LH . . (c) Dawson
Dirkse RH Erickson
Parker FB Giance
Alma 0 0 0 6-6
Ypsi 0 6 6 7-19

First downs: Normal 16, Alma 7.
Substitutions: Alma—Hubbard, Estes, Bussard, Bushnell; Normal—Arnold, Ealexander, Elder, Eccelstone, Hanes, Meiselman, Piotrowski, Welever, White, Benedict, Unger, LeBlond.

**DRAMA CLUB, A. C. CHOIR
HELP TOWNSPEOPLE**
(Continued from page 1)

Prof. Arthur Weimer. The program will be in charge of Professor Hamilton who will act as master of ceremonies.

Arrangements for this meeting were made by McConnell Oakley working in connection with Professor Hamilton.

This afternoon the A Cappella Choir of about sixty voices opened the season with a half dozen selections in honor of the State Grange. The Choir, under the direction of Prof. J. W. Ewer, sang the following numbers:

Adoramus Te—Palestrina
Czechoslovakian Dance Song—Arr. by Pearsal
Go Down Moses—Noble Cain
Charm Me Asleep—J. Brahms
Alma Mater—Hamilton

BRITON DEFENSE HAS 9 VETERANS

**Alma and Albion Expected to
Stage Hard Game to Keep
from Cellar Position.**

Alma and Albion, two teams who used to battle for first place in the M. I. A. A., will battle it out this Saturday for the last place in the M. I. A. A. on Bahike Field.

Albion is given a slight advantage in view of the tie with Hope, although neither Alma nor Albion has won an Association game. However, Alma has shown a better offense, and Albion's defensive playing did not excel against Kalamazoo two weeks ago. Alma also played better ball against Hillsdale than Albion did, and it looks as though Hillsdale was slated for another M. I. A. A. title.

Albion has a veteran although not as potential as the team the Britons brought up last year. Teddie Watts and Marvin Schroeder were two plenty tough thorns in the hides of the Scots last year. Jack Nelson is the only one left in the backfield of last year and two years back. Nelson will be remembered for his run back of a kick-off two years ago when the Scots led by Carl Gussin outscored the Britons, 27 to 12.

Another interesting side-light is that Jim Tuma, Alma College ex '35, has been subbing for Don Green, the Briton right end this year and will undoubtedly see service in the Alma game. Although slight of build, Jim makes up for it in fight and he won't be licked until the final whistle.

If Alma wins, the Scots will have an excellent chance to go up to third place, thus getting away from another disastrous season.

The probable line-ups for the game this Saturday are as follows:

Albion (Britons) Alma (Scots)
Richardson . . LE W. Block
Oldham LT Fairchild
Garlick LG Bacon
Hogan C Bussard
Howard RG Vitek
Ferguson RT Fuller
Green RE Clack
Nelson QB L. Block
Brown LH Dawson
Allman RH Bushnell
Tomlinson FB Giance

Substitutes: Albion—Tuma, Matthews, Shephard, Pastor; Alma—Erickson, Johnson, Estes, Hubbard, Volk, Baumblatt.

F. C. MAPES Insurance

Alma State Sav. Bank Bldg.
Phone 281

**The City News Stand
for
Magazines & Newspapers**
122 1/2 E. Superior Phone 383

ALMA LAUNDRY

For Complete Laundry
Service
PHONE 460

**COMPLIMENTS
of
Winget's
CASH MARKET**
122 Superior St.
ALMA



For All Occasions

Alma's Telegraph Florists

Six Societies Make Banquet Arrangements

Three fraternity and three sorority banquets will take place this Saturday night.

Eldon Aitken is in charge of the Zeta Sigma banquet which will be in the main dining room of the Wright Hotel at seven o'clock. He is assisted by Emery Kendall and Bruce York.

Phi Phi Alpha has selected William Johnson as toastmaster and William Boyd as social chairman. This will take place at the Wright Hotel also. Further arrangements of the program are under way this week.

Beta Tau Epsilon will have its annual Homecoming banquet on Saturday, although no definite arrangements had been made at the time this went to press.

Many alumni are expected to be present at all of these fraternity and sorority affairs.

The sorority dinners are all to be given in the Wright Hall dining room.

Alpha Theta's Homecoming Banquet, one of the society's most important annual events, is in charge of: Marjorie Morrison, chairman; Helen Walker, invitations; Evelyn MacCurdy, program; and Aileen Waters and Florence Schwartz, dinner.

Elizabeth Ann Malcolm has complete charge of the Philomathean banquet. No definite arrangements have been made, however, as we go to press.

A "tree" has been chosen as the theme of the Kappa Iota banquet, of which Marion Day is in charge, assisted by Josephine Wilkinson. There are four short talks representing all parts of the "tree", then the group will adjourn to the reception room for the society song.

BEAT ALBION

THIS ISSUE

This issue of The Almanian was edited by Bud Campbell, with the Staff assisting. The special Homecoming articles are the work of Marion Day and Earle Tomes, with credit to Prof. Weimer for the editorial welcome. The editor wishes to thank Bud and the Staff for their timely assistance and cooperation.

M. I. A. A. STANDINGS

W	L	T	Pct.	Pts.	Pts.
					For Opp.
Hillsdale	2	0	0	1,000	45 6
Kalamazoo	1	0	1	.750	20 6
Hope	1	0	2	.667	19 12
Albion	0	2	1	.167	6 52
Alma	0	2	0	.000	18 32

BEAT ALBION

**A NO. 1
BARBER SHOP**
Lyle Beeson, Owner

Compliments of

Hotel Wright

ALMA



FALL STYLES

are here in FREEMAN and NUNN-BUSH shoes.

—Brown or black in grain or calfskin leathers.

—Wing tips are in vogue.

\$3.50 \$5.00 \$6.50

G. J. MAIER
Clothes for DAD and LAD

**I Say Scotty!
Are all your kilties clean?**

ALMA CITY DRY CLEANERS

McCONNELL OAKLEY

"SHOP MARTIN'S"!

**"Right Now" is the time for that new suit and
Topcoat or O'coat. Prices are still low.**

Hats \$1.95 up

Furnishings

Shoes

BEAT ALBION!

We'll be there Rooting for You!

CAPLE FLOWER SHOP

See "Don" for Flowers

Phone 20 and 22

NILES & SON

Groceries
Meats

**THE
ALMA RECORD
PRINTERS
OF
THE ALMANIAN**

See us for your
PRINTING

STRAND THEATRE
The HOME OF PERFECT SOUND
—Where the Big Ones Play . . .
Sunday prices reduced to 10-15c

Tues.-Wed., Oct. 30-31, Nov 1
MAE WEST and CARY GRANT in
"I'm No Angel"

Also BUSTER CRABBE in "TARZAN THE FEARLESS." News—
Wednesday Matinee 10-15c. Nights
10-25c

Thursday and Friday, November 2-3
EDWARD G. ROBINSON and
KAY FRANCIS in
"I Loved A Woman"

News-Brevity-Cartoon 10-15c

Saturday, November 4
PEGGY SHANNON and LOIS
WILSON in
"DELUGE"

Special Stage Show
at 4, 7:40 and 9:45

News-Brevity-Cartoon 10-15c

Sunday and Monday, November 5-6
LEE TRACY and MAE CLARK in
"Turn Back the Clock"

News, Cartoon, Technicolor Musical
Comedy. 10-15c

— ALMA THEATRE —
Evening Shows Only—Friday, Saturday and Sunday. New Low Prices
ALL SEATS 10 CENTS

Friday and Saturday, Nov. 3-4
HOOT GIBSON in
"The Dude Bandit"

News—"Whispering Shadow"
10c Serial—Comedy 10c

Sunday, Nov. 5
STUART ERWIN,
DOROTHY WILSON in
"Before Dawn"
News-Brevity-Cartoon 10c

MODEL BAKERY
 — A Good Bakery in a Good Town —
 We can fill your pastry orders—Give us a trial.
 Phone 3

Faithful to Our Trust for 52 Years
FIRST STATE BANK of ALMA, MICH.
 Let Us Serve You

MIKE FORTINO
 Wholesale and Retail Dealer in All Kinds of Fruit
 PHONE 202

NILES CHEVROLET SALES
 224-26 Gratiot Ave. Phone 97
 Real Service and Dependable Cars

ROGER'S GROCERY
 HOME BAKED GOODS
 130 W. Superior Phone 173

Try Our Tire Repair and Battery Service
 Firestone Tires—Willard Batteries
TOMLIN-RIGGLE MOTOR SALES
 Phone 303

CRANDELL & SON
 AMBULANCE SERVICE
 FURNITURE—RUGS—LINOLEUMS

SHOE-N-HAT SHOP
 SHOE REPAIRING
 HAT CLEANING
 Featuring Cemented Soles
 All Work Guaranteed
 James Soufoulis, Prop.

Compliments of
MICHIGAN FEDERATED UTILITIES
 408 N. State Street
 Phone 292

Welcome Alumni
 Remember
SIMI'S RESTAURANT
 when you are back.
 ●
 Meals — Chili — Toasted Sandwiches

COMPLIMENTS OF
CONSUMERS POWER CO.
 EVERYTHING ELECTRICAL

K. I.'s Sponsor Last Open Rushing Feature

A study of cathedrals was made by Kappa Iota Literary Society at its open meeting last night. A piano solo "Ave Maria" was played by Florence Pierson and Jane Rice gave a paper on "Cathedrals in General". Prior to this, roll call had consisted of a few facts about individual churches.

Baby mums in purple and gold flower pots which were filled with ice cream, covered with grated chocolate, purple bread sandwiches with a gold cream cheese K. I., tea and wafers completed the refreshments.

All the new girls on the campus, the patronesses, Mrs. J. W. Ewer, Mrs. R. R. Campbell, and Mrs. E. J. Loddell, Mrs. H. M. Crooks, Dean Florence Steward, Miss Marjorie Gesner, Miss Margaret Foley, Miss Leila Hauser, Mrs. Fred Soper, Mrs. D. McCuaig and the town K. I. girls' mothers were guests.

Miss Josephine Banta, an honorary K. I., poured, initiating the silver tea service which she gave to the sorority this fall.

SONS AND DAUGHTERS SEEK NEW PATHS
 (Continued from page 1)

son of Dean Mitchell; Margaret Randels, daughter of Dr. George Randels and Mrs. Randels; Louise Hurst, daughter of Bertha and Frank Hurst; John Fraker, son of Marion Rounsifer and Foster Fraker, Bud Campbell, son of Argyle, and Marge Spendlove, daughter of Carol Whitney Spendlove.

And in other cases it runs back as far as big brother or sister:

Bill Boyd's sister Kay is an alumna; so is Bud Campbell's "Sis", Dick Johnson's Mary, Bob Lehner's Katherine, Cyril Lewis' Cora, and Fred Soper's Mary Elizabeth, to say nothing of the Blocks' Maryemma, and Kenny Ling's Ernestine. Louis Crampton's sister was Margaret Louise, and his brother-in-law, Charlie Murray, is a graduate. Bob Davies' sister Dorothy was here last year, and Ben Leyrer's sister Lillian graduated in 1931. Eddie Goggin's brother Bill and sister Elizabeth were here last year, too.

Fred Delevan's brother John is a graduate, and Mack Crooks is the youngest of four, his brothers being Lee, Elliott, and Harry Means. Betty Chapin's twin brother was a freshman here, and Rae Cottrell's brother-in-law, Gil Davis, is an alumnus. Ruth Dickinson's brother Dale is an Alma man, as is Fern Erickson's brother "Red", Jean Fowler's brother MacDonald, Mabel Kennett's brother Vernon, Marian Laman's brother John (her sister Ellen is a graduate). The two MacCurdys, Evelyn and Helen are sisters of former students, Marjorie, Winston and Bill, and Ellwyn MacGregor's brothers, Kent and Delbert, are Alma men. George Mitchell's brothers, John and Ross saw four years here, and Lorraine Sprague's brother is Earl Sprague. Bill Hood's brother Alvin expects to be back next fall; Helen Walker's sister Jerry, Lois Jo Watkins' sister Helen Grimm Mingus, and Josephine Wilkinson's brother Don were former students. Margaret Randels' brothers, Bill and Bob, are alumni, and Emily Phillips is a sister-in-law to Marion Grover Phillips. Relations are more complicated with the Reyhers, Myron being a nephew of Elizabeth. Gordon Smith's brother and sister, Tharon and Mary were here last year, and John Boyd's brother is Paul, who graduated. Edward DuLong is a brother of Hazel, Mrs. Hanson's brother Willard Bennett was here last year, and Louise Hurst's sisters Betty and Laura, and her brother John are all graduates.

If these have been drains on the family pocketbook in the past, other families are standing a double load now. The Block family has three sons in school now, and fifteen other families have two students apiece. And statistics would become too confused if the two married couples were listed. The Pine must truly be a more potent factor in the life of the institution than has been heretofore assumed.

DR. SCHREIBER TALKS ON GERMAN PROBLEMS
 (Continued from page 1)

general runs back even beyond the days of the Roman Empire. The Jewish citizen is still subject to his past history, and the German resents any stamping of the Semic pattern over the German culture. The average German today regards his Hebrew neighbor as something more than a religious opponent; he differs radically from political, economic, ethical, literary, and social standpoints.

Hitler's action meant the loss of political jobs, of which the Jews held the majority, but Dr. Schreiber pointed out that most of those deposed were either granted pensions or given three months' salary without service. Stories of atrocities have been exaggerated and facts glossed over by the world press in general, he stated.

Following the address, Dean Steward and the president of the International Relations Club, Claire Wilson, entertained Dr. and Mrs. Schreiber, Mrs. Harry Means Crooks, other Faculty members and students at a dinner in Wright Hall.

New Arrivals in the Gift Department—Hampers and Waste Baskets, Colored Wooden Novelties, Student Lamps, Coffee Tables, Book-Ends, Shoe and Hosiery Boxes, Tea Sets, Pottery.
SAWKINS MUSIC HOUSE
 "Everything 'in Music"

Check your watches for correct time by the new B-u-l-o-v-a Electric Clock at
ROWE'S JEWELRY & GIFT SHOPPE
 203 E. Superior Street

CENTRAL MICHIGAN FLORISTS
 Bonded Members F. T. D.
 322 Woodworth Ave. PHONE 58

COME IN, STUDENTS!
STATE RESTAURANT
 SANDWICHES
 SODA FOUNTAIN SERVICE

JACKET LIBRARY
 Now available at
 15c per volume
 All books complete and unabridged
THE VARSITY SHOP
 "JUST FOR SPORT"

Fine Shoe Rebuilding
 For Service and Quality
Mayer's Shoe Shop
 — NEXT TO VARSITY SHOP —

Wahl \$1.00 Pens Guaranteed.
 Parker Duofold Guaranteed for Life
 ●
WINSLOW BROS.' DRUG STORE
 College and School Supplies
 Pens Repaired

HOMECOMERS!
 Come to
Bradt's Restaurant
 MEALS - SHORT ORDERS
 HOME MADE PIES
 324 Woodworth Just off Superior

FILL 'ER UP
HI-SPEED
 GAS
 ● CENTRAL MICHIGAN OIL CO. ●

"Alma College"
STATIONERY
 at
PAT'S
 Circulating Library We Deliver