

# The Almanian

"Where Friendliness Links Learning to Living"

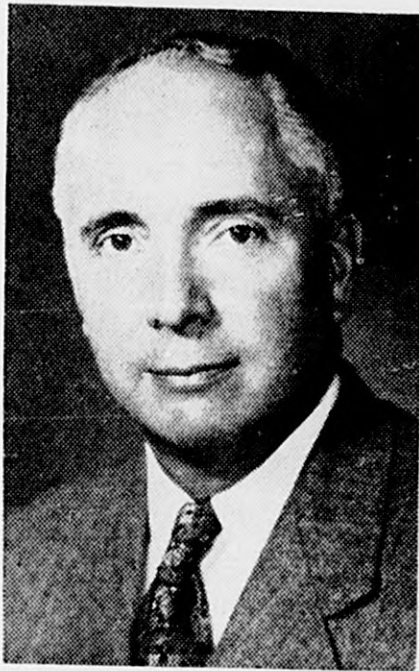
Vol. 41

ALMA, MICHIGAN, TUESDAY, SEPTEMBER 28, 1948

NUMBER 1

## Alma College Enters 62nd Year

### New Members of Alma College Staff



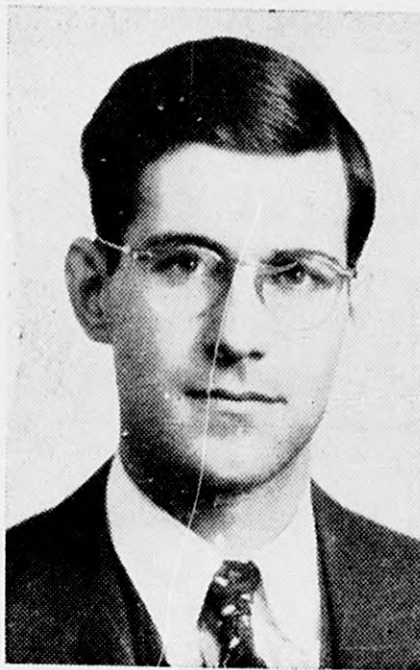
Dr. Joseph R. Harris  
Vice President



Mrs. Bruce Butler  
Home Economics



Rev. William J. McKeefery  
Religion Department



Klaus H. Schaeffer  
Philosophy and Psychology



Homer L. Paris  
Speech Department



Mrs. Robert E. Rufener  
Physical Education

### Oratorical Group Plans Schedule

The Speech Department of Alma College has made plans for one of the biggest years of participation that has ever been offered the students of Alma College.

The initial event of this year will be the Regional Tau Kappa Alpha Congress which will be held at Purdue University on October 14 and 15. Five members of the squad will take this trip. The Congress will discuss and legislate on Federal Aid to Education and Civil Liberties.

Alma College will participate in all the contests of the Michigan Intercollegiate Speech League which includes Albion, Alma, Calvin, Central Michigan, Hillsdale, Hope, Kalamazoo, Michigan State, Michigan State Normal, Western Michigan, Wayne and the University of Detroit. State contests in extempore speaking, discussion, debate, oratory, and interpretative reading will be held. Other activities will include participation in peace oratory and extempore speaking for men and women, Tau Kappa Alpha National Discussion Congress in April, and individual debates with other Michigan colleges.

The Elizabeth Bradley Oratorical contest for men and women will be held at Alma College in January. \$100 will be given in prize money to the men and women placing 1st, 2nd, and 3rd. The State Oratory Contest will be held at Alma on March 4.

(continued on page four)

### Meeting and Luncheon Planned for Monday

The Michigan Association of Church Related Colleges will meet on the Alma College Campus, Monday, October 4. This meeting will include all Presidents, Business Managers, and Deans of Men and Women of all the church related colleges of this state. The meeting will be held in the President's home and luncheon will be served to all the guests.

The purpose of this gathering is the mutual exchange of ideas for the betterment of all the colleges represented.

### Alumni News

MISS ETHEL CAREY, class of 1911, who is Dean of Women at Northern Michigan College of Education, at Marquette, Michigan, has been honored by having a new dormitory for 200 women named for her. The dormitory is now being occupied and will be dedicated in June when the school celebrates its 50th anniversary.

PAUL GUIDER, class of 1943, recently became engaged to Shirley Dean of St. Louis, Mo. They are to be married this fall.

At the annual meeting of the Board of National Missions of the Presbyterian Church in April, Dr. HERMAN N. MORSE was elected General Secretary, to take office in June, 1949. Dr. Morse is a graduate of Alma College, class of 1908.

On June 23, F. GUNTHER EYCK, class of 1948, was married to Lisa Baruch, in New York City.

### Religion Dept. to Weld All Groups

Despite an all day downpour of rain, twenty-one representative students and nine faculty members enjoyed a satisfying pre-school "retreat" in the club-house of Conservation Park on the afternoon and evening of Wednesday, Sept. 15.

General purpose of the meeting was to provide mutual understanding and spiritual undergirding for the campus religious program for the coming year. The specific purpose was to preview the Alma Christian Association, new plan for the over-all organization of voluntary religious activities of the college, which is to be launched this fall. The Religious Life Committee of the college, headed by Dr. J. V. Roth, Dean of Religion, has been at work on the new organization since last May.

Invitations to students attending the "retreat" were aimed at getting representation from most of the campus organizations and the several denominational groups on the Alma campus. Faculty attendants were also present on a representation basis. The aim was to keep the total number down to a figure that would be in line with "discussion group" size. Response from both students and faculty requested to attend was excellent.

The following were in attendance as representative students: Bill Blewett and Bette Adams for the Religious Life Committee; (continued on page three)

### Six New Members Appointed to Augment Record Faculty

With a program of Freshman Days, Alma College began its 62nd year on September 16 with an enrollment of 640 students, including 242 veterans and 239 new students.

President Dale D. Welch has announced the following new faculty appointments: Dr. Joseph R. Harris has been appointed Vice President in charge of Public Relations. Dr. Harris is a graduate of the college of Wooster, of Princeton Theological Seminary, and holds the earned degree of Doctor of Sacred Theology from Temple University.

The Reverend William J. McKeefery has been appointed Assistant Professor in the Department of Religion. Mr. McKeefery is a graduate of Union College

in Schenectady, New York, and did his seminary work at Princeton and Union Theological Seminary. After his graduation he served as chaplain in the United States Navy. Since his discharge, he has been doing graduate work in Religious Education.

Klaus H. Schaeffer will become Assistant Professor of Philosophy and Psychology. Mr. Schaeffer did his undergraduate work at Oberlin, has a Bachelor of Divinity Degree from Gettysburg Seminary, and a Master of Arts degrees in Philosophy from the University of Nebraska. Mr. Schaeffer comes to Alma from the college of William and Mary, Norfolk, Virginia.

The Speech Department has been augmented by the addition of Homer L. Paris. Mr. Paris is a graduate of the University of Denver and holds a Master of Arts degree from Michigan State College. Mr. Paris' special responsibility will be in the field of drama.

Mrs. Robert E. Rufener has been appointed Social Director and Instructor in Physical Education for Women. Mrs. Rufener holds a B. S. degree from Kirksville State Teachers College. She has taught at Melville high school, Skokie, Ill., and Kent University.

The Home Economics Department has been supplemented by the appointment of Mrs. Bruce Butler as Assistant Dietician and as Assistant in the Department of Home Economics. Mrs. Butler attended Alma for one year and then completed her work for a B. S. degree at Western Michigan College at Kalamazoo.

Roy W. Hamilton, who served for five years as President of the college, has returned, after a year's leave of absence, to head the English Department.

### Drama Club Stages Drive

#### New Members to Be Feted at Party

The Drama Club of Alma College is launching an all out effort this week to interest members of the student body in its activities and to obtain new members in order to support the extensive program of dramatic entertainment which has been planned for the coming year. The membership campaign will close with an open house party during which the new members will have an opportunity to become acquainted with the veteran troopers of last year.

During the 1947-48 term, the Drama Club presented three very popular plays—the famous "Arsenic and Old Lace", "Papa is All", and "The Black Flamingo", a mystery melodrama. The Club also sponsored a night of one-act plays directed by members of the play production class.

#### National Tie Considered

Upon recommendation of Mr. Homer Paris, a member of the National Dramatic Society, "National Collegiate Players", the members of the Drama Club will vote upon affiliating with this national organization. Mr. Paris is the new sponsor of the Alma College Drama Club.

#### Broad Program Planned

Arrangements are being made for the personnel of the Drama Club to attend a showing of Margaret Webster's "Hamlet" to be seen on the campus of Michigan State College on Nov. 8. In addition, other well-known productions which will play in Saginaw this winter will be attended by this group.

The Drama Club will also produce at least three three act plays during the year, according to officers of the group. These will be presented in the Alma High School Auditorium, and a public sale of tickets will be arranged as in the past.

### Chapel Programs List Schedule

Among the college activities which bring the large part of the college faculty together in frequent fellowship, the two regular religious chapel services each week stand out prominently. This year these services will regularly be on Mondays and Fridays at 11 a.m. On these occasions students and faculty members of the many denominations represented here meet for religious inspiration and expression.

The chapel services are under the general supervision of the Dean of Religion, Dr. J. V. Roth. He reports that the schedule from the opening of college to the Thanksgiving holiday is now largely completed, with numerous (continued on page two)

### Inmates Choose Pioneer Senate

The first formal meeting of the Freshman students quartered in Pioneer Hall was held at 9:30 p. m., Thursday, Sept. 23.

First act of the body was to elect the Pioneer Senate for the school year. The duties of the Senate, as in past years, will be to function as the official host for all social activities held in the dormitory. The Senate will also operate as the disciplinary body of Pioneer Hall with full responsibility for the general conduct of the students living there.

The elected members of the Senate are as follows: William Waldrop, President. Members: Jim Price, Latham Selke, John Anderson, Harry Jessop, Bill Blewett, Dave Davis, Keith Van Duzen, and Fred Quintar.

### Radio Club Meeting on

Tues., Sept. 28  
at 4 p. m. in room 302

Administration Bldg.



# The Almanian

Student Publication of Alma College

Entered as second-class matter Sept. 24, 1907, Act of 1879, Alma, Mich.  
Subscription price: \$1.50 per semester.

Published by the  
Almanian Publishing Co.  
614 W. Superior St., Alma, Mich.  
Weekly during the school year  
except vacation periods.



Member  
**Associated Collegiate Press**  
Distributor of  
**Collegiate Digest**

EDITOR-IN-CHIEF  
John M. Metheny

BUSINESS MANAGER  
Jerry J. Breen

SOCIETY EDITOR  
Mary Jane Keith

NEWS EDITOR  
Albert Kurrasch

CIRCULATION MANAGER  
Virginia Benson

FEATURE EDITOR  
Janice Bleil

SPORTS EDITOR  
Theodore B. Emery

COPY EDITOR  
Norma Pinkerton

PHOTOGRAPHY EDITOR  
Lyle Beversdorf

STAFF

Willett Schmidt, Circulation; Chalmers Juleff, Allan Wing, Maxine McLeod, News; Clarence Drilling, Bob Daily, Photography; Robert Dengler, Norman Thomas, Jean Kryger, Feature; J. Protheroe, Nancy Hitzell, Gloria Koch, Society; Robert Irwin, Nelson Johnson, Art; Milford Mason, Willard Štöveř, Sports; Geraldine Comstock, Galina Smyrnoff, Erina Smyrnoff, Rewrite; Marilyn Whetstine, Reporter.

## EDITORIALS

### GUEST EDITORIAL

Your editor has been kind enough to offer the editorial column of the Almanian to the President for his use in this first issue of the year.

There came to the President's desk recently the publication of Denison University, in which President Kenneth I. Brown, said to the students of his college what the President of Alma college felt it would be good for every college student to read. With adaptations to fit the situation at Alma the article is as follows:

### ARE YOU WORTH \$480?

A Word to our Alma Freshman

Not, do you have that money in your bank account, but are you a reasonable investment for that amount? Would kindly strangers, interested in you as a future American citizen, be justified in staking you for further training to the cost of \$480 over and above anything you or your parents might contribute?

That is the question which Alma College has been asking about every student applying for admission. That is a question which it would be well for the student-applicants themselves to ask.

Colleges are run on the thoroughly unbusiness-like basis of never asking the student to pay the full cost of his training. That is easily understandable in the case of those students of special ability whose parents are not able to afford college training for them and who, therefore, must apply for scholarship aid. But the principle also applies to the sons and daughters from families of means.

For example, at Alma the estimated educational cost per student for this year (1948-49) will be \$470; but the tuition fee for the year is \$350. Who pays the remainder? That is the investment which friends of Alma make in the student-members of Alma: \$120 for four years, or \$480.

Most of this money comes from current gifts from friends who believe that if Alma chooses her students wisely they are investing their money in America's future. Are you worth \$120 per year?

## :: Greek Gub ::

### PHI-LIP

Well, the old Phi Mansion has once again returned to life even though we find that we must struggle along with many of the old gang lost to the love-bug. How they ever get up the courage to stand in front of the preacher and say those fatal words is beyond me. There is much consolation in the fact that every one of them picked a fine wife, but WHERE ARE THE CIGARS, BROTHERS?

Bill Davis made it back with us, but just by the skin of his teeth. He stands on the brink, you know. Two of our old members have returned in a frantic quest for an education found only at Alma College. Welcome back, Buz and Rod.

It is amazing how rapidly some people can get back into the old stride. Meaning, of course, that some of the more handsome Phi's are already canvassing the field—and doing right well, we might add.

### DELT HOUSE

As always, the doors of the newly painted Delt House are open to all Freshmen and new men students.

We certainly were glad to return this September to find many needed repairs completed around the house. The outside has a gleaming coat of white paint, the vestibule has been entirely redecorated, and "Betsy", our old boiler, has been replaced by a brand new steam furnace (it's going to seem nice this January—studying without gloves).

The Deltas, like everyone else on campus, are sorry to find so many of the old friends gone, but we are sure that new friends will rapidly fill the vacancies left by the old gang.

We and the first Delt Scoop looking forward to our 10th Anniversary Homecoming and to Pledging this fall.

### KAPPA KEEKS

The K. I.'s are back again and ready to start another year at Alma.

We're glad to see so many girls returning and with such vim and vigor also. The first item on our agenda was a matter of housecleaning. We now have a clean and shining sorority room, of which we are mighty proud. We don't blame the girls who have peeked in for a look.

So ends the first Delt Scoop to the K. I.'s who were married this summer. Let's see, there was Phyl Hines, Phyl Smith, Lois Burrows, Reva Miller, Tillie Tobin and Mary Wiltse.

We'll also miss Marion Michael, Donna Jensen, and Monna Campbell, and, by the way, best wishes to Donna and Bill and Monna and Merle on their engagement. See you next issue

### SIGMA PHILO NEWS

After a summer filled with summer jobs and vacations, we are looking forward to an eventful year.

First thing on our docket is a good housecleaning spree in the sorority rooms. Then a business meeting to discuss our plans for the coming year.

Several of our college sisters were married this summer. We wish to take this opportunity to extend our best wishes to the newly weds: Mr. and Mrs. Charles Clay (Jan Cordes), Mr. and Mrs. Tom Williams (Katy Rawley), Mr. and Mrs. Charles Leiber (Marion Mattson), Mr. and Mrs. Robert L. Nixon (Joan Brett), and Mr. and Mrs. Don Ferriby (Sally Newell).

### ZETA SIGMA NEWS

1948-49. The 60th year of official existence for Zeta Sigma—

that is what this year means to us as we begin another school year. Appropriate plans for this year have not yet been completed at this early date, but will be announced later.

Reports seep out from the practice football field that several of our members will be important members of Coach Sebo's team this fall. They include Capt. Rex Roseman, Clare Albee, Bob Lieberman, Ken Conway, Ken Corbin, and Lee Procter. Best of luck fellows to go great in '48.

It is with sincere pleasure that we welcome to the campus all the new students and faculty members and may your stay in Alma be a pleasant one.

The familiar voice heard around these parts over the local radio station from 4:00 to 5:00 every day is Jerry Breen. Keep it up "gander" and lots of success in the field of radio. Congratulations also go out to J. E. Aldridge and the former Miss Helen Dickinson on their summer marriage.

This is all the news but we'll be seeing you.

## Chapel Program

(continued from page one)

guest speakers having been invited by President Dale Welch. The scheduled by dates is as follows: Sept. 24, Pres. Welch will conduct the service; Sept. 27, Dean J. V. Roth will have charge, making a general presentation of the "Alma Christian Association" which is to be launched this year as the overall campus organization for voluntary religious activities; Oct. 1, instead of a general meeting in the Chapel, meetings will be held by denominational groups, in places to be announced, for further presentation of the denominational phase of the Alma Christian association.

Oct. 4 the Rev. Dr. Henry Fischer, pastor of First Presbyterian Church, Saginaw, and a trustee of the college, will be guest speaker. On Oct. 8, Mr. S. S. Nisbet, a prominent Congregational layman and Michigan educator, who is a college trustee, will speak; October 11, Mr. William J. McKeefery, beginning this year with the college Religion Dept., will conduct the service; the October 15 service will be addressed by the Rev. Dr. Wendell Taylor, pastor of Covenant Presbyterian Church of Detroit.

The Rev. Dr. Fredrick A. Roblee, pastor of First Presbyterian Church of Bay City, will be guest speaker on Oct. 18. Dr. Roblee is the present moderator of the Presbyterian Synod of Michigan. Pres. Welch will have charge of the Oct. 22 service. October 25 is yet to be announced. On October 29, the Rev. Dr. L. E. Brubaker, pastor of the First Presbyterian Church at Harbor Springs, will conduct. By special arrangement with the Presbyterian Board of Foreign Missions, the Rev. Dr. Herrick B. Young of New York, Secretary of the Board's Dept. of Personnel, will address the chapel on Wednesday, Nov. 3, and the service will shift from Monday to Wednesday that week to suit Dr. Young's itinerary. Nov. 5 is to be announced. On Nov. 8, the Rev. Dr. O. Frank Storch, Jr., pastor of Calvary Presbyterian Church, Detroit, will be guest speaker, and on Nov. 12, the Rev. C. M. Muilenberg, pastor of Westminster Presbyterian Church of Lansing will address the meeting.

November 15 to 19 are the dates of this year's Spiritual Emphasis Week, with chapel services each day through those days. Guest leader this year will be the Rev. Dr. Frank H. Caldwell, President of Louisville Presbyterian Theological Seminary, who is a preacher of national reputation.

The Rev. Dr. John Gardner, a trustee of the college who is pastor of First Presbyterian Church of Midland, will speak at the chapel of Nov. 22, the last before the Thanksgiving vacation.

Chapel services are regularly brightened by the participation of the Alma College A Cappella Choir, which occasionally presents anthems as well as regularly having other parts in the services. Other special music is presented from time to time.

Later chapel services of the year will draw in a larger measure on student and faculty leadership for the services.

## Announcements

All students must bring their activity cards to college games in order to be admitted free of charge.

Mrs. Rufener, social director, requests that one representative from each fraternity, sorority, or other social group meet with her in Room 4, Arts Building, at 6:30 P.M., Tuesday, Sept. 28 to assist in drafting a social calendar.

All students wishing to go out for "cross country" are asked to report to Coach Sebo immediately.

The Registrar's Office calls notice to the regulation that no class may be entered after the first week of each term, and that, without the permission of the faculty, a students may not withdraw from any class after the third week without the penalty of failure.

Dr. Welch will address the Men's Club of the First Presbyterian Church of Alma Thursday evening at 6:30.

There is a general faculty rule that students are not permitted to operate cars while in attendance at Alma College except in cases of special need. Any student who is maintaining a car on the campus should apply at the Dean's Office for a permit. Everyone must re-apply even though they may have had a permit last year.

Within the next week, pews will be assigned in the chapel for all students.

## Alma vs. Ferris Friday Nite 8:00

PRINTING . . . .  
. . . . OF ALL KINDS

No job too large . . . .  
. . . . No job too small

The  
ALMA RECORD

WELCOME STUDENTS

GOOD LUCK AND HAPPY  
COLLEGE DAYS

COMPTON  
DRESS SHOP

ALMA DAIRY  
"SODA BAR"



GELLER'S  
JEWELRY



DIAMONDS WATCHES  
SILVERWARE GIFTS

119 E. SUPERIOR  
PHONE 190

Walk to your classes  
in style and comfort  
with shoes

FROM

INGERSOLL'S

Ingersoll Family  
Shoe Store



# Scots Smash Detroit Tech In Opener

## Penalties Heavy for Both Teams as Rough Play Prevails

The Scots blew the lid off the 1948 grid campaign in a meeting with the Detroit Tech squad in the Motor City on Saturday evening. Coach STEVE SEBO saw his men gain a decisive victory, 25-6.

In trouble almost immediately after the opening kickoff, the Scots were hard pressed in the early stages of the game. MERLE COSGROVE took the DIT kickoff on his own 16 yard line and returned it to the 31. A gain of one yard was netted on the first down, and then REX ROSEMAN gained 14 more on a pass-off play. The Scots were penalized here for off-sides.

On third down CHUCK SAXTON tossed a pass to ROSEMAN that was good for 12 yards, but the Scots here received their second penalty, backfield illegally in motion. Roseman tumbled the ball on the next down on an attempted pass and DIT took over on about the Detroit 23 yard line. In exactly six plays and with the ball game only four minutes old, the Tech men had scored, leading the Scots 6-0. BILL ALFRED, left-halfback made the score in an end-around play, but the conversion attempt was wide of the uprights.

Still highly nervous in their initial start, the Sebo-men took the kick, ROY GRAY returning it twelve yards. COSGROVE made 3, REX 4, and then a fumble by ROSEMAN cost the Scots 8 yards. On 4th down, a quick kick sent the ball to the DIT 40, where the Detroit lads fumbled it, and then made a recovery.

Setting up their own touch-down drive late in the first quarter, the Alma men got busy behind the fancy pass slinging of CHUCK SAXTON. Passing first to JOE THIBEDEAU, left end, 19½ yards were gained. The next down saw a pass to JOE CATARINO which netted ten more yards, and put the Scots on the DIT 4 yard line. CATARINO went around the right end for the score, the conversion attempt by KEN CORBIN being wide.

Alma took over the ball in the second quarter following a fumble by DIT, and again passing became the important factor in the victory march. CATARINO went around end for 2 yards, lost 6 on the next play, and then a beautiful pass from SAXTON to COSGROVE, good for a forty yard gain netted the second Scots score of the ball game. The half-time score stood at 12-6 with the local boys holding the advantage.

The second half was more or less a repeat of the first, with the ball changing hands many times. The Scots were able to pile up ten first downs throughout the game as against 8 for DIT.

JOE CATARINO intercepted a Tech pass on the Alma 40 yard line just as the third quarter ended. He returned the ball to the 50 yard marker before being stopped. Nine more downs saw the Scots score on a pass from CHUCK SAXTON to REX ROSE-

MAN, Rex catching the ball in the end zone. Conversion attempt was defeated when ROSEMAN attempted to run the ball through. A penalty against Tech gave Alma another try, and this time the kick by SAXTON was good, Alma taking a 19-6 lead.

Alma's final score came when ROSEMAN ran from the 28 to the 4 yard line, gained ½ yard more on the next play, and then JOE SLOTNICK, full back, made the final 3½ yards to paydirt. Conversion attempt by SAXTON was wide.

The evening's play wasn't any too brilliant for the Scots. The line was cold in the first quarter, with many openings apparent as the Tech men came through. Passers were continually rushed and as a result, much yardage lost. Fumbles also proved costly as over 30 yards were lost in this way.

The passing attack by the Scots proved to be the downfall of Tech. Chuck Saxton passed for a total of 113½ yards to be the big gun in the Alma onslaught. Ken Corbin was outstanding on the line, as was Clare Albee, George Nickel, Dick Derby, Fred Fyfe, Fred Hayes, and Bob Walcott. Wayne Clark, end, coming in late in the ball game continually smeared Tech passers. Ed "Boots" Jadvinskas, backing up the line, was in on every play.

Joe Catarino shared honors with Saxton in the backfield, snaring the Saxton passes for plenty of yardage and one touch-down. Fullback Roy Gray tore through the opposition many times refusing to be stopped. It took three men on all occasions to bring down the Pontiac lad when he had the ball under his arm.

Starting Lineup:

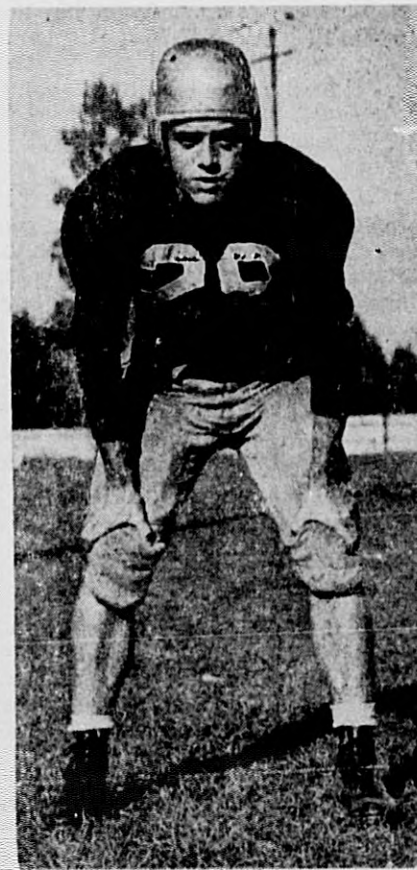
ALMA (25)	DIT (6)
Fred Fyfe ..... LE	Panzoff
Dick Derby ..... LT	Kortte
Ken Corbin ..... LG	Saraflan
Ed Jadvinskas ..... C	Masheff
Jim Nesbitt ..... RG	Grenkowski
George Nickel ..... RT	Dengel
Fred Hayes ..... RE	Booker
Rex Roseman ..... LHB	Alfred
Merle Cosgrove ..... RHB	Christiansen
Roy Gray ..... FB	Bino
Chuck Saxton ..... QB	Kazanjan
First downs ..... 10	8
Yds gained rushing net ..... 118½	71½
Forward passes attempted ..... 13	10
Forward passes completed ..... 10	3
Yards gained passes ..... 138	50
Forward passes intercepted by ..... 3	2
Yds runback or intercepted passes ..... 37	22
Punting Av. from scrimmage ..... 37	32
Total yds of all kicks returned ..... 77	75
Opponents fumbles recovered ..... 2	2
Yds lost by penalty ..... 70	100

## Alma vs. Ferris Friday Nite 8:00

## Score Two of Alma Touchdowns



Capt. Rex Roseman LHB—Grand Rapids



Merle Cosgrove RHB—Petosky

## Harriers Plan Full Schedule

Cross-country track prospects at Alma are the best ever as eleven men go through the practice paces daily in preparation for a ten-meet schedule.

Chuck Williams heads the squad, having one year of experience in MIAA competition. Last fall, Chuck placed 6th in the conference meet. His teammates include veterans Louis Marx, Rodney Grover (member of '46 team) and Chuck Watson.

Newcomers include Bob Mohre, winner of the mile and two mile in the interclass meet last spring, Jack Cowan, quarter miler on the Spring track squad, Jim Colter, miler and two miler, and Bruce Brown, half-miler. Freshmen members of the squad include Fred Quintar, an Argentine lad, Bill Stover, and Harry Brunet.

The Scots will race each time the Alma squad faces an MIAA opponent in football, also, a meet with Jackson Junior College, an odd one with Albion on the local course, two practice meets with Central Michigan, and the MIAA meet to be held here in November.

Coaching the X-country squad this year is Ted Emery. Schedule:

- Oct. 8—Hillsdale, here.
- Oct. 16—Albion, there.
- Oct. 23—Kalamazoo, here.
- Nov. 6—Adrian, there.
- Nov. 13—Hope, there.
- Nov. 20—MIAA, here.
- Dates undecided:
- Jackson JC, there.
- Central Mich, 1 here, 1 there.

## Religion

(continued from page one)

dents; Bob Zinn for Congregational students; Stan Hester and Gloria Anderson for Lutheran students; Virginia Bryan for Baptist students; Bob McComb and Mary Jane Keith for Presbyterian students; Eileen Probst and Chuck Martin for Methodist students; Arlan Edgar for the student council; Bob Christenson for the Phi Phi Alpha fraternity; Waite Palmer for the Delta Gamma Tau Fraternity; Clare Albee for the Zeta Sigma Fraternity; Joyce Fischer for the Sigma Phi sorority; Norma Pinkerton for the Kappa Iota Sorority; Kathy Shaw for the Alpha Theta Sorority; Jenette Faber for the Independent Women; Jim Price for Pioneer Hall men; and Tommy Washburne for Barracks men.

Representing the faculty were the following: Pres. Dale Welch, Vice-Pres. Joseph Harris, and Dean Paul Rice representing the Administration; Professors Robert Clack and Harlan McCall; Mr. William McKeefery representing the Religion Dept.; and

## Ferris No Easy Mark for Alma

As always, rough Ferris Institute eleven arrives on the Alma scene Friday night to tangle with the local squad in a non-conference tilt. Coach Steve Sebo will rely upon practically the same starting line-up which saw action in the DIT contest.

The Ferris gridders met Alma's neighboring school, Central Michigan last Tuesday and fell by a 28-7 score. Their line is big, but lacks the speed necessary for a smooth working outfit. However, Coach Steve Sebo is expecting no pushover, and his charges are being put through the same toughening paces that have characterized the training program to date.

Much work has to be done with the line. The "Michigan" system of offensive and defensive teams is used to some extent by the locals, but lack of capable replacements necessitates placing some men in the same positions throughout the game.

The Alma backfield is alive, and with the passing ability of Chuck Saxton, the running of Hester, Roseman Slotnick, Cosgrove, Catarino, Gray, Vaughn and Conway, the Scots should gallop to another victory. Last year these two squads were rated about even when they met in season finals for both teams, but the Scots eked out a 7-0 win which the Ferris eleven is hoping to avenge.

Only time will tell! Probable starting lineups:

Alma	Ferris
Fred Hayes LE	Skendrovic
Dick Derby LT	Gingrich
Ken Corbin LG	Brown
Ed Jadvinskas C	Kocher
George Nickel RT	Bowyer
Clare Albee RG	Donovan
Fred Fyfe RE	Wiseman
Chuck Saxton QB	Carney
Rex Roseman LH	Hansen
M. Cosgrove RH	Hildensperger
Roy Gray FB	Kleiman

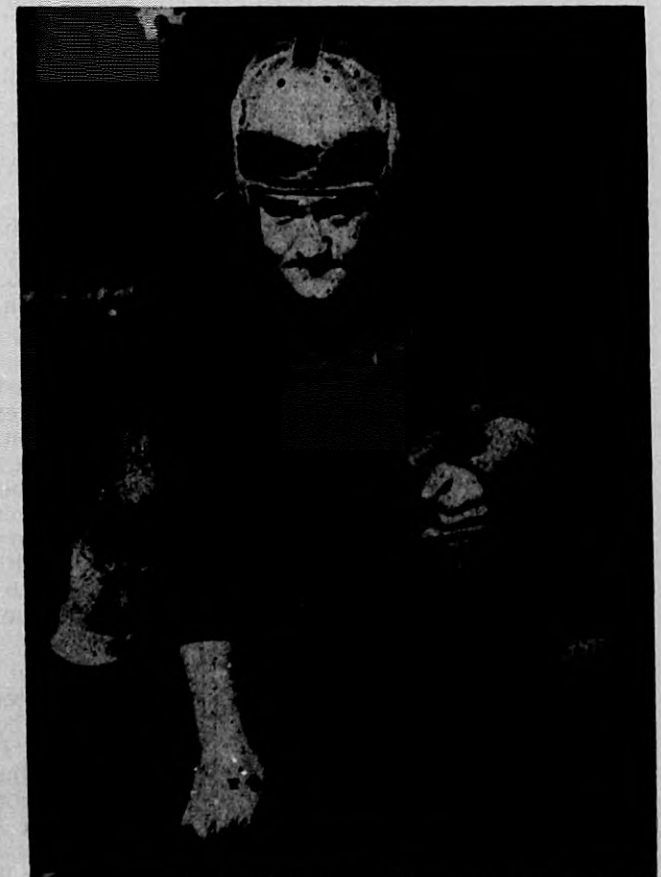
Scots	Records vs. Ferris:	Alma	Ferris
1900	41	0	
1902	12	0	
1904	48	0	
1904	29	0	
1905	39	0	
1906	0	0	
1906	4	0	
1907	17	5	
1910	55	0	
1911	15	5	
1914	33	0	
1919	48	0	
1923	76	0	
1928	7	13	
1946	13	14	
1947	7	0	
Total Points	444	37	

Miss Margaret Vander Hart, William Stielstra, and Dean J. V. Roth representing the Religious Life Committee.

## Rough and Tough



Roy Gray FB Pontiac



Ken Corbin LG Detroit

## Student Supply Headquarters

for over 20 years

- LAUNDRY CASES
- ZIPPER NOTEBOOKS
- DICTIONARIES
- ALMA STATIONERY
- ASH TRAYS
- MUGS

"DROP IN AND BROWSE AROUND"

## VARSITY SHOP

### MEN ONLY

- Lentheric Lather Shave Cream
- 50c Tube FOR A REAL SHAVE

### WOMEN ONLY

- HELENA Rubinstein Lipsticks
- 4-COLOR KEYS TO BEAUTY
- 4 LIPSTICKS-MIRROR only \$1.50

## DOUD'S DRUG STORE



# - - William Tell - -

I TRIED to write a column for the paper last year but old cue-ball, who runs this graveyard of grammatical errors, said I was too "tactless," and closed the iron door to me. Now, bless his barren top-side, he's given me another chance. Believe me, from here on I'm the soul of diplomacy (unless, of course, you TELL WILLIAM. I just can't keep a secret. Honest, boss!) Please drop your undercover dope in the Almanian copy box located next to the mailboxes. I want to know about every little breeze that ruffles the calm waters of our existence here on the campus. Will you help?



... FIVE CENTS will get you a cup of coffee in any hash joint in the city. Where do they get that seven cents for a mug of the poor man's opium over at the Union? I wonder how a good five cent bottle of coke would taste—piping hot w/ sugar and cream. This is a crisis and calls for drastic action!



RED CHRISTENSON brought back a classic from Detroit. A woman lay dying. Her husband kept the vigil at her bedside. Near the end, she drew him close and whispered, "George, will you do me a favor after I've gone?"

"Of course, sweetheart, anything."  
 "Will you ride with mother in the funeral procession?"  
 "What do you want to do, SPOIL MY WHOLE DAY?"



I think it's high time that someone leap to the defense of the Frosh. The sometimes brutal treatment they receive at the hands of their betters is certainly unjust and reflects to the discredit of the Sophomore class. For example, the other evening I watched a group of nine sophs completely surround forty-eight freshmen and subject them to some pretty forceful treatment. In self-defense, I recommend that the frosh organize into groups of twenty and go from class to class en masse. You never can tell when you're liable to meet up with a Sophomore lurking in the halls.



BIG AGITATION in the Home Ec. department for a special course in Chemistry to allow the home-makers a chance to get their required chem credits. Take two eggs and distill. Remove the leavings and add 4 litres NaCl. Place this mess in a covered receptacle and heat to 1800 C. Slip in the two eggs. What is the end result?—My breakfast this morning.



Members of the A Cappella Choir tell me that there is always a lot of good-natured banter kicking around at rehearsal. Elmer Coon, recently promoted to the Bass section, was complimented by the director on the depth and quality of his voice. The director then jokingly mentioned that singing in the Bass section had probably produced hair on Elmer's chest. Another member of the choir allowed as how he had more hair on his head than Elmer did on his chest! One guess as to his identity.

## Do You Feel Insecure and Apprehensive? Hi, Frosh

To the untrained eye of the casual observer, life at Wright Hall seems to be buzzing along in its long-established, well-ordered groove. To one more skilled in Wright-Hall-ogy, however, it is apparent that things are not what they seem. For example, while skulking around the door of one of the more out of the way wash-rooms just before the crack of bed-check one is apt to hear a hushed murmur of voices accompanied by an occasional groan. These wretched creatures are Freshmen who, at this time of year, through no fault of their own, command the attention of a certain sadistic group of upper-classmen.

Eavesdropping upon these clandestine meetings, one will hear endless tales of the horrors that to be perpetrated upon the heads of unfortunates. Those rumors of Toni Home Permanents disappear at the thought of a hair being dunked in a cold shower. The fashionable, short-haired styles are in a panic at the prospect of being forced to wear pigtails and no make-up. Most have fastened themselves to having a hair with a green ribbon, but have never been walked about all day in a hair-heeled and one low-heeled shoe. One Freshmen room on the second floor has already been disturbed, but the cadaver found in bed there turned out to be nothing but pillows, strategically placed. We have no authority to say that this was a premature Soph prank, but it looks suspicious! In the light of this, some speculation has arisen in regard to the recent epidemic of "I got 'em too". Could it be another stunt out of control?

These reports, plain to see, can shatter the mind of any healthy man, and even some of the girls

have begun to succumb to their effect. Misery and melancholia have moved into the dorm and will show no signs of leaving until the Day of Redemption" . . . . . HOMECOMING!!!

## Oratorical

(continued from page one)

The National Intercollegiate Debate question for 1948-49 resolved: That the Federal Government should adopt a policy of *fraternalism* toward the *unhappy* and *unfortunate* of *the world*. Those participating in this debate will evaluate their own theories of *fraternalism* to the *best of their ability*. Professor A. Maxwell Rowland, director of the speech department, announced that Alma College will be in the city with a week over *before the end of the year*. *Speeches* will be given at *the time of the debate* and will be *announced later*. In preparation for this *debate*, the *speech* department has *been soundly* equipped with *two sets of high fidelity microphones* have been purchased and *three organization* remote points have been established at the college: on the athletic field, in the chapel and in the speech room.

Forensic participants returning from last year include Bette Adams, Mason; Kathleen Shaw, Detroit; Peggy Powers, Flint; Donna Campbell, Sandusky; Bill Blewett, Detroit; Bill Baxter, Detroit; and Mary Jane Kieth, Detroit. In addition to these, many new students have indicated their interest in the various fields of forensics.

The annual meeting of the Michigan Intercollegiate Speech League will be held on Friday, October 1. Professor Rowland, treasurer of the league and state director of debate, and Mr. Paris, will represent Alma at this meeting. The organization of activities as well as listing specific dates for contests, will be the foremost item on the agenda.

## Frosh Dominate Almanian Staff



The Staff which will publish this year's Almanian and from which next year's Editor will be selected. Pictured above from left to right are: 1st row; Geraldine Comstock, Galina Smyrnoff, Nancy Hitzell, Erina Smyrnoff, Beverly Yoder and Jean Kryger. 2nd row, Joan Protheroe, Mary Jane Keith, Mrs. John McLead, Janice Bleil, Gloria Koch and Norma Pinkerton. 3rd row; Ted Emery, Allan Wing, Milford Mason, Chalmers Juleff, Robert Dengler, Robert Daily, John Metheany and Willard Stover. 4th row; Nelson Johnson, Pete Schmidt, Norman Thomas, Clarence Drilling and Richard, Irwin. Not pictured are Albert Kurrasch Marilyn Whetstone, Gene Macri, and V. Benson.

## College Cook Book Ready; Offers Many Choice Recipes

The Alma College Cook Book is now off the press and ready for distribution. It was compiled by the Women's Advisory Board of Alma College and contains over a thousand recipes covering everything in cookery from soup to suit.

The book is handsomely bound with a green and cream cover and is the size of the chapel on the campus. The recipes were collected from members of the college and former teachers and former members of the college and members of the advisory board. It was printed by the Alma Record.

Copies are now obtainable from any member of the Advisory Board at \$2.25 each. The Board consists of Mrs. C. P. Milham, Mrs. Roy Hamilton, Mrs. Crawford Daily, Mrs. L. R. Kamperman, Mrs. Rex Wilcox, and Mrs. Henry Soule of Alma and Mrs. Richard Waggoner of St. Louis.

men, that the faculty of the college have previously taken action against kidnapping and its attendant struggles and contests, as well as against corporal punishment or physical indignities. Such unorganized contests and physical encounters are becoming less and less a part of the life and traditions of American colleges. They have always been attended with danger to the individual involved and cannot be expected to make a contribution to the unity and best life of the institution.

**SIMMON'S QUALITY SHOE REPAIR**  
 SERVICE WHILE YOU WAIT  
 325 1/2 STATE ALMA

**L. P. SCHNEIDER & SON**  
 THE FLOOR COVERING STORE  
 130 W. SUPERIOR ALMA

Compliments of  
**CHUCK SAUNDERS**  
 QUALITY MEN'S WEAR AT PRICES YOU CAN AFFORD TO PAY  
 Come in and get acquainted  
 207 E. SUPERIOR ALMA

Welcome Back Upper Classmen and to the  
**Freshmen—How Do You Do?**  
**SAWKINS**  
 MUSIC AND FURNITURE  
*It's a Tradition*  
*The Meeting Place on Off Hours*

COMPLIMENTS OF  
 MODERN CLEANERS

**HOT ROASTED NUTS**  
 •  
 SEALEST ICE CREAM  
 •  
 Assorted Candies in Package and Bulk  
 •  
 Ice Cold Soft Drinks  
 •  
**THE NUT SHOP**  
 STUDENTS STOP IN AND GET ACQUAINTED