

# The Almanian

"Where Friendliness Learns to Live"  
ALMA, MICHIGAN, TUESDAY, FEBRUARY 28, 1950

NUMBER 14

## Religious Emphasis Week Commences Mar. 13

### State Women's Debate Tourney

Eileen Foster, Albert and Owen Lechere, Detroit, representing Alma College in the Annual Women's Debate Tournament of the Michigan Intercollegiate Speech League, were successful in going through the tournament in Wayne (2), Central Michigan (1), and Wayne (1).  
Virginia Benson, representing Alma College in the tournament, were successful in defeating Central Michigan College and Hope College while losing to Michigan State, Wayne, Saginaw and Ferris State. Detroit parties pulling in the same district on the negative side, defeated Michigan State, Wayne, Saginaw, Ferris State, and Michigan State.

### G. L. Cook Literary Awards Offered

These awards have been available in order to stimulate interest and excellence in literary writing. A total of \$1000 is being made available each year for the awards. G. L. Cook's hope that these awards will stimulate widespread interest in literary writing.

### Plans for Sacrificial Meal

In the Chapel Service on Friday, February 24, 235 students, out of about 400 who were in attendance, indicated that they would like to take part in the proposed plan of providing one sacrificial meal in the weight room each week during Lent. The survey that effort will be made for some further action. Many of those who did not respond to the survey did not do so because they were unable to participate through lack of time. The dining room voted to do so. Tentative plans for this program are as follows:

### Services to Be Led by Cruckshank and Snyder

Dr. Arthur Cruckshank, minister of the Second Presbyterian Church of Farmington, Conn. will be the guest speaker during Special Lenten Services with beginning March 13. Rev. Richard Snyder of the First Presbyterian Church of New Haven, Conn. will assist him.

Table with 2 columns: Name, Position. Includes names like Phyllis Hayward, Virginia Benson, etc.

### Pre-Med Info

All Pre-Meds who attend medical school in 51, it is strongly recommended that you take an aptitude test. An application for the test was sent on May 12, 1949. The test was held from Dr. Rice's office at this month.

### ACA Observes Lent

The Lenten season will be held on Ash Wednesday, March 15, which was observed by a special group in spite of the snow and cold weather. The group consisted of the following members: Phyllis Hayward, Virginia Benson, etc.

### Thoughts of a Reporter

The reporter who writes for the Almanian is a person who is often asked to write about the things that are going on in the school. He is a person who is often asked to write about the things that are going on in the school.

### State Oratory Contest

Alma College will be represented at the state oratory contest of the Michigan Intercollegiate Speech League to be held at Calvin College, Grand Rapids, on Friday, March 3. Competing students will come from Albion, Alma, Calvin, Central Michigan, Detroit Institute of Technology, Hillsdale, Hope, Kalamazoo, Michigan State, Michigan State Normal, University of Detroit, Wayne, and Western Michigan College at Ypsilanti.

### Musto Memos

The Musto Memos are a series of short stories written by Musto. They are a series of short stories written by Musto. They are a series of short stories written by Musto.

### ACA Observes Lent

The Lenten season will be held on Ash Wednesday, March 15, which was observed by a special group in spite of the snow and cold weather. The group consisted of the following members: Phyllis Hayward, Virginia Benson, etc.

### ACA Observes Lent

The Lenten season will be held on Ash Wednesday, March 15, which was observed by a special group in spite of the snow and cold weather. The group consisted of the following members: Phyllis Hayward, Virginia Benson, etc.

### ACA Observes Lent

The Lenten season will be held on Ash Wednesday, March 15, which was observed by a special group in spite of the snow and cold weather. The group consisted of the following members: Phyllis Hayward, Virginia Benson, etc.

### ACA Observes Lent

The Lenten season will be held on Ash Wednesday, March 15, which was observed by a special group in spite of the snow and cold weather. The group consisted of the following members: Phyllis Hayward, Virginia Benson, etc.

### ACA Observes Lent

The Lenten season will be held on Ash Wednesday, March 15, which was observed by a special group in spite of the snow and cold weather. The group consisted of the following members: Phyllis Hayward, Virginia Benson, etc.

### ACA Observes Lent

The Lenten season will be held on Ash Wednesday, March 15, which was observed by a special group in spite of the snow and cold weather. The group consisted of the following members: Phyllis Hayward, Virginia Benson, etc.

### ACA Observes Lent

The Lenten season will be held on Ash Wednesday, March 15, which was observed by a special group in spite of the snow and cold weather. The group consisted of the following members: Phyllis Hayward, Virginia Benson, etc.

### ACA Observes Lent

The Lenten season will be held on Ash Wednesday, March 15, which was observed by a special group in spite of the snow and cold weather. The group consisted of the following members: Phyllis Hayward, Virginia Benson, etc.

March 4 Union  
Theta Tavern  
Dance to Music of Marv Jenkins Combo  
40-60 cents  
8:00-11:45

# Otc Almanian

Student Publication of Alma College

Enters 11 (aund>claa matter Syst. 24, I'iot. Act- of 1S\*9. Alma. Mich.  
Subbcnptiun price: \$1.50 per semester.

Published by the Almanian Publishing Cc.  
614 W. Superior St.. Alma, Mich.

Weekly during the school year except vacation periods.

PAGE 2- THE ALMANIAN

TUESDAY. FEB. 28. 1960

## EDITORIAL STAFF

Editor in Chter  
Assisrcmf Editor  
Fecfure Editor  
News Editor  
Sports Editor  
Copy Editor  
Photographer  
Business Manager  
Assistant Business Manager  
Circulation Manager

Joan French  
Warren Ross  
Vicki Grunman  
Jack Tripp  
Ted Emery  
Gary French  
Ed Kinker  
Bill Falk  
Ron Black  
Joan Ramsey

Stair- Don Gordon, Shirlev Stewart, Pat Shaw Dave Cornell, Marj Mc-  
Connell, Don Sywassink Gordon Willoughby, Carole Rohlfe,  
Bill Farris, Ron Black, Marion Davison Dave Hollar, Mike  
Portlance Bob Scroggins, Marie Harper.

:: (Grwk (Sab

Kapoa Kapers

Our first rushing party is over, and we're all quite pleased with the way it turned out. Mrs. Betty Fowler's lovely home provided a pleasant setting, besides being a welcome change from the modern comforts of the dorm. Little velvet heart-shaped pincushions made by the KIs themselves were given as favors.

No sooner had we done away with the tea than we started the real work on the Kl-Phi dance held last Saturday. Guess by now you know that the "First Nighter" was a New Idea on Campus. We told you the music was not going to be on records. And did ton see all the celebri-

Now we're looking forward to our Wednesday night spread. "novel ideas" are brewing

semester. He says that if he can't do it with music he'll start bringing apples.

Willy Waldrop, since joining the "L & S" Club has been evading Audry to attend to other social obligations, The gate is nearing when Wally Wvss relinquishes his "King Of the Rat Race-crown. Since Wally's engagement, he feels that he can no longer uphold the reputation accompanying the title, r'n opt It Men'

Phi Lip

Well, here we are again, same old su"- ,same old reporter. «aven I had to °™ ch actmt> In the house lately, Mac has given Hip.hif T" ^ssons if seems. I hate to say' I told you so", but I congratulated Betty- and Willie ahnit thrpp wppkc ngn nml nww

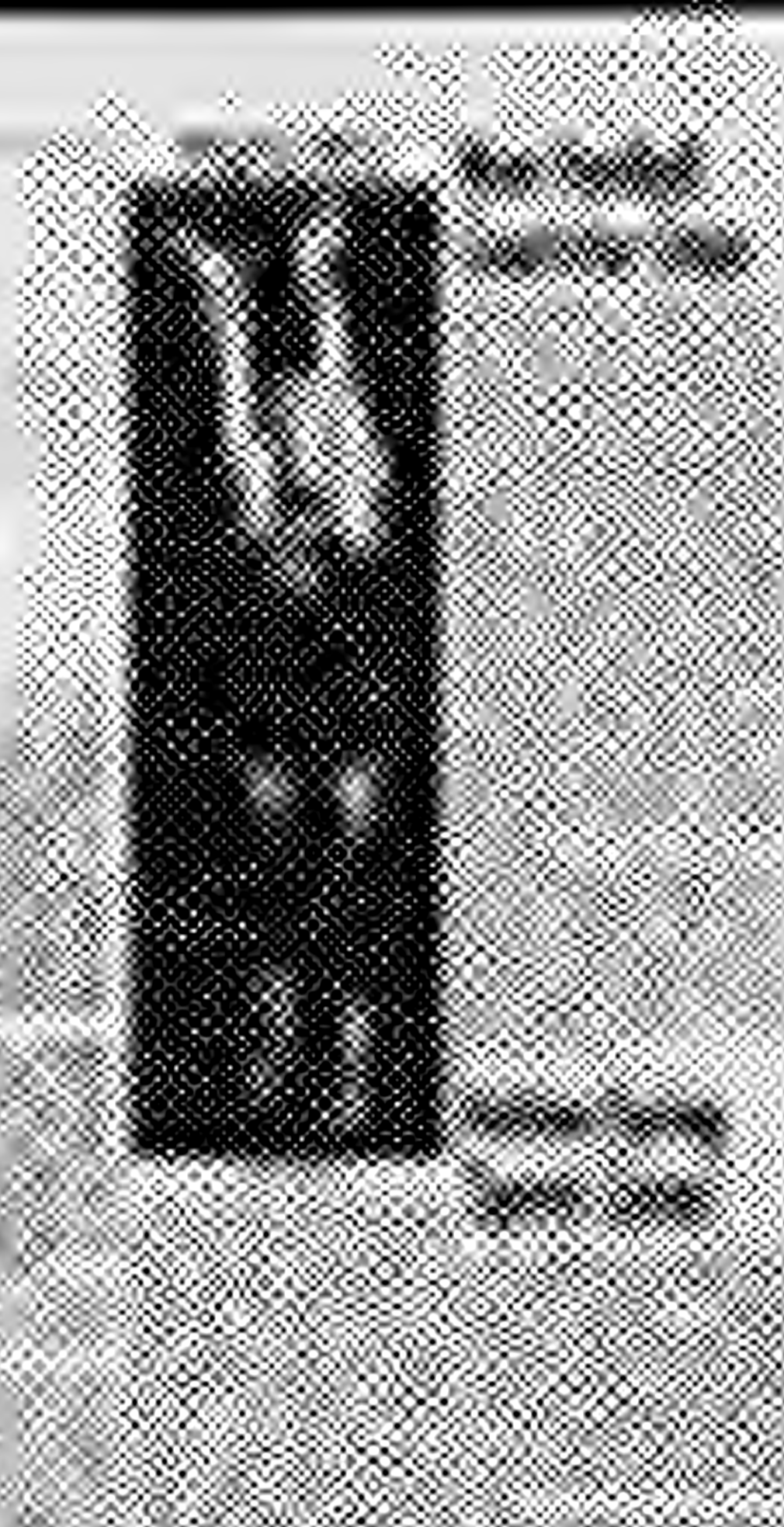
## Love\_\_

During the past week the radios and newspapers have been going all out to impress the feeling of brotherhood in the minds of the people. They shout this is National Brotherhood week, this week love your fellowman. this week do unto others as you would have them do unto you. Why only this week? A week is just seven days which fall into a certain sequence on the calendar. For only seven days we're to show loving kindness to the world, afterwards we can go on living our petty hates. We can continue our cold wars, as if they paused for this week, and back stab all we want. We don't need a brotherhood week, what this world needs is national brotherhood lifetimes.

I've often heard it said that it is never too late to do good, it is never too early either. Shall we start now or wait for race riots to bring us to our senses? I've known people who yell and rave against racial discrimination and yet

Scotti

Multi-Calendar  
1984-1985



1984

1985

1986

1987

1988



### Antique Antics

Kazoo Index Feb. 17, 1950

1899  
A Frenchman went to an American and said to him: "What does a polar bear do?" The American answered:—"What does a polar bear do?" "Why he sits on the ice." "Sits on zee ice?" "Yes," said the American, "there is nothing else to sit on." "Vell, vot he do, else?" "What else does he do? Why he eats fish." "Eats fish—sits on zee ice and eats fish. Then I do not accept." "You don't accept? What do you mean?" "Oh, non, non! I does not accept. I was invited to act as a polar bear to a funeral."

1900  
It was a Prep. who was accused of asking when the Anglo-Saxon race came off.

The soil is so fertile in Cuba that if you stick a pin in the ground it becomes a terrapin. It is even said that they raise umbrellas there during the rainy season.

Prof. (Looking at his watch) "As we have a few minutes, I should like to have anyone ask a question, if so disposed."

Student: "What time is it, please?"

If Germany produces germs, and Paris, parasites, what does Ireland produce? Mike-robos.

"I've a few more points to touch upon," said the tramp as he awkwardly climbed a barbed wire fence.

1901  
Bill Bye established his first newspaper office over a livery stable, in which was kept an old mule, and, as a matter of direction, tacked on the door the sign: "Twist the mule's tail and take the elevator."

### Pioneer Hall

What has happened to all the card games that used to go on in Pioneer Hall? All the boys studying instead of playing cards because they did not receive a one point for the first semester? Yes, they're studying more than ever. The way the professors are pouring on the work, there isn't time to relax like they were able to do the first semester.

Have you noticed the new faces of the male sex floating around the campus this semester? Pioneer has its share. There are sixteen new boys in the dorm this semester. Have you ever heard of the United Nations meetings they hold there? Whenever Tan Hoe from Malay, Ken from Iran, Kianfar who hails from Iran, Charles Nittis from Greece, and Luigi Piccolo from Italy get-together in the lounge with us, it's like a United Nations meeting. We chew the fat and talk about the different countries, and ask the foreign students their opinion of the United States and American women. Their conversations become very interesting sometimes.

One night along about ten, some brave girls from Wright Hall came over to serenade the boys in Pioneer. While they were singing their love songs, they received a cold reception. Ask Vicki Grunman how it was if she can remember it. Don't worry, girls, you may have your chance to get even with us some night.

### :: Scotty Barks ::

by Don Gordon

Hello!  
I hear from the boys with the branded posteriors that things were a little rough last week, what with square meals, and the securing of certain unmentionable articles. The girls were quite cooperative, however, and with their help and with the help of neighboring farmers, the boys manager to secure articles necessary for their frat initiation. Incidentally, one of the frats helped solve their worries about the coal strike. A burlap bag full of coal from each pledge will go a long way in "keeping the home fires burning."

What did you think of Dr. Rice's rendition of "The Little Red School House" last Friday? I'll bet you didn't know our Dean of Men was so talented. His musical introduction certainly was different, to say the least, and it really brought down the house with hearty applause. No foolin', Doc, it was really great!

At that same chapel service the topic of the sacrificial meal was

### W.S.S.F.

Student interest is mounting on the Alma campus concerning the forthcoming World Student Service Fund drive. At a recent assembly, Dr. Rice, Dean of Men, suggested that the sacrificial meal be adopted. Under this system, students who wished to tie their W.S.S.F. giving in with their observance of Lent would eat one meal a week that was identical in quality and quantity with an average meal eaten by a student abroad. The money saved would be turned in to the W.S.S.F. fund, and Alma students would also lead to a realization of the meager rations that make up a meal for foreign students.

The money saved by this process, though, will only be a start toward our goal of \$600. If the W.S.S.F. is to provide aid to tubercular students in Greece, establish rest camps for the war-scarred students of France and Germany, supply necessary aid to students and teachers packed into refugee camps in India, and carry on essential work in other regions of the world, the students of the United States must display a spirit of generosity. We here at Alma can do our part by meeting our quota, and then by giving just a little more.

### I.W.O.

Since everyone had such a bang-up time at our last skating party, we would like everyone to come to our next skating derby. This brawl on wheels will be held at Crystal and the transportation is provided free. Don't forget the date, Friday, March 3. Tickets may be purchased for 50 cents each from any I. W. O. member.

brought up. The comments on this subject have been varied, but the most persistent is: "Will we be able to tell the sacrificial meal from regular Wright Hall food?" That, my friends, remains to be seen.

Comment on the Kalamazoo game — why is it that two of K-zoo's best players wore striped shirts, instead of the traditional orange? ? ? ? ?

Bye now,  
Scotty.



"Here we allow foreign students to wear the costume of their choice — however, in your case, Miss Boom Boom, we feel —"

### The Saga of the Cold Commuters

By Pat Shaw

Did any of you fortunate people who live in Wright or Pioneer Hall ever give a thought to the small army of hardy souls who live off campus and must trudge to school in the wee hours of the morning? These poor individuals who must brave snow, sleet, rain, and wind to arrive at our hallowed halls of learning? Stand in the chow hall some cold winter morning and watch the effects of this lovely Alma winter weather. Shortly after 7:00 they start to arrive. If you are real observant you can distinguish the commuter from the non-commuter. Look for red ears and cheeks, a waving of arms and stamping of feet as an

attempt is made to restore circulation. Also watch for a mild chattering of teeth. If you listen real close it sounds like a chorus of the "Mexican Hat Dance". There will also be a murderous look directed at the person punching chow cards. The person who sits wrapped in a warm coat and complains that it's so cold in the chow hall, while the poor joker fumbles with fingers numbed to the elbows for his chow card. He will probably hesitate at the steam table too, trying to absorb heat that a mile walk in zero weather has banished. Of course there are always the lucky few who live beyond the one mile limit and drive to school. They come breezing in about two minutes to eight, sympathize with the thin-blooded ticket puncher, and blithely sit down for breakfast. As more of the walking class arrive, they pretend blindness when asked why they didn't stop and give a poor frozen guy a ride. There is always a steamed-up window or car trouble to keep them occupied as they go tearing by. All in All, it must be nice to live so close to school, even in Wright with the regulations and stuff.

### Bowling

The Chargers broke up dead-lock for first place in the Alma College Bowling League (AY) Thursday afternoon by sweeping three games from the Phi's, taking a total of four points. The Phi's dropped into a tie for second place with the Delt's, as the Delt's took three points from the Zeta's. Below are the league standings as of Thursday February 23rd.

Chargers	08	6
Phi's	14	13
Delt's	14	10
Cyri. Chew	11	13
Zeta's	9	15
Pioneer's	4	20

**ROSLUND GULF SERVICE**  
Your Car Is Always Vacuum Cleaned with Every Lubrication

**A-NO. 1 BARBER SHOP**  
209 1/2 E. Superior Alma

**Alma Laundry**  
414 Woodworth Alma

SHOP AT DOUD'S AND SAVE  
**DOUD DRUGS**

**SUPER HAMBURG**  
BREAKFAST DINNERS LUNCHES  
Open 24 hours, 7 days a week.

**L. P. SCHNEIDER and SON**  
"The Floor Covering Store"  
130 W. SUPERIOR ALMA

**ALMA STATE BANK**  
Member of the F. D. I. C.  
YOUR PATRONAGE APPRECIATED

Smart Men . . .  
Shop at . . .  
. . . the Alma  
**Martin Store**

**GELLER'S Jewelry**  
Diamonds—Watches—Silverware  
by Traub

**CHURCH'S WEST SIDE MARKET**  
Two Deliveries Daily  
Phone 60 205 W. Superior Alma

**SLOTNICK & CLARK**  
Agents for  
**Modern Cleaners**  
122 W. Superior Phone 194

FAITHFUL TO OUR TRUST  
SINCE 1880  
**FIRST STATE BANK**  
OF ALMA  
Old Safe Reliable  
Member of F. D. I. C.

STORE FOR WOMEN  
**Gittleman's**  
ALMA, MICHIGAN