



the *Almanian*

Volume 48

Friday, November 2, 1956

Number 419

Thirteen Alma College Students on New "Who's Who" Listings

Thirteen upperclass men and women at Alma College have been elected to "Who's Who in American Universities and Colleges." In balloting held last week among the College faculty and Student Council, seven women and six men were nominated for this honor and it was learned yesterday that all names had been accepted by the publication. Only those juniors with a 2.5 average and seniors with 2.25 are eligible for consideration. (A 2.0 is a straight B; 3.0 is a straight A.) In addition to academic excellence, it is expected that those selected exhibit qualities of leadership and that they are making a valuable contribution to the life of the College.

Of those named, eight are seniors and five are juniors.

Seniors:

Paula Bare, daughter of Mr. and Mrs. Ernest W. Bare, 811 Mill St., Midland, Michigan; Robert E. Fritz, son of Mr. and Mrs. Francis A. Fritz, Seeger St., Cass City, Michigan; Elenore Gieser, daughter of Mr. and Mrs. Elmer P. Gieser, 106 W. Euclid, Ishpeming, Michigan; Donald T. Jackson, son of Mr. and Mrs. Paul Jackson, 4250 Woodworth, Holt, Michigan; Mary Margaret Johnson, daughter of Rev. and Mrs. C. R. Johnson, 114 No. 3rd St., Harbor Beach, Michigan; Ward C. Patton, son of Mr. and Mrs. Ward Patton, 336 Moyer, Alma, Mich.; Charles T. Scholl, son of Mr. and Mrs. C. T. Scholl, 14824 White, Allen Park, Michigan; Jerry R. Schubel, son of Mr. and Mrs. Ted R. Schubel, Port Austin, Michigan.

Juniors:

Carol Blanck, daughter of Mr. and Mrs. C. Blanck, 624 Pine, Alma, Mich.; Mary Lou Heberlein,

daughter of Rev. and Mrs. Paul K. Heberlein, 25045 Burt, Centerline, Michigan; Janet Kaye Jackson, daughter of Mr. and Mrs. Leonard H. Potter, 1935 Hall, Holt, Mich.; Jean Molyneux, daughter of Mr. and Mrs. Max Molyneux, 740 N. State, Alma, Mich.; Harold G. Turner, son of Mr. and Mrs. Roy W. Turner, 2926 N. Sheridan, Akron, Michigan.

With all of the above mentioned students in "Who's Who," Alma College has a good representation in this publication. It is considered an honor to be represented in "Who's Who" both to the student and to the college to which they go. A word of well done to all.

Delta Gamma Tau Presents Gala Monte Carlo Saturday Night

A Carnival of Fun to Invade Alma Campus

The annual Monte Carlo by the Delta Gamma Tau Fraternity is to take place Saturday, November 3, 8:00 p.m. in Tyler Center. A night of fun and enjoyment is assured to the participants.

As in other years the Monte Carlo is a festivity different from any other held on the Alma College campus. Gambling of various types will be found along with other types of amusements. The top money winners will be presented gift certificates.

(Editor's note)—Departing from the usual mode of reporting, the *Almanian* has decided to let the fraternity itself express its feelings towards this gala event.

Council Gets Buddy Morrow

Hey Gang! The Student Council has finally taken the big step! We've contracted Buddy Morrow for the Big Name Dance to be held on the night of November 29. The dance will take place between the hours of 9:00 p. m. and 1:00 a. m. and should prove to be the most spectacular event of the year so better keep your eyes and ears open for news concerning the tickets. They'll be on sale in the near future. So until they are—be prepared to be the first one in the ticket line. It's not far away so better get your dates now, I am!

On the more serious side, preparations are now being made by the council for the meeting of the Michigan Association of College Student Governments which is scheduled for the weekend of November 18 and 19. The host this year is the Olivet Student Council.

Prince Rainier and Kelly to Visit Alma

Or if they don't, at least Monaco's biggest show will!

This Saturday night, November 3, the Delts will bring organized vice to Alma College. (That alone should bring everyone out.) But there's more—much more. Millions in fact. All you people who have trouble making Daddy's money stretch far enough can ill afford to miss the huge Delt Monte Carlo this Saturday night at Tyler Center.

Beginning at 8 o'clock, enough money will change hands to buy out Elwell. (HMMMM!) Thousands of dollars will be gambled at a single roll of the dice—millions on the turn of a card—enough

Continued on page 2

Play "Double Doors" To Be Presented

Curtain to Rise November 15-16 at Tyler Center

A drama guaranteed to keep the audience on the edge of its seat is what's in store for Alma College Thursday and Friday nights, November 15 and 16. At 8:15 p.m. the curtain will rise on the gripping melodrama "Double Doors" by Elizabeth McFadden. The annual fall play is being brought through the combined efforts of the Drama Department and the Highland Masquers.

The play centers around Victoria Van Bret, a maiden lady who rules her family with a maniac's firmness. This lead part is filled by Rachel Closser. Her younger sister, portrayed by Jean Molyneux, peacefully submits to Victoria's demands. The action begins when Rip, the half brother, marries Ann Darrow who is below the Van Bret's high social level.

Victoria feels that this is a threat to the integrity of the Van Bret's

fortune. She proceeds to make life miserable for the newly married couple played by Alida Price and Bob Cotter. Rip doesn't have the strength to stand up against his autocratic sister. His wife's individuality is soon squelched by Victoria's domineering personality. Victoria's battle to hold the family under her control almost ends in tragedy. How Victoria tortured the bride with studied austerity and finally tries to murder her is the rising evil throughout the play.

The rehearsals, as reported, progressed quite successfully under the direction of Mr. Raymond Miner. He has been assisted by Mary Lou Heberlein, student director. Mr. Miner said he chose the play because of the choice female roles found in the play itself.

The principal players are backed up by Nancy Martin, Geneva Gould, Bob Beltz, David Bryant, Tom Sansom, Dallas Knapp, and Dennis Wilson.

The play takes place in the atmosphere of 1910 and the staging reflects the grandeur of the Vanderbilt era. The set was designed by Marge Jones who effectively engineered the double doors which play such an important part in the sinister plot. The set building was ahead of schedule according to the stage manager, Dick Bathgate. All committees worked diligently to assure the success of opening night. Heading the various committees are: Betsy McQueen, costumes; Dominic Paterra, house manager; Pat McQuire, props; Fran Davey, publicity; Dennis Wilson, sound; Mary Ann Swartz, tickets.

For the first time students will be admitted on their activity cards. Curtain time will be 8:15 November 15 and 16.

STUDENT COUNCIL PLANS STUDENT NATIONAL ELECT.

Student Council would like to inform the entire student body of the mock election for President and Vice-president of the United States and Governor of Michigan.

The polls will be open from 8:00 a.m. to 6:00 p.m., Monday, November 5. The Council would like to have the co-operation of everyone as we want to compare the results of voting at Alma College with nationwide results.

Instructions for voting are as follows:

An "X" placed in the circle will indicate a straight party vote. Put no marks anywhere else or your ballot will be invalid

or

for split party voting place an "X" in the square before the desired name.

The committee in charge of the election is headed by Harold Turner and Myrtle Cuellar. The committee has been broken down into various groups: Dale Lake handling registration, Barbara Kemerer and Grace Sala taking care of publicity and Tom Dodd handling ballot counting and election results.

We'll see you at the polls Monday!

The voting areas will be located in Tyler Center.

Alma College and WFYC Cooperate on Campus Capers

"Campus Capers" featuring the seven top tunes and campus chatter from Alma College is "on the air" every Wednesday afternoon from 3:30 to 4 over Alma's local station, WFYC.

The program is presented in cooperation with the Speech Department of Alma College and WFYC. The Radio Technique class lead by Professor Mickle is credited with the "brain child," and consequently, the disc jockey program will be part of the class's radio workshop.

Dick Schluckbier began the new program October 23rd and will be the disc jockey for a following number of weeks. Dick, a senior at Alma College, presents his own disc jockey program, "Strictly from Richard," over WSGW on Saturday afternoon.

Every two weeks a different student plays host or hostess on "Campus Capers" and spins the seven top tunes taken from a poll at Alma College. Those in the class beside Dick Schluckbier are as follows: Dave McDowell, Lynn Church, Ray Campbell, Marilyn Mott, Margaret Williams, Mary Lou Heberlein, Connie McCall, Jim Stringham, Mija Rhee, and Chester Gross.

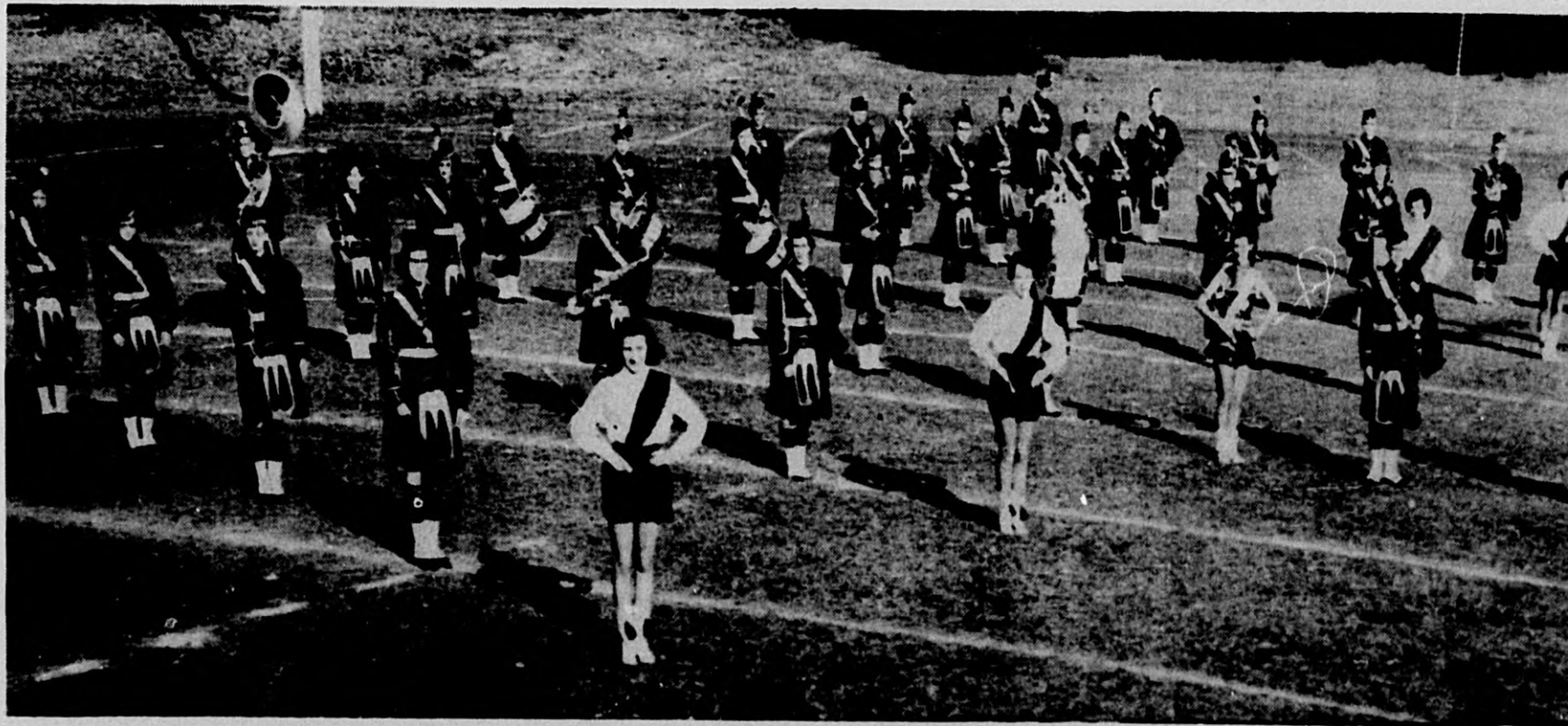
In the line of campus chatter, there are weekly announcements concerning the social calendar, past and coming events, and campus sport news.

The seven top tunes popular with the college students and played on the first program were:

1. LOVE ME TENDER, Elvis Presley
2. GREEN DOOR, Jim Lowe
3. TRUE LOVE, Princess Grace and Bing Crosby
4. WALKIN' IN THE RAIN, Johnny Ray
5. FRIENDLY PERSUASION, Pat Boone
6. SEE SAW, the Moonglows, tied with CANADIAN SUNSET, Eddie Heywood

Tune your dial to WFYC every Wednesday afternoon from 3:30 to 4 and hear Alma College "on the air."

Alma College Marching Kiltie Band . . . and Majorettes



The most colorful organization on the Alma College campus in the fall is the marching Kiltie Band. Clad in Scotch kilts, the 35 musicians along with six majorettes, a bagpiper, and drum major have performed at four home games and one away. Other appearances have been in the college and Alma High School Homecoming parades and also at the pre-game pep meeting.

Under the capable direction of Professor Robert Rufener, the band for the first time in over 10 years has a male drum major. He is Don Sinclair, a sophomore from Flint. Don is also a member of the Phi Phi Alpha fraternity and a representative of the Student Council.

Another first in the band this

year is a solo twirler, Joan Bittner. Joan is a freshman and comes from Elkton, Michigan. She was featured in two of the half time shows and put on an outstanding exhibition in each.

John Goodnow, a freshman from Detroit, has provided traditional bagpipe music for the creation of the Scottish atmosphere. Also adding color to the organization are the majorettes. Under the leadership of head majorette Margaret Williams, other majorettes are Patti Henry, Barbara Oakley, Margaret Sim, and Linda Alexander.

Along with the usual marching, playing, and formations, the band this year has performed some unusual dance steps on the football field. With the home football

Continued on page 2



Joan Bittner, Margaret Williams, Barbara Oakley, Patti Henry, Linda Alexander, and Margaret Sim.

DON'T FORGET
BIG NAME DANCE
Music by Buddy Morrow
Nov. 29—9:00-1:00

The Well Rounded Paradox

The phrase, "a well-rounded man," has been expressed on campus and in general areas of life. Unfortunately, few such persons exist in this world. This is unfortunate because in the strivings of colleges it has become one of the goals of modern so-called education.

One result of this is that the student must, because he is compelled, burden himself down with what may be an excessive amount of activities. A student who needs the amount of time he spends on activities to study, must suffer.

Of course, one would now say that the amount of activities required is not great. This may be true in some cases, but should the student who is loaded with studies be forced into this situation? The goal it seems is not to lessen a student's activities to nothing, but to let him find his own medium. Then it would seem that the problem of too much activities would show itself. This seems to be more realistic.

When one joins an organization because he needs the activity credit to graduate, he starts on the wrong foot immediately. This will not help the introverted personality as much as showing him the merits of an active life outside the classroom. If he goes because of his own desire to, much more is gained.

Let us not be blinded in our course of education that a "well rounded personality" is something to achieve. It would take a lifetime to rub off the rough corners. At the end of the process would be the shallow, non-analyzing thinkers of today. Above all, if the well-rounded education is still sought, let us not force it upon anyone, for this in itself destroys its own purpose.

c.g.

ALMA COLLEGE GETS EASTMAN KODAK GRANT

Eastman Kodak Company announced that it has made direct aid-to-education grants totalling more than \$300,000 this year to 67 privately supported colleges and universities whose graduates have been employed by the company for the past five years. Alma college is listed as a recipient.

The grant plan is part of Kodak's overall aid-to-education program which is expected to result in expenditures this year of over \$650,000 and which will benefit directly about 100 educational institutions. Many other institutions will benefit indirectly this year through other special grants by Kodak.

Under the Kodak grant plan, begun last year with a similar contribution, privately supported educational institutions receive grants based on the number of their graduates who joined Kodak during the fifth year preceding the year in which the grants are made and who are currently employed by the company. This year, grants were based on the number of 1951 college graduates who joined Kodak in that year and who are presently employed in the company's various Rochester plants and offices and in all divisions of the company in the United States.

Payments of \$500 are provided for each year spent by the student at the institution from which he was graduated and completed

a regular degree program at either the undergraduate or graduate level. For example, such an institution would receive \$2,000 for each qualifying employee who had spent four full years at the college. To qualify, an institution must also have had graduates employed at Kodak as of December 31, 1950.

The plan recognizes the part played by these college graduates in Kodak's progress. It also recognizes that colleges and universities, which incur financial deficits in educating their students, are in need of financial assistance. This is particularly true of privately supported institutions that do not receive public funds, Kodak officials point out.

Special grants already made this year by Kodak include contributions to Rochester Institute of Technology, United Negro College Fund, National Fund for Medical Education, and Empire State Foundation of Independent Liberal Arts Colleges.

Eastman Kodak Company has supported various other educational projects, some for many years. The company recently announced the awarding of 34 fellowships for the academic year 1956-57 to a like number of colleges and universities for advanced study at the graduate level in physics, chemistry, and chemical engineering. The fellowship program was begun in 1939.

Under the Kodak aid-to-education formula, the total cost in any one year of all grants to aid higher education is limited to one-half of one per cent of the company's earnings before taxes in the preceding year.

Scandinavian Seminars Offered

More American students are attending the non-profit Scandinavian Seminars than ever before, Aage Rosendal Nielsen, executive director of the Scandinavian Seminars for Cultural Studies, 127A East 73rd Street, New York 21, has announced. Some 50 American students are now attending the nine-months long Seminars in Scandinavia, he said, and this is the largest group to attend since they were established 8 years ago. Applications are now being accepted for the 1957-58 Seminars for a special fee of \$900, which includes tuition, board and room, plus travel.

Mature students have an opportunity to become a real part of the Danish, Swedish or Norwegian life and culture by living with two families for a month each, learning the language and studying in it, and living and studying for six months with Scandinavian students in the famous Folk Schools. These liberal arts colleges, where the principal emphasis is on the humanities, represent a good cross-section of the Scandinavian people. The folk schools were started in 1844 by N.F.S. Grundtvig, Denmark's internationally famous educator.

One of the nine months is reserved for a field trip during which the student may travel in all of the Scandinavian countries, if he desires, in pursuit of his special field of interest. Among the study projects available are: adult education, the cooperatives, government, physical education, labor relations, arts and crafts, social welfare, history, literature, and agriculture.

Three types of students may enroll for the Scandinavian Seminars, including college juniors, graduates, adult educators and teachers. Undergraduates may obtain academic credit by individual arrangement with their colleges for their junior year in Scandinavia.

Dr. Halfdan Gregersen is the academic advisor for the program in Scandinavia. Dr. Gregersen was formerly Dean of Williams College, Williamson, Mass., and was a professor at Harvard University.

First Concert In Civic Music Series Heard

The duo piano team of Nelson and Neal opened the local Civic Music Series in Alma on October 29 and was enthusiastically received by a capacity audience. Comments were heard that this was the finest performance Alma has had the pleasure of hearing. Added to their excellent playing was the deep charm of their personalities which was sensed by all those who had the opportunity of hearing and seeing them for this concert.

The young couple had experienced a trying day which included electrical difficulty and a fire in their moving van making it impossible to bring their own fine pianos, also necessitating their completing the trip here by airplane.

The program included a wide variety of music from the opening with the Toccata and Fugue in D minor by Bach to the final encore, an arrangement of the well known Yankee Doodle, first as it might have been written by Gershwin and then by Beethoven. The audience showed its approval by calling the pianists back for many encores. Nelson and Neal more than made up for the misfortune of having to leave their pianos back in Cincinnati.

The next Civic Music Series presentation will be on Saturday, December 1 and present the Goldowsky Opera Theatre in "The Secret Marriage," by Cimarosa.

Letters to the Editor . . .

Women's Residence Hall
Alma College
October 23, 1956

To the Editor of the Almanian:

We Freshmen girls are naturally interested in the sororities here at Alma. Most of our information we get from members and for the rest we must rely upon the Almanian. We have read, and re-read, the column "With the Greeks", and come not to a conclusion, but a question. Are you lacking copy and proof readers, or promoting dirty rushing?

Somehow all the 'goofs' in the column appear in the article about Sigma Phi. First of all we notice the head, larger type than the others . . . If you had not messed up the rest of the article this probably wouldn't matter. But isn't it too bad to call attention to the mistakes? Things like that just don't happen, when a certain type size is requested, it appears.

Now that we have had attention called to the Sig Phis let's see what you have to say about them. "We wish to welcome . . ." Maybe we're 'out of it', but the dictionary is lacking that word. "All hands did a good job . . ." well it's a good trick if they can do it!

An apology seems to be in order also as it's very doubtful if Mrs. Klugh appreciates being labeled the patroness of a fraternity! "The fraternity would like to express appreciation to our new patroness, Mrs. Klugh . . ." Slanderous remarks, shame on you!!
The Freshmen girls

Dear Freshmen Girls,

In response to your letter of the 23rd I believe it is fitting that a reply be made. First I hope that the letter is truly representative of the feelings of all the girls of the above mentioned class and not the idea of just one slightly steamed up hoping to be member of the Sigma Phi sorority.

Kiltie Band

(continued from page 1)

games now over with, most of the marching musicians are planning on continuing as members of the concert band which will meet in new quarters this year in Tyler Auditorium. So with marching season past for another year, it's "hats off" to the Kiltie Band who "whether we win or lose" supply that all important musical pep and cheerful atmosphere.

Musicians in this year's marching band are: Dick Berry, Priscilla Blackburn, Dave Bryant, Joan Chapman, Rachel Closser, Spencer Cordes, Art Dittenber, Doris Drummond, Jack Forbes, Bruce Farrell, Sondra Cawrse, Dennis Wilson, Bill Woodland, Stu Young, Pat Lehman, Kay Carrick, Jerry Nichols, Paul Mosher, and John Moon.

Charlie Miller, Martha Houts, Carl Greene, Janet Gettel, Janie Ogawa, Ed Passenger, Ken Smith, Ann Reavey, Wendy Smith, Sandra Robinson, Kathy Shier, Phyllis Williams, Larry Thompson, and Dick Watterworth.

It is obvious that an explanation is due and this is it. Things like this DO happen . . . Due to my inability to be present at the proof reading of the Almanian issue involved, I left the job entirely up to one not too experienced person. Checking over 4,000 words per page at 5:00 p. m. is not fun especially after a day's school work. This type of job really requires two persons to check and double check the galley sheets and then check the first dummy copies. One cannot understand the work involved unless actually confronted with the immediate task. If the above letter writers have done such work then they have an understanding of what I mean. If not then . . .

Please look up the actual word meaning of "slanderous" it is, at least to me, rather powerful in its implications.

Thank you for being on the alert and catching such errors.

Yours sincerely,
Christ Goutis,
Almanian Editor

New Entrances to the College

Have you noticed the new structures at the east end of the campus? Perhaps you have been wondering what they are. They are a token of appreciation of the local unions and townspeople of Alma. Labor, materials, and evergreen plantings, yet to be added, were all given free of charge.

The function of the entrance is to present a more dramatic entrance way and to set off the college from the town.

Sarvis, the designer, had simplicity as his main theme. With the addition of twelve inch stainless steel letters signifying Alma College the entrances should be very effective.

Monte Carlo

(continued from page 1)

perhaps to pay tuition at Alma for six months.

Horse racing, roulette, craps, color wheel, cards (you name it)—everything a gambler dreams of. Psychology students, come and study the emotions of the players as they release their prepressions. Business majors, come and watch the biggest financial transactions of the age. And you mathematicians—come and count money, (Gosh, do we need help). In fact, everyone come.

Bring a woman if you have to. Thrills, fun, and prizes. The top money winner in the male and female categories will be awarded \$10 gift certificates at Miller's Clothing Store. Here's a chance to get rid of those smelly socks.

So make sure "you are there." Buy a ticket for 1/400 of a C-note from any deli. Just tell 'em, "GRANNY SENT ME."

READY TO HATCH

Saturday, November 3	Delt Monte Carlo
Thursday, November 15	One act plays by Highland Masquers
Wednesday, November 21	Thanksgiving Vacation begins
Monday, November 26	Classes resume
Thursday, November 29	Big Name Dance
Saturday, December 8	Sig Phi Dime Dance
Friday, Dec. 14	Delt Holly House
Wednesday, Dec. 19	Christmas Vacation begins
Thursday, January 3	Classes resume
Saturday, January 12	Delt Sig Open House
Friday, January 18	One act plays
Saturday, January 19	KI Luxury Liner
Wednesday, January 23	Exams begin
Wednesday, January 30	First semester ends
Monday, February 4	Second semester register

the almanian

A Student Publication Founded in 1900.
Published Twice Monthly

By the Students of Alma College

Editor-in-Chief Christ Goutis

Assistant Editor Robert Rhodes

Reporters: Carol Gelman, Herb Gerber, Tom Glover, Dave Hogberg, Chuck Humphrey, Dick Johnson, Joan Moore, Richard Moore, Doris Turnbull, Judy Willmore.

Sports: Dick Vinciguerra

Typists: Beverly Eicholtz, Una Edwards, Susan Fanington, Jackie Giar, Alice Immer, Kay Montgomery, Judy Willmore.

Circulation and Exchange: Wallace Frank

Business Manager: Bob Lambert

Photographers: Larry Brink, George Atkins.

ARNOLD



With the Greeks

DELTA SIGMA PHI

Well, if you've noticed the big grin on the face of President Bobby Atkins, it's because the rooms in the chapter house are really looking fine. The working twitch hit the house full tilt when Foreman Kickhofel spurred on Brothers Elliott, Boerma, and Harper to greater ambitions by building a new closet and laying floor tile. Next Tom Bluck and his crew of Elowsky, Messman, and Meggett, not to be out-done, also laid tile and other sundry items adding new charm to the serenity of their spacious abode. Plans for painting rooms are next on the agenda and will be done in the near future.

The activities held a serenade in honor of Marg White who was pinned by Brother Bob Beltz. We would like to offer our congratulations to both of them.

We're having an open house this Friday night at 8:00 p.m., so by all means 'fall in'. We'll be happy to see and get to know you.

KAPPA IOTA

The K.I.'s are proud to welcome into membership Priscilla Baldwin, Ruth Hawley, Dorothy MacLeod and Margaret Williams.

Our pledges entertained us at a pledge party after formal initiation and dinner at the Park Hotel.

The annual K.I.-Phi Halloween House was a rousing success, complete with decorations, cider and doughnuts.

The K.I.'s entertained their fathers with a Father-Daughter banquet followed by the Albion football game.

Good luck to the volleyball team. Let's hope they can keep up the good playing.

DELT DODGERS CHAMPS

The Delt Dodgers copped the championship of the Intramural Football League this fall by edging out the second place Delt Sig Chargers and the third place Phi Phiebers. It was more or less a photo finish for the championship with the Dodgers showing their power when the chips were down by coming out on top. They fielded a fine ball club under the direction of Captain Ralph Springfield.

The fine aggregations of the Delt Sigs and the Phis made it no easy task for the supremacy of the Dodgers. All in all it was a fine football season with nearly 200 men participating in the league. It is said to be one of the finest leagues in some years.

The two intramural sports to be started on Monday, November 5th, will be the Volley Ball League and the Bowling league. These two leagues promise to be plenty exciting with a total of fourteen teams in the volley ball league and eleven teams in the bowling league. Football, being the first intramural sport of the year, seems to have started off a good intramural athletic season this year. Within the next few months the Volley Ball and Bowling Leagues will be the dominant sports.

NEW APPOINTMENT

Mrs. Libbie Eilola of Detroit, Michigan has been appointed as assistant to the head resident in the new Women's Residence Hall and as half-time assistant in the Personnel Office.

Mrs. Eilola has a son in school at the University of Michigan, and a daughter living in Ann Arbor, Michigan.

Attend Annual Convention

Professors Glen C. Stewart, Mae Nelson Stewart, and Francis Hughes attended the Annual Convention of the Michigan Music Teachers Association in Detroit on October 21, 22, and 23. The convention was held in the Hotel Statler, Detroit, with an outstanding series of lectures, forums, and concerts of special interest to music teachers.

Current teaching methods and materials were discussed in the various forums. Lecturers of national distinction were heard in the fields of piano, organ, and voice pedagogy, theory, composition, and church music.

SIGMA PHI

The writer wishes to apologize to the new members of Sig Phi. The new members are Lou Ada Bousquette, Nancy Johnson, Nancy Jo Nelson, Fran Harper and Rosemary Van Meer. Formal initiation was held Monday, October 22, in the sorority room. After the initiation the sorority adjourned to Jean Molyneux's house for refreshments, home-made apple pie and coffee. Monday, October 29, the new members threw a party for the old members. The theme was a Halloween party. All members took part. Mother Hall took the grand prize for the evening.

To the girls on campus! Start thinking and supporting AWS' National Convention.

NOTICE TO ALL ORGANIZATIONS

The material for publication both under the heading "Around the Campus" and "With the Greeks" must come in on time or it cannot be printed. The deadline for the next edition of the Almaniac is Monday, November 12.

The Editor

GRADUATE RECORD EXAMINATIONS TO BE HELD 1957

Princeton, N. J., September 14: The Graduate Record Examinations, required of applicants for admission to a number of graduate schools, will be administered at examination centers throughout the country four times in the coming year, Educational Testing Service has announced. During 1955-56 more than 9,000 students took the GRE in partial fulfillment of admission requirements of graduate schools which prescribed it.

In 1957, the dates are January 19, April 27, and July 6. ETS advises each applicant to inquire of the graduate school of his choice which of the examinations he should take and on which dates. Applicants for graduate school fellowships should ordinarily take the designated examinations in the fall administration.

The GRE tests offered in these nationwide programs include a test of general scholastic ability and advanced level tests of achievement in sixteen different subject matter fields. According to ETS, candidates are permitted to take the Aptitude Test and/or one of the Advanced Tests.

A Bulletin of Information, (in which an application is inserted) provides details of registration and administration as well as sample questions, may be obtained from college advisers or directly from Educational Testing Service, 20 Nassau Street, Princeton, New Jersey, or P.O. Box 27896, Los Angeles 27, California. A completed application must reach the ETS office at least fifteen days before the date of the administration for which the candidate is applying.

Dr. Sullivan Speaker

Dr. Ernest G. Sullivan, head of the Alma College Music Department, was the principal speaker at the vocal music group of the Michigan Educators Association regional meeting, held at Saginaw High October 18 and 19.

Dr. Sullivan's topic was "Developing Good Choral Tone" and his presentation consisted of a School on Thursday and Friday, lecture and a demonstration using a group of twenty-five high school students from Saginaw High School as a demonstrating group. This meeting was the annual two-day gathering of the MEA and all elementary and high school teachers in this region were present. Besides Dr. Sullivan's music group, there were workshops available in all other teaching areas.

SOCIAL CALENDAR READY THIS WEEK

The Personnel Office announced that the Annual Social Calendar will be ready for distribution this coming week. Copies will be available at Tyler Center Snack Bar and in the Personnel Office.

Corrections to the yearly calendar will be made through the weekly calendar.

The weekly calendar is a new feature this year, necessitated by the increasing number of campus events. It will be a substitute for the former monthly calendar. Copies will be provided for all residence hall and campus bulletin boards and will be placed in the mail boxes of faculty and off-campus students.

Persons wishing to have events listed on the Weekly Calendar may do so by leaving a note in writing in the Personnel Office not later than 11:00 a. m. on Friday mornings.

A list of regularly scheduled meetings may also be obtained from the Personnel Office.

Law Admission Examination to Be Given Soon

The Law School Admission Test required of applicants for admission to a number of leading American law schools, will be given at more than 100 centers throughout the United States on the mornings of November 10, 1956, February 16, May 4, and August 10, 1957. During 1955-56 over 11,000 applicants took this test, and their scores were sent to over 100 law schools.

A candidate must make separate application for admission to each law school of his choice and should inquire of each whether it wishes him to take the Law School Admission Test and when. Since many law schools select their freshman classes in the spring preceding their entrance, candidates for admission to next year's classes are advised ordinarily to take either the November or the February test, if possible.

The Law School Admission Test, prepared and administered by Educational Testing Service, features objective questions measuring verbal aptitudes and reasoning ability rather than acquired information. It cannot be 'crammed' for. Sample question and information regarding registration for and administration of the test are given in a Bulletin of Information.

The Bulletin (in which an application for the test is inserted) should be obtained four to six weeks in advance of the desired testing date from Law School Admission Test, Educational Testing Service, 20 Nassau Street, Princeton, New Jersey. Completed applications must be received at least ten days before the desired testing date in order to allow ETS time to complete the necessary testing arrangements for each candidate.

WHERE GOES THE WAX THIS YEAR?

The Connecticut Daily Campus reports this one: It seem there's been a boom in the sale of mustache wax lately. Since that item hasn't been overly popular since the days of Teddy Roosevelt, manufacturers started checking back and traced the increased sales to the least expected place, the college campus. America's clean-shaven college youth are now buying the product, but not for the purpose for which it was originally intended. Undergraduates, after adopting the crew cut, couldn't make their hair bristle. Then, some wise fellow remembered great grandpa, and found that nothing will stiffen a crew-cut better than good, old fashioned mustache wax. Result: New life for the makers of mustache wax.

Around the Campus

HOME ECONOMICS CLUB HAS INITIATION

New and old members met for supper on Thursday, October 18, and then went to the Home Economics Department for the traditional candlelight initiation service. Pat Sowers, President, was in charge of the meeting. Twenty-three girls were taken in as new members.

We are looking forward to the Workshop to be held here November 17. The committees are working hard to complete plans for a successful workshop.

ENJOY YOURSELF IT'S LATER THAN YOU THINK

The W.A.A. is again organized and looking forward to a big year. We anticipate the club will be bigger and better than ever. We would also like to extend a hearty welcome to our new freshmen members.

Alma has been chosen the "President School" for the annual W.A.A. workshop to be held at Clear Lake near Battle Creek, November 17th and 18th. More than 100 girls from other Michigan colleges will be there to discuss W.A.A. problems and activities. This year's novel theme is, "Enjoy Yourself It's Later Than You Think." It is hoped that a fine weekend will be enjoyed by all present. Anyone interested in attending may contact the president, Marie Boyce.

Intramurals have begun. There have been five volleyball teams formed: Alpha Theta, Kappa Iota, Sigma Phi, Greenies and the 3rd Floor Terrors. Organize a team and come over to the gym on Tuesday and Thursday; it's fun. There is still plenty of time.

All girls are welcome to join the Women's Athletic Association. If you are interested, please watch for the announcement of the next meeting.

The Spillane Influence

Just about everybody has tried their hand at doing a parody of Mickey Spillane and sometimes the results are pretty tiring. However, we found this one, from the Ivory Tower edition of the University of Minnesota Daily, amusing, particularly since it has the advantage of an O. Henry-type ending. It's called "Quench Me, Deadly" and begins:

It was a warm, stagnant night . . . no breeze, no moon. And very late. Silently he moved along the sidewalk past blackened dormitories. The others were all asleep; but he was restless, an annoying pang in the pit of his stomach.

After a quick glance behind, he approached the half-open doorway of a darkened building. He paused, fumbling in his pocket. Then, making no sound, he entered the gloomy interior and was enveloped in shadows. A solitary click . . . then silence.

Suddenly these were shadows from inside. "That corner" A hat slipped out in the darkness, connecting solidly, noisily with its target. A grunt, a quick glance. The pounding blows intensified. Between these violent curses split the air. A foot stomped hard, dry on by powerful leg muscles, and there was a short pleading cry. Then it was over.

For a moment he lingered in the doorway, leaning on the frame for support. Then he shuffled unsteadily out into the street, his raw, skinned knuckles visible in the yellow illumination given off by the street light. Head hung low, shoulders slouched, he walked dejectedly down the street and into the night, seeming not to know where to go, what to do.

Later in the week, maintenance men arrived to adjust the faulty mechanism of the large red machine so that it would operate properly, dispensing a bottle of Coca-Cola whenever a dime was inserted in the coin slot.

A. C. A. NEWS

In the past two weeks A.C.A. has had two fine visual presentations. The first was the film "Martin Luther", which depicted the life and works of that great religious leader who broke away from the accepted traditions of Rome. The large number of students present enjoyed this dynamic lesson in the history of Europe. Our latest show was a series of slides on summer camp work. Chuck Zampich told of his experiences at Camp Westminster on Higgins Lake. His slides and talk pointed up the benefits and opportunities for college students in camp counseling.

Remember, all students are invited to A.C.A. on Wednesday at 7:00 p.m.

F. T. A. MEETS

The Future Teachers Association met last Thursday in their new meeting place, which is now Room 102 in the Old Main. The F.T.A. has outgrown its old place and has increased its membership since last year.

Mrs. Jack Harris was guest speaker at the last meeting. She was a graduate of Michigan State University and now teaches fifth grade at Lincoln School in Alma. Her talk was centered around special education and special children, particularly the blind. Samples of blind were passed along with some other interesting data.

TOWNSEND FLOWERS

Central Michigan's Florists

315 N. State Ph. 58



Sweaters, Jackets, Shirts Sportcoats Latest in College Styles

MODERN DRY CLEANERS

See Us FOR DRY CLEANING SATISFACTION

Stu Young & Carol Stephens College Representatives

WEE WASH IT

QUICK SERVICE

Shirt Finishing and Dry Cleaning Service

110 Center St. Ph. 673, Alma

TROWER FURNITURE COMPANY

425 Wright Ave.

DOUD DRUGS

Phone Alma 15



Where Service is a Habit! Phone 246 • Alma, Mich.

MARTIN STORES

Nation's Greatest Value Givers

Scots Win Over Olivet

In a one man team battle between Alma's Frank Lawrence and Olivet's Bill McNally, Lawrence outscored McNally to bring Alma a 20-14 MIAA victory at Olivet's Homecoming, October 20.

All three of Alma's touchdowns were made by Lawrence on two short plunges and one set up by a pass interception. McNally scored his by returning a 95 yard kickoff and on a 50-yard pass play started by a 31-yard kickoff return.

Climaxing a 60-yard drive was a 6-yard plunge over the line by Lawrence for the Scots' first touchdown. Minutes later, McNally made his 95 yard kickoff return to tie the score 7-7.

Later a pass from Olivet's Rollie Wahl was intercepted by Lawrence and he was downed on the Alma 42. A couple plays later Lawrence charged 25 yards to a touchdown. Bob Hill kicked his second conversion to bring the score to 14-7.

Alma Underdog Against Ferris

Alma College will face another uphill battle Saturday night when they travel to Big Rapids for a game with Ferris Institute. Alma will carry a record of two victories and five defeats into the contest while Ferris has won four and lost two.

Once again the Scots will be underdogs as Coach Sam Ketchman of Ferris has come up with another strong ball club. Their only two losses have been to Michigan Tech 20-0 and powerful Northern Michigan 19-0.

The Scots, who lost a heart-breaking 14-13 decision to Albion last Saturday, hope to spring an upset over the Bulldogs, but they realize they must stop Ferris' speedy halfback Russ McLean. He was the star in last Saturday's 19-7 victory over Adrian when twice in the last half he scored on two beautiful 52 yard runs to lead the Bulldogs to victory.

Ferris, meanwhile, will have to keep a close watch on halfback Tom Johnson, who blossomed as a passer against Albion when he completed seven of twelve pass attempts for 148 of the Scots' 154 yards gained through the air. Two of his tosses went for the Scots' only touchdowns. Both touchdowns were spectacular plays with halfback Bob Hill nabbing the first for 50 yards while end Jack DeCou caught the other for 63 yards. The final touchdown play could have meant a tie score had the extra point not been fumbled.

Coach Art Smith's main problem is still the inconsistency of the ground attack. There is sufficient speed in the backfield with Hill, halfback Pat Brady, and quarterback John Harris leading the way, but they have not been getting the key blocks to spring them loose.

The game will be played at the High School Field with game time at 7:30 p.m. This will be the last time Ferris will have to use the high school field as their own new stadium will be ready to play in next year.

Alma vs. Ferris
Sat. Nov. 3rd There

Ritzee Hamburg

Featuring Good Meals
and Fine Coffee
211 W. Superior St.

Sample of Scot Action at Olivet



Scot Harriers Take Olivet 24-31

Running a four and one-tenth mile, roller coaster type course on a damp Saturday the Alma Scot Harriers defeated the Olivet Harriers, 24-31.

A host of Olivet runners lead the race up to the mile mark, then the Scots started moving up. At the two mile mark Larry Braak and Dick Vinciguerra took the lead. Fred Immer of Alma soon came up to join them.

As the runners crossed the finish line Vinciguerra, Braak, and Immer held the first three places with the times of 23:26, 23:45 and 23:50. Olivet had the next four places. Jim Burris and Bruce Gardner, both of Alma, placed eighth and tenth, respectively, to put Alma's first five places across.

The Olivet meet was the Alma Harriers' third win of the season. They would have been a team to reckon with in the M.I.A.A. Field Day had not fate stepped in. The team captain, Larry Braak, came up with a broken foot during the race. The Harriers have been hurt badly by this loss.

Scots Lose Heart-breaker to Britons

The point that broke the camel's back was the unsuccessful try for the extra point by the Scots. Gene Bohn's two conversions decided Albion College's victory over Alma College last Saturday.

Being Alma's fifth loss in a season of seven games and a 1-4 league record, it puts Albion into a second place tie with Kalamazoo College.

The half ended after a battle in which neither team was able to score. Halfway through the third quarter Albion lead off when Don Van Gilder plunged over from the 1 yard line. For the remainder of the third period both teams held to keep the score 7-0.

With two minutes gone in the fourth period the Scots scored their first touchdown. Bob Hill scored on a 54-yard pass play. The ball traveled 29 yards through the air thrown by Tom Johnson to Hill on the 25 who took off for the score. The conversion by Bill Klenk tied the score 7-7.

John Leppi, with 1:32 minutes left, ran a punt back 64 yards for Albion's second touchdown. Bohn kicked the winning point.

Seconds later the Scots came across when Jack De Cou scored on a pass from Johnson, the play covering 63 yards.

Johnson, after being chased back from the 37 to the 10, found De Cou downfield, unguarded, and threw the ball. De Cou taking the ball on the Albion 35 proceeded untouched for the Scot score. The pass from center, for the extra point, was fumbled by Johnson, thus making the final score, Albion 14, Alma 13.

Scot Harriers Lose to Albion

For the first time in six years the Scot Harriers were able to keep the Albion Harriers from blanketing them. A complete shutout in Cross Country is a 15-50 score. The Scots had a man place in the first five preventing a shutout by Albion.

Albion had the first place with Jim Tauh running the course in 21:29. He was closely followed by two teammates. Dick Vinciguerra of Alma was fourth with a 22:26. The next four men were Britons. Fred Immer was second for the Scots, taking ninth place. Also running for the Scots were Larry Brink, Jim Burris, Lou Geocker, and Bruce Gardner.

Larry Braak's broken foot is a bad turn of events for the team. Although they lost, it was a moral victory because they had one man in Albion's first five, which is one thing that isn't done to Albion very often, especially by Alma College in Cross Country.

MIRROR BARBER SHOP
4 Chairs and Faster Service
212 E. Superior St.

McHUGH FORD
Tel. 684
SALES AND SERVICE

NOW-FROM Esterbrook®
A NEW INSTANT-STARTING BALL POINT!

- New "CST" Controlled Surface Tension Ink. No smear—no skip—no stall.
- KING-SIZE Cartridge—4½-mile writing capacity.
- WATERFAST on paper—yet washes from fabrics in soap or detergent.
- FLOATING BALL construction—smoother writing, less wear.
- INSTANT STARTING. Writes the moment point touches paper.

Standard Model \$2.50
Medium or Extra-Fine line

VARSITY SHOP

Alma College Host Intramural to Cross Country

On November 14, Alma College will be host to the M.I.A.A. Cross Country Field Day. This annual meet is the climax of the cross country season. With each college having the meet on its own course once every seven years, it brings an interest of the sport to the various colleges.

For the past 16 years Albion College has had the prestige of taking the M.I.A.A. championship. Albion is favored to win again this year but they will have strong opposition from Kalamazoo and Hope which are both powerhouses in cross country this year.

Because of Larry Braak's injury, Alma will at the most have only one man in the first ten places. The Scots' place in M.I.A.A. will be determined in this meet. The team would like to have as many students as possible to cheer them on. The four mile run will start opposite the Arts Building and will end on the 50 yard line.

All teams are hoping for better weather than last year's at Albion. The weather then was a crisp 30 degrees with snow threatening. The team representing Alma will be Fred Immer, Bruce Gardner, Lou Geocker, Bob Wollard, Larry Brink, Jim Burris and Dick Vinciguerra.

Will see you there on Wednesday, November 14.

ALMA HARDWARE
Complete Hardware Line
325 N. State



Bert Peterson
The Equitable Life
'Living Insurance'

DRINK . . MILK
Look Good — Feel Good
ALMA DAIRY
Phone 198 413 Wright Ave.

ALMA TRAILER CO.
903 Michigan Ave.
Alma, Michigan

ALMA CITY DRY CLEANERS
Your College Agents
Bob Wallace and Geo. Arrick

W. F. LUETH & SON
JEWELERS

DENNY'S PASTRY SHOP
Where Quality Counts
Complete Line of Baked Goods

Jodie Hasty has been chosen as manager of the volleyball intramurals. If interested in participating, contact her. Anyone is welcome to play.

Standings	W	L
Kappa Iota	2	0
Greenies	1	1
Sigma Phi	1	1
Alpha Theta	1	1
3rd Floor Terrors	0	2

STOVALL'S STUDIO AND CAMERA SHOP HEADQUARTERS

ABBEY FLOOR COVERINGS

If your floor is shabby,
It's a job for "Abbey"
130 W. Superior, Alma

ALMA STATE BANK
SAFE, RELIABLE
Your Patronage Appreciated
Member F. D. I. C.

GAY'S 5 AND 10c STORES
Serve Yourself and Save

SPORTSMAN'S CENTER
Outdoor Man's Headquarters
306 E. Superior
Alma Mich.

CHURCH'S JEWELERS

The Store Confidence Built
GIFTS FOR BIRTHDAYS,
WEDDINGS AND
ANNIVERSARIES

BOWL ON THE BEST:

You are fortunate in having 12 beautiful, modern Brunswick Centennial alleys readily available at Riviera Lanes in St. Louis; with clean, enjoyable surroundings and atmosphere. Free instruction if you wish. Open bowling every afternoon and entire week ends. Make up a party or organize a day league.

RIVIERA LANES
St. Louis—Phone 4861

First State Bank

OLD—SAFE—RELIABLE
Your Banking Needs always taken care of promptly
Serving this Community for 77 years
Member F. D. I. C.

ARNOLD

