

Sidewalks Inadequate For Quad-Cutting Characters

A practice known on some campuses as "quad-cutting" has, unfortunately, spread to Alma. If the reader doubts this he has only to observe the well-defined ruts which exist beginning at a point in front of the chapel next to Superior Street and proceeding diagonally across the once-beautiful lawn toward the chow hall.

Fortunately visitors and the more courteous students on campus DO use the walks—which just happen to be placed at strategic enough intervals to provide suitable vias—if one is not too concerned with losing a second or two in walking time.

We are sure that a reasonably large segment of the student population shares with the Student Council concern over the fast-disappearing neatness of our campus lawns. Gentle hints of fences and signs goes entirely disregarded.

We feel that it is time for the responsible students of Alma to step into this matter. The procedure is simple:

Every time you see someone cutting across the grass when the side-walk will do just as well, yell at the top of your lungs "Quad-cutter!" This is the same principle used by many large cities to "embarrass-out" jay-walking by pointing out by means of loud speakers, the offenders.

It's worth a try, isn't it?

Feature Jimmy Dorsey Orchestra At Formal Big Name Dance

Dates Announced For Leader Conf.

Saturday, December 6, has been set for the leadership conference sponsored by the Student Council, according to Bob Ludtke, council president.

Meeting at 1:30 p. m. in room 100, Old Main, the conference will discuss topics vital to the activity and attitudes of the campus. (See story in last week's almanian). Participants are being contacted this week.

Announce Tyler Election Tally

Aughenbaugh Has Prettiest Pins

At 2:50 p.m. November 18, Chuck Aughenbaugh (No. 6) shyly stood before the picture of his and five other Almanians' legs, being urged to smile for a "whole" picture. He had just been announced "the man on campus with the most beautiful legs."

There were five other brave men who displayed pictures of their legs on the Tyler bulletin board to encourage donations for the purchase of a romper-pool table for the student center.

Bruce Johnstone (No. 1) Saginaw senior, placed second, with George Dice (No. 5) also a senior from Saginaw, third. Other participants included Bill York (4) Three Rivers senior; Lyndon Salathiel (3), Pontiac sophomore; and Len Fase (2), Ada sophomore.

Chuck Aughenbaugh, a senior, son of Mr. and Mrs. John Llewellyn of Orchard Lake, is one of two children. Born in Pontiac, he attended Walled high school there, and served as captain of the basketball team.

Affiliated with Delta Gamma Tau on Alma's campus, Chuck is an economics and business administration major. His hobbies include a study of the Civil War, and sports, which he exercises in intramural competition.

The "man with the most beautiful legs" on Alma's campus hopes to enter a career in sales, promotion or advertising upon his graduation in June.

The "leg-art contest was conducted under the auspices of the Tyler Board.

Alma's annual Big Name Dance sponsored by the student council, will be held on Thursday, December 4. The "Jimmy Dorsey Orchestra" under the direction of Lee Castle will provide the music.

Tickets will be \$3.30 (tax included) per couple and go on sale Wednesday, November 19. They may be purchased from any Student Council member.

The dance is formal and will be held in Van Dusen Commons from 9:00-1:00 A.M. Bill York, senior from Three Rivers and Vice-President of the Student Council, is the general chairman of the dance.

Tickets will be available to townspeople Thursday after 4:00 P.M.

Notice

All persons who have not picked up their last years VOICE of the SCOTSMAN records or know of someone who has not received theirs, would they please send their name by no later than Friday, Nov. 22 to: Tyler Center; Box No. 48; Alma College; Alma, Michigan.

Senior Women Lead Sem. 144 Averages

Dugan, Ludtke Attend Meeting

Bob Ludtke, senior, Stockbridge, and Bert Dugan, sophomore, Plainwell, attended the National Student Association of Michigan regional meeting on November 22 and 23. The meeting was held at Michigan State University and topics under discussion were similar to those which will be discussed at the Leadership Conference Monday night, ranging from general student affairs to faculty-student relations.

Registrar's Office Releases Latest Figures; Cole Cottage At Bottom

Senior women lead the campus point standings, by groups, for the spring semester, according to information released this week by the Registrar's office. Ranking second was Kappa Iota sorority with Junior women a close third.

Men of Alma College come late with Junior men taking seventh place in honors with the rest of their brothers trailing the length of the list.

Cole cottage occupied the basement with Freshmen men just slightly elevated.

The senior women showed a decided improvement over semester 143, raising from a 1.98 average to 2.04. Kappa Iota, in second place for the fall semester, raised their average 1/100 to remain in second. The junior women, however, forged ahead from a 1.72 fourth place average for semester 143, to third place this time with a 1.92 average, thus nosing out Sigma Phi. The latter dropped to fourth place even though raising its collective average from 1.77 to 1.87.

A number of groups showed sizeable rises in point standing. On the other hand there were two showing drops. Cole Cottage, at the bottom of the list for semester 143 with a 0.84 standing, slid to a 0.75 for semester 144, holding the last place. Tau Kappa Epsilon as a whole dropped from 1.38 for semester 143 to 1.28 for the spring term.

The complete list, in its order for the spring semester, is printed below, with a comparison of the two semesters (143 and 144):

	144	143
Senior Women	2.04	1.98
Kappa Iota	1.93	1.92
Junior Women	1.92	1.72
Sigma Phi	1.87	1.77
All seniors	1.79	1.67
All juniors	1.77	1.48
Junior men	1.71	1.39
Alpha Theta	1.67	1.61
Senior men	1.66	1.53
Gelston Hall	1.64	1.50
Town men (Day Students)	1.64	
Town women	1.63	1.39
All women	1.62	1.48
Delta Sigma Phi	1.62	1.37
Sophomore women	1.58	1.41
Pioneer Hall	1.53	1.51
Delta Gamma Tau	1.52	1.50
Men residing off campus	1.51	1.20
All full-time students	1.47	1.28
All sophomores	1.47	1.27
Freshman women	1.43	1.31
Tau Kappa Epsilon residence	1.42	1.43
Sophomore men	1.39	1.18
All men	1.37	1.17
Delta Sigma Phi Residence	1.33	1.21
Tau Kappa Epsilon	1.28	1.38
Delta Gamma Tau Residence	1.25	1.19
All freshmen	1.21	1.05
Wright Hall	1.20	1.10
Freshmen men	1.05	0.88
Cole Cottage	0.75	0.98
Veterans		0.98



Left to right, Mrs. Ruth Phillips (partially pictured), Betsy McQueen, John Goodenow, Peter Pape, Bob Wollard, Clessen Martin, Bob Rhodes, Mike Leonard. Standing are Dick Marzolf and Dick Heuschele, the returning members of Phi Sigma Pi.

Induct Phi Sig Pi Members

Eight Alma students were formally inducted by Dr. William Boyd, Dean of the College, into Alma's Phi Sigma Pi Honorary Fraternity last Monday night.

The new members were Elizabeth McQueen, senior from Birmingham; Michael Leonard, senior from Lake City; Ruth Phillips, senior from Alma; Robert Rhodes, senior from Alma; Robert Wollard, junior from Detroit; Clessen Martin, senior from Perrinton; Gerald Pape, junior from Deckerville; and John Goodenow, junior from Detroit.

See PHI SIG Page 2



To Host High School Debates

On November 22, Alma College will host the first of an annual series of High School debates. Sixty debates will go on simultaneously at three different times during the contest.

Three rounds of debate will be followed by the championship round in the afternoon. Trophies will be awarded to the winning teams and ten certificates will be given to top debaters.

Alma College Debate Coach Harold Mikle has received acceptances from 24 Michigan schools.

Loss of Bloomers Adds To Highlites "Plain & Fancy"

"Plain and Fancy", the first presentation of the Alma College Drama Series this year, met with great success both Friday and Saturday nights. A capacity crowd attended the performances both nights. The highly successful Broadway musical of two seasons ago was produced by Paul Storey, of the English department and Dr. Sullivan of the music department.

Featured in principal roles were Marilyn Henry as Hilda; Anne Ellison as Ruth, Hal Waller as Dan; Terry Hunt as Peter; Margaret McLeod as Katie; Jerry Heberlein as Ezra, George Keevil as Papa Yoder and Judy Forbes as Ma Yoder.

Behind the scenes of the finished and sparkling production, however, all did not run so smoothly. The larangitice

See PLAY—page 2

THE SPIRIT OF THANKSGIVING



Study Council's Constitution

In order to study the judicial power of the student council a committee has been appointed to study the constitution of the council.

Committee members include Vern Hipwell, Bert Dugan, Bob Abernathy and Myrtle Cueller.

According to a student council member this action is resulting from the excessive lawn cutting on campus, and the failure of some students to observe the "dress" rules for Monday and Thursday night dinners.

College, Famous Guests To Assist H.S. Music Day

Mischa Mischkoff, concertmaster for the Detroit Symphony Orchestra and Roland Hayes, internationally-renowned tenor will join the Alma College Music department in High School Music Day, to be held on the Alma campus No-

vember 22, starting at 9:30 a.m.

Schools in areas bounded by Roscommon, Oceana, Ingham and Sanilac counties have been invited to send their students of music to this clinic.

Through performances by the guest artists and campus groups, it is hoped that visiting students will derive inspiration and a broader understanding of music.

The program is as follows: 9:30 registration; 10:00 Convocation; 10:30 recital, Roland Hayes, tenor; 11:00 clinic sessions in applied music in conjunction with a musical program; 12:00 tour of the Campus. At 12:30 luncheon will be served. From 1:30 to 3:00, there will be a band concert, discussion groups and the Alma College A Cappella Choir concert.

The only fee required will be 65 cents for luncheon.

The Modern Library

A Large Selection of "The Best of the Worlds' Best Books"

is available at the

VARSITY SHOP

\$1.65 and \$2.95

AUTO PARTS and ACCESSORIES at a Savings.

WESTERN AUTO STORE

CLABUESCH CITY DRUG

Walgreen Agency

Fountain Service
School Supplies
Gibson Greeting Cards
Cosmetics
Prescriptions

Open

Week Days 8:30 to 10 p.m.
Sunday 9-1 and 5-9 p.m.

FREE DELIVERY

220 E. Superior Phone 1

SAWKINS FURNITURE STORES

Gifts — China — Crystal — Silver

Luggage — Leather Goods

Music — Stereo Records — Band Instruments

at

SAWKINS

208 E. Superior

Phone 178-R

RECORD CLUB MEMBERS

SAVE 20%

During November we will mark your cards double. Buy one record—we give credit to you for two. Clubs will be discontinued during DECEMBER ONLY, due to Christmas rush.

WABER'S RECORD SHOP

SEE LATEST RELEASES IN STEREO

Also latest country, western, classical, popular and show albums.

Vreeland Hosts Student Affairs Committee Meet

The first meeting of the Student Affairs Committee was held at the home of Mrs. Esther Vreeland, Dean of Women, on Wednesday, November 12. Attending the meeting were Miss Diefenbach, Mrs. Ruth Phillips, Kent Hawley, Dean of Men, and professor McClintock and Professor Mikle, chairman of the committee. Student representation to the committee includes Eric Sundek, senior, Saginaw, Bert Dugan, sophomore, Plainwell, and Mary Onapu, sophomore, Frankenmuth.

Topics of discussion at this meeting were general and ranged from policy to student-faculty relations. It was an introductory meeting for the student members, in order to familiarize them with the purpose and proceedings of the committee work to be done.

Student Affairs Committee, as one which was formed last year, is an organization which discusses both long-range and immediate possibilities for improvement in the college community.

Last year the six faculty members and three student participants discussed and made decisions on issues of immediate concern such as Alminization, new techniques in freshman orientation, and big band presentations, and in the long-range planning area, the possibilities of changes in the admittance of members to various student organizations and the development of a college community.

The members on last year's committee were Professor Diefenbach, Professor Ruefner, Dean Vreeland, Dean Hawley, Professor Hughes, Judy Korn, Hank Bova, Dennis Collier, and chairing the group, Professor Harold Mikle.

Find New Dress At Name Dance

This year's Big Name Dance will find the well dressed Alma College woman attired in a "dressey" cocktail dress. This affair is an annual semi-formal dance, and, of course, means a temporary outlawing of the skirts, sweaters, and bobby sox normally seen at an all-college affair.

Materials will range from cottons to brochades, silks to satins and velvets. There will be a wide range of colors, but the most predominant, contrary to popular expectation, will be whites and light flowered prints rather than the usual blacks, grays, browns, greens, and dark colors.

Gloves and shoes will be of a matching color, but will form a contrast to the dress.

The majority of gowns will be sheaths, with either semi-full or full skirted ones next. Sacks will be almost non-existent.

Corsages are never worn at any college dance, so there is no worry over the matching of flowers and dress.

"The best reason for holding your chin up when in trouble is that it keeps the mouth closed."
—Ivern Boyett

Stop in and pick out your PORTABLE TYPEWRITER

Now for Christmas— From our Complete Stock

COOK'S OFFICE SUPPLIES

"Everything for the Office"

412 GRATIOT ALMA, MICH. PHONE 7

Play

Continued from page 1

which had hit members of the cast during rehearsals, hit George Keevil on opening night. As George moved, acted and sang on the stage, he was really only mouthing the words while Mr. Storey dubbed in from the orchestra pit.



Marilyn Henry

Marilyn Henry brought down the house with her "I'll Show Him" number. Little did the audience know that losing her bloomers, which seemed part of the act was not part of the act at all.

The cast also had to cope with furniture suddenly, and unexpectedly falling apart, and substituting lettuce for heads of cabbage.

Phi Sig

Continued from page 1

Members of last year, both seniors, are Richard Heuschele, from Alma, and Richard Marzolf from St. Louis.

Phi Sigma Pi's purpose is to accord some means of bringing recognition to academic honors. It has, in the past, been connected with Phi Beta Kappa. The induction of members into Phi Sigma Pi, which in the past was held in the spring, has been moved to early fall to provide incentive for, and examples to, the rest of the college.

Candidates to Phi Sigma Pi are elected to membership by the present student and faculty members after consideration of scholarship, character and residence requirements.

After the induction, new members were given their pins and refreshments were served.

RITZEE HAMBURG

Featuring PIZZA PIE

REAL ITALIAN STYLE

ALONG WITH

GOOD MEALS AND FINE COFFEE

211 W. Superior St.

★ MOVIES BRING HAPPINESS ★

Adults—65c
Students—45c
Children—25c

STRAND
Alma, Mich.
PHONE 266

Open Weekdays
6:30
Sundays—4:30

NOW thru SAT., NOV. 22 (One of the Greatest)

STANLEY KRAMER presents

TONY CURTIS as
SIDNEY POITIER

THE DEFIANT ONES



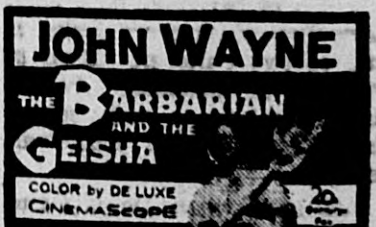
Released thru UNITED ARTISTS

• MATINEE •
Sat. at 1:30
"SITTING BULL"
PLUS CARTOONS

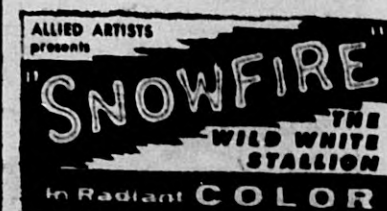
Adults
45c

Children
25c

SUN., MON., TUES.,
NOV. 23-24-25



WED., THURS., FRI., SAT.—NOV. 26-27-28-29
(Double Feature)—Both in Color



—PLUS—

"THE LITTLEST HOBO"

with Buddy Hart

MIRROR BARBER SHOP

Fastest and Best Service In Town

E. Superior

ALMA, MICH.

CHURCH'S JEWELERS

The Store Confidence Built

GIFTS FOR BIRTH-DAYS, WEDDINGS & ANNIVERSARIES

DOUD DRUG STORE

The Friendliest in Town

"Everything for Your Needs"

STATE AT SUPERIOR

If, in expression of the living presence of Christ, in the pages of the ALMANIAN, each member of Alma College finds: (1) Some one thing to enjoy (2) Some one thing to interest (3) Some one thing to challenge (4) Some one thing to lead him more surely toward "life more abundant" (5) Some one thing to help him find and know himself more adequately—then we shall have just BEGUN to fulfill our obligation to Alma College—which is to help students realize that God is the very force of living and learning.

EDITORIAL DEPARTMENT

Editor-in-Chief Mary Onapu
 Managing Editor Robin E. Butler
 Copy Editor Dave Bryant
 Women's Editor Kaye Ferguson
 Reporters: Virginia Hickey, Judy Walter.
 Feature Editor Jennie Smith
 Reporters: Bruce Johnstone, Don Neal, Dave Bryant
 News Editor Sharon Stephens
 Reporters: Nancy Malott, Norm Handy
 Sports Editor Bob Sievwright
 Reporters: Tito Piccolo, Lynn Salathiel
 Photographers: Ron McMenamin, Dan Fox
 Foreign Correspondent Bernette Shepherd
 Columnists: Bruce Johnstone, Donn Neal.
 Proofreaders: David Bryant, Margaret Schreiber, Mary Onapu.

BUSINESS DEPARTMENT

Business Manager A. Alan Botta
 Assistant Business Manager Robert Streadwick
 Advertising Solicitors: Hank Tinney, Roslyn Arthur
 Circulation Manager Bob Wineberger
 Distributors: Ken Harper, Gorman Ward, Doug Bartlett, Mike Leonard, Marvin Boerms, Louis Goecker, Thomas E. Bluck, Karen Beam.
 Morgue Manager Elsie Mortimer
 Assistant Morgue Manager Jan Heaco

DEADLINES

Columns, editorials, letters-to-the-editor, events, happening on Wednesday, Thursday, Friday, Saturday and Sunday, **Monday noon.**

Club, fraternity and sorority news, events of Monday, **Tuesday noon.**

Absolute deadline, 5:30 p.m. Tuesday.

All photographs to be used in the paper must be in by **Monday noon** of the week of publication desired.

Space will not be saved or guaranteed for late items unless prior arrangements have been made with the **Editor-in-Chief.**

Students, faculty members, administrators, employees of Alma College, \$2.50 per year; \$1.25 per semester. All others, \$3.00 per year; \$1.50 per semester. Single copies 10 cents. Single copies mailed 15 cents. Make checks payable to "The Almanian".

Government Demands On Colleges Could Curtail Academic Freedom

(ACP)—A proposal to ensure academic freedom of students is being studied by University of California (Berkeley) professors.

The issue of academic freedom arose, says the DAILY CALIFORNIAN, when during loyalty-security checks, the Civil Service, Military Intelligence and Federal Bureau of Investigation requested information — other than related to the classroom — on prospective employees.

The Professors' proposal is this:

"This faculty asserts that freedom of discussion in the classroom and in academic consultation is fundamental to higher education. The essential freedom of a university can be seriously jeopardized if argument and expression of opinion are inhibited, particularly in those subjects which are held controversial in some quarters as to some moments in history.

"Therefore, reports by a teacher concerning the beliefs, attitudes, activities and associations of a student regarding religion, politics and public affairs in general are not permissible when the reports are based on information acquired by the teacher in the course of instruction or in the course of other student-teacher relations that involve the student academic program."

Employers generally get information on students by asking their University professor and officials.

Explains the DAILY CALIFORNIAN: "Questions regarding student performances in the classroom, whether students were lazy, loudmouths or cheated in examinations, are all logical and answerable according to the committee's (professors') statement. The committee believes, however, that questions regarding politics, religion, activities and associations should not be answered if the University want to be regarded as free.

"The proposed resolution, according to the committee, is not intended to criticize the government's loyalty-security program, but to safeguard students participating in fundamental University instruction and counseling.

"The major reason for this proposal, according to the committee report, is that if students knew their religious and political beliefs were not free from faculty response to loyalty-security inquiries, the timidity that prevails among many to hold different and new ideas and to express them, would erupt into a fear of social pressure"

Beauchamp Hospitalized

Bill Beauchamp, sophomore from Pontiac, is in St. Joseph's Hospital in Pontiac under observation due to an infected foot. It is not known how long he will remain there. Bill is a member of the Delta Gamma Tau Fraternity.

Wedler, Busby Are Sigma Phi Reps.

Judy Wedler and Barbara Busby will represent Sigma Phi Sorority at the Leadership Conference, Saturday, December 6. Alternates to the conference are Lois Taylor, Sally Englehart, Charlene Walton, and Nancy Malott.



THE CYNIC'S CORNER

by Bruce Johnstone

Of the several nuisances the students on this campus have to put up with, perhaps two of the more obvious ones are chapel and Monday and Thursday's dress-up dinner program.

Unfortunately, it would seem that there is no solution in the foreseeable future. The synod of Michigan has laid one situation upon us; and for the other our administration doesn't seem willing to do away with the eating requirement. Their philosophy seems to be that if one must act like a pig, he might as well act like a pig in a suit.

Tell me; as long as we do have to bear these woes, why not schedule the chapel services for the same evenings, make them shorter, and thus put our suits, ad nauseam, to some use other than a target for gravy drops?

Letters

To The Editor

Re: A-C or 1, 2, 3 discussion. What's the point? The original articles A-C types us all (but one). It sounds like a completely hopeless situation in which the individual does not exist as such. We are pictured as black or white, no shades of gray, much less color. Our plight seems one of no escape. We are given no hint as to the way (if those responsible for the article know of one) in which to become thinking individuals.

The creator of group three has us in a worse mess. Now we can no longer feel secure in the fact that EVERYONE is caught in the web of conformity. If this writer is correct, some have truly broken from it. No more can we satisfy ourselves with the 'sub-life' level of the group. But as with A-C, we find no 'message of salvation' in group three.

It appears this whole subject is now bordering on the idiotic. No writer so far has put forth any ideas as to what should be done, nor do they seem satisfied with what is. Please, won't some profound thinker suggest a course of action instead of just spouting off? If this can't be done — shut up! ALPHA

Well, as you said, "If this can't be done"

Dear Conformist III, You have most vividly described a branch of the non-conformist cult. Where the typical non-conformist becomes the "I don't care" person, you have portrayed for us the 'Intellectual Bohemian'. They abound on this campus with their false fronts of knowledge. Behind this hides their desire to be different, but in a more respectable way. Your 'Threes' run in packs and conform to their own as much as anyone else.

Show me a true non-conformist, an individual, and I'll show you a mental institution filled with his "group." All truly individuals—caring nothing about what the others do, say, or think—living in their own worlds.

PLACEMENT CASEMENT

Not much time left to sign up for interviews with Mr. Ken Newman of the Michigan Bell Telephone Co., who will be on campus Monday, November 24. There are all types of openings with this company and Bell is interested in anyone who will acquire a B.A. or B.S. degree in June.

Mr. J. W. Podesta of the General Motors Company will be on campus Wednesday, December 3, to interview any interested seniors for the following types of openings: trainees in a one year program with G.M.I. leading to assignments in production control, purchasing, or manufacturing supervision; graduates who are interested in sales, personnel or production supervision. Sign up in the Placement Office for interview appointments.

Observations . . .

. . . by harvey

We (of the '98c Pipe Club of Alma College') were sitting around discussing the merits, or lack of them, of Governor Faubus the other night. Suddenly one of the recent joiners came up with the idea of making a tape recording of the noise in the hall. As this seemed somewhat better than the present subject, it was agreed upon. This is the way the tape went:

"PSSSSSHHHH." "What was that?" "I don't know, but let's look and see." (The opening of a door is heard in the background.) "Hey look—there's a big 'Z' in shaving cream all over the door!" "Don't tell me they're up to that again I thought that would stop when we were told to turn in all our shaving cream." "Oh well, back to Orval." "Yeh."

"Hey 'Nels', what's that long black thing sticking out from under your bed?" "That? Oh, that just a cat I picked up today. I figures if Ma Whitford can have one, so can I." "That's the spirit!" "You know, I've got a dog in my room." "What's he look like?" "Oh, he's about the same size as my roommate." "What's his name?" "Doug." "Yeh."

"Hey, I've got an idea!" "What?" "Let's take our RA's door off and put it in the latrine!" "No, we did that last night." "Oh, that's right. We have to wait until tomorrow night to do that again, don't we?" "Yeh."

(A loud banging is heard in the background.) "What's that?" "That's just those guys playing frisbee in the hall again." "In the hall?" "Well, it's dark outside." "When do they study?" "They don't. They play frisbee instead." "Gee, I'll miss them next semester." "Yeh."

(The door is heard opening and someone enters the room.) "Hey, 'Scrappy', guess what I just saw in the latrine!" "What?" "There was this huge pumpkin, you see, and it was just sitting there on the floor staring up at me!" "Well, what's so unusual about that?" "You mean that's happened before?" "Sure, we find one there at least twice a week." "Yeh."

"Quick, lock the door!" "Why?" "I can hear the corridor mascot coming!" "You mean that fellow from the basement who lost so much money on the world series?" "Yeh, that's him." "Say, 'Chico', when does he study? I hear he didn't do too well on his mid-term grades." "Oh, he studies quite a bit—at least he studies the insides of other people's rooms." "Yeh."

(A pounding is heard in the background.) "What's that noise?" "Oh, that's just 'Hose' chasing the girls again." "But there aren't any girls in Wright Hall!" "SSSSHHHH! Not so loud—'Hose' doesn't know that!" "Yeh."

(A loud knock is heard.) "What's that?" "Oh, that's just 'Flop' knocking on the wall for us to be quiet. He says he's studying, but I think he has a card game going most of the time." "It sounds like it from here—he's making more noise than we are." "Yeh."

"Well, I see that the tape is about to run out." "Let's turn it off and get back to good ol' Orval." "YEH!"

You were correct in accusing the writer of A-C of being 100% wrong on one point: there is no one exception. Like it or not—we conform. BETA

College actually become a genuinely friendly college?

Signed

A Disgusted Freshman

Dear Disgusted:

Remember, the motto says that " friendliness links learning with living." Obviously you would like to enjoy living. If you do not find friendliness perhaps you would find it profitable to analyze your relationship with learning—this is, according to the motto, one of the factors—a factor which your letter fails to mention. REB

Attend A.W.S. Conference Sat.

Saturday, November 15, six Alma College students and Dean Ester Vreeland attended the Annual Michigan State Meet for the Associated Women Students (A.W.S.) held at Eastern Michigan College in Ypsilanti. Fourteen Michigan colleges participated. Those representing Alma College were Sharon Beardsley, president of Alma's A.W.S.; Sue Edgar, vice-president; Barbara Busby, president of Bruske; Mary Jo Houts and Ovona Blanchard, both dorm council representatives; and Kay King, publicity chairman.

The individual discussion groups centered around the conference's theme of "Actions and Attitudes". Dr. Elizabeth Drews of Michigan State University, the featured speaker who works with gifted children, gave a most inspiring speech on "Actions and Attitudes Incorporated". From this conference, the Alma students gained much enthusiasm and many new ideas.

Scots Win 5, Lose 3 at Season's End

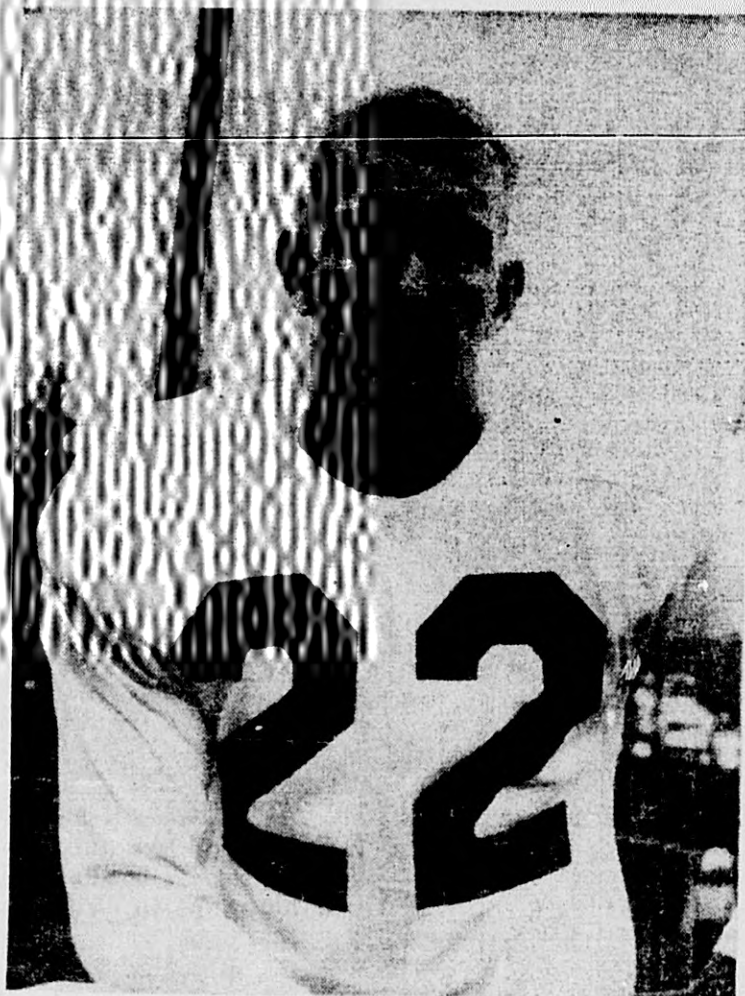
by Bob Stevewright
This football season that little word "if" has a big meaning for the Scots of Alma College. If they'd had a little more luck, they might have won all of their games. If they hadn't fumbled on several occasions the outcome would certainly have been different. The Scots were plagued all season long by "fumble-itus". They came so close but yet so far too many times.

The final record was five wins and three losses. These losses were to the MIAA co-champions Hillsdale, Albion, and Hope. Hope was the only team to defeat the Scots in a convincing manner. However, if Hope had not scored their first touchdown of the game as they did, the score may have ended quite differently. Hope kicked off and the Alma backs let the ball roll into the end zone thinking it would be brought back out to their twenty yard line. But the rule book says that a kickoff is a free ball and Hope recovered it for the touchdown. As a result this first touchdown broke the backs of the Alma squad and they were never able to recover, the score ending 32-12.

The Scots gave away their game with Hillsdale 20-13. Costly mistakes also hurt them in the Albion game as they lost 25-14. Both games should have been Alma victories. This would have meant a share of the championship for them.

This year's team was green which might account for a lot of the errors. Freshmen comprised the major portion of the team.

The losses can't all be blamed on mistakes though. There were injuries to key players throughout the season that hurt them tremendously. Terry Ebricht, the sophomore quarterback, was hurt in practice after the first game, a non-league victory over Indiana Central, and didn't reach peak efficiency again until late in the season. He missed the Hope and Kalamazoo games entirely and played only a short time in the Adrian game. Against Hillsdale, he was ineffective, as the elbow on his throwing arm was still badly swollen. These games constituted half of the season! As it was, he still ended up second among league's passers, missing the leadership by a scant 25 yards. In just two games he gained over 90% of his total league passing yardage of 358 yards. Think what might have hap-



Bill Klenk

pened if he had escaped injury all season.

Halfback Len Fase, the best break away runner in the league, suffered an ankle injury that slowed him considerably. He missed two league games but still scored thirty points on five touchdowns and had four others called back.

Dave Peters is another halfback who was not himself as a result of a leg injury.

The Scots can be thankful that nothing happened to versatile co-captain Bill Klenk, center Bob Norris and tackle Fraser Dean.

Klenk played every position in the backfield at one time or another during the season. He took over the passing when Ebricht was out, punted when halfback Lyn Salathiel suffered his kidney injury and displayed brilliant running ability also.

Norris and Dean did outstanding jobs both offensively and defensively all season long.

Head Coach Art Smith also praised linemen Dale Lake, Ernie Mousseau and Jim Northrup for fine work. Among the freshmen, backs Dick Fowler, Tom Thorpe and linemen Jim Greenlees, Ken Renaud, and Gary Wagerson were singled out as playing good ball for the Scots.

The Scots fared well among the state's small colleges. They ended up in fifth place among fourteen colleges. Out of the top five, four teams were from the MIAA. Besides Alma, they were the league's co-champions Hope, Hillsdale and Albion who were one, two, and three. Central Michigan College was fourth.

Fase and Klenk nailed down the seventh and eighth spots respectively in the state scoring race. Alma only played eight games this year while most other schools played nine and ten game schedules.

In the league, Alma led the MIAA in total passing yardage with 828 yards and ended up fourth in total offense with 1323 yards. The team was second in punting with an average of 35.9 yards per punt.

Individually, the Scots had no one leading any particular department in the league but they just missed in a couple. Lyn Salathiel lost the punting dual with Olivet's Dick Forman by only seven hundredths of a yard! Salathiel was far and away the best punter in the

league and would have run away with the lead except that one of his punts which went off the side of his foot. This punt only went twelve yards and meant the difference. He got tremendous height on his punts which cut down the punt returns and helped the defensive platoon.

He averaged 37.26 yards per try in 31 punts. In two games, he averaged better than forty yards per punt. Several during the year traveled over fifty yards! This is really getting a foot into the ball especially when one considers the fact that he stands from twelve to fifteen yards behind the line of scrimmage when punting. The distance of a punt is measured from the scrimmage line to the farthest point of advance of the ball.

As mentioned before, Ebricht took second place in passing. He would have led in this department by a wide margin had he played in all of the games. Only a sophomore this year, he should have two great seasons left. He completed over forty per cent of his passes in league competition.

Klenk was fourth in passing with a total of 322 yards in fifteen completions.

Jim Northrup ended up third in pass receiving with twelve passes caught for 213 yards. Right behind him was Klenk with eight receptions good for 192 yards. A pass wasn't thrown to him until the last two league games of the season or he might have ended up higher. Lyn Salathiel caught seven passes for 135 yards and seventh place among the league's leaders.

This season is over and there are even brighter prospects for next year. A summary of this season's statistics follow:

Alma	33	53	44	33	169
Opponents	32	44	28	12	116
			Alma	Opp.	
First Downs		85		108	
Passing yardage	62	1067	49	620	
Rushing yardage	283	779	435	1422	
Punting	42	35.5	47	31.7	
Fumbles-lost	33	22	45	21	
Penalties	53	475	54	515	
Scoring—Opponents:	18				
touchdowns, eight P.A.T.					
Alma: 25 touchdowns, 16 P. A. T., one field goal					

2-1 V-Ball Record For Delta Sigma Phi

The Delta Sig's held a "game fry" at the fraternity house last Monday evening. The game for the feast was provided by the successful hunters of the fraternity.

The Delt Sig Dealers have a 2-1 record in their volleyball games.

The Delt Sigs are also making plans for the annual conclave to be held in Detroit this year.

Klenk On First All-MIAA Team

Co-captain Bill Klenk was selected to be on the first team of the All-MIAA football team this year for the first time. He was selected on the second team last year at an end position. This year he is in the backfield.

The MIAA team is selected each year by the league's coaches.

The Scot's handyman, who did almost everything this year except usher at the games, was the only player selected outside of the three co-champions, Hillsdale, Albion, and Hope.

Klenk played all of the backfield positions during the season and either led his team or placed second in all of the important statistical departments. He threw passes, caught passes, punted, kicked extra points, carried the ball, called signals, and played one of the linebacker spots on defense. He is one of the most versatile men ever to play football at Alma College and his absence next season will be sorely missed by the team.

The 21 year old Klenk is the son of Mr. and Mrs. John Klenk of Roseville, Michigan.

Alma was also honored by three selections on the All-MIAA second team, Fraser Dean was honored at tackle position, Jim Northrup at an end position, and Len Fase was a backfield selection. Fase and Northrup are sophomores and Dean is a junior.

Dean was a standout both on offense and defense for the Scots this year and one of the most feared linemen in the league. Although not particularly large for a lineman (six-one, 215 pounds), he got the jump on his opponents.

Fase gave many a crowd a thrill this season with his break away running. There was always the threat that he "might go all the way" whenever he took a punt or a kickoff or carried the ball. The little halfback was one of the smallest and fastest men in the league and very shifty.

Northrup caught sixteen passes during the year for 329 yards and two touchdowns as he led the Scots in pass receiving. He also did the kicking off for his team and averaged 47.1 per kick.

Another sophomore, Bob Norris, received honorable mention. Norris played linebacker on defense and center on offense. He also called defensive signals part of the time.

Alma College students and faculty congratulate these men on their athletic attainments.

First team selections are as follows:

Ends—Tom Taylor* Albion Senior

Jim Reynolds* Hillsdale Junior

Tackles—Jim Larkin Hillsdale Sophomore

Larry TerMolen* Hope Senior

Guards—Lanny Leak Albion Senior
Don Paarlberg Hope Senior
Center—Ed Taliman Hillsdale Senior

Backs — Bill Klenk Alma Senior

Walt Poe Hillsdale Senior
Don Vangilder Albion Senior

*Unanimous choices

Film Shown At Ski Club

Thursday nite, the ski club presented the second in a series of ski movies after their meeting. Lyn Salathiel, sophomore, Pontiac, one man committee, obtained the films from the University of Michigan Film Library. In the future he hopes to get movies for the more developed skiers. Anyone interested in an adventure in skiing, through the medium of film and sound is cordially invited. The club is planning a movie a week throughout the season.

Women Attend "Bowling Playday"

Saturday, November 15th., five Alma College women and their sponsor attended a W.M. I.A.A. Bowling Playday at Adrian, Michigan.

During the morning, these six were given instruction in the sport by a professional bowler, and in the afternoon they competed in a mixed school tournament.

Those attending from Alma were Dutch Dawson, Sally Kent, Karin Crowmer, June Mitchner, and Joyce Otto. Miss Dillinger accompanied the women as sponsor.

Construct New Tennis Courts

New tennis courts are under construction at Alma College, located behind Wright Hall, men's residence hall. In the spring, four additional courts will be laid out in "The Jungle," the wooded area behind the football stadium.

Formerly, the tennis courts were located on the site where the new science building is being erected with funds from the Dow Foundation.

NICE WARDROBE?

WEE WASH IT!*

110 Center St.

*STUDENT RATES!

BANK OF ALMA

BANKING FOR EVERYBODY

Student Accounts Invited

LITTLE ROCK LUMBER CO.

Where Service is a Habit!

Phone 246 • Alma, Mich.

ALMA LUMBER CO.

114 Woodworth Phone 19 Alma, Michigan

DRINK . . . MILK

LOOK GOOD FEEL GOOD

MILK and **Alma Dairy** ICE CREAM

Phone 198 413 Wright Ave.