



# The Almanian

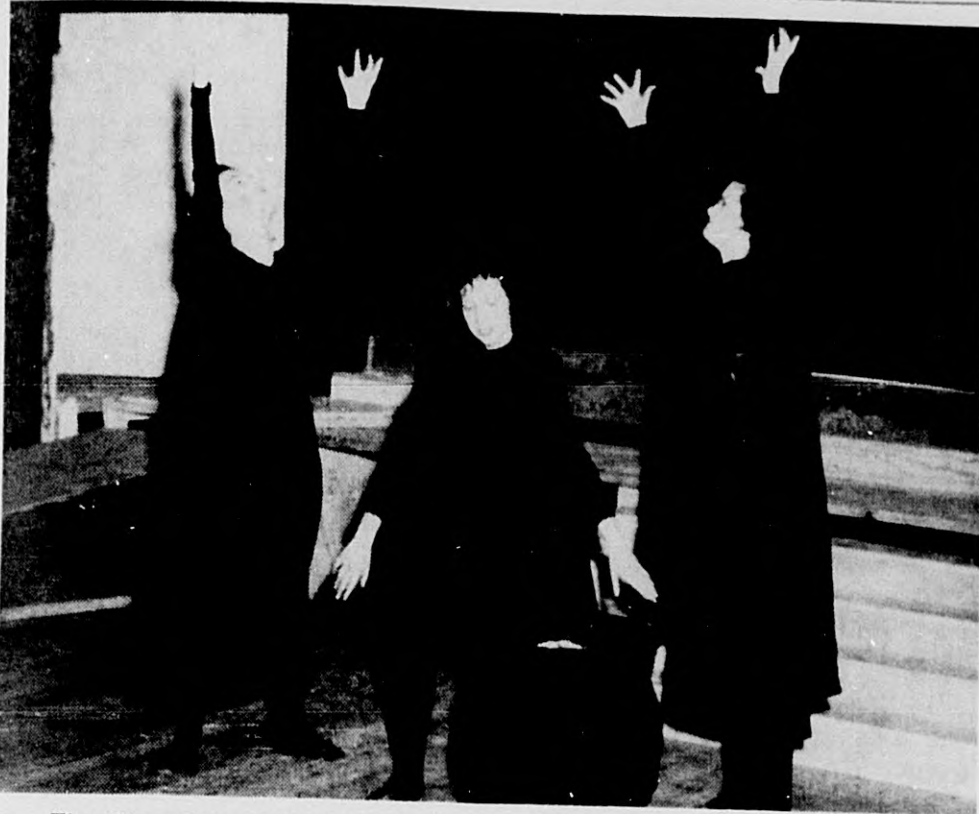
Mailed under PL&R  
34.66  
Permit No. 37  
Alma, Michigan

Volume 45

A Student Publication Founded in 1900

Friday, March 6, 1953

Number 113



The three tight-clad witches who will appear in the drama club production of **MACBETH** rehearse some eerie song-and dance over their cauldron. They are, left to right, Elfrieda Beyer, Saginaw; Alice Welsh, Armada; and Betty Anderson, Schoolcraft. Authentic Elizabethan costumes have been rented for the rest of the cast.

## Drama Club Goes Elizabethan:

### Authentic Costumes Here for 'Macbeth'

Shakespeare's tragedy, **Macbeth**, will be presented next Monday and Tuesday evenings to the student body and next Wednesday morning to the Alma high school.

Authentic Elizabethan costumes have been rented for the production, and the cast has been using them for final rehearsals this week. Stuart Friesema is playing Macbeth; Allene Stolt, Lady Macbeth.

An interesting innovation in the production is the appearance of the three witches in black tights and capes to dance seductively about their cauldron. The witches are played by Alice Welsh, Elfrieda Beyer and Betty Anderson.

The text of the play was arranged by Professors Daugherty and Gregory, and Professor Daugherty prepared a special narration for this production.

Production committees were headed by Bob Fritch, stage manager, and Earl Hayward, business manager. Willard Payne assists Mr. Fritch, and Don Drew assists Mr. Hayward.

The stage crew includes Maurice Baldwin, Gary Bortles, Dave Cornell, Gerald Duncanson, Jo Greeley, Joyce Howard, Larry Huckle, Bev Ewing, Donna Kyes,

Beverly Laird, Ed Malik, Gerry Meyer, and Chuck Parrott.

Robert Kelley is in charge of lighting, assisted by Bob Piper and Peggy Thibedeau. The props committee is headed by Barbara Lawrence, and includes Jim Hollingsworth, Helen Joynt, Jean Wallace, and Jim Mills.

Edna La Fleur is chairman of the make-up committee, assisted by Jackie McAllister, Sue Miller, and Jim Coombes.

Shirley Sherman, Marilyn Castile, and Jean MacKellar are in charge of costumes.

The ticket committee includes Marcia Risser, chairman, and Roger Vance, Grant Gallup, and Bruce Reed.

The publicity committee is headed by Bill Farris, and helping him were Jan Armitage, Larry Jessup, Mary Jane Hart, Gene Schnelz, and Pete Hanson. Barbara Bauer and Sherra Nugent are in charge of programmes.

George Spriggs is house manager, and ushers are Angie Erdman, Marge Lyda, Jo Pryne, Joyce Lilley, Ann Hoffman and Jackie McAllister.

Mary Jo Frye is in charge of sound effects.

## Construction Started on New Dining Hall

Ground has been broken for the building of Alma's new dining hall, the Van Dusen commons.

The Miller-Davis company, having completed construction of the Jerry Tyler student center, last week began construction of the new dining hall, and expects to finish the work in time for the opening of school in the fall.

The building will house a large dining room, seating 500, which will have floor-space equal to that of the auditorium in the student center. Another dining room, seating 75 guests, will be convertible into two dining rooms by a soundproof sliding door; each smaller dining room would then seat about 35 guests.

A still smaller private dining room will seat 15 guests. The commons will also house its own lounge, which will measure 18 by 40 feet.

The Illinois Range company has been contracted to supply the kitchen with the best of modern chrome steel equipment, and the Tyler Fixture corporation has the contract for the refrigeration in the new building.

The Van Dusen commons will be built and equipped as a gift to the college and its future by Mr. and Mrs. Charles B. Van Dusen of Detroit.

It is to be done in the same style of architecture as the Tyler building, and will be joined to it by a breezeway.

Further plans for the development of the college plant, pending the subscription of additional funds, include a women's dormitory, which will be adjacent to the Van Dusen building, and new music and science buildings.

## Mrs. Juergens Engaged as Tyler Center Hostess

Mrs. Helen Juergens has been engaged by the college to serve as part time hostess and informal counselor in the student center. She will work closely with the Dean of Men and Dean of Women. Her duties will include a joint supervisory and hostess function; (1) assistance with scheduling of rooms in student center, (2) information, (3) informal counseling. She will make her home in Alma with her daughter and son-in-law, Dr. and Mrs. Wallman.

## "If Goodness Lead them not"

A frequent conversation piece at the new snack bar is, "It is so wonderful here: it just doesn't seem like Alma." A heresy, yes, but a way of saying that here at last we have a comfortable, beautiful addition to the brave little band of buildings that has housed what has passed for a community of scholars since the turn of the century.

And here we have something too, that (unlike our heavenly home) is a perishable thing, a house that was indeed made with hands. So, we do not ask that it survive the millenium. But it must survive the class of '53, and we hope it will be here when they send their offspring back to learn the history and principles of ping pong and the laboratory approach to pocket billiards. It is our bounden duty to tread lightly upon this new property.

Dean Stielstra's common sense chapel talk nearly two weeks ago said more about the proper care of the place than half a dozen editorials could say. But his dictum, like any other, will be observed only if it is repeated often enough. For not everyone is yet conscience-stricken when he discovers that one of his feet is sleeping on a fragile table or soiling a luxurious cushion.

Not everyone has realized that the place for flames is in the fireplace, and not a corner of the divan.

Not everyone has noticed the abundance of ash trays or the ubiquitous wastepaper baskets.

Not everyone is already a gentleman or a lady.

But in the atmosphere of well-being, in the good will come by in the cups, within earshot of a new aesthetic (O day of gladness!) variety of music, there is no telling how soon the stragglers will see the folly of their ways and will learn to respect both themselves and the building. Would we cajole long enough, "if goodness lead them not, yet weariness" may herd them with the rest.

G.M.G.

## The Almanian

Published Fortnightly by Students of Alma College  
Subscription Price, \$1.50 per annum. Address for all purposes, Almanian, Alma College, Alma, Michigan.

Member, Intercollegiate Press

Grant M. Gallup	Editor
R. Pingree Vance	Associate Editor
May Butrick	Assistant Editor
Bill Farris	News Editor
Jane French	Feature Editor
Walt Roman	Sports Editor
Robert H. Kelley	Business Manager

### REPORTERS

Stuart Friesema, Alice Welsh, Barbara Bauer, Jody Lilley, Dave Hollar, Gene Pattison, Howard Wiley.  
Photographers—Gordon Converse, Larry Stevens.  
Circulation Manager—Ed Malik.

## Looking Backward in the ALMANIAN

To an observer of our campus, who is acquainted with the usual appearance of a college, the lack of memorials of all kinds is especially noticeable. In front of the Administration building is a large rock engraved 1898. In the ethical laboratory is a beautiful picture with the card of the class of 1904 in one corner. With these two exceptions, Alma has no memorials.

We hope that with the class of 1904 a precedent may have been established so that from year to year it will be regarded an established custom to leave some memorial to add to the things of interest at our college.

From the October, 1905, *Almanian*. (We also now have the granite sundial of the class of 1911, the table and vase of the class of 1910, and the Bruske Memorial Puddingstone.)—Editor's note.

## SOCIAL CALENDAR

### March

- 6 Friday—H. S. basketball tournament.
- 7 Saturday—H. S. basketball tournament.  
—Theta Tavern; Union; 8 p. m.
- 9 Monday—chapel, worship.  
—Drama club presentation "Macbeth" 8 p. m.
- 10 Tuesday—second presentation "Macbeth" 8 p. m.  
Faculty party, 8 p. m.
- 11 Wednesday—assembly: woodwind quintet.  
—junior division recitals 4 p. m.  
—A. C. A. 7 p. m.  
—choir trip to Detroit.
- 13 Friday—chapel: Phil Vance, organ recital.
- 14 Saturday—K. I. Luxury Liner, 8 p. m.
- 15 Sunday—Annual band concert: Tyler bldg. 4 p. m.
- 16 Monday—chapel, Alma singers.  
—bloodmobile.
- 17 Tuesday—bloodmobile.
- 18 Wednesday—A. C. A., 7 p. m.  
—College recital 4 p. m.  
—bloodmobile.
- 20 Friday—chapel: Dr. Harker.
- 21 Saturday—Phi "On the Town" 8 p. m.

### REQUEST COLOR SLIDES

Any students who have 35 mm. (slides) photographs, taken at the social opening of the Tyler student center are requested to let President Harker borrow them so that he may have copies made. The slides have been found to be useful in alumni relations and in the development program of the college.

## News in Brief

### Choir Goes to Detroit Next Week

The Alma College A Cappella choir will travel to Detroit next week Wednesday to sing at a "music night" at Westminster Presbyterian church.

They will sing a program of sacred music and two numbers combined with the two choirs of the church, "Go Not Far from Me, Oh God," by Zingarelli, and the Hallelujah from "The Mount of Olives" by Beethoven.

On its way home on Thursday, March 12, the choir will sing an assembly program at the Grand Blanc high school in Grand Blanc, Michigan.

### Woodwind Assembly Scheduled for Next Wednesday in Chapel

The Michigan State college Woodwind Quintet will present an assembly program for the Alma college students on Wednesday, March 11 at 11:00 a.m. in the college chapel.

Organized in the fall of 1948, this group has gained a wide reputation through its performances throughout Michigan and at such distant points as Washington, D. C., Chicago, Atlanta, and participation in the three-day Music Festival of the University of Georgia. Its membership is comprised entirely of men with professional experience before their appointments to the college staff.

The program on March 11 will include the following selections: "Quintet" by Ottmar and Gerster; Hosmer's "Fugue in C"; Rameau's "Tambourin"; Beethoven's "Adagio," wind quintet (a horn solo); Mozart's "Divertimento No. 8"; Bozzo's "Scherzo"; Tschaiowsky's "Melodie"; and Milhaud's **LA CHEMINEE DU ROI RENE.**

### Kellogg Company Has Openings for Business Ad. Graduates

The Kellogg Company in Battle Creek has announced that it has openings for graduates in business administration. Summer work opportunities for undergraduates are also available. Bulletins are available in the Placement office concerning these positions. If it is desired, interviews will be held on campus for those interested.

\* \* \*

Several teaching positions are open for seniors graduating with teaching certificates. The notices are posted on the second floor, next to the president's office. Students interested in applying for these positions, should see Mr. McCall in the Placement office.

Intellectuals should never marry; they won't enjoy it; and besides, they should not reproduce themselves. —Don Herrold.



President of the student council Robert A. Willits cuts a ribbon at the entrance to the ballroom-auditorium of the Jerry Tyler student center, officially opening the building to the use of Alma college students. Dr. and Mrs. Harker and President Nelson Ray of the senior class share in the ceremony. The student center was opened on Thursday, February 26, for the all-college dance. Over 500 persons were present to hear the music of Buddy Morrow's nationally famous dance orchestra.

## Nearly 1000 Attend Tyler Center Open House

The open house held last Sunday afternoon, March 1, at the Jerry Tyler student center was attended by nearly a thousand townspeople, students, and guests.

Student guides showed groups of people through the new building between three and six in the afternoon. President and Mrs. Harker, Deans Stielstra and Vreeland and members of the Women's Advisory Board acted as an informal receiving line. Punch and cookies were served in the auditorium by members of the student body.

Student guides were Bob Willits, Larry Stevens, Jim Johnson, Alan Bowman, and Barbara Bauer. Others who helped were Janet Armitage, Jeannine Moran, Carol Stevens, Elizabeth Smith, Delores Metcalf, Margaret Walker, Nancy Stockham, Sally Souders, Don Gordon, Bud Davies and Ron Black.

### ALMA RECORD

PHONE 13

### CHEVROLET C. L. GREENING & SON

SALES AND SERVICE

## "Theta Tavern" Creates Old World Atmosphere

A floor show, beer barrel, soft candlelight and checkered tablecloths will create a picturesque "Old World" atmosphere at the Theta Tavern tomorrow night, March 7, in the Tyler student center. Weeks have been spent in planning dance routines and costumes to make the dance a big success. One of the many unique attractions is the liquor card tickets signed Alf E. Theta.

"There is a Tavern in the Town" is the familiar theme of this big annual dance. The Tavern, first presented during the second world war, is one of the strongest traditions of Alpha Theta.

The decorations committee is composed of Mary Jo Frye, chairman, Barbara Wisniewski, Mary Menovske and Betty Lou Kolberg. Barbara Jones is chairman of the floor show committee, composed of Donna Leddy, Mary Ellen Splitstone, Barbara Lawrence and Alice Welsh. Refreshments committee, under chairmanship of Betty Houghtaling, includes Connie Hamilton, Joan Barber and Janie Butters. Ernestine Hebert, chairman, with Anne Gettle and Peggy Smith, form the costume committee. The advertisement committee is Rosemary Berger, chairman, Fran Booth, Allene Stolt, Mary Ellen Splitstone, and Alice Welsh.

Admission price is 50 cents per couple or 35 cents for one.

## Three Groups Pledge Total of 46 Members

Alma college's three social fraternities pledged a total of forty-six men this week. The Delta Gamma Tau group received twenty-one new members, Phi Phi Alpha, twenty, and Zeta Sigma, five.

The fraternities had a week of interesting activities planned for the pledges, recognized by everyone as "Hell Week." Formal initiation will follow the reign of terror. Delta Gamma Tau plans this year to hold a banquet for the new members. Zeta Sigma also has the tradition of a dinner for pledges, and each son is the guest of his father.

Members pledged to Delta Gamma Tau are Richard Beardsley, Thomas Becker, Robert Brown, Richard Burpee, Gordon Crimmins, Donald Drew, Robert DeStefano, John Koschara, Thomas Irvine, James Hill, Raymond (Bud) Miller, William Palm, Jerry Psocka, John Noud, Leroy Posey, Phil Smith, George Spriggs, Dave Stockham, James Swallow, John Ward, and Frank Williams.

Phi Phi Alpha pledges include George Fox, Bob Hamilton, Bill Luger, Bill Stuckey, Larry Nunn, James Hahn, Eugene Pattison, Bob Campbell, Phil Chisholm, Gerry Mayer, Harold Brock, Charles Parrott, Vernon Hansen, Dick Wallace, Ron Vliet, Norman Nesbitt, Jim Wager, John Laskarides, John Bridgewater, and Doug Williams.

New members of Zeta Sigma are Robert Lambert, John Kring, John Acton, John P. Ryan, and Bruce DePue.

### RUTH MORSE IS NEW DRAMA CLUB PRESIDENT

Professor W. A. Gregory has announced that Ruth Morse has been chosen as the new president of the drama club, subsequent to the resignation of Doug Gillesby, effective with the beginning of the second semester.

### SINGER SEWING CENTER

301 East Superior

1268 Phone

### MARTIN'S STORE, INC.

Quality Wear at Prices  
You Can Afford to Pay

### Sportsman's Center

Outdoor Man's Headquarters

306 E. Superior Street  
ALMA, MICHIGAN



Pictured above are the undefeated teams of Gene Schnelz and Bill Franch, top, and Lois Howell and Ron Nicoson, bottom.

## Scot Debaters Tie for Top State Honors

Alma college tied for the highest ranking in the league division of the Michigan Intercollegiate Speech League tournament of thirteen colleges held at Michigan State college on Saturday, February 28. The affirmative team of Bill Franch, Ionia, and Gene Schnelz, Hazel Park, were undefeated with wins over Hope, Wayne, and Calvin. The negative league team of Dave Cornell, Custer, and Walter Lovell, Detroit, defeated Ferris Institute and Michigan State Normal, while losing to Central Michigan. Gene Schnelz tied for the highest rating in the entire tournament among the 148 participating debaters winning a superior rating and certificate. The League division was composed of the best two teams from each of the colleges. No state championship is declared. Franch and Lovell won certificates for excellent debating.

Outstanding in the tournament division was the undefeated team of Ron Nicoson, Owosso, and Lois Howell, West Branch. They defeated Ferris Institute, Wayne, and Wayne II. The team of Cyrus Azimi, Teheran, Iran, and Don Darling, Lansing, defeated Western Michigan and the University of Detroit while losing to Wayne university. The Alma affirmative team of Ruth Morse, Detroit, and Peggy Thibedeau, Newberry, defeated Hope while losing to Calvin and Wayne. Mary Alice Cook, Royal Oak, and Homer Smith, Detroit, defeated Wayne while losing to Western Michigan and Calvin. Certificates of excellence in debating were awarded to Thibedeau, Howell, and Nicoson.

Participating colleges included Albion, Alma, Calvin, Central Michigan, Detroit Institute of Technology, Ferris, Hope, Kalamazoo, Normal, MSC, University of Detroit, Wayne, and Western Michigan.

## Band Presents Annual Concert This Sunday

The Alma Concert Band, under the direction of Professor R. E. Rufener, will present its Annual Winter Concert Sunday, March 15th at 4:00 p.m. in the new Tyler Auditorium. During the past months, the Band has been at work preparing a varied and interesting program. Included on this program will be Richard Adinsell's "Warsaw Concert," featuring Ron Nicoson as guest soloist.

Tickets will go on sale Friday, March 6, and may be purchased from any band member.

### Program

- The Vanished Army ..... E. Alford
- The Caliph of Bagdad ..... A. Boildieu
- Tres Jolie Waltz ..... E. Waldteufel
- Allegro Maestoso ..... G. F. Handel
- Lady of Spain ..... Tolchard Evans

### Intermission

- The Merrymakers March .... Paul Lavalle
- Warsaw Concerto ..... Richard Adinsell
- ..... Ron Nicoson, Pianist
- Larghetto ..... G. F. Handel
- Csardas ..... V. Monti

### CLARINET:

- Dalt Love
- John Kinner
- Ralph Falsetta
- Earl Hayward
- Don Howarth
- Larry Nunn
- Shirley Risser
- Roger Vance
- Karen Pertizprg

### Bass Clarinet:

- Phil Chisholm

### ALTO SAXOPHONE:

- Bill Willets

### Alice Welsh

- Ray Shamberger

### Tenor Saxophone:

- Jud Joyce

### FRENCH HORN:

- Jim Lester

### CORNET:

- Caroll Cummings
- Carl Biehl
- Joan Horn
- Bruce Reed
- Bruce McLain

### TROMBONE:

- Tom Minshall
- Dan Goodearl
- Jim Gordon

### BARITONE:

- Ray Maier
- David Wolansky
- Jim Hill

### PERCUSSION:

- Al Smiley
- John Bridgewater
- Irene Emerson

### FLUTE:

- Ann Humphries
- Mary Alice Cook

## Alma Graduate Directs Play at German Base



Dorothy Dugal, former Alma college student, now in Germany

WIESBADEN AIR BASE, Germany — Miss Dorothy Dugal, a former student of Alma college, will direct the Wiesbaden Little Theater Guild's next production "Two Blind Mice." This well-known comedy by Sam Spewak was a 1949 Broadway success.

An active member of the theatrical group since her arrival in Wiesbaden, Miss Dugal was instrumental in the Guild's recent reorganization. She also handled the publicity for this season's first production, "The Man Who Came to Dinner," which had a very successful run in the Wiesbaden area. The Little Theatre Guild's acting and directing casts are made up of air force officers, airmen, and civilian employees.

Miss Dugal is employed in Wiesbaden, Germany, by the office of the Adjutant General, United States Air Forces in Europe. Wiesbaden is located in western Germany close to the Rhine river and is the headquarters for all air force activities in Europe and North Africa.

Dorothy first journeyed to Europe in the summer of 1951, with Miss Dorothy Kasel of Alma, Michigan. Before accepting her position with the air force she traveled the continent extensively. Among the countries she visited were Ireland, England, Belgium, France, the Netherlands, Denmark, Italy, and Norway, where she witnessed the 1952 winter Olympics. She has also visited the Four-Power cities of Berlin and Vienna.

A graduate of the 1950 class at Alma college, Miss Dugal taught at the Harbor Springs high school during the 1950-1951 school year. She plans to return to the States in September of this year.

Life is not a spectacle or a feast; it is a predicament. —Santayana

**STOVALL'S STUDIO AND CAMERA SHOP**  
Headquarters

**DON ELSEA'S "Dairy Star"**  
Giant Cones, Malts, Shakes  
Hot Dogs — Hamburgs

**ALMA STATE BANK**  
SAFE, RELIABLE  
Your Patronage Appreciated

# Prof Profile . . . . .

by Roger Vance

## W. A. GREGORY HE AGREES WITH G.B.S.

Sunday being sunny, I pulled on my walking togs and briskly tramped the several miles into the country needful to arrive at Prof. William Alfred Gregory's rural digs. Foiling several sentry dogs, I made it to his cottage door and was greeted friendly by Helen, his wife, and the Prof himself, who was spread about the drawing room puttering with scrapbooks. The Prof is mighty silent when puttering with scrapbooks, so I sat quietly, scraping mud from my knees; quite soon the dinner bell sounded. Removed to the kitchen and armed with forks, the Gregorlys relived some of their past with huge enjoyment, managing to laugh just as loudly at their trouble as at their triumphs.

In their case, trouble got in the first good lick, when at four years (born: Williamston, Michigan, August 20, 1923) little William broke his leg during a traffic accident. In his subsequent weakened condition he also contracted infantile paralysis, which was not discovered until the cast was removed; the leg never knit properly.

Besting a typical public school education, he enrolled at Central Michigan State Teachers college with every intention of becoming a radio announcer. During his freshman year he met Helen Weeting in a music practice room, practicing music (her major). This impressed him. They became close companions, often singing together, and the August after their graduation they were married. While in college, William collected majors in both speech and social science. He was active in drama, in which his interest was growing. Much honor came upon him, his classmates voting him into the presidency of their frosh and soph classes, then into the presidency of the student council for two years; to round the thing off they voted him the most outstanding senior. And so into the wide world.

Both Gregorlys procured high school teaching jobs in Gladwin, Michigan, where they dwelled two years. His field was social science; but having had some summer theatre experience immediately after graduation, his interest shifted toward speech, and he sought a job in that field. One was forthcoming in Coopersville, where they went for a year. It was at this juncture that Mr. Gregory and Mr. J. S. Ryan (now of Alma also) formed the Lake Michigan Playhouse Summer Theatre at Grand Haven, each putting \$50 in the pot. After the first production they called a meeting at which the carefully kept books showed that they were bankrupt. This was remedied by throwing away the



Professor W. A. Gregory

books. Then they went ahead and had a successful season.

The summer theatre is the Professor's pet project, to which he has devoted every summer since that first one in '49. He owns it completely now, and is making it grow in prestige and value. Directly because of his success, four other summer theatres have been started.

Wanting to enter college teaching, he enrolled at Michigan State and procured his master's degree in theatre arts in one year less five minutes, as Helen finished the typing only 30 minutes before the deadline. His thesis was done on Bernard Shaw's "Heartbreak House," which, along with other work on Shaw done by him, render him a moderate authority on G.B.S. Speaking in this capacity, Professor Gregory states that he agrees with G.B.S. in saying that G.B.S. is probably the finest playwright since Shakespeare.

Graduate school was followed by one more semester of high school teaching in North Muskegon. In the middle of that year (51-52) he came to Alma college as a valuable addition to the speech department.

Over his after-dinner beverage, the good professor spoke feelingly of his satisfaction in college level teaching, its individuality, freedom, greater feeling and imagination. For if one thing peeves the Prof. (actually, several do), it is the stifling of imagination, and the things which contribute to it, such as censorship, and inflexible teaching methods. And as these factors seem more pronounced in secondary education, he is inexpressibly more at home in college work.

Dinner having been razed and the rub-ber-chayed away, the Prof and I piled into the Prof's car for a trip to town to inspect the first auditions to the **Macbeth** stage set. Where the road parallels the local waterway, Professor Gregory slowed the auto for longer enjoyment of the wild scene. This precipitated a discussion of kayaks and sailboats, which are a favorite preoccupation of us both. Upon arrival at the Ad Building, Prof became absorbed in the infinite problems of play production, his self-chosen woe; while he made certain matters clear to his stage crew, I drifted out of the door and made sail for the Union. There I brooded on things as they are.

## Literary Club Labels Itself "Parnassian"

At the last meeting of the Alma college Literary club, the name Parnassians was decided upon for the society. The word refers to Parnassus, a mountain in central Greece which is sacred to Apollo and the Muses, and which is symbolic of poetic inspiration and achievement.

The group met at the home of Professor Wilson Daugherty on Sunday evening, February 8. Douglas Gillesby reviewed James Thurber's **The Thirteen Clocks**. Donald Gordon read some of his poetry and an expressionistic play he has written. A discussion was held on modern and ancient drama and their relationship and influence on each other. Refreshments were served by Mrs. Daugherty.

Translations by Grant Gallup of several of Goethe's poems were presented as his entrance requirement for membership. The Parnassians voted in favor of accepting him into the society.

The next meeting of the Parnassians will be held on March 15. Earl Hayward will discuss French drama and Bill Farris will read selected poems he has written.

**Ed. J. Faeth Shoe Repair & Shine**  
All Work Guaranteed  
ALMA, MICHIGAN  
210 East Superior Street



SLACKS — TOP COATS  
JACKETS — SPORT SHIRTS  
SWEATERS — SUITS

March 7  
Union

**THETA TAVERN**  
Gala Floorshow, Dancing, Refreshments

35c - 50c  
8:00 - 11:30

# Who's Who

IN AMERICAN COLLEGES  
AND UNIVERSITIES



**BILL TAYLOR**

by Pat Shaw

Perhaps the ability to express oneself is one of the prerequisites for nomination to **Who's Who**, for this week's candidate, Bill Taylor, is another of the celebrities who is very active in the speech department. Speech is Bill's major, and he has been most active in the field since his entrance to Alma. He has been a member of the college debate team, which is always a worthy foe in the realm of verbal pugilism. His golden tones may also be heard wafting gently over the ozone in connection with the radio work he has done as a member of the cast of Alma's radio workshop, which broadcasts weekly over the local radio station, WFYC.

Bill is a member of Tau Kappa Alpha, national honorary speech fraternity, and of Phi Sigma Pi, Alma college's scholastic honorary.

Aside from his scholastic work, Bill has found time to take part in extra-curricular activities. He has been a member of Delta Gamma Tau fraternity for seven semesters, and has served as its president for a semester and was also treasurer for a year. He has been a member of the inter-fraternity council.

Although he likes to remain reticent about his campus job as a member of the kitchen staff at the chow hall, I think it should be mentioned. Perhaps his greatest claim to fame in this field was a handstand he tried last semester atop a hot stove.

Bill plans to enter McCormick seminary in Chicago next fall, to seek further education for his life's work.

## 129 Students Listed in Honor Roll

At the end of the first semester, 129 regularly enrolled Alma college students were listed on the honor roll, which includes all students who attained a B average.

Ten of these students received an all A (3.00) record for their scholastic work, including: John Corbett, Breckenridge; Stuart Friesema, Detroit; Lois Howell, West Branch; William H. Taylor, Jackson; Larry Waggoner, Boyne City;—seniors.

May Butrick, Alma; Raymond Mayer, Alma;—sophomores.

Betty Anderson, Schoolcraft; Janet Nunn, St. Louis; Eugene Pattison, Pontiac;—freshmen.

The complete honor roll for the first semester is as follows:

### SENIORS

John Corbett 3.00, Stuart Friesema 3.00, Lois Howell 3.00, William H. Taylor 3.00, Larry Waggoner 3.00, Douglas Gillesby 2.88, Earl Hayward 2.81, William Feimlee 2.71, Rosalie Williams 2.66, Clifford Cummings 2.58, George Lawrence 2.58, Allen Alexander 2.56, Ann Davison 2.56, Keith Nielson 2.50, James Pappin 2.50, Bruce Songer 2.50, Ernestene Hebert 2.47, Richard Wylie 2.40, Aubrey Clapp 2.37, Marianne Geerlings 2.35, Robert Willits 2.35, Richard Garrett 2.34, Barbara Lawrence 2.33, Mary Menovske 2.33, Kathleen Shaw 2.27, Dolores Combs 2.26, Anne Gettel 2.26, Raymond Carless 2.21, Dale Lawson 2.20, Joan Case 2.17, Paul Finchem 2.17, Donald Gordon 2.17, Betty Kolberg 2.13, Mary E. Splitstone 2.13, Betty Houghtaling 2.12, Patrick Shaw 2.11, Frank Martin 2.09, Verlan Dewey 2.07, Joanne Greenley 2.06, Maurice Martin 2.06, Robert Bacon 2.05, Ruth Morse 2.00, Eleanor Patz 2.00.

### JUNIORS

Gail Donaldson 2.83, Margaret Lomas 2.83, William Voska 2.83, Peggy Smith 2.77, Marion McDonough 2.71, Alice Welsh 2.70, Frank Williams 2.70, Alton Smiley 2.66, Roger Vance 2.60, Jane French 2.60, June Pruyne 2.50, Leonard Gadzinski 2.46, John Kinner 2.43, Winona Griswold 2.40, Maurice Arnold 2.37, Barbara Bauer 2.31, Jane Butters 2.29, Allene Stolt 2.29, Eldon Bailey 2.26, Marcia Risser 2.26, George Paxton 2.25, Thomas Becker 2.23, Spenceley Butters 2.20, Betty Fowler 2.20, Rosemary Berger 2.18, Nancy Leece 2.18, Grant Gallup 2.15, Philip Smith 2.14, Donna Kyes 2.12, Mary Jo Frye 2.10, Robert Hamilton 2.07, Arthur Brown 2.11.

### SOPHOMORES

May Butrick 3.00, Raymond Mayer, 3.00, Larry Park 2.78, Irene Emerson 2.73, Carole Cummings 2.68, Margaret Walker 2.60, Donelda Hamp 2.58, Beverly Ewing 2.53, Joseph Richert 2.53, Dean Remsberg 2.46, John Schubel, 2.46, Edna LaFleur 2.35, Jean Wallace 2.35, Robert Harrison 2.31, Doyle McIntosh 2.31, Suzanne Miller, 2.31; Harold Brock 2.30; Alice Erb, 2.26; Constance Koch, 2.26; Patricia Hewitt 2.20, Donna Leddy 2.17, Ronald Nicolson, 2.12, Willard Payne 2.12, Frances Booth 2.00, Lynn Crawford 2.00, Jerry Psotka 2.00.

### FRESHMEN

Betty Anderson 3.00, Janet Nunn 3.00, Eugene Pattison 3.00, Carolyn Blasius 2.87, Roema Lee Rohlf 2.86, Helen Thibedeau 2.81, Patricia Anderson 2.76, Sally Souders 2.76, Helen Joynt 2.68, Elfrieda Beyer 2.66, Judith Volk 2.58, Raymond Shamberger 2.53, Gerry Mayer 2.50, George Spriggs 2.43, Edna Williams 2.41, Kay House, 2.37, Richard Wallace 2.37, Margaret Shong 2.26, James Wagar 2.25, Clara Bryce 2.18, Raymond Miller 2.18, Gretha Immer 2.17, William Mazali 2.06, Marilyn Ross 2.06, David Stockham 2.06, John Acton 2.00, Margaret Lyda 2.00, John Noud 2.00.

## GELLER'S JEWELRY

*The finest in Diamonds—Watches  
Silverware—Gifts*

LOOK FOR THE STREET CLOCK

## An Old Scot Is 87



Dr. James E. Mitchell, who is known and loved by hundreds of former Alma college students, will celebrate his 87th birthday on March 8. Dr. Mitchell, Professor Emeritus of History and Political Science at Alma, entered the college as a student when the institution opened in 1887. Following graduation, he studied at Columbia university, the University of Chicago, and Cambridge and Oxford universities. He returned to Alma as professor of history and political science in 1897 and served in that capacity until his retirement in 1941. From 1912 until 1936, he served as Dean of the Alma College Faculty.

### STATE RESTAURANT

DROP INTO ALMA'S  
FAVORITE RESTAURANT

### FIRST STATE BANK OF ALMA

OLD—SAFE—RELIABLE

Serving this Community for 72 Years  
Your Banking Needs Always  
Taken Care of Promptly

MEMBER F. D. I. C.

## We specialize in . . .

- Wedding Gifts
- Crystal
- Silver
- China
- Appliances
- Linen

Come in and  
brouse around

**SAWKINS MUSIC  
& RECORD SHOP**

# THE ALMANIAN SPORTS PAGE

WALT ROMAN, Sports Editor  
HOWARD WILEY, Assistant



Lanky John Sawyer and Vern Hansen go up for a rebound in the Alma-Kalamazoo battle. The Scots lost the game 98-84.

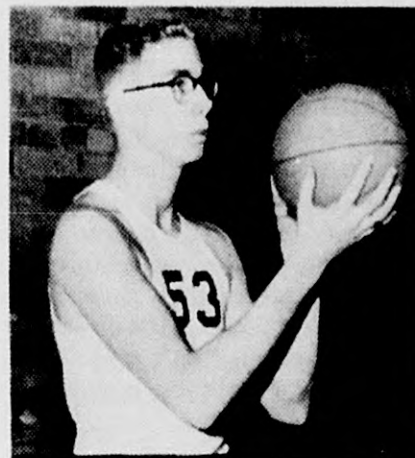
## Alumnus Appointed Trainer at Lafayette

Richard Carr, a 1950 graduate of Alma, has made a big step into the upper ranks of athletics by being appointed head trainer at Lafayette college, Easton, Pa.

Dick had been head trainer at Alma the four years he was here, and upon graduation he went to Indiana university for his Masters degree. While at Indiana he was assistant trainer for two years. In 1952 Dick was honored by being chosen as one of the two trainers for the All Stars during the contest with the Professional Football Champions.

## Scot Cagers

(Fifth in a Series)



BUD MILLER

by Howard Wiley

Bud Miller is an 18 year old freshman hailing from Holt, Michigan. Bud leaves an enviable record behind him at Holt high where he won letters in all four major sports; (3) basketball, (3) baseball, (2) football, and (2) in track. Bud is most proud of his participation in basketball and football while they romped to four straight Ingham county championships in each sport. In his final year of basketball Bud helped Holt reach the quarter finals in the state tournament, and was given honorable mention on the All-State team.

Raymond (Bud) also was an honor student while at Holt, and graduated with a high "B" average. He is now planning on majoring in business administration; that is, if Uncle Sam doesn't interfere somewhere along the way.

Bud is not the only member of the Miller family attending Alma college. He has an older sister, Sue, in her sophomore year, who can be heard yelling pretty loud whenever Bud scores a basket for Alma.

Bob ended this season the second highest scorer for the Scots, with 200 points, and will be valuable in Alma's basketball plans for next year.

## Scots in Doldrums of Basketball Season

by Walt Roman

The Alma Scots returned from Ferris Institute following another decisive defeat from the Big Rapids school by the score of 68-61. The Scots' record remains at four wins and fourteen losses. In the Ferris game the Bulldogs blasted out to a tremendous 38-16 edge by half-time, with Alma making a mere four baskets the entire period. While the Scots narrowed the margin in the last half, the task of pulling abreast of the high-flying Bulldogs was impossible. George Fox, high scoring guard, once again led the Alma surge with seventeen points, while forward Bud Miller banged home fourteen. Unable to twine the hoops, Alma journeyed home once again in defeat.

Preceding the Ferris game, the Scots lost one to Calvin at the Grand Rapids school 74-42. High point getter for the hapless Scots was "Stinky" Hansen with ten points.

Against Kazoo, the Scots again failed to come up to the standards of the fast breaking quintet from the Western Michigan coastline losing 98-84. Both guards, Gordon Macdonald and George Fox, boot-ed in eighteen points apiece to lead the wallowing Scots.

MARTIN'S STANDARD SERVICE

Lubrication and Wash

PH. 505

ALMA

"THE NEW SUPER"  
Open 24 Hours

315 East Superior  
Below Elks Club Bldg.

SUPER HAMBURGS

KEYS MADE WHILE YOU WAIT

Auto Accessories at

JOE F. DAVEY'S

Western Auto Store

CHURCH'S  
JEWELERS

The Store Confidence Built

GIFTS FOR BIRTHDAYS,  
WEDDINGS — ANNIVERSARIES

## College Deferment Test Applications Due Apr. 23

The national headquarters of Selective Service has reminded college students that applications for the April 23, 1953, Selective Service Qualification test must be postmarked not later than midnight, March 9.

The deadline is necessary to allow the administrators of the test, the Educational Testing Service at Princeton, N. J., time to process the applications and assign each applicant to the testing center, of which there are 1,000 requested by the student—or to the closest possible alternative center. This will be the last test given during the current academic year.

Application blanks may be obtained by students from the nearest local board. They do not have to return home to the local board which has jurisdiction over them.

The present criteria for consideration for deferment as a student are either a score of 70 or better on Selective Service College Qualification test or class standing among the male members in the upper half of the freshman class, upper two-thirds of the sophomore class or upper three-fourths of the junior class. Seniors accepted for admission to a graduate school satisfy the criteria if they are among the upper half of the male members of their senior class, or they make a score of 75 or better. Students already enrolled in graduate schools may be considered for deferment so long as they remain in good standing.

### SAUNDER'S MEN'S WEAR

Everything for Men  
207 E. Superior St.

### A-No. 1 Barber Shop

209½ E. Superior  
Alma, Michigan

LINDA GAY PASTRY SHOP  
WHERE QUALITY COUNTS  
FULL LINE OF BAKED GOODS

### Abbey Floor Coverings

*If your floor is shabby, it's a job for "Abbey"*

130 W. Superior

Alma

### ALMA HARDWARE

325 N. State

## Four Alma Speakers Enter State Contests

The state oratory and extempore speech contest of the Michigan Intercollegiate Speech League is being held at Ferris Institute, Big Rapids, today, March 6. Alma college will be represented in oratory by Peggy Thibedeau, Newberry, and George Spriggs, Detroit, and in extempore speaking by Bill Franch, Ionia, and Lois Howell, West Branch.

Miss Thibedeau will speak on "The Free Enterprise System," while Mr. Spriggs will discuss the implications of the topic "Facing Life." Miss Howell will speak on a topic concerning "The American Home," and Mr. Franch will talk on some aspect of "Cooperation versus Competition in American Life."

## Phil Long Sings His Senior Recital at Chapel

The music department of Alma College presented Phil Long bass-baritone, in a senior recital on Sunday afternoon, March 1, at four o'clock in the college chapel. Miss Frances Hughes, instructor in piano, was the accompanist for the program.

Phil, the son of Mrs. Irene Long of Mancelona, is well known both locally and throughout the state for his vocal achievements. This year he is the president of the Alma college A Cappella choir and has appeared annually as a soloist with the choir. He also directs the junior choir at the First Methodist church in Alma.

The recital was presented in partial fulfillment of the requirements for the Bachelor of Music Education degree. Phil is a student of Professor Eugene F. Grove.

Vocal selections on the program included five Biblical songs by Dvorak; Schubert's *An die Leier*; Greig's *Ein Schwan*; Brahms' *Wie bist du, meine Konigin*; "The Vision Fugitive" from "Herodiade" by Massenet; Griffes' "The Lament of Ian the Proud"; Mednikoff's "The Hills of Gruzia", an Irish melody arranged by Wekerlin, "The Minstrel Boy"; Quilter's "Go, Lovely Rose"; and Foster's "My Journey's End."

Mediocrity is excellence to the mediocre.  
—Joubert

## GREEK GAB

### KAPPA IOTA

We're all into another rushing season. We've given our tea at Mrs. Nelson's. Next on the agenda is the spread this Monday night after the presentation of *Macbeth*.

Had a little paint left after doing the room, so we decided to give the rampus room a coat, too. Now we really are a bright sunny yellow all over.

Oh, the new student center is a dream. The only trouble is, we want to dream all of our time away in it. It makes it twice as hard to get to our classes on time—or at all.

Don't forget the KI Luxury Liner on March 14. It promises to be one of the star events of the year. It's girl bid, so let's get with it, gals, and bring your date aboard; the liner leaves from the old union at 8:30.

## Alpha Psi Omega Admits Two Newcomers

The Alma college chapter of Alpha Psi Omega, national dramatic fraternity, has admitted Nancy Leece and Allene Stolt to its membership. They were formally initiated in a closed meeting held last week in the auditorium of the Tyler student center. Faculty members present were Professors Klomp and Gregory.

Eligibility for the fraternity is determined by a point system, credit being given for any work in the field of dramatics. Of the 50 points necessary for membership, a minimum of 25 points must be earned in production work, a minimum of 15 points in acting.

Other members of the fraternity are Ron Black, president; Doug Gillesby, vice-president; Ruth Morse, secretary; and Shirley Sherman. Prof. Gregory is the faculty adviser.

Until this year 100 points have been necessary for membership. With the lowered requirements, the chapter anticipates further enlargement of membership in the spring.

### WEE WASH IT

LAUNDRY — DRY CLEANING  
110 E. Center

MODERN LIBRARY BOOKS  
POCKET SEVEN DELUXE PERMA-BOOKS

35c TO \$1.25

TYPEWRITER RENTALS

VARSAITY SHOP  
126 WEST SUPERIOR