

To Feature Rock Festival

SNOW CARNIVAL STARTS FRIDAY

Plans for this years Snow Carnival, Countries Around the World have reached completion, and the event appears to be one of the biggest Snow Carnival celebrations in the 11 years of the Winter Weekend at Alma College.

Snow sculpture themes and hockey teams have been chosen, with snow sculpture construction beginning at noon

on Thursday, Feb. 19: judging will be upon completion of the sculptures at 4:00 p.m. on Friday. The hockey tournaments will also be held during the afternoon of the 19th.

A very unique experience in this years weekend plans is the rock festival, on Friday Feb. 20. Beginning at 7:30 p.m. and running through 11:30 p.m., the Rock Festival

promises such great bands as: S.R.C. Ormandy, Lonely People, Plain Brown Wrapper, and Virgin Dawn. A \$1.00 fee will be charged to all MIAA students. This Rock Festival, the first of its kind on the Alma College campus, promises to be a grooving time for all who attend.

Following the judging of the

snow sculptures and preceding the rock festival will be dinner served cafeteria style from 5:30-6:30 p.m., with the Coronation Ceremony and presentation of awards at 6:45 p.m. at the A3. During the Coronation Ceremonies, this years Snow Carnival Queen will be crowned by last years queen, Helen Bendle. The 1970 Queen

(continued on page 12)

Snow?!

The Almanian.

Alma College Student Newspaper

NON PROFIT ORGANIZATION
U. S. POSTAGE
PAID
PERMIT NO. 108
ALMA, MICHIGAN

Volume CLXXII Number 7

Alma College, Alma, Michigan 48801

February 17, 1970

APO Event To Benefit Africa Fellowship

FACULTY AUCTION SATURDAY AFTERNOON



Sue Ann Martz upholds the students' honor at Saturday afternoons' Faculty Auction.

TWO NEW MUSIC COURSES NEXT TERM

Two music courses being offered in the Spring Term for the non-music major are being geared to deal with immediate concerns. Music 320, Music in Worship, will have a seminar format coordinated by Miss Bellville, while Music 313, Music for the Listener No. II is a new course to be given by Dr. Russell. Both courses are offered for upper level credit.

The course Music in Worship will focus on recent developments in the relationship of music to religious observances. It will provide opportunities for the interested student, either individually or

The time, the place, the merchandise, and the two challengers are all set. For what? For this year's bigger than ever Faculty Auction, sponsored by Alpha Phi Omega, National Service Fraternity, for the benefit of the Africa Fellowship.

The time is 1:30 pm on Saturday afternoon (the 21st). The place will be in Dow Auditorium, and the merchandise includes items of the nature of an evening at Win Schuler's for two persons.

Auctioneers for the event will be Sue Ann Martz and Dr. Ronald Kapp. As usual, they will be competing to see who can bring in the highest amount for the goods they auction. Sue says she really wants to win this and so needs the support of her fellow students.

There is an added incentive for being winner in this event, in addition to wanting as much money as possible for the Fellowship, and that lies in the fact that this year will probably follow tradition with the winner auctioning off one last item: a shaving cream pie which can then be delivered to the losing auctioneer in a manner befitting the seriousness of that particular moment.

Thus for those of you who are Bio majors, or those of you who believe a Provost is

groups, to study means whereby music of various kinds can enrich the worship experience. It is anticipated that experimental orders of service will be developed and used in our own Chapel service.

(continued on page 11)

a person who always looks dignified and serious regardless of the circumstances, a suggestion would be to come early and bid high on the items which Miss Martz offers for sale.

On the other hand, if you believe that the faculty gets picked on too much of the time you can help do something about this by helping make Dr. Kapp's total as large as possible.

So for lots of fun and a chance to pick up some really valuable goodies at a very reasonable price and help out the Africa Fellowship, be sure to come to the Faculty Auction Saturday afternoon at 1:30.



Supporting the theory of faculty superiority will be Dr. Ronald Kapp.

Student Affairs Considers Optional Hours

Student Affairs committee considered the proposed plan which would give sophomore women the use of optional hours under the present system, until a better system could be implemented next fall at their meeting last week.

The plan, proposed by Student Council as an alternate interim proposal (the original interim plan was found unworkable by housing staffs), would give sophomore women key priveleges and ont require them to sign out. The time during which they could sign out a key would be from a half hour before per until 20 minutes to per, thereby maintaining Junior and Senior priority on keys.

At the meeting, a motion

made to accept the issue was defeated, after a long discussion of the issue.

Mr. Plough, Dean of Students, raised several questions concerning the proposal, including the problem of increased legal liability due to more keys in use, the problem of changing policy in mid-year, the question of whether the sophomore women actually wanted, and needed the prive-

(continued on page 12)

Bio Dept. Receives NSF Grant

by mike delp

A grant of \$6,080 has been awarded to Alma College by the National Science Foundation for the support of undergraduate research, under the supervision of the college's Biology Department.

The National Science Foundation, an agency of the Federal Government, established in 1950, sponsors scientific research and encourages and supports science education projects in the United States. Proposals for scientific experiments may be submitted to the NSF from any source. A vast majority of support proposals stem from colleges and universities, and their faculties. Proposals are considered and granted on the basis of the scientific impact of the proposal and its educational by-products in the field of the sciences.

According to Dr. Ronald O. Kapp, Alma College Provost and professor of biology, the NSF grant will support two summer ecological studies. One study will center on the effects of pollution on organisms, and the other will concern itself with the plant ecology of the College's MacCurdy Research Station near Vestaburg. Serving as a supervisor with Dr. Kapp will be Dr. Arlan Edgar, professor of biology.

This summer's studies will be the terminal year of a three year grant. In the past, Alma College has received NSF grants for such projects as pollen analysis, bud physiology, and invertebrate behavior.

There will be four student positions appointed in connection with this summer's ecological studies. According to Dr. Kapp, the competition is open to biology majors of private colleges and univer-

sities throughout Michigan and the United States. Selection will be based upon academic ability and the inclination to do scientific research.

CLASSIFIED ADS

FOR SALE

Amboy Dukes and Simon & Garfunkel new L.P.'s (we had them first). 9 different albums, John Mayall & blues breakers. All of SRC albums. We order anything you want, our records are completely guaranteed and ALL of our prices are close to or LOWER than discount stores. So buy your records from the store where you get fast and courteous service. THE RECORD HUT

SERVICE

Girls! SINGER rentals \$2.50 per week. Call Alma Sewing Center 463-3200

Need a Job?

Need a Summer Job?

Booklet Gives Aid in Preparing Photo Reports

When was the last time you read a report that made its point crystal clear? Chances are unless it was illustrated with photographs, the answer may be as hard to remember as that last written report. A new Kodak publication, however, should offer you aid if you are called upon to produce such a report.

"Photo Reports Make It Happen," was written for community action groups, civic groups, students, committee members, or anyone who wants to add the impact of photography to a report to "tell it like it is."

The 12-page pamphlet, illustrated (continued p 3, col 1)

See the Placement Office! Various Information Available

SOPHOMORE MEN... Can you use \$1,500.00 to help pay the expenses of your next two years of college?

See the Army ROTC counseling officer when he visits your school on the 25th of February 1970.

If you cannot wait until the 25th for details, see your Dean of Students office today.

The Alma College Young Republicans have announced that due to lack of student support and difficulty in scheduling speakers the remaining student unrest seminars have been cancelled. Larry Nelson, spokesman for the group, said they would try to present some of these speakers and debates on a less rigidly scheduled basis at later dates.



There will be a meeting of all those interested in planning a teach-in for Alma's campus this spring. The meeting will be at 7:00 in Dow 134 Thursday February 19th. This is a very good way to help fight pollution in a very concrete way; through education. Everyone interested is invited.

THE

KING

IS COMING

'nuff said

READ

THE

ALMA

Reminder

FOR THE

BEST BUYS ON

ALL YOUR

NEEDS!

ustrated with examples of some photo reports, tells how to plan, assemble and present the report for effective results.

Included in the pamphlet are tips for taking good illustrative photos, how to caption reports, and how to mount and display enlargements for display in traffic areas.

Free single copies of "photo Reports Make It Happen," publications AT-5; can be had by writing to Department 841, Eastman Kodak Company, Rochester, New York, 14650.

ODD BODKINS



how would you like to break into banking?



For an entree into the fascinating world of finance, legitimate, of course, come talk to the Detroit Bank & Trust man. He'll be on campus soon to tell you about the many career opportunities available to Business and Liberal Arts majors.



DETROIT BANK & TRUST

An Equal Opportunity Employer

letters to the editor

"Model" Linen "Service"

Dear Editor,

In my relatively short stay at Alma--I am a freshman--I have heard criticisms of some of Alma's institutions. Saga food, Union Board entertainment, sophomore women hours etc. have been among the chosen, sometimes criticised justly and other times without basis. I have my own opinions on these subjects which I feel have already been voiced by fellow students. One so-called service which I feel strongly about is Model Linen Service.

Model Linen, I feel, does not serve the Alma students to its capacity. I think the main problem lies in the distribution of the linen. In my dorm, Mitchell Hall, linen can be picked up at the switchboard from seven to seven-thirty on Wednesday evenings. Thus, a student has one half-hour in which he may pick up linen. This time period is kept very strict, in fact too strict. One Wednesday night

I became involved with an Econ chapter. I suddenly realized it was almost seven-thirty and that I must pick up my linen, costing between one and two dollars per week. By the time I walked to the switchboard it was about 7:31. Wouldn't you know it, the door was locked--right on time! I asked the switchboard operator to come to my aid but it was "beyond his power" to give me linen. Other people have also missed linen in one way or another. This has led me to form the following equation: One student who missed linen equals at least \$1.00 extra profit for Model Linen Service. What a boon to the student.

Also Model Linen seems to "forget" to supply the student with linen on some occasions. Almost always, these occasions are ends of terms or before mid-term breaks. Today, Wednesday, February 11, Model Linen did not issue linen, just as I predicted they would not to my roommate. This deprives the student who

goes home for mid-term of clean linen for three or four days, a substantial part of a week. The student who stays at the college for the break has to sleep in dirty linen for a week. This was also evident at Christmas, though a long break, where the student went without clean linen for five days.

One week, the distribution day was changed from Wednesday to Thursday. This gives the student who takes linen two chances to miss linen and one to receive it. I am also sure the student

does not appreciate various cigarette burns and excretory stains on assorted pieces of bedding. Sheets are oftendyed pink to cover imperfections. Model Linen should extend its distribution period longer than thirty minutes, supply its linen with consistency, and supply unblemished materials.

If the problems of Model Linen are not alleviated, it cannot appropriately be called a service and will not be living up to its name: model. Sincerely,
Mike Marusak

Student Behavior At Game "Irritating"

Dear Editor:

I found Wednesday night's basketball game with Kalamazoo to be a most trying experience. It was neither the team nor the referees who set my nerves on edge but rather a group of Alma College students. Although a mere minority of the spectators, they made me feel a deep sense of shame in being connected with this institution. Throughout those irritating one and a half hours some of our illustrious upperclassmen chided, mocked and scorned the referees, the commentator, the players and various onlookers.

These actions were juvenile and immature, hardly representative of good sportsmanship. It truly worries me when college educated people find the need to impress their peers or to have a good time at the expense of others.

Empathy--perhaps that is the key word for the solution of many of our problems. Sharon Hamel

any opinions expressed or implied are not necessarily those of Alma College, its students or its faculty



The Almanian



The Almanian is published weekly during the school year, September to June. Publication offices are located on the north side of Memorial Gymnasium on the Alma College Campus. All correspondence should be addressed: *The Almanian*, Alma College, Alma, Michigan 48801. Telephone: (517) 463-2141, ext. 234. Subscriptions: one year regular, \$5.00; alumni, \$4.00. Life \$75.00. All copy must be received at *The Almanian* office by 5:00 pm Friday for publication the following Monday.

- Editor-in-chief Thomas Shumm
- Managing Editor Michael Sullivan
- Business Manager Chris Fährmeister
- Feature Editor Reid Simons
- Campus Government Editor Mark Foster
- Information Services Editor Laura Worth
- Sports Editor Debby Beery
- Arts Editor Bob Camp
- Photographer Bob Camp
- Circulation Director Ruth Camp
- Reporters: Dee Gill, Jana Lunger, Carol Mitchell, Beth Robinson, Margo Siegfried, Craig Sommerville, Bob Spencer, Doug Trout.
- Typists: Dru Emery, Gloria Bowman, Patti Cowden, Kathy Sue Gnage, Dale Jody, Duke, Jenkel, Morris.

WASHINGTON'S BIRTHDAY SALE

LOOK WHAT BUYS!

ONE FIVE DOLLAR BILL WILL BUY ANY ONE OF THE FOLLOWING WINTER SPORTSWEAR ITEMS

SKIRTS - PANT SKIRTS - SLACKS
BLOUSES - SWEATERS - JACKETS
VESTS - JUMPERS - SHIRTS

Choose From Our Entire Stock - - - One Low Price! |

THREE DAYS ONLY

Gittelman's THURSDAY through SATURDAY FEB. 19-20-21

Alma - Mt. Pleasant - Ionia - Greenville - Hastings - Lansing (Frondor)

HANK'S BAR

Pizza

Chicken, Shrimp & Oyster Dinners

All pitcher beer-80¢

Photo I.D. Required

Pizza from **THE PIZZA HUT**

(across from the Strand Theater)

CALL 463-4184

10 Inch \$1.00 **14 Inch \$1.60**

Extra Items 20¢ **Extra Items 35¢**

WHEN YOU DON'T WANT TO GO OUT

1970 Snow Carnival Court



Jane Jensen



Debbie



Mary O'Dell



Sheryl R. Johnson



Jill Tyler

Carnival A Young Tradition At Alma

by margo siegfried

Contrary to popular opinion, Snow Carnival is not a very ancient custom around the Alma campus. It all began just eleven years ago on February 7, 1959 with Miss Sharon Duff, a sophomore described in the almanian as "a blond with green eyes, and majoring in Elementary Education" re-igning as the first "Snow Queen". At that time it was a new thing to Alma and brought with it many changes. It has

since become the most looked forward to weekend of the winter term and ranks with Homecoming and Campus Day. The first year saw some innovations. The artificial pond behind Gelston - what is now Newberry Hall - was frozen over to be used as a skating rink and let me tell you that some pretty fancy figures were cut in the ice that year. The first all campus snowball fight was held, names of the winners being lost to history.

Snow sculpting was initiated that year and some of the entries were highly original. Go take a look at back issues of the SCOTSMAN and see for yourself. A tug of war over the ice was also held. Something that almost made tradition, but not quite, was the Student-Faculty hockey game with a basketball or balloons as pucks and broom handles as sticks. The reason it is no longer in existence is not

continued on page 7

February 20th, 7:30pm

Virgin Sausa

Fresh peanuts, cashews, mixed nuts. We cook our own. Peanuts in shucks. Fresh roasted daily. All your party needs.

The Nut Shop

128 E. Superior
Alma, Michigan

ALMA SELECTED AS BASKETBALL CAMP SITE

ALMA- Two sessions of the Milwaukee Bucks' 1970 All-American Basketball Camp will be held on the Alma College Campus this summer.

Alma's Physical Education Center, one of the finest small college facilities in the mid-west, is the only Michigan site for the training camp which features coaching and playing personnel of the Bucks in addition to well-known college and high school coaches.

The two six-day Alma camps are scheduled for Aug. 6-15 and 16-22.

Similar sessions are scheduled at sites in Wisconsin, Iowa, South Dakota, Illinois, Indiana, Kansas, Minnesota, and Nebraska throughout the summer.

Director of the Alma camps will be John Weinert, head basketball coach at Ripon (Wis.) College. John Orr, head coach at the University of Michigan, will join the camp staff for two-day during each of the sessions.

Larry Costello, Bucks head coach with Milwaukee players and other members of his staff, including trainer Arnie Garber, will be on hand during the sessions to instruct and demonstrate for camp members.

Members of the camp staff for the Alma sessions will include Don Ashdown, East Lansing High School head coach; Wayne Hintz, head basketball coach at Traverse City High School and former Alma College varsity coach; Dalton Cantrell, Alma College assistant coach; and Paul Sharpe, varsity basketball coach at Baldwin High School.

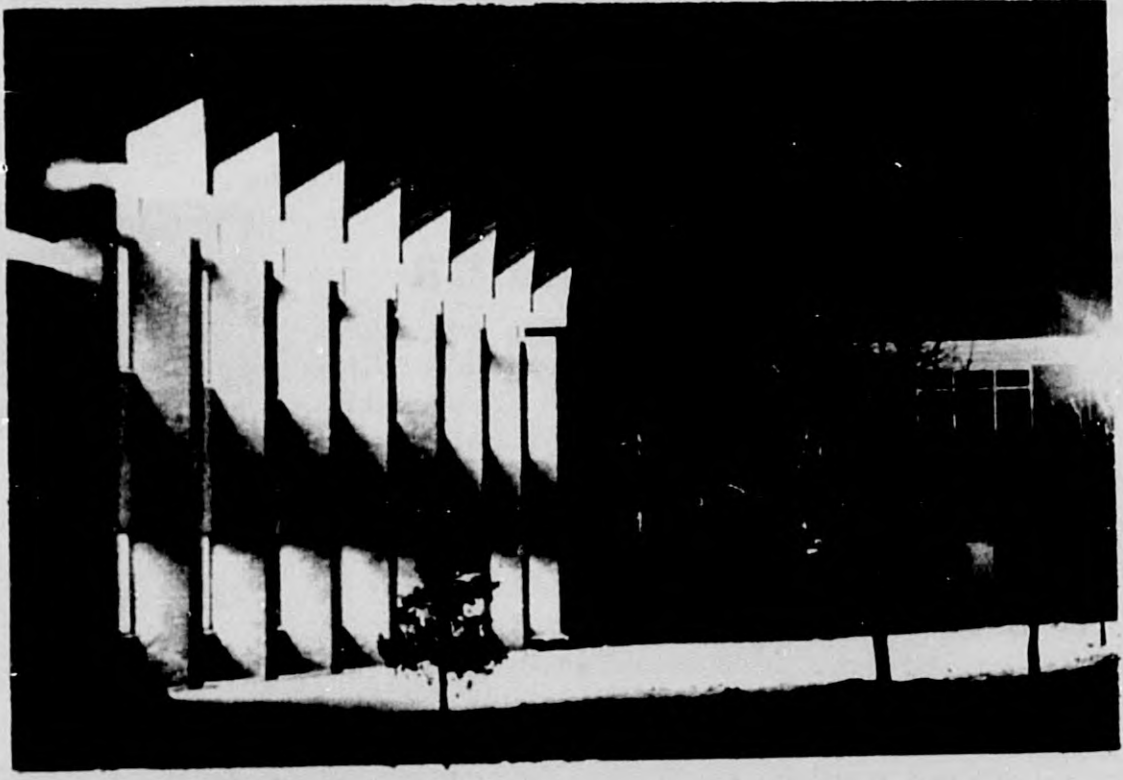
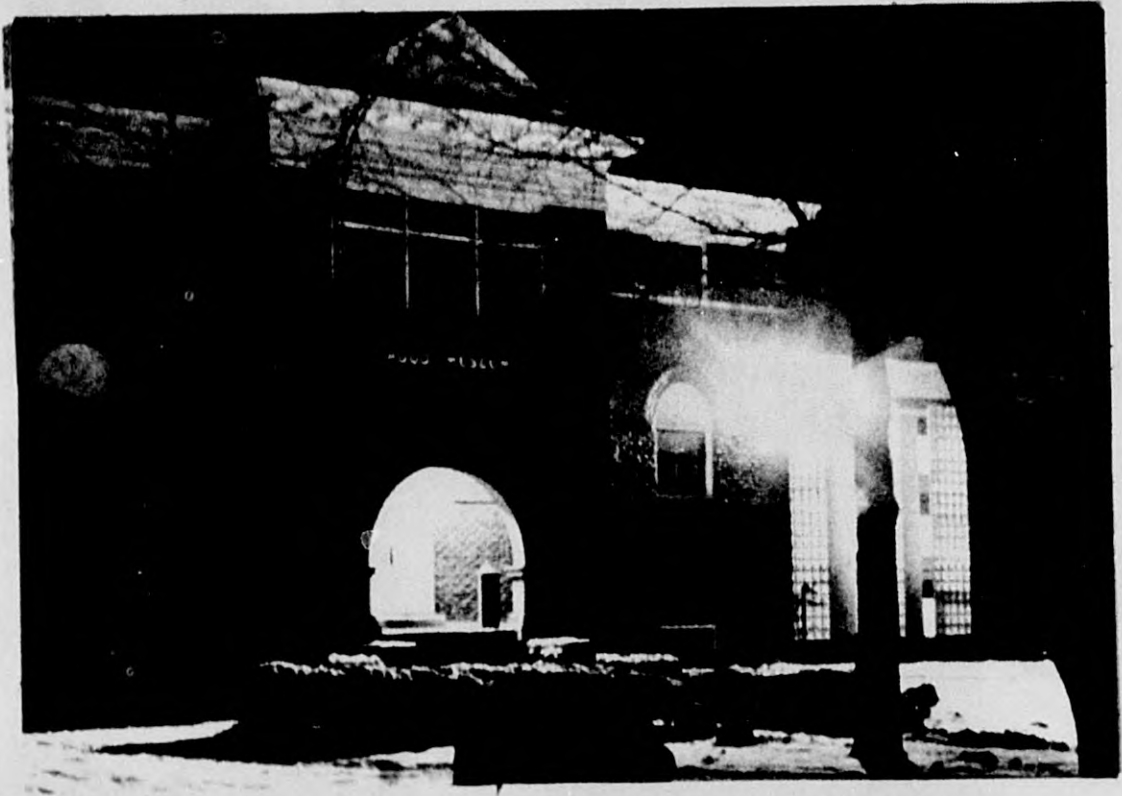
The camps, which emphasize individual attention, will involve four hours of small-group work each day, supplemented by lectures by staff members and guest coaches. Two rounds of games will be played each day to provide immediate practice on skills and techniques that are covered.

One hour each day will be devoted to other activities such as softball, track, soccer, touch football and tennis. A relaxed swimming program will be another camp feature.

Further information on the All-American Basketball Camp sessions at Alma College may be obtained by contacting Dr. Charles Gray, Athletic Director, Alma College in Alma Michigan.

Skiing may have been popular back in Gordion, Turkey, eight centuries before the birth of Christ. According to the February Science Digest, a figure drawn on a recently excavated wall in Gordion is wearing a pair of what look like skis.

February 20th, 7:30pm
Demands



A Winter Water



TRADITION cont.

parent, but it was probably because some parties objected to getting beaten. The third year saw a freshman queen and no snow. The fourth year, and up until 1965, the Carnival dance was sponsored by Alpha Theta Sorority. By the fifth year trophies were awarded for the snow sculptures. The sixth year brought extended per; a formal dance, which didn't last long as the next year brought ski clothes for the dance; and an all-campus movie.

One element which has been lacking as often as not in the past few years is the snow. What this year will bring is anybody's guess, but at this writing things look promising.

'Amberson's' Next on IFS Schedule

The International Film Series presents Orson Welles' magnificent ambersons Sunday evening, 22 February at 8:00 in Dow Auditorium. Welles is producer, director and narrator of this film for which he wrote the screen play. That he based on a Pulitzer Prize novel by Booth Tarkington, a novel about the decline of a midwestern dynasty born in the tradition of rugged individualism and faced with the changing socio-economic conditions of early

twentieth century. Two of its players won the 1942 "Best Acting Awards" from the National Board of Review, the awards going to Agnes Moorehead and Tim Holt.

Within three minutes from start, Welles' film and narration establishes the characters, the story-situation and their backgrounds. By skillful and inventive use of sight and sound techniques exploited in his CITIZEN KANE (1942), Welles transmutes the novel from Tarkington's page to RKO's screen. With results at least somewhat unfortunate, the commercial studio intruded into the editing of Welles' film footage, producing a work not wholly like the

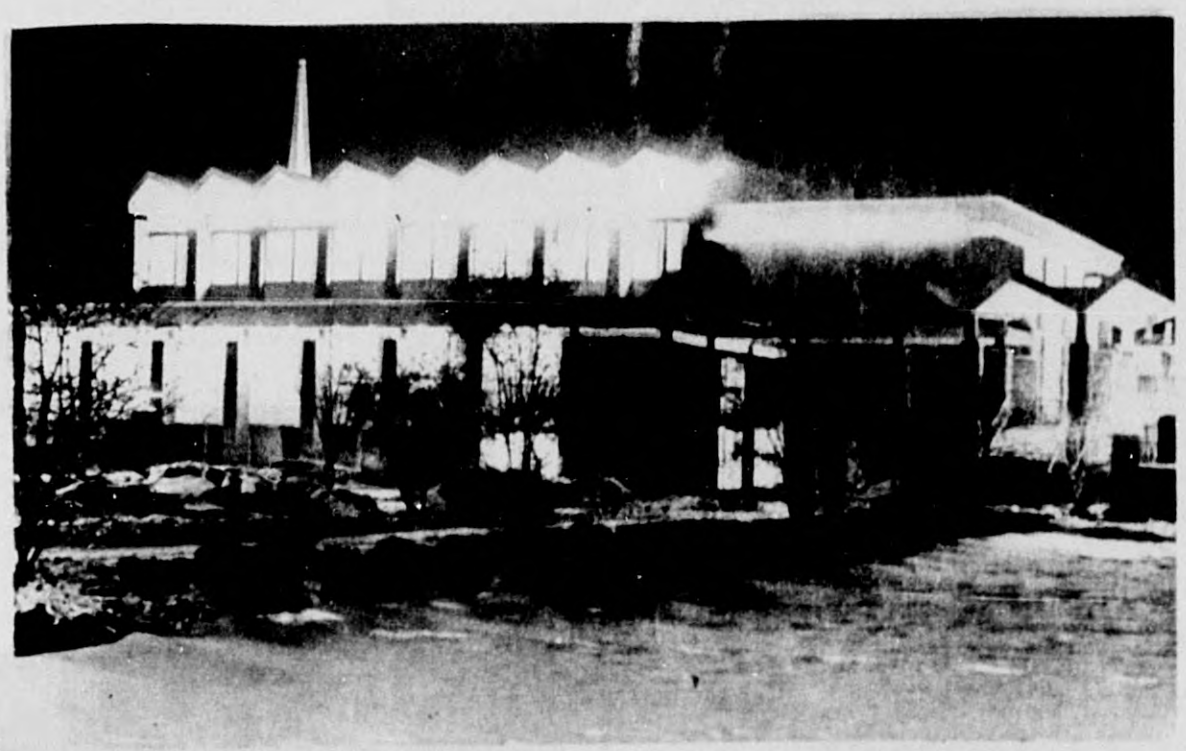
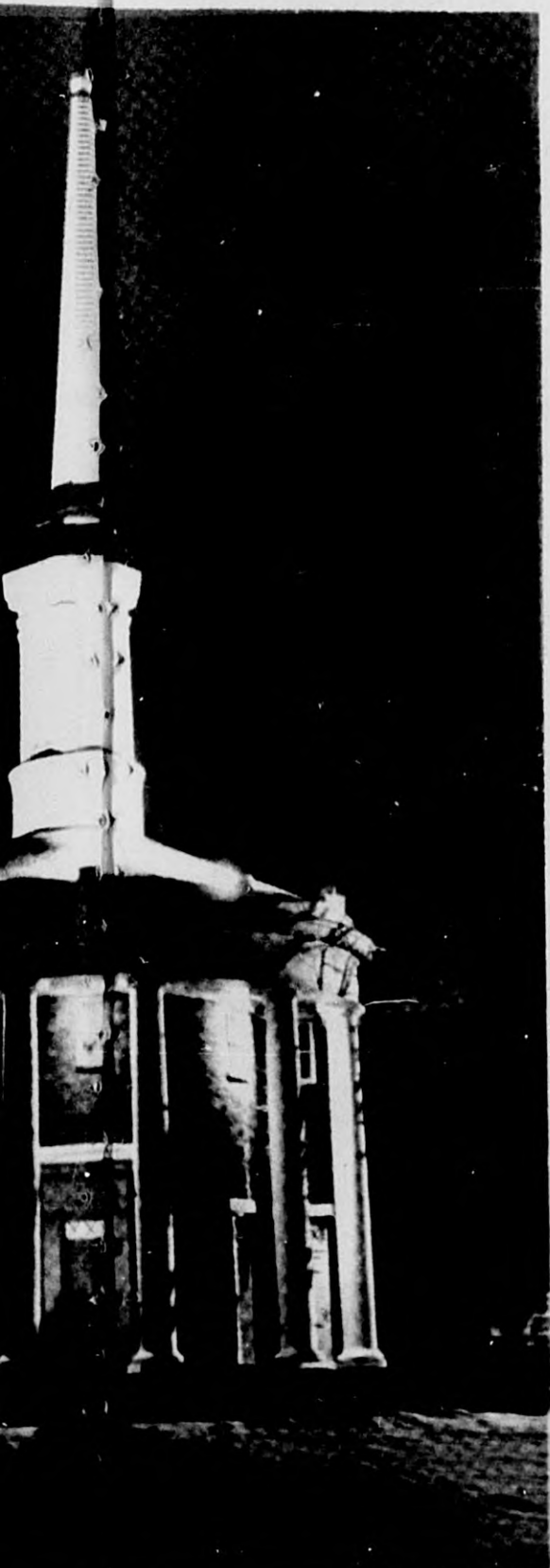
one Welles intended. Nevertheless, AMBERSONS emerged as an impressive film. About it Arthur Knight writes: "Although THE MAGNIFICENT AMBERSONS may look like a more conventional film than CITIZEN KANE, actually it is (continued on page 11)

Custom Framing
MILT TEDHAMS
 312 E. Marshal
 Alma
 463-1878

February 20th, 7:30pm
 Virginia Davis

February 20th, 7:30pm
 SPC

Waterland At Night



duo-tones by michael sullivan



S
R
C
O
R
M
A
N
D
Y
V
I
R
G
I
N
D
A
W
N
P
L
A
I
N
B
R
O
W
N
W
R
A
P
P
E
R
A
L
L
T
H
E
L
O
N
E
P
E
O
P
L
E

Fri. Feb. 20
7:00 to 12:30
Doors open at 6:30
General admission \$2.50
MIAA Students \$1.00
Tickets available at the door

317 STATE STREET
 ALMA, MICHIGAN

Penneys

Open Fri. nights 'til 9
 Other days until 5:30

THE
 FASHION
 PLACE

SPECIAL BUY!

PANTY HOSE

88¢ pr.



Seamless stretch panty hose of fine Quality Nylon with reinforced heel and toe. Proportioned lengths for sleek perfect fit. In suntan coffeebean. Buy several!

ALMANIAN ARTS

TARTAN TRIO IN ENJOYABLE DEBUT

The Tartan Trio, a faculty group made up of Fanny Harris playing the violin, Jack Bowman playing the clarinet, and Paul Russell playing the piano, appeared in recital Wednesday, February 11, 1970, in the chapel.

Khachaturian, born in Georgia, of Armenian parents, effectively blends folk melodies and nodal harmony in conventional classic form. He is as a gypsy who has learned to adapt his ends to the classic

continued on page 9

The first piece was a light, floating, almost dancelike suite composed by Darius Milhaud, a French composer. Milhaud transcribes many kinds of stimuli to which he is sensitive into musical expression. Gallic charm, frivolity, satire, and good humor are reflected in his music and especially in Suite pour violin, clarinette et piano.

Mozart is the author of the second work performed. Its expressive range and pungent timbre seem peculiarly suited to Mozart's personality. The piece is said to have been

February 20th, 7:30pm
All the Lonely People

Lounge

BOWL

right up your alley.

RATOT

LANE

er of M-46 and Wright

adv.

Boy, Saga -

I'm sure glad that
break was only 4
days long -

missed

your:

Soft Fresh Bread
Clean Silver(?)ware
Dry Trays

and

Cold Milk
Clean, Odor-free
Glasses
Crisp Lettuce

as well as

Cold Sandwiches
Sunday Hospitality
Any Kind of Raw Eggs
(Dodo, Goose, Pigeon,
Rooster?), Scrambled,
Fried or Cooked

- not to mention

your

Delicious Steaks
Fish (Well-done, of
course)
Breakfast, Lunch
Dinner Music
Convenient 1/2 hr. Sunday
Breakfast

&

of course

Chicken (w/pin feathers,
of course!)
Clean Tables
Pork

LOVE, JL

Semus Murphy Company Feb. 19

The Seamus Murphy Dance Company of New York will be presenting a five act program of modern dance at Alma College as part of the Fine Arts Series on Thursday evening, 8:30 pm, February 19, in Dow Auditorium. The public is cordially invited to see this extraordinary group perform. There is no admission charge and no tickets are required.

Mr. Seamus Murphy was lead dancer in the off Broadway smash hit "Hair". Mr. Murphy, only this past summer directed and choreographed an electric rock version of "Carmen" of which the San Francisco Chronicle wrote: "that it was an engrossing and fantastic theatrical experience which was unforgettable."

Mr. Murphy, who was born in Philadelphia in 1939, studied dance composition at the Julliard School in New York. As a dancer and choreographer he has appeared with the New York City Opera, in the New Choreographer's Concerts, at Jacob's Pillow, and with the New York City Opera Ballet, the Sophie Maslow Company, John Butler, Anna

TRIO cont.

form. This composition was probably the favorite of the audience.

Again, it is a shame more people do not or can not take advantage of the opportunities to hear excellent, worthwhile musical convocations. More careful attention to scheduling conflicts might alleviate this problem in part at least.



Seamus Murphy & Libby Nye in "And the Fallen Petals"

Sokolov, Glen Tetley, and Jose Limon.

The entire program to be presented has been choreographed by Mr. Seamus Murphy. "Forsaken" was created in 1964 as a dance interpretation of the music of Monteverdi. It is a dance of religious search and sadness and ecstasy. The genuine feel for dance pattern, found in the newer dances, is also here.

An oriental piece entitled "And Fallen Petals," was first performed in 1968, with the musical score of Chou Wen-Chung. It can boast of some truly lovely sculptural patterns for individuals duos, and group. "Manfire" with the musical score by Zvi Avni premiered on national educational television in 1968.

"Ionization" created in 1969 with music of Varese, was filmed for use in a television

Your Headquarters
for Gifts, Jewelry,
and Repairs

CHURCH JEWELERS
113 E. Superior

commercial for the Sylvania Color Television and was performed by the Seamus Murphy Dance Company. The Maryland Ballet Company commissioned "Daimon" the score for which consists of sounds and speech, — fragments of prayer, hymns, dialogue, poetry of Baudelaire which will be performed by the dancers themselves.

The highly versatile dance company, consisting of five dancers and Mr. Seamus Murphy will be performing in modern form the experiences of mankind as embodied in various cultural traditions.

READ AND USE

CLASSIFIED ADS

WOULD YOU

like to travel ? like to buy something?

like to have a GOOD meal for a change ?

THEN THE

FACULTY AUCTION

IS FOR YOU !

SAT, FEB 21st starting at 1:30pm

in DOW Aud.

Sue Ann Martz - student auctioneer(yay)

VS.

Dr. Ronald Kapp - faculty auctioneer (boo)

all proceeds to

AFRICAN FELLOWSHIP

Another Service of

Alpha Phi Omega

National Service Fraternity



Foster Delegate to General Assembly

When the General Assembly of the Presbyterian Church of the United States meets in Chicago this year, youth delegates from all over the country will be included as representatives for the first time. Among those youth attending will be Mark Foster, Alma senior from Farmington, Michigan.

As a Youth Advisory Delegate, Mark will be seated in the General Assembly with full rights of speech, but without vote, and will have the opportunity of serving on the standing committees during the conference, scheduled to meet 10 days in May. The purpose of the General Assembly is to plan and establish the general policies for the Presbyterian Church, such as church missions, religious education and the church's attitude toward social problems. It was for this latter concern that Mark first applied, for he is "interested in the church's role in society."

Mark first applied to be a delegate through his own minister, Rev. George Ramsey of the First Presbyterian Church of Farmington. After going through the church channels, his application was sent to the Detroit Presbytery where he was personally interviewed and selected from among candidates of the 103 churches represented in this presbytery. Rev. Ramsey said Mark's selection was largely a result of his active involvement in college, and he affirmed without hesitation that



Mark was "head and shoulders above everyone else" who applied. He will be officially delegated by the Detroit Presbytery February 24.

After the conference Mark will spend time relating his experiences and ideas of the meeting to some of the churches he represented. If the reaction of the Assembly is favorable to the Advisory Delegates, Rev. Ramsey hopes that full voting rights will soon be given to young representatives, thus giving youth a voice in their church's future.

t p s
Takes Pot Shots

Congratulations Spiro. You shut up the media very well. We sure don't hear much about the War, or the draft anymore. Not that the situation has improved any. It's just that when a man who has life or death power over a radio or TV station speaks, that radio or TV station listens to him.

Let me not, however, accuse you of misusing the power of your position. You've done so very much on your own. You've told th Great Silent Majority that their prejudice is A-OK and that minorities and other

"different" people should be the butt of all humor. You've stumbled and bumbled, and ended up as Mr. 3 in the USA-making yourself popular with your conservative firebreathing. Yes, very well done.

But there are some papers you don't control and some editors you don't impress at all. This paper is not governed by coercion and will speak as it sees fit.

You've got some of your little Spiros on this campus, and they would like to guide the paper in their way truth and light. However, your little Spiros are little men. unable to cope with the facts. Sorry, Spiro, but you and your emulators have only served to disturb me. You haven't controlled me.



The Fabric Shop

CAMPUS HEADQUARTERS FOR FABRICS

125 E. Superior

Alma, Michigan 48801

For the best of deals see

C. L. GREENING & SONS
Chevrolet & Buick

PIZZA!

Full Course and A La Carte Dinners

Dining Room

Carry Out service available



Phone 463-3881 for **pizza sam**
104 E. Superior



Your Favorite 8 Track Stereo

Tapes \$3.99 to \$6.27

Credence Clearwater Revival \$5.94

TOP 10 LP'S \$3.77 to \$4.77

Frijid Pink \$3.77



SRC Milestones \$3.77

The Best of Rod McKuen \$3.77

New Simon & Garfunkel Stereo LP—

Bridge Over Troubled Water

Only \$4.77

GIANTWAY'S

SOUND DEPARTMENT



For Better Record Buys

IFS cont.

a good deal more inventive-but in subtler, more impressive ways. ...Seen today, THE MAGNIFICENT AMBERSONS seems, if anything, more impressive than when it first appeared."

In a book about Welles, Peter Noble says about this particular film: "The story of the evolution of the proud family from arrogance into understanding was treated by Orson with great delicacy. The photography was superb, and Orson's sense of period and obvious understanding of architecture and design were strikingly apparent. ... Welles brought realism into every scene and used perspective in sound as well as perspective in photography, something rarely attempted before."

General admissions tickets will be available at the door

MUSIC cont.

Resource people experienced in contemporary trends in worship will be brought in. Faculty members in related fields will participate. There will be trips to nearby services to observe other branches of religious faith. Seminar sessions will be used wherever possible to allow small groups or individuals to study specific aspects of contemporary and traditional worship, and the relation of music as an art to the worship service.

The course Music for the Listener No. II will be centered around concerts by the Chicago Symphony Orchestra at Michigan State University at Michigan State University on May 4, the Saginaw Symphony with George Sandor, pianist, April 26, and other concerts to be presented locally.


ALMA V & S HARDWARE
 Make Us Your First Stop
 For Everything In Hardware
 325 N. STATE STREET
 ALMA, MICHIGAN 48801

Gratiot Players Present "The Natural Look"

The Gratiot County Players are approaching final preparations for their second production of the season "The Natural Look" by Lee Thuna. The modern comedy will be presented at the Kensington Palace Theater in St. Louis on February 20, 21, 22, 27, 28, and March 1.

"The Natural Look" is being directed by Alma College student Keith Hershberger as an Independent Study in the department of Theater. Many area residents remember Keith for his outstanding performance in "The Imaginary Invalid" produced last year by the Players.

The forthcoming production will feature Alma College students Janet Graham, as Reedy Harris, and Craig White, as Dr. Bernard Harris. Also included in the cast are Alma College students Ruth Crawford, John Kunik, and Mike Garn. In addition, Leilani Wolfgang, a secretary at the College plays the part of Edna.

"The Natural Look" is a modern day comedy that revolves around the problems faced by a young married couple. The basic theme is doing what comes naturally and not attempting to put on anything.

Advance tickets can be purchased at Ken's Party Store in St. Louis. The tickets are \$2.00 for adults and \$1.00 for

ally. The class will attend these concerts after having studied the works on the program in depth. Student rates will be available for the tickets and transportation will be provided. Works to be studied include the Brahms Academic Festival Overture, a piano concerto by Frank Martin, Rachmaninoff's Rhapsody on a Theme by Paganini, Prokofiev Symphony No. 5, Handel Concerto Grosso, Bartok Third Piano Concerto, Wagner's Meistersinger Overture and others.

This course will assume knowledge of the rudiments of music, such as note reading, etc., and listening experience.



Janet Graham and Craig White (left) are featured in the forthcoming Gratiot County Players production which was directed by Keith Hershberger. Photo by Chris Olson.



NOW At HARKEN'S

HOME BAKED BREAD & PIES

Complete Line Of BARBEQUED CHICKENS, RIBS, HAM POLISH SAUSAGE

We Sell Only U.S. TOP CHOICE WESTERN STEER BEEF • ALL STEAKS CUT TO ORDER

DELICATESSEN ITEMS for Parties & Weddings Full line of KNOTTS BERRY FARM Preserves & Dressings

HARKEN'S SUBURBANETTE

M-46 & U. S. 27 - Alma • Phone 463-3362

• Retail Package Liquor Dealer • COLD BEER & WINE OPEN DAILY 9 to 11 Including Sundays



Try Betty Botter's Better

Luncheon Special

Chicken, fries, & drink. only 69¢



CHICK-N-JOY

"Chickenburgers!" Chicken salad sandwiches, Super-burgers!

Phone 463-9040

WEEKEND ACTIVITIES

Thursday, February 19

12:00 Noon - Begin Snow Sculptures - "Countries Around the World"
Afternoon - Hockey Tournaments - Wright Avenue School Rink

Friday, February 20

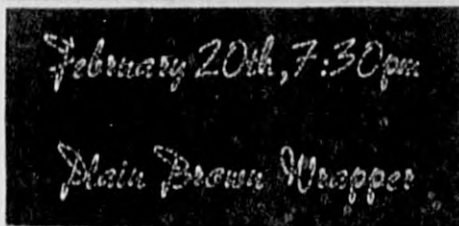
4:00 pm - Finish Snow Sculptures - Judging
5:30-6:30pm - Dinner Cafeteria Style
6:45 pm - Coronation Ceremony & Presentation of Awards - A³ (Nightclub)
1970 Snow Carnival Queen

7:30pm - Rock Festival:
-All The Lonely People -Ormandy
-Virgin Dawn -SRC
-Plain Brown Wrapper
\$1.00 MIAA Students

7:15 pm - "Harper" - Dow Flick

Saturday, February 21

1:30-3:30 - Faculty Auction - Dow Aud.
3:30-4:30 - Snow Games
8:00 pm - Basketball game; Home With Calvin
9:30-12:30 - Snow Carnival Dance Featuring "Leaves Of Grass" - Free Admission
Extended Per Until 2:00 am
Ski Attire!



There seems to be no such thing as peaceful assembly anymore. And those who "march for peace" appear to be the most violent of all.— H. F. Doherty, The Cavalier County (N.-Dak.) Republican.

DOUD DRUGS

"The Friendliest Drug Store in Town"

Phone 463-1796 - ALMA

Special this week.....
Tussy lipstick, regular \$1, now just 2/\$1.00

101 W. Superior

STUDENT AFFAIRS-cont. Information she felt freshmen women should know concerning the policy.

A sub-committee was created which will prepare answers or replies to these and other questions and re-submit the proposal to the committee. Hopefully, the proposal can be dealt with expediently enough to be presented to Executive Council by the next meeting on February 25.

THIS WEEK'S MEETINGS

Wed. 7pm: Student Council Library Ground Floor
Thurs. 2pm: Student Affairs sub-committee to prepare answers to questions re: sophomore key proposal. PE Conference Room.

SNOW CARNIVAL cont.

and her court will then reign over the remaining Snow Carnival festivities.

Saturdays activities plan to be equally exciting, with the faculty auction starting things off at 1:30-3:30 p.m. in Dow Auditorium. Following the faculty auctions, till 4:30 will be snow games, with the entire student body invited to participate. Winding up the week-ends festivities, will be the Snow Carnival Dance, beginning at 9:30 p.m. The featured "Leaves of Grass" will play for your enjoyment until 12:30 a.m., with admission 'free' for this dance. Students are asked to come dressed in ski attire, and per will be extended for this night until 2:00 a.m.

Kampus orner

Open: 11-12 midnight, weekdays. 11-12:30 a.m. on Friday and Saturday. Sunday from 12 to 12. Cold beer and wine to take out.

CAMPUS

TWIN INDOOR THEATRE • MISSION AT PRESCOTT • NEXT TO THE EMBERS

1 2

TONITE 7 & 9:25 **LAST 2 DAYS** TONITE 7:15&9:30

The most explosive spy scandal of this century!

ALFRED HITCHCOCK'S

TOPAZ

A UNIVERSAL PICTURE TECHNICOLOR

GOLDIE HAWN

WINS THE GOLDEN GLOBE AWARD FOR BEST SUPPORTING ACTRESS AS TONI!

Walter Matthau Ingrid Bergman
Cactus Flower

STARTS FRIDAY

CONSIDER THE AWARDS

BEST SUPPORTING ACTRESS
DYAN CANNON
—New York Film Critics

BEST SCREENPLAY
PAUL MAZURSKY and LARRY TUCKER
—New York Film Critics
National Society of Film Critics

Bob & Carol
Ted & Alice

NATALIE WOOD • ROBERT CULP (BOB & CAROL & TED & ALICE) ELLIOTT GOULD • DYAN CANNON

FLY INTO 20 YEARS OF ALASKAN WILDERNESS!

HUNT FOR THE BIG ONES!

THIS IS MY ALASKA

EXCITING FAMILY ENTERTAINMENT FROM MASTER ALASKAN GUIDE BUSTER SHEBAL

SUGGESTED FOR GENERAL AUDIENCE

COLOR by DELUXE