

Welcome Home

Dr. Swanson !

Dr. Swanson arrived home about 3:30 Saturday afternoon. The best wishes of all are extended to him during his recovery.

The Almanian.

ALMA COLLEGE STUDENT NEWSPAPER

NON PROFIT ORGANIZATION U.S. POSTAGE PAID PERMIT NO. 108 ALMA, MICHIGAN

Volume CLXXIII Number 6

Alma College, Alma, Michigan 48801

April 27, 1970

PHILIDOR TRIO PERFORMS WEDNESDAY

The Alma College Lecture-Fine Arts Series presents the Philidor Trio, an acclaimed group, in a program of Baroque music in the Italian style on Wednesday, April 29th, in Dow Auditorium. At 4:00 p.m. they will conduct a discussion/demonstration of music performed in the Italian style. A concert of Baroque music in the Italian style will be performed at 8:00 p.m., also in Dow Auditorium. The public is cordially invited to attend both events. There is no admission charge and no tickets are required.

The Philidor Trio has delighted audiences throughout the United States and Canada since 1965 with their concert of Baroque music. Combining painstaking scholarship with vocal and instrumental virtuosity, their performances vividly recapture the musical world of the courts, chapels, and salons of 18th century Europe.

Each of the performers has been a member of the New York Pro Musica for several years. Thus they bring to Baroque music an easy familiarity with earlier styles, combined with the consummate mastery of seasoned concert artists.

Their programs are an attractive mixture of familiar and neglected works, carefully designed to illuminate a specific style or period. The use of authentic instruments of the period and informative program notes bring to audiences a deeper understanding of the past. Yet the emphasis is always on the musical experience which transcends historical barriers of time and place and speaks intimately and directly to today's audiences.

Elizabeth Humes, a native of Connecticut attended Skidmore College, and toured Europe with the College Chorus as soloist. At the Hartt College of Music she received her Bachelor of Music, magna cum laude. In New York, Miss Humes has sung with the Robert Shaw Chorale, the Riverside Chamber Singers, the Cantata Singers, and is a member of the New York Pro Musica.

Shelley Gruskin, a New Yorker, received his Bachelor of Music from the Eastman School of Music, where he was the flute student of Joseph Mariano and played two years with the Rochester Philharmonic. After a season with the NBC Opera Orchestra, he turned his attention to early music and instruments. He has taught at the New York College of Music, is presently on the faculty of the New England Conservatory of Music, and plays with the New York Pro Musica.

Edward Smith, from Wisconsin, received his Bachelor of Music from Lawrence College. He was awarded the Fulbright Scholarship to Italy for the study of composition with Luigi Dallapiccola. He was a student of Ralph Kirkpatrick at Yale University. After teaching at the University of Illinois, he returned to New York Pro Musica of which he was a member from 1964-69. He now teaches harpsichord at the Hartt School of Music at the University of Hartford.

The Philidor Trio was formed in 1965 by these three musicians who have performed together regularly with the distinguished New York Pro Musica. Their objective was to explore and bring before the public music from the 17th and 18th-centuries for soprano voice, flute or recorder, and harpsichord. Much of this literature and many of its composers are unfamiliar, even to dedicated enthusiasts of baroque music, and the Trio has had the pleasure of discovering many beautiful pieces that have lain unperformed for centuries. Among lesser-known composers whose works they have revived are: Marais, Campra, Morin, Pepusch, and Bononcini; and they have done unfamiliar works by such established masters as Francois Couperin, Purcell and Handel.

Despite the apparent restrictions imposed by the combination of instruments and voice, their repertoire covers a vast range of styles and forms, from most of the countries of Europe. Their practice, however, is to be rather restrictive in programming, so as to present "in depth" several aspects of a single style, composer, or period.

Whenever possible, the music chosen is prepared for performance from original sources (manuscripts or early editions) and the necessary additions, such as embellishments are realization of the figured bass, are supplied by the performers themselves.

Ann Philidor (1681-1728) initiated the first series of public concerts of sacred (the "Concert Spirituel") and secular (the "Concert Francois") vocal and instrumental music in France. Some of the cantats performed by the Trio were heard frequently in Philidor's Concerts.

Community Government Applications

Applications are now being accepted for all student positions on Community Government committees. Send a letter of application to Chris VanSickle, TKE House if you are interested in becoming involved in next year's Community Government system. Please indicate which committee(s) you are interested in. You may apply to as many committees as you wish. These applications must be to Chris by this Wednesday evening.

Our Community Government system can be viable and effective only if interested and enthused students are on our committees. Few colleges offer their students opportunities to participate in the origination, development, and enforcement of policies and activities as Alma. Take advantage of this opportunity and become a 1970-71 Community Government member.

TRASH FIRE IN NEWBERRY

Fire broke out at Newberry Hall at 10:00 Tuesday morning in the dorm's incinerator room. There was no damage to the dorm and no one was hurt.

Monday night a girl's room had been papered (stuffed with crumpled-up newspapers) as a prank. The next morning, when Mr. Jake Fisher opened the incinerator door to check the progress of the burning, flame jumped into the room, igniting the newspapers which had been placed in the incinerator room for disposal. When the room became hot enough, the automatic sprinkler system went on.

The smoke which traveled up the stairwells alarmed the girls and Sue Hibbert, who was babysitting for Mrs. Rowe, pulled the fire alarm and called main switchboard to report the fire.

Martha Unkrich, dorm fire marshal, was not at the scene. When Sue Hibbert learned of the minor nature of the fire, she went back in to make sure people were getting out. They were not. Some were still getting dressed and others were going back in for books. According to Mrs. Rowe, there was a poor response to the fire alarm.

Because the fire took place at 10:00 in the morning, no one could make use of the night sign-out sheet to determine who was in and out of the dorm. This is the reason Dean Rentz requires upperclass and sophomore women to sign the register list on Thursday-Sunday nights. Mrs. Rowe has estimated that 3/4 of the girls were out of the dorm.

Fire protection in Newberry Hall includes strategically placed sprinkler systems where fires might break out, and fire doors in the hallways. According to Mr. Fraker, there are no outside fire escapes because the indoor stairs are made of steel.

SENIORS....

Midland Studios will be on campus this coming Tuesday, April 28, from 7:30 to 9:00 p.m. in the booth at Tyler Auditorium. This should be their final trip to Alma. Pick up your orders at this time. Make sure that they know which proof you have done on for the Scotsman, so that you may have your picture included in the senior section of the yearbook.

Also, the winner in last week's vote for Senior Gift was the donation to the provost's Fine Arts Endowment. We will have approximately \$300-\$325 in the class treasury to donate, so the rest of this term, so stay tuned and fire if you would like to increase this amount with up for June 15.



The talented Philidor Trio is composed of (from left) Edward Smith, Harpsichord; Elizabeth Humes, Soprano; and Shelley Gruskin, Baroque Flute and Recorders.

KLUGH PUBLISHES STATISTICS TEXT



Klugh

A textbook, Statistics: The Essentials for Research, by Dr. Henry E. Klugh III of Alma College is being published this month (April) by John Wiley & Sons, Inc.

Dr. Klugh, professor of psychology at Alma, has been a member of the college's faculty since 1955. He is a graduate of Geneva College and holds M.S. and Ph. D. degrees from the University of Pittsburgh.

A native of Harrisburg, Pa., he has written approximately 20 articles for various psychology journals.

Dr. Klugh is a fellow of the American Psychological Association and a member of the Psychonomic Society, Sigma Xi (national scientific honor society), Phi Eta Kappa, and Psi Chi (national honor society in psychology).

His new book was written for one semester courses in statistics normally required of students majoring in behavioral sciences, particularly in psychology or education.

For a majority of these students this course is both introductory and terminal since they have had little college level mathematics and no statistics, and they probably will not have further work in statistics unless it is required in graduate programs.

The purpose of the book, according to Dr. Klugh, is to present clearly and concisely the logic and methods of calculation for statistical techniques most commonly used in the behavioral sciences within the restrictions of a one-semester introductory course for mathematically unsophisticated students.

Dr. Klugh and his wife, the former Barbara Jones of Pittsburgh, live at 1006 Iowa Street in Alma. They have two sons, Harry, 12, and Thomas, 8.

THE LIGHT SIDE THE DARK SIDE by dick gregory "Price of Silence"



It is at once odd and sad that both blacks and whites in America today are just beginning to realize the high price one must pay for the privilege of apathy and silence.

In the black community today, one hears the repeated observation, "It looks like this country is fixin' to practice genocide." That observation merely illustrates that ignorance knows no color distinction.

One must pay a high price for being a friend of oppression, and when the silence is broken in the name of justice, the oppressor will always seek to restore it by repression and imprisonment.

realization that not one of those falling bombs was labeled, "For bad Germans only."

White folks in America are just beginning to fully realize the terrible price one must pay for silence. Twenty years ago, when the crime syndicate was restricting its dope pushing activity to black ghettos, black parents cried out to white America, "Please stop those syndicate hoodlums from pushing reefer and heroin to young black kids."

Now it is white America's turn to live with the tragic results of an earlier silence. Newspaper editorials and magazine feature stories are finally recognizing the terrible problem of narcotics--now that white kids are becoming addicted.

It is also ironic that dope addiction has traditionally been a problem only in the most impoverished black communities. Middle and upper middle income black families, those who benefited from higher education and good jobs, seldom had to worry about their kids being hooked on dope.

poverty stricken, uneducated black folks.

Now that it is white folks' turn to be plagued by the horrors of dope addiction, it is the children of upper income families who are getting hooked.

When the tables of history turn, those who have been silent cannot seem to comprehend the consequences of their silence. For years, white folks stood by in silent approval as buses were used to transport white kids and black kids in the interest of maintaining segregated schools.

President Nixon extols the virtues of the silent majority and in his inaugural address urged the nation to lower its voice. Vice President Agnew condemns loud voices of protest and Attorney General Mitchell tries to silence them.

DILEMMA by cedric franklin

"Goodnight Maria"

Maria was nine years old when I was a sophomore at high school, and she was a pretty, innocent little thing with long black hair hung like straightened hair down her back.

Maria was as bright little girl and sometimes she'd come over to my house to, as she would call it, "help me with my homework."

About twenty minutes after it began, I decided I would go over and see the Songfest in Tyler last week. I took a shower first, washed my long, thick hair, whistled a song to myself.

As it turned out, there were a lot of people at Songfest, and I was too late to get a seat inside the auditorium. Thanks to the foresight of some union board technician, though, I was able to watch the program over closed circuit T.V.

Well, the thing I am worried about now is the fact that, ever since that night, I've been spending a greater and greater amount of time watching the ordinary T.V. in the union.

I am reminded now of one day early this term when I was walking through Reid-Knox and was clumsy enough to drop a

Mother was as pretty as daughter, and you could hardly tell that she was on A.D.C. and had seven other kids to take care of during the day. I remember one time when I climbed the creaky stairs that led to Maria's home on the fourth floor of a rusty overcrowded tenement, when one of the kids came running down to ask me if I would tell him a story about the "candy and gingerbread houses that existed on the other side of town."

Well, Maria is in the ninth grade now and doing fine considering the fact that she only has a couple of "hand-me-down" dresses to wear and a windbreaker and gymshoes during the winter.

bunch of paper clips all over the floor. While sheepishly stooping to pick them up, I overheard part of a conversation through an office door left ajar.

Well, after thinking about it for a long time, I've come to see there is a definite link between the conversation I overheard and the fact that I am watching so much television lately. I noticed the night of Songfest that most of the people watching the closed circuit were, like me, dressed in blue jeans and things like that.



The Brotherhood of Delta Gamma Tau is proud to announce its spring pledge class. They are: John Boelens, Denny Converse, Gary Green, John Llewellyn, Jay O'Brian, Rick Payea, Bob Reindel, Bill Watson, Marshall Weeks, Craig White, and Gary Zandt.

The Brothers of Delta Sigma Phi wish to extend their warmest congratulations to Brother Bob List on his pinning to Meredith Lipke of C.M.U.; to Brother Jeff Johnson on his pinning to Wendy Rigby and to Brother Brad Carey on his pinning to Nancy Wilson.

The Brothers of Theta Chi Fraternity proudly announce their spring pledge class. They are: Steve Newell, De Tour; Bill Deane, West Acton, Mass.; Tom West, Cedar Springs; Walt (Skip) Remter, Grosse Pointe; Chris Cornwell, Rockford and Tom Snelham, Birmingham.

A supersonic boom from an SST (super-sonic transport plane) may shiver window glass, shake foundations of buildings, crack ceiling, terrify chickens out of laying, stop cows from letting down milk, send humans into mild shock, and flood police headquarters with frightened calls.

there inside the auditorium, and not watching it on closed circuit.

T.B.

thomas blatant REPORTS

"Electronic Spring Cleaning"

Advertisement for ALMA Reminder with text: READ THE ALMA Reminder FOR THE BEST BUYS ON ALL YOUR NEEDS!

By-Law Change for ALMANIAN

The Publications Committee reviewed, revised and accepted several proposed changes in the Almanian by-laws, including a couple of staff position changes. This year's Information Services Editor position responsibilities will be handled by a News and Information Editor. This year's Circulation Manager position responsibilities will be handled by next year's Business Manager. Also, the new post of copy editor has been created, with responsibilities under the managing editor such as preparation of copy, layout work, and management of a corps of typists for the purpose of such preparation.

Other business included the appointment of Jim Tarrant as Sports Editor for the Almanian and Glenn Loucks as Art Layout Editor for the Scotsman, both for the remainder of the year.

Formal wear...



for all occasions.

In your favorite styles and colors.

Rent it at

MARTIN STORES

127 E. Superior

One of These Ten a Queen



From this group of ten Alma College coeds will be chosen one to reign over campus day 1970 as queen with four more serving on the court. Hopefuls include (from left) Sally Nolan of East Lansing, Karen Lovett of Farmington, Susan Pike of

Manistique, Jann Hoekje of East Lansing, Bev Schmidt of Benton Harbor, Jody Kebler of Charlotte, Jo Fideler of Howell, Helen Beudal of Bay City, Sara Conyer of Alma, and Debbie Perry.

Birth Control Seminar Topic

It is becoming increasingly obvious that the biggest problem facing mankind, now and in the future, is his rapidly increasing population. The one humane way to control this population explosion is through birth control. In the spirit of promoting discussion and interest in this vital topic, the Committee for Originality and Responsible Action (CORA) is sponsoring a birth control and abortion seminar Tuesday, May 5, at 8:00 p.m. in Dow 100. Alma College biology students who researched this area for a seminar course, and who have presented the material once already, will present the discussion. Any questions and comments pertaining to this subject will be appreciated and expected.

All of us should be concerned with this problem; we can't retreat into our academic community and ignore it. The time has come for us to shoulder the responsibility that others may choose to lay down. Are you concerned about the population increase? Do you have

questions about birth control or about abortion? What about legislation in these areas? Come Tuesday, May 5 -- get the facts!

The world population will double in 35 years. The U.S. population will double in 65 years, given present growth rates.

Forty percent of the world's people are under 15 years old.

Automobile fumes account for 60% of the air pollution in the U.S. Carbon monoxide and oxides of sulfur are the main types of pollutants.

Another main ingredient of smog is nitric oxides. It may seriously diminish the blood's capacity to carry oxygen under prolonged exposure. Automobile emission control devices do not remove nitric oxide from exhausts.

Smog in Los Angeles is killing trees 60 miles away.

A NO. 1 BARBER SHOP

209 East Superior Street - Alma, Michigan

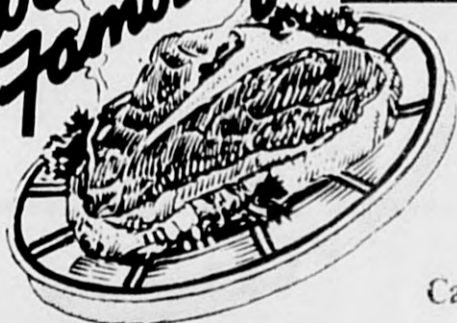
RAZOR CUTS,

HAIRSTYLING, HAIR STRAIGHTENING

HAIRPIECES AND HAIRCUTS BY APPOINTMENT

Phone 463-1904

We're Famous for **GOOD FOOD**



Pizza



Carry Out service available

News travels fast. An enthusiastic customer tell a friend, who in turn becomes a customer... and he too starts spreading the good word. So our good food has become something of an institution in Alma. Try it yourself and see!

Pizza Sam

Phone 463-3881

GIANTWAY'S
SOUND DEPARTMENT
\$5.94

WILL BUY YOU THE BEST IN 8-TRACK STEREO RECORDINGS
Big hits, big groups!

JEFFERSON AIRPLANE MC 5
LED ZEPPELIN CHICAGO
SIMON & GARFUNKEL
and many, many more

WHY SIGN OUT

Under the new proctor system sophomores and upperclass women are required to sign in and out on a register sheet on Thursday through Sunday nights. Dean Rentz has provided one reason for this requirement: if there is a fire or some other emergency, by process of elimination, it can readily be determined who is in and out of the dorms.

We find it necessary to question this rationale. Unfortunately, fires do not confine themselves to the 12 hour period from 7 PM to 7 AM, as evidenced by the Tuesday, 10 AM trash fire in Newberry Hall. Neither do fires confine themselves to women's dorms.

It is becoming increasingly difficult for some women to comply with some of the rules on this campus appearing to be based either on tradition, a double standard for men and women, or questionable rationals such as this one. Their enforcement and implementation result in pettiness on the part of judicial boards and women residents of the college.

If further rationalizations can be provided for this apparently unnecessary regulation, we would be interested in hearing them. If not, we strongly suggest the abolition of this rule and those with similar rationales.

any opinions expressed or implied are not necessarily those of Alma College, its students or its faculty



The Almanian



MEMBER



The Almanian is published weekly during the school year, September to June. Publication offices are located on the north side of Memorial Gymnasium on the Alma College Campus. All correspondence should be ad-

ressed to: **The Almanian**, Alma College Alma, Michigan 48801.

Telephone: (517) 463-2141, ext. 234
Subscriptions: one year regular, \$5.00; alumni, \$4.00; life, \$75.00.

All copy must be received at **The Almanian** office by 5:00 p.m. Friday for publication the following Monday.

Editor-in-chief Thomas Schumm
Business Manager . . . Chris Fuhrmeister
Feature Editor Reid Simons
Campus Government Editor . . Mark Foster
Information Services Editor . . Laura Worth
Sports Editor James Tarrant
Arts Editor Debby Beery
Circulation Director Ruth Camp
Production Consultant . . . Michael Sullivan
Printing The Alma Reminder
Collating The Saginaw Valley Shopper

Reporters:
Mike Delp, Dee Gill, Jana Lunger, Carol Mitchell, Margo Siegfried, Craig Somerville, Bob Spencer, Larry Stephey, Doug Trout.

Typists:
Sue Gnagy, Patti Cowden, Kathy Duke, Dale Jenkel, Jody Morris, George Bennett.

Since 1600, man has wiped out 36 species of mammals and 94 species of birds. There have been no replacements. In the last 15 years the blue whale population was reduced from 15,000 to 500, due to overwhaling.

"The U.S. -not sharing with any other country in the world- will consume all there is of some of the critical resources of our planet before the middle of the next century."
-Paul Ehrlich

letters to the editor

Critics and Criticism

Dear Editor:

Perhaps Margo Siegfried and Tom Schumm could get jobs as music critics for the NEW YORK TIMES. Then again, maybe not. They seem to feel qualified to hand out sweeping praise or criticism, in some cases contradicting the decisions of the Songfest judges. Editorial comments in a Page 1 "news" story are a discredit to Songfest and to the ALMANIAN. Take Pot Shots if you will—in their proper place.

Sincerely,
Susan Keever

so I will try to mention some groups and committee heads. Thanks to:

- Dr. Ronald O. Kapp
- Sue Damerell
- Carol Mitchell
- Ellen Vande Visse
- Jill Smith
- Jeff Kenyon
- Pat Bothwell
- Bob Aumauger
- Dave Thomen
- Cheryl Muxlow
- The brothers of Alpha Phi Omega
- The sisters of Gamma Sigma Sigma
- Mr. Don Stearns
- Rod Mac Donald
- Bruce Bonnell
- John Janssen
- Gary Oltz
- Dr. Luke
- Mr. Jerry Smith

and all the other people that helped and were involved in the teach-in.

John Giesy
Ch. En Act - Alma

Reflections on Earth Day...

Editor:

It is said by those in authority that the youth of America were ignoring the true apocalyptic meaning of earth day and just using it as an excuse for making merry. I think not. Survival is in question and we must do all we can to preserve earth for our children and our children's children. We have been warned by scientists that we are on the verge of starvation and that we are plundering huge amounts of what was once land that was rich and fertile. Now this land is nothing but barren sand and useless rock.

The President refused to make this week Earth Week which speaks for the administration's interest in the concern shown for the earth. The budget for the next fiscal year shows \$2.75 billion for the SST and a mere \$1.5 billion for air pollution. This should strike everyone as peculiar. April 22 just happened to be Lenin's birthday and true to form many called the Earth Day rallies a communist plot. We must do something to stop all this air pollution and water pollution. We must stop pollution of anything. If we don't our bones will be pure Strontium 90 and our blood will contain DDT. For those who termed the Earth Day rallies a "safe crusade" and "just another passing fad" like a war on poverty, they are sadly mistaken. And I hope they are wrong.

Margo Siegfried

Girls from Saginaw; Here's Your Chance

Dear Sir:

The Saginaw Jaycees Auxiliary invites all girls between the ages of 17 and 27 and who are residents of Saginaw, Tuscola, or Gratiot counties to contact Mrs David Hollis, 2612 Cooper Street, Saginaw, Michigan 48602 for information and entry forms for the Miss Saginaw County contest. This is a preliminary for the 1971 Miss Michigan contest to be held in Muskegon in June of 1971. The Miss Saginaw County contest will be held August 22, 1970, with the deadline for entries July 6, 1970. If you are at all interested please contact Mrs. Hollis at the above address.

Sincerely,
Melinda Lee Klopfenstein
(Mrs. L.D. Klopfenstein)
Saginaw Jaycees Auxiliary
Co-Chairman of Publicity
Miss Saginaw County

...And Other Thoughts

I had been looking forward to Saturday the 18th for a long time, but as the day came nearer I began getting apprehensive because that was the day of the environmental teach-in sponsored by En Act-Alma. Being chairman of the community group, I was concerned about the mechanics of running such a massive program. I knew that I had many competent people working on every phase of the project from ushers to panelists but still I felt responsible if anything should go wrong. Saturday morning came and things were busy and I still feared that something might go wrong. I made my way to the gym and found that things weren't started yet but that may have been due to the fact that the beginning of the morning session of the teach-in was still some two and one half hours off. Soon people started appearing and I found myself stepping back from the bustle of activity; posters were going up, ushers were taking their places, people were carrying information packets and books, tables were being set up and all was going too well. I had left myself without any specific duty so that I could take care of any emergencies. All I could do was stand back and watch things run.

As far as mechanics, the teach-in ran very smoothly. This was due to the many fine people that were doing it all. I would like to indulge in a little thanks to all of these people now. I know that I cannot mention everyone

Student Creativity and the Creative Student

To the Editor of The Almanian:

In spite of some claims of general student apathy on the Alma campus, there are students who are concerned about action and creativity. These students have formed the Committee for Originality and Responsible Action. Is this committee another half-hearted attempt at student involvement, or do its members really wish to do something for this academic community?

If one looks at what the committee has accomplished in its two weeks of existence, one must admit it is getting things done. First, an arrangement has been made with the library for a permanent display of such examples of student originality as poetry, art, photography, and sculpture. Starting with a poetry exhibit the first week in May, the display will be expanded to include all the other facets of student originality. Any student is free to submit his work for exhibition.

Second, a birth control seminar has been scheduled for Tuesday, May 5, at 8:00 p.m. in Dow 100. Many of us on this campus don't know nearly enough about this crucial issue. This seminar will give us all a chance to get a factual overview of a problem that should be our concern.

(continued on next page)

MUSIC THE COMPONENT WAY

Garrard

FAMOUS TURNTABLE
by
GARRARD

Priced
from
39.95
to
99.95



SANSUI

FOR THE
COMPONENT
FAN



350

One of the
world's great
receivers

199.95

ALMA PLUMBING-HEATING-ELECTRICAL CO.

TV & STEREO LOUNGE

OPEN MON.-WED.-FRI.-EVENINGS

Located Next to Little Rock Lumber in Alma - 463-1361

Pizza

from

THE

PIZZA HUT

(across from the Strand Theater)



CALL 463-4184

10 Inch \$1.00

14 Inch \$1.60

Extra Items 20c

Extra Items 35c

WHEN YOU DON'T WANT TO GO OUT

LETTERS cont.

The committee's title expresses its purposes as well as any detailed account could. If any student has any questions about the committee or about what it ought to be doing, he can find out about by asking one of the individuals listed below.

- R. Andrew Barker
- Ruth Crawford
- Anne H. Dyer
- Mark Foster
- John Hull
- Rod Macdonald
- Mary Jane Thompson
- Doug Trout
- Vicki Van Wormer
- Laura Worth

To Attend or To Learn

LETTER TO THE EDITOR

I have just returned from my 7:00 p.m. Wednesday Religion 321 class and to say the least, I am quite disappointed and angry at myself for not having already dropped out. To begin with, what kind of a class can you have when it meets for only two hours (2¹/₂ most) one night a week? And how about going for two weeks straight without an assignment? And this is an advanced level course? I came to Alma College to learn, but I must admit I haven't been too successful. Why? Because half of the courses offered here are taught so poorly that they become intellectually stifling.

I am blessed this term with three such classes. I think the prize must go to Dr. Bechill for his "brainstorm" for Sociology 201, SimSoc (Simulated Society). It's a game meant to help you understand on a more concrete level how society "works", but all it does for me is waste two hours. I am praying that I will be able to avoid getting subsistence for one more session and then I'll die! If not, I could always commit suicide.

One of my big gripes both here and in high school pertaining to the requiring and grading of physical education courses. I have decided to not take either of the required phys. ed. courses and see if the college will hold back my degree. Wouldn't they look stupid if anyone questioned them as to why they would not let me graduate and they would have to reply: "Well-uh, he hasn't taken "advance volleyball" yet.

As long as I'm criticizing the phys. ed.

department and Dr. Bechill, why stop there. I've had many other courses equally as wasteful and absurd. Philosophy 316-Education 226-Topic I- English 200-to mention a few. The biggest farce yet was Dr. Swanson's baby, Religion 448. I must admit that part of that was my own fault, but all those faculty involved must admit they never were really prepared for that course.

Finally-and I'm sure some people will be surprised with this-I must criticize the music department. I have not yet been able to find any way of justifying grades in band, choir and orchestra. They are really extra-curricular activities and should be treated as such. I must admit they do help pull up the grade point, but then is that really why you came to Alma College-to try for a 4.00. (Hooray for the Alumni Association for realizing the need for a senior award emphasizing grades less than the Barlow trophy!)

I came here to learn. Why must I be denied that privilege so often? I am tired of wasting my time on such poor courses as mentioned above. I will begin by dropping both Religion 321 and Phys. ed. 115. I also suggest that the college take a good hard look at its faculty and dismiss those who are failing to perform their duty; namely, to provide us with an opportunity to learn.

Perhaps I should end on a good note and congratulate those professors whom I have had that proved to be worth their salt.

Congratulations!- Dr. Walser, Dr. McGill, Dr. Toller, Mr. Dykstra, and Dr. Klugh.

Harold Kruse

PUB COMMITTEE PROPOSES CHANGES

The Publications Committee has sent proposed constitutional changes to the appropriate deciding bodies that would broaden the committee's jurisdiction to all on-campus communications, which would include an on-campus radio station. This new "communications committee" would review and classify all "student and on-campus communications" into three major classes, and supervise the communications. According to the defined limits of each of three classes, the committee would have some jurisdiction. Part of the Ex-Officio membership of the newly named committee is, as stated, "Editors and Business managers of each student and on-campus communication in Class One." A student-run radio station would be in this class, and therefore would be entitled to voting chairs on the committee for its equivalence of an editor and business manager.

The proposed changes will be sent to the Student and Faculty Liaison Committees before going to Executive Board, which meets next Wednesday.




THIS WEEK AT PIZZA KING

FREE

Delivery ...

Just like every other week

463-6186

 *The Fabric Shop*

CAMPUS HEADQUARTERS FOR FABRICS

125 E. Superior Alma, Michigan 48801

DON'T WEIGHT



Check our wide selection.

Hand weights and lift weights to 160 lbs.

 Complete line of sporting goods.

Van Atten's INC

PHONE 463 3189
311 E. SUPERIOR, ALMA, MICH

 Your Headquarters for Gifts, Jewelry, and Repairs

CHURCH JEWELERS

113 E. Superior

PICK-UP & DELIVERY
CALL ABOUT OUR INSURED SUMMER STORAGE

Modern Cleaners

122 W. Superior
Ph. 463-5701

ALMANIAN ARTS

a/s/ 27, 1970

MARY BETH PELL

BIDS ADEAU TO ALMA MAY 3

THE CORNER

Alma College's Affiliate Artist when she performed under the name of Mary Beth Pell, a soloist with the college's Kiltie Concert Band on Sunday, May 3. Pell, who has become a lavishly popular performer, has appeared thousands of times throughout Michigan during her years of appearances on behalf of Alma College. Before her appointment as Affiliate Artist, she will sing highlights from "The Sound of Music".

During her three years as Alma College's Affiliate Artist, Miss Pell visited the campus five or six times each year for periods of one to two weeks. Each time that she came to Alma she worked as a performer, an inter-are limited to three years, a counselor, a teacher, and during her final week as a representative of the college.

She made several appearances with the college's A Capella Choir throughout Michigan and this spring was featured as soloist with the choir on its tour of Southern states.

Her lecture-demonstrations on opera and other aspects of music have been especially popular on the Alma campus, at schools throughout Michigan, and at meetings of civic and social groups. Her vibrant personality, her great talent, and her sincere dedication

Pictured here is a sampling of those who participated in Public Service Weekend held April 20-21. Paralleling the theme of "Give Earth a Chance", the TKF's put forth a unified effort to promote anti-pollution by conducting a city-wide litter pick up.

The Red Eye of Love on the Bill for May 14-16

Lead roles in "The Red Eye of Love," a comedy to be presented by the Alma College. Miss Gill and Miss Gill will play silent mime roles and Miss Gill will play the role of Wilmerparts which reappear throughout the play.

Ticket Available
* * * * * #1 W W M W L W L W

A few tickets are still available for the

The Red Eye of Love

Senior from Wyandotte; Lois Bye, freshman lady and the mother of a young boy Bunnelligan State University a week from tonite from Flint; James Fargo, Berkley freshman; will be a newsboy, night watchman soldier May 4th The program included » DeeAnn Gill, sophomore from St. Johns; Con-He also plays the part of Bez son of Wilmer others Brahms' Academic Festival Over Nancy Stodola of Big Rapids, a freshman; Tickets for the comedy to be presented in Shostakovich Tickets also went on sale today for a Miss M Callum 3 senior English major at and Craig White, freshman from Spring Lake. Dow Auditorium each of the three nights will A ma plays the role of Selma the girl whose White plays the role of a policeman whose available at the college without charge in May 7th performance of MACBETH at the affections alternate between the dreamer she serves as a kind of comic chorus. commenting May.

Mount Pleasant

218 S Main

216 E Broadway

APRIL 29 - MAY 5

STARTS APRIL 29

V, K DAMNED

"ONE OF THE YEAR'S
10 BEST!"

ROBERT REDFORD KATHA F \ E ROSS
ROBERT BLAKE SUSAN CLARK

"TELL THEM WILLIE BOY IS HERE"

A I k * u u s
soon

i j k *
n M > s l
man in
Nazi
Cknnanv

FEATURES AT 7:30 A 9:40

j FOR MOVIE i
i INFORMATION CALL !
i EXTENSION 234 |

Ah ALFRED .EVY- EVER -AGGLIAG RRODUCT'O'.
HOMO rEVV." 'MVA-o *

TECHNICOLORS FROM WARNER BROS.

FEATURES AT 7:00 A 9:45

Custodian's Dismissal Contested

During spring break, on March 24th, Mr. George Bruce was dismissed from his position, held for five years, as custodian of the Union. Mr. Bruce had subsequent conversations with Mr. Fraker, Dr. Meyer, and Dr. Swanson to contest his dismissal, but was unsuccessful in his appeal.

A group of students, hearing of Mr. Bruce's plight, attempted to search out the facts in the case. Even with the written consent of Mr. Bruce to make the list of grievances against him public, the administration refused access to them.

Because these students feel that Mr. Bruce may have been fired unjustly, they are holding an open meeting, in order to ask and answer questions on the matter, on Tuesday, April 28th in Tyler, at which key personalities in the issue have been invited to be present.

According to Mr. Fraker, Mr. Bruce was dismissed for his "failure to perform the job as directed." According to the job description for custodians, he could have been fired for anything from not keeping the Union clean to fraternizing with the students

or attempting to act as counselor to students.

Mr. Fraker has said that it is common business practice not to publicize employment files.

The students supporting Mr. Bruce are circulating petitions calling for the college to offer reinstatement and pay Mr. Bruce full compensation for the work he has missed as a result of his dismissal.



FOR SALE

1965 Mustang convertible. 289. 4 V. Contact Tom Schumm, Wright. Afternoons or evenings.

Chairs, refrigerator, Kirby paintings, lamps. Tom Schumm, Wright.

Blue suit 39 long. Excellent condition. Tom Schumm, Wright.

SERVICE

Girls! SINGER rentals \$2.50 per week. Call ALMA SEWING CENTER 463-3200

THE 1st STEP IN A SOUND FINANCIAL PORTFOLIO



No. 1 in College Sales Nationwide

Howard J. Anderson Alma College Representative
Fidelity Union Life Ins. Co. 773-7817

A Gittleman's Presentation

THE FASHIONS of CALIFORNIA

Featuring The Greatest Cast Of Brands Of CALIFORNIA FASHIONS

Koret of California --- Arpeja --- Internationale Set --- Jody --- Cole of California --- Tomboy --- High Tide --- George Girl --- City Pant Works --- Ignatz --- Jerry Mann --- Edith Flagg and many other California Brands

Enter Gittleman's California Sweepstakes
WIN \$100.00 CALIFORNIA WARDROBE

See Rules Bottom of This Page - Pick Entry Blanks in Store



California DRESSES

Juniors in Voiles, Piques, Amel Jerseys, Rayon Linens, Kettiecloth
By Jody, Tootique, Arpeja, Plain Jane, etc.
Missy in Washable Polyester
By JSE Jack Marsee, George Girl, Mr. Bob and others
from \$18.00



California BLOUSES

Dacron & Cotton Voiles
100% Polyesters
By Lee-Mar, Nana, Teedi, and others.
Whites - Pastels - Brights
from \$10.00



California SWIMSUITS

The Silhouettes... The Stars...
• One Piece • Cuts
• Bikinis • High Tide
• Boy Legs • Top Drawer
• Cages • Beachville
• Beanies • Sea Fashions
• Channel 2
In Various California Colors
from \$13.00



California PANT SETS

Tunic and Pants Dress and Pants
• JSE
• George Originals
• Mr. Bob
• Jerry Mann
• Chickadee
• Internationale Set
• Jack Marsee
• Alex Colman
from \$30.00

Machine Washable Polyester Embroidered Cotton

White and Pastels

- CALIFORNIA SWEEPSTAKES RULES**
1. Pick Up Entry Blank in Any Gittleman's Store.
 2. Identify The Twelve (12) Numbered Movie Star Posters.
 3. Deposit Entry Blank in Drawing Box.
 4. Drawing Will Be Held On Monday, May 4th, 1970.
 5. First Name Drawn Correctly Identifying All 12 Wins \$100.00 in California Fashions.
 6. Winner Will Be Notified By Mail.
 7. No Purchase Necessary.
 8. You Need Not Be Present To Win.

Use Your Michigan Bankcard, Your Master Charge Card or Any of Gittleman's Convenient Plans.



ALMA MT PLEASANT HASTINGS IONIA GREENVILLE LANSING (Frandon)

NOTICE ALMA COLLEGE STUDENTS!

WHY CART ALL YOUR WARDROBE HOME THIS SUMMER?

We will safely store and return them to you freshly cleaned and pressed. Call us for details.

ALMA CITY CLEANERS
Phone 463-5992
316 W. SUPERIOR

Bluebird DIAMOND RINGS

LUETH Jewelers

ALMA TROPICAL FISH CENTER

SPECIALIZING IN YOUR TROPICAL FISH NEEDS WITH 32 TANKS OF TROPICAL FISH

Parakeets
Gerbils
Rats
Hamsters
Guinea Pigs
Canaries

Check our line of cat and dog supplies.

228 E. Superior
Phone 463-2364

United States land is being urbanized at the rate of 3000 acres per day.

Hotz and Green

Testify

Alma Student Council members Barb Hotz and Joe Green testified Friday, April 17th, in a public hearing in Lansing concerning bills presented by Representative Vaughn of Detroit. The bills propose lowering the voting age to 18, lowering age limits on holding public office, serving on jury duty and as precinct delegate, and to assure students in State-supported universities a voice in school administration.

Barb and Joe testified concerning Alma's Community Government Structure, which insures students that they have a channel for views and recommendations concerning policy and decisions which affect them.

They also spoke of Alma's Board of Associate Trustees, which allows for students to access to the Board of Trustees in an advisory capacity. They voiced the belief that students in State-supported schools should have these privileges also.

The bills will need a strong grass roots movement and support, especially by youth, to be carried through.

Community Government Applications Due

The deadline for Community Government application for next year has been extended to Wednesday, April 29th. There are seven committees for which a total of 24 students may achieve positions. Interested students should submit a letter, containing their qualifications and preference (if any) to Chris VanSickle, TKE House, or to Jan Todd, Bruske, by Wednesday.

The Committees for which students may apply are: Executive Council, two students; Educational Policy, three students; Academic Review, three students; CoCurricular Affairs, four students; Student Affairs, seven students; Publications, two students; and Judicial, three students. Each applicant will be interviewed by a screening committee, after which the screening committee (one for each Community Government Committee) will recommend persons for the vacancies. Membership, however, will be ultimately decided by the Student Council as a body.

DOUD DRUGS
The Friendliest Drug Store in Town

Coty-Muguet des bois
\$2.50 - \$3.00

101 W. Superior
Phone 463-1796

Kampus Korner

Open: 11-12 midnight, weekdays. 11-12:30 a.m. on Fri. & Sat. Sun. from 12-12. Cold beer & wine to take out.

MPUSKORNERKAMPUSKORN

For the best of deals see

C. L. GREENING & SONS

Chevrolet & Buick