

Maroon
and Cream

1929

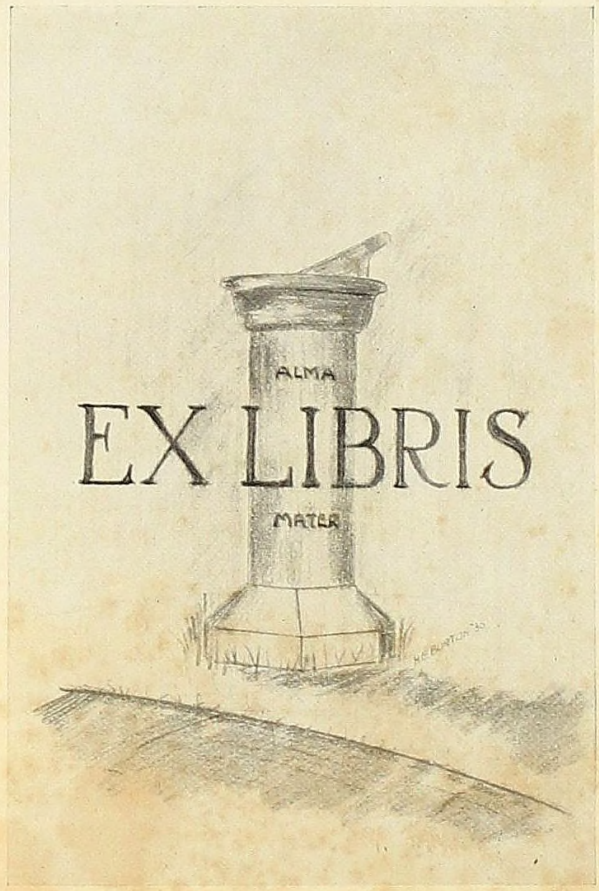
Closed
Collection
LD
131
.A612
1929

Charlie Goodenow
Phi Phi Alpha - 1929

Alma College
Library



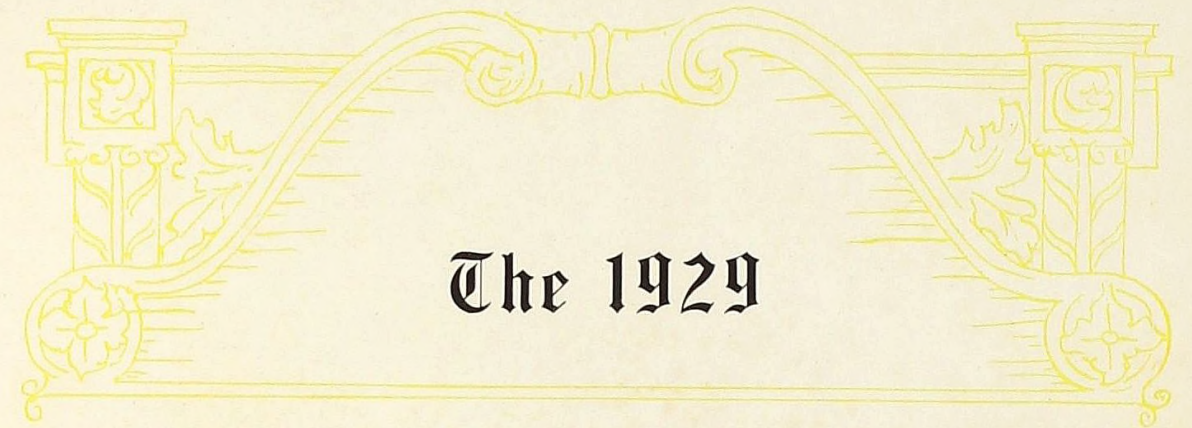
Gift of
Charles F. Goodenow



ALMA
EX LIBRIS
MATER

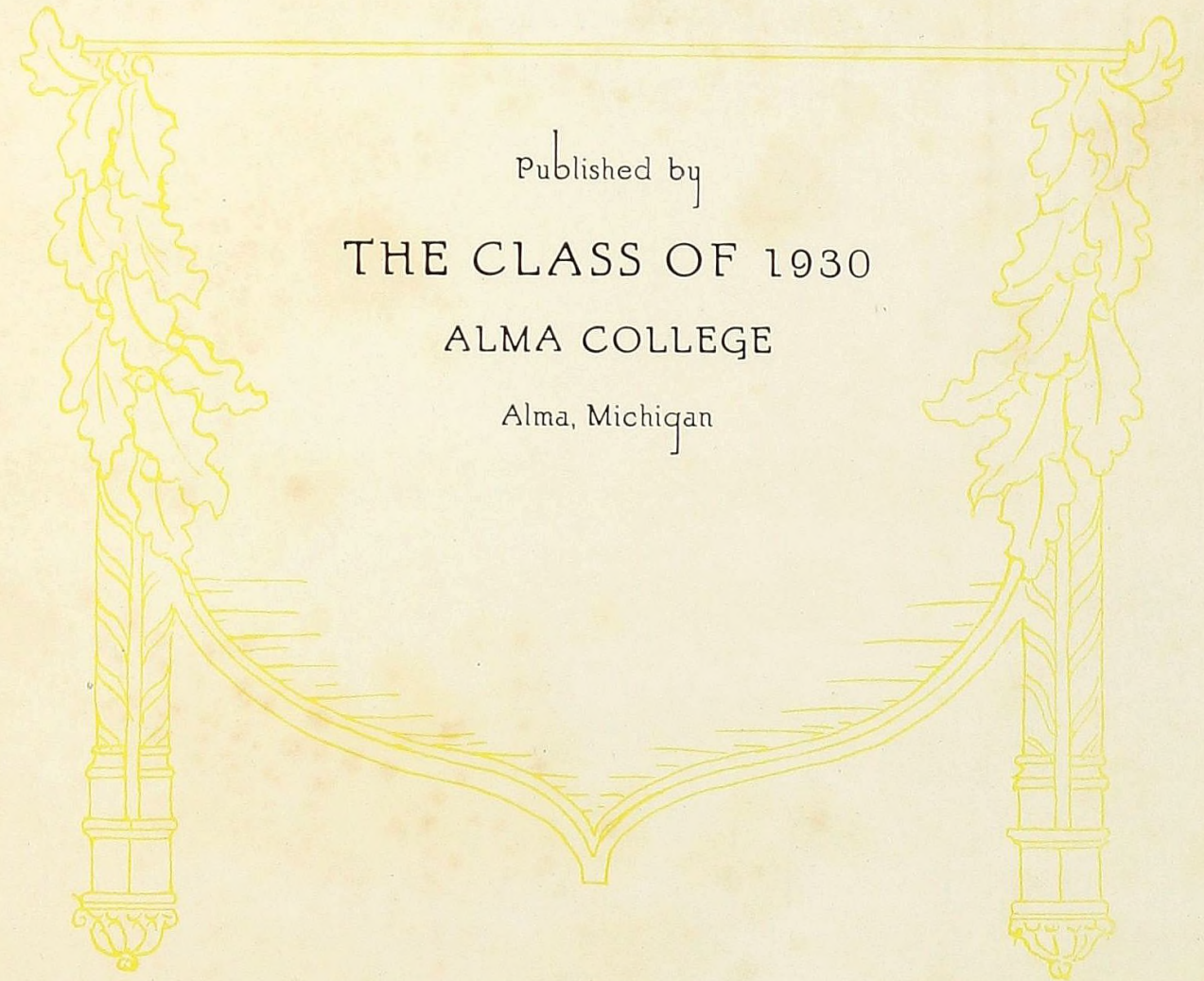
Editor-in-Chief
IRENE A. BEUTHIN

Business Manager
HAROLD M. LOGAN



The 1929

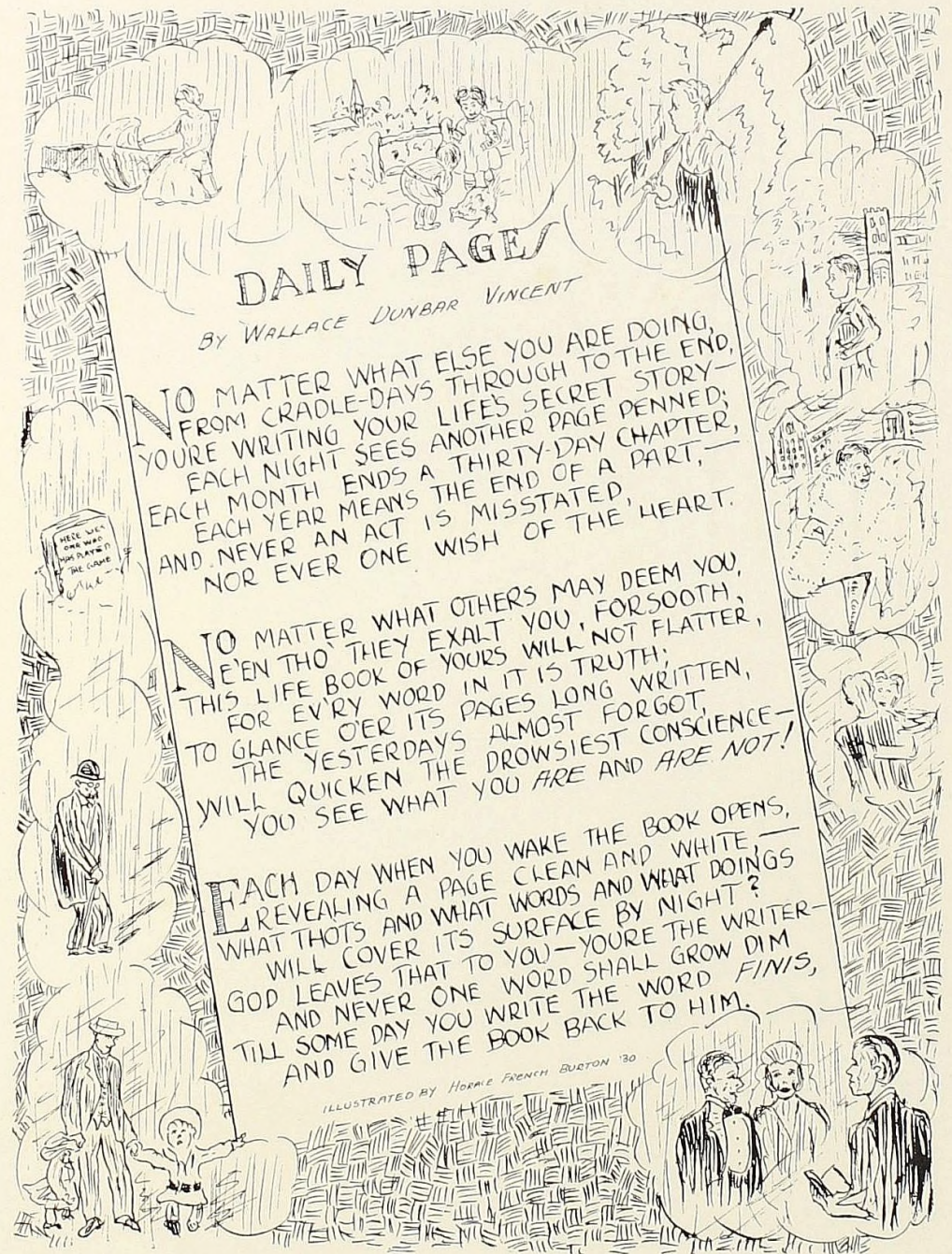
Maroon and Cream



Published by
THE CLASS OF 1930
ALMA COLLEGE
Alma, Michigan

Foreword —

May the stones laid in Alma College
be useful ones in the mansion of your
life, and may this book recall happy
memories of the days when that building
was in the first stages of construction.



DAILY PAGES
BY WALLACE DUNBAR VINCENT

NO MATTER WHAT ELSE YOU ARE DOING,
FROM CRADLE-DAYS THROUGH TO THE END,
YOU'RE WRITING YOUR LIFE'S SECRET STORY—
EACH NIGHT SEES ANOTHER PAGE PENNED;
EACH MONTH ENDS A THIRTY-DAY CHAPTER,
EACH YEAR MEANS THE END OF A PART,
AND NEVER AN ACT IS MISSTATED,
NOR EVER ONE WISH OF THE HEART.

NO MATTER WHAT OTHERS MAY DEEM YOU,
E'EN THO' THEY EXALT YOU, FORSOOTH,
THIS LIFE BOOK OF YOURS WILL NOT FLATTER,
FOR EV'RY WORD IN IT IS TRUTH;
TO GLANCE O'ER ITS PAGES LONG WRITTEN,
THE YESTERDAYS ALMOST FORGOT,
WILL QUICKEN THE DROWSIEST CONSCIENCE—
YOU SEE WHAT YOU ARE AND ARE NOT!

EACH DAY WHEN YOU WAKE THE BOOK OPENS,
REVEALING A PAGE CLEAN AND WHITE,
WHAT THOTS AND WHAT WORDS AND WHAT DOINGS
WILL COVER ITS SURFACE BY NIGHT?
GOD LEAVES THAT TO YOU—YOU'RE THE WRITER—
AND NEVER ONE WORD SHALL GROW DIM
TILL SOME DAY YOU WRITE THE WORD FINIS,
AND GIVE THE BOOK BACK TO HIM.

ILLUSTRATED BY HORACE FRENCH BURTON '30

— TO —

Dr. Hansford M. MacCurdy

Ripe scholar, sympathetic teacher, courteous gentleman, valued friend, modest man, the Maroon and Cream is dedicated, with gratitude and affection, by the Junior Class.

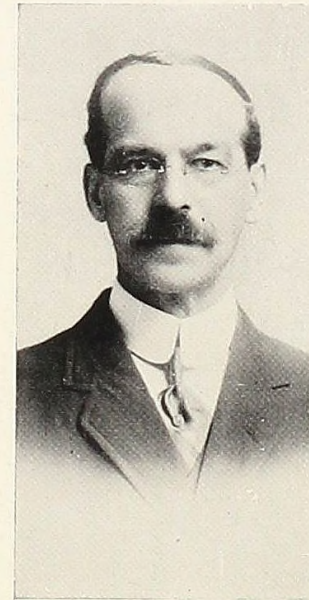


IN MEMORY OF

The Late Professor Albert Perry Cook, A.M.

*Professor of Latin, Secretary of the Board of Trustees,
Secretary and Treasurer of Alma College*

As a scholar, his proficiency in fields of classical literature and language was unquestioned. As a business man, his remarkable efficiency was recognized and admired by all. As an example of Christian manhood, he was unsurpassed. As a friend, he was respected and beloved by all. We mourn his departure, but his memory shall ever be held in reverence by the students, faculty, and friends of Alma College.



Contents —

Campus Views

Administration

Classes

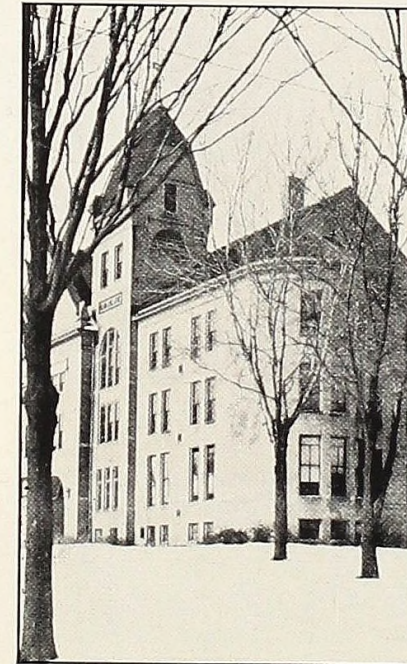
Organizations

Activities

Athletics

Feature

Campus



Views



Once more come up the familiar street



to the halls of learning,



to spend quiet hours in study,



and happy ones in joyous companionship,



or stroll again through the grove



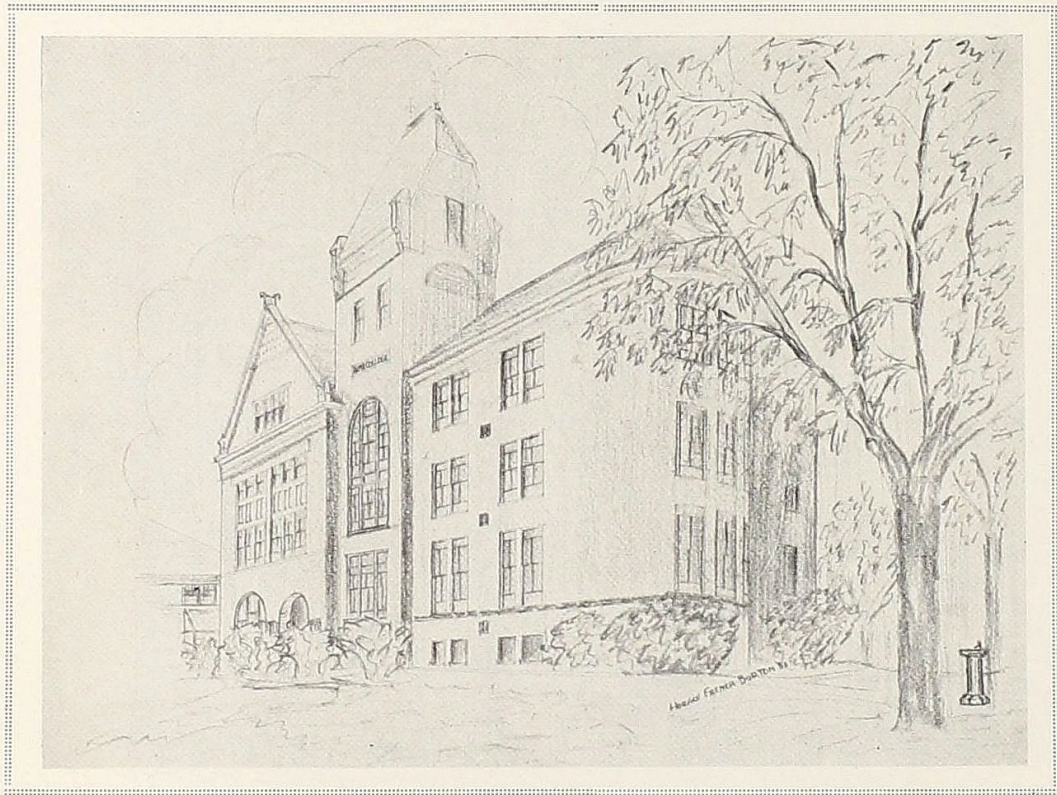
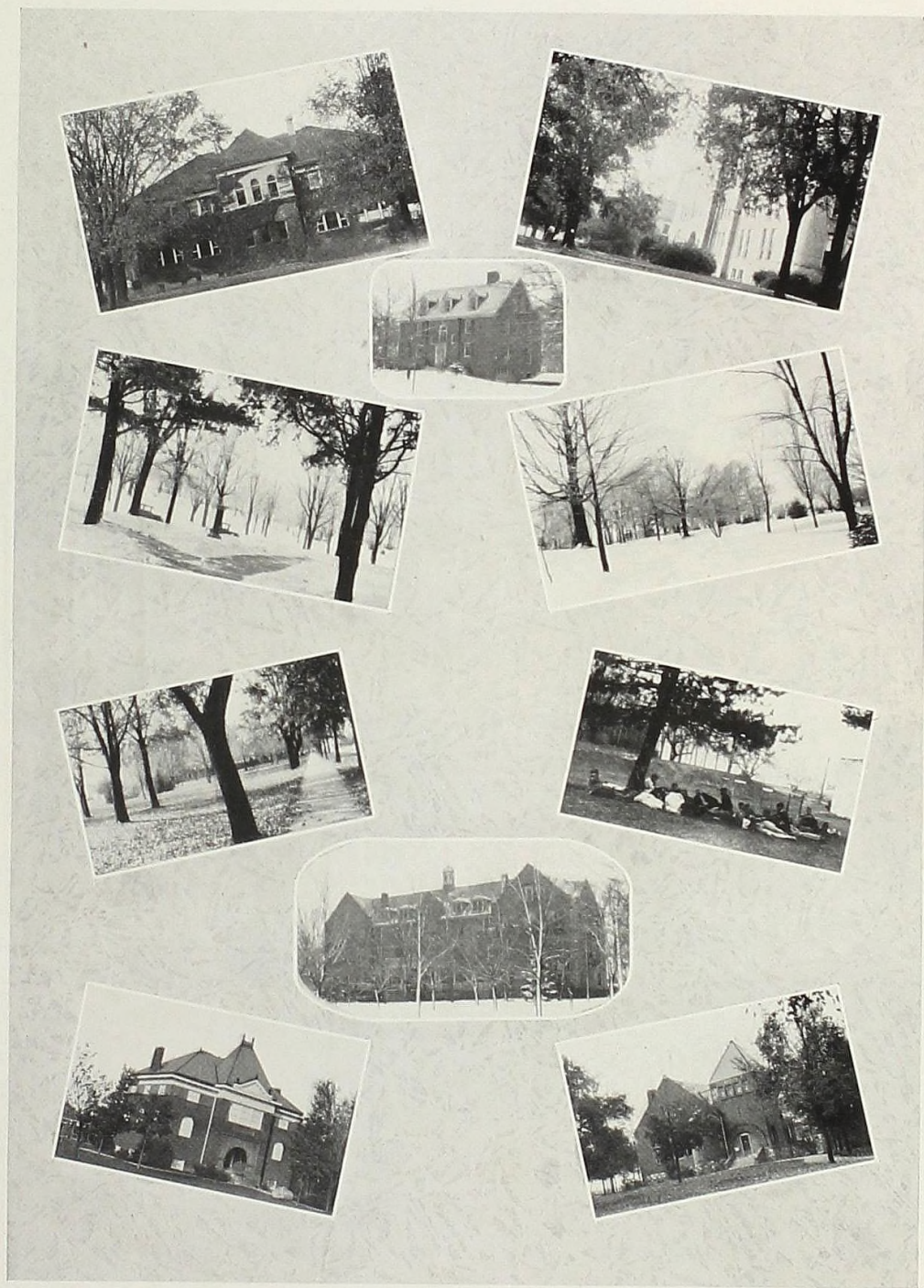
where many a romance has flowered,



and enjoy the hospitality



of those who make these memories dear.

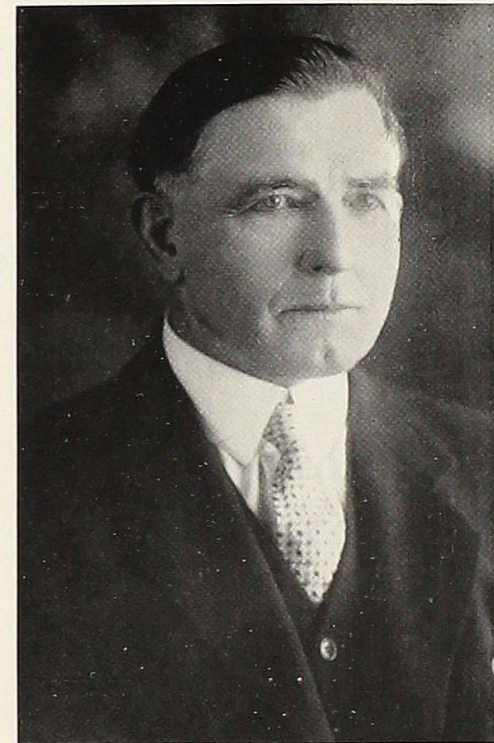


Administration

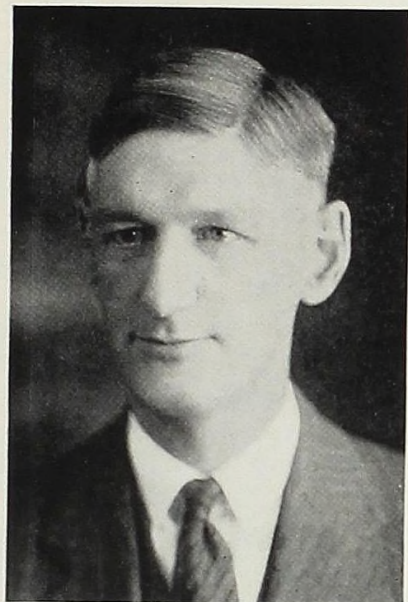


HARRY MEANS CROOKS, A. B., LL. D.
President of Alma College

JAMES E. MITCHELL, A. M., LL. D.
*Dean of the Faculty
Professor of History and Political Science*



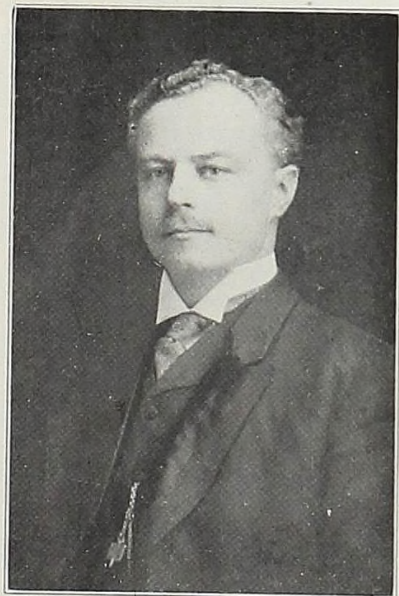
FLORENCE M. STEWARD, A. M.
*Dean of Women
Assistant Professor of English*



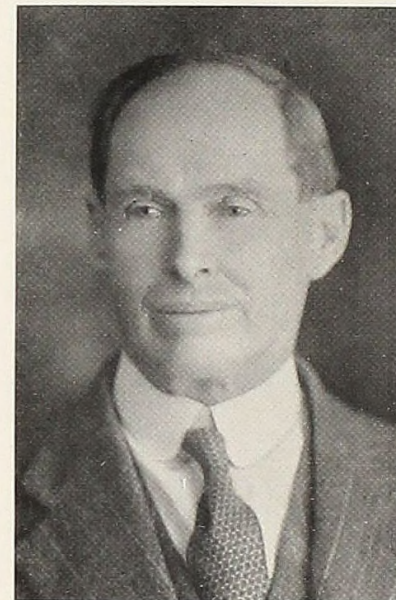
ROY W. HAMILTON, A. M.
*Secretary of the Faculty
Vice-President of Alma College
Professor of English Language
and Literature*



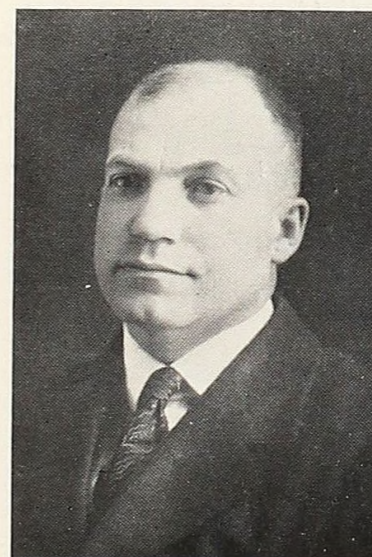
HERMAN W. SPENCER, A. M.
*Professor of Rhetoric
and Journalism*



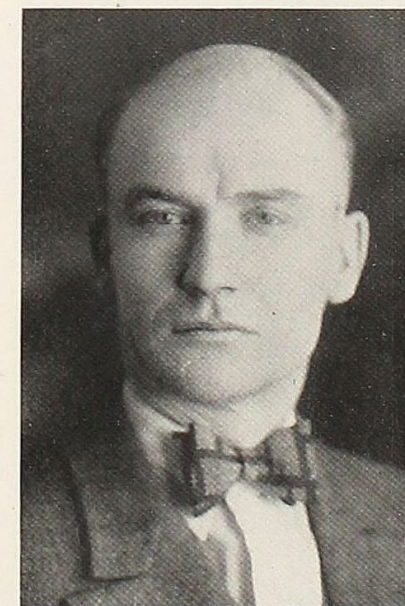
CHARLES D. BROKENSHERE, A. M., B. D.
*Professor of Biblical Literature
and Religious Education*



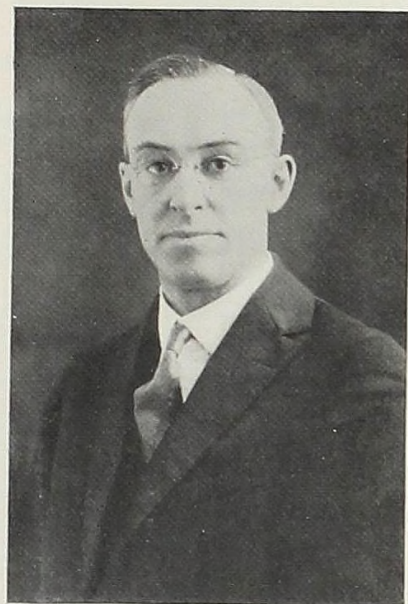
HANSFORD M. MacCURDY, Ph. D.
Professor of Biology and Geology



ROBERT W. CLACK, A. M.
*Professor of Mathematics
and Astronomy*



WILFORD E. KAUFMANN, Ph. D.
Professor of Chemistry



RAYMOND C. DITTO, A. M.
Professor of Physics



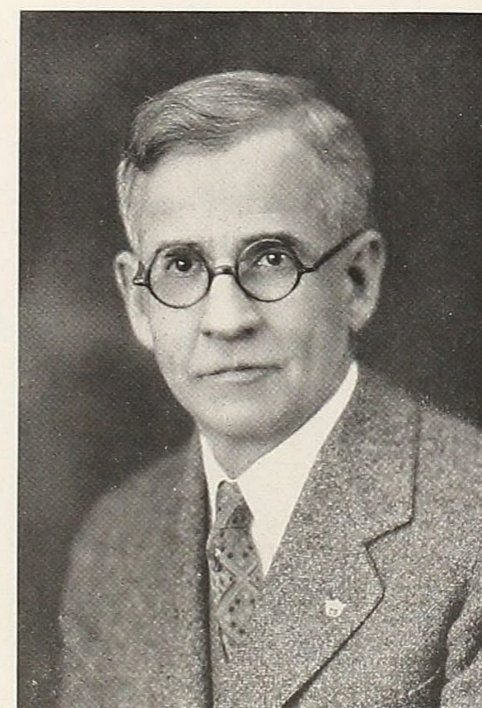
RITA BIONDI, M. S.
*Assistant Professor of Biology
Director of Physical Training
for Women*



ROYAL R. CAMPBELL, A. B.
*Director of Physical Training
for Men*



GEORGE B. RANDELS, Ph. D.
*Professor of Philosophy
and Psychology*



LEON L. TYLER, A. M.
Professor of Education



ROCKWELL C. JOURNEY, A. M.
Professor of Economics



JOSEPHINE BANTA, A. M.
*Assistant Professor of Latin
and Greek*



MARGARET E. FOLEY, A. M.
Assistant Professor of French



GEORGE C. WISE, A. M.
*Professor of German
and Spanish*



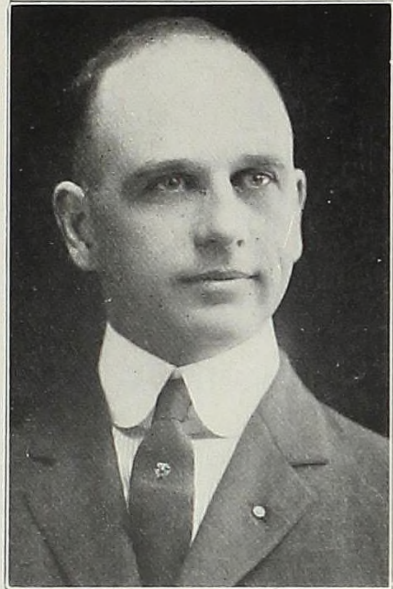
JESS W. EWER, A. B.
*Professor of Vocal
Music*



GRACE D. ROBERTS
*Professor of Piano
and Pipe Organ*



LEILA M. HOUSER
Matron of Wright Hall



H. O. ABERNETHY
*Special Representative of the
Board of Trustees*



CHESTER A. ROBINSON, A. B.
Assistant Secretary of Alma College



A. EUARDA McCRAY, B. S.
Secretary to the President



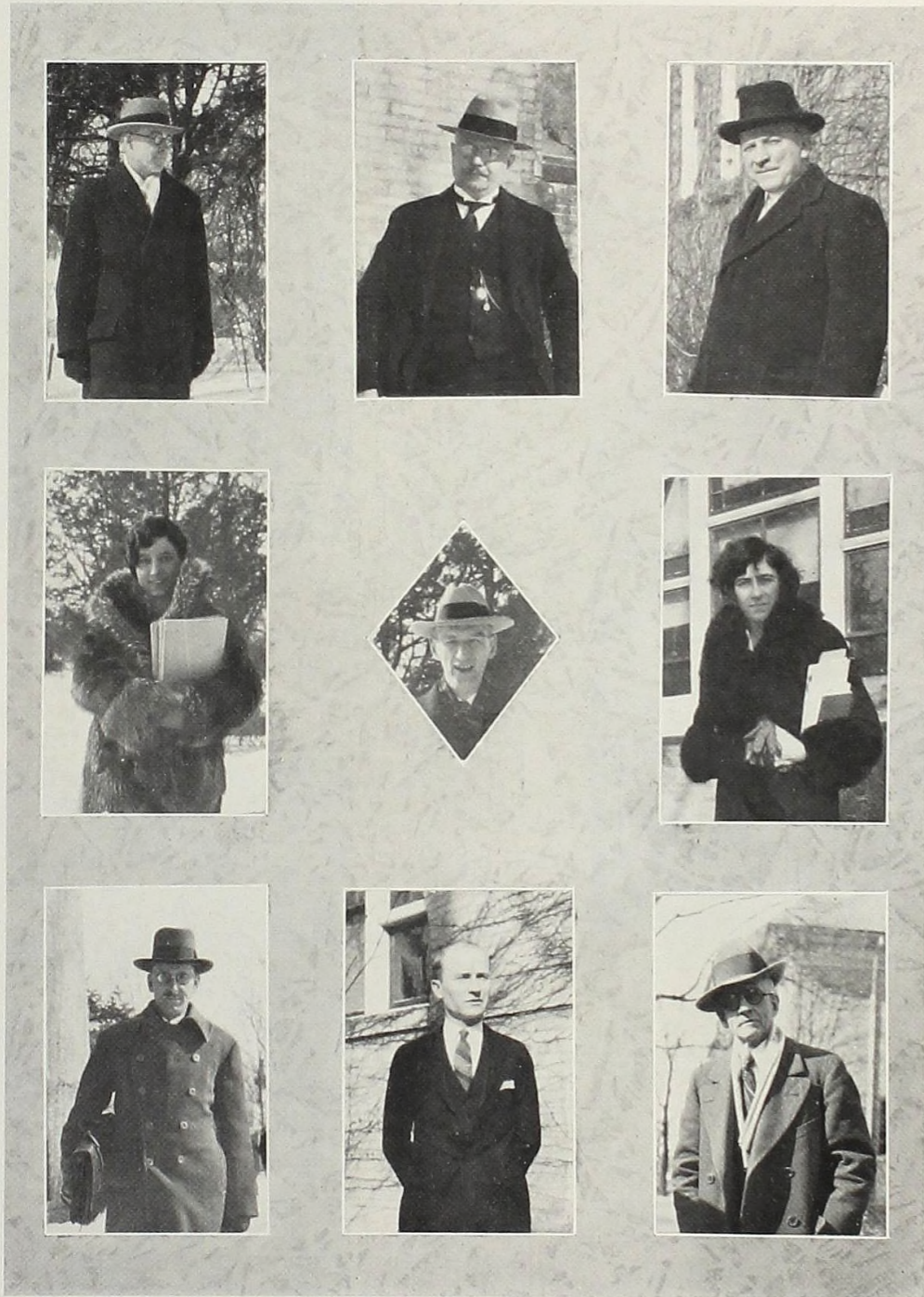
ANNETTE PERSIS WARD, A. M.
*Librarian and Professor
of Library Methods*



HELEN A. WOLTER, A. B.
Assistant to the Librarian



ANNA M. ANGELL, B. S.
Assistant to the Librarian



Classes

— SENIORS —



JOHN ALBIN—"Jack"
"Small bodies with velocity have a greater momentum than large masses without it."—Bacon.

HURANT AROZIAN—"Chief" *Zeta Sigma*
 Student Council, 3, 4; Football, 2, 3, 4; Basketball, 4.
"Ambition is the germ, From which all growth of nobleness proceeds."—English

HOMER BARLOW *Zeta Sigma*
 Phi Sigma Pi, 3, 4—President 4; Student Council, 1, 4—President, 4; Almanian—Business Manager, 3, Editor, 4; Glee Club, 1, 2, 3, 4—President 4; Quartet, 1, 2, 3, 4; Band, 3; Debate, 1, 2, 3, 4; Oratory 1, 2, 3, 4—First Place in State Contest, 4.
"Uneasy lies the head that wears a crown."—Pope

EDNA BOYD *Tau Sigma Gamma*
 President of Tau Sigma Gamma, 4
"Love, sweetness, goodness, in her person shin'd."—Milton

DALE DAWSON *Phi Phi Alpha*
 Drama Club, 1, 2; Band, 1, 2; Phi Phi Alpha—President, 4, Secretary, 2, House Manager 3, Representative to Phi Alpha Pi, 4.
"For me . . . I hold no commerce with despair."—Dawes

JOHN DELEVAN *Beta Tau Epsilon*
"What he says You may believe, and pawn your soul upon it."—Shirley

KATHLEEN ELLISON—"Kay" *Alpha Theta*
 Drama Club, 3, 4; Alpha Theta—Secretary, 4; Le Cercle Francais, 4.
"She is pretty to walk with, And witty to talk with."

CHARLES GOODENOW—"Chuck" *Phi Phi Alpha*
 Student Council, 3; Phi Phi Alpha—President, 4; President of Inter-Fraternity Council, 4; Basketball, 4.
"Tho' modest, on his unembarrassed brow Nature had written . . . Gentleman."—Byron

— SENIORS —



ALEX HENDERSHOT
"All smiles, and bows, and courtesy was he."—Watson

MERRIEL HENDERSHOT *Phi Phi Alpha*
 Phi Sigma Pi, 3, 4; Drama Club, 3, 4; Glee Club, 2, 3, 4; Debate, 3; M. I. A. A. Representative, 4; Phi Phi Alpha—President, 4.
"He left a name, at which the world grew pale, To point a moral or adorn a tale."—Johnson

EVERETT HIGHLAND—"Ev" *Zeta Sigma*
 Zeta Sigma—Secretary, 4; Football, 4; Baseball, 3, 4.
"A truer, nobler, truer heart, More loving or more loyal, never beat Within a human breast."

HAROLD HOBART—"Hobie" *Zeta Sigma*
 Class Treasurer, 4; Football, 3, 4.
"Describe him who can, An abridgement of all that was pleasant in man."—Goldsmith

CONSUELO HOPKINS *Tau Sigma Gamma*
"Gentle and true, simple and kind was she, Noble of mien, with gracious speech to all."

EDWARD HORN—"Ed"
 Glee Club, 4; Football, 3, 4; Debate, 4.
"He was the mildest mannered man That ever scuttled ship or cut a throat."—Byron

LAURA HURST *Alpha Theta*
 Assistant to the Registrar, 3, 4.
"You smiled upon me, and I thought it was spring, and my heart put forth the flowers of Hope."—Petrarch

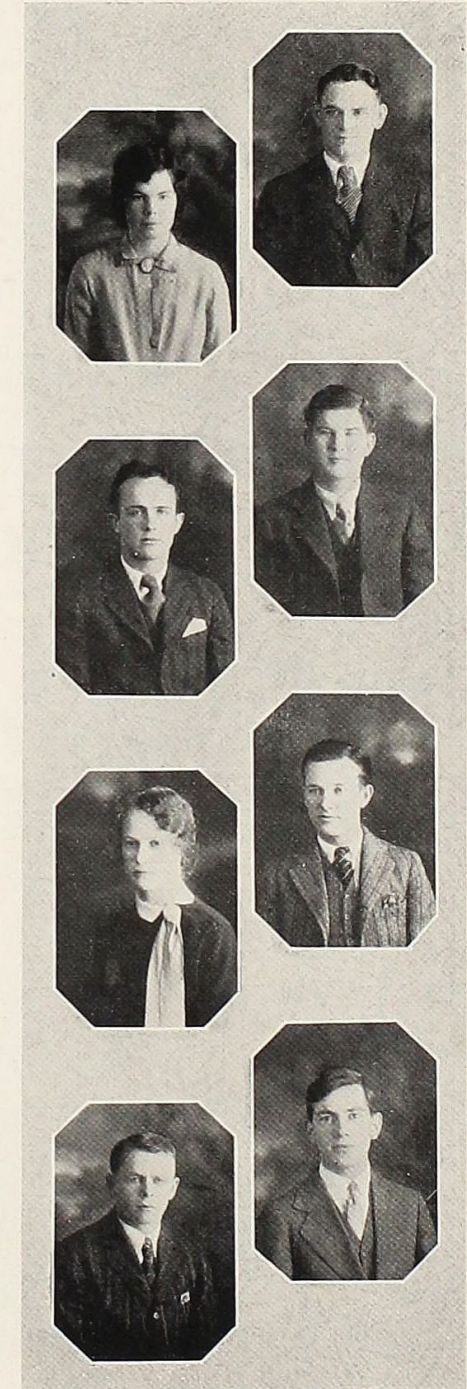
THOMAS JACKSON—"Tommy" *Beta Tau Epsilon*
 Beta Tau Epsilon—President, 4.
"He has, I know not what, Of greatness in his looks, and of high fate, That almost awes me."—Dryden

— SENIORS —



- MARY JOHNSON *Alpha Theta*
Alpha Theta—President, 4.
*"If to her share some female errors fall,
Look to her face, and you'll forget them all."*—Pope
- GORDON LAMB—"Gordy" *Zeta Sigma*
Student Council, 4; Glee Club, 4; Football, 1, 2, 3, 4; President of the Athletic Association, 4.
"Sigh no more, ladies, sigh no more."—Shakespeare
- KATHERINE LEHNER—"Kay" *Kappa Iota*
Glee Club, 1, 2, 3, 4—Business Manager, 4; Y. W. Cabinet, 4; Kappa Iota President, 4; Le Cercle Francais, 4.
*"Her voice was like the warbling of a bird,
So soft, so sweet, so delicately clear."*—Byron
- CHARLES MANN—"Charlie" *Zeta Sigma*
Student Council, 4; Glee Club, 4; Zeta Sigma—President, 4; Business Manager of Almanian, 4; Football, 3, 4; Basketball, 3, 4; Track 2, 3, 4.
*"He is so full of pleasing anecdote,
So rich, so gay, so poignant in his wit,
Time vanishes before him as he speaks."*—Baillie
- JESSIE PLATT—"Jess" *Philomathean*
Philomathean—President, 4, Treasurer, 4, Secretary, 3.
*"Her voice was ever soft,
Gentle and low, an excellent thing in woman."*—Shakespeare
- MARGARET REYNOLDS—"Peg" *Alpha Theta*
Drama Club, 4; Le Cercle Francais, 4.
*"How eloquent in every look—
Thro' her expressive eyes, her soul distinctly spoke."*—Lytleton
- MARGARET ROBERTS—"Peg" *Philomathean*
Phi Sigma Pi, 3, 4; Drama Club, 3, 4; Glee Club, 3, 4; Sextette, 4; Class Secretary, 4; Philomathean—President 4; Vice-President, 3.
"She could sing away sorrow as she would."—Cervantes
- LEWIS SALMON—"Prexy" *Alpha Theta*
Student Council, 3, 4—Secretary, 4; Senate 3, 4—President, 4; Glee Club, 1, 2, 3, 4—President, 4; Sextette, 1, 2, 3, 4; Y. W. Cabinet, 2, 3; Oratory, 3, 4; Alpha Theta—Secretary, 2, Vice-President, 3; Class Secretary, 1; Le Cercle Francais, 4.
"She moves a goddess and she looks a queen."

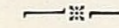
— SENIORS —



- GILBERT SCHEIB—"Gil" *Beta Tau Epsilon*
Student Council, 2, 3; Beta Tau Epsilon—President, 4; Class President, 2; Delegate to Model Assembly of League of Nations, 3; President of International Relations Group, 4.
*"You have deserved
High commendation, true applause, and love."*—Shakespeare
- ELIZABETH SIDEBOTHAM—"Liz" *Alpha Theta*
Phi Sigma Pi, 3; Senate, 2, 3, 4; Drama Club, 1; Y. W. Cabinet, 1, 2, 3; Alpha Theta—President, 4, Secretary, 2.
"Time cannot wither her, nor custom stale her infinite variety."—Shakespeare
- WILTON THOMPSETT—"Brody" *Beta Tau Epsilon*, 1, 2, 3.
"I'm willing to be convinced, but show me the man that can do it."
- MAX THOMPSON—"Kayo" *Zeta Sigma*
Zeta Sigma—President, 4; Football, 4.
"A little lad, but a sizeable man."—Anon
- PAUL WESTFALL—"Jake" *Zeta Sigma*
Glee Club, 2, 3.
"Did nothing in particular, and did it very well."
- GERTRUDE WILLIAMS—"Gert" *Alpha Theta*
Glee Club, 1, 2, 3, 4, Business Manager, 3; Alpha Theta—Treasurer, 3.
*"She was like
A dream of poetry, that may not be
Written or told—exceeding beautiful!—
And so came worshipers."*—Anon
- LOUVAN WOOD *Beta Tau Epsilon*
Phi Sigma Pi, 3, 4; Beta Tau Epsilon—President, 4.
"He is very great in knowledge."
- LOUIS ZIMMERMAN—"Louie" *Phi Phi Alpha*
Cheer Leader, 1, 2, 3, 4; Director of Physical Education, 4; Phi Phi Alpha—Vice-President, 4.
"Whose small stature lodged a mighty mind."
- LOIS GRIERSON *Philomathean*
Phi Sigma Pi, 4—Vice-President, 4; Philomathean—Secretary, 3; Recipient of Michigan Fellowship, 4.
"To know her is to love her."



Class of 1929



THE class of '29 entered the portals of Alma College in the conventional way, and were soon hurled into active college life. First came the flag rush, the flag being of double burlap, which the Sophs guarded only too well. Then members of '29 made their appearance in bright new "green pots," and tipped, and tipped again, to any upper classman that appeared. (And one always appeared!) The Freshman class elected as their officers: Jack West as president, Helen Kreuger as vice-president, Lewis Salmon as secretary, and Charles Goodenow as treasurer.

The one social activity of our Freshman year was the Frosh Formal which was successful, socially, but not financially. In the spring, there was the tug-of-war across the Pine, and then, soon, came the day for the big bonfire, and green pots, all initialed and ink-streaked, were hurled into the blaze and soon Frosh days were over, forever.

Our Sophomore year was a rather calm and uneventful one in which we paid off our debts, and tried a little bit of everything in college life to find out what it was all about. The officers of this year were Gilbert Scheib as president, Marian Jenks as vice-president, Gertrude Melody as secretary, Ross Mitchell as treasurer.

Then came the Junior year, a real striving for scholastic attainments, and a general feeling of earnestness, in study and social activities. The outstanding event of the year was the J-Hop, which proved to be a great success socially, as well as artistically and financially. The officers of the class were Charles Goodenow as president, Gertrude Melody as vice-president, Kathleen Ellison as secretary and Merriel Hendershot as treasurer.

In our Junior year, also, it was that the honor society, Phi Sigma Pi, was organized, and six of our number became charter members, namely: Homer Barlow, Merriel Hendershot, Ross Mitchell, Margaret Roberts, Elizabeth Sidebotham and Louvan Wood.

And then, dignified Seniors at last!

A Skip Day in the fall was our first activity. Memories still linger of steaming hot coffee and fried cakes, of the brave few who dared the cold water of Bass lake and of the good ol' baseball game. The officers elected for the Senior year were Gordon Lamb as president, Katherine Lehner as vice-president, Margaret Roberts as secretary and Harold Hobart as treasurer.

The class of '29 contributed its share of participants in college activities; in athletics, dramatics, the Men's Glee Club, the Girls' Glee Club, the band, and other activities, members of '29 were represented.

And when we've come to the last class and the last day,

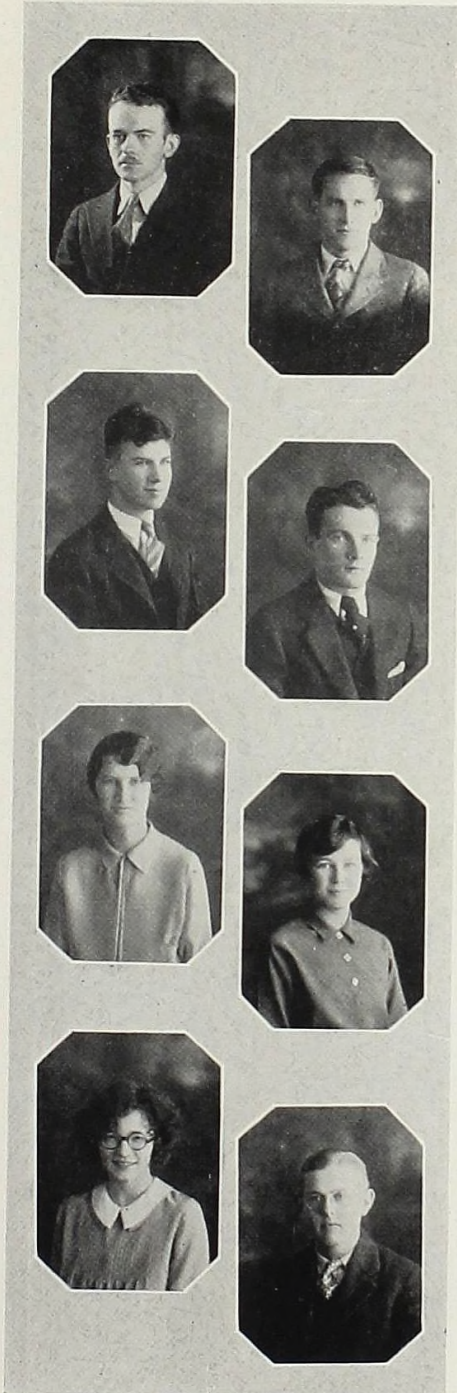
"In the praise of glorious days

Pledged in hearts devotion"

the class of '29 will ever be true, for

"We'll remember Alma."

— JUNIORS —



DAN ADAMS
Drama Club, 2, 3; Band, 1, 2, 3—President, 3.
"No man like him the horn could sound."
—Wordsworth

JAMES ALBAUGH—"Jim" *Zeta Sigma*
Football, 1, 2, 3; Basketball, 1, 2, 3; Baseball, 1, 2.
"In close fight, a champion grim."—Scott

RUSSELL AMOS—"Russ" *Phi Phi Alpha*
"Quietude is the most profitable of things."
—Aeschylus

FRANK ANGELL *Zeta Sigma*
Student Council, 2, 3; Oratory, 1, 2; Debate, 1, 2, 3; Class President 2; Football, 1, 2, 3; Maroon and Cream Staff.
"He speaks reservedly, but speaks with force, Nor can one word be changed but for a worse."
—Pope

IRENE BEUTHIN—"Rene" *Philomathean*
Phi Sigma Pi, 3; Student Council, 2, 3; Senate, 3; Drama Club, 1, 2; Y. W. C. A. 1, 3—President 3; Maroon and Cream Editor, 3.
"By virtue first, then choice, a Queen, Tell me, if she were not designed, Th' eclipse and glory of her kind."
—Sir H. Wotton

KATHRYN BOYD—"Kay"
Philomathean, 1, 2; Senate, 2; Drama Club, 3; Glee Club, 3; Sextette, 3; Le Cercle Francais, 3.
"Ae smile o' her wad banish care."—Burns

MARY KAY BURT *Philomathean*
Phi Sigma Pi, 3; Senate, 1, 3; Drama Club, 1, 2, 3; Glee Club, 1, 2, 3; Sextette, 2, 3; Y. W. C. A., 1; Oratory, 1, 2, 3.
"Ease in writing flows from art, not chance."
—Pope

HORACE BURTON—"Hort" *Zeta Sigma*
Maroon and Cream Staff.
"To draw true beauty shows a master's hand."
—Dryden

— JUNIORS —



MARGARET BYER
"A good woman is always quiet rather than talkative."
—Plautus

FRANCES CAMERON—"Fran" *Kappa Iota*
Albion College, 1, 2; Drama Club, 3; Y. W. C. A., 3; Debate, 3.
"Her charms strike the sight, And merit wins the soul."—Pope

ANN MARIE CAMPBELL *Alpha Theta*
Senate, 3; Y. W. C. A., 2.
"A man had given all other bliss, And all his worldly worth for her."
—Tennyson

HILDA CASHMORE—"Hil"
Kappa Iota, 1, 2; Senate, 3; Y. W. C. A., 2.
"Thou hast so much wit and mirth about thee."
—Addison

CARSON CLAPP
"The long, loud laugh, sincere."—Thomson

FRANCES COLWELL—"Fritz" *Alpha Theta*
Phi Sigma Pi, 3; Senate, 2; Y. W. C. A., 2; Maroon and Cream Staff.
"But so fair, She takes the breath of man away Who gazes on her unaware."—Browning

MARIAN CRIPPEN *Kappa Iota*
"The quiet mind is richer than a crown."
—Greene

MAURINE DAKIN *Philomathean*
Drama Club, 2, 3; Le Cercle Francais, 3.
"I cannot lose a world for thee, But would not lose thee for the world."
—Anon

- JUNIORS -



CLIFFORD ERICKSON—"Red" *Zeta Sigma*
Glee Club, 2, 3; Football, 1, 2, 3.

"A young man that blushes is better than one who turns pale."

THEODORE FINKELSTEIN—"Ted"
"An honest man, and plain."—Shakespeare

KENNETH FORBES—"Ken" *Zeta Sigma*
"Ay, every inch a king."

EDWIN FRITZ—"Ed" *Phi Phi Alpha*
"His greatness, not his littleness, concerns mankind."

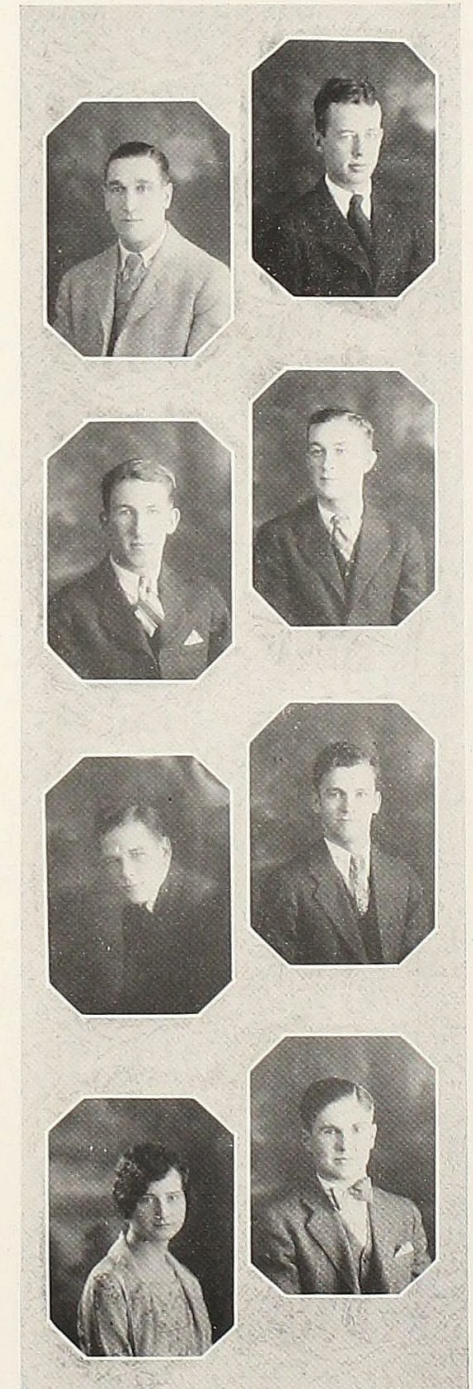
BARBARA GLASS—"Barb" *Alpha Theta*
"So unaffected, so composed a mind."—Pope

DAVID GOLDEN—"Goldy"
Football, 1, 2, 3; Basketball, 2, 3; Baseball, 1, 2; Maroon and Cream Staff.
"A man he seems of cheerful yesterdays And confident tomorrows."—Wordsworth

LENA HALL *Kappa Iota*
Kappa Iota—President, 3; Drama Club, 3; Debate, 3; Le Cercle Francais, 3.
"A disposition to happiness."—Morley

DONALD HORTON—"Don"
Drama Club, 2, 3—President, 3; Glee Club, 2, 3; Band, 1.
"On the stage he was natural, simple, affecting."—Goldsmith

- JUNIORS -



GEORGE KAISER *Zeta Sigma*
Student Council, 3; Student Manager of Athletics, 3.

"And oh! he had that merry glance That seldom lady's heart resists."—Scott

EDGAR KARPP—"Ed" *Zeta Sigma*
Glee Club, 1, 2, 3; Football, 1, 2, 3—Captain 3; Basketball 1, 2, 3—Captain, 3; Maroon and Cream Staff.
"On him the light of praise shall shine forever."—Wordsworth

FRED KLEREKOPER—"Freddy" *Phi Phi Alpha*
Band, 1, 2, 3.
"He has the countenance of a cherubim, but he is a rogue in his heart."—Vanburgh

CLARK KNAPP—"Al"
Baseball, 1, 2.
"A good heart is better than all the heads in the world."—Lyton

HAROLD LOGAN—"Adolph" *Zeta Sigma*
Phi Sigma Pi, 3; Student Council, 1, 2; President of class, 1; Football, 2; Business Manager of Maroon and Cream, 3; Silliman scholarship; Associate Editor of Almanian, 3.
"A reasoning, self-sufficing thing, An intellectual All-in-All."—Wordsworth

DELBERT MACGREGOR—"Dobber" *Phi Phi Alpha*
Football, 1, 2, 3.
"What peaceful hours I once enjoyed."—Cowper

DONALD MCFARLAND—"Don" *Zeta Sigma*
Track, 1, 2.
"For he that runs it well runs twice his race."—Cowley

ELIZABETH MARTIN—"Betty" *Philomathean*
Y. W. C. A. 2, 3; Maroon and Cream Staff.
"A sweet, attractive kind of grace."—Royden

- JUNIORS -



HELEN FRANCES MILLER—"Spike" *Kappa Iota*
Phi Sigma Pi, 3; Senate, 3; Glee Club, 3; Maroon and Cream Staff; Le Cercle Francais, 3; President, 3; Brownell scholarship.

*"To those who know thee not, no words can paint!
And those who know thee, know all words are faint!"*

JOHN MITCHELL—"Jimmy" *Zeta Sigma*
Maroon and Cream Staff.
*"The force of his own merit makes his way."
-Shakespeare*

WILLIAM OWEN—"Bill" *Phi Phi Alpha*
Drama Club, 2, 3.
*"Far may we search before we find
A heart so manly and so kind."-Scott*

WALTER PEZET—"Wally" *Zeta Sigma*
Student Council 3; President of Class, 3; Glee Club, 1, 2, 3; Football, 1, 2, 3; Basketball, 2, 3.
*"His limbs were cast in manly mold
For hardy sports or contests bold."-Scott*

LELAND POMEROY—"Pom" *Phi Phi Alpha*
Band, 1, 2, 3; Maroon and Cream Staff; Le Cercle Francais, 3.
*"One universal smile it seemed of all things;
Joy pass compare."-Cary*

WILLIAM RANDELS—"Bill" *Phi Phi Alpha*
Phi Sigma Pi, 3.
"Of virtuous father, virtuous son."-Milton

LESLIE ROWLAND—"Les" *Beta Tau Epsilon*
Drama Club, 1.
*"Whose armor is his honest thought
And simple truth his utmost skill."
-Worton*

HERMAN RICK—"Zippy" *Beta Tau Epsilon*
*"How modest, kindly, all-accomplished, wise."
-Tennyson*

- JUNIORS -



WINSTON THOMAS—"Win" *Beta Tau Epsilon*
Band, 3; Track, 1, 2, 3; Maroon and Cream Staff.
*"The learn'd is happy, nature to explore."
-Pope*

RALPH VANDEVENTER—"Van" *Zeta Sigma*
Football, 1, 2, 3.
*"Sport went hand in hand with Science."
-Tennyson*

WESLEY WAGONLANDER—"Wes" *Phi Phi Alpha*
*"What better fare than well content?"
-Tusser*

GERALDINE WALKER—"Gerry"
*"Good sense, which only is a gift of heaven
And tho' no science, fairly worth the seven."
-Pope*

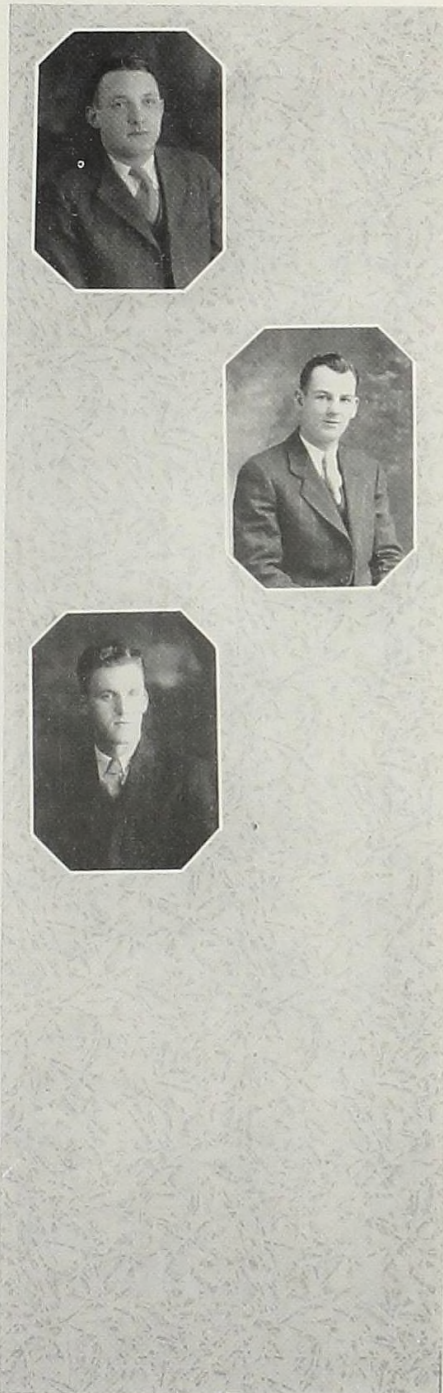
FRANCES WIDGER—"Spuddy" *Kappa Iota*
Senate 3.
*"In small proportions we just beauties see
And in short measures life may perfect be."
-Jonson*

CARL WISE *Phi Phi Alpha*
Albion College, 1, 2; Band, 3.
*"Large was his bounty, and his soul sincere."
-Gray*

BARBARA WITKOP—"Babe" *Alpha Theta*
Glee Club, 2, 3; Y. W. C. A., 3.
*"She was a phantom of delight."
-Wordsworth*

FRANCIS WOOD—"Frank" *Phi Phi Alpha*
Maroon and Cream Staff; Le Cercle Francais.
*"Full well they laughed with counterfeited glee
At all his jokes, for many a joke had he."
-Goldsmith*

— JUNIORS —



VERNON KITTENDORF—"Buff" *Zeta Sigma*
 Football, 2, 3.
"Who broke no promise, served no private end."
 —Pope

LOWELL VEEDER
 Football, 2, 3.
"Thou art long, and lank, and brown."
 —Wordsworth

ELLSWORTH SIMMONS—"Brute" *Zeta Sigma*
 Football, 1, 2; Basketball, 1, 2, 3; Coach,
 Freshman Basketball, 3.
*"Invincible, impregnable - - -
 a sign to his foes of fear."*—Swinburne

PAUL BENNETT
 Phi Phi Alpha, 1, 2; Drama Club, 1.
"Much had be read - - -"—Armstrong

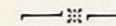
WILLIAM YAGEMAN—"Bill"
 Baseball, 1, 2.
"He also must be such a lady's scorer."
 —Browning

WILFRED SCHEIFLEY *Beta Tau Epsilon*
"A soul as full of worth, as void of pride."
 —Pope

EUGENE WAGNER—"Gene"
 Football, 2, 3; Basketball, 1, 2, 3; Baseball, 1, 2.
"A player unequalled - - a sportsman complete."
 —Whyte-Melville

LUCILLE WILLIAMS
 Secretary to the Dean.
"A face with gladness overspread."—Wordsworth

Junior Class



WHEN Alma's portals were thrown open in the fall of 1926, one hundred and ten Freshmen rushed through with so much vigor that the Sophomores trembled and the upper classmen were awe-stricken. And, straightway, and with some abruptness, the fears of the Sophs arose when the wearers of the green escaped a jail and came to town in time to pull down the flag in ninety seconds, stop-watch time.

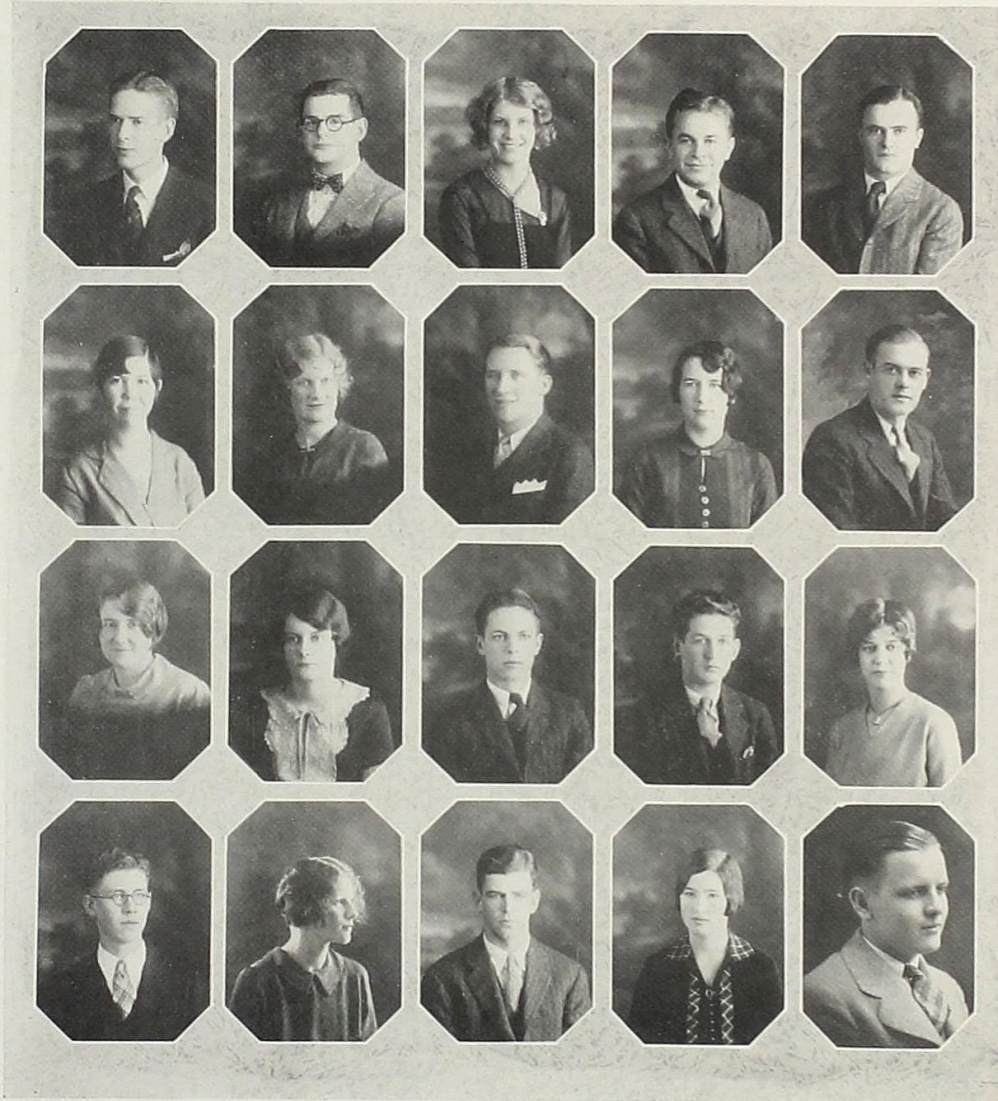
Seeing that leadership was necessary, Hogan and Snell, those willing representatives of the Student Council, suggested an election and, after much wrangling and gnashing of teeth, Arthur Schartow was called upon to be our first president. Not being able to stand the gaff, he left school and Harold Meade Logan, the whizz from Niles (his fame preceeded him), ascended the popular throne. Then came the dance (a financial success), the pajama parade, pot-night, and a first and last bath in the Pine. Sunday night church was very entrancing until the janitor forgot to turn on the heat when the air grew cold.

From the beginning, the boys of '30 were prominent in bringing the banners to Alma. Our huskies helped win the football banner, honors in other sports, and made Alma a school to be feared by the other Michigan colleges. Angell won oratorical honors and Coach Spencer used several of the new men as first stringers on the debating squad. Erickson was acting janitor of Pioneer, serving under Gunther.

At last corruption crept in and we engaged in the novel pastime of another class election. This time, after two attempts, Francis Angell was selected to lead the hopefuls in the second year. That the old pep was still there was shown by the washout of the Frosh in the flag-rush of '27. The new wearers of the green were given a bath in the tug of war, and pot-night was no dry season for the "inglorious class of '31." And who can forget Gil and his no-paddling crew as they paraded around the gym that night?

But, alas! All good things must end. The boys gathered all their proxys and, after an invasion of Prof. Clack's room, amid a noticeable lack of co-operation and knowledge of Hoyle or Roberts, Wally Pezet was chosen to lead us as Juniors. But "All's well that ends well," and, when some of the boys threatened to "take their votes and go home," the members of '30 responded, put over a J-Hop that has never had an equal, and, acting upon a popular theory that it is possible only every other year, put out the bi-annual bug of Alma College, the Maroon and Cream.

Altogether, with Wood's punk serenades, Monday morning vaudevilles, and Adolph's service for ladies, the Juniors have survived another year without any gross tragedies. Now we are looking forward to one more year of social training before we take the world upon our shoulders, the task laid out for us in June, 1930.



SOPHOMORES

- | | | | | |
|-------------|------------|-------------|--------------|-----------|
| F. Anderson | C. Bates | M. E. Block | K. Bloom | H. Boutin |
| H. Bowker | B. Bremer | R. Buchanan | H. Carrow | C. Carter |
| D. Carter | M. Childs | A. Dean | D. Dickinson | E. Glass |
| L. Harris | E. Hawkins | W. Heartt | N. Henricks | A. Hicks |



SOPHOMORES

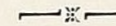
- | | | | | |
|------------|------------|-------------|-----------|----------|
| V. Hillman | H. Holland | M. Holmes | E. Hurst | J. Hyde |
| A. Joyce | V. Kennett | J. LaFata | L. Lange | F. Lau |
| L. Leyrer | E. Ling | O. McGarity | G. Martin | M. Mason |
| A. Mileski | C. Miller | H. Monroe | C. Neff | D. Noyle |



SOPHOMORES

- | | | | | |
|-------------|-------------|-------------|-----------|-----------|
| J. Peterson | A. Ruddock | P. Schepers | C. Seidel | T. Sharpe |
| I. Spencer | R. Spencer | E. Sprague | J. Taylor | M. Toomey |
| C. Tromater | G. Walker | H. Wheaton | V. White | |
| | G. Phillips | P. Wrench | | |

Sophomore Class



AFTER a supreme and serene twelve years' trial at Education, the class of '31 matriculated into green hats and the chaos of higher learning. With head held high and a bright nod to all, they lived on top of the world until the flag rush, with its terrible rules and expensive tickets, loomed upon the scene. Then, with dark forebodings and furtive looks at all without green hats, the plans were made. A perfect midnight getaway foretold of a successful campaign. The next night, under the more or less loyal and helpful guidance of Jack and Harry, the wandering Frosh missed their truck and those who were not walking in from Harrison arrived on the scene of battle to find the enemy camp empty, and the enemy all through breakfast. Not a blow was struck in the vain attempt to gather in the proud "Sops'" colors.

The next big event was the class elections, held amid the turmoil of the first class meeting. "Bret" Heartt was elected as president, Gertrude Walker as vice-president, Flora Lau as secretary, and Lyle Kinney as treasurer.

Then the class settled down to exist until the season's big social event (for the Frosh), the Frosh Frolic. This was a big social success, but, as usual, a great financial loss. The class wondered what to do with the debt; and left it wondering.

Came the spring; and high water in the Pine. The Frosh all came out to see whether they would get their annual bath now or after the water got warmer. They got it early.

The daze of "Pot Night" left the Frosh days of freedom to wonder who had stolen their "pots" until the light of understanding would break upon them and they would dash gleefully to class bareheaded.

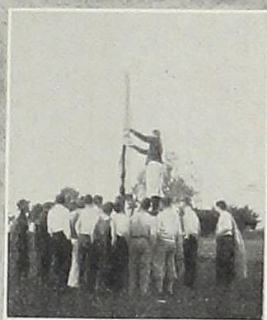
The spring elections with their politics came to put Alex Milne in the president's chair, Ida Spencer as vice-president, Flora Lau as secretary, and Leslie Harris as treasurer.

The fall of '28 dragged its weary way around and, in high expectations, the new class of upright and honorable Sophomores entered the school. Half the glory of the new distinction was lost in the clouds of gloom that came with the words, "No Kidnapping."

With unavoidable odds against them, the Sophs were downed in the flag rush and the new wearers of the green gained the coveted bit of canvas rag that hung limply from the pole.

Since Alex Milne did not return to school, a new election put Charles Miller in the president's position.

After the "home coming" parade was over, and the prize-winning float "Russian Thru Albion" was dismantled, the class again settled down to wonder what it was going to do about its debt, and to hibernate until spring.



FRESHMEN

- | | | | | |
|------------|----------------|-------------|-------------|------------|
| H. Fales | W. Elder | M. Elden | B. Edgerly | G. Eaton |
| C. Dakin | R. Custer | H. Crooks | A. Crawford | J. Cook |
| O. Collier | V. Burton | V. Burchill | B. Brown | P. Boyd |
| G. Blocker | F. Biddlecombe | D. Barstow | W. Ballard | H. Asselin |



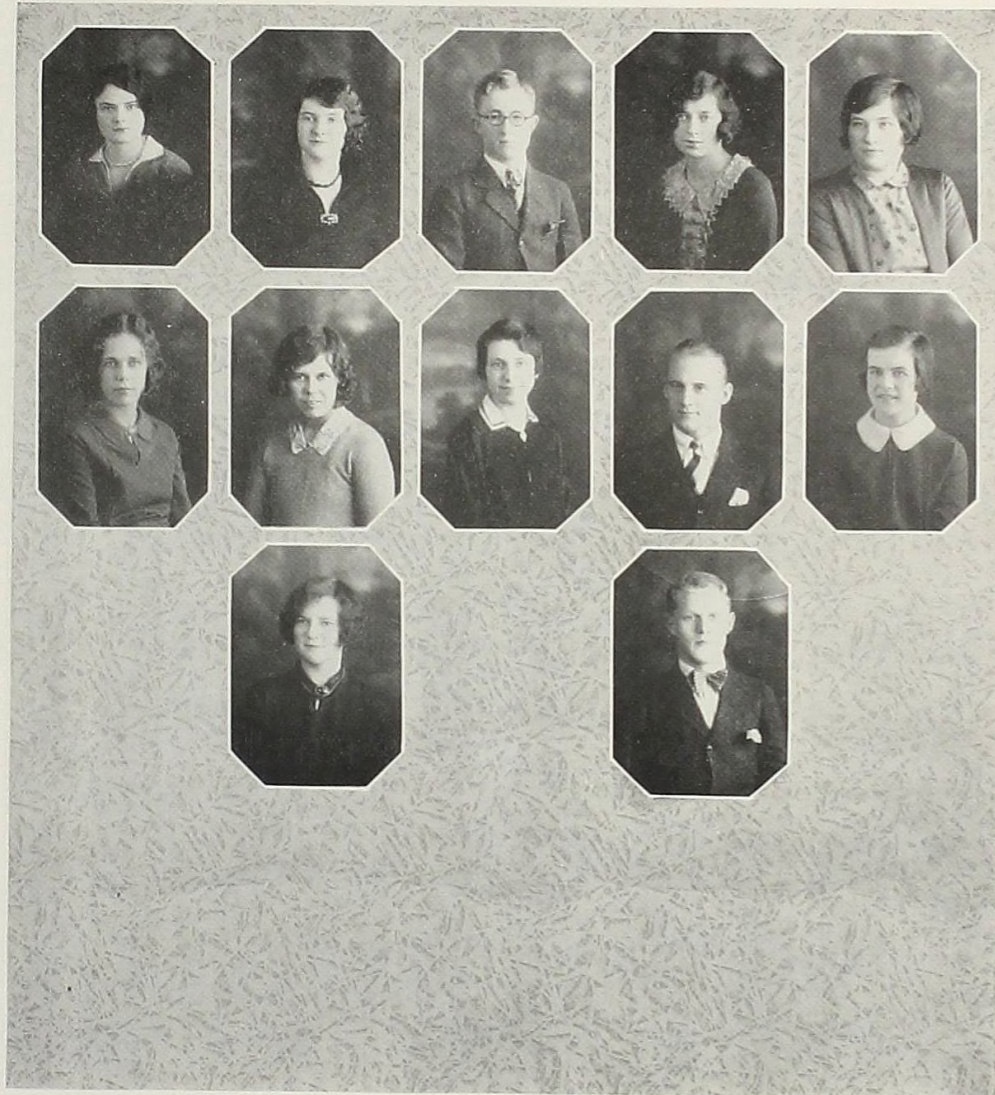
FRESHMEN

M. Angell	R. Faude	K. Fischer	M. E. Forshar	E. Frost
M. Garvey	M. Gesner	E. Gilbert	P. Gray	R. Greve
J. Grogan	R. Harwood	E. Hayden	N. Helberg	R. Hileman
M. Hopkins	M. Ingold	C. Jamieson	M. Joiner	B. Kemler



FRESHMEN

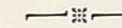
J. Koechlein	L. Layman	S. Littleton	H. Logan	H. Long
E. Lyman	W. MacCurdy	M. Mackenzie	D. McLellan	M. McMillan
C. Moore	M. Morrison	R. Nestle	H. Nugent	J. Hause
R. Parker	A. Potter	H. Potter	D. Prouty	R. Randels



FRESHMEN

- | | | | | |
|-------------|----------------|-------------|-------------|-------------|
| M. Schaefer | I. Scott | G. Shelledy | M. Smith | M. Southern |
| H. Temple | H. Timmerbacka | L. Waider | H. Wehrly | C. White |
| | M. Wilcox | | J. Williams | |

Freshmen Class



THE Class of '32 arrived in all verdant splendor at the gates of Alma College on September 16, 1928. On every side was extended the right hand of good fellowship—for the first few days. Teas, parties, and more teas! Then we met and elected officers. Harry Wehrly was elected president, Helen Logan vice-president, Ila Scott secretary, and Clarence Moore treasurer.

One wet morning at seven o'clock, we showed our distinct superiority by capturing the Sophomore flag. That ignoble class did everything in its power, even to throwing flour in the faces of the oncoming Frosh, but all to no avail. The green was victorious.

The Pajama Parade was a big event in our young lives, but not as big as it has been to former classes of Freshmen, we are told, when the men used to hold a little party of their own after the parade was over. We thank heaven, and the faculty, that the days of barrel-staves are gone.

Everything else, however, was overshadowed by our one, big effort, the Frosh Frolic. It was unquestionably a success. The gym was decorated in green and white, (we worked long hours on it), and the music was great. In fact, everything went off in fine style and we had a glorious time.

Since those far-off days we have been accomplishing great things. Pledging turned out satisfactorily with no serious casualties, and then we settled down to campus routine with noble thoughts and good intentions.

We really think that Alma should be quite proud of her Freshmen. In athletics we have quite distinguished ourselves, to say nothing of drama, band, and glee clubs. We have two representatives in the men's quartet and a Freshman holds her own in the girls' sextette. That we had journalistic ability wasn't even questioned after we "had done our stuff" on the Frosh edition of The Almanian.

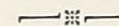
In spite of the fact that the upper-classmen do not seem to appreciate us, we expect in the future years to look back on this period of our college career with a great deal of pride and satisfaction.



The Class of '28

Ernest Bare	Malcolm Gobel	Louis Nickels
Helen Benson	Lorimer Grant	Charles Nims
Paul Bernd	Leslie Hawthorne	Alice Olson
Laverne Bixby	Erwin Hendershott	Melvin Orr
Pierce Boutin	Romaine Hogan	Robert Rice
Karlton Brown	Merrill Holdship	Frederick Riley
Gertrude Burch	Katharine Joiner	Charles Schaefer
Elizabeth Burgess	Frank Kinney	John Smith
Earl Closser	Bruce Knowles	Hannah Spencer
Isabel Craig	Erle Leichty	Marvin Stapleton
Lee Crooks	Kent MacGregor	Jack Thoma
Donald Darnell	Edwin MacKinnon	Kenneth Wolfe
Gilbert Davis	Carl MacManus	Lucille Wolfe
John Dawson	Inez Maurer	Helen Wood
Lauritz Drevdahl	Claude Morrow	Mrs. Grace Yoder
MacDonald Fowler	Charles Nelson	Treva Zinn
Ralph Frazer	Russell Neuman	

To the Class of '28



If for no other reason than that they put out one of the best annuals in the history of the college, the class of '28 deserves a eulogy here. It was edited by a very capable and charming young lady by the name of Helen Wood. The financial affairs pertaining to the book were ably administered by Jack Thoma, than whom there is no better business man.

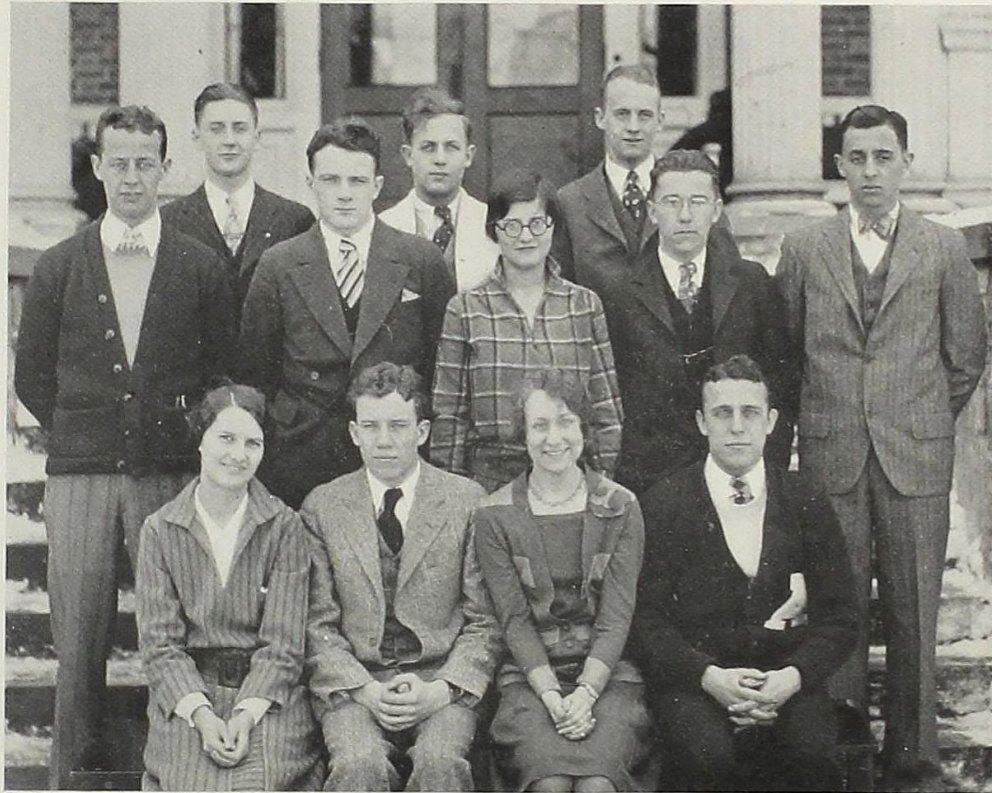
The class boasted of so many famous men (and women) that a page might well be devoted to each, if space only permitted. It would be unforgiveable, indeed, if we failed to recall to mind (though who can forget him) Doc Hogan, "head man" in the dining room and Student Council. Aside from their connections with the Maroon and Cream, Helen Wood and Jack Thoma also served as president of the Y. W. and president of the Senior class, respectively. Lorimer Grant, the "student" from Fremont, carried off all scholastic honors and was named the recipient of the Michigan Fellowship as well as being valedictorian of the class. Lucille Wolfe will be remembered as an excellent Y. W. president and an all around campus leader. When Pierce Boutin, the flute soloist for the glee club, graduated, Prof's. heart was broken and he didn't brighten up until Pierce's little brother, Pete, came along to fill the vacancy. Speaking of glee clubs, the inimitable "Pat" Olson, and Hannah Spencer, the most talented violinist the college has known, certainly are missed. In the line of athletes, the class of '28 contributed many to champion teams, notably Hawthorne, Holdship, and MacGregor to football, and MacManus to track. Helen Benson was one of the finest Senate presidents Wright Hall has ever known. "Deak" Closser did wonders to bring the Drama Club to life and establish it firmly on this campus. Lee Crooks edited an excellent Almanian and both Lorimer Grant and Jack Thoma tried their hands as business managers of the paper.

But why go on to enumerate the honors and great deeds of these people? In a few years one may find their names in "Who's Who" and there will be listed even greater achievements.

All in all, it was a great class, and the class of '30 takes off its hat and pays homage to the grand ol' class of '28.



Organizations



The Student Council

Homer Barlow	-	-	-	-	-	-	-	President
Lewis Salmon	-	-	-	-	-	-	-	Secretary
Hurant Arozian	-	-	-	-	-	-	-	Treasurer
Charles Mann	-	-	-	-	-	-	-	Marshall
Professor Roy Hamilton	-	-	-	-	-	-	-	Faculty Advisor
F. Angell	E. Frost	G. Lamb	C. Miller	J. Taylor				
I. Beuthin	G. Kaiser	M. Mason	W. Pezet	H. Wehrly				

THE Student Council, the student representative body on the campus, is formed each year through student vote and provides the student body with governing rulings and activities outside of the major sports and organization affairs.

In the year of '27-'28, the Student Council sent two representatives to the annual convention of Student Federations. They returned bringing a report on the troubles of other campuses, the greatest debate seeming to be over the advisability of adopting the honour system. Representatives were also sent, in the spring of the year, to the Model Assembly of the League of Nations which met at Michigan State College. Jean Gros' Marionettes were brought here by the council to present Maeterlinck's well-known play, "The Bluebird."

This year's council began its term by issuing an edict forbidding the corporal punishment of Freshman men. This was advised by the faculty. The Student Council also undertook the management of one chapel hour a week, which is known as the Monday Student Chapel. It has proved very interesting and this one chapel period is looked forward to each week by the students. The Stratford Players, a very excellent company, presented their drama, "Julius Caesar," under the auspices of the Council. Representatives were sent again this year to the Model Assembly of the League of Nations, held this time in Ann Arbor.



The Wright Hall Senate

President	-	-	-	-	-	Lewis Salmon
Secretary	-	-	-	-	-	Irene Beuthin

THE Wright Hall Senate was organized in 1922 for the purpose of co-operating with the Dean of Women in promoting the highest standards of honor and integrity in all matters of personal conduct, and to maintain order in Wright Hall. This, as a self-governing body, is composed of four girls from each class, representing the three societies, and a non-society representative. The president is chosen by a popular vote of the entire organization of Wright Hall girls.

In the seven years of its existence, the Senate has done much in the solution of problems arising in college life. Matters are brought before the organization, discussed, and a course of action voted upon. In this way, each girl becomes conscious of an added sense of personal responsibility for the standards and traditions of Wright Hall.



Phi Sigma Pi

PHI SIGMA PI, the honorary society of Alma College, was organized in the spring of 1928. Feeling the need of some such society to give recognition to those students doing the best scholastic work, President Crooks called a meeting of the six students having the highest averages in each of the Junior and Senior classes.

This group of students was in accord with the proposal to establish an honorary society and, with Jack Thoma as general chairman, various committees began work on the drawing up of a constitution, the working out of a suitable name for the organization, and the selecting of a desirable insignia for the members.

At the suggestion of Professor Brokenshire, the name Phi Sigma Pi, which, translated freely, means "We strive to excel in the love of knowledge," was adopted. A key was selected as a suitable insignia and a constitution was drawn up and adopted.

The students of the class of '28 who achieved membership in Phi Sigma Pi were: Jack Thoma, Lorimer Grant, Helen Benson, Elizabeth Burgess, Charles Schaefer, and Lucille Wolfe.

The students of the class of '29 to whom membership was granted were: Homer Barlow, who has been president of the organization this year, Margaret Roberts, Elizabeth Sidebotham, Ross Mitchell, Louvan Wood, and Merriel Hendershot.

The students to be honored this year were: Lois Grierson, Harold Logan, William Randels, Helen Frances Miller, Irene Beuthin, Mary Kay Burt, and Frances Colwell.

The members of Phi Sigma Pi hold in high esteem their recently established society, and sincerely hope that it may continue to serve in the future its purpose of encouraging scholastic endeavor and moral character among the students of Alma College.



The Drama Club

President	- - -	Don Horton
Vice-President	- Amos Ruddock	Treasurer - Joseph Taylor
Secretary	- Ann Mileski	Reporter - Frances Cameron
Program Committee Chairman	- - -	Merriel Hendershot

- MEMBERS -

Adams, Dan	Ellison, Kathleen	MacKenzie, Marian	Randels, William
Boyd, Kathryn	Grogan, John	Mason, Mary	Reynolds, Margaret
Buchanan, Robert	Hendershot, Merriel	McQuaid, Naomi	Roberts, Margaret
Burt, Mary K.	Hall, Lena	McQuaig, Donald	Ruddock, Amos
Cameron, Frances	Holmes, Mary	Mileski, Ann	Taylor, Joseph
Cook, John	Horn, Ed.	Moore, Clarence	Walker, Gertrude
Dakin, Maurine	Horton, Don	Owen, William	White, Vera
Dean, Allan	Logan, Helen	Prouty, Dorothea	Zimmerman, Louis

FOLLOWING the policy of former years, the Drama Club is continuing to produce three full length plays, with programs, also, of one-act plays. Last November the club presented "The Butter and Egg Man." On March 15th the club presented "Craig's Wife," to be followed with another production in May.

This year the Club felt the loss of graduated members but abundant new material was found. The Drama Club this year has held its place as one of the outstanding live-wire organizations on the campus, both by its high dramatic standards and by its prosperous career. The organization is fulfilling a definite need of the school in dramatic expression. Its work is entirely carried on by students as actors, directors, business managers, and stage managers. The club has earned a name for itself and is here to stay.



H. W. C. A.

President	- - - - -	Irene Beuthin
Vice President	- - - - -	Frances Cameron
Secretary	- - - - -	Dorothy Carter
Treasurer	- - - - -	Kathryn Boyd

CABINET MEMBERS

Helen Carrow	Helen Frances Miller
Katherine Lehner	Ida Spencer
Ernestine Ling	Gertrude Walker
Elizabeth Martin	Barbara Witkop

THE Y. W. introduced the Big-Sister movement in Alma last fall and tried to help the new girls to become better acquainted and very welcome at Wright Hall. The fortnightly meetings have been very inspirational and worthy of attendance. On different occasions Dean Steward, Mrs. Ewer and Miss Biondi have spoken to the group. One night in October, Y. W. sponsored a dinner for all the girls in the "Jungle." With eats, a bonfire, laughter, and comradeship, it was a great time. The week before Thanksgiving recess, the cabinet members and advisors were entertained at Mt. Pleasant by the Mt. Pleasant Y. W. A lovely and worth while time was experienced. We are very glad to have had the opportunity to have entertained them at Wright Hall in February. The annual Christmas party for the needy children of Alma was a great success, and enjoyed by the girls as well as the kiddies. Our annual Easter morning breakfast, for which the Y. W. decorated, seemed to be appreciated and enjoyed by the students. The activities of the year were brought to a close by a May Day dinner and a Silver Tea.



Tau Sigma Gamma

Asselin, Honor	Byer, Margaret	Noyle, Dorothy
Block, Mary Emma	Henricks, Neva	Nugent, Harriet
Bowker, Hazel	Hopkins, Consuelo	Southern, Marjorie
Boyd, Edna	Hopkins, Marian	Waider, Louise

IN November, 1928, Miss Annette P. Ward, after her recent trip to Europe, called together a group of non-society women under the name of Travel Study Group. Aside from our weekly meetings, once a month our club goes to the home of Miss Marjorie MacCurdy. Miss MacCurdy is a very able speaker and presents her talks on her students days in Paris in a very interesting way. We have heard Miss Banta and Prof. Clack in excellent speeches on subjects of interest to us. Our purpose is to see Europe through literature and books so that we can better appreciate it before going there.

On February 4, 1929, we formally organized under the name of Tau Sigma Gamma, planning to continue the program already mapped out. So far we have procured our passports, sailed the Atlantic, known the pleasures and hardships of ocean travel, landed, and have gone into Italy to take up the principal cities, visiting museums, art galleries, cathedrals, and other places of interest.



Zeta Sigma

— MEMBERS —

Albaugh, James	Dickinson, Dale	Karpp, Edgar	Pezet, Walter
Angell, Frank	Erickson, Clifford	Kittendorf, Vernon	Seidel, Clarence
Arozian, Hurant	Forbes, Kenneth	Lamb, Gordon	Simmons, Ellsworth
Barlow, Homer	Highland, Everett	Lange, Loren	Spencer, Richard
Boutin, Horace	Hobart, Harold	Logan, Harold	Thompson, Max
Burton, Horace	Hillman, Van	MacFarland, John	VanDeventer, Ralph
Carter, Clyde	Hyde, John	Mann, Charles	Westfall, Paul
Dean, Allan	Kaiser, George	Mitchell, John	

— PLEDGES —

Buchanan, Robert	Gray, Perry	McCuaig, Don	Shimmer, Fred
Budd, Robert	Heartt, Walter	Moore, Clarence	Tarrant, Gene
Byron, Floyd	Jamieson, Clark	Novak, Walter	Wehrly, Harry
Cook, Jack	Kennett, Vernon	Olmstead, Leslie	Williams, Carl
Crowell, Stephen	Kessel, Ben	Philips, Gerald	Williams, Jack
Fisher, Kermit	Kucera, Frank	Potter, Alden	

THE past year has been one of the most successful in the history of Zeta Sigma Fraternity. Her men have been unusually active in all phases of campus affairs. Many leaders in campus life, as well as members of athletic and forensic teams were her representatives. They have done much in every way to further the best interests of the College as a whole.

The Co-ed and Stag banquets were successful from all standpoints. The Co-ed banquet, especially, was acclaimed as being the finest held in Alma for many years.

The membership of the Fraternity was substantially increased by the initiation of several new men. These men show great promise and are expected to be a helpful influence in the future activities on the campus.



Alpha Theta

Drener, Beatrice	Glass, Barbara	Ling, Ernestine	Sidebotham, Elizabeth
Campbell, Ann Marie	Glass, Betty	Logan, Helen	Skimin, Elaine
Carrow, Helen	Hawkins, Emily	Long, Helen	Temple, Helen
Carter, Dorothy	Helberg, Norene	McQuaid, Naomi	Walker, Gertrude
Colwell, Frances	Hurst, Betty	Reynolds, Margaret	Williams, Gertrude
Elden, Mary	Hurst, Laura	Salmon, Louise	Witkop, Barbara
Ellison, Kathleen	Johnson, Mary	Schaefer, Mary	

THE days have been absorbed into a profitable year for Alpha Theta. The hay-ride for the new girls, although it rained, was really a sunshiny event. The pledging and initiating programs, with attractive special tables, declared to all that the Society is still "carrying on" and looking forward to years of finer being. Several teas were given in honor of the patronesses and pledges. The College as a whole enjoyed the Stag Dance sponsored by us in Wright Hall. During the past months the Monday evening meetings have taken as the chief part in their programs different aspects of Russian life.

"Haste thee, nymph, and bring with thee
Jest and youthful jollity;
Sport that wrinkled Care derides
And Laughter holding both its sides.
Come and trip it, as you go,
On the light fantastic toe."—Milton.

Such was indeed the spirit present at the Formal Banquet held at the Wright House with dancing at the Elk's Temple. It was a lovely party, for the Nymph of Jollity was there, and ate and danced with mortals. May the Nymph of Jollity use all her immortal powers and draw into Alpha Theta, from the coming year, all that is lovely, strengthening, and enlightening.



Phi Phi Alpha

MEMBERS

- | | | | |
|-------------|---------------|-------------|----------------|
| R. Amos | M. Hendershot | C. Miller | J. Taylor |
| K. Bloom | H. Holland | W. Owen | R. Wagonlander |
| C. Couse | H. Horning | L. Pomeroy | W. Wagonlander |
| D. Dawson | A. Joyce | W. Randeis | F. Wood |
| E. Fritz | F. Klerekoper | A. Ruddock | L. Zimmerman |
| C. Goodenow | D. MacGregor | P. Schepers | |

PLEDGES

- | | | | |
|-------------|-----------|--------------|-------------|
| D. Barstow | H. Fales | R. Harwood | W. MacCurdy |
| G. Blocker | E. Frost | J. Hause | H. Potter |
| B. Brown | R. Greves | J. Koechlein | R. Randels |
| A. Crawford | J. Grogan | J. LaFata | C. Wise |

ANOTHER year of intense activity in campus affairs has brought forth an unusual number of accomplishments and, at least, the customary number of disappointments, all of which have tended to form a very well balanced school year for Phi Phi Alpha.

Our smoker, parties, and, primarily, the Annual Lincoln Dinner-Dance have been extremely successful, and it is to them and the compliments that we have received thereon to which we point with extreme pride. The sixteen new men that we pledged last fall have been willing, loyal and submissive (an excellent neophytic trait), and give every indication of exemplifying the standard and aim of Phi Phi Alpha, which is: the promotion of the highest moral, intellectual, and social character.



Philomathean

- | | | |
|--------------------|-------------------|--------------------|
| Beuthin, Irene | Lau, Flora | Prouty, Dorothea |
| Burt, Mary | Layman, Leah | Roberts, Margaret |
| Childs, Marguerite | Layman, Louise | Scott, Ila |
| Collier, Ora | Leyrer, Lillian | Smith, Marion |
| Dakin, Charlotte | Martin, Elizabeth | Spencer, Ida |
| Dakin, Maurine | Martin, Gertrude | Timmerbacka, Helen |
| Eaton, Grace | Mason, Mary | White, Charlotte |
| Garvey, Mafalda | Platt, Jessie | White, Vera |
| Grierson, Lois | | |

PHILO opened the 1928 school year with the usual Japanese Fete and open meeting for the new girls. Pledge morning found thirteen girls wearing the black and gold. After initiation was over, the girls settled down to study foreign lands—their customs and costumes. Later in the fall, the patronesses and new members were delightfully entertained at an informal afternoon tea. Just before Christmas vacation was the annual Fair where everyone danced, ate goodies, and bought their holiday gifts. Philo had three representatives in the Oratorical Contest, one of them being a Freshman. This year's spring formal took the form of a dinner-dance held at St. Louis. After a most hilarious (what slumber party isn't?) slumber party, the girls are now looking forward to the Sunrise Breakfast which is held at the Wright House every year on Commencement morning.



Beta Tau Epsilon

- | | | | |
|-----------------|-------------------|-------------------|-------------------|
| Anderson, Frank | Heberlein, Paul | McLellan, Douglas | Rowland, Leslie |
| Eates, Charles | Hicks, Arvid | Merry, William | Scheib, Gilbert |
| Braddock, Louis | Hileman, Roscoe | Neff, Clayton | Scheifly, Wilfred |
| Custer, Richard | Jackson, Thomas | Oldt, Elliot | Thomas, Winston |
| Decourcy, John | Kretschmer, Elmer | Parker, Ralph | Tromater, Clinton |
| Delevan, John | Long, George | Place, George | Wheaton, Harry |
| Harris, Philip | Lyman, Earl | Rick, Herman | Wood, Louvan |

EVERY Beta Tau Epsilon man reviews with pride the events of the year just past—a truly successful year. The efficiently and smoothly run fraternity house alone gives evidence of co-operation and loyalty in the highest degree of all the members. Bearing this out are the lingering pleasant memories of a never-to-be-forgotten Annual Spring Party at St. Louis; the side-splitting, stomach-filling Stag Banquet; the interesting weekly meetings, followed usually by janitors' (unfortunate persons) treats; joy was unconfined, sleep never thought of, on the overnight up-river party; a friendly fracas now and then was relished by the fellows up on "third", also many others; but, remember that day of days when ten of the best men in the Freshman class chose Beta Tau. Ah, wonderful day!

Keeping always before it the thought: "Thinkers and Doers," Beta Tau Epsilon made that its motto in fact as well as name, in once more serving Alma College superbly. Excelling in scholarship, taking part in all campus activities, furthering fraternity friendships, and furnishing the Varsity with some good material, as well as supporting inter-fraternity activities, all this on one page of Beta Tau Epsilon's history gives to every member no little pride as the year comes to a close.



Kappa Iota

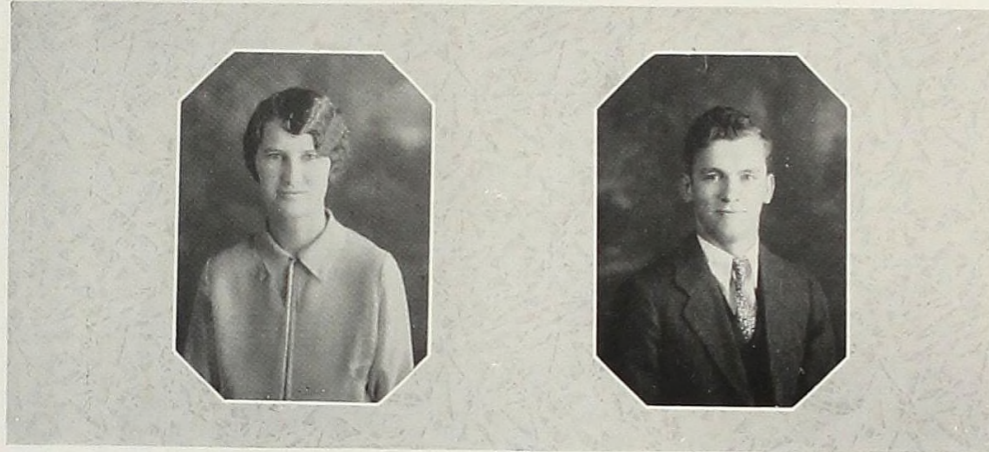
- | | | | |
|------------|---------------|--------------|--------------|
| M. Angell | B. Edgerly | M. Holmes | H. F. Miller |
| V. Burton | R. Faude | K. Lehner | J. Owen |
| F. Cameron | M. E. Forshar | M. McMillan | J. Peterson |
| I. Carbis | E. Gilbert | M. Mackenzie | E. Sprague |
| M. Crippen | L. Hall | A. Mileski | F. Widger |

THE KAPPA IOTA Literary Society, the youngest of the literary societies on the campus, approaches the end of a most successful year. This success is, perhaps, largely due to the fine group of new girls we have this year and the splendid co-operation they have shown. Drama has been the subject of study, and many interesting and beneficial programs have been enjoyed at the weekly meetings.

Social events started with the annual Pirate Party, followed by an enjoyable steak-roast (even if the weather did force us to the grill-room at Wright Hall), a delightful luncheon at Gratiot Inn given by our patronesses, a more than successful all-college informal Valentine Party held at Wright Hall, and the formal party at the Park Hotel, St. Louis. All of these hold pleasant memories, as do many informal gatherings of members in intimate companionship. With a house-party and the annual Commencement Luncheon, our major activities of late spring, the curtain will fall on another successful year, and the fact that we are young will permit us to grow and improve a great deal, so we are looking forward to a still more happy and ideal year for '29-'30.



Activities

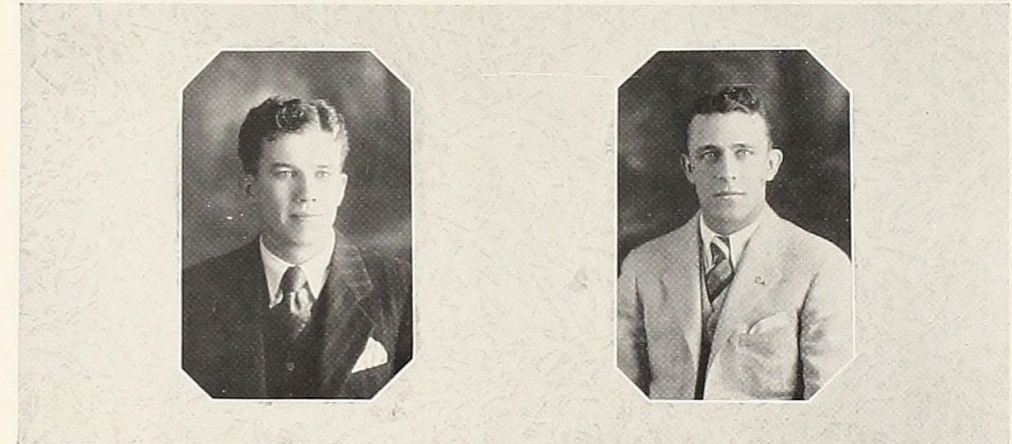


The Maroon and Cream

STAFF

Irene Beuthin	- - - -	Editor-in-Chief
Harold Logan	- - - -	Business Manager
Leland Pomeroy	- - - -	Circulation Manager
Frances Colwell	- - - -	Associate Editor
Helen Frances Miller	- - - -	Associate Editor
John Mitchell	- - - -	Associate Editor
Horace Burton	- - - -	Art
Elizabeth Martin	- - - -	Snaps
Winston Thomas	- - - -	Snaps
Mary Kay Burt	- - - -	Calendar
Frank Angell	- - - -	Athletics
David Golden	- - - -	Humor
Edgar Karpp	- - - -	Advertising
Francis Wood	- - - -	Advertising

It is impossible for one or two people to edit the annual—it must be the product of the co-operative effort of a group, and this book is. Not only have the members of the staff worked willingly and well, but a great many other people in the college, especially in the Junior class, have been called upon and have responded. Our aim has been a bigger and better Maroon and Cream. Our reward, we hope, will be constructive criticism and appreciation from the student body.



The Almanian

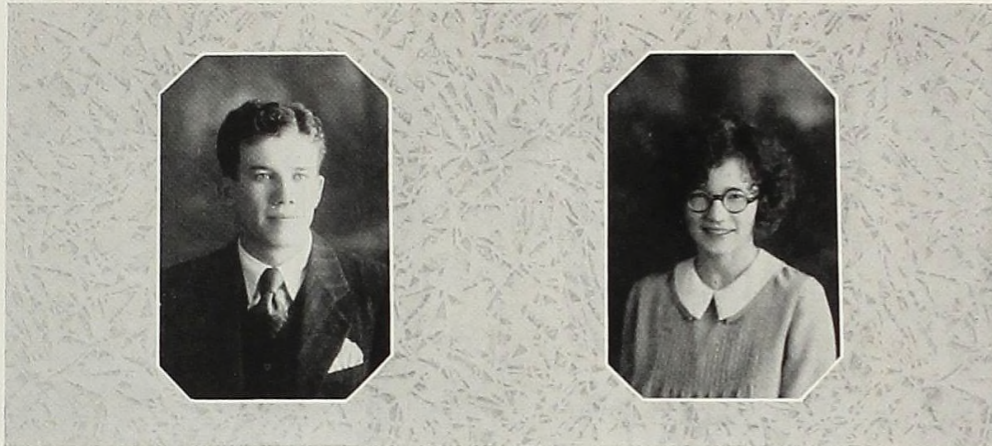
STAFF

Homer Barlow	- - - -	Editor
Charles Mann	- - - -	Business Manager
Francis Angell	- - - -	Associate Editor
Harold Logan	- - - -	Associate Editor
Lewis Salmon	- - - -	Wright Hall Editor
Dorothy Carter	- - - -	Circulation Manager

THE editor of The Almanian this year needs no introduction for Homer Barlow is "the man on the campus." His ability in the journalistic field is unquestioned and his excellent editorials are testimony of a keen mind as well as a superior literary style. He has endeavored, at all times, to make the Almanian a truly student paper, and, as such, it has been very popular.

The financial affairs of the paper have been most competently managed by Charles Mann. "Charlie's" winning personality has stood him in good stead in his business contacts and he rates as a first class business manager.

In no small way have the other members of the staff helped to make this year's Almanian a good one.



Oratory

FOR the first time in many years Alma had the honor of housing the State Oratorical champion in the person of Homer M. Barlow. Winning the local contest from a field of nine contestants, Mr. Barlow continued his winning ways and won over Albion's orator, Harold Spiegel, to give Alma added honors in the forensic field for 1929. At the intersectional contest held at Tiffin, Ohio, April 5th, Barlow won third place, scoring only one point below second position winner.

As has been the custom in the past, a college contest picked the man and woman who were to represent the school at the annual state contest. From a field of six contestants, Mary Kay Burt won first place, with Lewis Salmon second, and Gertrude Martin, third. In the men's contest, Mr. Barlow, with his oration entitled "Paradoxes," won first; Mr. Clifford Erickson, second, and Mr. Merriel Hendershot, third. In the women's state contest, Miss Burt, with her oration, "The Dream of the Ages," was rated seventh by the judges. From the debate fund, prizes of \$25.00, \$15.00, and \$10.00 were awarded the first three contestants in both contests.

The state contest is held in each of the contesting schools from year to year. This season it fell to Alma to entertain the visiting contestants and coaches. On March 1st the college was host to the state representatives. Under the direction of Professor Roy W. Hamilton, head of the Public Speaking Department and Oratory coach, and Debate and Oratory Manager H. Francis Angell, entertainment was provided for all the guests.

The winners of the first three places in the State Oratorical League's contest were as follows: Women's contest—First, "You're a Member," Miss Margaret Sleight of Albion; second, "This Jargoning World," Miss Ann Ess Dunning of Kalamazoo College; third, "Solitude," Miss Barbara Wilson of Olivet. Men's contest—First, "Paradoxes," Mr. Homer Barlow of Alma; second, "Chain-Store Minds," Mr. Harold Spiegel of Albion; third, "The Challenge of Sixty Years," Mr. David Cannon of Hillsdale.



Debate

UNDER the coaching of Professor Herman C. Spencer, Alma's debate squad had one of the most successful seasons in years. At this writing the Varsity trio has won three out of four debates with more to be debated. In an early season debate, a team composed of only one experienced debater lost a decision to Central State Normal by a close margin. The loss during the regular season was suffered at the hands of a smooth talking team from Albion who won by the vote of one judge.

Debating the State Debating League question: "Resolved: That trial by jury should be abolished," Alma debaters began work early in the season. From a large squad, a group of six men was picked by the try-outs system. Two of the experienced debaters took both sides of the question as occasion demanded. Homer McKown Barlow, who completed his fourth season of Varsity debate work and H. Francis Angell, debating his third season, were the two who met all teams scheduled. The remaining place on the team was taken by Amos Ruddock who debated last year, Ralph Harwood, a freshman of quality, and Robert Buchanon, a Sophomore, debating on a college platform for the first time.

H. Francis Angell, debate manager, scheduled teams outside the regular debates listed by the league at its annual meeting. As the Maroon and Cream goes to press, the season has not yet been completed, for return engagements with Olivet, Mt. Pleasant, and an initial appearance with Ypsilanti have been negotiated for. Should any or all of these "talk fests" be won by the local trio, added laurels to the already successful season will go down on record for the college.

At the annual debate chapel service Varsity debate letters were awarded to Homer M. Barlow, H. Francis Angell, Amos Ruddock, Robert Buchanon, and Ralph Harwood. Pearl A's, signifying the winning of the first debate letter, were given to Buchanon and Harwood.



The Girls' Glee Club

First Sopranos—

- M. K. Burt
- D. Carter
- K. Lehner
- N. McQuaid
- D. Prouty
- M. Roberts
- E. Sprague

Second Sopranos—

- M. Elden
- A. Mileski
- J. Peterson
- L. Salmon
- E. Skimin
- G. Williams

Altos—

- K. Boyd
- M. E. Forshar
- H. Long
- M. McMillan
- H. Temple
- B. Witkop

Accompanists—E. Zinn, H. F. Miller

THE GIRLS' GLEE CLUB in the year '27-'28 completed one of its most successful years under the guidance of Alice Olson, president, and Gertrude Williams, business manager. A tour was made of the southern part of the state and concerts were given in Detroit, Farmington, Battle Creek, Flint, Saginaw, and several other cities. The costume act for that year, "Mother Goose Fantasies," created much interest and was well received everywhere.

This year which has just been completed, the year '28-'29, witnessed a change in the usual plans of the club. It was decided by the club not to take a trip this year but to give the home concert as usual. The feature act, "Let's Pretend," was more elaborate than those of previous years, written by Mary Kay Burt; the dances were directed by Lewise Salmon.

The sextette, composed of the Misses Margaret Roberts, Mary Kay Burt, Lewise Salmon, Katherine Lehner, Margaret McMillan, and Kathryn Boyd, has fulfilled several engagements apart from the Club, in one or two cases giving a complete concert.

The officers of the Club are: Professor J. W. Ewer, director; Lewise Salmon, president; Katherine Lehner, manager; Margaret Roberts, secretary.



The Men's Glee Club

OFFICERS

Homer Barlow	- - - - -	President
Edgar Karpp	- - - - -	Manager
Paul Heberlein	- - - - -	Secretary
Director	- - - - -	J. W. Ewer
Pianist	- - - - -	Gerald Phillips

PERSONNEL

First Tenors—	Second Tenors—	Baritones—	Basses—
E. Horn	A. Dean	D. Horton	H. Barlow
E. Karpp	E. Oldt	G. Lamb	D. Adams
P. Heberlein	C. Mann	E. Frost	H. Boutin
A. Royer	H. Wherly	H. Boutin	C. Erickson
H. Holland	M. Hendershot	W. Pezet	H. Fales
E. Lyman			P. Gray
			E. Tarrant

WITH a wealth of new material to draw upon, the best of last year's to rely upon, Professor Ewer, with his usual unflinching ability, has created for 1929 a singing club that has been surpassed by few of its predecessors. The fine balance maintained throughout the singing sections must win approval from the best authorities of music. The repertoire this year has been exceptional, containing, as it does, a well varied selection of classical and popular numbers, some of which contain those difficult scores which bring bursts of applause from the audiences when well rendered, and others containing those simple melodies which are so well liked and acceptable whenever they are sung.

Certainly every member of the club is to be congratulated for the fine spirit with which they have carried the burdens of the rehearsals and the season's appearances, and for the way they have co-operated in the truly fraternal spirit which is needed to make a harmonious singing organization.



The Alma College Band

PERSONNEL

Prof. J. W. Ewer	- - - - -	Conductor
Dan L. Adams	- - - - -	President
Joseph Taylor	- - - - -	Treasurer
Frank A. Anderson	- - - - -	{ Student Conductor Business Manager

Dan Adams, solo cornet; Frank Anderson, Oboe and Drum Major; Frederick Biddlecombe, first cornet; Horace Boutin, solo clarinet; Norman Bradley, Eb alto; Walter Elder, trombone; Hollis Fales, trombone; Kermit Fischer, snare drum; Douglas Hansen, alto sax.; John Hause, second clarinet; Earl Lyman, bass drum; William MacCurdy, first cornet; John MacFarland, second cornet; Howard Potter, tuba; Stanley Shaffer, trombone; Joseph Taylor, second cornet; Winston Thomas, baritone; Harry Wehrly, solo cornet; Carl Wise, tuba; Ernest Wise, flute and piccolo; Prof. George C. Wise, Eb clarinet.

IN 1922 the College witnessed the beginnings of its now well-known Band. It started under the inspiration of Kenneth Wolf, a former student, with about a dozen members. They appeared at a few games with a repertoire of but two marches which became exceedingly well known to the student body. Realizing the hopelessness of the task without professional aid, they prevailed upon Prof. Ewer to lead them in the conquest of new worlds. From that time on, the Band has steadily grown and improved, which fact is shown in that it became known as the best band in the M. I. A. A. It is further proved in that last year it went on tour for the first time and has repeated the same thing again this year. The Band tour promises well to become an annual event and is looked forward to by members of the organization.

Women's Debating

THE women of Alma College organized a debating group affiliated with the Michigan Women's Debating League. Two teams were formed under the direction of Professor Spencer. The question was, "Resolved: That installment buying should be drastically curtailed."

After some study of the question two teams were selected. The Affirmative consisted of Helen Logan, Louise Waider and Mary Elizabeth Forshar. The Negative was composed of Lena Hall, Frances Cameron, and Marjorie Gesner. The team was managed under the careful direction of Miss Frances Cameron.

The first debate was scheduled for March 15. The Affirmative team was to have met Calvin's Negative at Alma. The Negative team was sent to Kalamazoo to meet Kalamazoo's Affirmative. Due to lack of interest, Calvin was forced to cancel their debate. Debates were scheduled with Mount Pleasant and Ypsilanti, also.

Since this is the first year that the women have had an opportunity to debate, it was a little difficult to arouse much interest in the work. It is hoped that, with all the members of this year's team back again, the next season will be a very successful one.



Inter-Fraternities Council

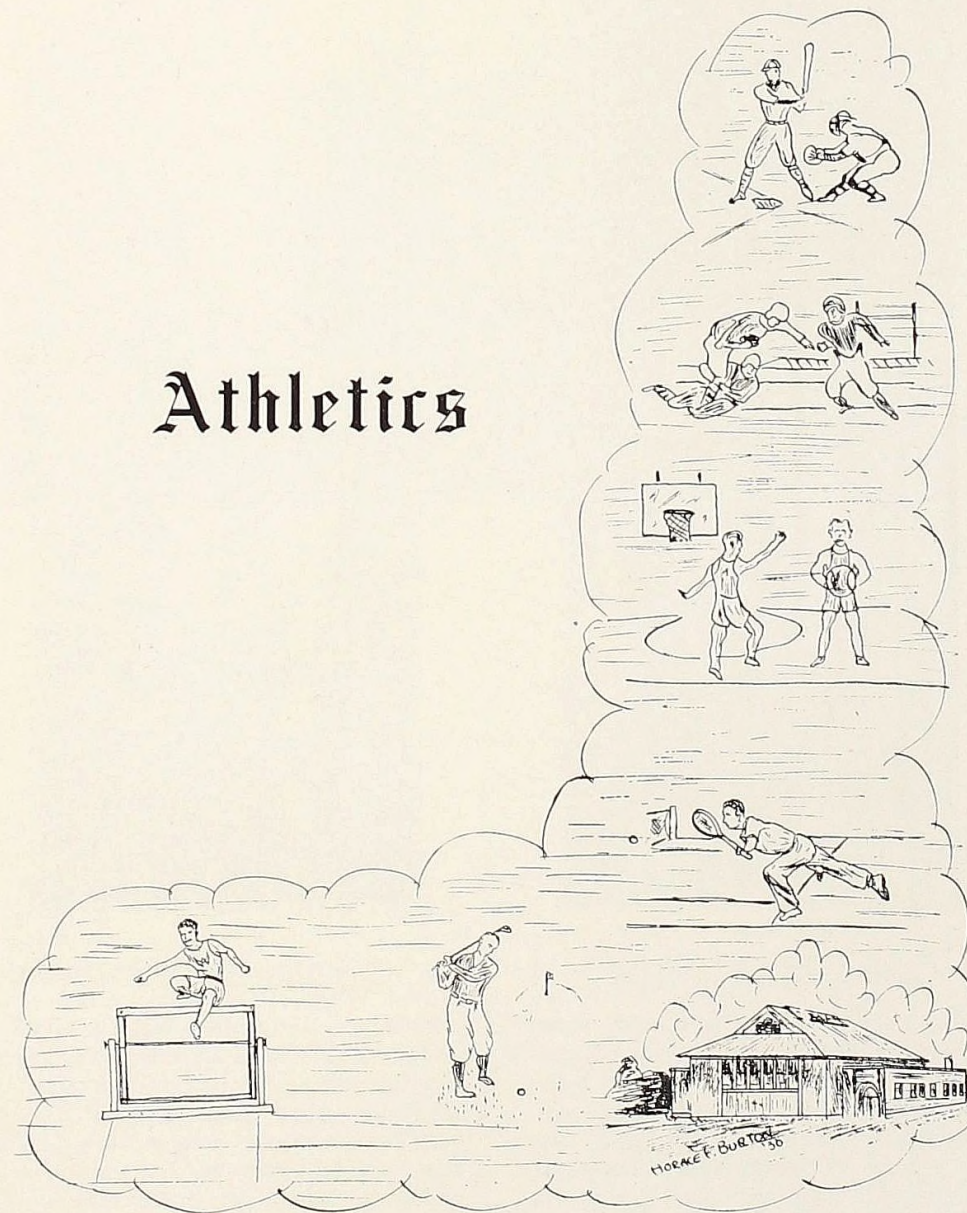
THE inter-fraternities council is an organization founded for the purpose of caring for problems of general concern to all the fraternities on the campus. It accomplished this by the regulation of rushing and pledging, and the promotion of better fraternal relationships.

Members to the council are chosen from the various societies and hold their positions for the entire year. The officers of the group are chosen by the members of the council. This year's Chairman was Charles Goodenow, and the Secretary, Winston Thomas. Members of the organization were Leslie Harris, Merriel Hendershot, Charles Miller, Leland Pomeroy, Gilbert Shieb, and Louvan Wood.

This year the council has carried out its duties to a high degree of success and has proved that the founding of the organization was a very forward step in the solution of fraternity problems. It is the only sure way that good inter-fraternity feeling can be assured and the one that is most likely to continue solving the trials and tribulations of Alma's organizations.



Athletics

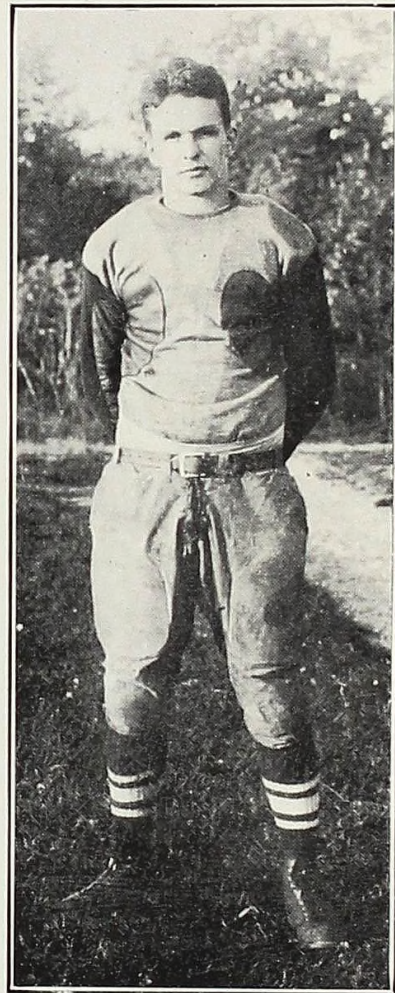


HORACE F. BURTON '30



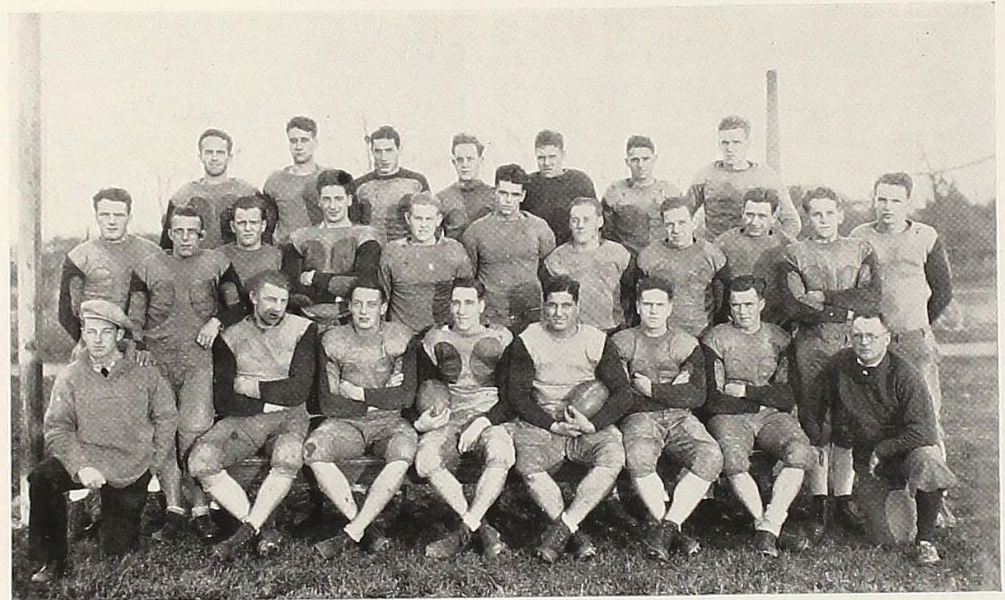
Coach Roy Campbell

Eight championships in the last seven years is the record of our esteemed mentor; the reason for Alma teams being feared throughout the state. Coach's ability to put the "Old Alma Fight" into every man he sends into the game, coupled with his ever present Scotch wit, makes him a man loved by the athletes and all those who come in contact with him.



Captain-Elect Pezet

"Wally" justly deserved the honor which was bestowed on him at the football banquet by his mates, that of leading this fall's Alma College eleven. Three years of All-Association mention, the last two on the first team, are enough to justify any man's being elected captain. But what's more, he is a fellow who commands the respect of his men and will be a capable leader.



FOOTBALL REVIEW



WINNING three and losing four games on the season's schedule is Alma's Varsity football record for the 1928 season. Coached by Royal R. Campbell, "Dean of M. I. A. A. coaches," captained by Edgar Karpp and Hurant Arozian, the Maroon and Cream eleven finished in third place when the curtain was dropped and the association's standings tabulated.

Despite the fact that there were only seven regulars back from the championship eleven of 1927, namely, Captains Karpp and Arozian, Erickson, Pezet, Angell, Lamb, and VanDeventer, the coach and squad started out with the 1928 M. I. A. A. pennant in sight. An all-time association record would have been hung up had the Presbyterians come through this year, but fate intervened.

The personnel of the squad through the year was as follows:

Halfbacks—Lamb, Gussin, Golden, Thompson, Mann, Place.

Fullbacks—Erickson, VanDeventer, Wheaton.

Quarterbacks—Karpp, Wagner.

Ends—Pezet, Mann, Heartt, Albaugh.

Tackles—Arozian, Angell, Burton.

Guards—MacGregor, Hobart, Horn, Forbes, Yagerman.

Centers—Kittendorf, VanDeventer.

Of this group, Golden, Mann, Burton, Albaugh, MacGregor, Hobart, and Kittendorf were reserves who saw considerable work on the varsity last year. With the seven regulars and these reserves, Coach Campbell was faced with the stupendous task of moulding a championship-aspiring team which could cope with Albion and Hillsdale who were conceded by all critics to finish at the top.

FOOTBALL REVIEW—[Cont'd]

Slow in getting started, Alma lost to a fast and clever Ferris Institute team by a 13-7 score. After two weeks' practice and finishing, the Almates took Olivet into camp, 19-2, after which they soundly trounced Hillsdale, 18-0, and closed their winning streak by defeating Hope, 12-0. Then came the turning point of the season. With the dope against them, playing a team which had defeated Michigan State, 2-0, a few weeks before, Alma met Albion on the local gridiron. An association record, a third successive championship, and a chance to make a name for their coach and school were in sight. On a muddy field, with every break against them, the local eleven was forced to take the small end of a 9-6 score after outplaying Albion most of the game, scoring twelve first downs to their three. After this game, all the pep seemed to have ebbed from the Presbyterians. At Ann Arbor they took on the University's "B" team, outplayed them in the first half, and literally took the Varsity reserves off their feet. Alma even was on Michigan's goal line and played all the time in their territory. In the second half, the story was different. Thirty-three scores were run up against the Presbyterians despite their "never say die" and "fight to the last" spirit which prevailed till the final whistle blew. In the season curtain-dropper, Kazoo downed Alma, 12-0, on a field which was a sea of mud.

Taken all in all, the 1928 season was successful. Considered definitely out of the race, the Maroon and Cream gridders put up a game fight for the championship rag. Injuries several times made it impossible to put the best team on the field. As typified by the words of Coach Campbell at the football banquet when he said that he "was prouder of them than of the champions of last year," Alma is proud of her gridders and the clean football they played, their co-operation on the field, and their fighting spirit.

George Kaiser, manager of the Athletic Board of Control and the teams, announced the following men as Varsity "A" winners: Pezet, Arozian, Angell, Kittendorf, Van-Deventer, MacGregor, Albaugh, Karpp, Lamb, Gussin, Mann, Hobart, and Wagner. Triple "A's" were awarded to Yagerman and Heartt. Triple "A" sweaters were given to the Seniors, Horn and Thompson.

"Wally" Pezet was named captain for the 1929 season by his mates, at the annual football banquet.

Prospects for next year are exceptionally bright. Of the Varsity letter winners, Arozian, Hobart, and Mann, are the only ones lost by graduation. Simmons, all-association man for two years, is expected to be back, as his ineligibility standings will have been worked off by that time. The Freshman squad was exceedingly strong this year and several men from that aggregation will prove invaluable in the fight for a championship in 1929, the third in a period of four years.

Alma placed six men on the all-M. I. A. A. teams picked by the coaches at the end of the season. Karpp, Erickson and Pezet were named on the first team, while Arozian, Angell, and Gussin were picked at their respective positions on the second team.

62

The Season of 1928

FERRIS—13

Ferris came down from the north, minus the snow and ice, but plus a heavy and smart eleven. Determined to give that school some publicity, she has gone out after players in the state as well as hiring several coaches. As a result, Alma was forced

ALMA—7

THE SEASON OF 1928—[Cont'd]

to bow to them on an afternoon unique in that it was the only game played in the sun and on a dry field during the season.

Alma scored in the first quarter after a few minutes of preliminary feeling out. Line plunging of Erickson carried the ball down to the goal line where a lateral pass by Karpp to Gussin counted. Throughout the rest of this quarter and the next, both teams battled in the center of the field. Bosma's seventy-yard run for a touch-down early in the third period started things for Ferris. Wagner's fumbling gave Ferris the ball after the kick-off and within three minutes two touchdowns were scored, the last, by a pass from Poff to Tonkin. Consistent drives by Alma's men carried the ball twice to within five yards of the Ferris goal line, but here they held.

Substitutions were frequent in this game. It was scheduled for a practice fray, and a defeat did not keep it from being just that.

ALMA—19

After two weeks of practice and without a game to intervene, the Campbellites soundly trounced a strong Olivet aggregation in their camp 19-2. A muddy field no doubt kept the score down considerably.

Scoring nineteen first downs to their opponents seven, the Almatians slipped and slid in a game which was featured by "Red" Erickson's line smashing and a fifty-nine yard run for a touchdown by Gussin. Olivet's two points were scored in the first period after the Almates had countered, soon after the game got under way. A penalty for clipping on a punt put the ball on the two-yard line. A bad pass from center over the end zone gave them their sole counter.

The punting of Karpp was another feature of the game. With a wet and heavy ball he consistently got off long kicks, far excelling the Olivetian's punter. Hawley, Olivet's quarter, played a heady game for the losers.

Substitutions again were frequent, practically the whole squad seeing action. A shifting of men at guard to find a suitable man seemed to be the one worry of the coach on the line.

ALMA—12

Making it two association victories in a row, the Maroon and Cream gridders assumed the lead in the title race by defeating a fighting Hope College team 12-0. Without the aid of Karpp, whose sight was seriously impaired by a bump in the Ferris game, the locals smashed their way to victory.

Alma made eighteen first downs to Hope's three and not once did the Hollanders threaten Alma's goal. The game was marked by clean playing on both sides, no penalties being given except for offsides.

Following a series of smashes and runs by Erickson, Gussin, and Lamb, the latter counted soon after the game started. Then late in the third quarter, carrying the ball on straight downs, the Almates again scored by means of a thirty-yard pass from Wagner to Lamb.

The work of Wagner in running the team, in Karpp's absence, was especially commendable in this game. Gussin exhibited some good open field running until slightly injured; this was probably his best game of the season. Alma's left side of the line took a heavy workout in this game. Forty-two off-tackle plays and line smashes were directed there, while only two went to the other. For Arozian and Mann this game was a holiday, for Angell and Pezet, a hard workout.

ALMA—18

With a crippled squad, a fighting Alma team stopped Hood and annexed its third straight victory by winning over Hillsdale to the tune of 18-0. Before a Parents' Day crowd, the local warriors beat off a first quarter reverse and thereafter played in the Blue and White territory.

A seventeen-yard pass to Karpp, who was put in the fray out of necessity and who was playing handicapped by the loss of sight in one eye, followed by a thirty-yard run, gave Alma her first score. Erickson smashed his way for the second touch-down, and Albaugh made a final score after a seventeen-yard pass from Karpp to Angell had carried the ball to the three-yard line.

HILLSDALE—0

THE SEASON OF 1928—[Cont'd]

Injuries kept Lamb and Gussin out of this game and seriously handicapped Alma's offense. Mann was shifted from right end to the halfback and Wagner inserted at the other. Albaugh was brought up from the reserves to fill Mann's place at end.

Hood, Hillsdale's colored flash, proved the only offensive man they had who could gain at all.

ALBION—9

Probably one of the best games ever seen on the local field was the titular battle with Albion, our ancient rival. Almites will always say that the 9-6 score against their team is a strong argument for "Pop" Warner's idea of awarding points for first downs.

Scoring ten first downs to Albion's four and outpassing them, Alma lost the game because of bad breaks. Playing a defensive game, the Methodists got every break the game offered and, as a result, won the championship. Gussin's misjudgment of a rolling punted ball on our twelve yard line, which was recovered by Good of Albion, was the turning point which took a third successive M. I. A. A. championship banner away from the walls of Memorial Gymnasium.

Alma scored in the first period after a series of passes, which, mixed with straight football, carried the ball to the one-yard line. A pass, Karpp to Albaugh, registered Alma's only counter in the game. A lateral pass to Sleight, and Flemming's blocking of Karpp's kick, gave the Albion eight points which, with Lightbody's kick after the touchdown, gave them their 9-6 margin.

This was Alma's first M. I. A. A. loss in three years, finishing a winning streak of thirteen games. It was no disgrace to lose to Albion's clean-playing, hard-fighting, lucky crew.

MICHIGAN "B"—33

Following the loss to Albion, Alma started out to counterbalance her three straight wins with as many defeats. After playing the University of Michigan Varsity Reserves off their feet in the first half, the Almanians were completely taken off the ground by a smart attack that netted thirty-three points before the final whistle blew.

So well did Alma play the first half that all the fighting was done in the Maize and Blue territory. Once, the ball was on their one-yard line with a like number of downs to take it over, but a wide pass to Pezet shattered all hopes of scoring which may have been entertained by the Maroon and Cream supporters.

A sixty-five yard march by the Michigan Cubs in the second half started the avalanche. Fighting to the last, Alma's gridders could not seem to stop their merciless attack. Geistert can thank Alma for his chance in the final Varsity games for the University of Michigan. His showing in our game was "Egregius" and as a result he was promoted along with Carter to the first squad. Bauer, former Alma guard on the championship team of 1926, played the same position on their team. His educated toe was functioning in this game when he kicked three goals after touchdowns. Erickson was the only Alma man who could gain through the line of the Wolverine juniors.

KALAMAZOO—12

On a veritable sea of mud, with a second or third place to gain, Alma fell into the latter after a nightmare of slipping, sliding, and fumbling. Instead of Hornets, Kazoos should have been termed Mud-hens. They got the ball and held on to it—we couldn't.

Handicapped by the loss of Kittendorf at center, who was injured in the Michigan "B" game, things went badly from the start. Bad passes from center and fumbles gave Kazoo the ball when an Alma touchdown was in the offing. Captain Davis scored the first Orange and Black counter in the opening quarter after they had recovered a fumble on our fifteen-yard line. The second one was by Wicks, who took the ball out of Gussin's hand as he was trying to pass it.

Lamb put us in position to score at the opening of the second half with a spectacular return of the kick-off—only to have the advantage lost by fumbling.

Gussin did some good running which partly redeemed the backfield's fumbling. Johnson was particularly effective for the winners.

ALMA—6

ALMA—0

ALMA—0

1928 FOOTBALL

UNDER the direct tutelage of Professor Jesse Ewer, ably assisted by Ellsworth Simmons and Edgar Karpp, a Freshman football team was developed at Alma this year which was worthy of its name. Scoring 38 points to their opponents' 19, they won two, tied one, and lost one game for the season's record.

Coach Campbell characterized this aggregation as "the finest Freshman football material that ever entered Alma College." Only one team was able to cross their goal line, that one being Western State Frosh, which had a squad of some fifty players who were all used in the game.

Hope was defeated in the season's opener, 25-0. Brown featured in this game with a 75-yard run for a touchdown on the kick-off. "Scotty" MacDonald's Traverse City team held the green clads to a 0-0 tie. It seems the local Traverse City boys couldn't get going and their failure to do so affected the rest of the team. Mt. Pleasant Normal's Frosh were taken into camp by a 13-0 counter in the next game. In the final tussle, the Alma Frosh lost to Western State's team, 19-0, in a game in which they fought hard but were unable to cope with the fresh men which Coach Hill kept sending in.

Captain Brown, Potter, Gray, Byron, Sharpe, and Koechlein featured in the season's work. Frosh opposition was invaluable in getting the Varsity in shape for its games. Sweaters and numerals were awarded to the following: Captain Brown, Potter, Gray, Novak, Byron, Schimmers, McCuaig, Sharpe, Crawford, Long, Oldt, Koechlein, Merry, and Graham. The following men made up the squad:

Centers—Schimmers, Williams, Byron.

Guards—McLellan, Koechlein, Byron, Chamberlain, Barstow.

Tackles—Potter, Gray.

Ends—Graham, McCuaig, Looker, Fischer.

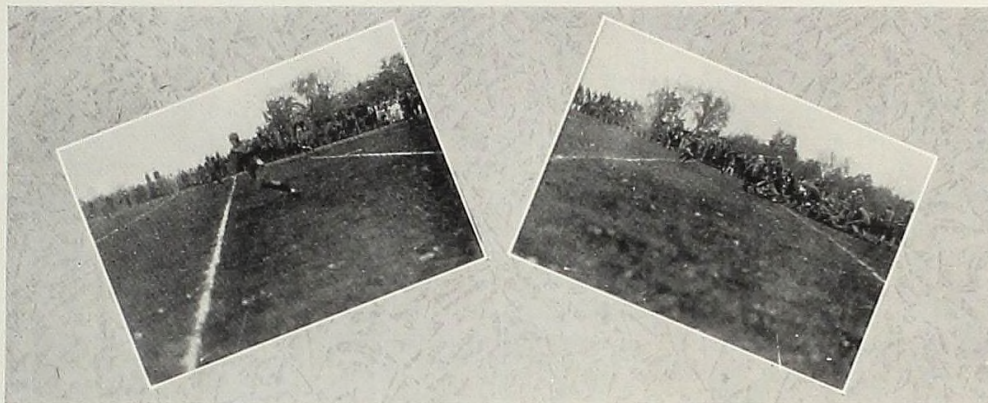
Backs—Brown, Sharpe, Novak, Kucera, Merry, Oldt.

VARSITY RECORD		M. I. A. A. FINAL STANDINGS				
Alma 7.....	Ferris 13	Team	Won	Lost	Tied	Pct.
Alma 19.....	Olivet 2	Albion	5	0	0	1.000
Alma 18.....	Hillsdale 0	Kazoo	3	1	1	.750
Alma 12.....	Hope 0	Alma	3	2	0	.600
Alma 6.....	Albion 9	Hillsdale	0	2	3	.000
Alma 0.....	Mich. 'B' 33	Hope	0	3	2	.000
Alma 0.....	Kazoo 12	Olivet	0	3	2	.000

FROSH RECORD

Frosh 25.....	Hope 0
Frosh 0.....	Traverse City 0
Frosh 13.....	C. S. T. C. 0
Frosh 0.....	W. S. T. C. 19

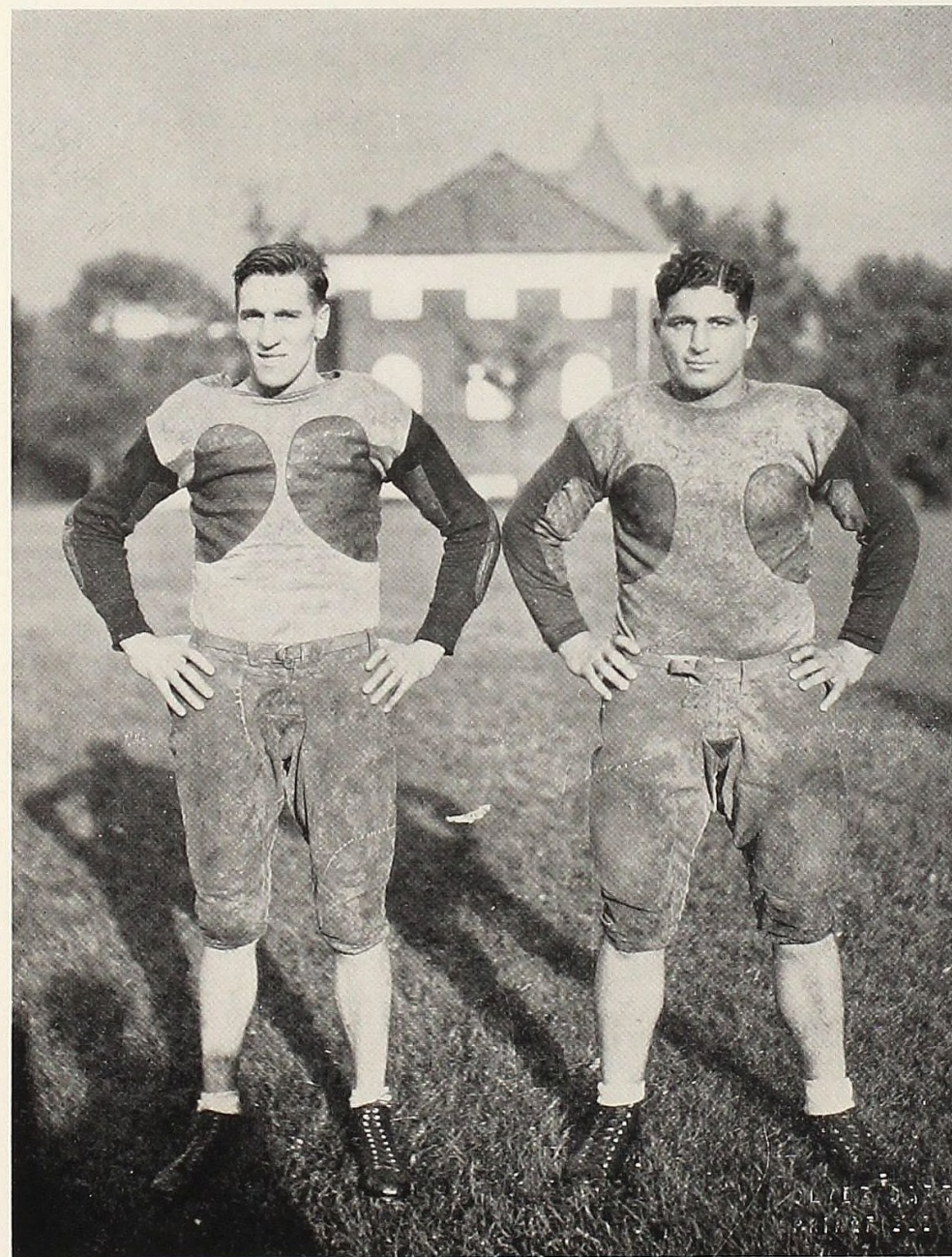
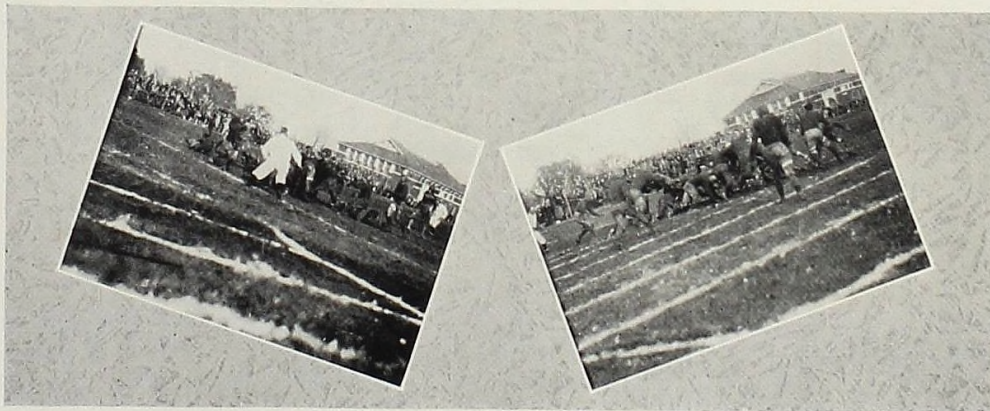
Next year will see Alma go into action against Michigan State. The Presbyterians will open the season for them September 28, at Lansing. It is understood that Albion will not play them again next year. Also Mt. Pleasant and Alma are once again to resume grid relationships.



Co-Captains Karpp and Arozian

Selected as All-M. I. A. A. quarterback for the third consecutive year is the record of Ed Karpp. Despite the loss of sight in one eye early in the season "Eddie" finished the year at the helm of his team and aided immeasurably in the attack. Risking a permanent injury for his school is a noble sacrifice.

"Chief" finished his last year of college football fighting hard for the Maroon and Cream. That a championship was not ours can not be attributed to any lack of fighting spirit on his part. The two captains worked in conjunction with each other harmoniously and kept their men on the go every minute.



CO-CAPTAINS KARPP AND AROZIAN



VARSITY BASKETBALL



WINNING eight of fourteen games on her schedule and six of ten in the M.I.A.A., Coach Campbell's collegians finished a more than mediocre season. Two of Alma's men were selected by conference coaches on the mythical association teams and the Varsity quintet finished the year runners-up to the champions from Albion.

Varsity awards were made to Captain Simmons, Karpp, Brown, Gussin, Pezet, Albaugh, and Heartt. All of these men are eligible for competition next year, so that prospects are bright for a championship aggregation in 1929-30.

THE SEASON GAME BY GAME

ALMA—13

Alma journeyed to Albion for the season's opener expecting defeat at the hands of the Methodists. Ineligibility robbed Campbell of some good men, and the final score of 33-13 was an index number of the two teams. Karpp playing the first few games of the season as captain was high point man for Alma with four counters. An eye injured in football necessitated his quitting the game when the second semester opened.

E. Gray showed the class of game he was to put up throughout the season by being high point man for the champs with fourteen points to his credit of which six were from fouls sunk in as many tries.

ALBION—33

VARSITY BASKETBALL—[Cont'd]

ALMA—25

The second game also resulted in a score on the wrong side of the ledger for the Presbyterians when the fighting Dutchmen came north and evened the season's athletic scores. Gussin led the local attack with thirteen points while Martin and DePree scored nine apiece. The game was fast and as the score indicates, interesting.

HOPE—30

ALMA—17

Pulling out of her losing lethargy, the local boys sprang a surprise by downing Coach Bomard's outfit in a fast game. Murdock and Burroughs for the visitors played well at the forwards while for Alma the entire team was putting up a good exhibition of basketball.

KAZOO—14

ALMA—37

During the latter part of Christmas vacation Coach took his rejuvenated team up to Traverse City and gave them a work-out against "Scotty" MacDonald's Independents. Simmons showed he had lost a little ability by a season's lay-off from athletics, and collected fifteen points. Brown, a Freshman star, eligible for the Varsity, showed up well.

TRAVERSE CITY—20

ALMA—24

To amend for two defeats the Presbyterians came back and downed the visiting Olivetians in the season's next fracas. The boys completely stopped the renowned church and led by Gussin annexed a game. Wagner, playing the first part of the season, showed up well.

OLIVET—16

ALMA—38

On our own floor the first of an Alma-Mt. Pleasant classic was clearly ours. The Teachers were outclassed completely from the beginning. Keller, with nine points, did best for them, while Simmons led his men with five buckets and two foul shots.

MT. PLEASANT—20

ALMA—51

The Almanians went on a scoring spree and continued their winning ways by overwhelming the 'Dales here at Alma. Despite the lop-sided score, the visitors presented a strong outfit, particularly in Restifo, their diminutive forward. Heartt played his best game of the year, and equalled Gussin's five baskets for the evening's work.

HILLSDALE—26

ALMA—21

Three games in one week seemed a little too much for the Almanites so their fracas with the "Y" team in Detroit was a listless affair. They stayed in the running for a half when the Detroiters led by only a two-point margin, 15-13. After that they were rushed off their feet. Heartt led the local scorers with ten points, while Al Seng, a former Alma star, featured with the winners scoring twelve points.

DETROIT "Y"—30

ALMA—28

Simmon's basket with a minute to play and his team behind 19-21 put the game into an over-time affair which turned the tables in favor of Alma. Olivet with a strong team was going "plenty hot" and the evening was nearly too close for the Almanites. Gussin and Brown headed the local attack with seven and four baskets respectively. Church with six baskets was the big man for Olivet while Fevie played a good defensive game.

OLIVET—26

ALMA—27

The Central State Teacher's College evened the count for the season when they took the local quintet into camp by a sizeable margin when we journeyed north to repay the visit. Despite a first half lead and a good front, "Dutch" Lodewyk's men were better on this evening.

MT. PLEASANT—40

VARSITY BASKETBALL—[Cont'd]

ALMA—26

The score 25 each, five seconds to play in the first overtime—what story-setting could be more interesting. To make it come out right Albaugh sank a gift shot to win the game for Alma. In the preliminary forty minutes, the lead see-sawed back and forth. Schrier and Hackney for the Hornets and Brown and Simmons for Alma led the attacks.



Ellsworth "Brute" Simmons

Handicapped by only one semester of playing, "Simmie" nevertheless led his teammates in a successful season. Had he been in the game both semesters, there is little doubt but what his second all-association rating would have been a first-team one, as was his lot in his first year of college competition. Simmons is a great basketball player and will be one of the main cogs in next year's pursuit for a championship.

KAZOO—25

ALMA—29

ALBION—35

Despite hopes of conquering the visiting Methodists, Daugherty's men were too good for the Maroon and Cream warriors. Gussin, handicapped with a knee injury, could not give his best, however, he scored 12 of his mates' 29 points. Alma led at the half-way point, 17-13.

ALMA—26

HILLSDALE—29

With Heartt and Gussin out of the game on account of injuries, Harwood's men gained a victory over Alma. Led by Restifo, the locals were completely outclassed in the first half, and a second half change for the better was not enough.

ALMA—37

HOPE—32

Though the season opened with a defeat, it ended with a noble victory. Playing the Dutchmen anywhere is a tough assignment and more so when it is on their own floor. This job the boys did in fine shape. Led by Gussin, with nineteen points to his credit, they made it two victories in three athletic contests with Hope this year. Kay, who garnered eleven points, was the "big noise" for the Dutchmen. The sportsmanship displayed by the Hope team and rooters was commendable and worthy of praise.



Carl "Mooy" Gussin

Alma's only claim to All-M. I. A. A. recognition on the court goes to our running guard. A Sophomore in the college, he is the junior member of the mythical honorary five. Gussin's claim to the first team position was uncontested, for his play in all the season's games was above average and, most of the time, spectacular. He has two more years in which to bring honors to his college and himself.

FRESHMAN BASKETBALL

Winning one and losing four is the game record for the Alma College Freshmen's basketball season. However, their 40-11 victory over Albion, in a measure, appeased them for the other games lost by close scores. A two-game schedule with the Mt. Pleasant Frosh went to the latter, the scores being 22-20 and 26-22. Saginaw "Y" and the Kazoo Frosh also succeeded in downing the local yearlings.

Despite this statistical showing, the work of the Frosh team and squad is to be commended. Handicapped by little time for practice, Coach Simmons turned out a worthy outfit which gave the Varsity plenty of worry in practice tilts. If all the boys come back next year, the Varsity squad will be strengthened immeasurably.

The men whose work was particularly commendable are: Williams, Wehrly, Byron, Crawford, and Sharpe. Orvis, Crowell, McLellan, Kessel, Royer, and Gray, also saw action on the team.

ALL-M. I. A. A.

Alma tied Albion, the pennant winners, in placing her men on the coaches' All-M. I. A. A. Gussin earned a first team position and Simmons a second team berth. Albion's two position winners were Carlson and E. Gray, both on the mentor's first five. Albaugh, because of his free throwing ability, received an honorable mention.

ALL-M. I. A. A. SELECTIONS

First Team	Second Team
Restifo—Hillsdale	R. F. Murdock—Kazoo
Carlson—Albion	L. F. Simmons—Alma
E. Gray—Albion	C. Martin—Hope
Gussin—Alma	R. G. Johnston—Olivet
Schrier—Kazoo	L. G. VanLente—Hope

FINAL M. I. A. A. STANDINGS

After a rather unsuccessful first semester, when they lost to Albion and Hope, Alma's basketekers came down to the finish and landed in second position when final ratings were made. The eligibility of Simmons and Brown aided materially in the offense that Coach Campbell put on the floor the second semester.

Albion's undisputed claim to the second M. I. A. A. title this year was well earned. Coach Daugherty had an aggregation which showed to an advantage in coaching and experience.

Team	Won	Lost	Pct.
Albion	9	0	1.000
Alma	6	4	.600
Hillsdale	6	4	.600
Hope	4	5	.444
Kalamazoo	3	7	.300
Olivet	1	9	.100

— OUR CHEER-LEADER —



Louie Zimmerman

A peppy little fellow, full of vim and vigor, always ready to awaken the spirit of the Alma students to back the team to the utmost—that's our cheer-leader. Louie is energetic, never tiring; and when he gives the signal for a cheer, the old field resounds with the ardent enthusiasm of those who are urging the team on to victory. He has led the Alma fans for three years and we regret to lose him as a graduate.

BASEBALL

AS the Maroon and Cream goes to press, baseball is just getting under way. Because of a lack of finances, Alma withdrew from M. I. A. A. baseball competition for this season and, probably, for good.

To supplant intercollegiate baseball, Coach Campbell has organized a city league which will be made up of six teams: two Varsity and a Freshman team from the college, and three nines from downtown. The College Supply store is to award gold baseballs to the members of the winning aggregation. Each team plays a game a week, beginning April 8th, until school closes in June.

29

TRACK

FOR financial reasons, intercollegiate track is being dropped this spring.

Meets with Mt. Pleasant may possibly be arranged and worthy men will be entered in the M. I. A. A. field meet at Albion. This completes the tentative track program as outlined for the season, with possibly an inter-class meet.

A cement tennis court is at present under construction which will give the racqueters reason to forget the usual weather worries. Whether or not a team will be entered in the meet at Albion in June is not known, but it will probably not be.

WOMEN'S ATHLETICS

1928-29

ATHLETICS, whether they be for men or for women, are included in a College curriculum because they develop a spirit of sportsmanship and sociability, and make for better health through organized exercise. As is stated in the catalogue of Alma College, "the ultimate aim is not the creation of a few stars, but the development of the individual to a greater physical efficiency." Although the program of Women's Athletics, this year, tries to fulfill these aims, it also tries to make gymnastic work more interesting to the girls, so that they do not feel as if a bitter medicine were being given to them three times a week.

The program of Women's Athletics is divided into four quarters, each quarter taking up a competitive sport as well as some phase of floorwork, so that a balanced as well as an interesting program may be achieved.

The beginning of the school year found the girls engaged in playing Field Hockey, and after several weeks of preliminary practice, regular games were played between the class teams. The enthusiasm and interest in the sport grew decidedly, so that, notwithstanding many bruises, it was with some disappointment that we came indoors when unfavorable weather conditions prevailed.

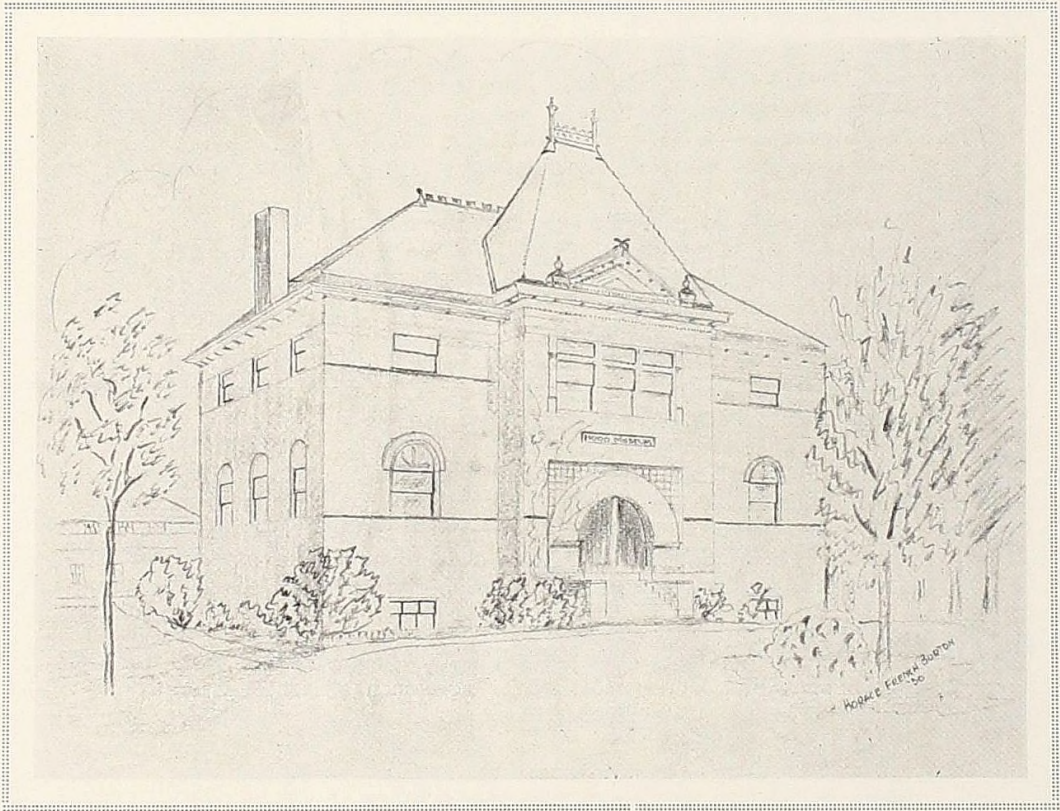
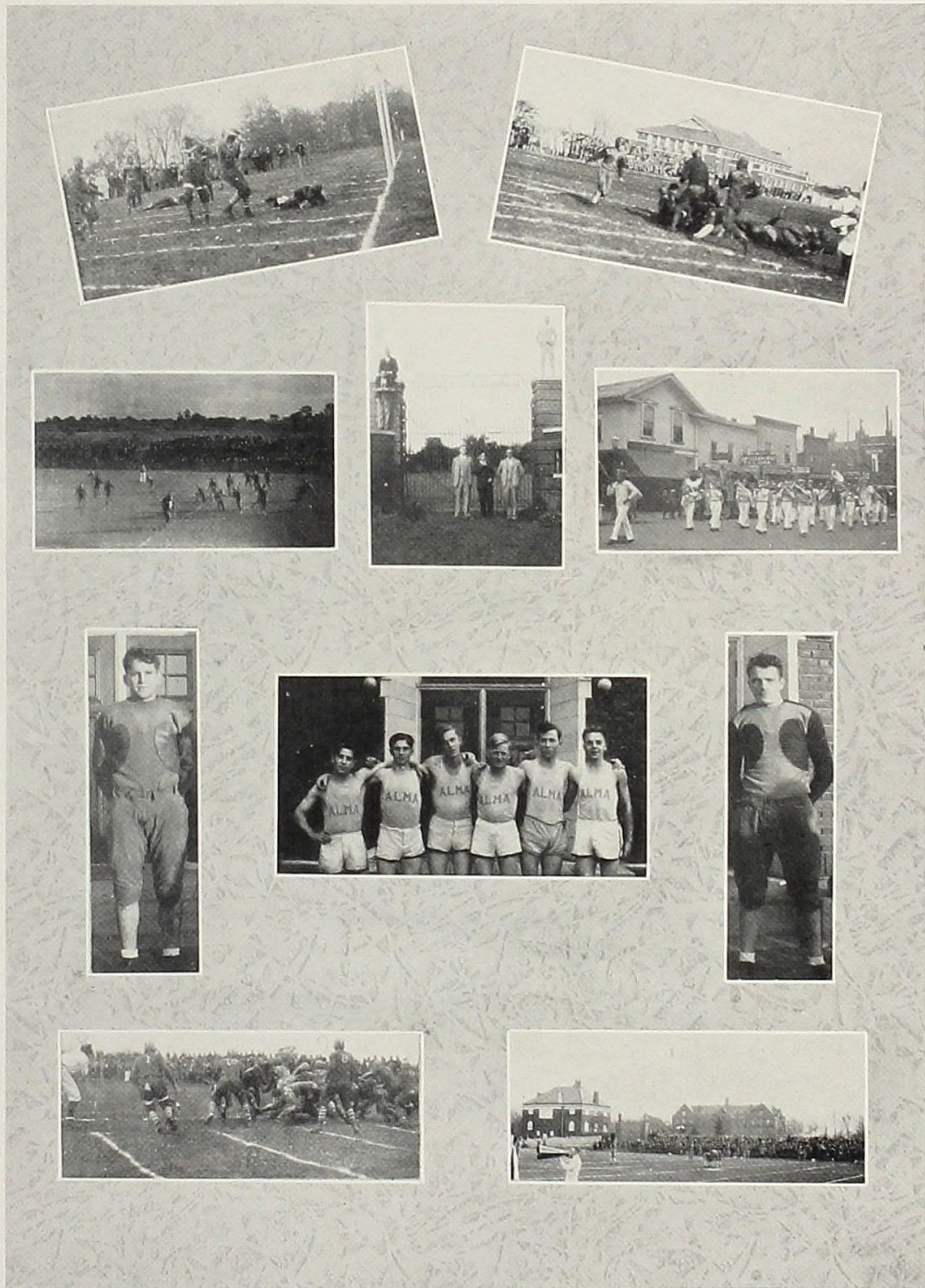
Marching, gymnastic drills and exercises, and apparatus work, occupied the remainder of the time until second semester. By these are developed rhythm, grace of movement, and co-ordination of muscles. Tumbling, relay races, and high jumping are included by way of variation and competition.

With the second semester, Basketball and Volleyball come to the front and will occupy the interest of the girls for about one half of the semester. From all indications, competition for honors will be quite keen, for both the Sophomore and Freshman classes can boast of some good athletes. Although these competitive games will occupy the majority of the time, the exercises will continue, for an interesting program can not be one-sided.

The last half of the semester comes just when everyone is waiting for Spring, and the interest in athletics turns to Archery, Tennis, and Baseball. If possible, a Tennis Tournament will be held, so that, again, Alma girls may vie in competition for the honor of Tennis champion.

The girls have shown a splendid spirit of co-operation and interest in the Athletic program—which will make Women's Athletics a definite activity on the campus of Alma College.

MARCOON AND CREAM



Feature

CALENDAR

SEPTEMBER —

17. Frosh!
18. More Frosh! Helen meets the college.
19. Where do they come from!
20. Frosh elections—campus politicians hang out shingles.
21. Teas, receptions, etcetera. Faculty eat strawberry shortcake with Mr. and Mrs. Prexy.
Freshmen girls learn law and order in the wee sma' hours.
22. Frosh, led by Harry Wehrly, show the Sophs up. No flag pole, however greased and wired, can hold those boys.
23. And we all go to church.
24. Now we buy books—but why!
25. First edition of Almanian. Freshmen scandalized.
26. Faculty feasts again—with faculty.
27. Drama Club gets going. Takes in new members.
28. Maroon and Cream staff announced.
Ferris Institute beats Alma football squad 13-7. Bright prospects.
First Council Dance—a speedy party with lots of borax on the floor.
29. K. I. Pirate Party at Wright Hall for Frosh girls. Lotsa cider!
30. Ann Marie and Lola haunt the scenes of their crimes.
Ann Marie decides to stay and keep property rights on the Chrysler 70.

OCTOBER —

1. Alpha Theta holds open meeting for Freshmen girls.
2. Personnel of the Glee Clubs announced. Just how much talent can one college hold, anyway?
3. Senior Skip Day—the traditional good time—bacon and eggs, baseball, jumps in the lake, and many “fish stories” as a result.
4. Y. W. Jungle Spread for new girls on campus.
Pajama Parade—bigger and better (?) “—we learn about Paul Revere.”
5. And then there was a “ducking party—”
6. Philo Fete, a very enjoyable Japanese affair for new girls.
7. And then came Sunday.
8. Let there be no mistake—today we really go to school.
9. Another Almanian. More “low-down.”
K. I. open meeting.
10. Who said, “There will be no high-dive tonight”?
11. Cast of Drama Club play, “The Butter and Egg Man,” announced.
12. Alpha Theta hay ride— and Kay walks back, in the rain, too.
13. Football game at Olivet won by Alma, 19-2.
14. More Sunday.
15. Philomathean open meeting.
Alma Frosh trim Hope Frosh to tune of 25-0.
16. Glee Club elections.
Alma College admitted to the Michigan Women's Debating League.
17. Sorority pledge night. And with the dawn came peace (?)
18. Zeta Sigma smoker.
19. Alma Frosh beat Traverse City High School team, 0-0.

OCTOBER —

20. Another Alma victory. Alma 12, Hope 0.
21. Sunday.
22. K. I. Pledge Dinner.
23. Alpha Thetas show pledges a good time.
25. Dr. James F. Dickey addresses chapel.
26. First mass meeting and Dr. Jimmy speaks.
27. Parents' Day.
Football game—Alma 18, Hillsdale 0.
Freshman Formal.
29. Philo Pledge Dinner.
30. Football dinner at College Inn.
31. Hallowe'en—the kids ran wild and there were false alarms, serenades, and plenty of green paint.

NOVEMBER —

1. Auspicious day—the editor can find nothing exciting for this day except a reminder of the aftermath of the night before.
2. “Butter and Egg Man” given with great success. An honest-to-goodness diamond ring changes hands (and fingers).
3. Alma College Homecoming. The Methodists run off with the bacon to the tune of 9-6. The usual dance and an unusual amount of homecomers.
4. Sunday. “Drevvie loves me” is back for the week-end.
5. First Student Chapel devoted to discussion of Freshman discipline.
6. Then there happened an Almanian and more light.
7. Women's debate group organized. Mary K. Burt elected manager.
9. The editor must have slept all day yesterday because nothing seems to have been accounted for.
Wright Hall “gets hot” and has chimney fire with few sparks and much excitement.
10. Michigan B Team wins over Alma, 33-0.
12. Alma Frosh win over Central State Teachers, 13-0.
14. Pledge Day for Freshmen fellows.
15. Another fire on campus—Music House this time.
16. Chapel mass meeting—the faculty sporting blood is aroused to the extent that they give a yell all by themselves.
17. Kazoo wins a muddy battle with Alma, 12-0.
19. Wright Hall girls entertain in chapel and “Loud Speakin' Papa” threatens the composure of even a staid faculty.
20. Karpp, Pezet, Erickson named on All-M. I. A. A. Football team.
23. Eastern Star put on musical comedy “Rosetime.” Our collegiate misses turn chorus girls, with some small casualties.
24. Alpha Theta stag party.
25. Now it is Sunday.
26. Freshmen exams ended at last after much burning of midnight oil and the application of wet towels.
27. The “afterthought” (profuse apologies to the uninitiated) lost out tonight.
28. We beg, borrow, or “hop” rides to our respective domiciles.
29. Thanksgiving Day—alas, he was once “a good bird.”
30. We struggle to find an appetite.

DECEMBER —

2. Early arrivals at Wright Hall find high revels going on, candies, mousse, etc.
3. School again—all the “left overs” vow they had the best time.
4. Frosh recuperate from mid-semester—that is, some do!
7. Mr. Herbert Dow of the Dow Chemical Works in Midland speaks in chapel on the Protective Tariff.
8. Zeta Sigma Formal—much borrowing of apparel for the tea.
10. The Adams—Erickson chapel program packs the gallery. “Newberry Red” again delights his audience with “The Wreck of the ‘49.”
11. Frosh edition of Almanian makes a verdant appearance—but quite an intriguing change. We suspect collaboration.
12. Dr. Wm. Locke, missionary to China, speaks in chapel on the relation of youth to the Parabola of Life.
13. Annual Football Banquet at Wright Hall. Wally Pezet, captain of the 1929 team. The “klaxon” proves invaluable to unwonted Scotch eloquence.
15. The Philo Fair. One of the few financial successes on the campus.
16. Then came the spats.
19. Wright Hall girls have “kid’s party”—we had Santa Claus, ‘n everythin’.
20. Phi Phi Alpha gives annual Christmas Party at the Elks.
21. We depart vacationward to buy our Christmas presents. Merry Christmas, everybody.

JANUARY —

7. We’re back and how we do talk to our dear profs. Sure, exams are coming!
11. We lose to Albion, 33-13.
12. The Student Council gives another “get-together,” this time at Wright Hall. As if most of the excitement didn’t live there already.
14. The girls’ sextette entertains chapel—faculty included. Those sport outfits! And they sing “There’s a Rainbow Round My Shoulder.”
16. Girls’ oratorical contest. Mary Kay Burt wins first place. Lewis Salmon wins second.
17. Men’s oratorical contest. Homer Barlow wins first. Clifford Erickson wins second.
18. Hope outplays the Alma Quintette, 30-25. And the struggle of the evening results in the Beta’s victory over the Phis, 14-4.
19. To make up for last night Alma trounces Olivet, 24-16. And the Zetas likewise sweep the floor with ye poor Phis.
20. Sunday comes and so does Janet.
21. Last Monday’s chapel program gets a break by being termed “vaudeville.”
22. Prof. Tyler has an article published in the Michigan Educational Journal.
23. Alma beats Kazoo here, Alma 17, Kazoo 14.
25. Oh yes, let’s see. Didn’t some one say we had exams about now?
26. Recovering from buck fever at sight of those exam questions.

FEBRUARY —

1. Alma College Band starts on annual trip through Michigan.
4. Frosh chapel. Tony impersonates “Al” and Fritz censures poor sportsmanship in receiving semester marks. Tau Sigma Gamma (The Travel Study Club) is formally organized with Edna Boyd as the first president.

FEBRUARY —

5. Alma 38, Central 20. ‘nuff said!
8. The band returns. “Tis an ill wind that—” Alma 51, Hillsdale 26.
9. Once upon a time the Phi Phi Alphas had a banquet at the Park Hotel. And those bracelets are not so bad!
11. We have a Wherly-Ramaker chapel program. And Hi-Pockets forgets how to stop.
13. We lose a debate to Albion.
14. Julius Caesar comes to Alma, ala Stratford Players. Our Drama Clubbers get in on the mob scene and Bea hobnobs with royalty himself.
15. Women’s debate team defeated at Kalamazoo.
16. Negatives lose debate to Central. K. I. Valentine Party. Almost enough valentines to go around, too.
18. New members of Phi Sigma Pi honorary society announced in chapel.
20. Central evens the score by a win of 13-12. Le Cercle Francais organized. Helen Frances, president.
22. Washington Tea at Library. The negatives beat Western State. Alma wins over Kazoo by Albaugh’s free throw. Score 26-25.
25. Rev. Gaige of the First Presbyterian church of Ithaca talks in Chapel on the subject of “Talents.”
26. The college mourns the death of Prof. Albert P. Cook.
28. Prof. Cook’s funeral. Albion game turns out 35 to 29, after all.

MARCH —

1. State Oratorical contest at Alma. Homer Barlow wins first place.
2. Hillsdale wins over Alma 29-26.
3. The College C. E. play, “Kajundu,” a “howling” success. Helen Sharrar, graduate of the college, dies of pneumonia, in Kalamazoo.
4. Chapel’s sedate ears assailed by more jazz—Pom’s sax officiating.
5. Kit has birthday party. Baby-blue predominates.
6. Hope loses to Alma in final game 37-32.
7. Model Assembly study group organized. Gilbert Scheib elected president.
8. College Library holds “open house.” Collegians turn officials when the district basketball tournament is held in the gym. Sure—admittance free on an official badge.
9. Gussin placed on the All-M. I. A. A. basketball team.
11. Maroon and Cream executives give chapel program and Harold has no speech because he had “other more important business last night.”
12. Post-mortem services for King Baseball held in chapel.
15. “Craig’s Wife” brings more laurels to the Drama Club. The question still persists—did Dinty kiss Mrs. Craig?
16. Pioneer Hall “gets hot” under the collar and produces a promising blaze only to be foiled by our firemen, Dinty and Harry. The Sophomore Sport Party, due to weather conditions, is successfully soggy.
17. The Girls’ Glee Club give a sacred concert in Vassar tonight, and report a good time due to “good eats and lots of them.” We like Vassar!
18. Bill Owen treats chapel to some fine piano playing this morning. Rachmaninoff, ‘neverthing!

MARCH —

21. Irene Beuthin elected president of the Women's Senate. Bass Lake catches three early birds, pardon, mermaids.
22. Alma affirmative debaters beat Hope by an audience decision of 49-15.
23. The Betas make merry in their annual dinner-dance at the Park Hotel. They certainly know the way to a woman's heart is via "favors."
24. Easter Breakfast comes prematurely but is made very welcome. Of course it snowed, but we all looked for that.
25. Miss Ursula Hubbard, secretary of the League of Nations Association, talks in chapel; meets with the International Relations Study Club to discuss the Model Assembly which will be held at Ann Arbor April 19-20.
26. The Almanian warns campus-ites that Spring is on the wing. As if we had to be told.
29. Last day of school. Marge, Ann, and Mary K. chaperone the hall-late permission and more fun!

APRIL —

9. School begins. The home stretch!
10. Gloom in camp. The poor glee club girls are wondering why Prof. can't desert his helpless little boys for one night.
11. The cloud lifts—prof. leaves his proteges to struggle for themselves out in the wilds of Saginaw while he helps the girls give one of the finest concerts ever known to the campus.
12. Francis Wood chosen general chairman for the annual J-Hop, May 4th.
13. Drevvie and Melba are married. Good luck and best wishes!
15. Maroon and Cream sponsors a "near-tragedy" in chapel. And Brute turns chaplain.
17. Jake commences curricular activities at Golf College. He and Chief take turns in "caddying."
18. The Reverend Dr. John Timothy Stone of the Fourth Presbyterian Church in Chicago is announced by President Crooks as the commencement speaker this year. He is also president of the Presbyterian Theological Seminary.
19. We send nine delegates to the Model Assembly of the League of Nations at Ann Arbor. Prof. Journey manifests his great faith in the driving ability of the opposite sex.
20. The delegates find that it rains despite a League of Nations. They also justify their existence by speaking in Assembly. In spite of the rain and the weather and the Assembly meetings, they report a good time.
21. Harold limps back in the Essex. His cargo say that all went well until the bill was presented.
22. Three of the delegates to Ann Arbor provide a little amusement in chapel. Bill talks of "the eats"—Mary K., of the "colorful crowd," while Homer gets down to business. Everyone finally gets the impression that great things happened to our official representatives.
24. Men's Glee Club concert given in the Presbyterian Church. The Harmony-Raisers give an excellent repetition of the sextette "vaudeville performance."
26. K. I. House Party materializes after the Dean receives many telegrams, specials, etc. It goes IN pieces, not TO pieces. Ask Holly and Perry.
27. Philo dinner-dance at Park Hotel. Those favors are deceiving but nice. More money spent!
28. Sunday—we have chicken a la king—mmmm. The K. I's return with no casualties.
29. Another good chapel today. All we missed was "Newberry Red" with his bandana.
30. Mr. and Mrs. Scattergood give silver loving cup to be presented at Commencement exercises to the student adjudged most worthy of the honor.

MAY —

1. Robert Hunn, a Freshman, died this morning following an operation for appendicitis.
3. The campus is being treated by beauty experts. Our posterity may bless us for more shady nights.
4. The Junior class scores a success with the Hop. Beta Tau Stag at the Wright House. Zetas have open house this afternoon.
6. Coach treats the chapel to the "once-over" as well as the athletic situation.
7. Question holding most interest on campus: "Why didn't Jake go to the Hop?"
15. Campus Day—the best men win the tug and we forget our troubles at the dance afterward.
17. Drama Club presents "The Thirteenth Chair."
18. K. I. dinner-dance at the Park Hotel. All nominations for campus offices in today. Keen competition.
23. Campus elections.
24. Alpha Theta dinner-dance. Philo have house party at Crystal.
31. Exams begin! Woe (also war) in camp.

JUNE —

1. We rest up from yesterday's campaign—lots of fatalities reported. We also plan Monday's battle.
- 2-3-4-5—And still we stack our brains each night and house clean each morning.
6. Whoopee! Exams over today. Party tonight at Wright Hall. All furrowed brows quite ironed out.
7. "A" men have spread. Farewell chapel services. Student-Alumni party in Gym. And as usual at 10:30 there was nothing left but the orchestra.
8. Alumni Day. Senior class breakfasts with Prexy. Oh yes, when we grow up we hobnob with royalty, and such. Everyone eats luncheon in the grove. Out where the ants begin. Alpha Theta banquet. Senior Promenade. President's reception.
9. Baccalaureate.
10. Commencement. Philo Breakfast at Wright House. Rev. Dr. John Timothy Stone, President of the Presbyterian Theological Seminary, Chicago, delivers Commencement address. Commencement luncheon at Wright Hall.

EDITOR'S NOTE:

This department must decline to answer any poison pen letter, bomb, etc., coming as a result of apparently insulted personages. After all, it's been a wonderful year; and don't we hate to leave our Alma Mater? Absolutely!



— HUMOR —

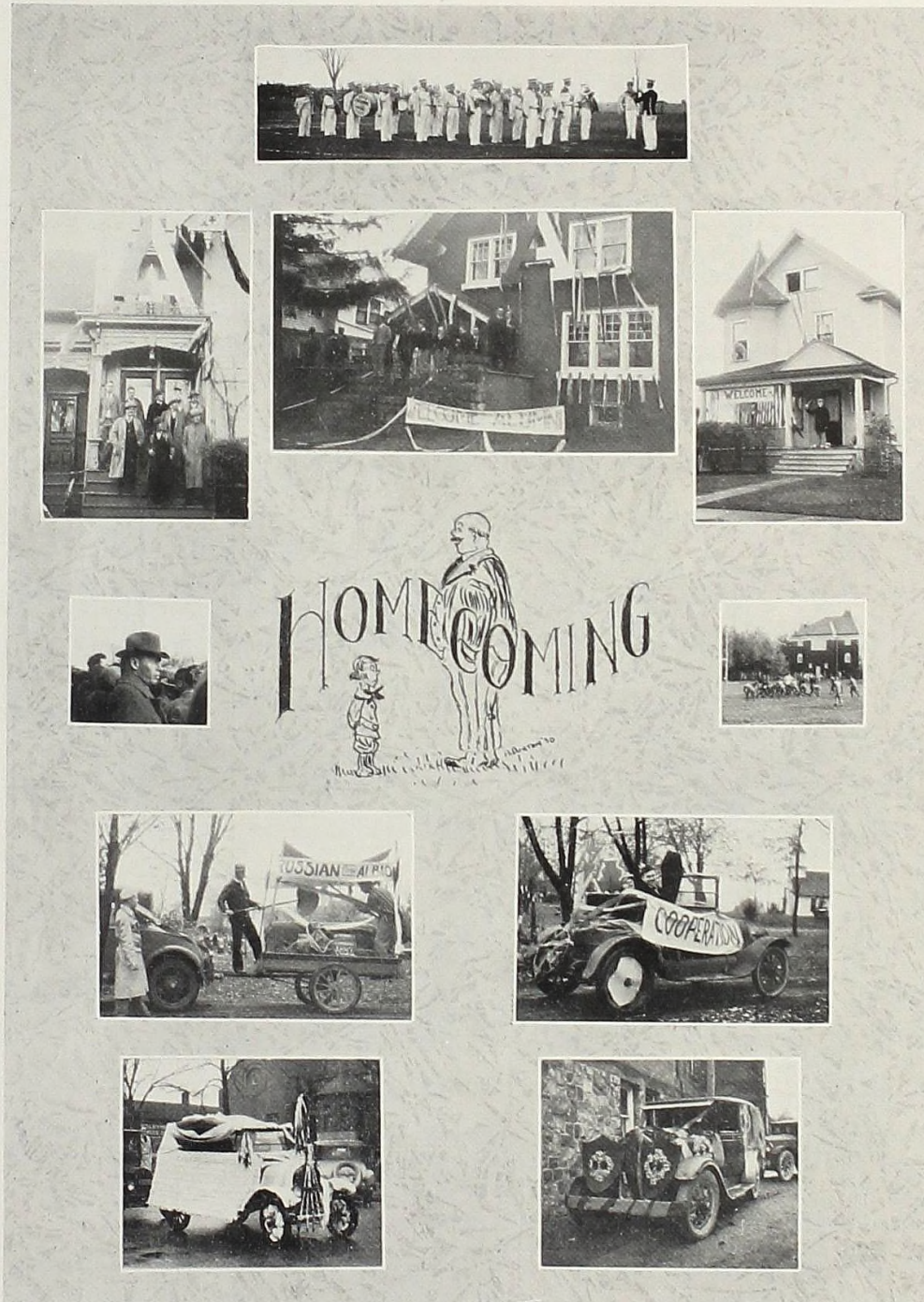
It has been suggested to the Joke Editor that he insert his picture whenever a lack of material is evident. The Editor does so very obligingly by inserting a word picture—Blank—.

DO YOU REMEMBER WHEN

- Arozian couldn't dance?
- Schimmers could?
- Buffalo wore spats?
- Dobber had his last date with Tony?
- Our Gilly first met Connie?
- Liz could behave herself?
- Anderson wore a derby?
- Bugle missed a free dance?
- Barlow said: "This one is on me, boys"?
- Pomeroy was modest?
- Buchanan cinched the debate for Alma?
- The Athletic Board of Control voiced its own thoughts?
- Alma played baseball?
- Skinny Heartt qualified for a driver's license?
- Wright Hall cats didn't purr?
- Horn made the Glee Club?
- Lefty Lange was "up in the air"?
- Gussin sang without a "nasal"?
- Betty and Win didn't hold hands?
- Karpp proposed women membership in the "A" Club?
- Knapp and Emily went steady?
- Our Gilly favored paddling?
- Chief had his first date at Wright Hall?
- Dickinson was absent from a Sunday lunch?
- Joe Taylor went to Europe?
- Something happened to Wally's Eva?
- Chief had an inferiority complex?
- Pete Boutin had a superiority complex?
- Bob Budd was an athlete?
- Bret came down to earth?
- Grogan beat Wally's time?
- Goldy was left at the post?
- Red told the one about the 100%?

Dean Mitchell—Your trouble, Mr. Carter, is in remembering dates.
 Beau Brummel—You've got me all wrong, Dean, I never missed a date in my life.

Bugle—And how come you were born in Poland?
 Walter—Well, you see, I wanted to be near my mother.



— HUMOR —

Tag day in Alma—Please, Mister, buy some Christmas seals.
Coach—I'm sorry Miss, but I bought my wife one last year and I'm still paying for it.

His girl—I heard you made the football team.
Brownie—Oh, the other boys helped a little, too.

P. Boutin—Lefty, do you know the jackknife dive?
Lefty—There ain't a night club in town I haven't been to.

Prof. Ewer—I see your wife has a new pair of rubber heels.
Coach—Yes, I promised to buy her a new spring outfit.

Angell—Did you know they have no insane asylums in Arabia?
Albaugh—Why is that?
Angell—Because there are nomad people in the country.

Walter—Hear about the fellow who invented a way to look thru a brick wall?
Potter—No what is it?
Walter—A window, you sap.

Tony—Who is the man in the blue suit, Darling?
Jake—He's the umpire, Darling.
Tony—And why does he have that funny wire thing on his face?
Jake—To keep him from biting the players, Darling.

Babe—What piece do you like best?
Lewise—"All alone, by the telephone,"

1st Clizbe—Say, Red, I hear that you know the Cow song.
2nd Clizbe—Sure. Cud she, I'll say she cud.

Neighbor—Your boy is graduating from college rather late. What kept him back so long. Is he delicate?
Mrs. Westfall—No, he is an athlete.

Pomeroy—Did you know that Joe Taylor almost drowned last summer?
Spike—No, how was that?
Pomeroy—He almost flunked out of the Floating University.

— HUMOR —

Babe—Isn't it remarkable how all the girls go to bed at the same time every night?

Fritz—That's easy. Bugle comes up and blows taps every night.

Emma—Did Al kiss you good night when he left?

Elaine—No, it was too late.

Rich Old Lady (to Horn working in Summer Hotel)—"And Waiter, please have my chops lean.

Horn—Yes Ma'am. Which way, Ma'am?

INSEPARABLES ON THE CAMPUS:

George and Babe
Dale and Ann Marie
Bea and Emily
Dean and Kessel
Clancy and Saginaw
Albaugh and Angell
Crowell and Williams
Elaine and Emma
Gil and Connie
Chief and Gil
Budd and Budd
Betty and Win
Hebe and Sis
Pomeroy and Pomeroy

Elaine—What's the matter with Tony? She didn't go to gym today?
Emma—Oh, just a little high blonde pressure.

Helen—I could dance on like this forever.
Schimmers—Oh, don't say that. You're bound to improve.

Royer—When you throw a match in the air does it light?
Cook—Why, no.
Royer—Newton must be wrong then.

Dean Mitchell—What is that stuff on my new car? Where have you been?
John—Oh, that's only traffic jam.

Who does this sound like in Pioneer Hall? I'm a great football player, I'm a greater basketball player, I'm the greatest baseball players."

— HUMOR —

We would like to see the McQuadrangle—Tony, Dobber, Jake, and Gordy, take sides.

Gil—I believe this school is haunted.
 Chief—Why is that?
 Gil—They are always talking about the school spirit.

Tony is coming out for football next year. Coach says she has great possibilities as a kicker—Dobber to Jake to Gordy.

Prof. MacCurdy (in Geology)—Now if I tell you the name of this rock, will you remember it?
 Goldy—I'll take it for Granite.

The Campus day elections showed a unanimous vote for Clyde Carter for Postmaster.

Crowell—Got a match, Carl?
 Williams—No, but here's my lighter.
 Crowell—How am I going to pick my teeth with that.

Goldy—Say, what's this about Lefty playing first fiddle?
 Marion—That's all wet, he couldn't even play a mouth organ in my band.

Tony—I'm having a bird of a time at this college.
 Dobber—Sort of a Round Robin, isn't it?

Villa's latest song—"I wonder what's become of Clancy."

McClelland—My father is an excellent sculptor.
 Dinty—Well he certainly made a fine bust of you.

Prof. Journey—The white whites are blondes. What are the black whites?
 Clancy—Buffalos.

Budd (to Mary K. walking down the street)
 May I come too?
 Mary K.—You'll never come to, unconscious.

— HUMOR —

Jim—I hear Hebe and Hort hit each other last night when they were handcuffed.
 Frank—Yes, sort of a hand-to-hand-cuff.

Simmons—"What's the idea of wearing my slicker yesterday, and leaving me to get soaked?
 Arozian—Well, I had your suit on and I didn't want to get it wet.

WHAT WOULDN'T WE GIVE TO SEE—

- A boxing match between Dean and Kessel, and Elaine refereeing?
- Dan Adams answering the ad for "stalwarts for Julius Caesar"?
- A wrestling match between Highpockets and Bob Dickerson?
- A special phone for Amos and Dorothea?
- The restoration of paddling parties?
- Brown turning down Kipke's offer?
- Charlie Mann trying to be serious?
- Carter settle down to one girl?
- Dan Adams shave his upper lip?
- Ann Marie without Dick?
- Hebe in a Tux?

Hobie—Say, Clyde, how do you get these girls? Do you tell them much?
 Clyde—Oh, no, just a line.

Bret Heartt assures us that his car now carries full coverage.

Arozian (in chapel)—Say, Highpockets, play "I Faw Down, and Go Boom."
 Highpockets—I'll play it, but in Chicago, "They go boom and you faw down."

Forbes—And how much to you charge for a haircut?
 Barber—Fifty cents.
 Forbes—And how much for a shave?
 Barber—Twenty-five cents.
 Forbes—Then give my head a shave.

Coach—What are you turning your suit in for?
 Dean (Scotch)—Because you won't let me shoot all the free throws.

Carter—Now, Sugar---
 Lewise—(excitedly) Yes, yes.
 Carter—always goes good with coffee.

Frosh (at first dance, pointing at Bret dancing with Miss Biondi)—What courses does Mr. Heartt teach?



Advertisements
 Advertisements

We wish to express our sincere appreciation
 to the advertisers who have helped to
 make the 1929 Maroon and Cream
 a success - May we urge that
 you look through this sec-
 tion of advertisements
 and show your
 gratitude

by

Patronizing Our Advertisers

-- PROFESSIONAL DIRECTORY --

E. T. LAMB, M. D.

BAHLKE BLOCK
ALMA, MICH.

F. J. GRAHAM, M. D.

POLLASKY BLOCK
ALMA, MICH.

CHAS. F. DuBOIS, M. D.

POLLASKY BLOCK
ALMA, MICH.

R. B. SMITH, M. D.

Eye, Ear, Nose, and Throat

POLLASKY BLOCK
ALMA, MICH.

DR. W. R. MACINNES

DENTIST

DR. H. B. LEHNER

DENTIST

DR. S. J. HIGELMIRE

Osteopathic Physician

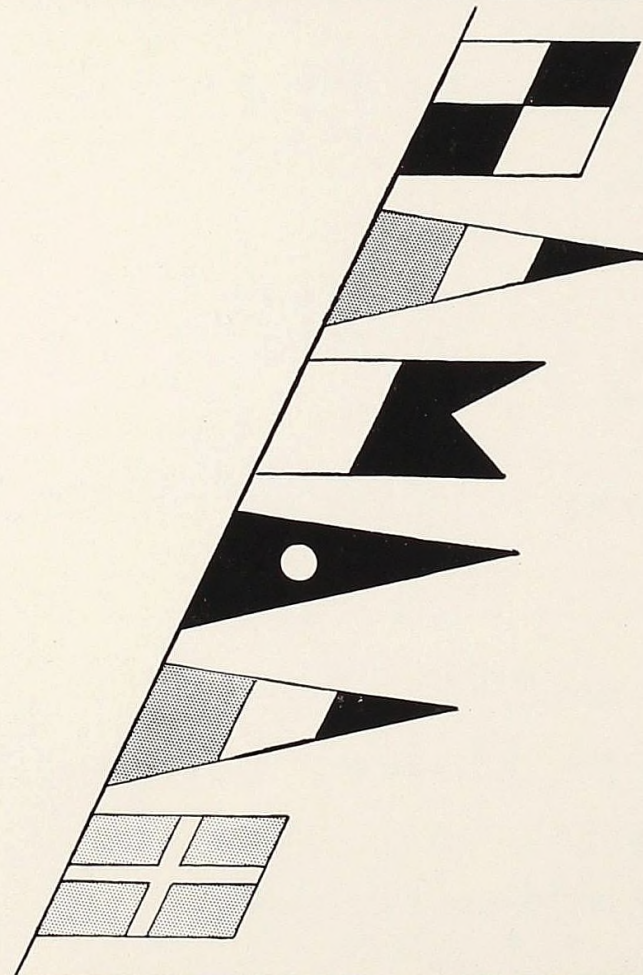
ALMA STATE SAVINGS BANK BLDG.
PHONE 86

DR. E. R. REMSBERG

Osteopathic Physician

116½ EAST SUPERIOR STREET
ALMA, MICH.

ANNOUNCING



THE NEW REPUBLIC FLEETMASTER

Republic's greatest contribution to motor truck transportation.
REPUBLIC MOTOR TRUCK CO., INC., Alma, Michigan
Famous for 16 years as manufacturers of commerce carriers for the world. Send
for the detailed specifications and illustrated literature on this new Republic truck.

★ The pennants spell the
word "Leader" in the
Navy signal code

Winslow Brothers Drug Store

Parker Pens
Arctic
Ice Cream

Opposite Strand Theatre

Ida—Why did you let go of the wheel?
Zimmie—I wanted to see if I had a flat tire.

Ida—Why, you mean thing.

~

Merriel—Were you ever in love?

Trudy—That's my business.

Merriel—How's business?

~

Hobie (at the Zeta house Sunday morning)—Hey, you fellows wake up.

Ev—I can't wake up.

Hobie—Why not?

Ev—Because I'm not asleep.

~

Dinty Moore—Is Helen popular at home?

Mr. Logan—Popular! Why I can't get within three blocks of my house.

COMPLIMENTS OF

Consumers Power Company

POWER — SERVICE — LIGHT

Everything Electrical

~

ALMA DISTRICT TERRITORY

Alma
Mt. Pleasant
Ithaca
Clare
Coleman
Rosebush

Belding
Greenville
Shepherd
Merrill
Breckenridge

Hemlock
Wheeler
Farwell
Smyrna
Forest Hill

District Office—311 N. State St., Alma

Elsie—Bert lost ten pounds in two weeks by dieting.

Janet—I tried that too, but I couldn't keep my mind on it.

~

John M.—My father says that he thought nothing of studying five hours a night.

Jake W.—Well, I don't think so much of it myself.

~

Mickey—Where did you get that lovely lace dress?

Mary Lib—That isn't lace. I've just been to Chicago.

~

And did you see that sign on Pat's window, "Take home a brick, you may have company"?

BURGESS

Drugs Stationery

Where all the
out of season
games are
played

!

ASK FOR IT BY NAME



Superior
**HONEY GIRL
BREAD**



A delicious, nourishing food for all the family

Made of the best ingredients by

SUPERIOR BAKING COMPANY

The Home of Quality Bread

PHONE 128

ALMA, MICHIGAN

Compliments
of

Chas. R. Murphy

Drugs

G. V. Wright
Mortician

ALMA

ST. LOUIS

Fritz—Did you see how nervous Buchanan was in the play, and how he kept grabbing Trudy?

Hilda—Yes, he couldn't get a grip on himself.

~

Salvation Army girl—Will you give a quarter for the Lord?

Prof. Journey—How old are you my young lady?

Salvation Army girl—Eighteen, sir.

Prof. Journey—Well, I'm forty. I'll be seeing Him before you, so I'll hand it to Him myself.

~

Clancy (holding up a lamp post in front of the Bancroft)—Say, how do you get out of this place, anyway?

COMPLIMENTS OF

ASA SHOLTY

*Wholesale and Retail
Milk Dealer*

~

I SUPPLY MILK TO WRIGHT HALL

Gasoline, Motor and Fuel Oils

~

GRATIOT COUNTY OIL CO., INC.

ALMA, MICHIGAN

Opposite the Alma Roller Mills

Potter—Why are you jumping up and down like that?

Novak—I just drank some medicine and I forgot to shake the bottle.

~

Joe—I wonder why they say "Amen" and not "Awomen."

France—Because they sing hymns and not hers, stupid.

~

Dean Mitchell—In what battle was General Custer killed?

Kennett—His last one, sir.

Cleaning—Pressing
Repairing

We Keep the College Men
in Trim

Alma City Dry Cleaners
and Tailors

WHOLESALE and RETAIL FRUIT

Receiver and distributor of car load lots. Fresh fruits and vegetables of all kinds on hand at all times.

FORTINO BROTHERS

CANDY

ICE CREAM

CIGARS

Across from the Strand Theater

The Badges, Rings, Favors and Programs

for the Fraternities and Sororities at Alma College are furnished by

**Burr, Patterson & Auld
Company**

Manufacturing | Fraternity Jewelers

Through Their
Michigan Branch Office
Church at South University
Ann Arbor, Michigan
David H. Glass, Jr., Manager

Liz—I wonder why lobsters are red?
Lewise—If you were in a glass case without any clothes on you would be red too.

Carter—Honestly, honey, you're the first girl I've ever loved.

New Girl—Gosh, you must think I don't realize it!

Janet—How did that contest between Sandy and Mac come out?

Ike—You mean to see who could stay under water the longest for a nickel?

Janet—Yes.

Ike—Oh, they both drowned.

Dale—I never knew love was like this!

Ann M.—Neither did I. I thought there were more flowers and candy to it.

Dependable Service

Home
Lumber and Fuel
Company

Phone One-Nine

-- Lobdell -- Aircraft Control Wheels

are
Standard Equipment
on
Leading Aircraft Transports,
Seaplanes and
Amphibeans

ROLL CALL

Curtiss (Navy)	Keystone
Columbia	Laird
Eastman	Loening
Ford	Martin
Fokker	Sikorski
Flamingo	Stinson
Hamilton	Travel Air
Ireland	Verville

Manufactured by—

The Lobdell-Emery
Manufacturing Company
ALMA, MICHIGAN

Also Manufacturers of Steering Wheels for Automobiles,
Trucks and Boats—Bicycle Rims—Herculease
Folding Chairs.

COMPLIMENTS
OF

TRIANGLE OIL COMPANY

Cor. Michigan & Superior Streets
Phone 83

E. Superior Street Coal Yard
Phone 35

ELENBAUM & SMEDBERG
Proprietors

The greatest difference in the world:
The way Dale Dawson says, "oh, dear"
and the way Clyde Carter says, "oooooh
Deeeeear."



Jimmy—Coming out for baseball? I
hear you were pretty good in High
School.

Al—Oh, yes, I made the All Thumbs
Team my last year.



Villa—Ooooooh Emma, did you ever
dye eggs?

Emma—No, but I've tried them after
they were dead.



Prof. Kaufman—They say bread con-
tains alcohol.

Simmons—Is that so? Let's drink a
little toast.

TEXT-BOOKS
ATHLETIC GOODS
STATIONERY
SUPPLIES



College Supply Store

"JUST FOR SPORT"

Dean Mitchell—And how did he treat
his feudal slaves?

Buff—They lived in a terrible manor.



Clyde—Let's play postoffice.

Any Wright Hall Girl—Oh, that's such
a kid's game.

Clyde—Not the way I play it.



Hebe—Hey, Frank, what are you run-
ning for?

Frank—I'm going to stop a fight.

Hebe—Who's fighting?

Frank—Just me and another fellow.



Lefty—How much does Helen of Troy
weigh?

Kayo—I don't know anything about
Troy weight.

Compliments
of the

A&P Meat Market

L. SOVA, Manager

ALMA COLLEGE

The Students

of Alma College have presented their activities in the Maroon and Cream

The Faculty

of Alma College have presented many of their products to graduate
schools, where high records have been made; to professional schools, where
honors have been taken; to business and professional life, where success
has been achieved. The faculty standards of Alma College are very high;
the teaching is superior.

For catalogue address:

DEAN JAMES E. MITCHELL, LL. D.

Compliments
of

The Strand Theater

C. A. MILLER, Mgr.

Prof. Spencer—Dick, is that your cigarette butt?

Dick—Go ahead, Dad, you saw it first.

Waiter—Haven't they given you a menu yet, Sir?

Horn—Oh, yes, but I finished that half an hour ago.

Chief—And does Coach Campbell have the team under control?

Wally—Does he? Say, every time he gets a headache everyone on the varsity takes an aspirin!

Emma—Oh! How nice to be an aviator.

Lefty—Yeah. Wanta fly?

Emma—Sure I do.

Lefty—All right, just a minute, I'll catch you one.

SENIORS—We'll Miss You.

JUNIORS
SOPHS—We Appreciate You.

FRESHMEN—We Welcome You.

—Pat's Drug Store

We have something on the Professors at last. We can do some things that they can't. We can sleep while they're talking and they can't.

Zimmerman—And what did you like best in England?

Dean Mitchell—Oh, that quaint old custom of going to the dogs.

Al K.—How do you play "hookey" from a correspondence school?

Hugh M.—I send them an empty envelope.

We have just received the news that the first short story was by a Scotch author.

Charlotte—Don't you just love overpowering men?

Maurine—Gracious! I've never overpowered any men.

PHOTOGRAPHS *Tell the Story*

The Photographs in This Book
were taken by

Baker

STUDIO:
117 West Superior Street
Phone 258

Distinctive

APPAREL FOR MEN

—AT—

PRICES REASONABLE

Hamilton's

TRAVERSE CITY -- ALMA

Cleaning, Pressing,
and Dyeing
for You

STAR DYERS AND
CLEANERS

PHONE 92

Bea—Clyde asked me for a kiss last night.

Emily—What did you say?

Bea—Same old thing.

Emily—What did he do?

Bea—Same old thing.

Prof. Hamilton—Why don't you answer me?

Wagner—I did, Professor. I shook my head.

Prof. Hamilton—But you don't expect me to hear it rattle up here, do you?

Frances—If you kiss me I'll scream. Silence.

Harry—Well, why don't you scream?

Frances—Don't interrupt me. I'm screaming.

Serval Gas Refrigerators
A.-B. Gas Ranges
Chambers Fireless Gas Ranges
Humphrey Automatic Water Heaters
Handly Brown Water Heaters
Radiant Fires Akme Flues
Home Incinerators

Michigan Federated Utilities

Gratiot County Division

Phone 292

ALMA, MICHIGAN

Phone 292

If It's Done with Heat—You Can Do it Better with Gas

Kayo—I've got a date for Friday, but I don't know whether to keep it or not, Friday is unlucky.

Charlie—Aw, don't be foolish. Look at Washington, Gladstone, Hamilton, and Napoleon, they were all born on Friday.

Kayo—Yes, but look at them now. They're all dead, aren't they?

Carson (at Jimmy Hanley's)—Who is that big fellow over there?

Karpp—Oh, he's a bookmaker.

Carson—What publishing company does he own?

Uncle Charlie (in Bible class)—Mr. Westfall, who defeated the Philistines?

Jake—The Yanks, four to three, in ten innings.

**RAINBOW
TRAIL
INN**

Cleanliness, Service
and
Pleasant Atmosphere

Next to Sawkins Music Store

T. N. COMBS, Prop.

Compliments
of

**SYMONS BROS.
& COMPANY**

WHOLESALE GROCERS

Alma, Michigan

Compliments
of

NILES & SON

Luchini Confectionery

Candy and Soda
S. SIMI, Prop'r.

HOLLAND FURNACES

Make Warm Friends

P. L. BLANCHARD
Manager

314 State St. Phone 201

Compliments of

The Wright House Barber Shop

ALMA ROLLER MILLS

J. H. McFARLAND, Prop.

Beans - Grain - Coal - Cement
Flour - Feed and Seeds

ALMA, MICHIGAN

CODE: ROBINSON

TELEPHONE 91

Maurine—Why does a stork stand on
one leg?

Charlotte—I don't know.

Maurine—Why, if he lifted the other
he'd fall down.

Lady (in a pet store)—I like this dog
but his legs are too short.

Bill Owen (salesman)—Too short!
Why, madam, they all four reach the
floor.

Emma—Have you heard the story go-
ing around about Tony?

Elaine—Heard it? Why, dearie, I
started it.

Trudy—Why do you do so much darn-
ing?

Kay—Runs in the family.

GREETINGS
FROM

O'Melia Mills

Offices
St. Louis, Michigan

Greetings from

PARK HOTEL — and — MAGNETIC MINERAL SPRINGS SANITARIUM

Official Hosts to Alma College Student Gatherings

"College Men"

In selecting your life work we believe you should investigate the opportunity offered by us in the Insurance business. Write to

A. WARREN SAUNDERS

2332 First National Bank Bldg.
Detroit, Michigan

Harriet—I hear Ken Forbes is going to play in an orchestra this summer.
Honor—He should be able to, with that horn.

Gussin—What's the best street in town?

Bret Heartt—Well, you can't go wrong on Wright Avenue.

Amos—Say, did you know that my Dorothea was the most beautiful girl in the country?

Al Knapp—Yes, but she would have been the Belle of the village if someone had tolled her.

Carter (after reading a Special Delivery from Midland)—Oh, Lord, what is this power I have over women!

Capital \$100,000.00

Surplus \$100,000.00

The First State Bank

"The Bank of Personal Service"

LESTER A. SHARP
President

CARL H. WASHBURN
Cashier

Nurse (going off duty)—Is there anything else you wish, sir?

Chief—Yes, kiss me good night.

Nurse—I'll send in an orderly—he does the dirty work.

Perry—Do you ever pray, Dear?

Ann—I pray for you every night.

Perry—How about ten o'clock?

Bill Owen—I never associate with my inferiors, do you?

Chuck G.—I don't know. I never met any of your inferiors.

Church M.—There's a delicious sense of luxury when one lies in bed and rings one's bell for one's valet.

Crew C.—Have you a valet?

Chuck M.—No, but I have a bell.

MARTIN CLOTHES

WHY PAY MORE?

For College Men

We show the largest stock of young men's suits and topcoats in Gratiot county, with new patterns arriving weekly and in the newest mid-west college models at the world's lowest price for quality—\$15.00 and \$18.50.

Stores in Principal Cities

ALMA STORE
Superior and Woodworth

FURNISHINGS — HATS — SHOES
AT LESS COST

Variety—

is the spice of Life—"

Food is a necessity of Life—

A variety of Good Food is the

Order of the day at Mae's.

College Inn

AMERICAN RESTAURANT

Phone 71

122 West Superior

MAE FULCHER, Prop.

We take
PRIDE in
displaying
this EMBLEM



WE are members of the Society of American Florists — an organization formed to assure you of *safety and satisfaction* when buying flowers.

Say it with Flowers

Central Michigan
-- Florists --

FLOWER SHOP—ALMA
 323 Woodworth
 Phone 58

GREENHOUSE—ST. LOUIS
 305 Michigan
 Phone 30-2

Wright House

~
CAFE
 in connection

Try It!

Compliments
 of

SAWKINS
MUSIC
HOUSE

~
 Everything in Music

Suits and Top Coats

\$19.75

— to —

\$39.50

Two Pant Suits

Davy's Clothing Store
 —St. Louis, Michigan

Royer—If you want to go over big, you must sing louder.

Lyman—I'm singing as loud as I can.

Royer—Well man, be enthusiastic! Open your mouth and throw yourself into it.

~
 Prof. Wise—There are six senses.

Ed Karpp—What's the sixth one?

Prof. Wise—The one you lack—common sense.

~
 Angell—You look awfully sleepy, Walter, what's the matter.

Walter—Well, someone told me if I waited in front of Wright Hall I'd hear the college yell, and it didn't say a word all night.

~
 Perry—Will you marry me?

Ann—I'm afraid not.

Perry—Aw, come on, be a support.

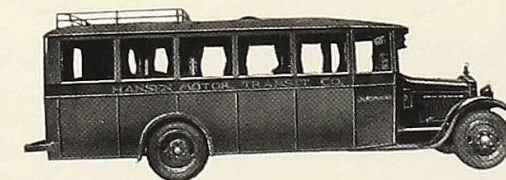
SARTOR
 Printing Company

Printers of

THE ALMANIAN

~
 Phone 137

Across from the City Hall



For Safe, Comfortable and Economical Transportation

~
Hansen Motor Transit Co.

Schedule service between Saginaw, Alma, Edmore, Stanton, Ionia, Greenville, Grand Rapids, Sparta and Muskegon. Special rates for party trips. All lives and property insured.

H. C. HANSEN, Manager

Office 203 West Superior St.

Alma, Michigan—Phone 51

FIRST PRESBYTERIAN CHURCH

"THE COLLEGE CHURCH"

MINISTERS

Rev. Willis L. Gelston, Pastor
Rev. R. O. Moon, Pastor at Eastminster Chapel

—SUNDAY SERVICES—

10:00 A. M.—Sunday School.	6:00 P. M.—High School C. E.
11:00 A. M.—Morning Worship.	6:30 P. M.—College C. E.
3:00 P. M.—Junior C. E.	7:30 P. M.—Evening Worship.

Thursday 8 P. M.—Prayer Meeting

A CORDIAL WELCOME IS EXTENDED TO ALL

The price of Good Bread is satisfaction.

Do you, when buying any article, think of that before the cost price?


We aim to produce the best and are daily being shown that we are doing so.

Try

Butternut Bread

Made by

MODEL BAKERY

 **WIRING SYSTEM**
- for lifetime service

The
Medler Electric Co.

320 Woodworth Avenue
ALMA, MICH.

Motors—Appliances—Fixtures
Kolster Radios—Maytag Washers

Telephone 221


E. C. CRANDELL & SON

Furniture

Rugs, Carpets, Linoleums, Trunks, Bags
Pictures and Picture Framing

ALMA, MICHIGAN

Morticians

 **PRINTING**

Inspect this book as to the quality
of our printing.

Consult any of our customers as to
the service we give.

It is a rare thing that an order is
not ready at the time we say we
will have it ready.

The Babcock Publications

PRINTERS — PUBLISHERS

Smart Styles—

make your clothes attractive to others.

Quality—

at saving prices make them attractive to you.

J. C. Penney Co.

317-323 State Street—Alma

Dean Mitchell—How many times have I told you to come to class?

Budd—I don't know. I thought you were keeping score.

Then there was the Scotchman who would only let his boy have one measle at a time.

Goldy—I'll give you a hundred dollars to do my worrying for me.

Dean—All right. Where's the hundred?

Goldy—That's your first worry.

Villa—Where are we going to eat?

Si—Let's eat up the street.

Villa—Aw, no; I don't like asphalt.

Buffalo—There's just one habit I'd like to break you of.

Bob Budd—What's that?

Buffalo—Breathing.

Compliments of

THE WOLVERINE DAIRY COMPANY

We Manufacture WOLVERINE BUTTER

Phone 196

703 Michigan Ave.

"Jahn & Ollier Again"

We are America's largest school annual designers and engravers because we render satisfaction on more than 400 books each year. Intelligent co-operation, highest quality workmanship and on-time deliveries created our reputation for dependability.

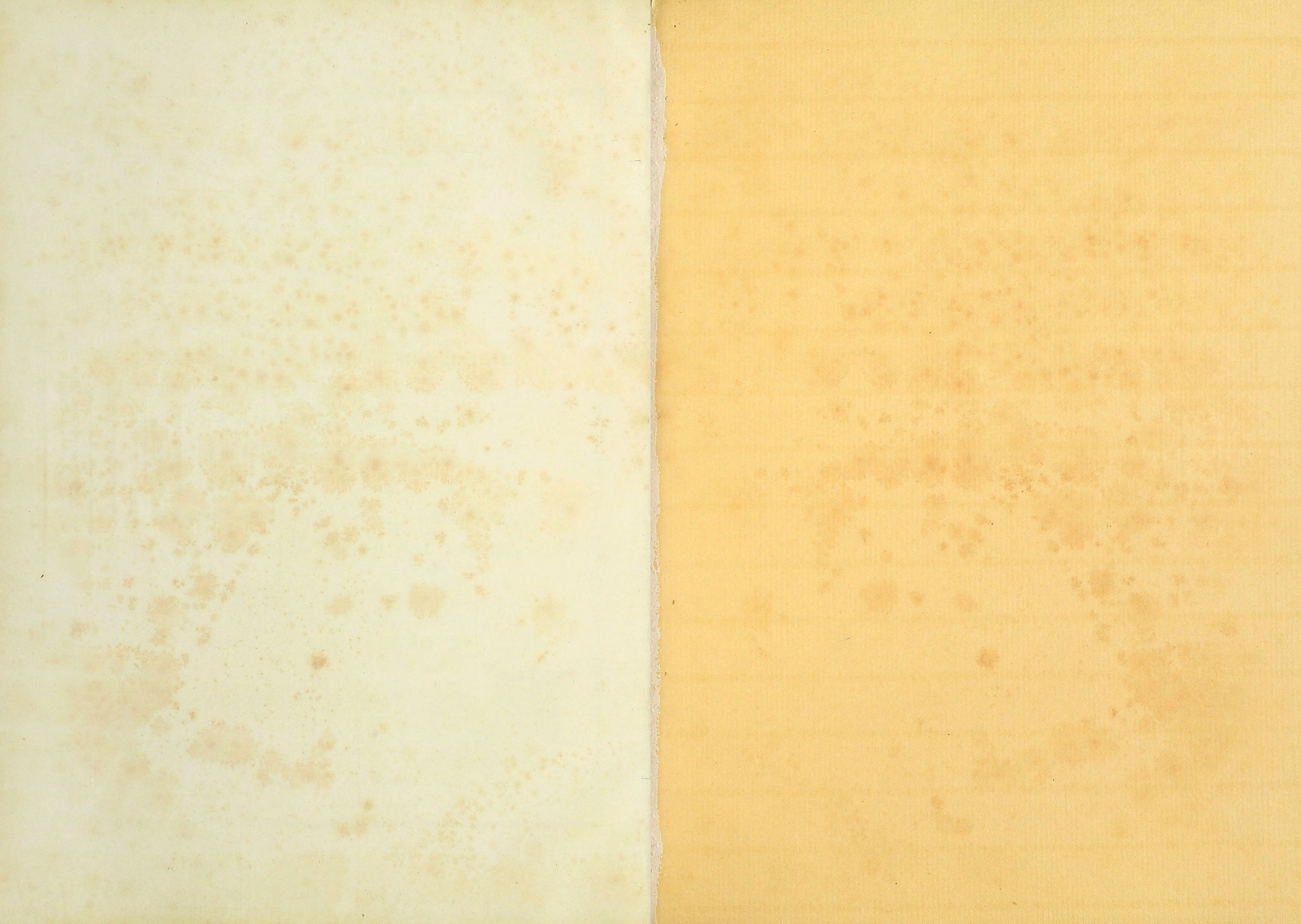
JAHN & OLLIER ENGRAVING CO.

Photographers, Artists and Makers of Fine Printing Plates for Black or Colors.

817 W. Washington Boulevard • Chicago

Telephone MONROE 7080

We do not sub-let any art or engraving



ALMA COLLEGE LIBRARY



3 3190 00416 4828

