

# Maroon and Cream

1931

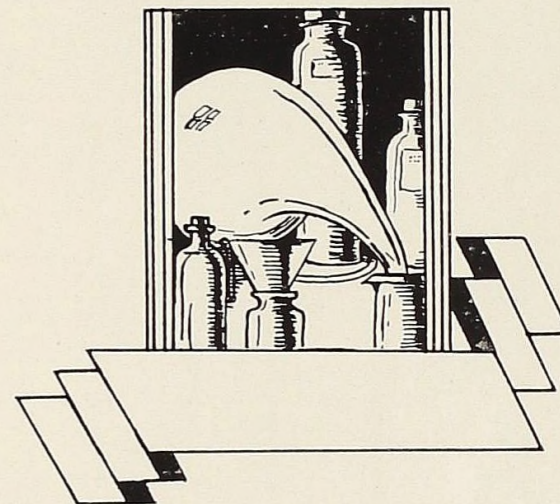
Closed  
Section  
LD  
131  
.A612  
1931

L. Olmstead

Personal  
copy

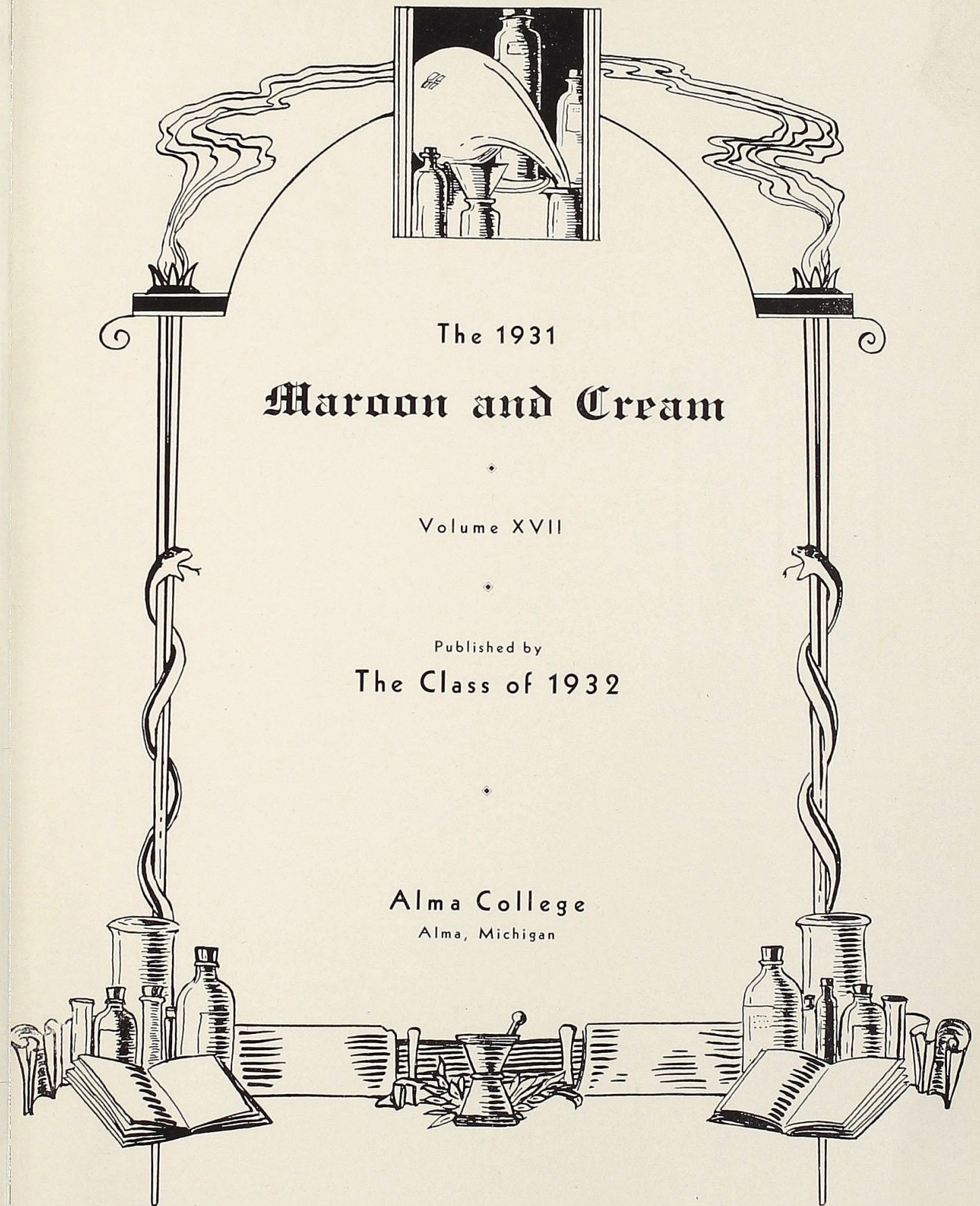
Leslie Olmstead

EX LIBRIS



Editor-in-Chief  
C. DOUGLAS McLELLAN, '32  
Calumet, Michigan

Business Manager  
CLARK B. JAMIESON, '32  
Wayne, Michigan

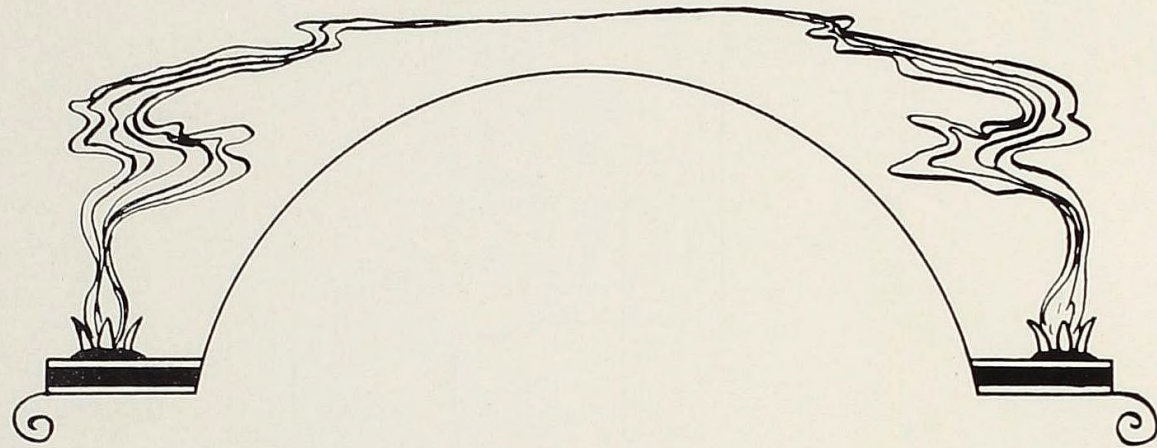


The 1931  
**Maroon and Cream**

Volume XVII

Published by  
**The Class of 1932**

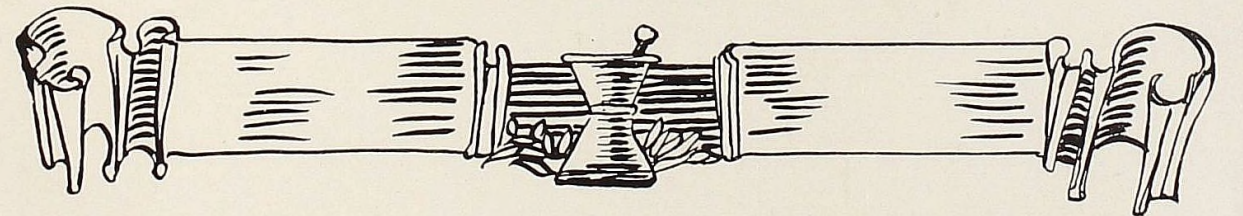
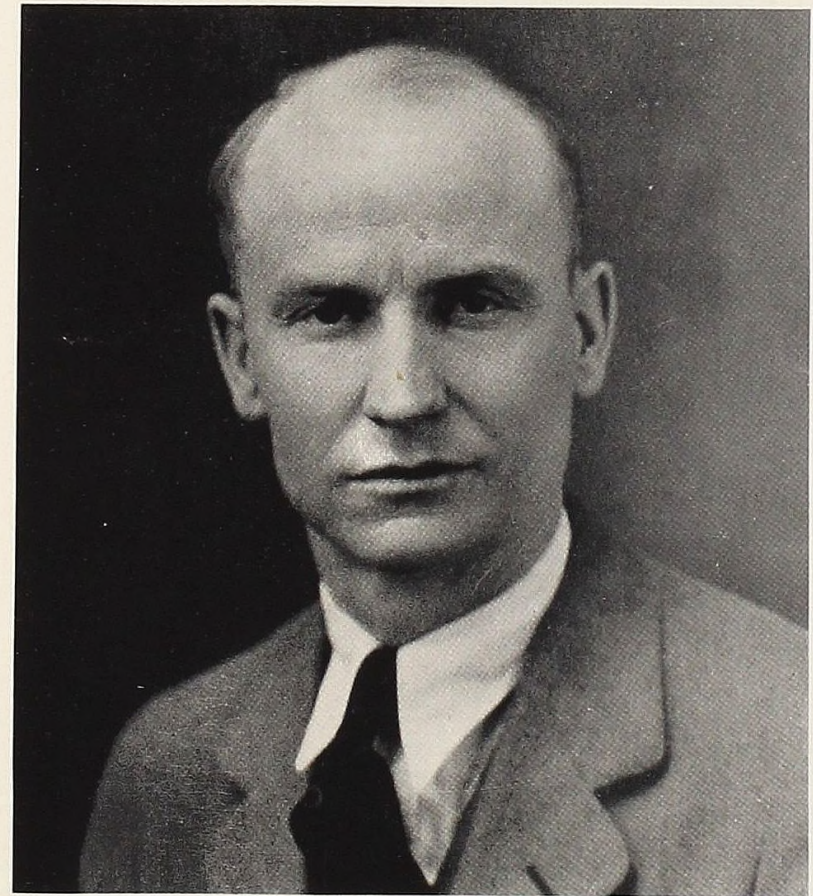
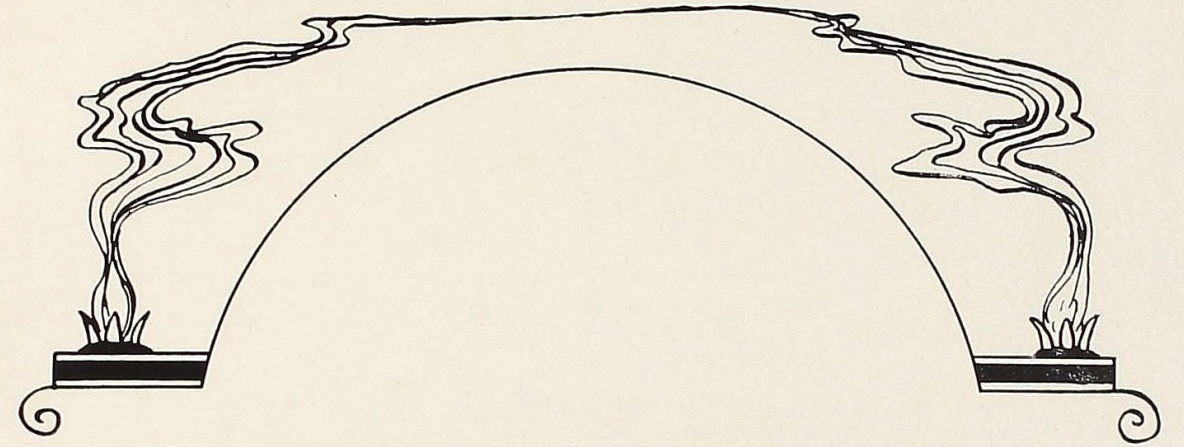
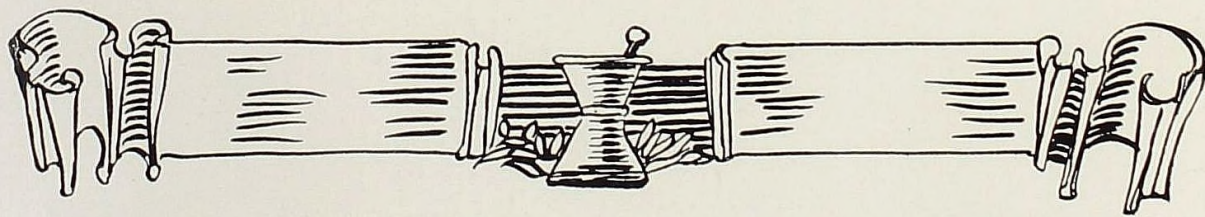
**Alma College**  
Alma, Michigan



—TO—

**Dr. Wilford E. Kaufmann,**

A patient, helpful teacher, a thorough student, a modest gentleman, a true friend, a devoted husband, a kind father, we, the Class of 1932, dedicate with affection and appreciation, the Maroon and Cream.



# FOREWORD

---

---

THEMATIC plans for annuals have been used to express the high spots of most every phase of life. In the hope that it is a departure from the hackneyed themes of other books and other years, the Maroon and Cream has woven in the salient events of the history of Chemistry. Our division pages bring to you the outstanding events in that fascinating story of chemical development.

We have chosen this theme because this book is dedicated to Alma's beloved chemist and because the world has come to the realization of the vital place which the science of chemistry holds in life. Berthelot has said truly,

La Chimie possède cette faculté créatrice, à un degré plus éminent que les autres sciences, parce qu'elle pénètre plus profondément et atteint jusqu'aux éléments naturels des êtres.

## Contents

- OUR COLLEGE
- OUR ATHLETICS
- OUR ACTIVITIES
- OUR SOCIETIES

## Maroon and Cream Handicaps

FOLLOWING the conventional practice of editors of writing on this page and acknowledging the debts of those unnecessary souls who could not be prevented from helping in the composition of this annual, I bow to convention.

Chief liability and burden to the editor were Miss Mary Elizabeth Forshar and Harry Means Crooks, Jr., who contributed many write-ups and unnecessary advice on the rest of the book. Miss Sheila Littleton and Leslie Struble attempted the art section and after many threats on the part of the editor, completed the task—result questionable. You cannot imagine a yearbook without a kodak section; hence Miss Charlotte Dakin and Earle Lyman made their doubtful contributions. The athletic review was portrayed by Arthur Crawford, who was handicapped by having to write, not sing. Two additional handicaps were the Tradition Editor, Miss Dorthea Prouty, and Edward Gould, the Campus Editor. Norene Helberg offered her questionable contribution of the calendar. The dry humor was forced on you through the efforts of one Howard Potter.

In a Financial way Mr. Clark Jamieson managed the annual to the extent of a dozen new ties and three new tires for his car, and will also probably manage the annual into a hole. He was ably assisted in this by Jack Cook.

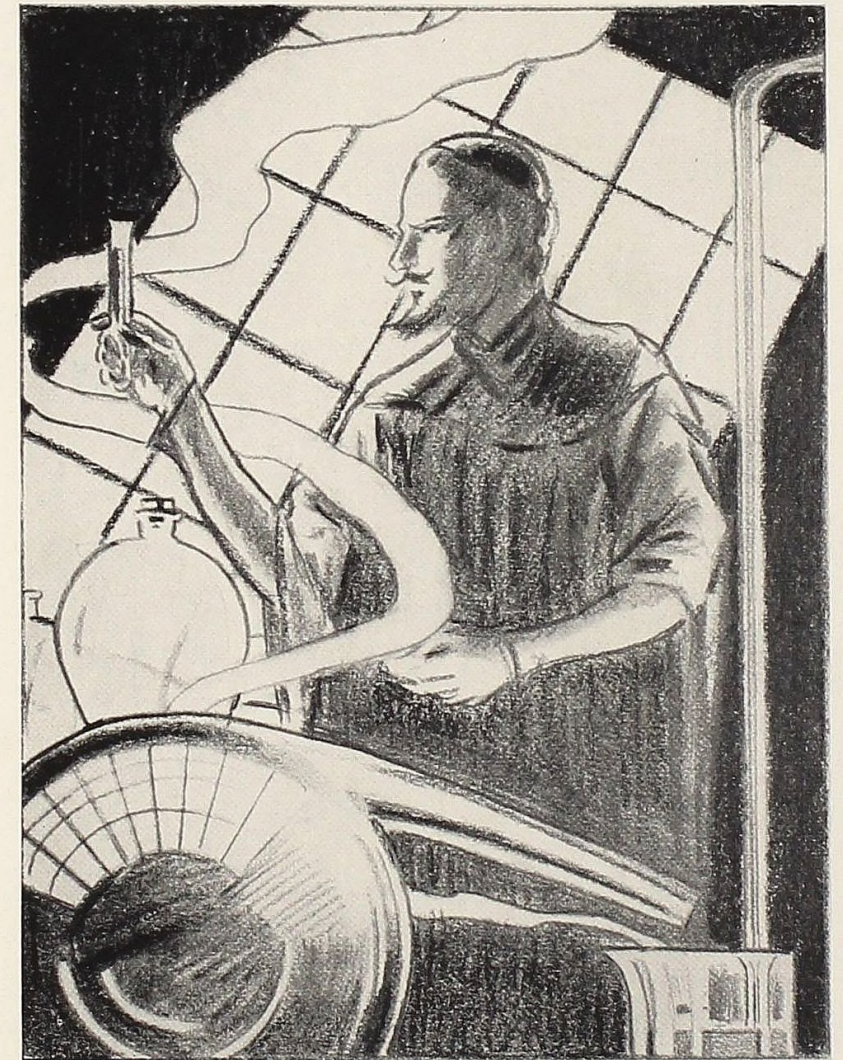
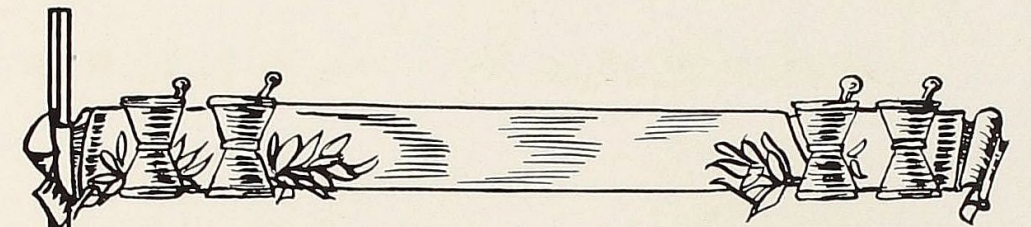
Charge the many errors in the copy to Miss Margaret Joiner, and lastly, blame the small number of annuals sold to the Junior class who assisted in the sales campaigns.

We further acknowledge being bothered by two Sophomores, Miss Onilee MacDonald and Miss Catherine McCuaig, who forced their way in by insisting that they be allowed to cut out the pictures that appear herein.

Hence one can see after a perusal of the above that it is remarkable indeed that the Maroon and Cream was published, especially when one remembers the chief burden and handicap of the book,—the writer of this.

Shall I get soft—well—thanks to all who have helped in the work, especially those mentioned above, and lastly, thank goodness—the work is over.

C. DOUGLAS McLELLAN.



## OUR COLLEGE

*The Old Alchemist seeking the "philosopher's stone" which should transform all baser metals into gold, cure all disease, and restore youth, 1430.*



## Our College

**T**HIRTY-EIGHT acres, some of which are virgin woodland, comprise the campus of Alma College, the smallest and most select college in Michigan. From the early days when Alma was named "The Yale of the West," this Presbyterian school has succeeded in building a wealth of fine traditions that endear it to the heart of every student.

Alma is located in the town of Alma, nearly in the exact center of Michigan's Lower Peninsula, and has an annual enrollment of three hundred men and women.

Although it is Michigan's smallest college, Alma has the finest record of any small college in the state. In scholastic attainment she has no equal. In forensic activities and oratory, she leads the field. In athletic competition with the schools of the Michigan Intercollegiate Athletic Association Alma has a record of having more championships to her credit than any other school. Her band and glee clubs have won renown throughout the state during their concert tours.

Back of these successes is a faculty of twenty-five members representing seventeen American universities and four foreign institutions of learning, who have given many fruitful years of their life to the task of putting Alma in the van of Michigan colleges.

The real spirit of Alma lives in the "College Chant" which her students love:

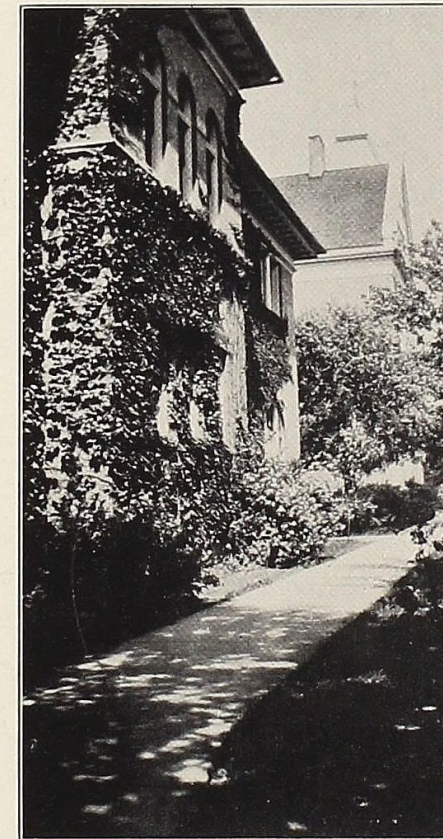
Loyal hearts will cherish ever  
Thoughts of thee throughout the years,  
Pledging thee a fond devotion,  
Guardian of our hopes and fears.

Memory holds a cherished picture,  
Jungle, grove and campus fair,  
Sons and daughters ever faithful  
Hail thee, one beyond compare.

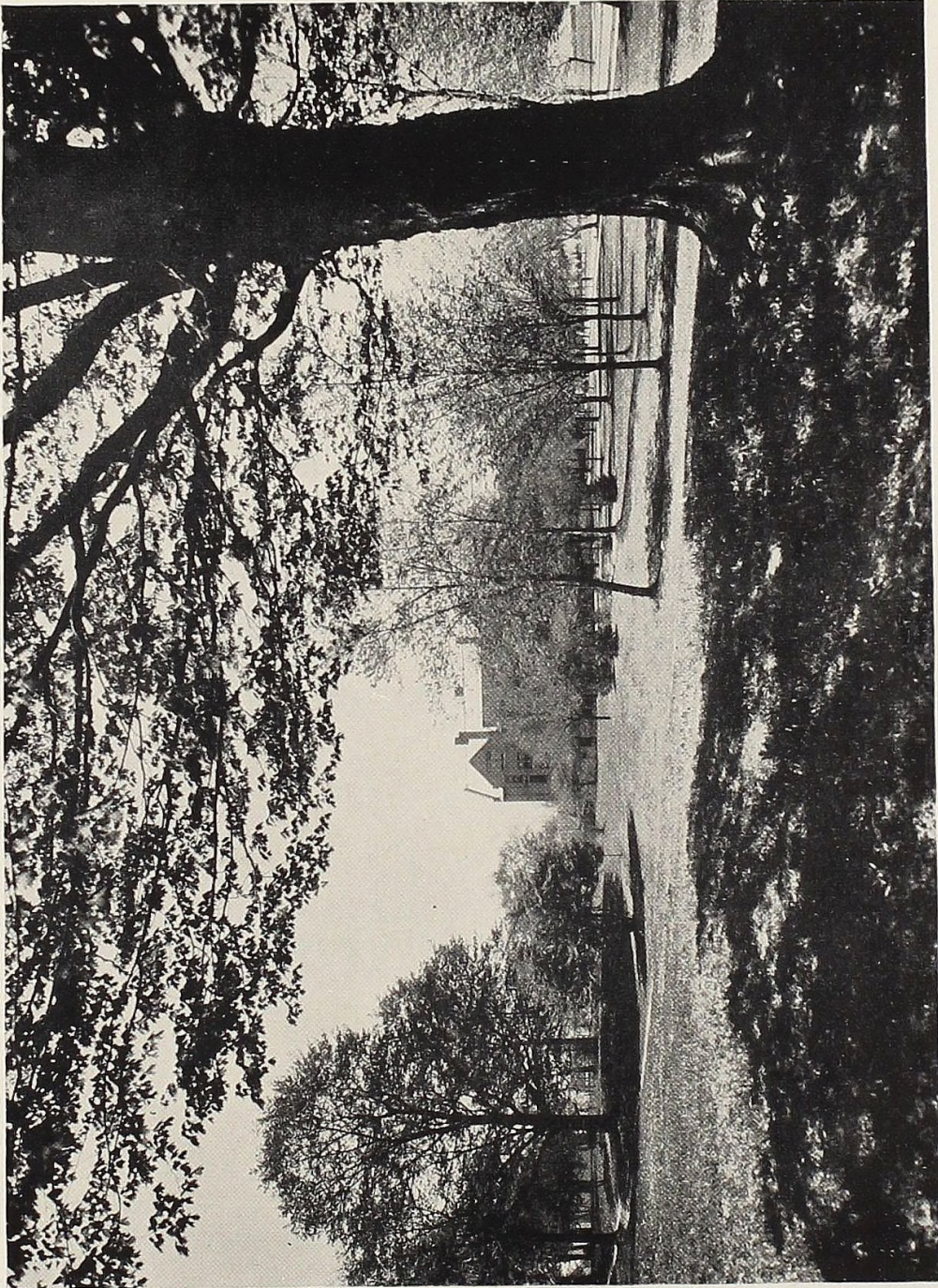
Alma, Alma, Sing of Alma Mater,  
Thy loyal children chant thy hymn of praise.

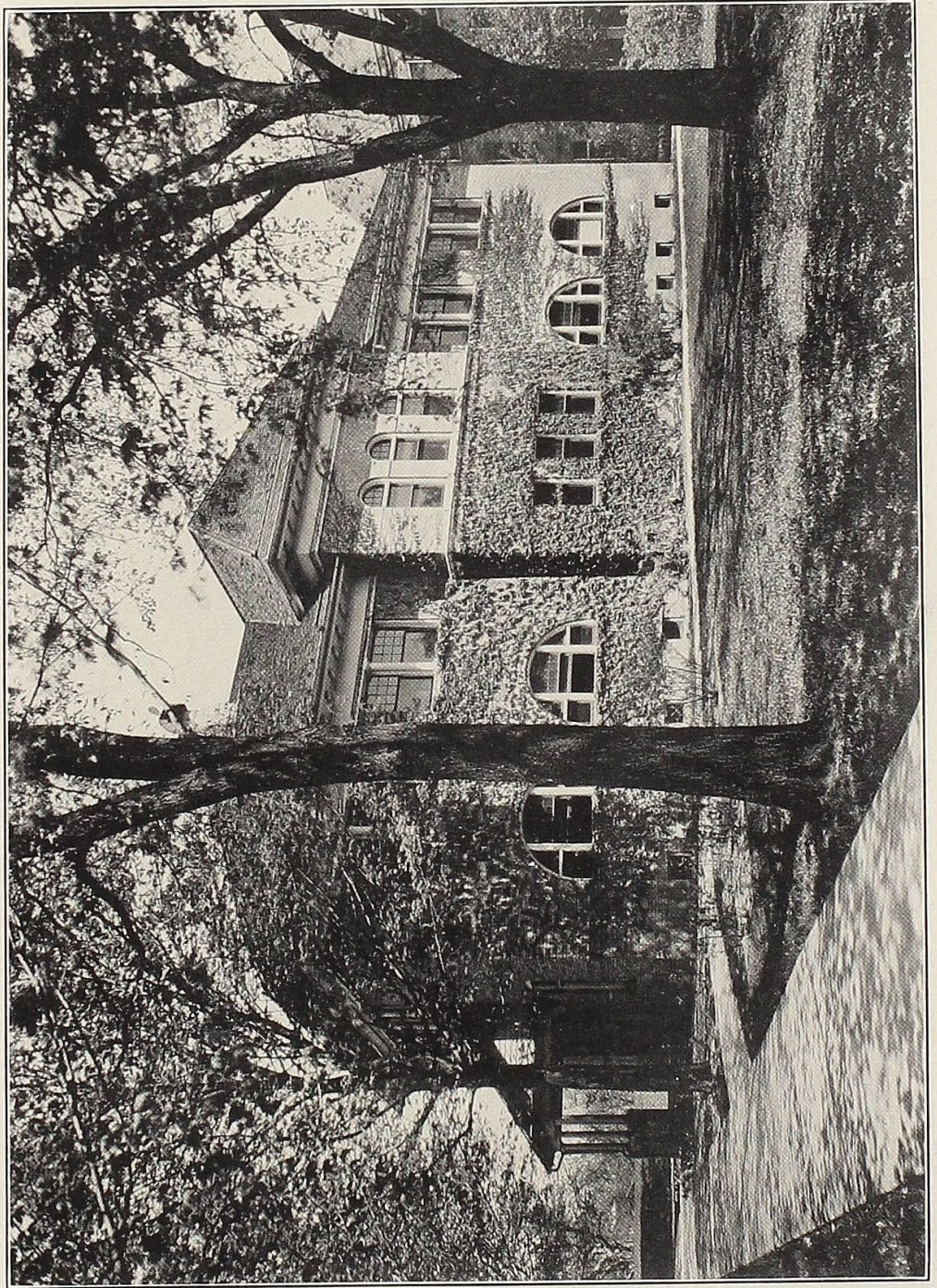
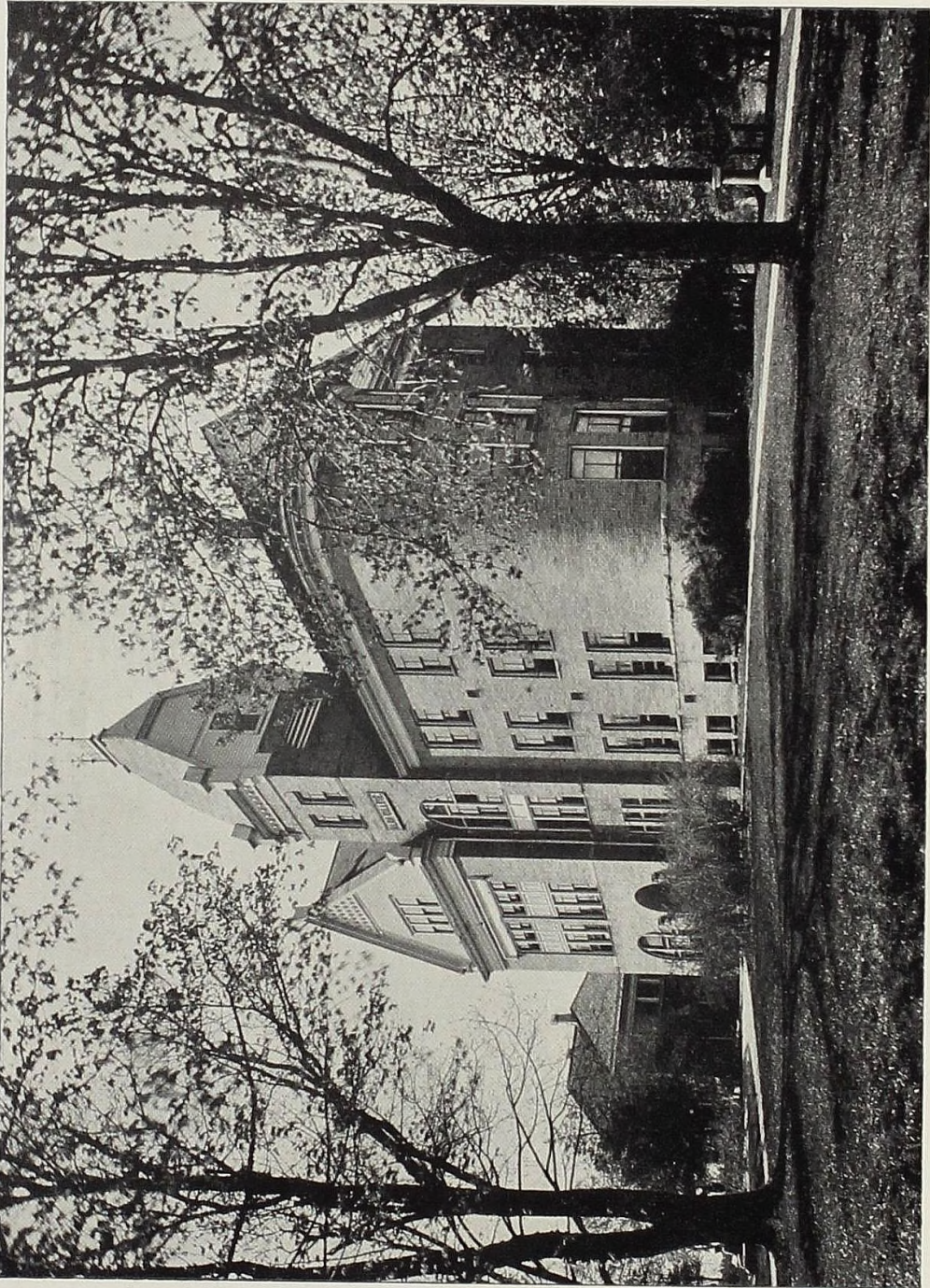


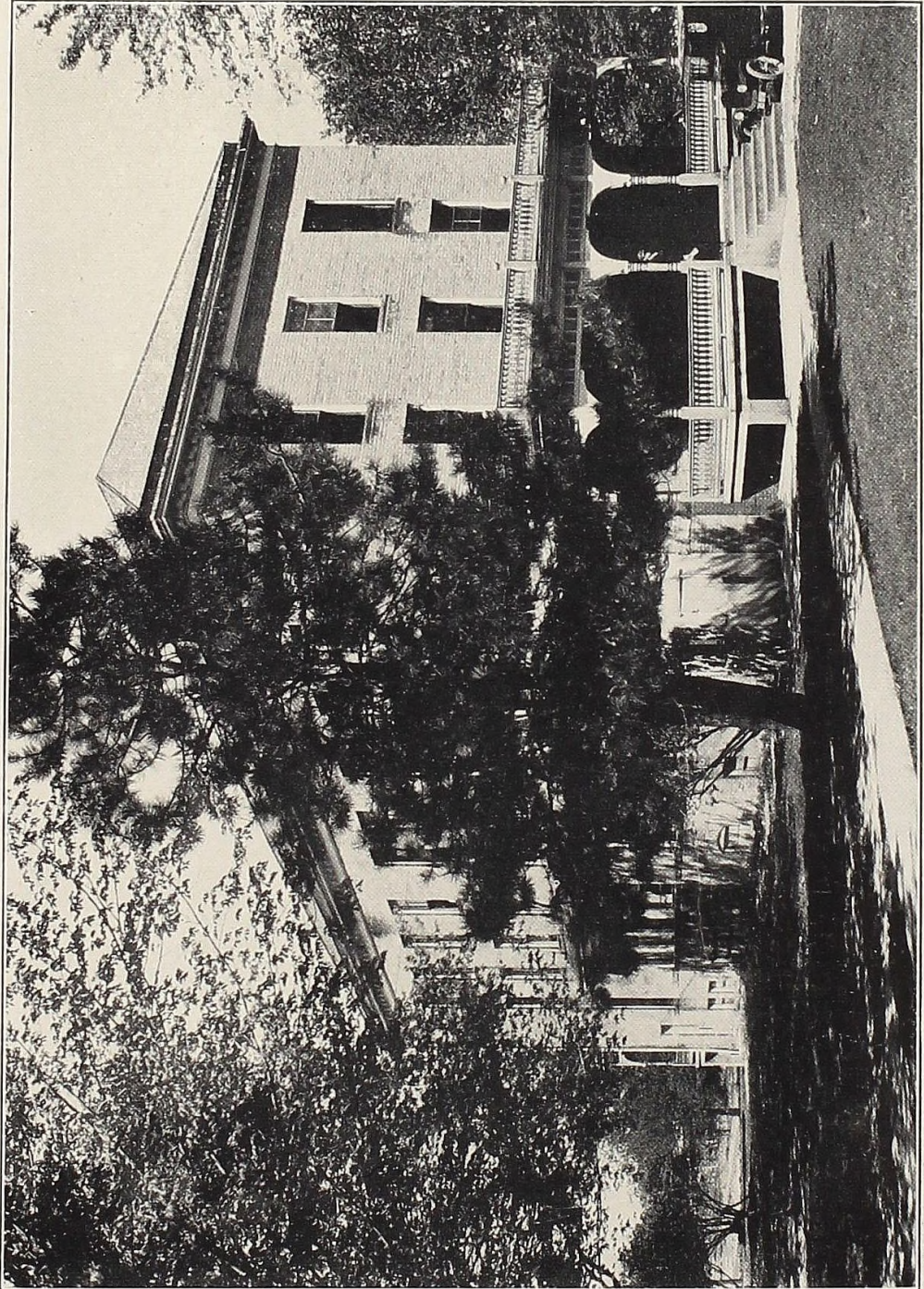
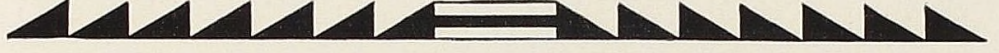
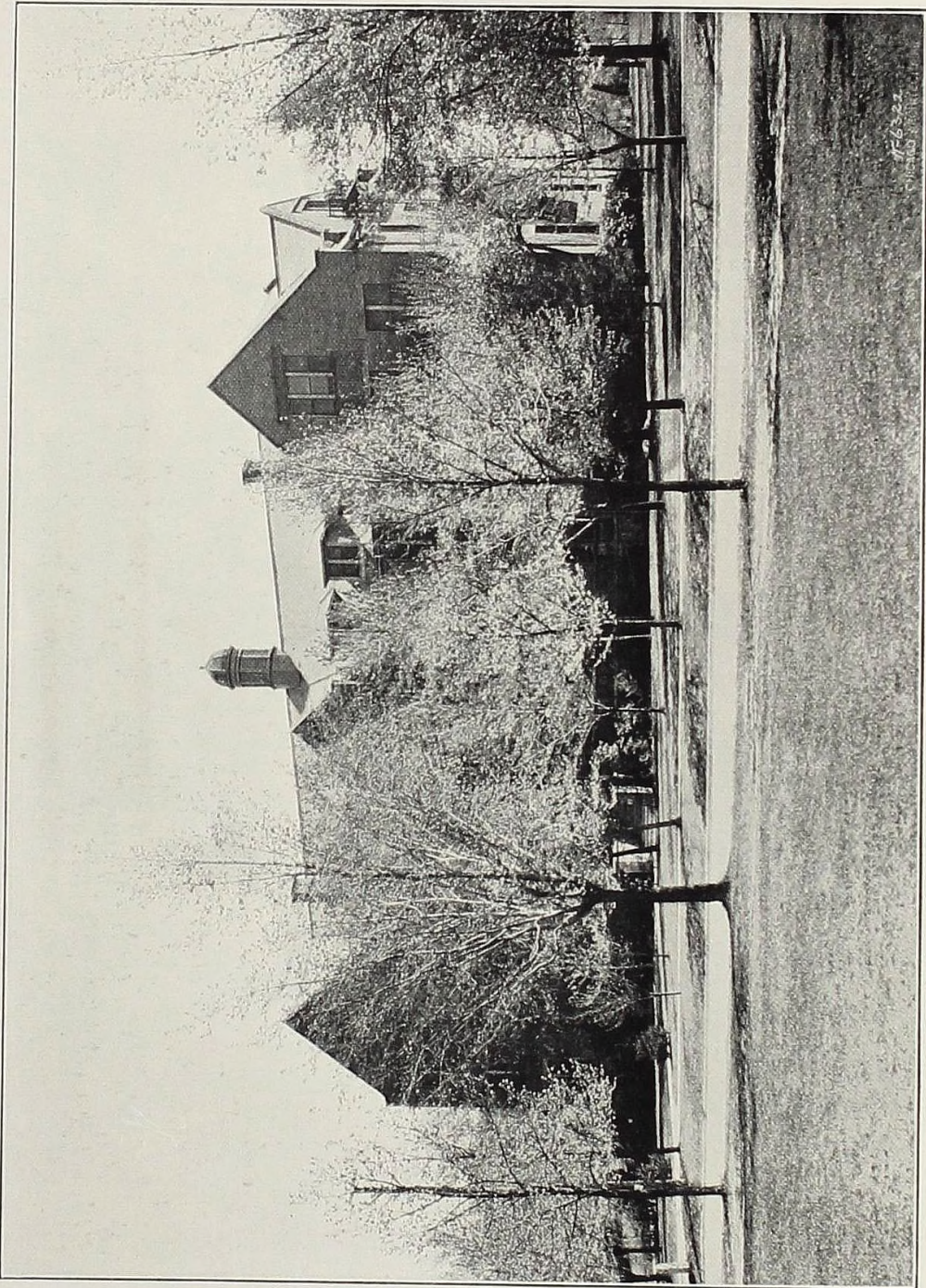
## OUR CAMPUS

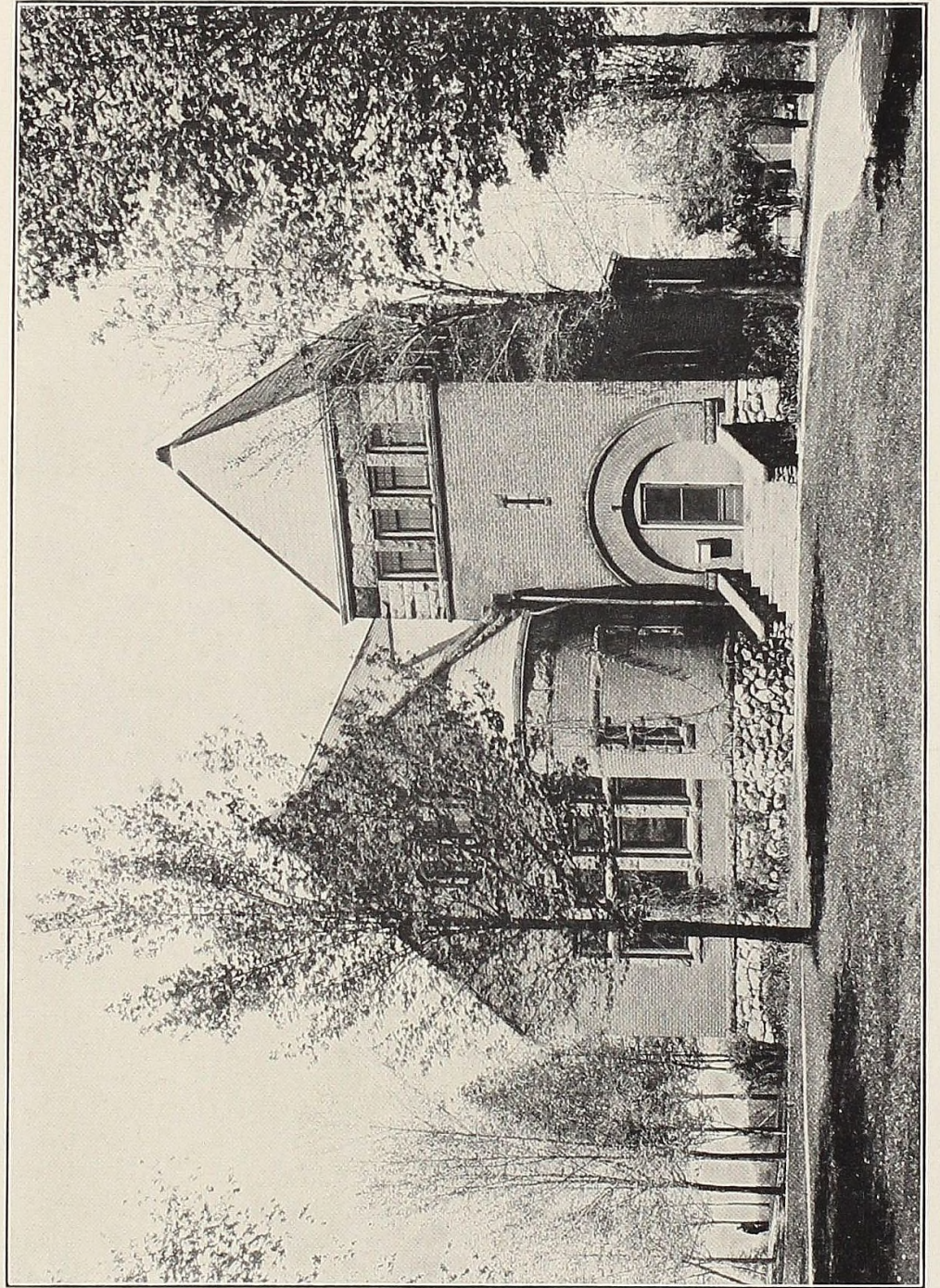
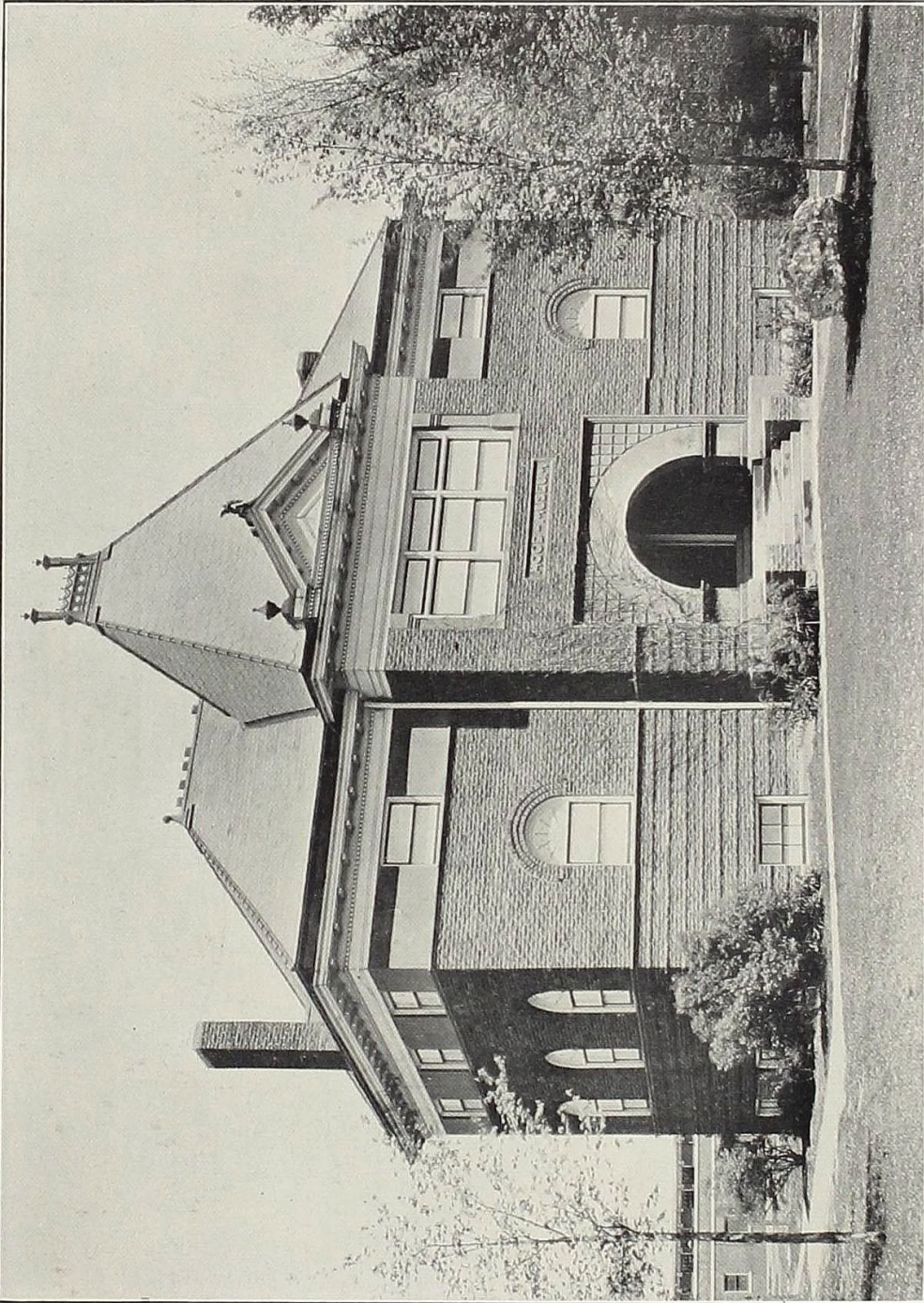


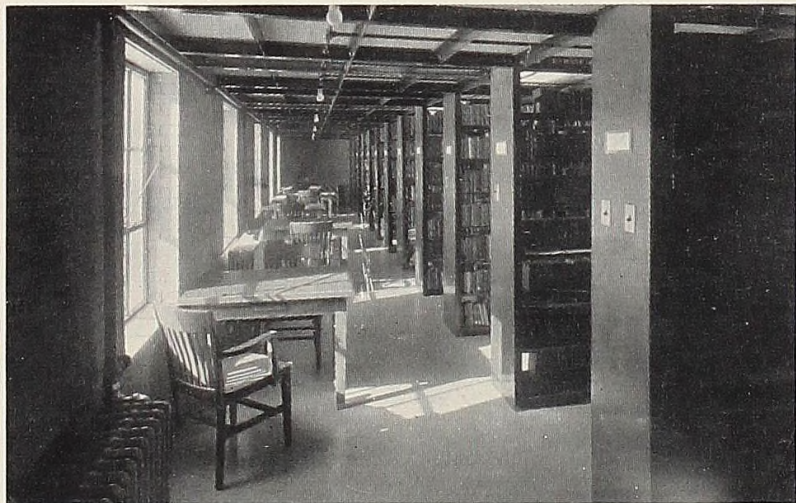
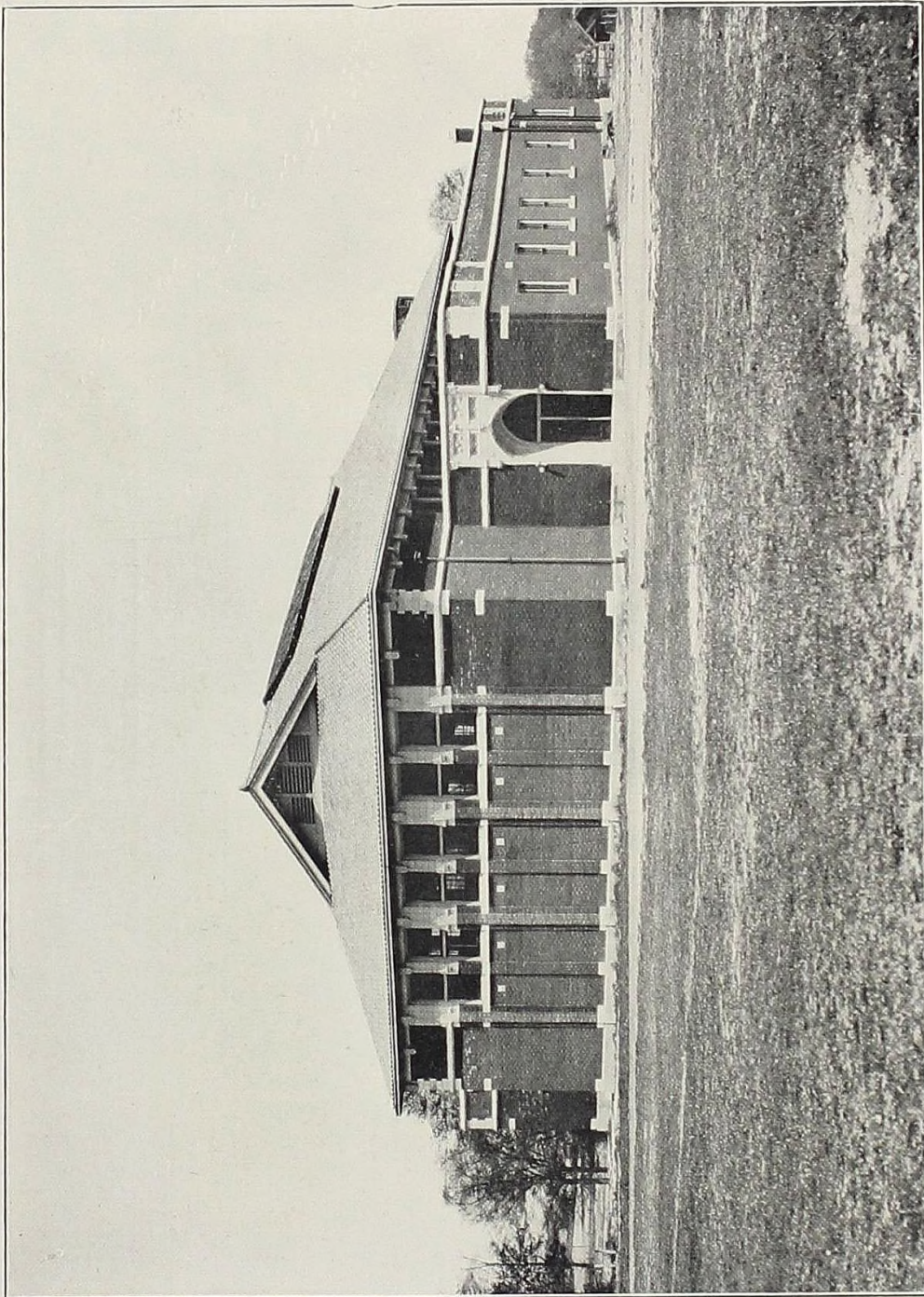


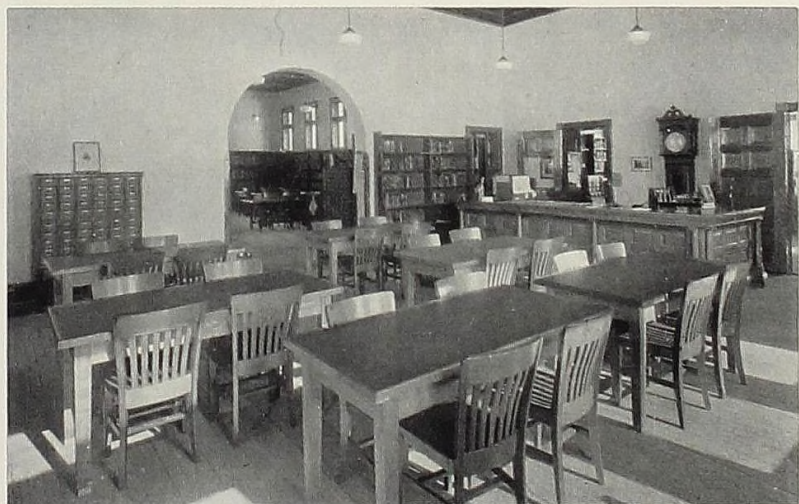


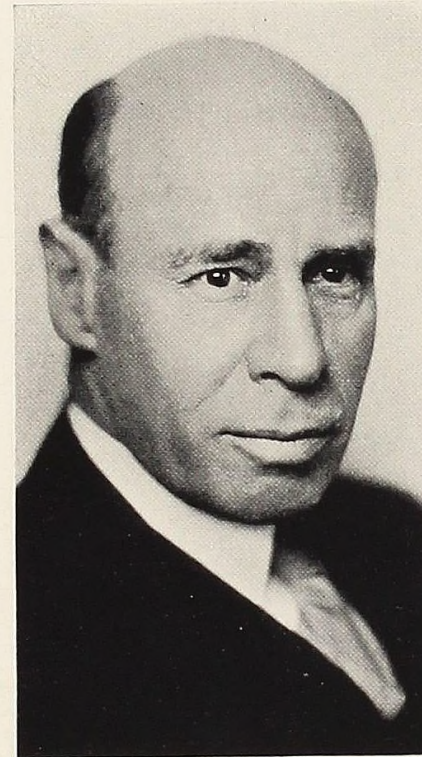




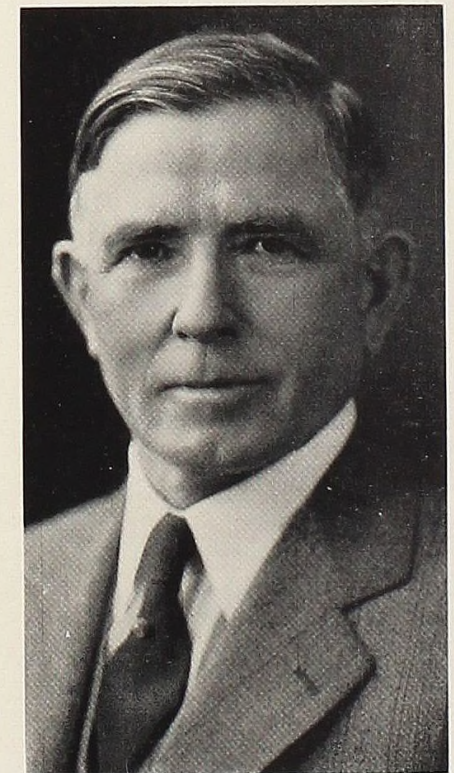




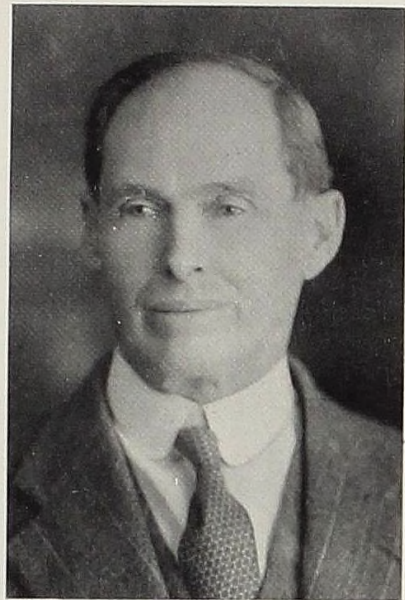




Harry Means Crooks, A.B., LL.D.  
(Wooster)  
President of Alma College



James E. Mitchell, A.M. (Columbia), LL.D. (Alma)  
Professor of History and Political Science, Dean of the Faculty



Hansford M. MacCurdy, Ph.D.  
(Harvard)  
Professor of Biology and Geology



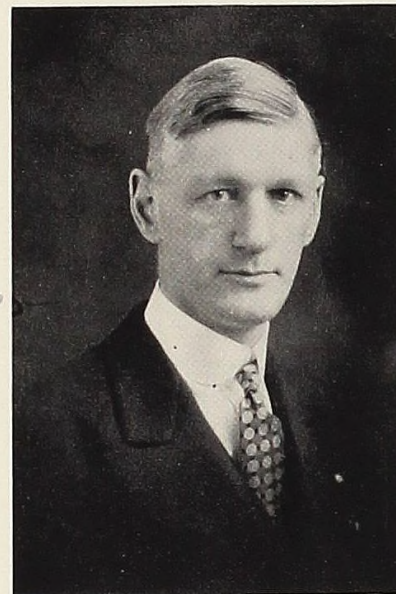
Grace D. Roberts  
Professor of Piano and Pipe Organ



George B. Randels, Ph.D. (Pennsylvania)  
Professor of Philosophy



Charles D. Brokenshire, A.M.  
(Marietta), B.D. (Princeton)  
Professor of Biblical Literature and  
Religious Education



Roy W. Hamilton, A.M. (Michigan)  
Professor of English Language and  
Literature, Secretary of the Faculty



Annette Persis Ward, A.M. (Michigan)  
Librarian and Professor of Library  
Methods



Raymond C. Ditto, A.M. (Princeton)  
Professor of Physics

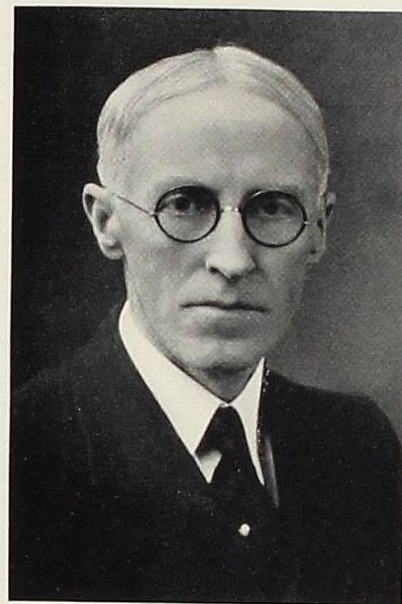


Robert W. Clack, A.M. (Grinnell)  
Professor of Mathematics and Astronomy





Jesse W. Ewer  
Professor of Vocal Music



Herman W. Spencer, A.M. (Westminster)  
Professor of Rhetoric and Journalism



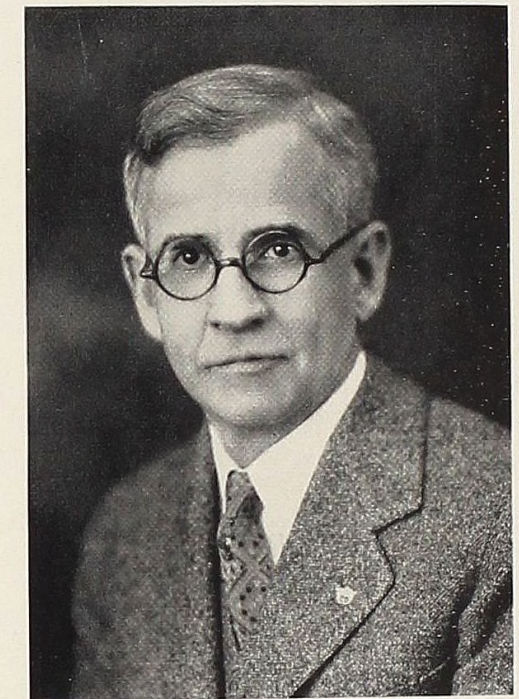
Rockwell C. Journey, A.M. (Missouri)  
Professor of Economics



Wilford E. Kaufmann, Ph.D. (Illinois)  
Professor of Chemistry



Margaret E. Foley, A.M. (Illinois)  
Assistant Professor of French



Leon L. Tyler, LL.B., A.M. (Michigan)  
Professor of Education



George C. Wise, A.M. (Iowa)  
Professor of German and Spanish



Florence M. Steward, A.M. (Radcliffe)  
Assistant Professor of English and  
Dean of Women

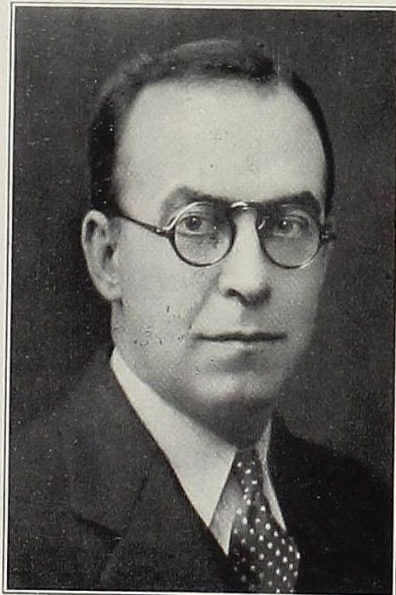




Josephine Banta, A.M. (Chicago)  
Assistant Professor of Latin and Greek



Royal R. Campbell, A.B. (Alma)  
Director of Physical Education



Chester R. Robinson, A.B. (Alma)  
Instructor in Accounting



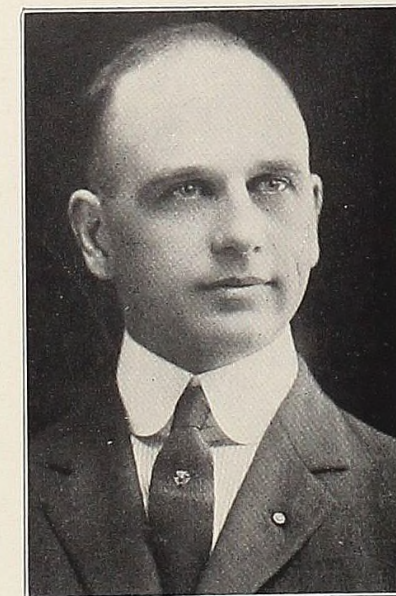
Rita M. Biondi, M.S. (Northwestern)  
Instructor in Biology, Director of  
Physical Education for Women and  
Assistant Dean of Women



Helen A. Wolter, A.B. (Michigan)  
Assistant Librarian



Anna M. Angell, B. Sc. (Michigan  
State)  
Assistant Librarian



H. C. Abernethy  
Special Representative of the Board  
of Trustees



A. Euarda McCray, B.S.  
Secretary to the President



Our  
Seniors





**Baldwin, Louis S.—"Baldie"** Mancelona, Mich.  
*"He sleeps noiselessly and can rally to recite at times."*  
 PHI PHI ALPHA  
 Southern College (Florida) 1; Football 1, 2, 3;  
 Basketball 1, 2; Phi Phi Alpha—Secretary—4.

**Bates, Charles W.—"Charlie"** Brooklyn, N. Y.  
*"Not another like him in the world—nice old world."*  
 BETA TAU EPSILON  
 Beta Tau Epsilon—President 4; Spencer Essay Prize 3.

**Block, Maryema—"Mary"** Alma, Mich.  
*"A nice girl, but who wants to be nice?"*

**Boutin, Horace—"Pete"** Merrill, Mich.  
*"To him a girl in the back seat is worth two in the front."*  
 ZETA SIGMA  
 Basketball 1, 2, 3; Football 2; Band 1, 2, 3;  
 Glee Club 1, 2, 3.

**Bowker, Hazel I.** Alexander, N. Y.  
*"It pays to be good—not much, but it pays."*  
 TAU SIGMA GAMMA  
 Tau Sigma Gamma—Vice-President 3; Education Club 3, 4.

**Bradley, Norman—"Norm"** Alma, Mich.  
*"He sweeps in the day and sleeps at night."*

**Carter, C. Clyde** Springfield, Ohio  
*"Love 'em all, propose to few, and marry none."*  
 Student Council 4; Marshall 4; Zeta Sigma, Vice-President 4; President 4.

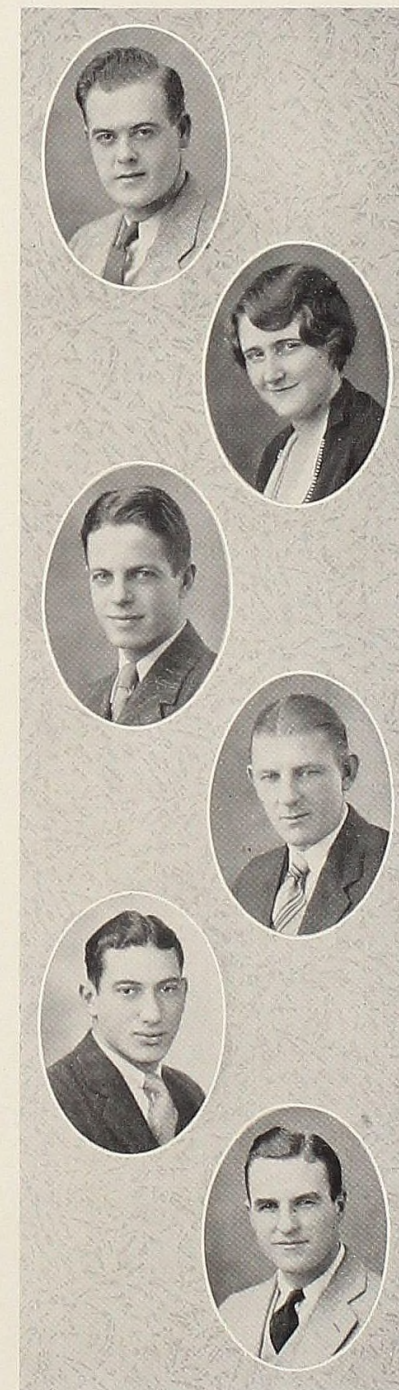
**Carter, Dorothy J.—"Dot"** Traverse City, Mich.  
*"Men may come and men may go, but I go on forever."*  
 ALPHA THETA  
 Senate 3, 4; President 4; Alpha Theta—President 4; Y. W. C. A. Cabinet, Secretary 2, Treasurer 3; Student Council 3, 4; Glee Club 1, 2, 3, 4, Assistant Manager 3, Manager 4; Inter-Society Council 4.

**Dean, Alan—"Al"** McBride, Mich.  
*"Wants to be both Daniel in the Lion's den and the leading lion."*  
 ZETA SIGMA  
 Basketball 1, 2, 3, 4; Baseball 2, 3; Glee Club 2, 3, 4; Drama Club 1, 2; Class President 3, 4; Student Council, Treasurer 3, President 4; Zeta Sigma—Secretary 2, Treasurer 4; International Relations Club 4; Athletic Board of Control 3, 4, President 4; Phi Sigma Pi 3, 4.

**Erickson, Clifford—"Red"** Newberry, Mich.  
*"So far Cupid and the girls are out of luck."*

**Gussin, Carl—"Mooie"** Detroit, Mich.  
*"Fast? Ask the Coach and the girls."*  
 Football 1, 2, 3, 4; Basketball 1, 2, 3, 4; Baseball 1, 2, 3, 4.

**Gustin, James William—"Jim"** Bay City, Mich.  
 ZETA SIGMA  
*"An optimist—jumps at the pop of every cork."*  
 Golf Team 3, 4; Zeta Sigma—Vice-President 4.





Harris, Leslie P.—"Les" Detroit, Mich.

*"The kind of a boy your mother would want you to know."*

BETA TAU EPSILON

Phi Sigma Pi 3, 4, Secretary 4; Inter-fraternity Council 2, 3, 4, President 4; Beta Tau Epsilon—Vice-President 3, President 4; Basketball 1; Track 1; Baseball 1; Drama Club 1; Class Treasurer 2; Business Manager of Almanian 4; Spencer Essay Prize 3; Esperanto Club 3; College C. E., Vice-President, Treasurer 3.

Heberlein, Paul K.—"Hebe" Royal Oak, Mich.

*"Napoleon was a little man, too."*

Phi Sigma Pi 3, 4; Vice-President 4; Silliman Scholar 2; Greek Prize 3; Quartette 2, 3, 4, Director 2, 3, 4; Inter-fraternity Council 3, 4, Vice-President 4; Associate Editor, Almanian 4; Esperanto Club 3; Y. M. C. A. 3, 4; Christian Endeavor 1, 2, 3, 4; Gospel Team 1, 2, 3, Chairman 3.

Henricks, Neva M.—"Nev" Ithaca, Mich.

*"A nice girl, but she's getting tired of being told that."*

TAU SIGMA GAMMA

Class Secretary 4; Senate 3, 4; Vigilance Committee 2; Y. W. C. A. 1, 2, 3, 4; French Club 2, 3, 4, Vice-President 3; Education Club 3, 4.

Hosford, Buford M.—"Boof" Hosford, Fla.

*"He's not saving for a rainy day—it's for a wet night."*

PHI PHI ALPHA

University of Florida 1, 2; Masqueraders 1, 2; Ballet Director 2; Theta Ribbon Society 1, 2; Kappa Sigma (Delta Delta Chapter) 1, 2; Lyceum Council 2; Drama Club 4; Athletic Board of Control 4.

Hurst, Elizabeth—"Betty" Alma, Mich.

*"Old fashioned, but never admits it."*

ALPHA THETA

Alpha Theta, Treasurer 3, Vice-President 4, President 4.

Joyce, Archie K.—"Archie" Saginaw, Mich.

*"He's such a prince—we want to crown him ourselves."*

PHI PHI ALPHA

Education Club 3, 4.

Klerekoper, Fred—"Freddie" Clifton, N. J.

*"I may not be handsome, but I'm darned good looking."*

PHI PHI ALPHA

Basketball 1; Cross Country 1, 2; Track 1, 2; Phi Phi Alpha, Treasurer 2, Vice-President 3; President 4; Band 1, 2; Student Council 4, Almanian Staff 4; Inter-fraternity Council 4.

Lau, Flora—"Flora" Alma, Mich.

*"Just too sweet for this wicked world."*

PHILOMATHEAN

Philomathean, Secretary 2, Vice-President 3, President 4; College C. E., President 2, Secretary 3.

Leyrer, Lillian M.—"Lil" Lansing, Mich.

*"A rara avis—a Latin major."*

PHILOMATHEAN

Philomathean, Secretary 2, President 4; Tau Sigma Gamma, Treasurer 4; Almanian Staff—Circulation Manager 4.

Ling, Ernestine—"Ernie" Hemlock, Mich.

*"She shows her wisdom by keeping silent."*

ALPHA THETA

Alpha Theta, Secretary 2, 3, Vice-President 3; Y. W. C. A. Cabinet 2, Secretary 3, President 4; Class Vice-President 3; Senate Secretary 4; International Relations 3, 4.

McGarity, Orleta Alma, Mich.

*"She has a Sphinx-like serenity."*

Mileski, Ann—"Ann" Iron River, Mich.

*"She thinks that two part harmony means a necking party."*

KAPPA IOTA

Vice-President of Class 4, Secretary 3; Drama Club, Vice-President 4, Chairman of Membership Committee 4, Secretary 2; Glee Club 1, 2, 3, 4; Secretary 4; Kappa Iota, Secretary 2.





Miller, Charles Edwin—"Chuck" Detroit, Mich.  
*"Fond of the ladies."*  
 PHI PHI ALPHA  
 Class President 2; Student Council 2; Phi  
 Phi Alpha, President 4.

Noyle, Dorothy—"Dot" Flint, Mich.  
*"Never quite happy unless miserable  
 about something."*  
 Phi Sigma Pi; Brownell Scholarship 2; Stu-  
 dent Council, Secretary 4; International Rela-  
 tions Club 4; Education Club 3, 4; Tau Sigma  
 Gamma 2, 3; Y. W. C. A.

Odle, Keith B.—"Shorty" Flint, Mich.  
*"He might not walk a mile, but he could  
 run it with no trouble."*  
 PHI PHI ALPHA  
 Track 2, 3; Football 1, 2, 3; Phi Phi Alpha,  
 Marshall 3, President 4; Education Club 3, 4.

Ollis, Kenneth F.—"Ken" Buffalo, Wyo.  
*"'Tis better to smoke here than here-  
 after."*  
 BETA TAU EPSILON  
 Drury College (Springfield, Missouri) 1, 2;  
 Delta Gamma Chi 2; Gavel Club 1, 2; Sou-  
 wester, Business Manager 2; Cosmopolitan  
 Club 1, 2; Oratory and Debate 1, 2; First  
 Place, College Oratorical Contest 3, 4; Man-  
 ager, Oratory and Debate 4; Michigan Ora-  
 torical League, President 4; Alpha Rho  
 Gamma; Debate 3, 4, Captain 4; College Ora-  
 tor 3, 4; First Place in Semi-finals of State  
 Oratory 4.

Owen, Janet Millar—"Jan" Escanaba, Mich.  
*"She used to be a bookworm—but how  
 that worm has turned!"*  
 KAPPA IOTA  
 Glee Club 2, 3; Kappa Iota, Treasurer 2;  
 Upper Peninsula Club 4; French Club 1;  
 Oratory 2.

Pearlberg, Abraham—"Bubs" Midland Park, N. J.  
*"A chin you'd love to touch—heavily."*  
 Chemistry Club 4; Track 4; Cross-Country 4.

Peterson, Jean—"Pete" Stambaugh, Mich.  
*"A 'steady-going' girl."*  
 KAPPA IOTA  
 Kappa Iota, Treasurer 2, President 4; Glee  
 Club 1, 2, 3, 4, Assistant Manager 2, Man-  
 ager 3, President 4; Wright Hall Senate 3,  
 4, Vice-President 4; Inter-Society Council 3,  
 4, President 4; Class Treasurer 3, 4; Upper  
 Peninsula Club 4.

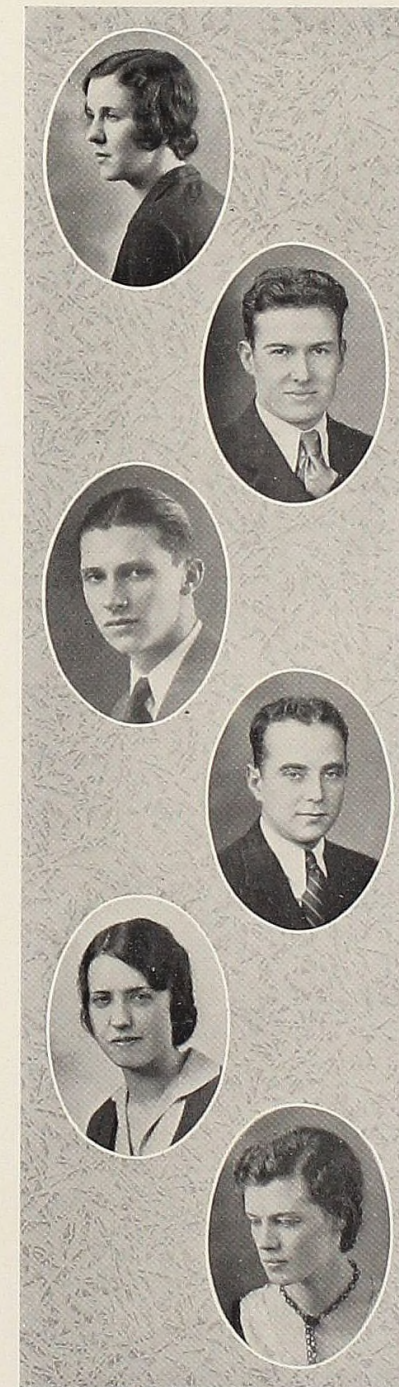
Place, George Edwin Alma, Mich.  
*"Wise is he who knows nothing of  
 women."*

Ruddock, Amos Lyle—"Satan" Detroit, Mich.  
*"He'll bluff his way past St. Peter."*  
 PHI PHI ALPHA  
 Debate 1, 2, 3, 4, Captain 3; Esperanto Club  
 3; Le Cercle Francais 3, 4, President 4;  
 Drama Club 1, 2, 3, 4, President 3; Oratory  
 1, 2, 3, 4; Student Manager of Oratory and  
 Debate 3; Phi Sigma Pi 3, 4, President 4;  
 Phi Phi Alpha, House Manager 3, President  
 4; Associate Editor of Frosh Almanian 1,  
 Editor of Almanian 4; Secretary, Michigan  
 Michigan Oratorical League, 3.

Seidel, Clarence A. Saginaw, Mich.  
*"A careful student—careful not to over-  
 do."*  
 ZETA SIGMA  
 Football 1; Zeta Sigma, President 4.

Spencer, Ida Midland, Mich.  
*"A girl who looks shy—but isn't."*  
 PHILOMATHEAN  
 Phi Sigma Pi; Philomathean, Secretary 2,  
 Vice-President 3; Class Vice-President 2;  
 Wright Hall Senate 2, 3, 4, Treasurer 4;  
 Y. W. C. A. 2, Vice-President 4.

Sprague, Elsie Rudyard, Mich.  
*"Give me liberty or I will take it."*  
 KAPPA IOTA  
 Wright Hall Senate 3, 4; Glee Club 2, 3, 4;  
 Upper Peninsula Club 4; Almanian Campus  
 Editor 4; Kappa Iota, President 4.





Toomey, Mary L. Flint, Mich.  
*"Man delights her not."*  
 Wright Hall Senate 3, 4; Y. W. C. A.; Education Club 3, 4.

Tromater, Clinton H.—"Clint" Alma, Mich.  
*"The theme of many a girl's dream."*

White, Vera V. West Branch, Mich.  
*"Still has her girlish figure—with interest."*  
 PHILOMATHEAN  
 Philomathean, Treasurer 3; Tau Sigma Gamma  
 President 4; Drama Club; Wright Hall Senate 2.

Wrench, Pearl E. Alma, Mich.  
*"Offers nightly sacrifices to the false god of love."*  
 Le Cercle Francais 1, 2, Secretary-Treasurer;  
 International Relations Club 2, 3.

Yageman, William—"Bill" Bad Axe, Mich.  
*"'Tis better to have loafed and flunked than never to have loafed at all."*

## Senior Class

IN the fall of '27 we arrived at Alma-on-the-Pine, just another bunch of freshmen, and were promptly initiated into college life, with its green "pots" and hair ribbons, the proverbial flag rush and chapel tickets. With the help of the Student Council the freshmen officers were elected, with "Bret" Heartt as president, Gertrude Walker as vice-president, Flora Lau as secretary, and Lyle Kinney as treasurer. This was the first year in which there were freshmen teams distinct from the varsity, and our teams left behind a high goal for those of following years, especially in basketball. The high social light of the year was the Frosh Frolic.

Enough of us survived that first strenuous year to return and enjoy another one under the new president, Charles Miller. Again our chief contribution to the college was in the form of a dance, this time the very successful Sophomore Sport Shuffle.

Came the fall of 1929—we were Juniors, upper classmen, people of note on the campus. Soon Alma was the possessor of a new M. I. A. A. championship banner. There was our Junior Banquet in the fall, and then all our efforts were concentrated on the J-Hop, which proved to be an enormous success with the most complete and effective decorations ever.

Our Senior year! The opening days revealed that we had dwindled into a small group, but under the leadership of Alan Dean, who was serving as president of the class for the second time, we proved that we were still capable of big things.

The class of '31 has left its marks, many of which will not be removed for a long time. The epic of "Mooie" Gussin, whose athletic ability reached the heights of which all his predecessors could only dream, will long be sung. Did our class need more athletes when we had him? With him there were Al Dean and Clinton Tromater who shone in basketball during their senior year. The other organizations of the college, the Glee Clubs, the Dramatic Club, Phi Sigma Pi, and the rest have each had representations from the class. Another member must be mentioned, he who has done more toward developing school spirit than any other ten persons, and who, before he was associated with this class, obtained for himself the title, "The Battering Ram of the North"—Red Erickson.

We are not the greatest group that has ever graduated from Alma, but we go out determined to justify our position as alumni, while we sing,

"Sons and daughters ever faithful  
 Hail thee one beyond compare."



## A Junior Jest

*A Junior I am  
And I am proud of it;  
I've accomplished great things  
In this down-trodden world,  
'Tis no other than I  
Who edits this annual  
None but the Junior  
Who throws the great Prom.  
I've lived over the days  
Of Freshman and Sophomore,  
The sophisticated Junior am I.  
I smile on the low-lives  
In cynical tolerance,  
Though they bore me  
Until I could die.  
Soon shall I take on  
Sombre tones of the Senior,  
In dignity shall I be steeped,  
But then I shall shine  
In bright past achievements  
For a hale, hearty Junior am I.*

## Our Juniors







Angell, Mildred—"Angel" Hastings, Mich.  
 KAPPA IOTA  
 Kappa Iota, Secretary 1, Vice-President 3;  
 Senate 1, Debating Team 2, Manager 3;  
 Girls' Tennis Champion 2.

Ballard, Winifred Alma, Mich.

Baney, Carl St. Louis, Mich.  
 BETA TAU EPSILON

Barnes, Alfreda Wheeler, Mich.

Biddlecombe, Fred St. Louis, Mich.  
 BETA TAU EPSILON  
 Band 1, 2, 3.

Blackstone, Donald—"Don" Port Huron, Mich.  
 PHI PHI ALPHA  
 Park College 1; University of Michigan 2;  
 Debate 3; Glee Club 3; Almanian Staff 3;  
 Drama Club 3; Pi Kappa Delta (Beta Park  
 Chapter); Oratorical Contest 3.

Boyd, Paul H. Alma, Mich.

Braddock, Louis Tawas City, Mich.  
 BETA TAU EPSILON

Brown, Barker H. St. Louis, Mich.  
 PHI PHI ALPHA  
 Debating 2, 3; Ass't in Chemistry Lab. 1, 2,  
 3; Phi Sigma Pi 3.

Brown, Leo—"Brownie" Alma, Mich.  
 Football 1, 2, 3, Captain 1; Basketball 1, 2,  
 3; Track 1, 2, 3.

Byron, Floyd—"Turkey" Saginaw, Mich.  
 ZETA SIGMA  
 Basketball 1, 2; Football 1, 2, 3; Baseball  
 1, 2.

Collier, Ora Frankfort, Mich.  
 PHILOMATHEAN  
 Senate 3; Y. W. C. A.; International Rela-  
 tions Club 2, 3.

Cook, Jack—"Jack" Alpena, Mich.  
 ZETA SIGMA  
 Baseball 1, 2; Drama Club 1, 2, 3; Maroon  
 and Cream, Assistant Business Manager 3.

Crawford, Arthur—"Artie" Detroit, Mich.  
 PHI PHI ALPHA  
 Student Council 2, 3; Phi Phi Alpha, Secre-  
 tary 2, Marshall 3; Football 1, 2, 3; Basket-  
 ball 1, 2, 3; Track 1.

Crooks, Harry Means, Jr.—"Harry" Alma, Mich.  
 ZETA SIGMA  
 Class Treasurer 3; Maroon and Cream, Asso-  
 ciate Editor 3.

Crowell, Stephen C.—"Steve" Detroit, Mich.  
 ZETA SIGMA





Dakin, Charlotte A.—"Char" Stanton, Mich.

PHILOMATHEAN

Philomathean, Treasurer 3; Class Secretary 2; Student Council 3; Senate 3; Y. W. C. A.; Maroon and Cream Staff.

Eaton, Grace—"Gracie" Sault Ste. Marie, Mich.

PHILOMATHEAN

Upper Peninsula Club 3; Y. W. C. A. Cabinet 3.

Eichhorn, Ernest—"Ernie" Bay City, Mich.

PHI PHI ALPHA

Elden, Mary Clare, Mich.

ALPHA THETA

Glee Club 1, 2, 3; Sextette 2, 3; Senate 2, 3; Y. W. C. A. Cabinet; French Club 2, 3; Secretary 3; International Relations Club 3; Inter-Society Council, Secretary 3.

Elder, Walter J.—"Walt" Alma, Mich.

Band 1, 2, 3; Oratorical Contest 1, 2, 3; International Relations Club 1, 2, 3; President 3.

Fales, Hollis F.—"Holly" Allegan, Mich.

PHI PHI ALPHA

Glee Club 1, 2, 3, Secretary 3; Band 1, 2, 3; College Quartet 1, 2, 3; Le Cercle Francais 1, 2, 3; Phi Phi Alpha, Assistant House Manager 2.

Faude, Rachel W.—"Rach" Ionia, Mich.  
(Mrs. F. C. Wood)

KAPPA IOTA

Senate 3; Y. W. C. A. Cabinet 2; French Club 2, 3; Inter-Society Council 3; Vice-President of Class 3.

Fischer, Kermit—"Kerm" Saginaw, Mich.

ZETA SIGMA

Band 1, 2, 3, President 3; Football 1; Drama Club 3.

Forshar, Mary Elizabeth—"Libby" Port Huron, Mich.

KAPPA IOTA

Kappa Iota, Secretary 2, Treasurer 3; Glee Club 1, 2, 3; Secretary 2, Sextette 3; Student Council 2; Maroon and Cream Staff 3; French Club 2, 3; Y. W. C. A. Cabinet, Secretary 3; Brownell Scholarship 2; Phi Sigma Pi.

Frost, Elmer—"Jack" Flint, Mich.

PHI PHI ALPHA

Student Council 1; Glee Club 1, 2, 3; Quartet 1, 2, 3.

Gould, Edward F.—"Eddie" St. Charles, Mich.

PHI PHI ALPHA

University of Michigan 1; Phi Phi Alpha, Secretary 2, Treasurer 3; Maroon and Cream, Campus Editor, Assistant Business Manager 3; General Chairman, J-Hop; Track 1, 2.

Graham, Ford M.—"Doc" Alma, Mich.

Football 1, 2, 3; Track 1, 2, 3.

Grey, Perry E.—"Tiger" Traverse City, Mich.

ZETA SIGMA

Track 1, 2; Glee Club 1, 2, 3; Football 1, 2, 3; Basketball 1, 2.

Harrison, Victor W. Edmore, Mich.

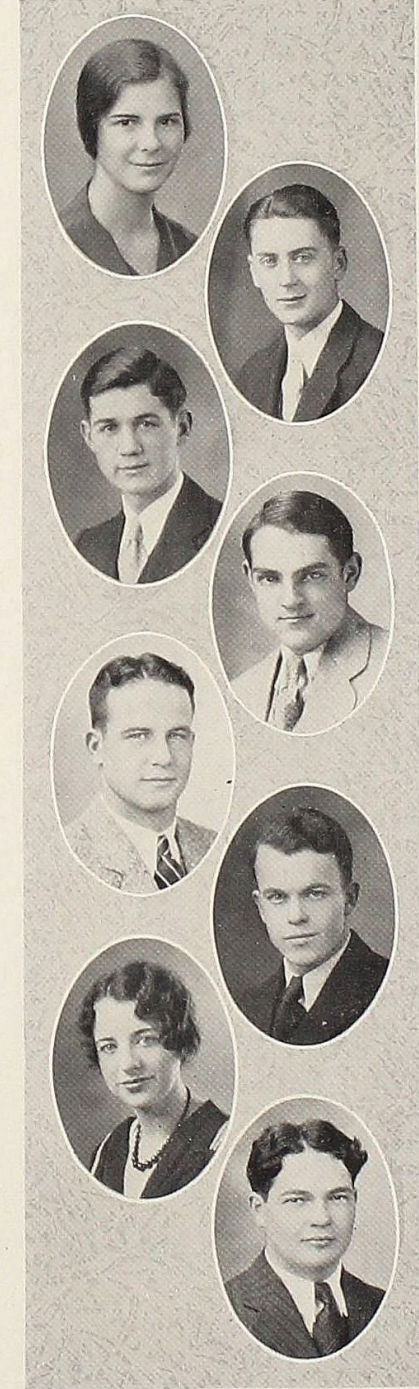
Helberg, Norene—"Norry" Armada, Mich.

ALPHA THETA

Y. W. C. A. Cabinet 2; Maroon and Cream, Calendar Editor; Alpha Theta, Secretary 2, Treasurer 3.

Hileman, Roscoe—"Buck" Ecorse, Mich.

BETA TAU EPSILON





Ingold, Maxine—"Max" St. Louis, Mich.

Jamieson, Clark B.—"The Colonel" Wayne, Mich.  
ZETA SIGMA  
Business Manager, Maroon and Cream; Zeta Sigma, Secretary 3; Football 1; Y. M. C. A. 3.

Joiner, Margaret—"Peg" Alma, Mich.

Bernice Kemler Alma, Mich.

Koechlein, Jacob—"Jake" Liberty Corner, N. J.  
PHI PHI ALPHA  
Football 1, 2, 3; Track 1; Phi Phi Alpha, House Manager 3.

Kretschmer, Elmer Bay Port, Mich.  
BETA TAU EPSILON

Layman, Louise Alma, Mich.

Littleton, Sheila Patricia—"Pat" Croswell, Mich.  
Tau Sigma Gamma 1; International Relations Club 2, 3; Y. W. C. A. 1, 2, 3; Oratory 1, 2, 3; Maroon and Cream Staff, Artist; Vigilance Committee 2.



Logan, Helen—"Kewpie" Niles, Mich.  
ALPHA THETA  
Alpha Theta, Secretary 3; Senate 1; Drama Club 1, 2, 3; Almanian 3; Vice-President of Class 1.

Long, Helen Grand Haven, Mich.  
ALPHA THETA  
Glee Club 1, 2, 3; Y. W. C. A. 1, 2, 3.

Lyman, Earle—"Oily" Saginaw, Mich.  
Glee Club 1, 2, Quartet 1; Band 1, 2, 3; Beta Tau Epsilon 1, 2; Maroon and Cream, Snapshot Editor; Chemistry Club 1, 2, 3.

Martin, Gertrude B.—"Peg" Detroit, Mich.  
PHILOMATHEAN  
Oratorical Contest 2; Christian Endeavor, Secretary 1, 2.

Megill, Everett Merle Breckenridge, Mich.

Moon, Walter St. Louis, Mich.

Moore, Clarence E.—"Dinty" Niles, Mich.  
ZETA SIGMA  
Zeta Sigma, House Manager 3; Class Treasurer 1, Class President 2; Student Council 1, 2; Drama Club 1, 2, 3, President 3; Oratory 1; Debate 2; Athletic Board of Control, Secretary 3; Track 1, 2, 3; International Relations Club 3; Student Manager of Athletics 3.

Moore, Ruth Sandusky, Mich.  
KAPPA IOTA  
Glee Club 2, 3; Y. W. C. A. 2, 3.



MacCurdy, William—"Bill" Alma, Mich.  
PHI PHI ALPHA  
Band 1, 2, 3; Track 2, 3.

Mackenzie, Marion—"Mickey" Detroit, Mich.  
KAPPA IOTA

McLellan, C. Douglas—"Smoke" Calumet, Mich.  
PHI PHI ALPHA  
Student Council 3; Class Treasurer 2; Class President 3; Almanian—Freshman Editor 1, Columnist 2, Associate Editor 3; Maroon and Cream Editor; Phi Phi Alpha, Secretary 2, Vice-President 3; Football 1, 2, 3; Basketball 1; Track 1; Oratory 1, 2, 3; Christian Endeavor, Treasurer 3; College Men's Bible Class, President 3; Phi Sigma Phi 3; Interfraternities Council 3; Upper Peninsula Club 3; Y. M. C. A. Secretary 3.

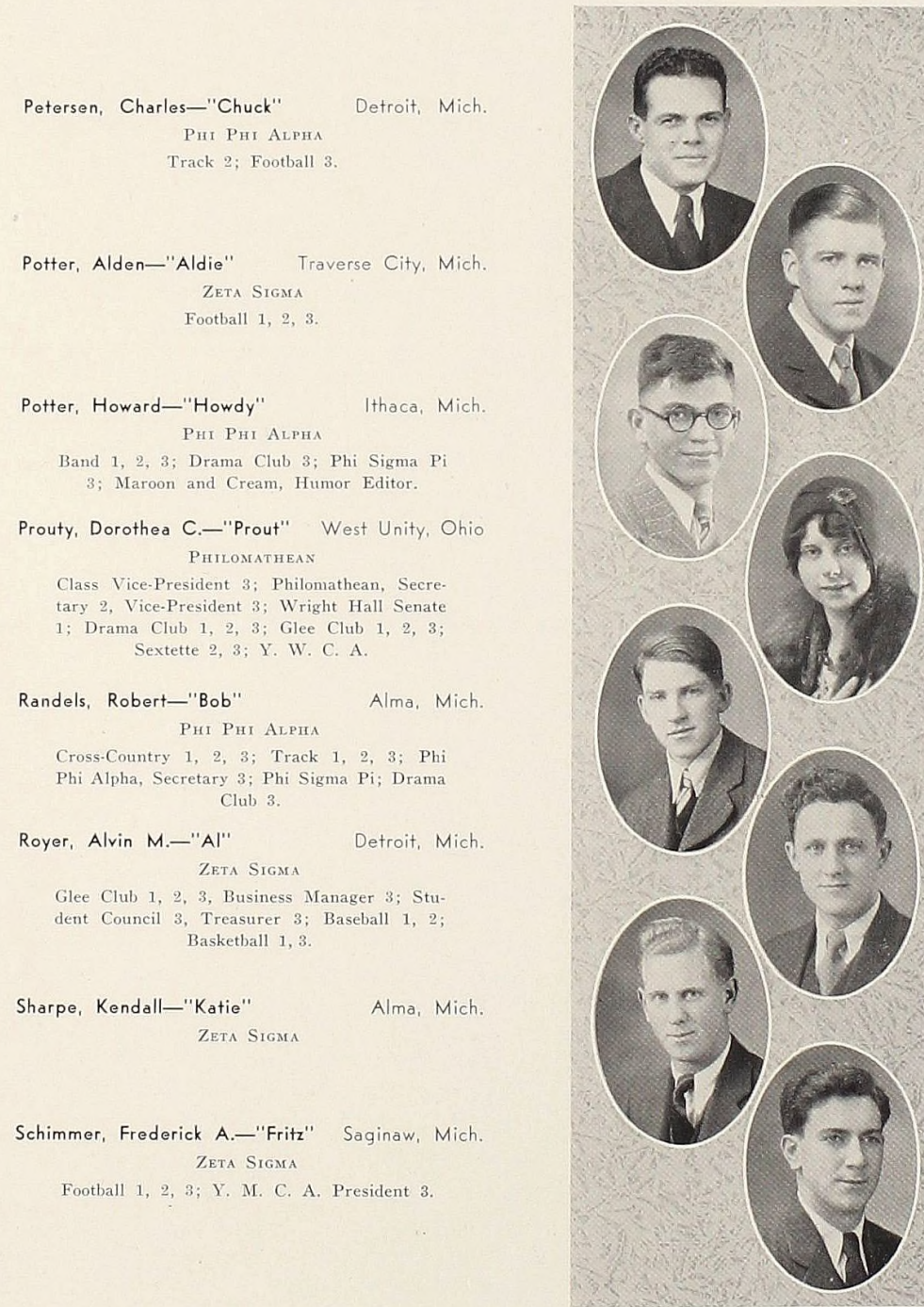
McMillan, Margaret Maybelle—"Marg" Munising, Mich.  
KAPPA IOTA  
Glee Club 1, 2, 3, Sextette 1, 2, 3, Manager 3; Drama Club 1, 2, 3, Secretary 2; Senate 1; Y. W. C. A. Cabinet 3.

Morrison, Muriel Irene—"It" Croswell, Mich.  
Tau Sigma Gamma 1; Y. W. C. A. 1, 2, 3.

Nestle, Roy Alma, Mich.

Nunn, Robert—"Bob" Riverdale, Mich.  
PHI PHI ALPHA

Olmstead, Leslie—"Les" Elwell, Mich.  
ZETA SIGMA



Petersen, Charles—"Chuck" Detroit, Mich.  
PHI PHI ALPHA  
Track 2; Football 3.

Potter, Alden—"Aldie" Traverse City, Mich.  
ZETA SIGMA  
Football 1, 2, 3.

Potter, Howard—"Howdy" Ithaca, Mich.  
PHI PHI ALPHA  
Band 1, 2, 3; Drama Club 3; Phi Sigma Pi 3; Maroon and Cream, Humor Editor.

Prouty, Dorothea C.—"Prout" West Unity, Ohio  
PHILOMATHEAN  
Class Vice-President 3; Philomathean, Secretary 2, Vice-President 3; Wright Hall Senate 1; Drama Club 1, 2, 3; Glee Club 1, 2, 3; Sextette 2, 3; Y. W. C. A.

Randels, Robert—"Bob" Alma, Mich.  
PHI PHI ALPHA  
Cross-Country 1, 2, 3; Track 1, 2, 3; Phi Phi Alpha, Secretary 3; Phi Sigma Pi; Drama Club 3.

Royer, Alvin M.—"Al" Detroit, Mich.  
ZETA SIGMA  
Glee Club 1, 2, 3, Business Manager 3; Student Council 3, Treasurer 3; Baseball 1, 2; Basketball 1, 3.

Sharpe, Kendall—"Katie" Alma, Mich.  
ZETA SIGMA

Schimmer, Frederick A.—"Fritz" Saginaw, Mich.  
ZETA SIGMA  
Football 1, 2, 3; Y. M. C. A. President 3.



Smith, Marian Alma, Mich.  
PHILOMATHEAN

Tarrant, Eugene W.—"Gene" Royal Oak, Mich.  
ZETA SIGMA  
Track 1, 2, 3; Zeta Sigma, Secretary 3;  
Drama Club 2, 3; Glee Club 1, 2, 3, Secretary 2; Band 2, 3, Business Manager 2, 3;  
Drum Major 2.

Tarrant, Thelma Royal Oak, Mich.  
ALPHA THETA  
Drama Club 3.

Temple, Helen—"Tempie" Flint, Mich.  
ALPHA THETA  
Y. W. C. A. Cabinet 2, Treasurer 3; Alpha Theta, Corresponding Secretary 3; Class Secretary 3.

Waider, Louise Henrietta Flint, Mich.  
Y. W. C. A. 1, 2, 3; Wright Hall Senate 1, 3; Tau Sigma Gamma 1, 2, 3, Treasurer 1, 2; International Relations Club 2, 3, Secretary 3; Debate 1, 2, 3.

Wehrly, Harry L. Nappanee, Ind.  
ZETA SIGMA  
Class President 1; Student Council 1, 2; Football 3; Basketball 1, 2, 3; Track 1, 2, 3; Band 1, 2; Glee Club 1, 2, 3; M. I. A. A. Representative 3; Athletic Board of Control 3.

Williams, Carl Highland Park, Mich.  
ZETA SIGMA

Williams, Jack L.—"Cob" Alma, Mich.  
ZETA SIGMA  
Football 1; Track 1, 2, 3.

## Junior Class

SOME able wag, at one time or another, skillfully concealed a good-sized sermon in one short phrase, when he said, "The good that a man does lives after him." Listen, my children, and tell me—is it not so with most anything in this good old world?

This June, the class of 1932 will celebrate its third birthday. Three short years ago we entered the portals of Alma College, one hundred seven strong. During the years, some have seen fit to discontinue the journey, others have fallen by the wayside, but yet, as we are about to enter the proverbial last lap of our journey, we boast the largest Junior class in the history of Alma College. Therefore, being embryo seniors, it shouldn't take a Sherlock Holmes to figure that, barring accidents, 1932 will continue to blaze the trail further and gain greater heights on the home stretch than heretofore, if such a thing is possible. This may seem a bit of personal indulgence, so it behooves the scribbler to back up this statement with facts.

The only difficulty we faced in the flag-rush, our freshman year, was getting up at the assigned hour to pull the flag down. The tug-o-war was another affair that merely broke the monotony, and upset the social activity of the day. The Frosh Frolic and Frosh Almanian, under the auspices of the freshmen, were howling successes. (Some of the merchants are still howling.) Oh yes! I almost forgot, Harry Wehrly was Skipper, Helen Logan was First Mate, Ila Scott took notes at the meetings (both of them) and Clarence Moore attended to the coffers.

Due to a brainstorm of one of the Student Council members, the flag-rush was held under rules which would have necessitated the use of fire-arms to keep the Frosh from winning, our sophomore year. That's not an excuse, just hard facts. However, we won the tug-o-war, contributed to the championship football team, the debate squad, and the basketball team. Well, to make a long story longer, we had a finger in every pie on the campus, and there were some pies "in them there days."

Clarence, alias "Dinty" Moore, was promoted to president, Dorothea Prouty was his right-hand woman, Charlotte Dakin was secretary, and C. Douglas McLellan was treasurer. As for social events—What a Sophomore Sport Shuffle we had, and what a step!

So it is that the last chapter of this story cometh unto thine eye. We were guided this year by "Mac" McLellan, as counsel, "Rach" Faude as vice-counsel, "Tempy" Temple as secretary, and Harry Means Crooks as guardian of the strong-box. As in years past, we again contributed much to the studious channels of our Alma Mater, boasting some very fine students of which ye shall hear more anon, and with classmate Eddie Gould as general chairman, a J-Hop was put on—which knows no equal? (ask those who were present!) Contributions were also received from the Juniors in the social (see Wright Hall), the forensic (see Webster), and the athletic (see Coach) side of college life.

We are proud of our deeds and hope that when we darken not these doors again, we may leave some good, that it may live on after us.



## A Sophomore Psalm

*No one is my master; I rule my own life.*

*I equal my soul with that of the Senior.*

*I care not for the wrath of the Junior. He maketh  
me sore; He crampeth my style with his  
Sumptuousness.*

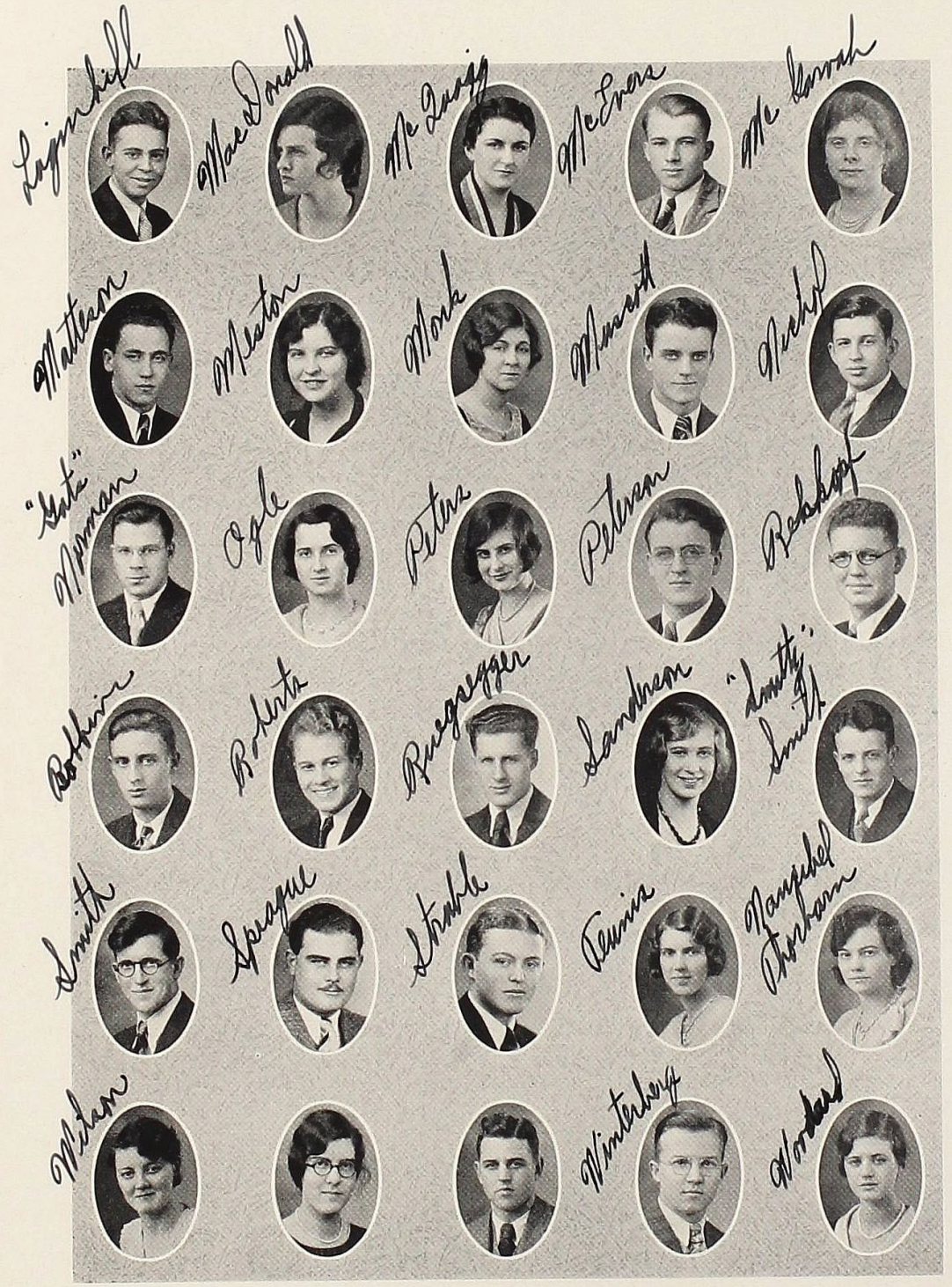
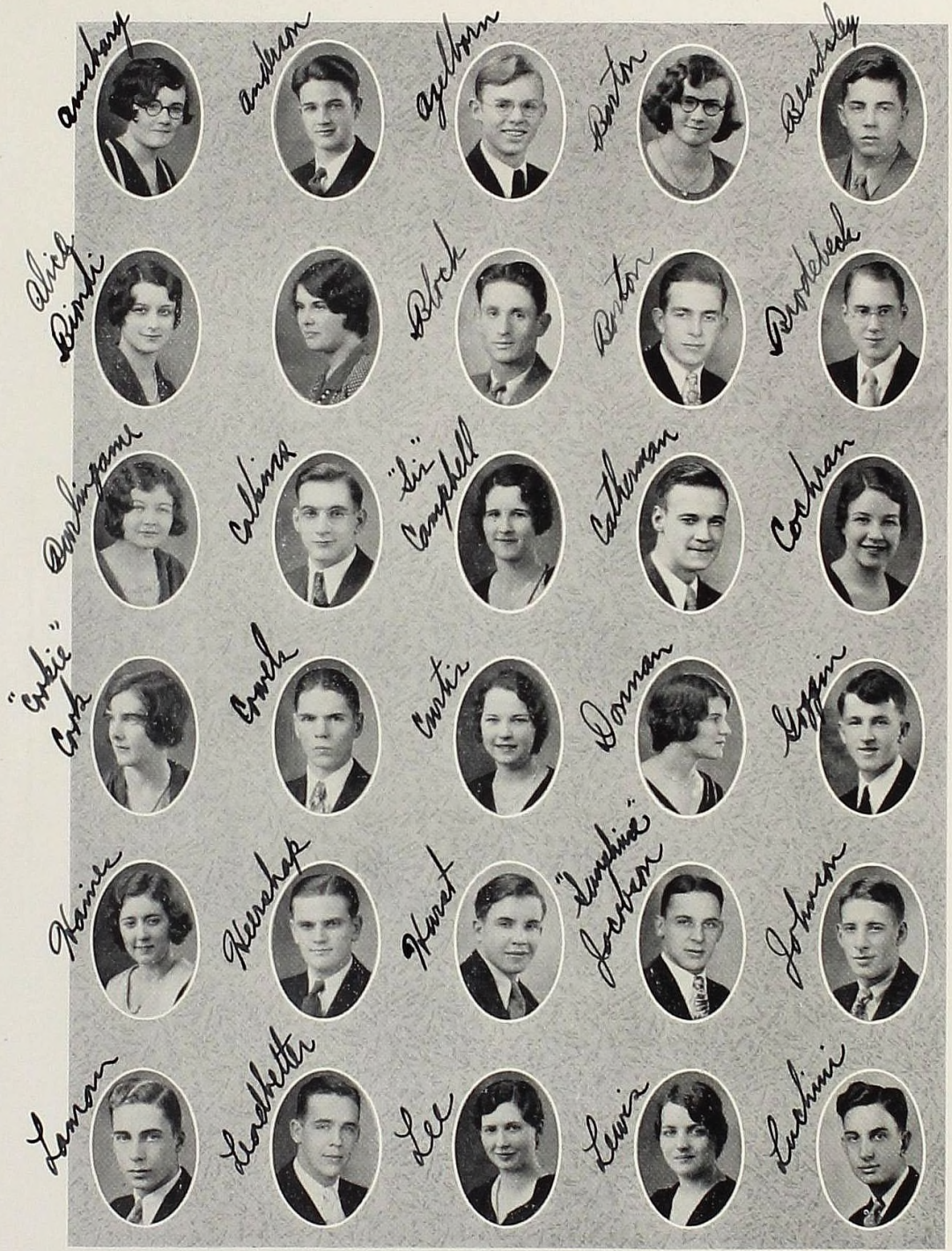
*Yea, though I pass not in Psych, I will not study  
for my mind is superior and I know 'tis the  
Prof's fault.*


*He giveth me tests full of useless questions that my  
friend doeth not know; I looketh appealingly.*

*Surely he wilt have compassion and tell me I need  
not remain; but no, I, the superior, must  
dwell in his classroom forever.*

## Our Sophomores







## Sophomore Class

AND it came to pass that in the fall of the nineteen hundred and twenty-ninth year of our Lord, even the ninth month, there was a general exodus from far and wide, even from the wilds of Newberry and the plains of lower Michigan by the river Detroit, hard by Windsor. And behold, there gathered at the college at Alma 110 of the chosen youth of the land, and they were banded together as the class of '33. And the rulers of the school said unto them, "Behold, you are to prove your worth by wresting from yon scummy Sophs their strip of canvas in the Flag Rush on the morrow." And verily, the youths fought valiantly and in record time captured the flag.

And soon they must choose one among them to be their leader, and with the sage help of the Student Council, they elected Milton Smith, president, Alice Biondi, vice-president, Helen Lee secretary, and James Coleman treasurer.

And it came to pass, as is the custom in Alma on the Pine, that the men of all the college, even the lowly Frosh, sallied forth from their abode upon the unsuspecting townspeople in the annual Pajama Parade, after which they retired victoriously with their booty unto their own dwellings.

And soon their leader called them unto him and after a time, they came forth with the biggest and best Frosh Frolic ever, with the added novelty of being a financial as well as a social success.

With the Homecoming parade came fresh triumphs for the class of '33, for lo, the Freshman girls came through with the prize-winning float in the parade.

And with the spring of that same year came the Frosh's annual bath in the river Pine to which even our worthy class submitted, as is the custom at Alma. Then came Campus Day and "Pot Night," at which the Frosh entertained and were entertained. And great was the battle waged o'er the bonfire of Pot Night and exceedingly great was the rage of the Sophs thereof at their foiled attempt to destroy it.

Through the spring and summer months the class of '33 grew strong and waxed in favor with themselves and their colleagues and when fall came again, they descended upon the school in a body, ready for new conquests. And there was held an election. And it came to pass that the outcome was: John Laman, president; Cora Lewis, vice-president; Katherine Campbell, secretary and treasurer. Then came the Flag Rush again, and the not-quite-invincible Sophs were forced to let their inferiors take away their flag. But turn about's fair play and we did it last year.

And again came the Pajama Parade and football season, the outcome of which was aided mightily by the addition of seven Sophs to the team and Smitty, disciple of good cheer (ing), to the student body in general.

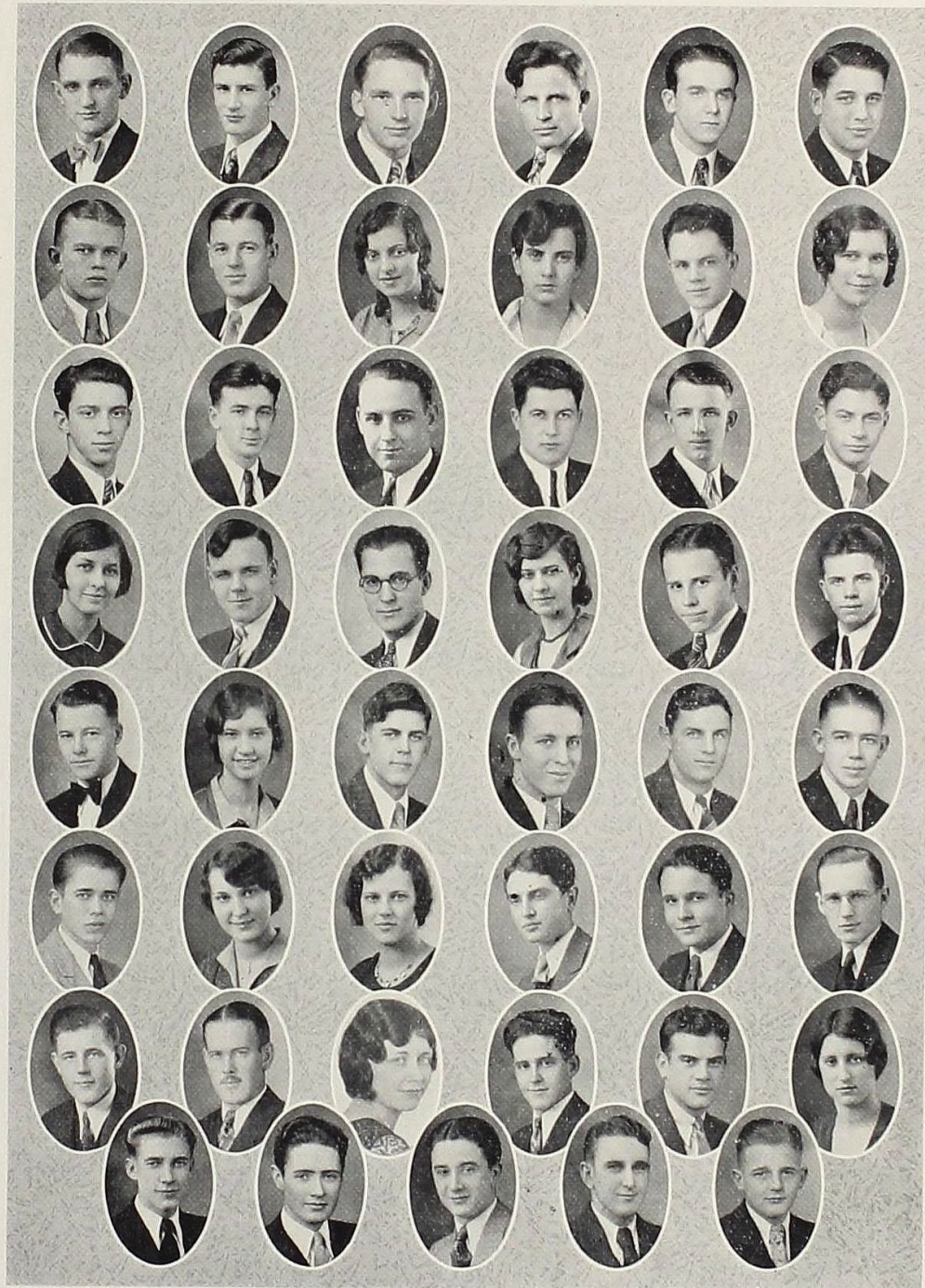
Unto the day of this writing, the greatest event of them all was when the Sophs put on the classic Sophomore Shuffle, this time held in the gym, and the most elaborate college party so far of the year.

Though crowned with laurels from our successes, we are not content to sit by and bask in the glory of past achievements, but again sally forth in search of new adventure and fresh triumphs. Selah.

KATHERINE CAMPBELL.

Our  
Freshmen







## Freshman Class

**T**HE Class of 1934 made its debut in Alma College September 15. The first few days were spent in attending teas, getting registered, finding out what it was all about, and then attending more teas.

Our first opportunity to prove our worth was the flag rush. After much slandering of the Sophomore class, in the form of an answer to their challenge, the Freshman took down the flag in forty and four-tenths seconds.

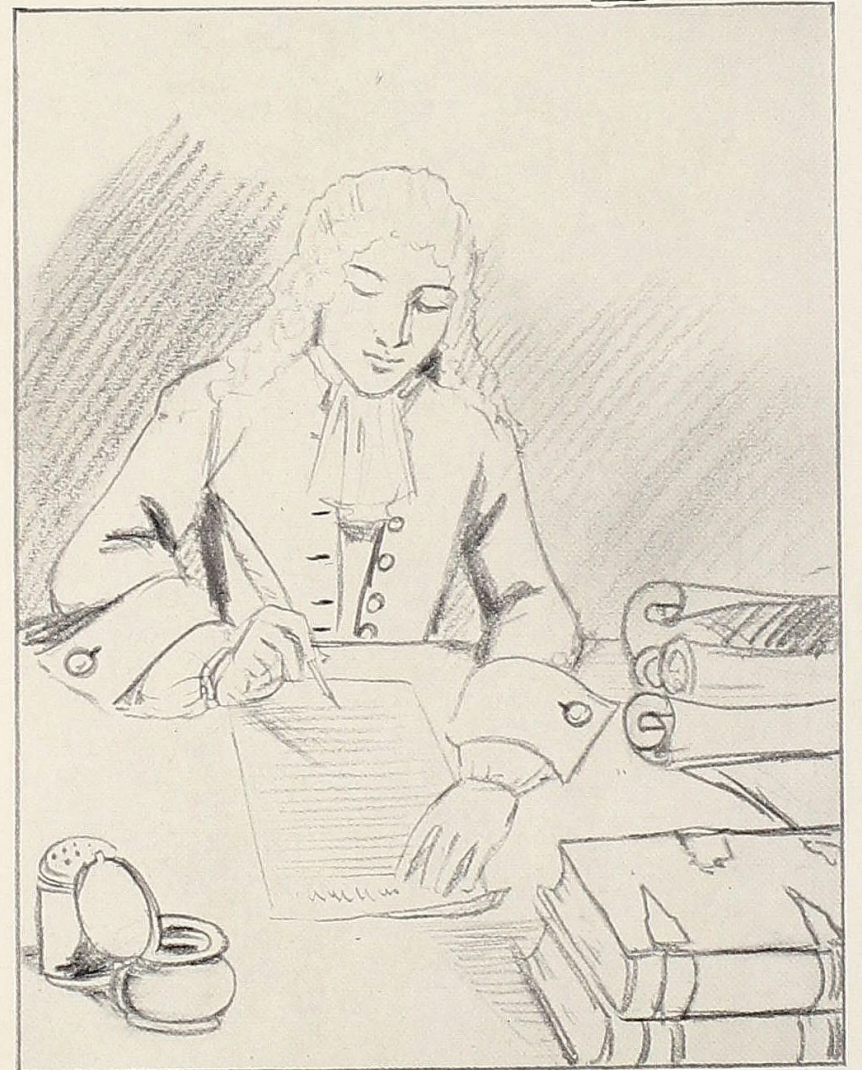
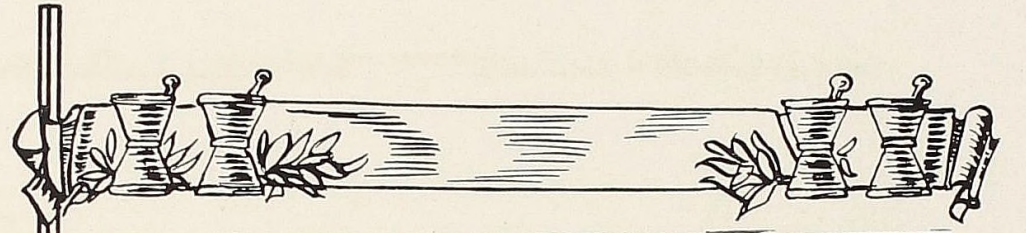
At a very heated political meeting Kellog Beach was elected president, Marjorie Lundbom was chosen for vice-president, Helen Louise Vincent for secretary-treasurer, and Sayles Richter for student council representative.

About this time the green "pots" and hair ribbons put in their appearance. The importance of the part they played in the history of the class can best be told by those who forgot to wear them.

Every Freshman class remembers its Pajama Parade as one of the outstanding events of the year, and the Class of '34 is no exception. This memory is perhaps the most vivid in the minds of the participants, but Wright Hall also remembers that serenade.

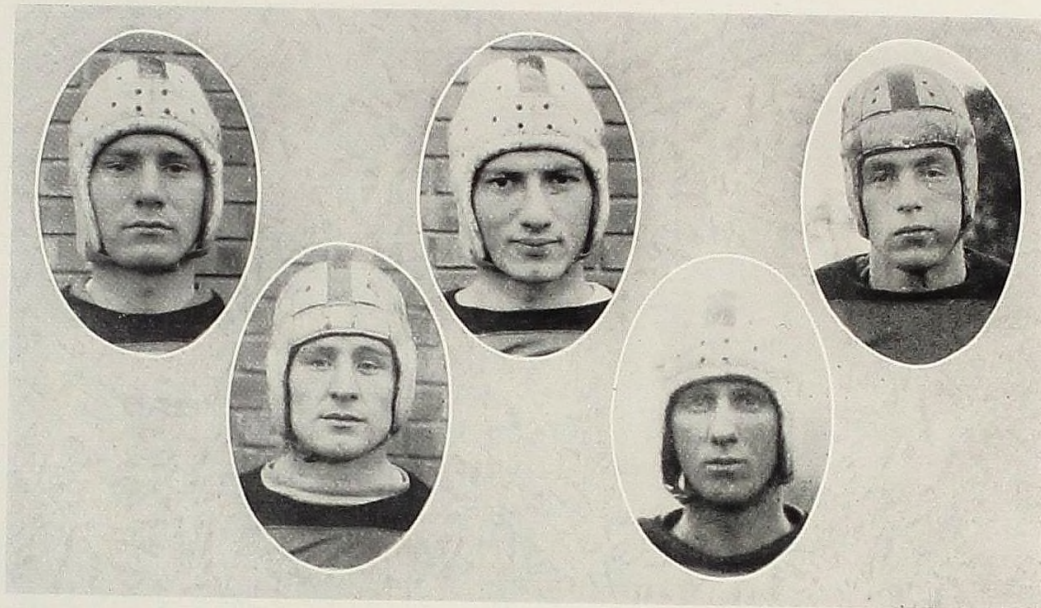
Our supreme effort was the Frosh Frolic. We certainly worked on those decorations, but I think that most of us felt that it was worth the trouble. Even the Sophomores told us that the party was a success!

We have enjoyed this first year in spite of the Vigilance Committees, Student Marshal, "Hell Weeks" and such. Perhaps no one but a member of the Class of 1934 can realize just how much we have enjoyed it.

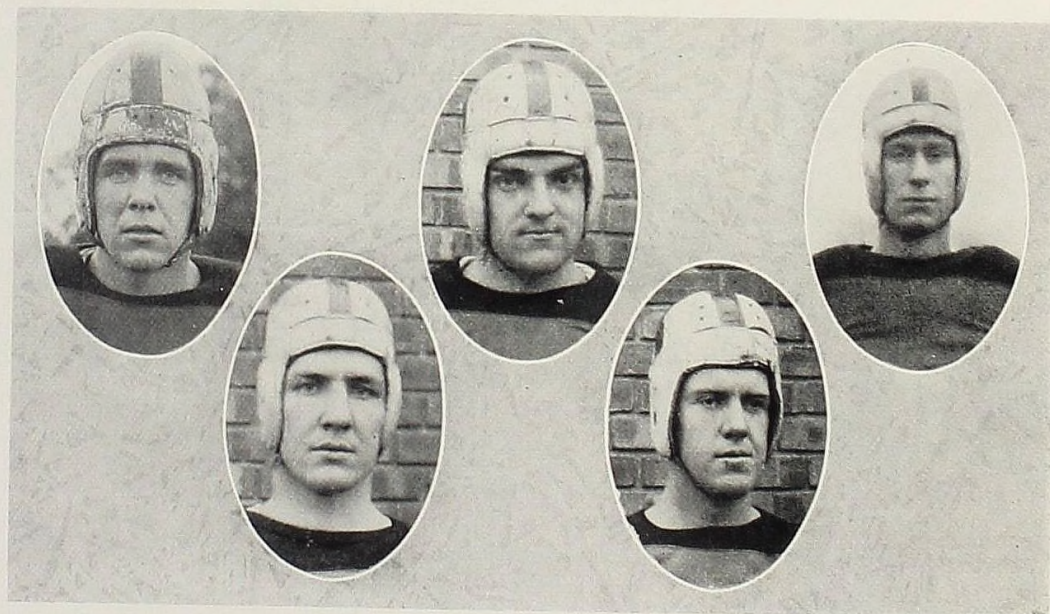


## OUR ATHLETICS

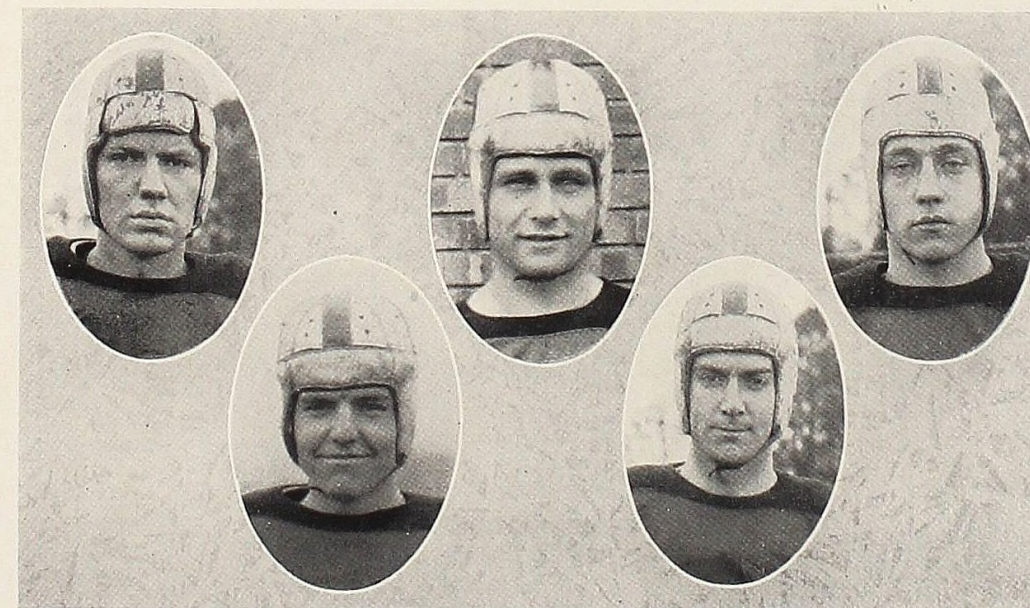
*Robert Boyle writing the law that "the volume of a gas varies inversely as the pressure," 1660.*



Baldwin—Not a man on the team with more fight than "Baldie." Last year.  
 Captain Carl Gussin—Our triple-threat man. His last and best year.  
 Borton—When "Bull" hit the line it was usually broken. Two more years.  
 Brown—A fast red head. One year more.  
 Sharp—Short but speedy. One year.  
 Leadbetter—One of the best reasons we gave many a team a hard fight. Two seasons.  
 Graham—A boy who really loves to play the game hard. Another year.  
 Koechlein—Even water couldn't get through his side of the line. One year.  
 McLellan—This man has a mania for stopping line plunges. Another season.  
 Potter—His play inspired every man on the team. One year more.



Johnson—He was right there when passes were to be caught. Two more years.  
 Crawford—Nothing sensational, but always a consistent fighter. One year.  
 Jacobson—Bids fair to be a typical Northern fighter. Two more seasons.  
 Wehrly—Track, basketball, FOOTBALL, and how! One season left.  
 Muscott—Speed was his long suit. Another year, maybe.  
 Rehkopf—He could absorb plenty of punishment and like it. Two years yet.  
 Grey—No need to worry about his side of the line. Another season.  
 Matteson—A plenty tough boy with two years more.  
 Byron—Accurate snapping-back, and plenty of fight. One more year.  
 Schimmer—He kept the center of the line intact always. Another year.





## Varsity Football

### SYNOPSIS

COACH R. R. CAMPBELL starts the season with nine lettermen and a rosy outlook as the boys frolic on the greensward in early September. The plot is carefully worked out and all goes well until the villain in the person of one Kalamazoo College enters. Kazoo (as she will be called) takes all that is near and dear to Alma, but later it is found that this wasn't so nice, so Alma whips Tech, and the family is once more united and lives happily (?) ever after.

#### ACT 1, SCENE 1.

Alma-Michigan State: The place is at East Lansing, Michigan. The time was about two weeks too early. Amid delighted war-whoops from the twenty-five Alma rooters who came down for the game, the Alma College Athletic Department, in its entirety, came trotting out on the field in their new suits. The State boys seemed to take it as a light work out (their error). Gussin ran, Brownie ran, everybody ran. The line was impregnable. Anyhow, it was one of those so-called moral victories, and a darned good game. Score: State 28—Alma 0.

#### ACT 1, SCENE 2.

Alma-Olivet: The place is at Olivet. The time was just right (for baseball). With the immortal words of Sherman "that war is anything but nice" ringing in their ears, the boys got an idea of just what he meant on the Olivet field. Gussin scored both touchdowns on passes from "Baldie" and Sharpe. Perry got terribly angry, threw away his headgear and then showed 'em. Johnnie was forced out with a bum ankle, but he'll be back. Too hot, but a swell game. Score: Alma 13—Olivet 6.

#### ACT 1, SCENE 3.

Alma-Hope: The place is Holland. Came the dawn (and was it cold!). "Da Bull," thoroughly warmed up from the week before, stepped into the blizzard and tore off a batch of tackle for fifty yards and the first counter. Then a series of plunges and the "Bull" went over again. (She wasn't there, either.) "Brownie" scored also with a swam dive over various and sundry bodies, as did Tysse of Hope. "Da Bull," "Brownie," and "Baldie" carried the ball. "Mooie" ran the team, and "Aldy" and Perry were there at all times in the line. Good game, but was it cold? Uh Huh. Final count (in good American numbers): Alma 21—Hope 6.

#### ACT 1, SCENE 4

Alma-Hillsdale: The place is Alma. With proud Mamas and Papas looking on, the boys put on a real battle, and though it was close, who cares? We won. It was "Mooey's" first game as actual captain, so he started with a touchdown from a pass by "Brownie." A while later the home talent in the person of the "Bull" snared Gussin's pass for another counter. Pellegren and Knight scored for the 'Dales. . . . "The Bull," the "Baldie," the "Brownie," and the "Mooie" were making the 'Dales wonder what it was all about. Potter, Koechlein, Lead-better, and Graham showed 'em how to play the line. A few of the parents almost passed out from excitement (we hope), but shoot, we won. Net returns: Alma 14—Hillsdale 13.

#### ACT 1, SCENE 5

Alma-Albion: The place is Alma on the Pine. Our old friends pay us a visit. The place is full, (so are some of the spectators). The real incentive was the first championship team from Alma in 1900 in person in almost its entirety. They played when football was a pup. "Mooie" "snuck" through for the first one, then "Brownie," who had declared a field day for himself, snagged two enemy passes and raced 20 and 75 yards, respectively, for six points each (and points were at a premium, too). "Son" closed the scoring by dribbling half way, then crashing over for another. Well, let's see. "Da Bull" was at center (an how!). "Mooey," "Brownie," and "Baldie," and "Katie" came through amidst a fanfare of trumpets. "Aldy," Perry, and Jake, and guess who? our old pal McLellan, stopped everything that came their way, while "Doc" and "Johnnie" were inspired (by what?). Oh, yes. Nelson scored both of the Methodists so-called tallies. The victory created such a furor that if all the alcohol consumed after the dance was laid end to end—well, anything might happen. Net results: Albion 12—Alma 27, as the crow flies.

#### ACT 1, SCENE 6

Alma-Mt. Pleasant: The place is the Alma bowl(?). How it started no one knows, but one of their plays, where Killoran and Paul took turns carrying the ball, and the other ten men piling on the tackle, was a good one. "Katie" came through in the last few minutes with our tally, while Paul waltzed through with three and Wood with one. McLellan and Brownie were carried off, making it a rather expensive defeat. That's all (that's enough). Wait till next year. McLellan's K. O. gave the long-unused college stretcher a work-out, so maybe the game was worth while anyway. Alma 7—Mt. Pleasant 27.

#### ACT 1, SCENE 7

Alma-Kazoo: The place is Kazoo. "Mooie" took the wrong time to ring down the curtain on his M. I. A. A. football career, but the fight was there to the last minute, and it was just too bad! A lad named Deehr, who could have been "Deer" or "Moose," took it upon himself to win the championship, and counted three times to the "Ghost's" one. . . . The bright spot of the whole affair was the way the "Bull" backed up the line. . . . Anything else to be said is better left unsaid. Total casualties: Kazoo 21—Alma 7.

#### ACT 1, SCENE 8

Alma-Flint Tech: The place is the Flint bowl (very nice). It was a close game during the first fifty per cent of the festivities, but then the "Ghost" remembered that when it was over he would don no more moleskins for Alma, so he proceeded to make five more touchdowns for a total of 31 points (add one kick to the touchdowns). The "Bull," playing in what seemed like home, made one. "Brownie" pulled his favorite of intercepting the spheroid and stepping over seven chalk lines for a counter. Olds carried the whistle. "Mooie," "Brownie" and "The Bull" carried the ball. Tech carried on. . . . With the gun, also came the curtain for the "Ghost" and "Baldie." Did they merely fight for Alma? No! They gave all they had and a bit more. Net count: Tech 0—Alma (you tell it).



Moore, Mgr.      Crowell      Johnson  
 Brown      Williams      Sharp  
 Dean      Wehrly      Gussin, Capt.      Crawford      Tromater      Coach Campbell  
 Borton

## Our Basketball Season

(A season inspired by our fair co-eds)  
 (A write-up inspired by "The Old Maestro")

Being a series of hair-raising events which happened to ye good old Alma College basketball squad in and about ye Memorial gym and ye M. I. A. A. gymnasiums near and far. Will you listen?

CHAPTER I opens in ye big, new Kalamazoo gym, and the Almites (or must we say Alma-tites) met one "Cam" Murdock whose uncanny accuracy and brilliant floorwork was just a bit too much. The "Bull" and "Mooie" kept it close right to the last, and good old "Brownie" just about turned ye tables, but the basket was loose (or something). However, cheer up! Better days are coming. Net returns: Alma 21, Kazoo 22.

Chapter II occurred (one might say) at Albion,—dear old Albion, and although several cash customers were carried out suffering from exhaustion, excitement, and halitosis (forgive me) it was a good game. The score, as they say in goode olde England, was knotted at half time (and several times thereafter). But ye warriors of ye Maroon and Cream stayed right with the opposition until the last twenty-six seconds when good old Brown dropped a foul through the filet (French for net) and won the game. Besides picking up half a score of baskets and a gift shot, "Mooie" held Gray, Albion's shining light, well in check (and double check). Alma 28, Albion 27.

Chapter III. The customers at ye good old gym got a bit of football mixed with their basketball diet. Outside of watching "Brownie" sink five baskets and three fouls, "Good Old Trumpeter" play a fine defensive game, and Wehrly break a pair of ribs, there wasn't much to see. Alma 37, Flint Tech 33.

Chapter IV. Spoelstra and his "flying Dutchmen" invaded ye Memorial gym and the third one-point victory for ye dear old Alma Mater left some of the boys with grayish locks. But they're better now, thanks. Alma 44, Hope 43.

Chapter V. It was in a lonesome old town. Hillsdale to be exact. With Gussin off color, "Squirt" Williams came through with a batch of baskets to share scoring honors with Leo. Restifo and Brooks ran all over the place sinking shots, but it was their own back yard, so they should. Alma 42, 'Dales 54.

Chapter VI. "Sandy" Gussin entertained Milankov in his play room and didn't give him a thing! While Carl was playing with Alex, the rest of the boys were busily engaged making points, et cetera, et cetera, and a good old et cetera. We hope you liked it when the score was Alma 32, Olivet 25.

Chapter VII. Michigan State College introduced successfully for the first time a blocking offense. The idea was that Alma's quintet would be blocked by four Spartans (good old Sparta). Thus it was that State's fifth man went on a scoring spree much to the discomfiture of Leo and Carl who did their d——st throughout. Alma 20, State—Two times twenty plus two.

Chapter VIII. Albion dropped in for the evening and Gussin and Brown proceeded to take the visitors into camp via some tricky basketball. Our defense was impregnable (a \$3 word), and the game ended Alma 36, Albion 29.

Chapter IX. The Olivet boys were all pepped up for a big evening, and stepped into an eight-point lead before Alma knew there was a game (Forgive us!). Gussin then started popping the spheroid into the meshes, but alas, and alack, 'twas too late. When the gun sounded (denoting the end of the festivities) Olivet was out in front 37 to 30.

Chapter X. Alan Dean of McBride, Niles, etc., came out of his shell and ably assisted by Brown and Gussin, proceeded to hand last year's champs a defeat. Everything worked—short, long, intermediate shots, stalling, et al., to help avenge that one-point defeat in the first game. (But don't tell the coach I told you.) Alma 32, Kazoo 26.

Chapter XI. 'Twas a balmy sprig (forgive my co'd) evening, and a goodly crowd was on hand to see the "King's Horses" in the last home game. It was doubtful if "Mooie" could play before the game started, due to an acute attack of something or other. Crawford was again disqualified for hitting below the belt,—or was it holding? (Port Huron papers please copy). In the last fifteen minutes Gussin gave the cash customers some real thrills and split scoring honors with the "Bull." Alma 34, Hillsdale 38.

Chapter XII. The boys sailed for Holland drunk and early, for the last game of the current (or rather, basketball) season amid a driving sand storm. It was Captain "Sandy" Gussin's last game for the dear old Alma Mater, and besides scoring fifteen points, wearing out three of ye opposition, defending here and there, he had naught to do with the victory. "Bull" held Spoelstra well in check and garnered nine points (two buckets from a strong left paw). Besides Gussin,—"Brownie," "Good Old Trumpeter" and "Stinky" Dean donned their suits for the last time, but left Hope cold with a 35-30 score.

Now some music. Au Revoir, toodle oodle, a bit of a tweet-tweet, and once more pleasant dreams, for now we can play Wright Hall to our heart's content, and our pocketbook's capacity.

## A Tribute

COLLEGES in the Michigan Intercollegiate Athletic Association have won fame for the fine sportsmanship which their teams demonstrate in competition with each other. Like the other, Alma is proud of this tradition and strives to uphold it.

This year Alma lost but one game, and that to Kalamazoo. The week following the game, the Kazoo students penned a poem, which is a real tribute to Alma's team, her band, and her student body, and which reflects this spirit of fine sportsmanship existing between the schools. We give it to you, that in the years to come you may remember it as a happy memory of true sportsmanship, real courage, and genuine friendship which exists at Alma.

### To Alma

Alma, as friend to friend,  
We send out heartfelt praise to you.  
The spirit which you brought to us,  
Nigh thrilled us through and through.  
You sang and clapped your hands,  
You came in goodly numbers, too;  
And 'round that peppy band of yours,  
Your spirit always grew.  
So keep that gallant fight!  
Support the wish to win and do!  
For in one game, Oh Alma,  
You lit the torch of old Kazoo.

From Kalamazoo



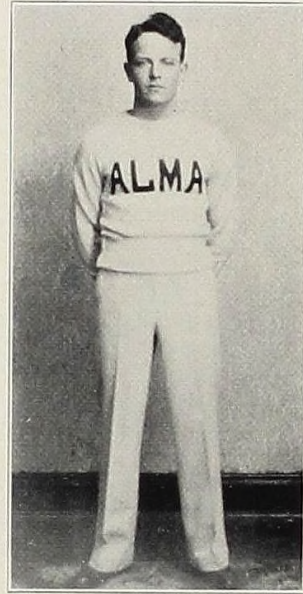
## Our Coach

IT is a far cry from an Alma College football field to a Detroit Municipal Court, and it is difficult to realize that there could ever be any connection between the two. Despite the seeming impossibility of this situation, it is a fact. This year a local lawyer, presenting a client's case in a Detroit court, told the presiding judge that he was from Alma. The judge's reply was, "Oh, yes, that's the school that turns out such good football teams."

Alma does turn out good football teams, and she is proud of them. But behind the successes of her teams is a coach whose conscientious work makes such teams possible. This man is Coach Royal R. Campbell, whose Scotch temperament has enabled him to turn out lines so tight that not even water can get through.

Winning three and tying for one of the last five M. I. A. A. championship football titles is sufficient evidence of his ability. And much of the success of his teams may be attributed to Coach Campbell's watchword, "Everything's all right."

Success in football is not his only accomplishment, for he is also famous for his basketball teams, his fine spirit of fair play, and his keen wit.

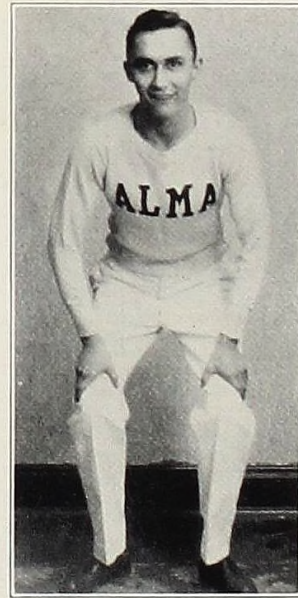
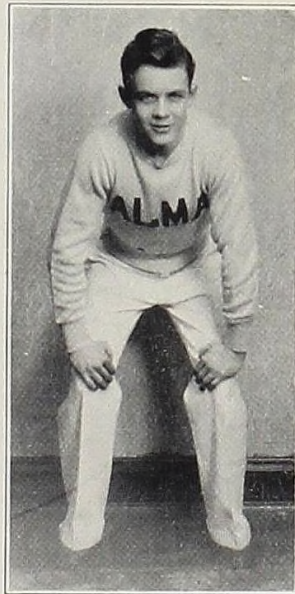


## Cheer Leaders

THREE lively jumping jacks, with spirit aplenty, kept Alma's rooters on their toes this year and developed a cheering section that really did cheer. Although these boys have never touched the football or basketball, they have done more than a little in winning athletic titles for Alma.

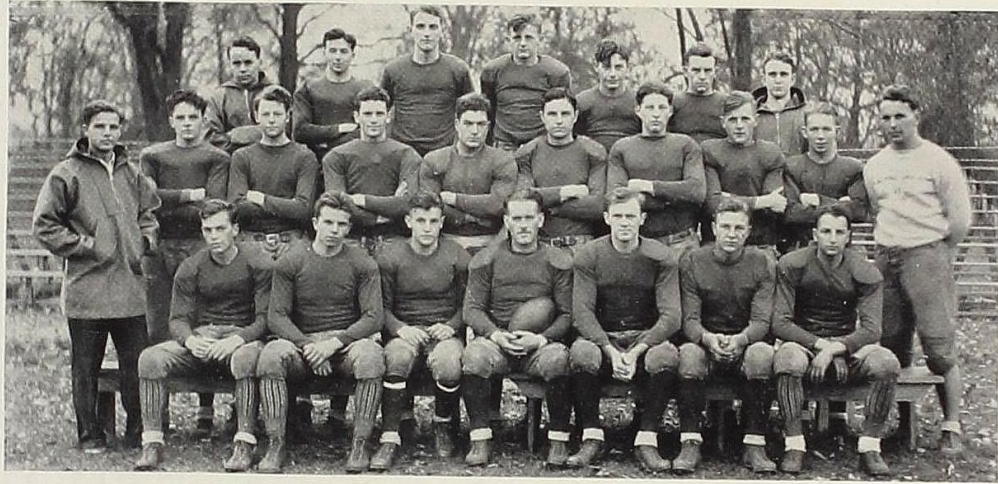
Milton Smith, better known as "Smitty," is the dynamic center of Alma's cheering. He has worked faithfully to develop a real school spirit. Moreover, he has instilled into his two aides a bit of technique that makes them far more capable.

Bob King and Ross Kressler, "Smitty's" two helpers, have mastered the rudiments of the vociferous art of cheer leading, and promise to lead the cheers for the next three years that will bring Alma her share of M. I. A. A. pennants.



## Drum Major

FOR the first time in Alma's history, her band has been led by a drum major who is an expert, who loves the task. With a high step, and a twirling baton, Hugh S. Hodges gave to our famous band a touch of polish. Though but a freshman, Hodges was easily the most skilled leader of any band in the conference, and his baton tricks put to shame the attempts of other drum majors. Anyone who witnessed the band parading before our football games cannot forget the sight of the baton sailing over the cross bar and then finally coming into the drum major's hand on the other side of the goal posts.



## Frosh Football

**T**HE Frosh Football squad, under the eye of Wally Pezet, had a successful season, and developed some mighty fine timber for next year's varsity eleven.

In addition to furnishing some stiff competition for the varsity in practice sessions, the green gridders trimmed Hope and Western State Frosh, lost to Mt. Pleasant Frosh, and tied "Scotty" MacDonald's strong Traverse City High outfit.

Novak, Dawson, and Bushnell, at end, Estes and Smith at tackle, and Foster at guard, gave the opposition plenty to worry about. The "beef trust" tackles kept the field swept clean of anything that looked like touchdown threats. Wilkas looked best in the backfield.

Henshaw, Novak, Estes, Dawson, Bushnell, Wilkas, Morrison, Kahn, Colbeck, Foster, Hubbard, Smith, Miller, Drury, Hayes and Aitken were the men to win numerals. Johnson and Cant also saw some service during the year.



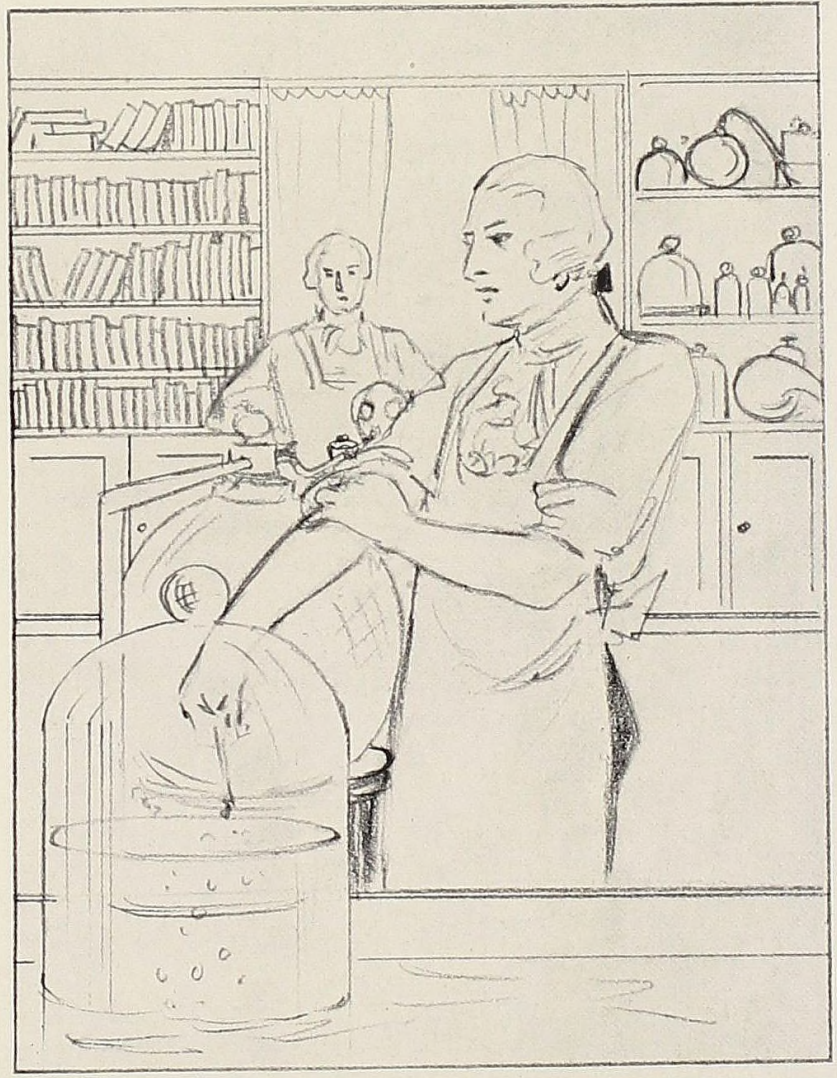
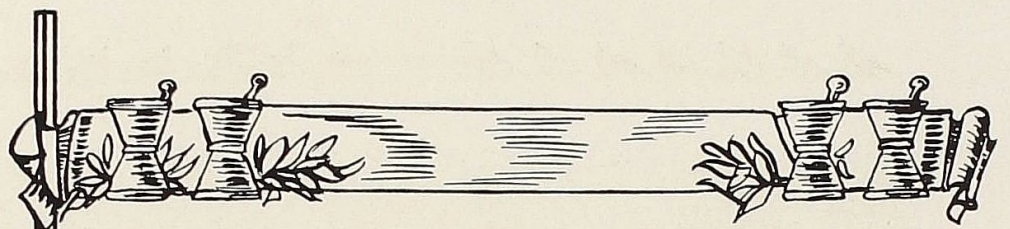
## Frosh Basketball

**D**ESPITE the general business depression, the crop of Frosh Hoopsters was exceptional in both quality and quantity, and what is more, there were students among them. After swinging the axe a half dozen times, Coach Pezet found himself with a real basketball squad composed of Captain Al Mark, the elongated Cook County Cager; Novak and Hubbard, a lengthy pair of Northmen; Bushnell and Baumblatt, a Detroit duo, Campbell, Beach, Bain, and Dawson.

This fast, consistent ball team managed to chalk up five victories against one defeat,—a great record for a great team. They downed the Dutchmen twice, beat Olivet, won from the Lansing State Journal team, and took Hastings High into camp. Olivet's new gym proved to be their undoing, and they took their lone defeat.

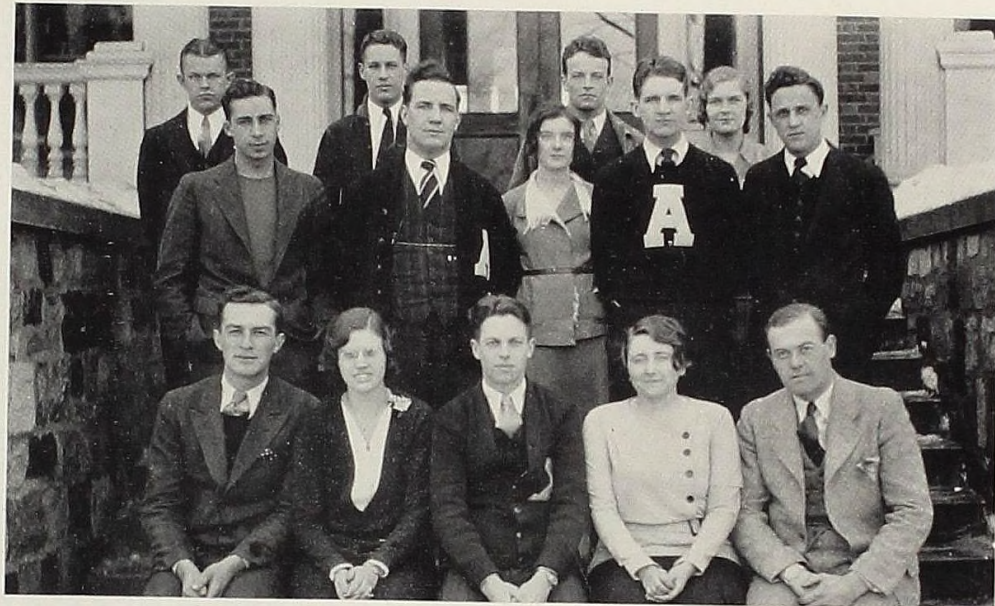
These boys give promise of doing great things for the varsity next year. Bain, Baumblatt, Beach, Campbell, and Captain Mark received their numerals—the others having won theirs in football.





## OUR ACTIVITIES

Lavoisier, the "father of modern chemistry," sounding the death knell of the phlogiston theory by discovering oxygen, 1777.



K. Beach            S. Richter            M. Smith            C. Dakin  
 J. Laman            D. McLellan            M. Cook            A. Crawford            A. Royer  
 F. Klerkoper            D. Noyle            A. Dean            D. Carter            C. Carter  
 Professor R. W. Hamilton, Faculty Adviser

## The Student Council

THE Student Council was organized in 1919 as the contribution of the students to their own government. Its usefulness has grown steadily through the years until now we consider ourselves almost self-governing.

The work of the Council in co-ordinating the life of the student body has been manifested by their activities of the last two years. The Pajama Parade and Campus Day are perhaps the most outstanding examples of their activity. The former is of great interest to both students and townspeople and the latter settles any ideas of campus supremacy which may have developed during the year. The Council has greatly enlivened Homecoming Day by its interest in the parade and its management of the day's activities.

During the year 1929-30 the Council sponsored the innovation known as "Student Chapel" which lived a valiant and glorious life on Monday of each week in the hands of the various student organizations on the campus. Although these enjoyable interludes were very well received they were, by consent of the student body, not resumed this fall.

As a part of the Council program of fostering relations with other institutions the Council has each year sent representatives to the Michigan League of Nations Model assembly. In 1930 they sent three delegates from the Wright Hall Senate to the Women's Government Council in Lansing.

The year's finest material contribution of this group, outside of their governmental functions, is the flagpole which they have erected on the new Bahlke Athletic Field.



## Wright Hall Senate

Dorothy Carter—President  
 Jean Peterson—Vice-President  
 Ernestine Ling—Secretary  
 Ida Spencer—Treasurer

Neva Henricks	Mary Louise Peters
Mary Elden	Marie Cook
Rachel Faude	Alice Donnan
Charlotte Dakin	Mary Wood
Louise Waider	Marjorie Morrison
Cora Lewis	Maxine Lilly

Marjory Spendlove

THIS self-governing body in the midst of our co-ed group holds a very prominent, as well as important position in campus life. When in 1922 the Senate was first organized as a definite aid to the Dean of Women, the high standards of honor and integrity, which we still endeavor to maintain, were set. The election of officers and representatives takes place each year before spring vacation. The entire organization is composed of four girls from each class, members from the three societies and a non-society representative. Every Wright Hall girl participates in the popular vote which determines its president.

A sense of personal responsibility for the standards and traditions of Wright Hall is a virtue which the Senate is persistent in cultivating. The method conducive to this point is that of bringing matters before the assemblage for discussion and courses of action to be voted upon. It goes without saying that in the nine years of its existence this body of women has done much in the solution of problems arising in college life.



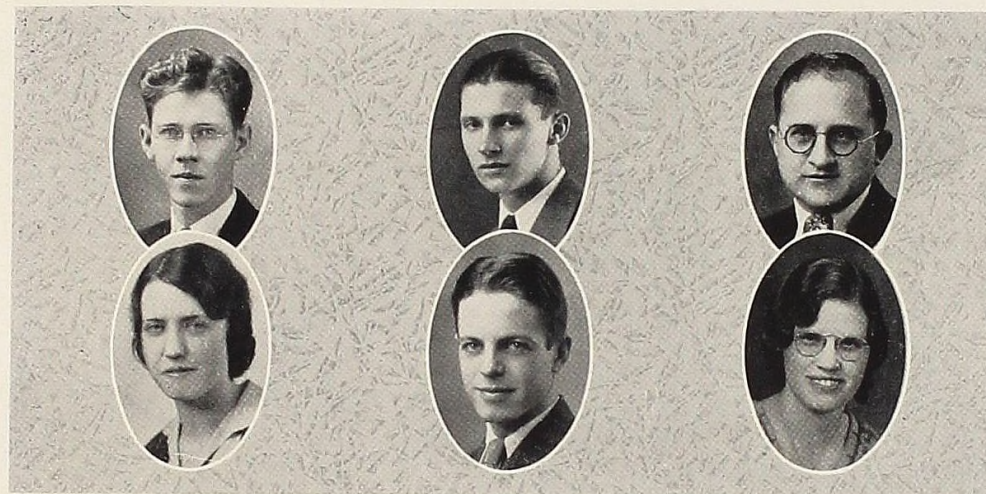
### The Y. W. C. A.

President . . . . . Ernestine Ling  
 Vice-President . . . . . Ida Spencer  
 Secretary . . . . . Mary Elizabeth Forshar  
 Treasurer . . . . . Helen Temple

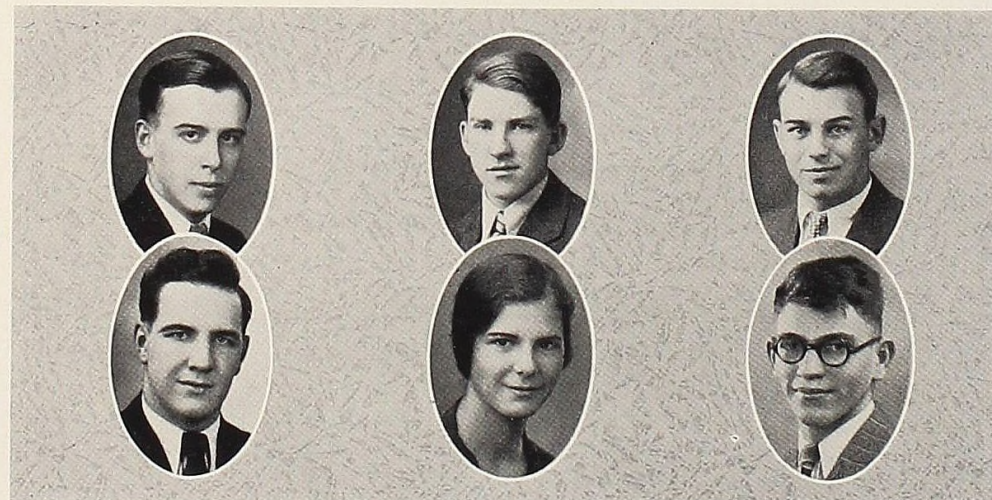
#### CABINET MEMBERS

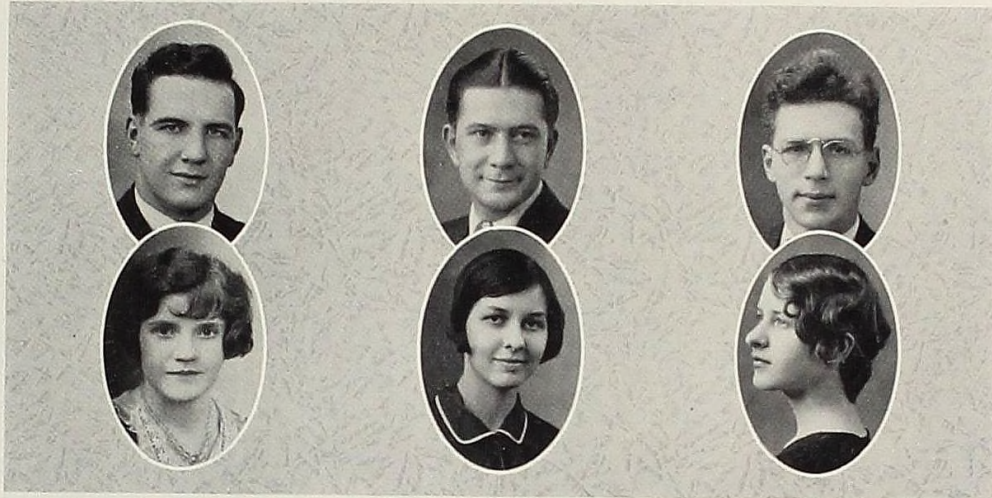
Alice Biondi            Catherine McCuaig  
 Marie Cook            Margaret McMillan  
 Grace Eaton          Ruth Moore  
 Cora Lewis            Grace Teunis

THE opening week of the year is a big one for the Y. W. calendar. With a "big sister" to take her to lunch, to the theater, and to an all-college girls' tea, the new freshman soon becomes acquainted. The annual Kid's Christmas Party, given for the children of the Republic School, with a "real Santy Claus, a bagful of toys, candy canes, and lots of fun," is the most helpful yet most enjoyable project of all. This year, instead of clothing four children, as has been the custom in previous years, the girls clothed twelve. In the spring the main activities of Y. W. include the Easter Breakfast, for which the girls decorate, and the May Dinner. Much help and inspiration has come to the girls through the friendly fellowship of the fortnightly devotional meetings, which have been exceptionally well attended this year.



CONCERNING intelligence, Bulwer said, "The sun will gild the mountain tops before it shines upon the plains." Alma's intellectual "Mountain Tops" are guided with the light of Phi Sigma Pi, the highest scholastic honor which an Alma student can receive. Each year the five highest students in the Junior Class become members of the honor society. The members of the Class of 1931 to win the honor were Amos L. Ruddock, Paul K. Heberlein, Leslie P. Harris, Dorothy Noyle, Alan Dean, and Ida Spencer. This year six members of the Class of 1932 were taken in, and this group has the highest scholastic ranking of any class group ever attaining membership in Phi Sigma Pi. Robert Randel, Barker Brown, Roy Nestle, Mary Elizabeth Forsher (the first co-ed who ever was the lone entrant of her sex in a year), Howard Potter, and C. Douglas McLellan (the first varsity football letter-man to make the society since its inception) are the high-ranking Juniors who have set a new scholastic goal for future classes to aim at.





C. Douglas McLellan  
Second Place Winner  
Claire Wilson  
Second Place Winner

Kenneth Ollis  
College Orator  
Edith Davis  
College Orator

Donald Blackstone  
Third Place Winner  
Sheila Littleton  
Third Place Winner

## College Oratory

INTEREST ran high in the oratorical department of Alma's public speaking activity this year with five men and five women competing in each contest.

Kenneth Ollis, who was Alma's representative last year, again triumphed this year with the oration "The Key To Heaven" with which he won first place in the State semi-finals held at Alma and second place in the final state meet at Mt. Pleasant, to set a new oratorical record for Alma.

Edith Davis led the women with "Our Social I. Q.," and took second place in the semi-finals and also competed in the finals.

C. Douglas McLellan took second in the men's contest with "The Sequence of Life," and Donald Blackstone was third with "Man—The Nautilus." Walter Elder, speaking on "Slaves of Conventionalism," and Fred Schimmer with "The Menace of the Movies," were the other men contestants.

Claire Wilson was second in the women's contest with "The Peoples' Weapon," and Sheila Littleton ranked third with "The Silver Whip." Jean McGarvah spoke on "Lest We Forget," and Inez Passenheim spoke on "The Key to Democracy."

Much of the success of Alma's contestants in the state meets is due to Professor Roy Hamilton who coached them in preparation of these contests.



President, Kermit Fischer  
Business Manager, Gene Tarrant  
Director, Prof. J. W. Ewer  
Ass't. Director, Frank Anderson

ALTOS  
Dudleigh Ruegsegger  
Keith Seale  
Kenneth Rehkopf

CLARINETS  
Horace Boutin  
Fred Biddlecombe  
Alvin Hill  
Carl Johnson

DRUMS  
Eldon Aitken  
Kermit Fischer  
Earle Lyman  
Paul Heberlein

TROMBONES  
Hollis Fales  
Thomas Horton  
Hugh Brenneman

SAXOPHONES  
Walter Elder  
Robert Campbell  
Leonard Graham  
Harold Peterson

BARITONE  
Harry Johnson  
DRUM MAJOR  
Hugh S. Hodges

TRUMPETS  
Walter Moon  
William McCurdy  
Theil Knoertzner  
Earl Sprague  
William Boyd

BASSES  
Carl Baney  
Howard Potter

## Band

THE Alma College Band is completing perhaps the most successful year of its existence. Organized in 1922, it has become one of the most valuable institutions on the campus, through the excellent leadership of Prof. J. W. Ewer and the wonderful spirit of co-operation among the members. It was seen and incidentally heard at all the home football games, and, through the generosity of the student body, at the Kalamazoo game there. It also played at all the home basketball games.

The fourth annual tour was an outstanding success, financially as well as musically. The quartette from the Men's Glee Club accompanied the band on the trip. Concerts were given in Saginaw, Carson City, Belding, Otsego, Lowell, and Allegan.

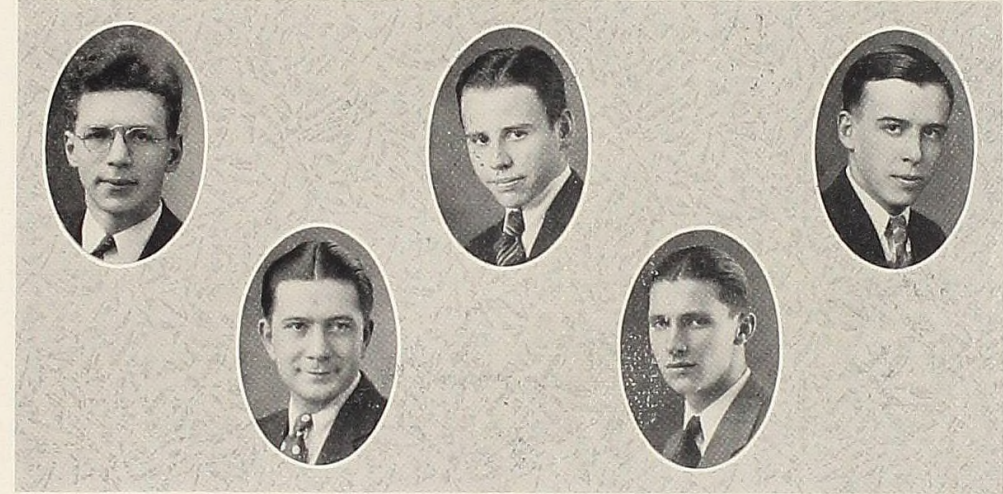


Louise Waider      Jean McGarvah      Nancibel Thorburn      Mildred Angell, Mgr.  
 Claire Wilson      Inez Passenheim      Aileen Waters

### Women's Debate Team

**T**HE women debaters this year completed the third year of intercollegiate competition as a member of the Michigan Women's Debate League. Under the very able management of Miss Mildred Angell, who was a member of the team last year, the team completed a successful season with debates against Hope, Kalamazoo, Ypsilanti, Mt. Pleasant, Albion and Hillsdale, on the question "Resolved that State Medicine be Established."

Louise Waider, a Junior, Nancibel Thorburn, a Sophomore, and Aileen Waters, a Freshman, comprised the affirmative team. The negative squad included Jean McGarvah, a Sophomore, and Inez Passenheim and Claire Wilson, both Freshmen. These debaters, with more opportunities of college competition, presage a highly successful future for Alma College's Women debate teams.



### Men's Debate Team

**H**ANDICAPPED somewhat by the loss of Ralph Harwood who failed to return to school, Alma's men debate teams met with only mediocre success this year, losing three out of five intercollegiate contests. However, the debates which they lost were won by the opposition by only a very narrow margin, while the two victories were overwhelming.

Kenneth Ollis, who was Manager of Oratory and Debate and President of the Michigan Oratorical League, debated on an Alma squad for the last time, and with John De Wilde, a promising freshman, comprised the negative team. Donald Blackstone and Barker Brown, both Juniors, made up the affirmative team. Amos Ruddock, veteran of many a collegiate contest, was a substitute man this year because of the pressure of his other college activities.

The use of a two-man squad was an innovation in the league this year. The state question was: "Resolved that the several states shall enact legislation providing for compulsory unemployment insurance."

The negative team won from Adrian at Alma, lost to Kalamazoo here, and lost to Calvin at Grand Rapids. The affirmative squad defeated Battle Creek on the Alma platform, and lost to Kalamazoo at Kalamazoo.

The fine style of the debate teams was possible only through the untiring efforts of Coach Spencer, who coached the women debaters as well.



## The Girls' Glee Club

FIRST SOPRANOS	SECOND SOPRANOS	ALTOS
D. Carter	K. Campbell	A. Biondi
A. DeKraker	F. Burgett	H. Long
M. Elden	M. Forshar	M. McMillan
W. Hochstetler	C. Lewis	R. Moore
M. Lundbom	E. Nordling	J. Owen
E. MacCurdy	J. Peterson	H. Temple
A. Mileski	H. Vincent	M. Wellwood
D. Prouty		M. Wiley
E. Sprague	Accompanist, J. Turnbull	C. Wilson

THE Girls' Glee Club in the year 1929-30, under the leadership of Mary K. Burt, President, and Jean Peterson, manager, and the excellent direction of Professor J. W. Ewer, completed a most successful year. A tour of the southern part of the state was made with concert engagements, secular or sacred, at Marshall, Hastings, Ionia, Paw Paw, and Saginaw. A colorful feature act, "Around the Gypsy Fire," written and directed by Miss Burt, formed a delightful contrast to the formal concert which composed the first half of the program. A home concert was given at the Strand theater May 7.

This year, the club decided not to take a trip but the home concert was presented as usual. The feature act, perhaps less fantastic yet snappier than former ones, was written and directed by Elsie Sprague and Cora Lewis. The sextette, composed of the Misses Dorothea Prouty, Dorothy Carter, Mary Elden, Kathryn Campbell, Margaret McMillan, director, and Mary Elizabeth Forshar, has filled numerous engagements with varied programs of sacred, secular and popular music.

The officers of the club are: Professor J. W. Ewer, director; Jean Peterson, president; Dorothy Carter, business manager; Mary Elden, assistant manager; and Ann Mileski, secretary.



## The Men's Glee Club

PERSONNEL		
Paul Heberlein	William Goggin	Dudleigh Ruegsegger
Gerald Phillips	Howard Catherman	Stephen Crowell
Perry Gray	Elmer Frost	George Roberts
Clifford Erickson	Dean Lugenbill	Hollis Fales
Harry Wehrly	Lawrence Smith	John Menoch
Alvin Royer	Kenneth Rehkopf	Leonard Graham
Horace Boutin	Jerry Brodebeck	Robert King
Alan Dean	Eugene Tarrant	William Boyd
Henry Block	Robert Campbell	Edward Jacobson

Pianist: Benjamin Leyrer

A PROPOSED tour through cities in the Upper Peninsula had to be abandoned by the Men's Glee Club this year, because of the financial slump following the business depression. The loss of the trip, however, did not affect the club's showing materially, and the home concert eclipsed anything that the male singers have attempted on the campus in previous years. Six singers and a pianist were recruited from this year's freshman class, and have shown great possibilities of increasing the club's effectiveness during the coming years. The club, as usual, presented a very effective chapel program in March, and made several other public appearances in neighboring towns. The club was under the direction of Professor Jesse Ewer who has established for himself an enviable reputation throughout the state as a highly competent musical director.



D. Sprague	G. Norman	N. Sprague	R. Campbell	E. Jacobson
M. Morrison	G. Eaton	A. Girvin	A. Waters	D. McLellan
J. Owen	E. Nordling	M. Moles	M. McMillan	E. Sprague
	A. Mileski	C. Erickson	J. Peterson	

### Upper Peninsula Club

GYM walls hidden behind snow-covered pines, a band almost hot enough to melt their "iceberg pit," and the "sweetest" favors, are the memories which the Northmen left to the campus at the pre-Christmas holiday party, the most successful all-college party of the year.

"Red" Erickson took the organization off a shelf this year, brushed off a five-year accumulation of dust, and as the first president made the club a live organization. The club is truly representative of the U. P., with members from the leading towns all the way from Calumet down to the "Soo."



### The Drama Club

President	Clarence Moore
Vice-President	Anne Mileski
Secretary	Jean McGarvah
Treasurer	Eugene Tarrant
Program Committee Chairman	Amos Ruddock

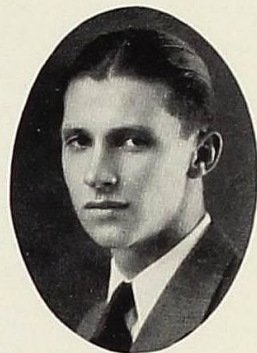
#### MEMBERS

- |                    |                    |                     |
|--------------------|--------------------|---------------------|
| Blackstone, Donald | Logan, Helen       | Prouty, Dorothea    |
| Cook, John         | McGarvah, Jean     | Randels, Robert     |
| Erskine, Frank     | McKenzie, Marian   | Ruddock, Amos       |
| Fischer, Kermit    | McMillan, Margaret | Struble, Leslie     |
| Hill, Janet        | Mileski, Anne      | Tarrant, Eugene     |
| Hosford, Buford    | Moore, Clarence    | Tarrant, Thelma     |
| Hurst, John        | Painter, Mary      | Waters, Aileen      |
| Johnson, William   | Passenheim, Inez   | White, Vera         |
|                    | Potter, Howard     | Woodward, Josephine |

THE Drama Club experienced another very successful year, although there were only thirteen old members who returned to school last fall. Try-outs were held soon after school opened, and on October 31st the first play was produced. This was a three-act mystery drama, "In the Next Room." With this play appeared an entire new set of scenery, which the club purchased this year.

An abundance of good new material was found among the new students. Those who were not in the fall play had a chance to appear before the student body in two one-act plays given in chapel during April. The second full-length play was put on at Commencement time.

For the past few years, the Drama Club has carried on all its activities by itself, without any help in directing from a faculty adviser. It has succeeded remarkably well in giving the students and townspeople some fine dramatic productions.



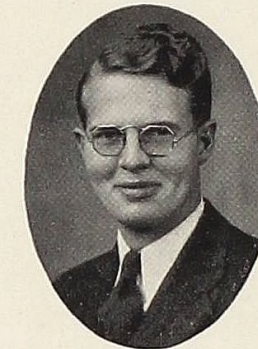
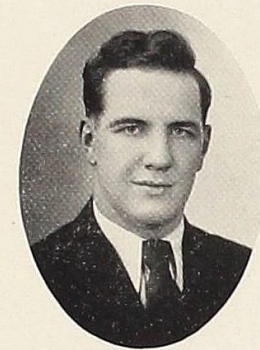
### The Almanian Staff

- AMOS L. RUDDOCK.....*Editor*
- C. DOUGLAS MCLELLAN.....*Associate Editor*
- PAUL K. HEBERLEIN.....*Associate Editor*
- FRED KLERKOPER.....*Associate Editor*
- ELSIE SPRAGUE.....*Campus Editor*
- HELEN LOGAN.....*Wright Hall Editor*
- ALAN DEAN.....*Athletic Editor*
- DONALD BLACKSTONE.....*Feature Editor*
- LESLIE P. HARRIS.....*Business Manager*
- LILLIAN LEYRER.....*Circulation Manager*
- LESTER CAMP.....*Make-up Man*

WITH the editorial pen in the hands of a keen student, vital editorials were the keynote of the weekly student publication this year. Amos Ruddock, with his fine literary style, his fair, frank judgment, and his ready wit, has given the student body the finest paper in years. During the Editor's lengthy illness, Douglas McLellan maintained the editorial policy in a manner that showed a keen interest and considerable experience.

Leslie Harris, with fine business sense, made the publication of the paper possible and increased his reputation for honest, competent application to his work.

The work of all the staff was invaluable in making the paper a real student organ.



### Maroon and Cream

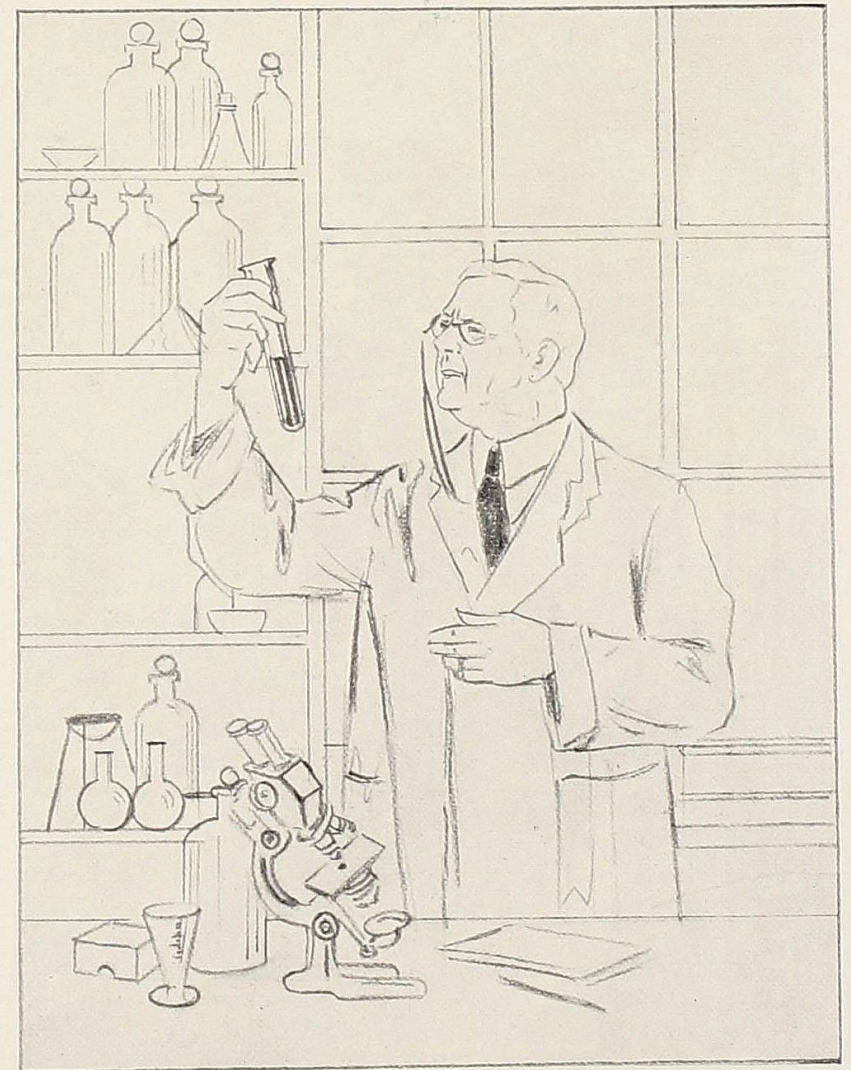
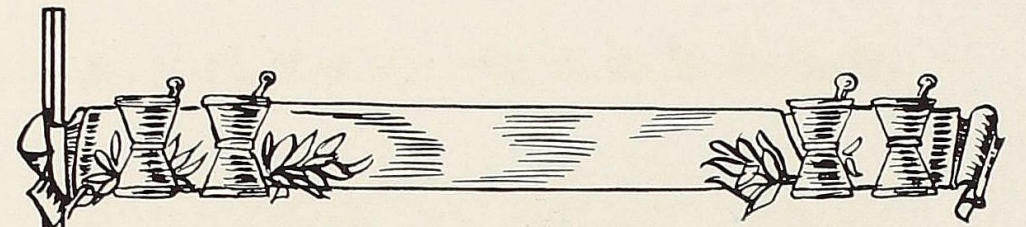
EVERY two years the Junior Class of Alma College sets out to print a book which will be a faithful record of the college activities, and this task falls on a few members of the class. The Class of 1932, which is the largest Junior class in the College's history has endeavored to make this book the best in its history.

Clark B. Jamieson has worked faithfully in the face of a business depression which has made hard work doubly hard, so that the success of this book should be measured not by the financial returns, but by the Business Manager's efforts.

The Staff has been conscientious in its work, and much of the book's success is due to the work of the following members:

- C. DOUGLAS MCLELLAN.....*Editor*
- MARY ELIZABETH FORSHAR.....*Associate Editor*
- HARRY MEANS CROOKS, JR.....*Associate Editor*
- DORTHEA PROUTY.....*Tradition Editor*
- EDWARD GOULD.....*Campus Editor*
- NORENE HELBERG.....*Calendar Editor*
- SHEILA LITTLETON AND LES STRUBLE, '33.....*Art Editors*
- CHARLOTTE DAKIN AND EARLE LYMAN.....*Snap Editors*
- ARTHUR CRAWFORD.....*Athletic Editor*
- HOWARD POTTER.....*Humor Editor*
- MARGARET JOINER.....*Typist*
- CLARK JAMIESON.....*Business Manager*
- JACK COOK.....*Assistant Business Manager*
- E. F. GOULD.....*Assistant Business Manager*





## OUR SOCIETIES

*The Modern Chemist counting the atoms as he seeks a substance that will cure cancer, 1930.*



## Alpha Theta

Carter, Dorothy  
Hurst, Elizabeth  
Ling, Ernestine  
Noyle, Dorothy  
Elden, Mary  
Helberg, Norene  
Logan, Helen  
Long, Helen  
Tarrant, Thelma  
Temple, Helen

Biondi, Alice  
Burget, Freedom  
Cochran, Nancy  
Cook, Marie  
Haines, Irene  
Teunis, Grace  
Wilson, Ellen  
Davis, Edith  
Girvin, Alice  
Hill, Janet

Kennett, Mabel  
Lundbom, Marjorie  
MacCurdy, Evelyn  
Morrison, Marjorie  
Passenheim, Inez  
Stephens, Frances  
Vincent, Helen Louise  
Waters, Aileen  
Wilson, Claire

ALPHA THETA began the year with only twelve members, but with a stern determination on the part of these few to make the society count for something on the campus. Their program began with an all-college party, which was termed a huge success by everyone. This was followed by the hay ride, which was almost a sleigh ride, and the open meeting for the new girls. Pledging increased the society's ranks by sixteen. Other activities included the tea for our patronesses, the birthday party, the all-college St. Patrick's party, and finally the Formal Banquet. The topics which were studied during the year were, "Colleges" and "Current Events." Two of the members were on the debating teams, while three entered the oratorical contest, where two placed first and second.

We feel that the year has, indeed, been worthwhile, and with renewed interest we are looking forward to another, which we hope will be even finer.



## Beta Tau Epsilon

Leslie Harris  
Paul K. Heberlein  
Kenneth Ollis  
Frank Anderson  
Carl Baney  
Fred Biddlecombe  
Louis Braddock  
Roscoe Hileman  
Elmer Kretschmer

Walter Moon  
Jerry Brodebeck  
Albert Calkins  
Clifford McEvers  
Harold Peterson  
Lavon Winterberg  
Alvin Hill  
Winslow Smith

Arthur Moon  
Kenneth Rehkopf  
Donald Bacon  
Albert Hoffman  
Maurice Newell  
John Kingdon  
Frances Mahon  
Murvel Peacock  
Ford Weeks

ALONG time ago (known as the "Dark Ages") there was no Beta Tau Epsilon. One day two students and three gentlemen decided a *real* fraternity was needed on the campus, and B. T. E. was born, springing full grown from the head of Jove (or Venus?). Since then an effort has been made to maintain the same membership ratio: two students to three gentlemen. Today, while B. T. E. boasts (?) of at least two students, the roster may be searched in vain for the others.

Very early was chosen the motto, "Lotsa Lux, no Tux," to which every B. T. E. son and daughter is intensely loyal. Though translation spoils its beauty and gives no clue to the hidden grandeur, this motto in English means "For Books and the Ladies"—the phrase, "For Books," being contributed by the students, and "For the Ladies" by the aforementioned gentlemen.

Thus Beta Tau's rapid growth to power was only natural, and today it can be safely said that no other group of young men more completely misrepresent the fraternity "ideal"—bar the faithful members of Beta Tau Epsilon.

K. O. and K. R.



## Kappa Iota

Mildred Angell  
Catherine McCuaig  
Cora Lewis  
Onilee MacDonald  
Helen Lee  
Katherine Campbell  
Eleanor Curtis  
Madeline Wiley  
Jean Cameron

Mary Wood  
Margaret Wellwood  
Helen Murphy  
Annabell De Kraker  
Marion Day  
Jean Turnbull  
Mary Painter  
Sue Gillam

Jean Peterson  
Janet Owen  
Ann Mileski  
Elsie Sprague  
Rachel Faude  
Margaret McMillan  
Marion McKenzie  
Mary Elizabeth Forshar  
Ruth Moore

**T**HIS year has been a complete success for Kappa Iota socially, scholastically, and even financially. With a splendid group of new pledges, who have been only too willing to co-operate with all the plans, we are still "on top." The program of study has been two-fold, with Liberty as the study for the first semester, and Contemporary Literature for the second.

The social program opened as per custom with the Pirate Party, an annual rushing party for "bold buccaneers," in Wright Hall. Then came a most successful pledging, teas, and the annual Valentine Informal, one of the biggest and peppiest all-college dances on Alma's social calendar. The spring formal, May 16, the house party, and the annual commencement luncheon made a happy ending to such a successful year. In addition to these social activities, Kappa Iota has attained the highest scholarship of any organization on the campus. Pleasant memories, intimate friendship, and sincere loyalty prophesy a still brighter and happier future for Kappa Iota in the coming years.



## Phi Phi Alpha Fraternity

Bacon, R.  
Baldwin, L.  
Balfour, S.  
Blackstone, D.  
Boyd, W.  
Brown, B.  
Bushnell, W.  
Camp, L.  
Cant, R.  
Cates, R.

Conlee, C.  
Crawford, A.  
DeWilde, J.  
Eichhorn, E.  
Fales, H.  
Frost, E.  
Goggin, W.  
Gould, E.  
Graham, L.  
Hirshberg, H.

Hodges, H.  
Hosford, B.  
Horton, T.  
Johnson, W.  
Joyce, A.  
King, R.  
Klerkoper, F.  
Koechlein, J.  
Kressler, R.  
Leadbetter, C.

Leyrer, B.  
Luchini, O.  
MacCurdy, W.  
MacNichol, H.  
Menoch, J.  
Miller, C.  
Nunn, R.  
McLellan, D.  
Nichol, I.  
Oakley, M.

Odle, K.  
Petersen, C.  
Petersen, F.  
Potter, H.  
Randels, R.  
Roberts, G.  
Ruddock, A.  
Seale, K.  
Struble, L.

**A** NEW year, and with it new hopes, ambitions, and accomplishments! We began with lots of new rooms (youmuscomova); new furniture (you'd like it); a new radio (Ben comes on at 12:15); new drapes (have you noticed them?); a new game (chess); new methods of study (very novel); new pledges (the old ones were worn out); a new epidemic (McLellan won by staying in bed the longest); new boys with new girls. The Stag Banquet was a wow. The Christmas Party and the Lincoln Dinner Dance (the biggest in history) were both held in St. Louis (one by necessity and one by custom). The electric clocks were really new (The girls are making their 7:50 classes).  
A.C.



### Philomathean

Flora Lau  
Lillian Leyrer  
Ida Spencer  
Vera White  
Gertrude Martin  
Ora Collier  
Charlotte Dakin

Grace Eaton  
Louise Layman  
Dorothea Prouty  
Marian Smith  
Doris Amsbury  
Kathryn Berry  
Jean McGarvah

Lillian Ogle  
Mary Louise Peters  
Isabelle Sanderson  
Josephine Woodard  
Helen Hummer  
Maxine Lilly  
Dorothy Royce

THE Annual Sunrise Breakfast, Commencement Morning, brought to its close another year of delightful activities for Philomathean. The splendid co-operation of every girl in every event has made possible the success of the usual Japanese Fete and open meeting for the new girls, informal teas in honor of patronesses and new members, a house party, up river suppers and roasts. Especially ought Philo girls be commended for the splendid success of the Annual Christmas Bazaar. Our Spring Formal was the pride of every Philo, and, as we have been assured, of every guest.

But not all the year has been given over to social activities. We have made some interesting discoveries in the lives of "Famous Women," and have also learned something of what has been going on in the world of "Current Events."

Indeed, we have had "of pain, enough to make our joys stand out; of work, a plenty." And now we hand down "Friendship's Sacred Flame" to another and, with hope, even a more successful year. "Philomathean, here's to you!"



### Tau Sigma Gamma

Maryemma Block—President  
Louise Waider—Vice-President  
Lillian Ogle—Secretary  
Frances Wilson—Treasurer

Jean McGarvah  
Isabelle Sanderson

Alice Donnan  
Hazel Bowker

Lillian Leyrer  
Vera White

THIS society originated in November, 1928, as the Travel Study Group. Miss Annette P. Ward, Librarian of the college, had just returned from a trip to Europe, and through her enthusiastic guidance the organization progressed rapidly. Weekly meetings were held, and once a month an interesting feature was the visit at the home of Miss Marjorie MacCurdy, who was a very able speaker upon the subject of her student days in Paris. Appropriate topics were also presented by Miss Banta and Professors Clack and Tyler.

On February 4, 1929, formal organization under the name of Tau Sigma Gamma took place, and the program already mapped out was continued. During the recent year the new society has grown in importance and popularity. It is noted for its delicious lunch room products—hot tea, crispy sandwiches, and home-made candies. It is the ambition of the travelers to visit some spot of scenic interest yearly. This year they are the guests of Miss Vera White, at Mackinac Island, for a week-end party.



## Zeta Sigma

Boutin, Horace  
Byron, Floyd  
Carter, Clyde  
Catherman, Howard  
Coleman, James  
Cook, John  
Crooks, Harry M.  
Crowell, Stephen  
Dean, Alan  
Erickson, Clifford  
Fischer, Kermit  
Grey, Perry  
Gustin, James  
Hurst, John  
Jamieson, Clark

Johnson, H. B.  
Moore, Clarence  
Olmstead, Leslie  
Phillips, Gerald  
Potter, Alden  
Ruegsegger, Dudleigh  
Robbins, Alton  
Royer, Alvin  
Schweinsberg, G. Sheldon  
Schimmer, Fredrick  
Seidel, Clarence  
Sharp, Kendall  
Smith, Milton  
Tarrant, Eugene  
Wehrly, Harry

Williams, Carl  
Williams, Jack

PLEDGES

Aitken, Eldon  
Babion, Waldron  
Bain, Bryant  
Baumblatt, Russell  
Beach, Kellogg  
Campbell, Robert  
Colbeck, John  
Dawson, Gordon  
Drury, Carl  
Estes, Herbert  
Foster, William

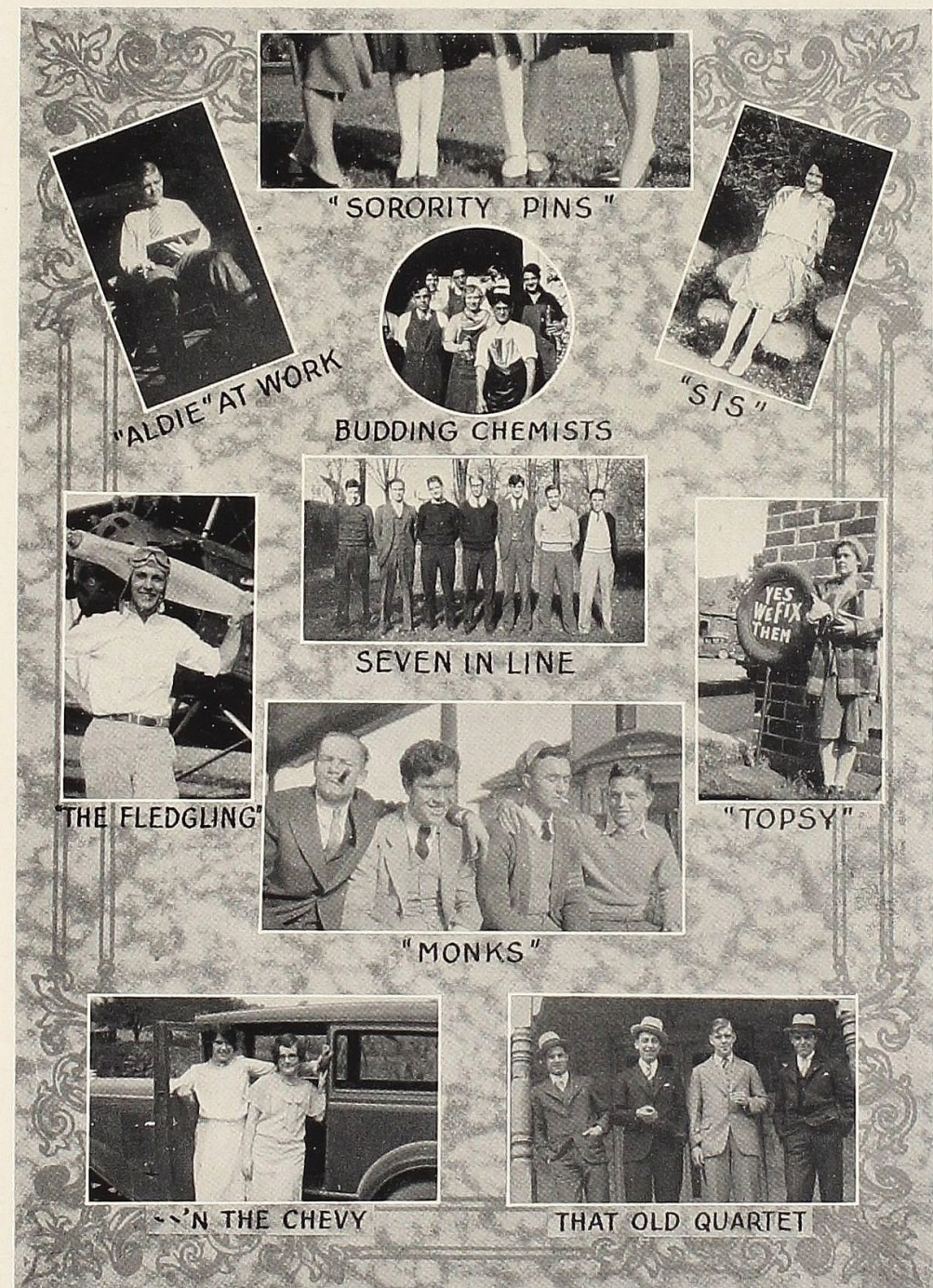
Hayes, Robert  
Hinshaw, Ronald  
Holdship, Keith  
Hubbard, Russell  
Mason, Lorimer  
Miller, Elwin  
Morrison, William  
Novak, Maxwell  
Richter, Sayles  
Smith, Lawrence  
Sprague, Donald  
Sprague, Earl  
Sprague, Nicholas  
Terry, Albert  
Wilkas, Algird

THE oldest society on the campus, which ranks among its alumni a great many of the distinguished graduates of the school, has enjoyed two more happy and successful college years.

The society has been ably represented in all phases of campus activity, the athletic, academic, and forensic divisions having attracted many Zeta Sigma men.

These activities have been supplemented and varied with most delightful social programs. A very successful House Party each year is one of the high lights. The Stag Banquet, held each fall, always brings back a host of alumni. The society's Formal Party has always been one of the school's finest, and those of these years have set lofty marks in the annals of campus historians.

In keeping with the high standards and ideals of our founders we strive each year to improve on performances of previous years and to this end we feel that the new members and pledges are of such stuff as will build in coming years toward nobler manhood.



"SORORITY PINS"



"ALDIE" AT WORK



BUDDING CHEMISTS



"SIS"



SEVEN IN LINE



"THE FLEDGLING"



"TOPSY"



"MONKS"



"IN THE CHEVY"



THAT OLD QUARTET



What a whale of a difference just a few years make!  
 The above pictures have been reclaimed from the heap of forgotten years, and you will find that seventeen of them can be found in another section of this book. Compare them, and see if the years have given sophistication to these freshmen of a few years ago.

## Our Private Life

(Being the Campus Calendar)

**C**OLLEGE! Nothing like it in the world—lucky world! Especially do we hail the first few days of opening. Then a spirit prevails that is seen no other time—even being back at forty acres of Christian atmosphere feels so good it hurts.

New girls, tittering, are seen here and there—shy at first, but casting arched looks about, seeking prey for future ravaging.

Professors here and there, murmuring the flatulent “Glad to see you, er—Mr. er —”

Excited freshmen—their cheeks yet aglow with youth—what illusions they are getting!

Fraternity boys, holding frantic whisperings, still playing in all seriousness the childish game of “Enie meenie, meinie, moe.”

Chuck Miller wanting to take social science—pardon us—history, economics, and nothing else.

The cash register tinkling merrily—a broad smile on Chet’s face.

Old students, new ones. Much effervescent conversation—indefinite and unimportant.

“Oh, hello there!”


—yes, a great life!

### September

- 15-16 Freshman Days—and they come and come and come!
- 17 Reception at the Presbyterian Church. Already “in the ‘fall’ a young man’s fancy —”
- 18 Frosh girls entertain on “Stunt Night”—and ‘twas really clever.
- 19 Frosh girls initiated. You wouldn’t be angry, would you?
- 20 Flag Rush with the Frosh as victors. “Pearly” is back.
- 22 “Kewpie” has a birthday—presents ‘neverything.
- 23 More mail at the Hall—thrills and heart-throbs!
- 26 Sunday—so there is a lot of sleep.
- 29 Bids start for the Alpha Theta dance.
- 30 “Kewpie” and Helen are hard at work arranging dates. Thanks!

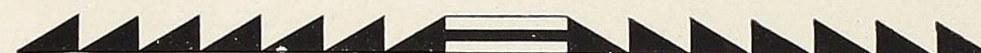
### October

- 1 Erskine refuses a bid from lack of funds. Amos Ruddock elected President of Phi Sigma Pi Honorary Society.
- 2 Wright Hall eats. Thanks a lot, Chuck!
- 3 Alpha Theta party. Queer combinations but people are queer.
- 4 Where were Sheila and Bill about 9:30? Frosh tie Traverse City.
- 5 K. I. Pirate Ship anchors in Wright Hall.

- 
- 6 Rehkopf breaks into the ranks at the Hall.
  - 7 "Fritz" announces his engagement—No, not Helen this time.
  - 8 Officers elected for Maroon and Cream. "Mac" and Clark take the honors.
  - 9 Pajama Parade—Miller, Erskine and Terry have a big time.
  - 10 Student Council Stag Party. At least the girls enjoyed themselves.
  - 11 Philo Fete for the new girls—"Cabbie" and "Libby" were too hilarious.
  - 13 "Bea" Smith is married. Lots of luck and happiness!
  - 14 Sheila is reprimanded for a mere poem.
  - 16 Dr. Bromley speaks in chapel.
  - 17 Alpha Theta Hayride—first snow of the season.
  - 18 Alma-Hope game, 13-6. A lot of old students grace the campus. Welcome back!
  - 19 "True Blue Lou" now lives in our Hall. We hope it lasts.
  - 20 Alice Biondi is with us again.
  - 22 Miss Banta's classes celebrate Virgil's Birthday.
  - 24 Alma Frosh beat Hope. Pep-meeting. Claire represents the girls.
  - 25 Parent's Day. Alma-Hillsdale game, 14-13. Frosh Frolic—best ever!
  - 28 Helen Long turns cook—and what a meal!
  - 31 Drama Club presents "In the Next Room." Gene and "Kewpie" take all the honors.

### November

- 1 Homecoming, with its usual guests and game and dance. Albion-Alma, 27-12.
- 2 Church. We settle down to normal.
- 3 Alpha Theta Open Meeting. Phi smoker and a serenade.
- 4 Believe it or not, all our football men are wearing shoes.
- 5 Oh, "that great big man from the South."
- 7 Pep Meeting. Zeta Open House.
- 8 Mount Pleasant-Alma game, 27-7. "Mac" takes the consequences.
- 10 K. I. Open Meeting. Miss Roberts royally entertains the Alpha Theta girls. Beta Serenade.
- 11 Armistice Day program in chapel. Helen's "Art" appears.
- 12 A son is born to Dr. and Mrs. Kaufmann. Congratulations!
- 13 A big Pep Meeting.
- 15 Kazoo-Alma game, 21-7. Tough luck!
- 17 Zeta Smoker and Serenade. Philo Open Meeting.

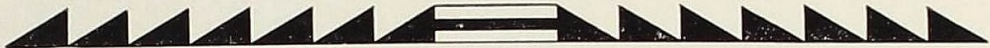
- 
- 19 Pledge Night for the girls. The usual commotion!
  - 20 Pledge Day. "We hope you're happy!" Walter Elder chosen as "Prexy" by International Relations Clubs.
  - 21 Jack Frost operated on in Saginaw.
  - 22 Indoor Football game in Wright Hall—who won! Amos?
  - 24 Alpha Theta and Philo pledge tables and services.
  - 25 Fond farewells are said, for tomorrow spells Home.
  - 26 Vacation begins.

### December

- 1 Back to school. First signs of winter.
- 2 "True love never runs smoothe"—eh, Bert?
- 3 Mr. Monk, a friend of the students, dies.
- 4 Zeta Sigma—Phi Phi Alpha basketball game. Zetas victorious.
- 6 Zeta Sigma Tea and Formal. Nice modernistic clocks!
- 8 Mrs. Hamilton entertains Alpha Theta girls.
- 9 Phi-Beta game. Phis!
- 10 And who said there were "night prowlers" in Wright Hall.
- 11 Zeta-Beta game. Zetas!
- 12 Phi Christmas Party at St. Louis. A "spite date" or something to that effect.
- 13 Philo Fair—a real success.
- 14 A couple mere Freshmen girls tell two upper class women what to do and why.
- 15 Pictures for the Maroon and Cream "going strong" at St. Louis.
- 16 "Back to our childhood days"—Christmas party, with lots of cute boys and girls.
- 18 Upper Peninsula Farewell Party. Claire and "Red" led the Grand March. "Mac" gave us stick candy, too.
- 19 Homeward bound!

### January

- 6 More "gab-fests" and everyone is back.
- 7 Cora, as a barber, takes up her business. Marg and Mary are first in line.
- 8 "Aldie" is feted on his birthday with dinner at Wright Hall.
- 12 Amos is threatened with pneumonia.
- 13 Amos is worse, and we are all worried.
- 14 Oratorical Contest: Edith Davis, first; Clare Wilson, second; Sheila Littleton, third. Mens' Contest: Kenneth Ollis, first; Doug McLellan, second; Donald Blackstone, third.
- 15 Serenade—with different pieces personally dedicated. How about "Sweet Jenny Lee?"
- 16 Senior Benefit Dance.

- 
- 19 Alpha Theta girls initiate.
  - 20 'Twas a cold, cold night—and friends don't recognize us when we are all "dressed up."
  - 21 Coach Crowley of Michigan State speaks in chapel, where we have awarding of letters, sweaters and the like. Alma-Hope game, 44-43.
  - 22 Exams! 'Nuf said!
  - 23 More sleep is lost and more books are found again.
  - 24 Tau Sigma Gammas are still running their Tea Room.
  - 26 Just more and more exams!
  - 27 Will we never finish exams?
  - 28 Some of our dear Faculty lose their good dispositions.
  - 29 They are all over, but do we feel better or worse? Who can decide?

## February

- 2 Tomorrow classes begin.
- 3 They have begun!
- 4 The usual cat appears in Anatomy. Who was that that wasn't a bit hungry?
- 7 Kappa Iota Valentine Party—more fun! Listened to "that Bernie person" again.
- 8 "Eight Unknowns" tear around.
- 10 Alma-Albion game 36-28. Not bad at all!
- 11 Some of the boys entertain.
- 13 All in readiness for the Style Show.
- 14 Phi Formal—and we have real clocks, but we don't have to wind these.
- 18 Alpha Theta Tea this afternoon.
- 18 Alpha Theta Tea this afternoon.  
General Motors Tech-Alma game, 31-36.
- 19 "And did you know that Al was high-point man last night?"  
Kappa-Iota Tea.
- 20 Kazoo-Alma game, 32-26.  
Student-Council dance.
- 21 Sophomore Shuffle, and it was a big, big party. All the "jaboomers" arrive in time.
- 22 Al has flu and we are sorry?
- 23 Washington's Birthday is declared a holiday by the students—snake dance, dance in the Hall, free show. Biggest day in the year!
- 24 "Hundred-yard dash" near the Zeta house—just how did that come out, Jack?
- 26 Junior Class Banquet in Wright Hall with dancing after.


## March

- 2 A "truth session" in the Hall—more "low-down."
- 3 Who said something about "snake's hips."
- 4 Nice radios on Gratiot.
- 5 Style Show—our representative did very well.
- 6 Edith Davis, second, Ken Ollis first in State Oratory semi-finals.
- 7 A spread for Dorothy's guest.
- 8 Rach and France have "foxed" us—just announced their marriage. Good luck and best wishes!
- 9 And we were all pepped up for a big evening.
- 10 You wouldn't stay mad, now would you, Keith?
- 13 Kenneth wins second place in State Oratorical finals at Mt. Pleasant.
- 14 Jimmie and Irene announced their marriage. Congratulations!
- 15 Names are all drawn for the Alpha Theta Party.
- 16 Alpha Theta Birthday Party.  
Amos comes back to the campus again to edit the Almanian.
- 18 Dr. Davis speaks in chapel.  
Secret marriages tabooed by faculty.
- 19 Electric wires are all right in their place—but—
- 20 Alpha Theta party—twelve dances exchanged, and what couples, but 'twas a big, big party.
- 21 Beta Tau Formal—lovely lockets.  
Someone was campussed.
- 22 College Christian Endeavor presents "What Men Live By."
- 23 Gammas are definitely organized.
- 25 Girl's Glee Club Concert—mighty clever!
- 26 The night before we go home—and what a night!
- 27 Spring Vacation, with snow aplenty.

## April

- 6 School again. We miss you so much, Mary.
- 7 Who said hard times? New coats, hats, dresses, knickers, shoes and what nots.
- 8 Golf and more golf!
- 9 Russ Baumblatt gives the Hall a break, with his car.
- 10 New members of Drama Club put on "Mayor and Manicure" in chapel. We found more talent displayed.
- 11 Ann Arbor has Spring Vacation, so we have visitors. Welcome home!
- 12 "Boys will be boys," and mules count too, don't they, Tom?
- 13 And it was a thirteenth, true to form!
- 14 Bridge party, crackers, "Buster" and a big time for all!
- 16 Phi Frosh Smoker for all college freshmen.



- 
- 17 Track team is hard at work.
  - 18 Zeta Sigma Informal dance.
  - 20 "Prexy" speaks in Saginaw.
  - 21 Professor Brumm of the University of Michigan speaks in chapel.
  - 25 Alpha Theta starts the Spring Formals with a dinner-dance at the Park Hotel.  
League of Nations attend meetings in Hillsdale.
  - 28 Frosh publish their Almanian.

### May

- 2 Philo Formal is as nice as ever.
- 5 Spring seems to have its usual effects.
- 9 Juniors give one of the biggest J-Hops ever.
- 16 Kappa Iota Formal at Wright House. Something cleverly different.  
Philo House Party at Crystal.  
Alpha Theta House Party.
- 19 Usual question about campus elections.
- 22 Tau Sigma Gamma House Party.
- 28 One last "spree" before exams begin.

### June

- 1 We realize it is nearly too late to begin to study.
- 2-3-4-5 And how we study for these exams.
- 7 Farewell Communion. Rev. Gelston speaks.  
Baccalaurate. President Crooks delivers the address.
- 11 Senior Class Day.  
Farewell Breakfast at home of the President.
- 12 Alumni Day.  
Presentation of awards in Oratory, Debate and Athletics.  
Faculty-Trustees dinner in the Grove. At last we are in the midst of celebrities.  
Golf Tournament.  
Senior Promenade and Farewell to Buildings.  
Reception at home of President Crooks.
- 13 Commencement Day.  
Professor Gordon Jennings Laing, Dean of the Graduate School, University of Chicago, delivers the address.  
Commencement luncheon at Wright Hall.  
Famous Words . . . Finis.

## Try This

**F**ROM the beginning of time, the man who had something to sell has had to advertise. The cave man who had a little pet dinosaur to dispose of was obliged to cluck out the information to his neighbors, or whittle a batch of hieroglyphics on a nice big rock. Otherwise he was left with a dinosaur on his hands.

Now most of us have improved on the clucking; our hieroglyphics have changed in shape; rocks have been removed from the realm of letters. But the axioms of advertising remain eternally the same: If one sells, some one must buy; and to buy, one must know where to buy. Every commercial proposition rests on these. And the man who doesn't advertise today still has a dinosaur on his hands.

The little side trip that follows has been designated for a purpose. It is mainly to prevent the idea that the academic is all that there is to Alma. Academic Alma and Commercial Alma progress only in proportion to the unselfishness with which they "ride and tie," to the willingness with which they alternately boost and climb.

Thanks to many merchants, we have ridden as far and climbed as high as this Maroon and Cream.

It is their turn now. Find out who they are, and in the future trade with them.

# A Better Alma College

... America is accused of being eager to make everything in America bigger and better. For the last several years much more effort has been expended in making Alma a better college than in making it a bigger college. We think we are achieving. To make it a better college we must be constantly receiving the best students. We invite correspondence from first class high school students.

Address: JAMES E. MITCHELL, Dean, or  
H. M. CROOKS, President

Winslow  
Brothers

... DRUG  
STORE

Always a Friendly Welcome

Opposite  
Strand Theatre

ALMA THEATRE

WHERE THE SCREEN SPEAKS  
PERFECTLY

**LITTLE ROCK LUMBER  
AND COAL COMPANY**

Good Lumber and Good Coal

Home Office Telephone 246  
Cor. of Park Avenue Alma and Perrington

"WHERE SERVICE IS A HABIT"

A GOOD PLACE TO GO FOR  
PHOTOGRAPHS

PHONE 79 FOR APPOINTMENT

COVERT STUDIO  
ST. LOUIS

Capital \$100,000.00

Surplus \$100,000.00

## The First State Bank

"The Bank of Personal Service"

LESTER A. SHARP  
President

CARL H. WASHBURN  
Cashier

WOLVERINE DAIRY CO.

ALMA

### Hansen Motor Transit Co.

Schedule service between Saginaw, Alma, Edmore, Stanton, Greenville, and Grand Rapids. Special rates for party trips. All lives and property insured.

**H. C. HANSEN, Manager**

OFFICE 203 WEST SUPERIOR ST.  
ALMA, MICHIGAN—PHONE 51

When Prof. Clack was back in China he was suffering from a serious illness. A consultation of six physicians was called, but they could not reach an agreement. Three wanted to operate and three wanted to blast.

Dean Mitchell: "The water has rotted the posts under the porch at my house."  
Hosford: "And to think that some people put that stuff in their stomachs."

"Hell Week" at the Beta Tau House:

Hebe: "Here, pledge, take this dollar downtown and get a dime's worth of pigeon's milk and bring back the change."

Pledge (half an hour later): "There isn't any change. Here's the pigeon. The man said you would have to milk it yourself."

## THE DERMA WAY SCHOOL

INVITES YOU

One of Michigan's Greatest Beauty Schools

MARY ANN SARNES

(Sole owner and principal)

1507 Broadway » DETROIT

## W. D. BALTZ CO.

WHERE QUALITY MERCHANDISE IS INEXPENSIVE

105-107-109 W. Superior Street, Alma

High Grade

Dry Goods — Ready To Wear — Millinery

THOMAS A. JAMIESON

REAL ESTATE — INSURANCE  
SMALL FARMS — FACTORY SITES

WAYNE, MICHIGAN

The Badges, Rings,  
Favors and  
Programs

for the Fraternities and  
Sororities at Alma Col-  
lege are furnished by

Burr, Patterson & Auld  
Company

Manufacturing  
Fraternity Jewelers

Athletic Goods  
Text Books

Student Supplies  
Typewriters

COLLEGE SUPPLY STORE

"JUST FOR SPORT"

ALMA

MICHIGAN

J. C. PENNEY CO.

"Where Values are Greater than Price"

317-323 State Street  
ALMA

STRAND THEATRE  
AND  
STRAND SWEET SHOP

C. A. MILLER  
MANAGER

BURGESS DRUG CO.  
ALMA

# Lobdell Aircraft Control Wheels

are Standard Equipment on Leading Aircraft  
Transports, Seaplanes and Amphibians

Manufactured by →

The Lobdell-Emery Manufacturing Company  
ALMA, MICHIGAN

Also Manufacturers of Steering Wheels for Automobiles,  
Trucks and Boats—Bicycle Rims—Herculease  
Folding Chairs.

SENIORS . . . We'll miss you

JUNIORS

SOPHS . . . We appreciate you

FRESHMEN . . . We welcome you

PAT'S DRUG STORE

HAMILTON'S  
CLOTHING  
COMPANY

THE STORE FOR MEN

ALMA  
TRAVERSE CITY  
MICHIGAN

ST. LOUIS THEATRE  
ST. LOUIS, MICHIGAN

COMPLIMENTS  
MRS. ALFRED G. WILSON

OMELIA MILLS - ST. LOUIS

ANTISEPTIC BARBER SHOP

IT PAYS TO LOOK WELL — NIAL BRADFORD, Proprietor

A No. 1 BARBER SHOP

ALMA

TUGERS INDOOR GOLF COURSE

ST. LOUIS, MICHIGAN

CITY NEWS STAND

ALMA, MICHIGAN

SIMI'S CAFE

ALMA, MICHIGAN

RAYCRAFT'S DRUGS — REXALL FOUNTAIN SERVICE

ST. LOUIS, MICHIGAN

MODEL BAKERY

BUTTERNUT BREAD

SAWKINS MUSIC HOUSE

ALMA, MICHIGAN

HOWDY'S HONEY

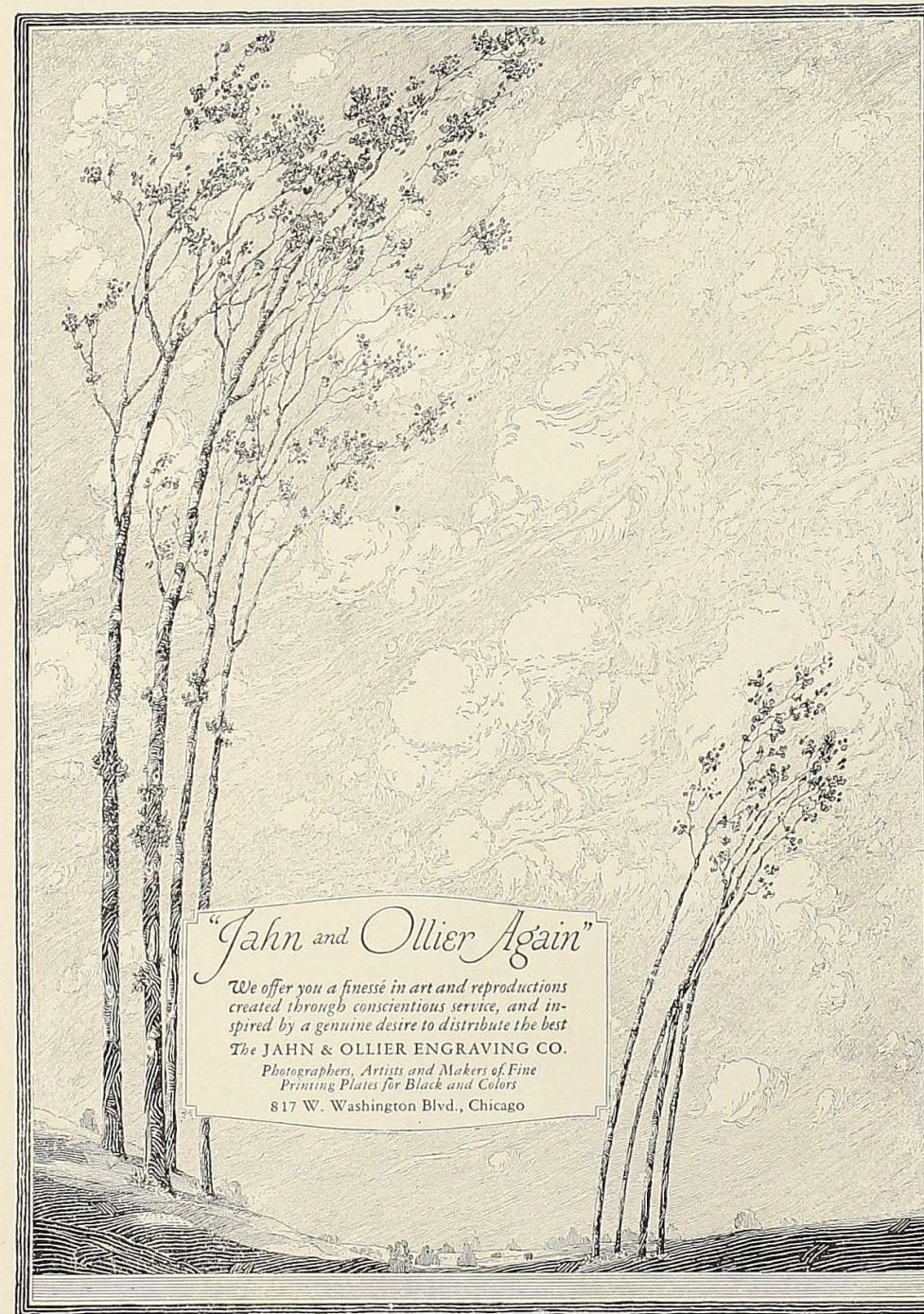
HOWARD POTTER, JR.

CASE OR CARLOAD — COMB HONEY A SPECIALTY

REDMAN BROTHERS - WHOLESALE GROCERS

CRYSTAL LAKE DEVELOPMENT  
COMPANY

CRYSTAL LAKE



*"Jahn and Ollier Again"*

*We offer you a finesse in art and reproductions  
created through conscientious service, and in-  
spired by a genuine desire to distribute the best*

*The JAHN & OLLIER ENGRAVING CO.*

*Photographers, Artists and Makers of Fine  
Printing Plates for Black and Colors  
817 W. Washington Blvd., Chicago*

PARK HOUSE  
ST. LOUIS, MICH.

◆  
Chicken and Steak Dinners  
A Specialty

◆  
Host to  
Alma College Social Gatherings  
JAMES B. SUMNER, MGR.

DR. LAMB

DR. DuBOIS

DR. REMSBERG

DR. GRAHAM

DR. HIGELMIRE

Compliments of

Symons Bros. & Company

Wholesale Grocers

ALMA, MICHIGAN

## "... Builders of School and College Publications"

THAT phrase describes the activities of Heitman-Garand Company.

It means that each year there is great co-ordinated effort toward creating even finer school publications.

It means that the School Staff may anticipate and realize sure, dependable "first aid" ... and "last aid", too ... in the building of a satisfactory annual.

The assistance Heitman-Garand are prepared to offer is not readily obtainable from every printer.

Fertile years devoted to gaining experience and training in building school annuals are of the necessary requisites before genuine assistance can be assured.

» » »

**HEITMAN-GARAND COMPANY**

... BUILDERS OF ...  
SCHOOL and COLLEGE  
PUBLICATIONS

234 WEST LARNED STREET  
DETROIT, MICHIGAN  
Telephone Randolph 3258

AUTOGRAPHS

ALMA COLLEGE LIBRARY  
  
3 3190 00455 0299



