



THE SCOTSMAN 1939

Closed
Collection
LD
131
.A612
1939

Compliments of
Dick & Jeanette Davidson
Zerbell 39-39
Homecoming 1984

Compliments of the Staff

The 1939 Scotsman



Russell Staudacher, Editor-in-Chief
Richard Bendall, Business Manager

The
Nineteen Hundred Thirty Nine

SCOTSMAN

PUBLISHED BY THE
STUDENT BODY OF
ALMA COLLEGE OF
ALMA, MICHIGAN



"Campus, Grove and Jungle Fair"

In Presenting the 1939

Scotsman

Colonel Frank Knox

. . . nationally famous Chicago publisher and benefactor, has been selected as the person for whom this year's Scotsman would be dedicated. Chosen because he is the most famous of our alumni and an active worker yet for our college, Col. Knox presents a picture of tireless energy and boundless enthusiasm. Being one of the world's leading publishers, a top-ranking figure in the national Republican party, a leader in the civic affairs of Chicago takes endless time but still Frank Knox, class of '98, wasn't too busy to head the publicity committee for the contemplated "bigger and better Alma." For this we are all truly grateful. For this we say "Thanks."



COL. FRANK KNOX
CHICAGO

As our theme.

We truly believe that this year we are offering something new in yearbook themes and do so with the hope that it strikes as welcome a response with you as it did with us. Radical in that we dared to divide men's and women's activities and interests we give you the following . . .

The Place

Her World

His World

Their World

ADMINISTRATION

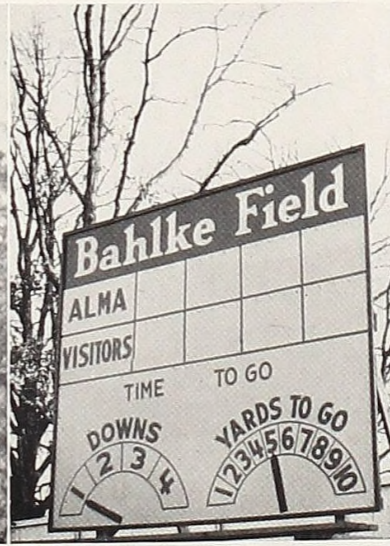
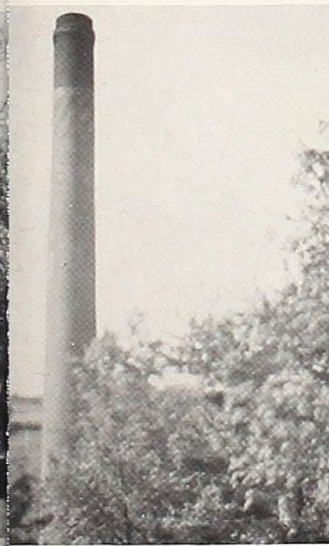
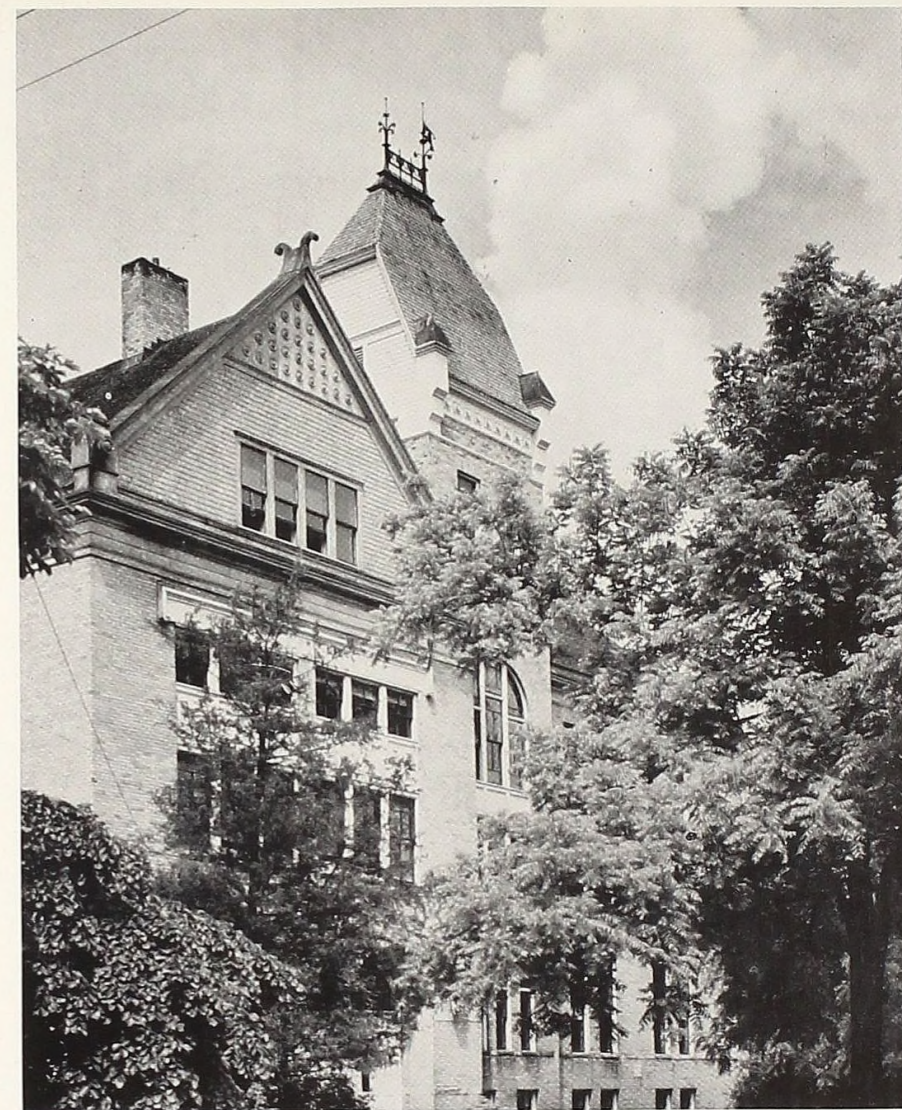
WRIGHT HALL, SENIORS,
CLASSES, ORGANIZATIONS,
ATHLETICS, FEATURES.

SENIORS, CLASSES, FRATERNITIES,
ATHLETICS, FEATURES.

ORGANIZATIONS, FEATURES.



The Place



*"Loyal hearts will cherish
ever
Thoughts of thee throughout
the years"*



PRESIDENT JOHN WIRT DUNNING, D. D.

ADMINISTRATION

SEPTEMBER, 1938, saw the doors of Alma College open to an unprecedented number of students. Not only was the increase of the student body an unusual feature of registration day but the physical improvements around the campus were of such great moment that it was as a new college. All of this was an indication of the "new and greater Alma College" that was promised with the advent of former student Dr. John Wirt Dunning to the president's chair. Although Dr. Dunning came to our campus often last spring the real work of reconstruction was carried on during the summer months with the result that every building on the campus presented a new face to students of the fall. Changes that should have been made years before were brought about, additions were made and the general physical character of the institution was improved under the tireless supervision of the new president.

Most notable of the improvements came to the two dormitories where new floors were laid, new lavatories constructed, recreation rooms built, and rooms refinished throughout.

The kitchen at Wright Hall came under new management and with the change came new equipment until the cooking facilities were equal to those found in the best of hotels and institutions. Upstairs the Dining Room was redecorated in cream and green in addition to new and better seating arrangements.

Hood museum, unused for so many years, was converted into the most modern and scientifically equipped Biology Department, which heretofore had been housed in the Administration building.

To the public eye the biggest change came to Bahlke Field where giant floodlights converted the gridiron for night football. A fence completely encircling the field was built as was a new bleacher seating 1,200, a modern

press box and a refreshment stand. With its additions Alma's athletic field ranks as one of the best in the M. I. A. A.

In the Administration Building the Chapel came in for the greatest amount of change with the addition of new seats, a new floor and an acoustical ceiling. The Physics Laboratory found a new home in the basement while the Education and Sociology departments moved to the third floor. The new and popular Art department was located in the location of the old Biology Laboratory. Walls were done over and new stairs were installed throughout the building.

In line with the physical changes were the faculty additions with five new members being added. To assist with Chemistry came Dr. R. E. Seifert from the University of Illinois. In the History department Henry W. Howe was added while Miss Mae Nelson, Alma graduate of 1936, returned to assist with French and Music.

Two new departments were created with Miss Katherine Ardis heading the Art division and C. Carney Smith, formerly of Flint Northern High School, heading the newly formed Speech department.

S. Byron Straw of the University of Illinois filled in the first semester of this year for Assistant Professor Seaman who was at the University of Illinois for his Ph. D. Mr. Seaman returned in February of this year.



MR. WM. ELLIS
Business Manager



THE PRESIDENT'S HOUSE

ART



KATHERINE ARDIS . . . Instructor in Fine Arts . . . A. B., Western State Teachers College . . . A. M., Columbia University . . . Came to Alma College in 1938.

BIOLOGY

PAUL LaVERNE RICE . . . Professor of Biology and Geology . . . B. S., and M. S., University of Idaho . . . Ph. D., Ohio State University . . . Came to Alma in 1937 . . . Member of Sigma Xi and Alpha Zeta Honorary Societies . . . Author of papers and bulletins on Entomology.



HELEN BAKER ORVIS . . . Instructor in Biology . . . Assistant to Dean of Women and head of Women's Physical Education . . . A. B., Oberlin College . . . M. S., University of Michigan . . . Came to Alma in 1937.

CHEMISTRY

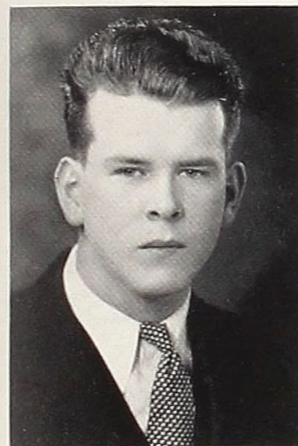
WILFORD E. KAUFMANN . . . Professor of Chemistry . . . A. B., and A. M., degrees at Oberlin College . . . Ph. D., University of Illinois . . . Headed Alma Chemistry department since 1927 . . . Research chemist in many major chemical laboratories.



ROBERT LOUIS EDWIN SEIFERT . . . Instructor in Chemistry and Mathematics . . . A. B., Evansville College . . . A. M., University of Illinois . . . Came to Alma College in 1938.

CLASSICAL LANGUAGE and LITERATURE

WILLIAM MILLARD SEAMAN . . . Assistant Professor in Latin . . . A. B., Wooster . . . A. M., and Ph. D., at University of Illinois . . . Member of Phi Beta Kappa . . . Came to Alma in 1936 . . . Publication in Classical Journal in 1937.



S. BYRON STRAW . . . Instructor in Latin first semester . . . A. B., Wheaton College . . . A. M., University of Illinois . . . Returned to University of Illinois to finish Ph. D.



EDUCATION



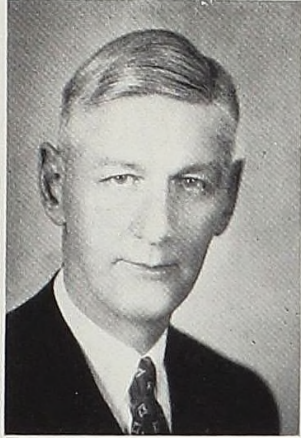
LYDER L. UNSTAD . . . Instructor in Economics . . . A. B., Concordia College . . . A. M., University of Minnesota . . . Akademisk Borgerbrev, University at Oslow, Norway . . . Ph. D., Ohio State University.

SILAS OCHILE ROREM . . . Professor of Education . . . Came to Alma in 1936 . . . A. B., Morningside College . . . A. M., University of Chicago . . . Ph. D., New York University.



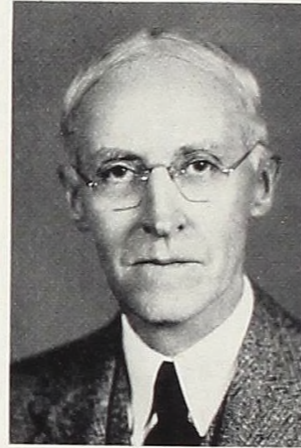
ECONOMICS

ENGLISH LANGUAGE and LITERATURE



ROY WILLIAM HAMILTON . . . Professor of English Language and Literature . . . Secretary of the Faculty . . . A. B., and A. M., degrees at University of Michigan . . . Foreign study at University of Marburg . . . University of Berlin . . . Came to Alma in 1919.

HERMAN WALLACE SPENCER . . . Professor of Rhetoric and Journalism . . . Came to Alma in 1926 . . . A. B., and A. M., Westminster College . . . Contributor to major magazines.



FRENCH



MARGARET E. FOLEY . . . Professor of French . . . A. B., Ohio Wesleyan University . . . A. M., University of Illinois . . . Foreign study at L'Institut de Phonétique, Paris.

MAE LOUISE NELSON . . . Instructor in French and Music . . . B. A., Alma College . . . M. A., University of Michigan . . . Came to Alma in 1938 . . . Composer of numerous musical scores.



GERMAN



THEODORE SCHREIBER . . . Professor of German, coming to Alma in 1933 . . . A. B., University of Dubuque . . . M. A., University of Wisconsin, also Ph. D. . . . Author, contributor, and reviewer of popular German books . . . Author of "Carl Schurz and German Unity."

HISTORY and POLITICAL SCIENCE

JAMES E. MITCHELL . . . Professor of History and Political Science . . . A. B., Alma College . . . A. M., Columbia University . . . Came to Alma in 1897 . . . Study at Cambridge, Oxford, and University of London.



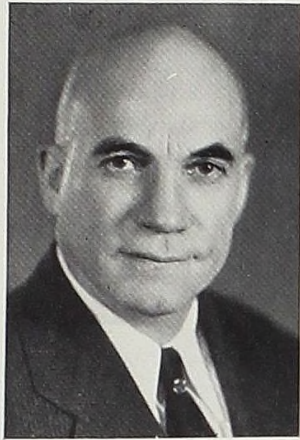
HENRY W. HOWE . . . Instructor in History and Physical Education for Men . . . A. B., Western State Teachers College . . . M. A., University of Michigan . . . Came to Alma in 1938.

LIBRARY METHODS

ANNETTE PERSIS WARD . . . Librarian and Professor of Library Methods . . . A. B., Oberlin . . . A. M., University of Michigan . . . First woman to receive rank of full professor at Alma College . . . Came to Alma in 1919 . . . Listed in "American Women" . . . Also "Who's Who in Library Service."



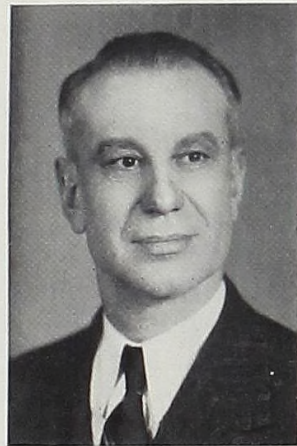
MATHEMATICS and ASTRONOMY



ROBERT WOOD CLACK . . . Professor of Mathematics and Astronomy . . . Came to Alma in 1924 after receiving A. B., and A. M., degrees at Grinnell . . . Registrar of College . . . Famous translator of Chinese poetry . . . President of China Nat'l Amateur Athletic Union, 1919-1921.

MUSIC

GRACE DUNGAN ROBERTS . . . Professor of Piano and Theory . . . Came to Alma in 1909 . . . Graduate, Indianapolis Conservatory of Music . . . Studied with Emiliano Renaud, Thilo Becker, Boris Levenson, and Mr. and Mrs. Josef Lehevinne.



JESS W. EWER . . . Professor of Vocal Music . . . Morningside College . . . A. B., Alma College . . . Private study with Mr. and Mrs. Thomas Garst . . . L. A. Torrens.

PHILOSOPHY and PSYCHOLOGY

GEORGE B. RANDELS . . . Professor of Philosophy . . . A. B., Alma College . . . Ph. D., University of Pennsylvania . . . Foreign study at Universities of Zurich, and Freiburg . . . Former Alma College football player.



PHYSICAL TRAINING



GORDON ADDISON MACDONALD . . . Professor of Physical Education for Men . . . A. B., Alma College . . . Came to Alma in 1936 to take over coaching duties . . . Former M. I. A. A. athlete.



RAYMOND C. DITTO . . . Professor of Physics . . . B. S., Denison University . . . A. M., Princeton University . . . Ohio State University . . . Chicago University . . . Phi Beta Kappa.

RELIGION



CHARLES D. BROKENSQUIRE . . . Professor of Biblical Literature and Religious Education . . . A. B., and A. M., degrees at Marietta College . . . Graduate Princeton Theological Seminary . . . B. D., Princeton University . . . D. D., Alma College.

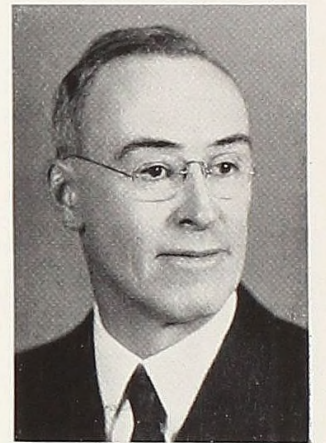
SPEECH



FLORENCE M. STEWARD . . . Professor of Sociology . . . Dean of Women . . . A. B., Cincinnati University . . . A. M., Radcliffe College.

C. CARNEY SMITH . . . Instructor in Public Speech . . . A. B., Western State Teachers College . . . A. M., University of Michigan . . . Came to Alma in 1938.

PHYSICS



SOCIOLOGY



*"Pledging thee a fond devotion,
Guardian of our hopes
and fears."*



*Her
World*



WRIGHT HALL

WRIGHT Hall, a gift of Ammi W. Wright, one of Alma's greatest benefactors, was built in 1902. Wright Hall is the center of Alma College life, for it contains the living quarters for the girls, the college dining-room, and many of the college functions take place in the large reception rooms. Wright Hall also contains the chapter rooms of the four societies of Alma College: Alpha Theta, Kappa Iota, Philomathean, and Pi Sigma Nu.

One of Dr. Dunning's first tasks upon assuming the presidency of Alma College last June was the improvement of the students' living quarters. Wright Hall and Pioneer Hall were completely renovated. The corridors were painted and new flooring was laid; the staircases were repaired; the lighting improved; new furniture and rugs was bought for the rooms. New bathrooms and lavatories of tile and terrazzo were added.

The latest improvement to the dormitory is a large new recreation room, furnished with blue and cream modern leather lounge furniture, indirect lights, large bookcases filled with books donated by the library, a combination radio-phonograph, games and two regulation ping-pong tables. This room has rapidly become the headquarters for the men and women of Alma College.

This year, Mrs. Ida Love Hutton became the new housemother, replacing Miss Leila Houser. Mrs. Hutton is a true housemother, planning parties for the girls, helping them to have better recreational facilities, and guiding their living. Mrs. Hutton is a helper and a counselor for Wright Hall women.

For the first time, Alma College has had a registered nurse in the dormitory. Miss Louise Marshall, who is studying here, is the college nurse, taking charge of all sickness whenever it breaks out. She has complete facilities including a hospital room with full equipment.



Mrs. Hutton





M. ALLEN
L. BLACK

M. BATTLES
J. BOWDEN

J. BIRD
H. DAVIDSON

SENIORS

MARY L. ALLEN

Royal Oak . . . KAPPA IOTA . . .
Almanian Circulation Manager, 4 . . . A
Cappella Choir, 4 . . . Wright Hall Senate
. . . Women's League, 3, 4 . . . Y. W.
C. A.

JEAN R. BIRD

Detroit . . . KAPPA IOTA . . . Kappa
Iota Vice-president, 4 . . . Y. W. C. A.,
Vice-president, 4 . . . A Cappella Choir,
1, 2, 3, 4 . . . Chapel Choir, 2, 3, 4 . . .
Wright Hall Senate . . . Secretary of
Senior Council . . . Drama Club, 3, 4
. . . German Club, 2, 3, 4.

JOYCE E. BOWDEN

Bay City . . . Y. W. C. A.

MARJORIE L. BATTLES

Alma . . . KAPPA IOTA . . . Y. W. C. A.

LOUISE M. BLACK

Detroit . . . KAPPA IOTA . . . Kappa
Iota President, 4 . . . W. A. A., 3, 4 . . .
Student Council, 4 . . . Drama Club, 3, 4
. . . Y. W. C. A.

HELEN J. DAVIDSON

Sandusky . . . ALPHA THETA . . .
Y. W. C. A. . . . Alpha Theta President, 4
. . . Women's League, 1, 2, 3, President, 4
. . . W. A. A., 3 . . . A Cappella Choir,
1, 2, 3, 4 . . . Chapel Choir, 2, 3, 4 . . .
Wright Hall Senate, 2.

DELMA H. DAWSON

Sandusky . . . ALPHA THETA . . .
Alpha Theta President, 4 . . . Y. W. C. A.
Cabinet, 3, 4 . . . Wright Hall Senate, 2
. . . I. R. C., 2 . . . Women's League
. . . Scotsman staff, 3.

KATHRYNE M. LAKE

Alma . . . PHILOMATHEAN . . . Philo-
mathean President, 4 . . . Phi Sigma Pi,
2, 3, 4 . . . Brownell Scholarship, 2.

JULIA A. SCHAAFMSMA

Grand Haven . . . KAPPA IOTA . . . A
Cappella Choir, 1, 2, 3, President, 4 . . .
Kappa Iota President, 4 . . . Vice-presi-
dent of Junior class, 3 . . . Senior class
Secretary . . . Phi Sigma Pi, 3, 4.

CAROLYN E. HAMILTON

Alma . . . KAPPA IOTA . . . I. R. C., 1,
2, 3, 4 . . . Y. W. C. A. . . . Intramural
basketball.

KATHLEEN M. PESEK

Detroit . . . ALPHA THETA . . . Alpha
Theta Vice-president, 4 . . . President of
Y. W. C. A., 4 . . . Wright Hall Senate,
3, Vice-president, 4 . . . A Cappella Choir,
2 . . . Chapel Choir, 2 . . . String En-
semble, 2 . . . Scotsman Staff, 4 . . .
Vice-president of Senior Council.

GLADYS E. TURREL

Croswell . . . PHILOMATHEAN . . .
Wright Hall Senate, 1, 2, 3, 4 . . .
Woman's League, 3, 4 . . . Y. W. C. A.
Cabinet, 4 . . . Senior Council, 4 . . .
Band, 1, 2, 3, 4 . . . Oratory, 1, 2.

D. DAWSON
K. PESEK

C. HAMILTON
J. SCHAAFMSMA

K. LAKE
G. TURREL



SENIORS

SENIORS



J. V. WARD

M. WYNTON

H. MOON

JEANETTE VERPLANCK WARD

Flint . . . ALPHA THETA . . . Wright Hall Senate, 1 . . . Y. W. C. A. . . .
Pre-Medic Club, 1, 2, 3 . . . Drama Club, 1.

MARION E. WYNTON

Detroit . . . KAPPA IOTA . . . Kappa Iota Vice-president, 3 . . . I. R. C., 2,
3, 4 . . . German Club, 3 . . . Drama Club, 3.

HESTER E. MOON

Saginaw . . . KAPPA IOTA . . . Student Council, 1, 2, Vice-president, 4 . . .
Wright Hall Senate, 1, 3, President, 4 . . . Senior Council President, 4 . . . A
Cappella Choir, 1, 2, 3, 4 . . . Drama Club, 2, 3 . . . Scotsman staff, 3, 4 . . .
Intramural basketball . . . W. A. A., 3.



Junior Women:

Top Row, left to right: Betty Reed,
Doris Connor, Amelia Arnold, Con-
stance Hamilton, Virginia Maze,
Florence Telgenhof.

Middle Row: Elizabeth Smith, Elaine
Doubles, Jean Mitchell, Jane Fraker,
Margaret Ann Elliot, Eileen Sulli-
van.

Bottom Row: Louise Johnson, Glad-
ys Glass, DeEtta Baker, Ruth Niles,
Jean Williams, Gene Lewis, Fran-
ces Kaufman.

JUNIORS

FROM the September morning in 1936 when the girls of the Junior class entered Alma College, their days have been crowded with accomplishments, both social and academic. In the political field the class presents Constance Hamilton as its vice-president, Margaret Arnold as secretary, and Francis Kaufman as the female representative on the student council.

In the field of organizations Jane Fraker and Constance Hamilton held leads in the fall presentation of the Drama Club. In the events of last spring Gene Lewis won fame as the Petty picked beauty of the campus while Margaret Arnold won distinction as she was elected Editor of the Almanian, being one of the few women editors in the past decade or so.

Athletically speaking Elizabeth Smith, Jean Williams, Gladys Glass, Margaret Ann Elliot, Ruth Niles and Eileen Sullivan upheld the honor of the third year girls, with Miss Sullivan taking active part in the work of the Almanian and the Scotsman.

Scholastically, Anita Byron, Eleanor Blakely and Mildred Bradfish topped the Juniors with others placing well up on the honor roll.



Sophomore Women:

Top Row, left to right: J. Lee, M. Dreisbach, D. Lindke, D. Ingold, E. Watson, J. English, M. Holmes, B. Dugal.

Bottom Row: B. Lockhart, L. Goldie, F. Brown, B. Thomas, J. Speersta, M. Harrison.

SOPHOMORES

ONLY in their second year of college life, the women of the sophomore class are making their bid for campus supremacy in nearly every field. Serving as class officers are: Virginia Mack, Vice-President; Jeanne Speersta, Secretary; and Mavis Harrison, Student Council.

Active also among sorority affiliations, the girls have entered other fields, chief among which is the field of speech. Katherine Weavers, Saginaw girl, won honors for the second year women with a first place in the local extempore speaking contest held last fall.

Marjory Holmes with an All A average tops those scholastically minded sophs with Jeanette English close on her heels.

Active in women's athletics are: Betty Lockhart, Jane Lee, Mavis Harrison, Lois Goldie, Marie Dreisbach, Alma Ludwick, and Helene Wheeler. Betty Thomas is the athletic standout as she is top-ranking woman tennis player on the campus.

FRESHMEN

INCLUDED among the members of the largest Freshman class ever to enroll at Alma College, are many women whose previous records show them destined for fame upon the local college campus. Less than a month after school opened, a picture of the Freshman Girl's football squad received widespread publication and the members of the class gained national recognition. In the class election, Doris Argent, Alma lass, took over the Vice-President's chair with Sally Reed writing the minutes.

With several of the girls acting on committees the class presented the annual Frosh Frolic which this year attracted the largest attendance in the history of the event.

Debating for women took on an added impetus with the new speech director forming several girls' debate squads. The teams took several trips, winning many of their contests.



Freshmen Women:

Top Row, left to right: E. Wellwood, V. Hardgrove, D. Ziegler, B. Dick, V. Pitcher, E. Prescott, M. Brunner.

Bottom Row: J. Anderson, M. L. Williams, D. Argent, A. Wacker, B. Roth, M. Fleming.



Top Row, left to right: J. Snyder, R. Kolvoord, B. Bahlke, P. Lamb, R. Reed, V. Bernecker, B. Reigelman, F. Cranick.

Middle Row: E. Fisher, F. McDonald, S. Saad, M. Haas, F. Volpel, F. Ingersoll, A. J. Sherman, D. Sigourney.

Bottom Row: M. Knowles, E. Carrier, P. Koepfgen, W. Hicks, M. Goodwyn, B. Reichard, M. Tangalakis, E. Teak.



Top Row, left to right: Doris Argent, Mary Lou Williams, Betty Dick, Verna Bernecker, Dorothy Ziegler, Vera Pitcher, Sally Reed.

Third Row: Betty Dugal, Betty Lockhart, Bertha Roth, Ann Berman, Mary Brunner, Ann Wacker, Virginia Hardgrove.

Second Row: Dorothy Lindke, Virginia Mack, Ruth Niles, Constance Sieg, DeEtta Baker, Florence Telgenhof, Sally Hinckley.

Bottom Row: Gene Lewis, Jeanette Ward, Virginia Maze, Kathleen Pesek, Helen Dawson, Jean Williams, Betty Thomas, Jeanette Davidson, Jean Mitchell.

ALPHA THETA

ALPHA THETA, the first society for women on the Alma College Campus, was organized on March 24, 1890, primarily as a literary group.

As in preceding years, the social life on the campus was introduced by the Alpha Theta Mixer. Their annual rushing party was rewarded by eleven initiates. Their Birthday Party, their St. Patrick's Party, and the grand finale, their Spring Formal, were outstanding social functions of the year.

The girls of Alpha Theta sorority have been unusually active in social and extra-curricular activities on the campus; holding many offices in the women's field of organization, ruling, and sports. This has all been due to the splendid cooperation and enthusiasm shown by the members throughout the college year.

OFFICERS

President
JEANETTE DAVIDSON

Vice-President
HELEN DAWSON

Treasurer
BETTY THOMAS

Recording Secretary
SALLY HINCKLEY

President
HELEN DAWSON

Vice-President
KAY PESEK

Treasurer
BETTY THOMAS

Recording Secretary
VIRGINIA MAZE

A. O. K. I.



Top Row, left to right: Phyllis Koepfgen, Mavis Harrison, Frances Friedrich, Jeanne Speerstra, Blanche Bahlke, Ruth Wille.

Third row: Helene Wheeler, Catherine Conger, Carra Jones, Frances Kaufman, Jane Fraker, Eleanor Blakeley, Mary Goodwyn.

Second Row: Anita Byron, Eileen Sullivan, Margaret Ann Elliot, Hester Moon, Mary Allen, Louise Johnson, Elizabeth Dougherty.

Bottom Row: Louise Black, Betty Hamilton, Katherine Weavers, Constance Hamilton, Judy Schaafsma, Jean Bird, Lois Goldie, Marian Wynton.

KAPPA IOTA

IN 1921, Kappa Iota Literary Society was founded by Dean Elizabeth M. Roberts. Kappa Iota, which was the third society established on the campus, has three definite purposes: to inspire higher ideals, to promote an interest in all forms of literature and to further the social activities of Alma College.

Members of this group are found in every activity on the Alma campus with the basketball squad taking the inter-sorority championship.

The first event sponsored by Kappa Iota this year was a costume party for the new women—a Pirate Party. A Homecoming Banquet was held in the Rotary Room of the Wright Hotel. Kappa Iota's Initiation dinner was the first such affair given in the new recreation room of Wright Hall. In March, Kappa Iota sponsored an all-college, girl-bid party. This "Varsity Swing" was the most successful informal party of the year. In May the Kappa Iota summer formal Dinner Dance was given at the Midland Country Club. During the year, teas, dinners, and informal private parties were given for the members and patronesses.

OFFICERS

President
LOUISE BLACK

Vice-President
FRANCIS KAUFMAN

Recording Secretary
ANITA BYRON

Corresponding Secretary
JEAN BIRD

Treasurer
CONSTANCE HAMILTON

President
JULIA SCHAAFSMA

Vice-President
JEAN BIRD

Recording Secretary
LOIS GOLDIE

Corresponding Secretary
KATHERINE WEAVERS

Treasurer
GERTRUDE BRONSON

OFFICERS

President
KATHRYNE LAKE

Vice-President
GLADYS TURREL

Secretary
BETTY REED

Treasurer
JEANETTE ENGLISH

President
KATHRYNE LAKE

Vice-President
MARJORIE HOLMES

Secretary
DORIS CONNOR

Treasurer
JEANETTE ENGLISH

PHILOMATHEAN

PHILOMATHEAN was founded on the Alma College campus on November 10, 1909, as a literary society. It was within the past ten years that the group have called themselves a sorority and in this capacity they have been actively functioning ever since.

They started their year with their annual rushing party after which they followed with the winter girl-bid party. The "Winter Lodge" was well attended and ranked as a highlight of the first term social season. About the middle of December, the group sponsored the annual "Phil Fair" at which time articles are offered for sale with the group using the money received for charitable purposes.

At Eastertime they sponsored their spring girl-bid and followed it up with the highlight of the sorority's year, the annual dinner-dance at the Midland Country Club.

Philomathean also won the scholarship trophy, a yearly award given to the sorority by Dean Steward who maintains the highest scholastic average.

Top Row, left to right: Eileen Carrier, Betty Reed, Ruth Reed, Alfruda Bell.

Third Row: Florence McDonald, Anna Jean Sherman, Florence Brown, Marjorie Sutton, Frances Cranick, Faythe Ingersoll.

Second Row: Shirley Saad, Ruth Kolvoord, Jane Anderson, Bernice Gould, Beverly Reigleman, Dorothy Harper.

Bottom Row: Gladys Turrel, Elaine Doubles, Marjorie Holmes, Kathryne Lake, Doris Connor, Jeannette English, Shirley Lahaie.



WRIGHT
HALL
SENATE

Top Row, left to right: Virginia Maze, Betty Thomas, Mavis Harrison.

Middle Row: Alfruda Bell, Marie Dreisbach, Elizabeth Smith.

Bottom Row: Gladys Turrel, Mary Allen, Hester Moon, Kathleen Pesek, Frances Kaufman.

ACTING as officers for the Senate during the present year were Hester Moon, president; Kay Pesek, vice-president; Mary Allen, secretary. The Senate is the governing body for girls living in Wright Hall and this body creates and enforces all the rules for the girls. The body was organized in 1922 and it consists of a president elected by the girls in the Hall plus one representative from each sorority and an independent representative from each of the four classes. By request of the faculty, the Senate will act with the Student Council upon matters of importance. Such was the case several times this past year.

SENIOR
COUNCIL



THE Senior Council is the body for governing the senior girls and consists of the President of the Senate plus a member from each sorority and one independent girl. These members are chosen by the Dean of Women and the Senate President.

Left to right: Gladys Turrel, Hester Moon, Kathleen Pesek, Jean Bird.

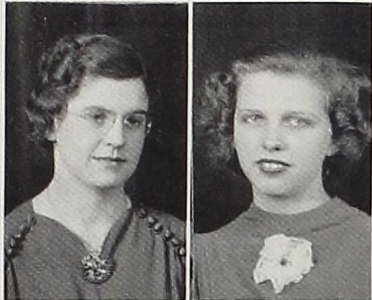


Y. W. C. A.

HEADED by Kathleen Pesek, President, and Jean Bird, Vice-President, the Y. W. C. A. is an organization which includes all the girls living in Wright Hall and any of those from town who wish to join. The Y. W. C. A. assigns a "big sister," the first week of school in September, to each freshman girl who acquaints her with College people and customs.

The officers of the organization are chosen by their predecessors, with the exception of the president and vice-president who are elected by Wright Hall girls.

Each year, twelve small girls are completely outfitted and treated to a dinner at Wright Hall during Christmas time. Following the dinner, other children are brought in and gifts are given to all. The Easter Breakfast, given by the group, is annually attended by many college and town people.



Top Row: Kathleen Pesek, Jean Bird.

Middle Row: Gladys Turrel, DeEtta Baker.

Bottom Row: Anita Byron, Marjorie Holmes.



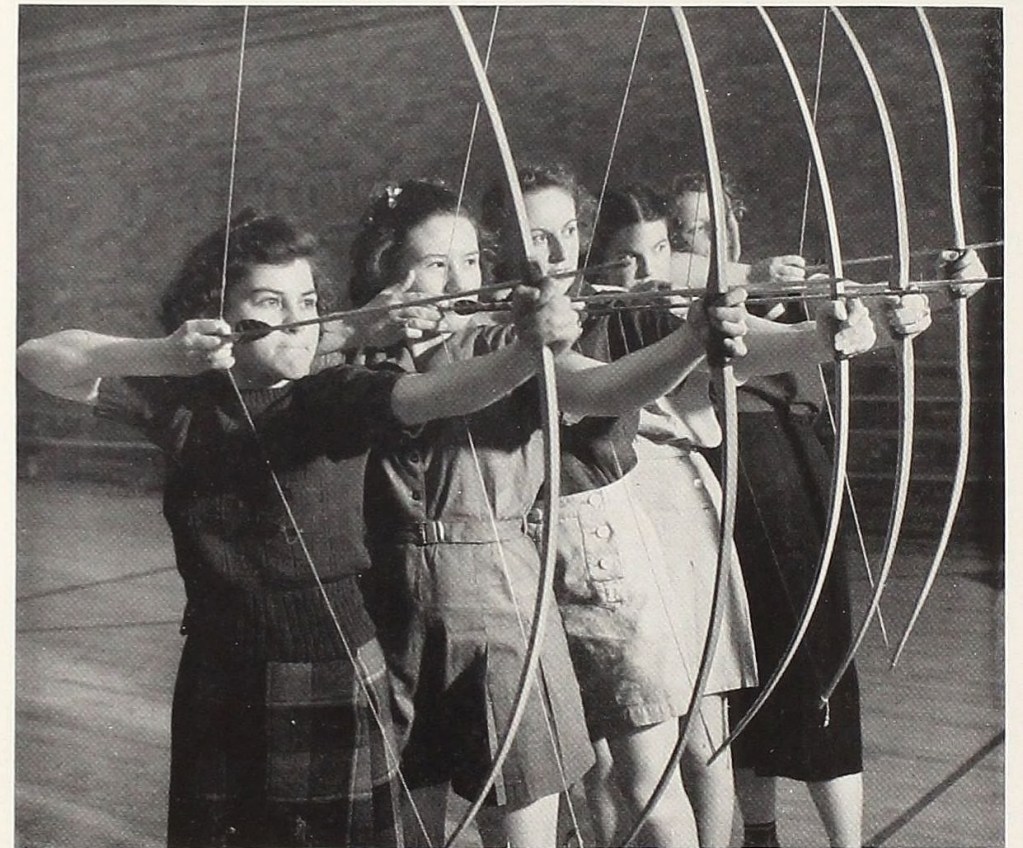
Left to right: Eileen Sullivan, Gladys Turrel, Jeanette Davidson, Ruth Niles, Mary Allen.

WOMAN'S LEAGUE

THE Woman's League, inter-sorority council consisting of two members from each sorority on the campus, was organized in 1932 with the purpose of controlling membership to the sororities, overseeing rushing, establishing friendly relations, and settling disputes that may rise among the various women society groups.

This year, due to the increase of women on the campus, the League sponsored, in collaboration with the sororities, the formation of a new sorority which will begin its rushing and pledging in the fall of 1939. The name of the new sorority is Pi Sigma Nu.

The League's annual girl-bid formal was the continued great success of former years.



Girl's Athletics

WOMAN'S ATHLETIC ASSOCIATION



Top Row, left to right: Louise Black, Constance Hamilton, Betty Thomas, Jeanne Speerstra, Mavis Harrison.
Bottom Row: Anita Byron, Gladys Glass, Eleanor Blakeley, Lois Goldie, Marie Dreisbach, Elizabeth Smith.

THE Women's Athletic Association of Alma College was founded in February, 1938, by Miss Helen Orvis, Physical Education Director for women. Its purpose was to give girls' athletics more organization, prestige and strength. To gain membership, a girl must gain 300 points by participation in sports. When a girl has earned the necessary points she is awarded a sports letter "A." Points are given for participation in intramural sports, regular attendance in gym classes, hiking, cycling, roller skating, horseback riding, skiing, tennis, managing sports, and for serving upon an intercollegiate team.

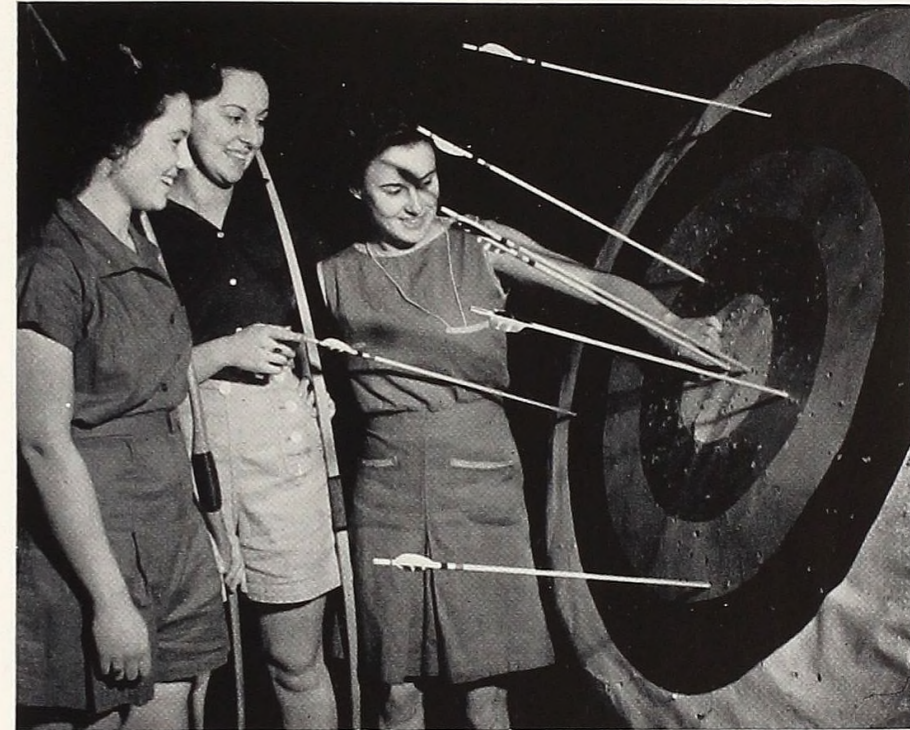
The first W. A. A. banquet was held last year and the first letters which had been won were presented. The original letter winners were Grace Byron, Mary Louise Schlunt, Beatrice Brooks, Louise Black, Gladys Glass and Jeanne Speerstra. Leora Wheatley and Betty Thomas won letters for tennis with Leora winning the singles championship of the M. I. A. A. With Betty, she teamed to win the doubles title.



OFFICERS

President, BETTY THOMAS
Vice-President, MAVIS HARRISON

Secretary, LOIS GOLDIE
Treasurer, CONSTANCE HAMILTON



This year there are five new letterwinners: Anita Byron, Eleanor Blakeley, Betty Smith, Mavis Harrison and Marie Dreisbach. Jeanne Speerstra is high point girl with over 500 points.

Through the W. A. A., three new sports were introduced this year for the first time at Alma: Badminton, Archery and Ping-Pong. The W. A. A. sponsored an inter-sorority basketball tourney which was won by Kappa Iota. They also sponsored a Badminton and Ping-Pong tournament. A trophy was awarded the basketball winner and medals were awarded the ping-pong champs.

Since the formation of the Women's Athletic Association, the popularity of women's sports at Alma College has increased two hundred percent.

Working towards the development of the minds and bodies of Alma College women, towards the formation of ideals of good sportsmanship, towards the creation of new interests, the W. A. A. is one of the college's finest organizations.

Best Dressed Girl . . .



KATHLEEN PESEK

White fur scuff slippers and Vogue's dress of the month . . . greyhounds . . . A Bientôt . . . green orchids against white chiffon . . . furs by Gunther.

. . . Most Popular Girl



JEANETTE DAVIDSON

Lavender and yellow Japanese Iris . . . West Point's June Day Queen . . . Ravel's Bolero . . . sunlight on a birch tree . . . marquisette printed with tiny nose-gays.

Done Most for College



HESTER MOON

Ivory statuettes . . . charm bracelets with tinkling bells . . . minuets and samplers . . . glamor and giggles . . . Yardley's Lavender . . . camellias on black velvet.

. . . Most Versatile Girl



BETTY THOMAS

Sunflowers beside a picket fence . . . salt water taffy . . . tennis courts and letter sweaters . . . Tweed . . . opals set in yellow gold . . . the girl next door.

Most Likely to Succeed . . .



JULIA SCHAAFSMA

White monogrammed linen handkerchiefs . . .
 Brahms and Chopin . . . Cartier's turquoise rings
 . . . basketballs swishing through the basket . . .
 British brogues and ascot scarves.

National and International Fame

FROM the sunny shores of California to the rock-bound coasts of Maine, and from Florida's fruit orchards to Oregon's tall timbers, Alma College's pretty girl football team made headlines and bylines in metropolitan papers. By the airwaves, too, the football talents of Alma's lassies were discussed. The year 1938 saw the rise of the first girls' football team when eleven freshmen girls donned helmets and moleskins to show their loyalty to dear old Alma, by issuing a challenge to any team in the country, to do battle in the "Beauty Bowl." Sacramento Junior College, which represented itself as having the first



Left to right: Verna Bernecker, Marion Hass, Carra Jones, Effie Prescott, Muriel Wert, Martha Knowles, Vera Pitcher, Mary Goodwyn, Sally Reed, Dorothy Ziegler, and Ann Wacker.

and also the prettiest team, was wired a challenge by the Alma girls, but distance proved an obstacle and satisfactory dates could not be arranged for the Powder Puff battle.

The team received both favorable and unfavorable comments. Columnists in Michigan State's paper seemed more up-set over the incident than any of the others. They wrote "—a bunch of slap-happy stunners from Dormitory Six with more beauty than brains suddenly get the brilliant idea of seizing a pink-ribboned pigskin and dying for dear old Alma. I want a girl who looks appealing in an evening dress and not like a female boilermaker." Pictures and stories recording Alma's bid to beauty were found in papers from nearly every state in the union, and one was traced to Italy.

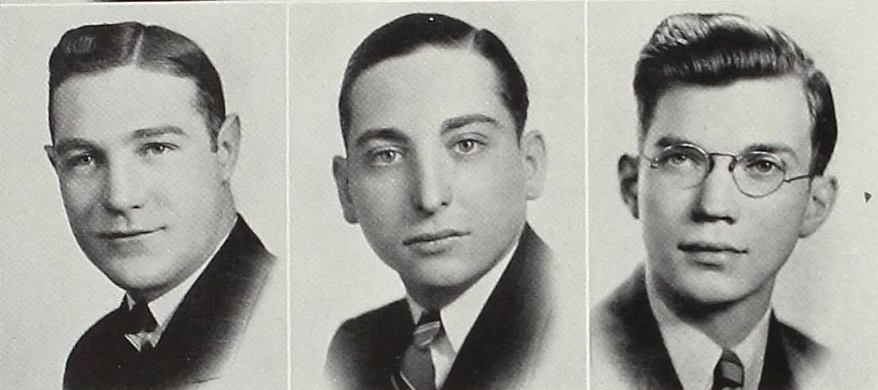
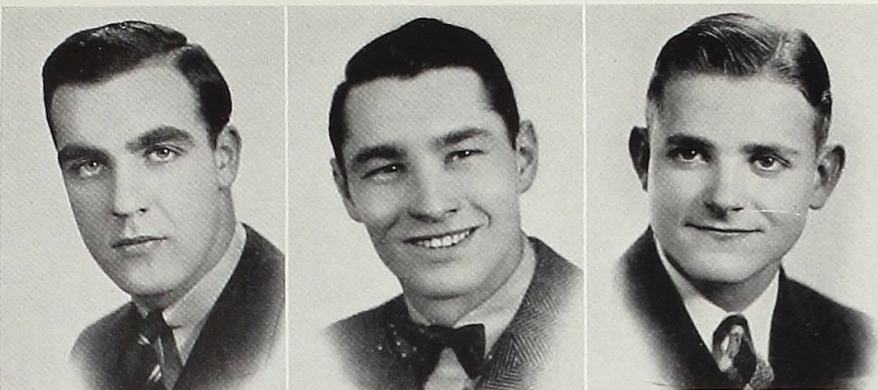
Alma claimed and still lays claim to the prettiest girls' football team in the nation.

His

World



*"Sons and daughters
ever faithful
Hail thee one beyond compare"*



R. ADAMS
R. BINGHAM

W. BAINBRIDGE
P. CICINELLI

R. BENDALL
R. W. CLACK

SENIORS

ROBERT ADAMS
Fairgrove . . . PHI PHI ALPHA . . . Football, 1, 2, 3, 4 . . . Basketball, 1, 2, 3, 4 . . . Track, 1, 2, 3 . . . Golf 2, 3 . . . Boxing, 2, 3.

RICHARD C. BENDALL
Bay City . . . ZETA SIGMA . . . Varsity football, 3, 4 . . . A Cappella and Chapel Choirs, 3, 4 . . . Co-editor of Scotsman, 3 . . . Business Manager of Scotsman, 4 . . . Pre-Medic Club . . . I. R. C. . . . Band, 3 . . . Orchestra, 3 . . . Zeta Sigma secretary, 3, 4.

PETER F. CICINELLI
Merrill . . . PHI PHI ALPHA . . . Drama Club, 1, 2, 3, 4 . . . Intercollegiate debate team, 4 . . . Student Council . . . Varsity basketball, 2, 3 . . . Varsity track, 2, 3, 4.

WILLIAM C. BAINBRIDGE
Alma . . . ZETA SIGMA . . . Intramural basketball, 1, 2, 3, 4 (Captain) . . . Zeta Sigma secretary, 3 . . . J Hop Chairman, 3.

HERBERT R. BINGHAM
Alpena . . . PHI PHI ALPHA associate . . . Football, 4 . . . All Intramural basketball squad, 4.

R. W. DOUGLAS CLACK
Alma . . . ZETA SIGMA . . . Phi Sigma Pi, 2, 3, President 4 . . . I. R. C. 1, 2, 3, President 4 . . . Silliman scholarship, 2.

CHESTER C. CURRIE
Manistique . . . ZETA SIGMA . . . A Cappella Choir, 2 . . . Zeta Sigma treasurer, 4 . . . secretary, 3 . . . I. R. C., 2, 3 . . . Student Council, 2 . . . Inter-Fraternity Council, 4 . . . Intramural basketball, 1, 2, 3, 4 . . . Inter-Fraternity softball, 1, 2, 3, 4.

JOHN W. DUNNETTE JR.
Grand Rapids . . . PHI PHI ALPHA . . . Band, 1, 2, 3, 4 . . . Student Council treasurer, 3 . . . Swipes Force 2, 3, 4 . . . Intramural basketball, 1, 2, 3, 4.

DONALD O. FEICHTENBINER
Ithaca . . . PHI PHI ALPHA.

ROBERT DEVANEY
Saginaw . . . PHI PHI ALPHA . . . Football, 1, 2, 3, 4 (Captain) . . . All M. I. A. A. end, 3 . . . Track, 1, 2, 3, 4 . . . Varsity basketball, 1 . . . President of Athletic Board of Control, 4 . . . Swipes Force, 3, 4 . . . Hall of Fame, 3.

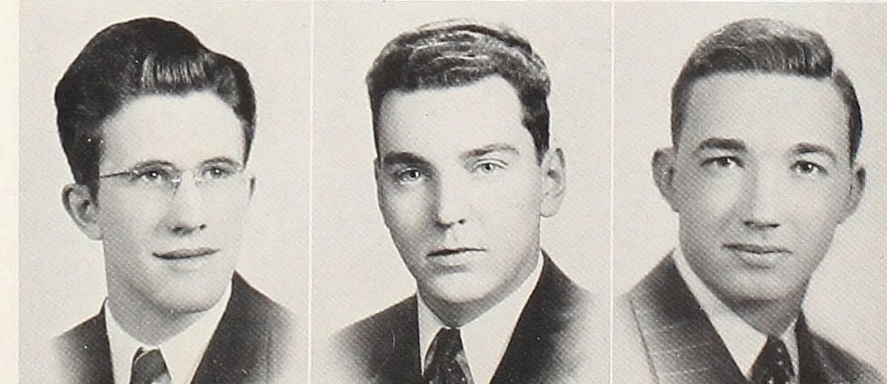
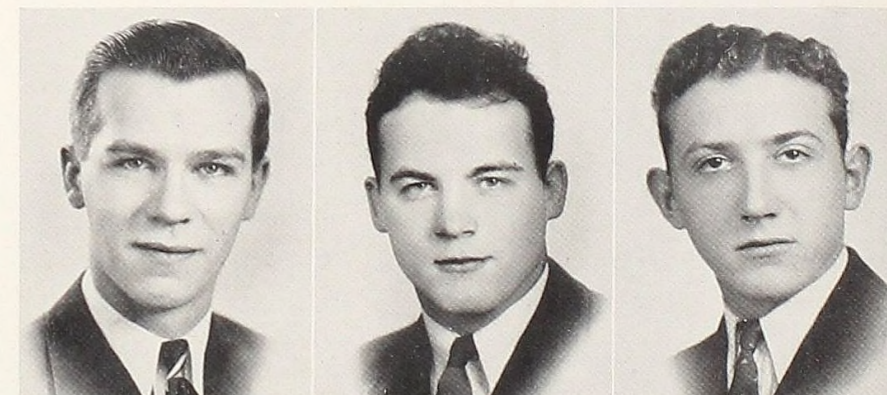
CARL W. ELDER
Alma . . . PHI PHI ALPHA . . . Inter-Fraternity Council, 4 . . . Scouting . . . Athletic Trainer and Equipment Manager . . . Boxing, 2, 3, 4 . . . Football, 1, 2, 3, 4 . . . Basketball, 2, 3, 4 . . . Track, 1, 2, 3, 4.

WILLIAM M. FOLLIS
Lansing . . . ZETA SIGMA . . . Football, 3, 4 . . . Pioneer Hall Monitor, 3, 4 . . . Pre-Medic Club, 3, 4 . . . I. R. C., 4 . . . German Club president, 4.

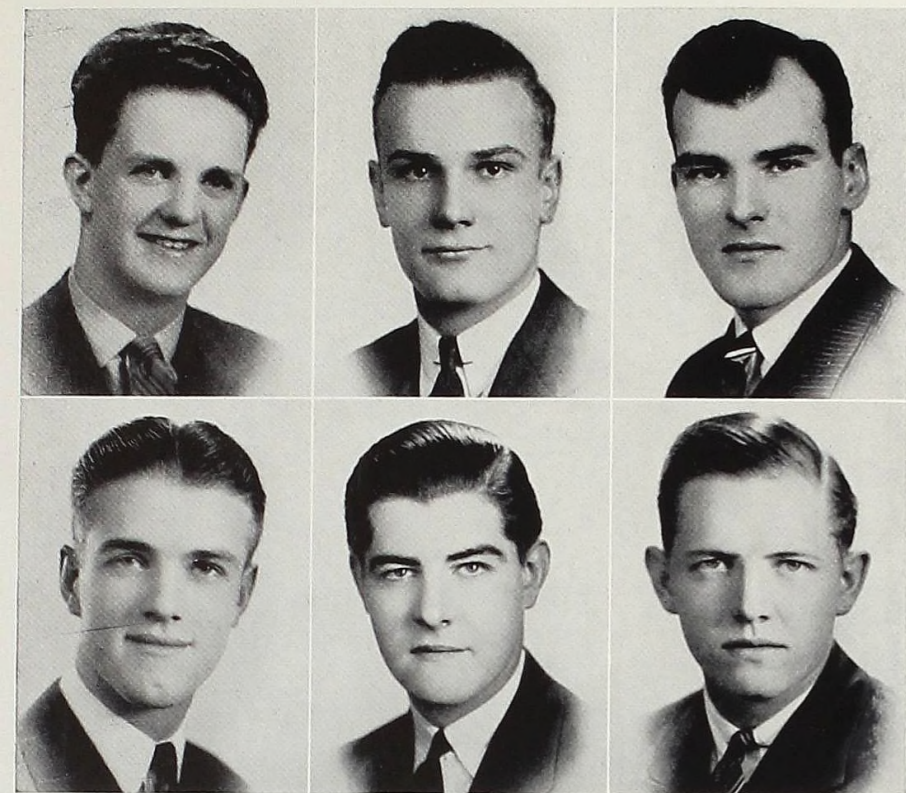
C. CURRIE
C. ELDER

R. DEVANEY
D. FEICHTENBINER

J. DUNNETTE
W. FOLLIS



SENIORS



R. GARTHWAITE
C. HUMISTON

W. GELSTON
A. JENKINS

M. HULTMAN
J. MATHEWS

SENIORS

ROBERT E. GARTHWAITE
Flint . . . PHI PHI ALPHA . . . Tennis team, 3, 4 . . . Intramural basketball, 3, 4 . . . German Club, 4 . . . Pre-Medic Club, 4.

MILLARD W. HULTMAN
Grand Rapids . . . ZETA SIGMA . . . A Cappella Choir, 3, secretary, 4 . . . Track team, 3, Captain, 4 . . . Zeta Sigma President, 4 . . . Chapel Choir, 3, 4 . . . Football, 3, 4 . . . Intramural basketball, 3, 4 . . . Inter-Fraternity Council, 4.

ALFRED T. JENKINS JR.
Mount Vernon, N. Y. . . . ZETA SIGMA . . . Football manager, 2 . . . Drama Club, 1, 2, 4 . . . I. R. C., 4 . . . Scotsman staff, 4.

WILLIS L. GELSTON
Highland Park . . . PHI PHI ALPHA . . . Drama Club, 1, 2, 3, President, 4 . . . Tennis team, 2 . . . Scotsman staff, 3 . . . Almanian staff, 1, 2 . . . Scouting . . . Hockey team, Captain, 2, 3.

CHARLES G. HUMISTON
Clawson . . . PHI PHI ALPHA . . . Student Council, 2 . . . Swipes Force, 2, 3, Head Swipe 4 . . . Basketball, 3, 4 . . . Baseball, Co-manager, 3, 4.

JOHN H. MATHEWS
Alma . . . ZETA SIGMA . . . Football, 1, 2, 3, 4 . . . Basketball, 1, 2, 3, 4 . . . Track team, 1, 2, 3 . . . Athletic Board of Control, 1 . . . I. R. C., 1 . . . Inter-Fraternity Council, 4.

GORDON M. NETZORG
Alma . . . ZETA SIGMA . . . I. R. C., 1, 2, President, 3, 4 . . . Golf squad, 2, Captain, 3, 4 . . . Track team, 2, 3, 4 . . . Football, 3.

KENNETH J. OTIS
Belding . . . ZETA SIGMA . . . Football, 2, 3, 4 . . . Basketball, 2, 3 . . . Tennis, 3 . . . German Club, 2.

ROBERT G. PURDY
Alma . . . PHI PHI ALPHA . . . Class President, 1 . . . Student Council, 1, 4 . . . Football, 3, 4 . . . Tennis, 2, 3, 4 . . . Intramural basketball, 2, 3, 4 . . . M. I. A. A. Representative, 4 . . . Athletic Board of Control, 4 . . . Student Marshall, 4.

RICHARD S. NEVILLE
Manistique . . . ZETA SIGMA . . . Band, 1, 2 . . . A Cappella Choir, 1, 2, 3 . . . German Club, 1, 2 . . . Debate, 1, 2, 3 . . . Manager of Oratory—Debate, 3, 4 . . . Oratory, 1 . . . I. R. C., 1, 2, 3, President, 4 . . . Pre-Medic Club, 1, 2 . . . Swipes Force, 1, 2, 3, 4.

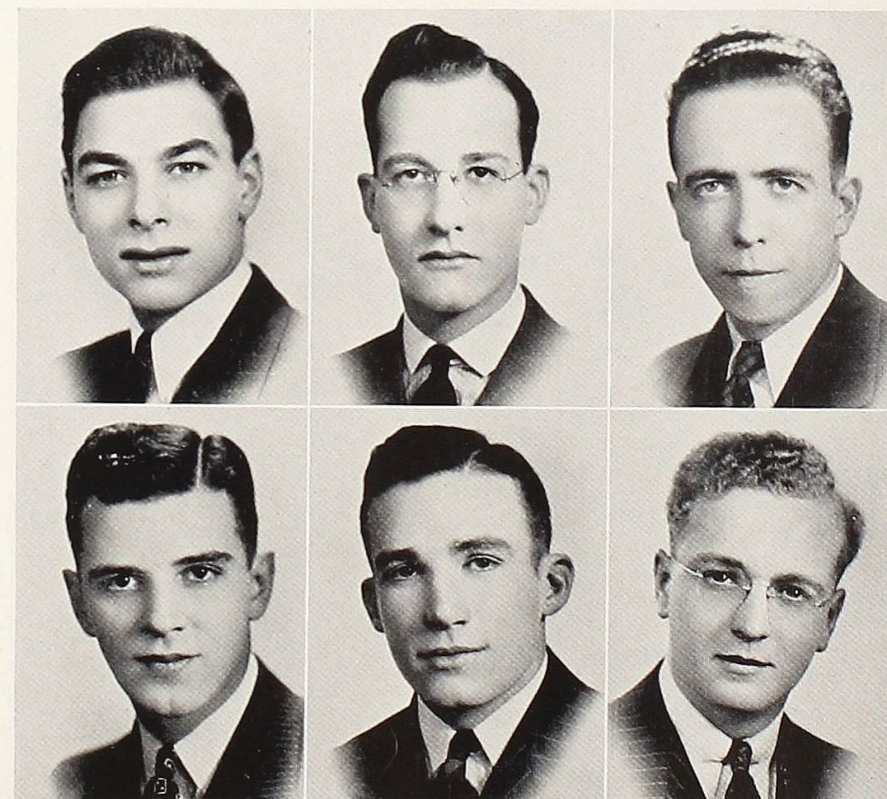
THOMAS H. PLOWMAN
Perry . . . ZETA SIGMA . . . Football, 3 . . . Basketball, 3, 4 . . . Golf team, 3, 4 . . . Baseball, 3, 4.

RICHARD W. RADEMACHER
Alma . . . ZETA SIGMA, Honorary . . . Student Athletic Manager, 4 . . . Debate, 4 . . . Business Manager of Scotsman, 3 . . . Almanian staff, 3, 4 . . . Scotsman staff, 4.

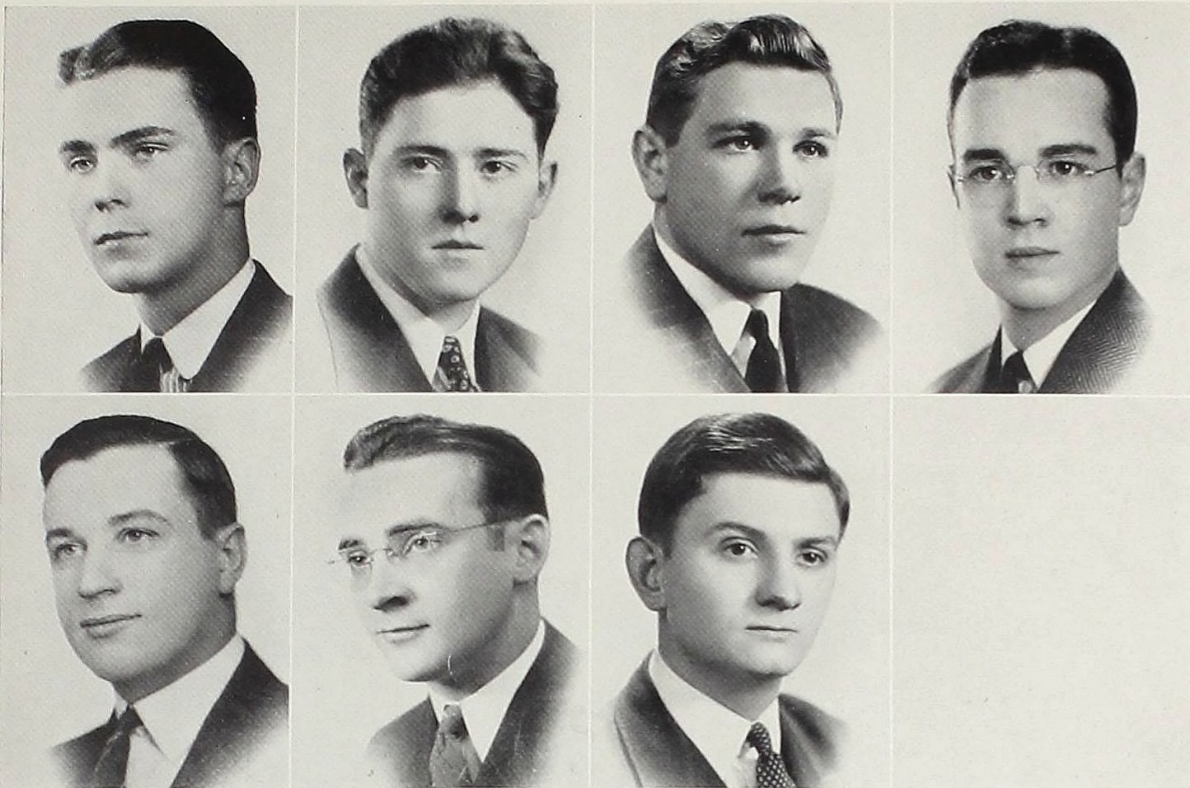
G. NETZORG
T. PLOWMAN

R. NEVILLE
R. PURDY

K. OTIS
R. RADEMACHER



SENIORS



SENIORS

G. RUNKEL
C. SKINNER

J. SANDERS
H. STACEY

F. SEAVITTE
R. STAUDACHER

J. SIEG

GILBERT A. RUNKEL JR.

Lake Orion . . . ZETA SIGMA . . .
Scotsman staff, 4 . . . Football, 3 . . .
Basketball, 3.

FRANCIS H. SEAVITTE

Ecorse . . . ZETA SIGMA . . . Inter-
Fraternity Council, 4 . . . Football, 1, 2,
3, 4, M. I. A. A. second team, 4 . . .
Scotsman staff, 4 . . . Intramural basket-
ball, 1, 2 . . . Zeta Sigma President, 4.

CHARLES E. SKINNER

Phelps, N. Y. . . . PHI PHI ALPHA . . .
Band, 2, 3, 4 . . . Drama Club, 1, 2, 3, 4
. . . Student Council, 2, 3, President, 4
. . . A Cappella Choir, 1, 2, 3 . . . In-
tramural basketball, 1, 2, 3, 4 . . . Student
Marshal, 2, 3.

RUSSELL F. STAUDACHER

Saginaw . . . ZETA SIGMA . . . I. R. C.,
1, 2 . . . Almanian staff, 1, 2, 3 . . .
Scotsman Editor, 3, 4 . . . Intramural
basketball, 1 . . . Inter-Fraternity Council,
4 . . . Zeta Sigma President, 4 . . .
Publicity Director, 3, 4.

JACK F. SANDERS

Alma . . . PHI PHI ALPHA . . . Phi
Sigma Pi, 3, 4 . . . A Cappella Choir,
2, 3, 4 . . . Chapel Choir, 3, 4 . . .
Band, 1, 2, 3, 4 . . . Football, 1 . . .
Intramural basketball, 1, 2, 3, 4 . . .
Tennis, 4.

JACK E. SIEG

Alma . . . ZETA SIGMA . . . Intramural
basketball, 1, 2, 3, 4 . . . J Hop Chair-
man, 3 . . . Scotsman staff, 3, 4 . . .
I. R. C., 2.

HAROLD W. STACEY

Rockford . . . ZETA SIGMA . . . Intra-
mural basketball, 1, 2, 3, 4 . . . German
Club, 4.



JUNIORS

Top Row, left to right: Charles LeClaire, Clifford Carter, Alfred Lindley, James Weir, Henry Broughall, William Morrison, William Smith, Roy Anderson, Charles Meach, Robert Fulton.

Middle Row: Joseph McDonald, Morley Webb, Donald Smith, Robert Gould, Robert Spencer, Elton Ditto, Hubert Hill, Herbert Lintz, Earl Blekking, Al Schmidt.

Bottom Row: Hugh Cook, Webster Cutler, William Ginther, Gordon Tice, John Tomes, Robert Trull, Richard Ginther, Charles Climie.

SINCE that eventful September morning in 1936 when the verdant Freshmen of that year entered Alma's portals, time has seen them slowly ripen and in another year will be ready for picking.

During the last three years, the men of the class have done much to leave their footprints in Alma's sands of time. Six men earned berths on the varsity football squad, and five have earned their A's. One man, Donald Smith, has won an enviable position on Alma's athletic teams. He, with another junior, Angus MacGarvah, will carry the junior class honors to greater heights by leading next year's football team as co-captains. Two junior class men have won places in this year's Hall-of-Fame.

Four men share the burdens of student government. Clifford Carter as president of the class, William Smith, treasurer, and Harold Teak and Morley Webb as student council representatives, have led the way in the political field.

Although this dauntless class quickly showed their superiority by winning the annual flag rush when they were Freshmen, they took a quick step backwards by losing the event to the Freshmen a year later. Now they have again hit their stride and are rapidly displaying that fine mettle that is characteristic of Alma students.

SENIORS WITHOUT PICTURES

WILLIAM E. BARSTOW
FREDERICK A. BRAMAN
JOHN BRYCE
LAMAR T. CASE
DOUGLAS J. GARRISON
GORDON C. GRAPES

CHESTER T. HARVIE
KENNETH A. HOFFMAN
HOWARD G. NUNN
CLARE W. SPEARS
LOUIS R. SCHNEIDER
DUDLEY A. TABER



SOPHOMORES

Top row, left to right: Robert Hanzel, William Carr, Herbert Spendlove, Dane Smith, Carl Wahlsten, John True, Thomas McClelland, Salvador Cicinelli.

Middle Row: Sten Larson, William Yoh, Thomas Purdy, Wilfred Webb, Gerald Barnett, Gerald Lappin, Eugene Nixon.

Bottom Row: Joseph Goodell, Sam Ball, Richard Krall, Aymour Johnson, Louis Friedrich, Ernest Gillard, Charles McLean, John Bell.

A YEAR ago last September, there arrived upon the Alma campus a group of young, industrious, eager high school graduates with a thirst for higher knowledge. They surveyed all that which surrounded them in their new atmosphere and then settled down to the business of obtaining for themselves an education. These youthful seekers of knowledge, chose their subject, became acquainted with their professors, college class room technique, and began the long climb towards graduation, and are today, our budding Sophomores.

The class of '41 has been very active in campus activities. As Freshmen they won the flag rush from the Class of '40, but lost it last fall to the incoming Class of '42. Fourteen men were members of this year's varsity football squad, nine had positions on the basketball squad, and fourteen others are taking part in track, baseball, and tennis.

Tom Purdy, Hugh Garrison, and John True are president, treasurer, and student council representative respectively. Eugene Nixon, Arvo Juhola, Peter Pawlyk are but a few of the Sophomore men who have attained high scholastic standards.

FRESHMEN

ALONG with Alma's New Deal, there came onto the campus last fall, the largest group of high school graduates ever to enroll at our Alma Mater.

The men of this class quickly proved themselves capable by accepting the Sophomore challenge and defeating the second year men in the traditional flag-rush in record time. The Freshmen football squad, composed of thirty-seven huskies, enjoyed a successful season, winning three games and losing one. The fifteen man frosh basketball squad won six games and dropped but one, giving promise of much fine material for next year's varsity. Robert Kirby, star of the gridiron and hardwood court, is also one of the most outstanding frosh students.

Three men hold class offices. They are Lee Clack, president; Donald McKeith, treasurer, and Walter Brieden, student council representative.

By the increase in enrollment as the result of the many new freshmen, new spirit in college life has been instilled in Alma College. By their presence, student organizations, band, college, Almanian, and next year, the athletic teams, have taken on a new and brighter aspect.



Top Row, left to right: Robert Dickinson, Lynn Wilson, Sheldon Hastings, Dean Fink, Carvel Clark, James Birdsall, Bruce Kane.

Middle Row: Walter Ruthig, Jack Crittenden, Ben Backus, Fred Crockett, George Nason, Walter Brieden.

Bottom Row: Ezra Mason, Al McQuaig, Paul Youngs, Phillip Baker, William Koepfen, Woodrow Wooley, Ralph Brown.



Top Row, left to right: Elmer Baker, Russell Stirling, Andrew Horne, Alfred Schuster, Charles Weiss, Bruce Lindley, Donald Loveland, Edward Morrison, Clifford Leetsma.

Middle row: Albert Wilson, Elliot Harmon, Everett Reese, John Lea, Carvel Clark, Clancy Hoogeland, George Jennings, Bruce Mellinger, Harold Draper.

Bottom Row: Ted Hackenberg, Harold Walker, Russell Alles, Austin Brennehan, Edward Welter, George DeHority, William Moody, Clare Albee, Robert Rentz.

FRATERNITIES



Standing, left to right: George DeHority, George Gillert, Carl Elder, Russell Staudacher, Francis Seavitte.
Seated: Charles Skinner, Barney Roepcke, Millard Hultman.

THE Inter-Fraternity Council, which is composed of nine men, three from each of the fraternities, acts as the governing body for the fraternities on the Alma College campus. The council decides over any conflicts which may arise among the fraternities and also handles the pledging rules for men.

THE founding, this year, of Delta Gamma Tau, the new Alma College fraternity, was brought about mainly through the efforts of Gordon A. Macdonald and Henry Howe, faculty members. The formation of this new men's society came as the result of the increase in enrollment of male students on the campus. College authorities, looking ahead into the future when more fraternities would be needed, appointed Coaches Macdonald and Howe to lead a group of non-fraternity men in the creation of this fraternity.

A committee was selected, and by Christmas time, twenty-seven men had agreed to form the third fraternity. Barney Roepcke was elected president.

Many thanks to Coaches Macdonald and Howe in taking time off from their regular duties to help organize Delta Gamma Tau which is proving itself a great addition to Alma College.



DELTA GAMMA TAU

REALIZING that the two existing fraternities could not pledge the large male enrollment of the freshmen class this year, the faculty, under Dr. Dunning, appointed Coaches Macdonald and Howe to consult the freshmen. A committee was selected and with William Morrison as their head, nominated thirty-five men of the campus. By Christmas, twenty-seven men had agreed to form the third fraternity and immediately elected Barney Roepcke, and George Gillert, freshmen, to the presidency and vice-presidency. Committees were formed including Constitution, Name, Finance, and Press.

The Name committee, through Edwin Morrison, proposed three names for the fraternity: Delta Gamma Tau, Delta Tau Gamma, and Delta Phi Gamma. Delta Gamma Tau was chosen as the official designation of the fraternity. In February, a constitution was drawn up.

Elected by the members were three patrons: Dr. Charles D. Brokenshire, Prof. Carney Smith, and Dr. Paul L. Rice. In honor of Dr. Rice's wedding, February 4, a Celebratory banquet was dined by the fraternity. Also, Dr. Dunning was elected to act as trustee of the new fraternity with the officers.

Hopes of the fraternity are to have a house by next year while for the past year, they have met in the Recreation Rooms in Pioneer Hall.

Top Row, left to right: George DeHority, Lynn Wilson, Walter Ruthig, Sam Ball, Austin Brenneeman, Lee Clack.

Third row: Bruce Lindley, Ed. Morrison, Charles W. Weiss, Ray Robertson, Ed. Baklarz, Dean Fink.
Second Row: Marvin Fenner, Donald McKeith, Cliff Leestma, Donald Montgomery, Clarence Hoogerland, Mark Todd.

Bottom Row: Jack Crittenden, Donald Cook, William Morrison, Barney Roepcke, George Gillert, Walter Brieden, Louis Ohliger.

OFFICERS

- President
BARNEY ROEPCKE
- Vice-President
GEORGE GILLERT
- Secretary
WILLIAM MORRISON
- Treasurer
WALTER BRIEDEN

PHI PHI ALPHA

IT has been said that the value of a college education is not determined by the amount of acquired book-learning alone, but also by the associations and friendships made. Fraternity life supplies these important and cherished associations and friendships.

Rich in the traditions of forty-one years of life on the Alma campus, Phi Phi Alpha has earnestly endeavored to live up to its name which, translated, means "Affectionate Brothers of Learning."

Phi Phi Alpha men hold many of the important offices of the campus. The presidents of the upper three classes, the business manager of the Almanian, the president of the student council, M. I. A. A. representative, and seven members of the Student Council are all men of Phi Phi Alpha. During this year, sixteen of the twenty-five football lettermen, eight of the twelve members of the basketball squad, and many of those who will make up this year's baseball and track teams are members of Phi Phi Alpha.

Organized in 1898 as a Literary Society, Phi Phi Alpha continued until 1926 when it was transformed into a fraternity.

Men of Phi Phi Alpha have gone out into the world to take their places in all walks of life. Some have entered the ministry, some have chosen teaching as their profession, and others are doctors, lawyers, dentists, and business executives. Whatever their place in the world, men of Phi Phi Alpha have carried with them the traditions and the high morals that are an integral part of Phi Phi Alpha and of Alma College.

OFFICERS

President
CARL ELDER

Vice-President
DOUGLAS GARRISON

Secretary
WILLIAM CARR

Treasurer
MORLEY WEBB

House Manager
HAROLD TEAK

President
CHARLES SKINNER

Vice-President
CARL ELDER

Secretary
WEBSTER CUTLER

Treasurer
MORLEY WEBB

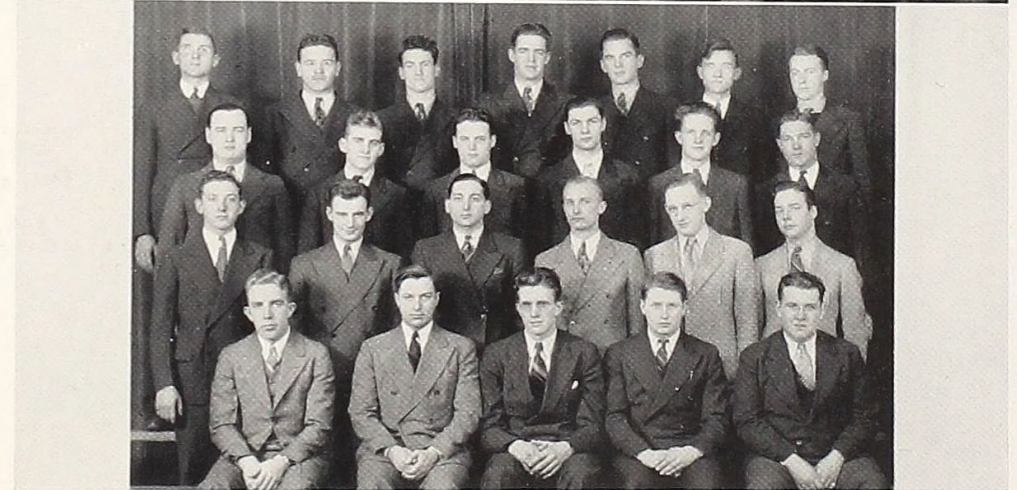
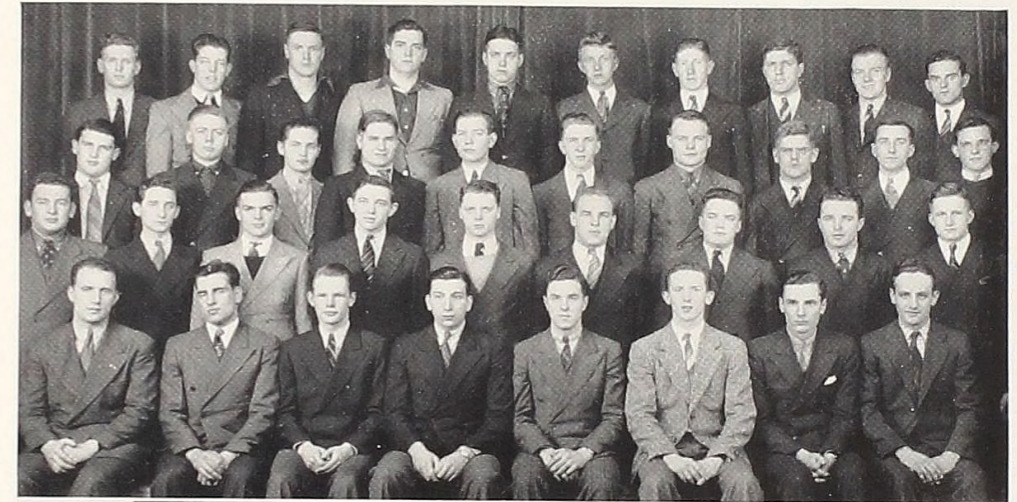
House Manager
ROBERT TRULL

Top Row, left to right: Carl Wahlsten, Bruce Kane, Carrol Jones, Louis Friedrich, Hugh Garrison, Warren Hartt, Andrew Horn, Edward Ziem, Fred Hartt, Wm. Carr.

Third Row: Clare Albee, Edsel Putnam, Gerry Lapin, Bruce Mellinger, Ezra Mason, Wm. McLain, Francis Cappaert, Fred Hill, Charles McLean, Russell Alles.

Second Row: Roger DeNoyelles, Donald Wiley, Wm. Moody, John Lea, Paul Dane, Gerald Barnett, Thomas Purdy, Francis Kain, Wilfred Webb.

Bottom Row: Victor Fox, Robert Gilliland, George Fuller, Salvador Cicinelli, Carvel Clark, Ralph Banfield, Sheldon Hastings, Robert Munger.



Top Row, left to right: Adelbert Lindley, Wm. Barstow, Clifford Carter, Howard Nunn, Wm. Smith, Alfred Lindley, Kenneth Hathaway.

Third Row: Robert Spencer, Douglas Garrison, Robert Devaney, Malcolm Adams, Robert Garthwaite, Richard Bingham.

Second Row: Wilson Dunnette, Don Smith, Peter Cicinelli, Robert Gould, Elton Ditto, Albert Schmidt.

Bottom Row: Harold Teak, Charles Skinner, Carl Elder, Morley Webb, Webster Cutler.

ZETA SIGMA

FOUNDED only a year after Alma College itself, Zeta Sigma Literary Society has prospered throughout the years until today it stands as one of the best fraternal groups on the local campus. As its purpose and that of the founders, the organization was established to raise the literary standards of those who joined its ranks, but above all its purpose was to mould men of character who could fit into all walks of life. Succeeding nobly in this phase of their work, the Zetas point with pride today at the long list of famous men throughout the nation who belonged to Zeta Sigma when they went to Alma. One of their chief honors lies in the fact that the fraternity has the largest number of successful high school coaches in the country today.

Members of Zeta Sigma appear in all the organizations of the college, and scholastically they are on their way towards establishing a new high for their group.

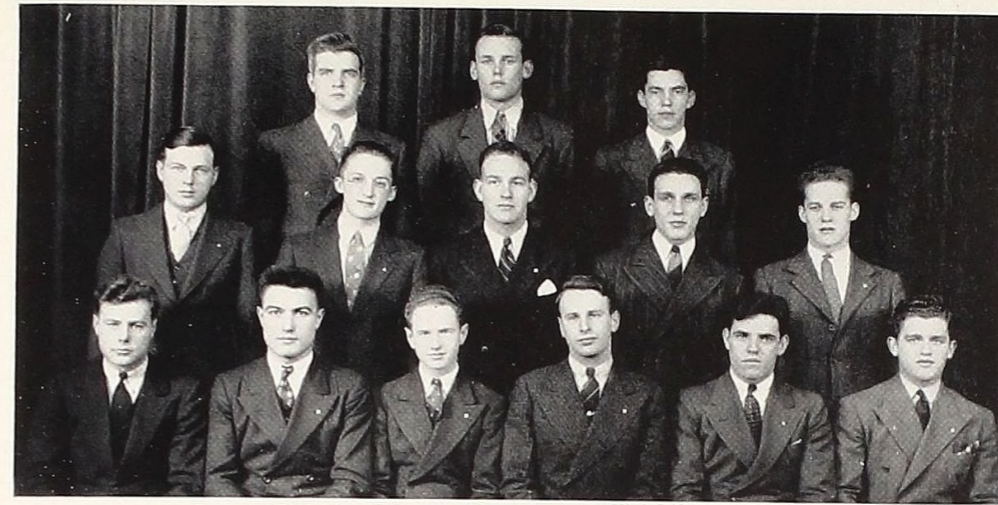
Twelve members of Zeta Sigma played varsity football with Sam Seavitte and Dick Ginther rating M. I. A. A. mention. Ten pledges played yearling



Top Row, left to right: C. LeClaire, J. Weir, T. McClelland, J. Mathews, C. Meach, R. Krall, A. Jenkins, E. Riggs.
 Third Row: W. Rubert, H. Cook, W. Bainbridge, C. Currie, E. Arnold, J. True, R. Ginther, M. Hultman, T. Plowman, J. Emms.
 Second Row: R. Rademacher, H. Spendlove, G. Runkel, F. Seavitte, R. Bendall, S. McFadden, C. Climie, J. Bell, P. Pawlyk.
 Bottom Row: W. Ginther, G. Tice, P. Becker, G. Netzorg, D. Carpenter, J. Tomes, R. Staudacher, R. Neville, W. Moore.

OFFICERS . . .

President	FRANCIS SEAVITTE	MILLARD HULTMAN	RUSSELL STAUDACHER
Vice-President	MILLARD HULTMAN	RUSSELL STAUDACHER	THOMAS PLOWMAN
Secretary	RICHARD BENDALL	RICHARD BENDALL	ALFRED JENKINS
Treasurer	CHESTER CURRIE	CHESTER CURRIE	CHESTER CURRIE



Top Row, left to right: W. Prescott, W. Ramsey, A. Schuster.
 Second Row: T. Hackenberg, H. Walker, P. Young, A. McQuaig, D. Tobey.
 Bottom Row: S. Larson, R. Dickinson, B. Backus, B. Katzenmeyer, B. Wilson, G. Nason.

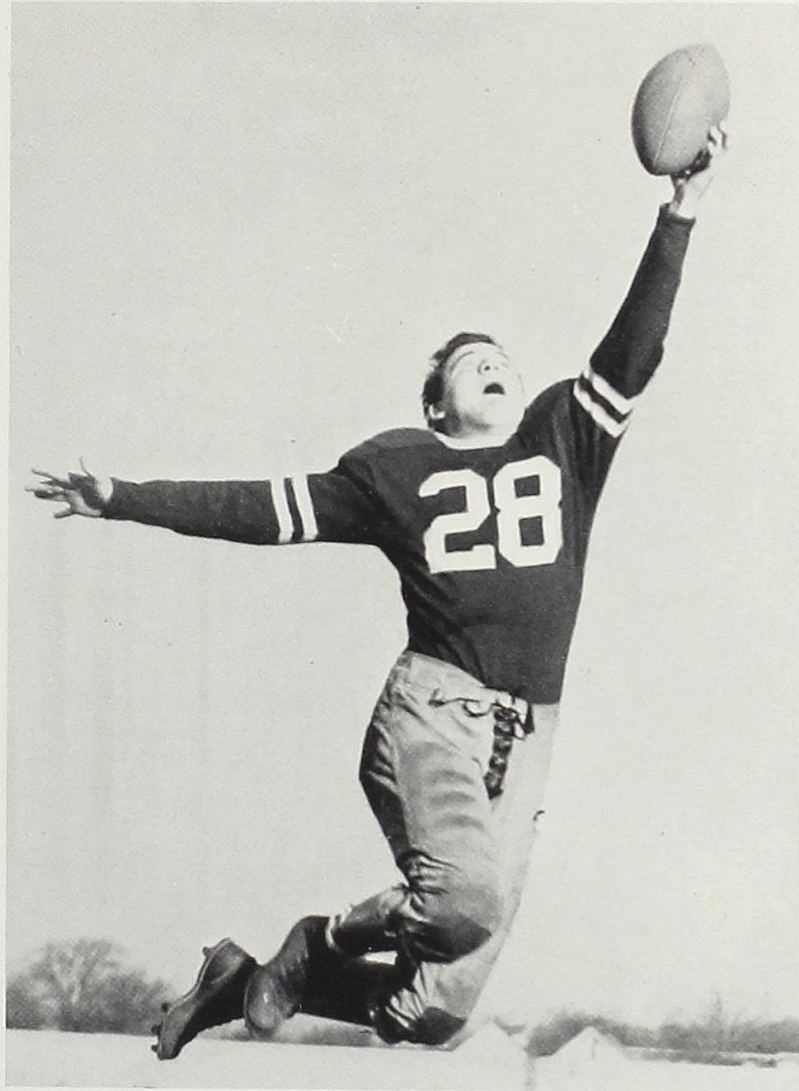
football. Six members found their way onto the varsity basketball team with Keith Carey leading eight Freshmen in one of the most successful freshman cage seasons. Mel Hultman, Zeta senior, captained the "39" track squad. Zetas composed the entire golf team which went on a victorious Southern trip during spring vacation.

Douglas Clack, senior member, led Phi Sigma Pi honor group as its President as well as acting in the same capacity for the International Relations group. Richard Neville also acted as head of the latter.

In the publications field, Zetas again entered leaders with Herb Spendlove acting as Associate Editor for both the Almanian and Scotsman, the latter publication being edited by Russell Staudacher. Richard Bendall was Business Manager for the same publication.

The year saw a successful Homecoming Banquet at the Masonic Temple, the annual Formal Dinner Dance at the Bancroft in Saginaw, a highly popular pledging period followed by a Wright Hall Banquet, various Open Houses and other fraternal gatherings.

Athletics



CAPTAIN DEVANEY



ORCHIDS TO . . .

COACH Gordon Macdonald who stuck to his post until the last . . . who stayed out coaching our teams until retiring became a matter of the most serious importance . . . Then, and only then did he step out of character to become "the tough luck champion of the year." . . . Out of coaching togs into the white garments of hospitals . . . out of campus activity into the world of anxiety, antiseptics and hope . . . Permanence of a leg injury gained while making a name for Alma College back in his college days left Mac without circulation in his right leg . . . early this fall a minor infection set in the bad leg and gangrene developed . . . Two operations followed after which recovery proved slow and tedious . . . To facilitate his return to office he left Alma for the sunnier and healthier days of Florida . . . Here he had nothing to do but get well and plan for fellows and teams back at the "alma mater." . . . Thus, we offer literary orchids to one of the gamest fighters of them all.



VARSITY FOOTBALL

COACH Gordon Macdonald began his third year at Alma College with fine prospects and a squad expected to make a strong bid for the MIAA conference title . . . He had a big, veteran line . . . small but fast backfield . . . better reserve strength than in 1937 when the Scots placed second in the conference standings.

Just when the outlook was the brightest, that most dreaded of a coach's headaches, injuries, took a hand . . . Regulars were kept out . . . linemen shifted to the backfield . . . the lineup was revamped again and again until a starting eleven was not known until game time . . . In spite of these numerous difficulties and an exceptionally hard schedule, the Scots came through with three wins, four losses and one tie . . . a notable achievement.

The Scots opened on September 24 against Miami University at Oxford, Ohio, being crushed, 51-0, by a combined airtight defense and a powerful running attack . . . Alma was outweighed by more than ten pounds per man, and superior weight told . . . Alma threatened once when they got the ball to Miami's six yard line . . . Captain Bob Devaney in the line and Don Smith in the backfield were Alma's best.

In another non-conference contest on September 30, the Scots dropped their second game, 20-0 to Michigan Normal

1938 SCHEDULE

	Oppo- Alma	nents
Miami University . . .	0	51
Michigan State Normal	0	20
Albion College	6	6
Olivet College	34	6
Hope College	13	7
Hillsdale College . . .	0	20
Adrian College	34	0
Kalamazoo College . .	0	6

at Ypsilanti . . . Alma gained more yardage and made more first downs . . . the loss of four regulars by injuries could not be offset when the scoring punch was needed . . . In its first MIAA game of the season, Alma tied Albion 6-6 in a night game on October 7 at Albion . . . The game was principally a battle between the lines with Angus MacGarvah as the chief bulwark for the Scots . . . Although the Alma attack didn't get going, the defense was tops . . . Main feature of the game was a stonewall stand by the Alma line in the second quarter.

The Scots opened their home schedule with a fine performance against Olivet on October 14, winning 34-6 under Bahlke Field's new floodlights . . . Alma showed great improvement in all departments, playing before a crowd of 1,200 fans . . . Smith had three touchdowns. Dick Ginther and Wally Wrege also scored Alma touchdowns . . . The Comet's touchdown came in the final minutes when Morvilius broke away for 58 yards to score.

Displaying power and alertness on both offensive and defensive play, the Scots next won over Hope 13-7 on October 22 at Holland . . . Dick Ginther and Bob Devaney looked best for Alma . . . Olson and Mathews made the Scots' touchdowns . . . Hope's score came as the result of an 18 yard sprint by Lee Brannock . . . Mainly because of the

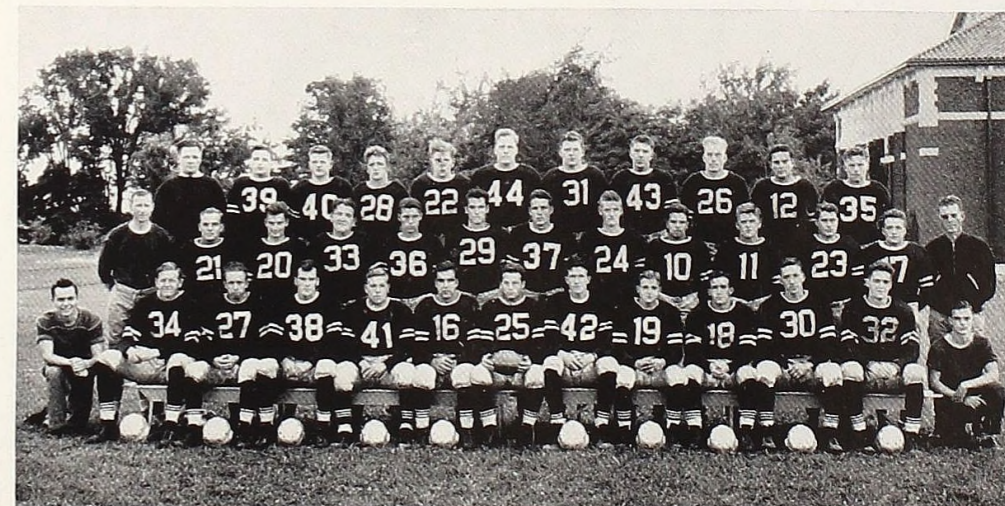
1939 FOOTBALL SCHEDULE

-
- Sept. 23—there
OHIO WESLEYAN
- Sept. 29—here
ALBION (night)
- Oct. 7—there
OLIVET
- Oct. 13—here
HOPE (night) HOMECOMING
- Oct. 21—there
HILLSDALE
- Oct. 27—here
ADRIAN (night)
- Nov. 3—there
KALAMAZOO
- Nov. 10—here
MICH. STATE NORMAL (night)

Top Row, left to right: W. Erdman, business manager; F. Kain, S. Moran, B. Richardson, J. True, A. MacGarvah, B. Frier, E. Ziem, A. Juhola, B. Carr, J. Mead.

Middle Row: Henry Howe, assistant coach; G. Barnett, D. Smith, W. Cutler, G. Olson, C. Carter, D. Ginther, C. LeClaire, W. Wrege, F. Hill, F. McMillen, T. Purdy, Gordon A. Macdonald, head coach.

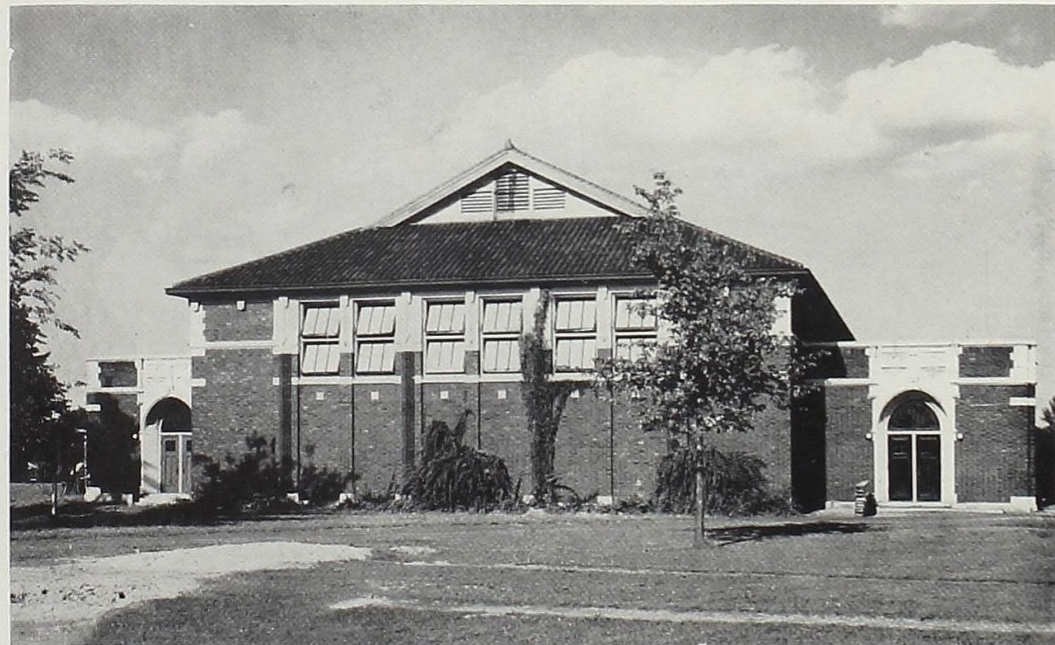
Bottom Row: J. Howe, trainer; J. Mathews, K. Otis, M. Hultman, F. Seavitte, B. Adams, B. Devaney, C. Elder, R. Bendall, G. Purdy, W. Follis, H. Nunn, B. Moody, trainer.



outstanding play of Al Rizzardi, passing star, and Bill Trau, speedster back, the Scots dropped their next game to Hillsdale 20-0 before a homecoming crowd of 2,000 at Bahlke Field . . . The 'Dale's backs were shifty and fast . . . their line blocked beautifully . . . In a purely defensive battle, Smith and Olson looked best in Alma's backfield and Devaney, MacGarvah, and Ziem did fine work in the line.

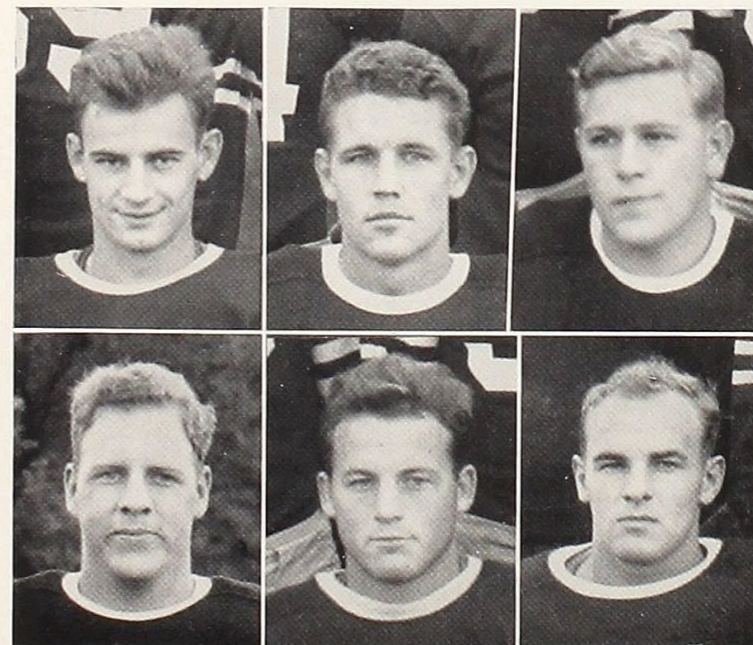
On November 5, Alma went to Adrian to romp to a 34-0 victory . . . Smith and Richardson played the best ball for the backfield . . . Devaney, and Sam Seavitte were mainstays of the line . . . Richardson scored twice, and Dick Ginther, Don Smith, and Bob Devaney each once . . . Alma's gridders dropped their last game of the season to Kalamazoo's Hornets 6-0 on November 12 under Bahlke Field's floodlights . . . Most of the play took place between the 30-yard stripes . . . Neither team showed much offensive spirit until the third quarter when the Black and Orange scored. . . For Alma, Captain Devaney played a fine game as did Seavitte, and the punting of Smith was outstanding.

Judson A. Hyames, director of athletics at Western State Teachers College, was the speaker at the football banquet following the close of the season . . . Captain Devaney was voted the most valuable player by his teammates . . . Captains elected for the 1939 season were Don Smith, Charlotte, and Angus MacGarvah, Detroit.



Smith was the only Scot player to receive a berth on the first team of the all-MIAA rating . . . Named to the second team were MacGarvah, Seavitte, and Dick Ginther . . . Devaney and Gerry Barnett were given honorable mention.

M. I. A. A. HONORS



Top Row, left to right:
DON SMITH
DICK GINTHER
FRANCIS SEAVITTE

Bottom Row, left to right:
ANGUS MacGARVAH
BOB DEVANEY
GERALD BARNETT

YEARLINGS



Top Row, left to right: L. Clack, B. Lindley, K. Carey, D. Gallagher, C. Jones, J. Weir, R. Robertson, R. Kirby, A. Wilson.

Middle Row: Coach Henry Howe, R. Bingham, H. Hanson, H. Draper, W. Yoh, B. Kane, G. Jennings, C. Hoogerland, R. Huffsteter, D. McKeith, J. Godleski, assistant coach Art Smith.

Bottom Row: F. Hartt, R. Holmes, W. Bauer, P. Youngs, R. Dickinson, F. Cappaert, M. Fenner, G. Gillert, E. Riggs, E. Arnold, B. Reed.
Sitting: M. Nelson, A. McQuaig, J. King, R. Banfield, C. Albee, J. Lyons.

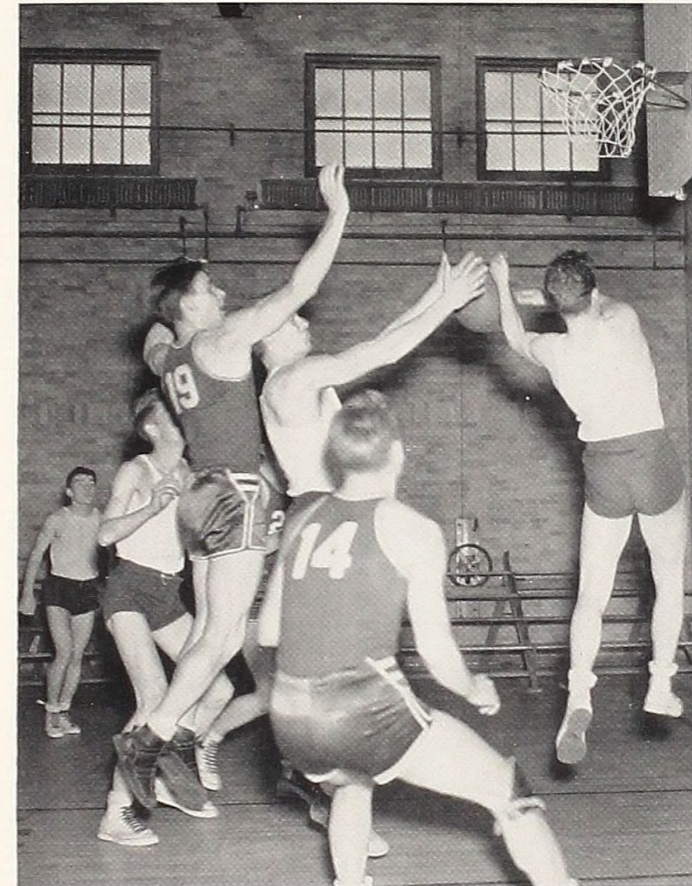
WITH a freshman football team which went through its season with three wins and one loss, Alma seems ready to resume its conference wars next fall with what may prove to be the strongest football team within the last four years. . . . Coach Henry Howe, imported from St. Joseph High School, with his assistant, Art Smith, former Alma College athlete, molded two great lines and several backfield combinations from a group, half of which registered as backs.

The boys were big and fast . . . had the necessary spark for a successful offense . . . were cagily skillful on defensive play . . . Victories were won over Hope, Western State, and Albion frosh . . . The only loss was to Central State . . . All four were night games . . . Bob Kirby was elected honorary captain at the end of the season.

Opening at Holland October 5, the Scotties scored a 19-6 win over the Hope frosh . . . McQuaig, King, and McKeith scored touchdowns and Hanson the extra point . . . Hope's touchdown came as the result of a blocked punt . . . On October 14, Alma lost to Central State's Bearkittens 6-0 . . . State wore the Scotties down with several teams and used straight football to score . . . Injuries were numerous with Arnold most seriously with several broken ribs.

Western State's yearlings invaded Bahlke Field on October 21 but were routed 15-0 . . . King scored twice, first on a reverse and the second when he took a pass from McQuaig in the endzone . . . Hanson converted . . . Cappaert and Gallagher got together to score a safety . . . Coach Howe's boys passed their way to a 13-0 win over Albion's first year men at Bahlke Field to end their season . . . Nelson scored first on a pass from Kirby . . . Jones blocked an Albion punt to score in the third period . . . Riggs added the extra point on a pass.

VARSITY BASKETBALL

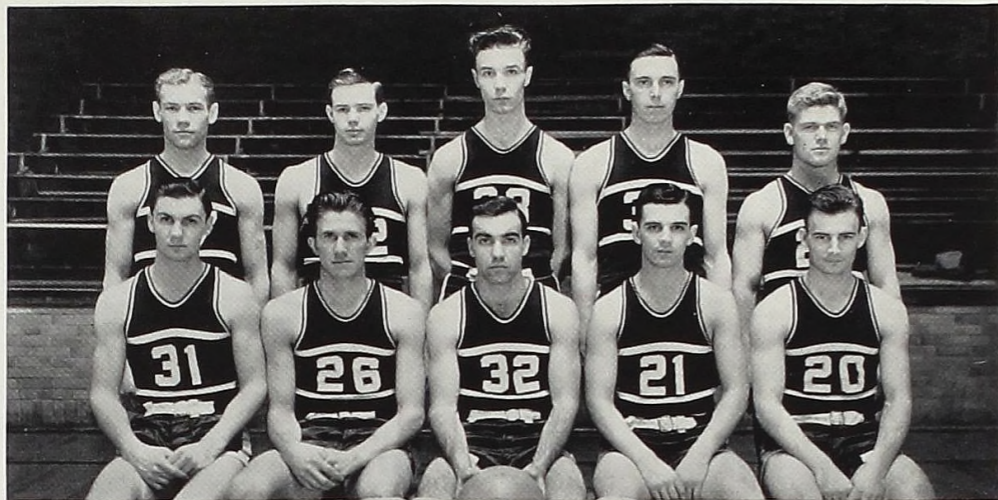


THE Alma College varsity basketball season was a highly disappointing one as the Maroon and Cream cagers dropped several close games to wind up far down in the conference standings . . . four wins and fourteen losses . . . Prospects looked good at the start of the season with all but one of last year's starting five back and a wealth of material up from last year's frosh aggregation . . . Coach Gordon A. Macdonald took from this group a team fashioned for its height and ball-handling ability, and a small team, picked for its speed and clever shooting . . . The arrangement failed to work, coupled with injuries, and so the teams were mixed.

At the close of the season, Coach Macdonald was forced to cease active work because of a foot ailment which had bothered him all during the football campaign . . . Reigns of the varsity were then taken over by Coach Howe who did a fine job of filling in for Macdonald . . . Sophomore Malcolm (Heinie) Adams, who hung up 77 points in conference games alone, to place eleventh in the MIAA scoring race, was the leading scorer.

Alma opened its season with a win over Ferris Institute 39-26 on December 9 at Memorial gym . . . H. Adams was high with 10 points . . . On December 13, at Alma, a big, veteran Central State team waxed hot in the first half and then coasted home to a 47-24 win over the Maroon and Cream . . . The next game was with DeSales on December 14 at Toledo, Ohio, with the Scots again on the losing end 50-32. Bob Adams made 15 points as he played his best game of the year . . . Alma's second victory, the first in MIAA competition, came on January 6 when the Scots beat Adrian 50-22 at Adrian. Dick Ginther, with 11 and Jimmy Emms with 8 points led the scoring.

Making things tough for Kalamazoo, Alma was defeated here on January 9, 36-31. Ginther and B. Adams collected nine points each for scoring honors and Tom Plowman played fine defensive ball. Friday January 13, proved unlucky for the Scots as Al Rizzarda, all M. I. A. A. forward for two years, looped



Top Row, left to right: Chester Godleski, George Collins, William Morrison, Richard Krall, Fred Hill.

Bottom Row: Malcolm Adams, Carl Elder, Robert Adams, Thomas Plowman, Donald Smith.

in 23 points to pace Hillsdale to a 40-37 win. Alma scored 13 points to the 'Dales three in the last eight minutes . . . B. Adams was high with 10.

Olivet's Comets upset the off-form Scots, 49-38, on January 17 at Olivet . . . After trailing all the way, Albion came from behind to take a heart-breaker here, January 20, by a 27-25 score. Don Smith's floor play was a feature . . . In a M. I. A. A. game, January 27, at Holland, the tall Dutch cagers of Hope controlled the ball to easily win, 61-29, over the Scots. Substitute Wally Wrege made nine points to pace Alma . . . On February 3, Central State rolled to a 43-14 win at Mt. Pleasant. The Alma attack was the weakest of the year . . . Paced by Bob Adams, who made 12 points, the Scots drubbed Adrian 42-23 here on February 6 . . . Kalamazoo walloped the Scots 61-23 on February 10 at the Paper City. Collins with 11 points, was tops for Alma.

Setting up a huge lead in the first half, Hillsdale coasted to a 42-26 win over the Scots on February 14 at Hillsdale . . . Heinie Adams with nine points and Smith with eight led the Scots' attack . . . The fourth Alma win was over Olivet here on February 17 when Johnny Mathews and Don Smith, with nine points each, led Alma to a 39-29 win . . . In a M. I. A. A. game on February 20 at Albion, the Britons whipped the Scots 40-24 . . . The Scots lost another on February 23 in Memorial gymnasium as Michigan State Normal fast-broke to a 41-28 win . . . In the season's finale on February 27 at Alma, the Scots outplayed Hope during the first half, but lost out by a 40-23 score . . . During the second period, the Dutchmen scored almost at will with Lee Brannock totaling 15 points . . . Smith topped the Scots with eight points.



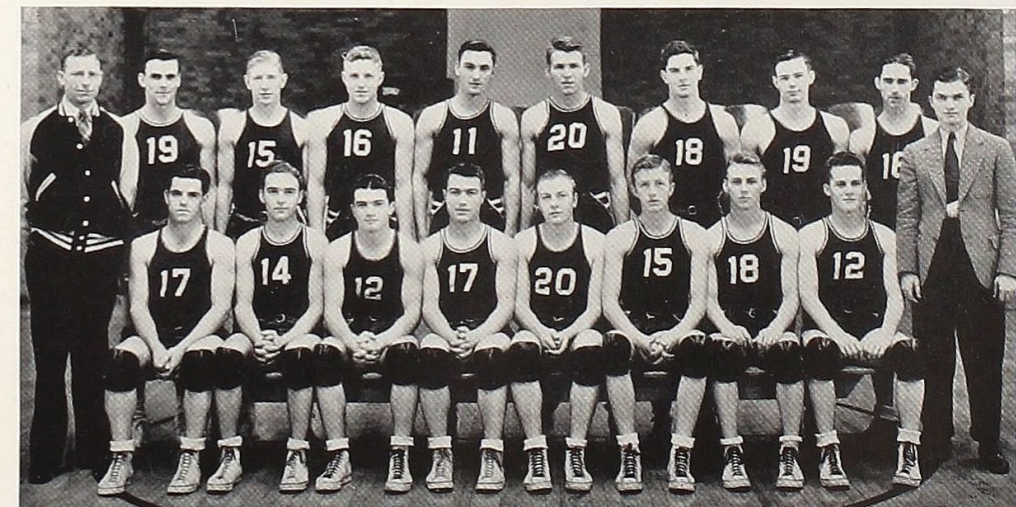
FROSH CAGERS

A GLEAM of hopeful light was cast on Alma College's dark basketball season, when Coach Howe's freshmen cagers ended their six game schedule with only one loss . . . The superiority of this group gives promise of the Scots being a top-contender in the M. I. A. A. race next year . . . Coach Howe selected twenty men from thirty-five candidates for his squad . . . His starting lineup included Rex Holmes and Sammy Turner at forwards, Keith Carey, center, and Tinker Kirby at one guard with Chick Gallagher and Ed. Riggs alternating at the other defensive post . . . Warren Hartt and Bob Dickinson also saw much service.

The season opened January 5 at Bay City Junior College with a 40-29 win . . . Carey topped the scoring with 17 points . . . Kirby and Gallagher played fine floor games . . . Western State Teachers College's green-clad frosh came here on January 13 only to be defeated 50-31 . . . Carey played only a half but collected 10 points . . . Warren Hartt picked up nine and Kirby eight points respectively . . . Sam Turner looked good with his fine ball handling.

The only loss of the season for Alma was on February 1 at Mt. Pleasant when Central State's frosh took a close one 38-22 . . . The Scotties led most of the way but faltered in the closing minutes to allow the Bearkittens to pull out in front . . . Gallagher collected 10 points . . . Coming from behind, Alma's first year men scored a win over Western State at Kalamazoo, 45-39 . . . Carey collected 18 points to lead the scoring race . . . Kirby and Holmes were outstanding for their steady, fighting, floor game.

The Scotties avenged their previous loss by beating Central State 39-25 on February 23 in Memorial gymnasium . . . Again Carey was high with 17 points and was stellar on defense, holding his man to one lone point . . . Riggs was next in scoring with 10 points . . . Alma's yearlings ended their season with a 44-27 win over Bay City J. C. . . The game was played as a preliminary to the Alma-Hope varsity game on February 27 . . . Carey topped the scoring parade with 16 points.



Top Row, left to right: Coach Henry Howe, Bob Kirby, Andy Horne, Rex Holmes, Dan Gallagher, Keith Carey, Ed. Riggs, George Collins, Charles Wasson, Francis Sherman, manager.

Bottom Row: Bud Wilson, Russ Sterling, Jack Lyons, Bob Dickinson, Fred Hartt, Warren Hartt, Sam Turner, Don Tobey.

TRACK

Top Row, left to right: Morley Webb, James Foolkes, Coach Arthur Smith, Don Smith, Dudley Taber.

Middle Row: William Carr, Kenneth Hathaway, William Smith, Arvo Juhola, Robert Gould.

Bottom Row: Malcolm Adams, Carl Elder, Millard Hultman, Chester Godleski, George Collins.



THE SCHEDULE

April 28—here
ALBION COLLEGE

May 5—there
GRAND RAPIDS JUNIOR
COLLEGE

May 12—there
CENTRAL STATE TEACHERS
COLLEGE

May 17—here
CENTRAL STATE TEACHERS
COLLEGE

May 26-27
M. I. A. A. CONFERENCE MEET
at Grand Rapids

TAKING third place in the M. I. A. A. conference indoor meet held at Hillsdale in March with only little practice indoors, Alma's track team will become a sure threat for the conference meet to be held at Grand Rapids May 26-27 with more practice as soon as weather becomes favorable. Art Smith, '38 Alma graduate, is coaching the squad for the first time this year in the absence of Coach Macdonald.

Those who made fine showings in last year's competition and are available for duty again this year include: Captain Mel Hultman, pole vault; Dud Taber, dashes; Angus MacGarvah, and Pete Cicinelli, shot put and javelin; Bob Gould, mile; Carl Elder, high jump, and Don Smith in the hurdles and dashes.

The places of Alma's three outstanding track men of last year's team are the hardest shoes to fill: Harold Dean, captain of the 1938 team, who ran the middle distances, and Dick and Jack Cresswell, miler and two miler respectively.

Others on this year's squad are: Gordon Netzorg, William Moran, Arvo Juhola, George Collins, Sal Cicinelli, Joe Godleski, James Foolkes, Malcolm Adams, Al Lindley, William Carr, Ken Hathaway, Morley Webb, and William Smith.



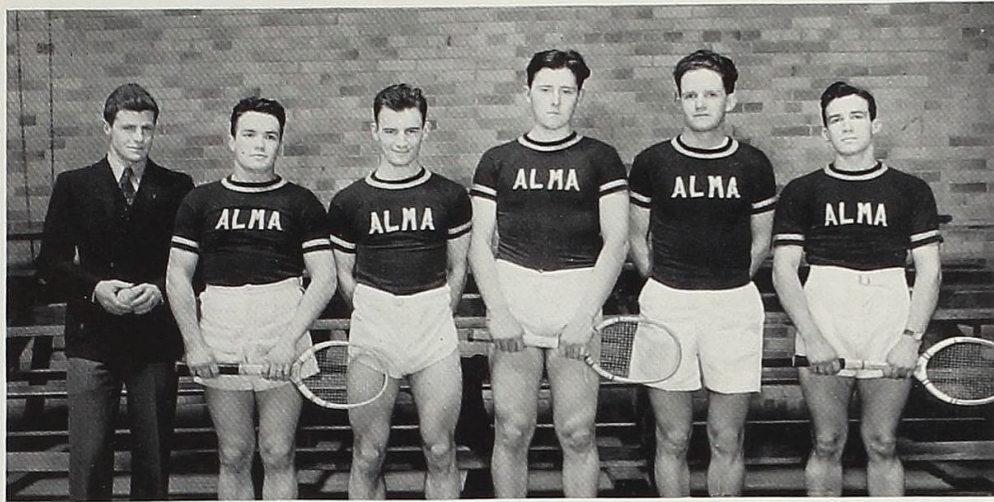
GOLF

FOR the first time in history, Alma College sent its crack golf team outside of the state to play seven games in the Southern states. With four team members consistently shooting in the seventies, Alma played a twenty-seven game schedule. The M. I. A. A. conference tournament was held at Grand Rapids, May 26 and 27. The team left March 30 for a ten day trip through the south, meeting some of the major teams of the section.

Number one man was Phil Becker, Flint junior. Captain Bill Ginther, Traverse City junior, was number two; Gordon Netzorg, Alma senior, number three, and Dick Ginther, Traverse City junior, was number four.

THE 1939 SCHEDULE

April 1	UNIVERSITY OF RICHMOND	Richmond, Virginia
April 3	HAMPDEN-SYDNEY COLLEGE	Hampden-Sydney, Virginia
April 4	DAVIDSON COLLEGE	Davidson, North Carolina
April 5	U. OF SOUTH CAROLINA	Columbia, South Carolina
April 6	U. OF TENNESSEE	Knoxville, Tennessee
April 8	U. OF INDIANA	Bloomington, Indiana
April 15	ST. MARYS, ORCHARD LAKE	Alma
April 17	CALVIN COLLEGE	Alma
April 21	FLINT CENTRAL HIGH SCHOOL	Flint
April 22	FLINT JUNIOR COLLEGE AND NORTHERN HIGH SCHOOL	Flint
April 24	CALVIN COLLEGE	Grand Rapids
May 1	FERRIS INSTITUTE	Big Rapids
May 2	HOPE COLLEGE	Alma
May 3	KALAMAZOO COLLEGE	Alma
May 5	MICHIGAN STATE NORMAL	Ypsilanti
May 6	LAWRENCE TECH	Detroit
May 9	OLIVET COLLEGE	Alma
May 11	ADRIAN COLLEGE	Adrian
May 12	FERRIS INSTITUTE	Alma
May 13	LAWRENCE TECH	Alma
May 16	ALBION COLLEGE	Albion
May 20	FLINT JUNIOR COLLEGE	Alma
May 20	MICHIGAN STATE NORMAL	Alma
May 23	HILLSDALE COLLEGE	Hillsdale
May 26-27	M. I. A. A. TOURNAMENT	Grand Rapids



TENNIS

Coach Arthur Smith, Tom Purdy, Don Smith, Jack Sanders, Robert Garthwaite, George Purdy.

FACING a schedule of thirteen games, with only two veterans back from last year's tennis team, Coach Art Smith was faced with the task of molding a balanced, winning combination out of the eight members of the squad.

Members of last year's tennis team available for play this year are George Purdy and Doug Garrison. Other racqueteers who are on this year's net squad are: Tom Purdy, Don Smith, Joe Goodell, Robert Garthwaite, Hugh Garrison, and Jack Sanders.

THE SCHEDULE

April 28	ADRIAN COLLEGE	Here
May 1	FERRIS INSTITUTE	There
May 5	DETROIT TECH	There
May 6	LAWRENCE TECH	There
May 11	OLIVET COLLEGE	There
May 12	KALAMAZOO COLLEGE	There
May 15	ALBION COLLEGE	Here
May 17	HILLSDALE COLLEGE	Here
May 19	FERRIS INSTITUTE	Here
May 22	HOPE COLLEGE	There
May 26-27	M. I. A. A. CONFERENCE MEET	at Grand Rapids

INTRA-MURALS

BILL Bainbridge's basketball team, one of the senior teams in this year's Intra-Mural Basketball tournament, captured the league's 1939 trophy. To win, the team had to defeat Francis Cappaert's freshmen, Charles Skinner's seniors, and John True's freshmen in the playoffs. An all Intra-Mural team selected from the 1939 teams by officials, consisted of Clancy Hoogerland, and Paul Dane, forwards, Bob Fulton, center, and Jack King and Pete Cicinelli, guards.

Physical Education Director Art Smith had charge of the games.

In addition to basketball, the Alma boxers got a chance to display their abilities in the second annual All-College boxing tournament held in the gymnasium March 16 and 20. Fighters took part in five classes: lightweight, welterweight, middle weight, light-heavy, and heavyweight.

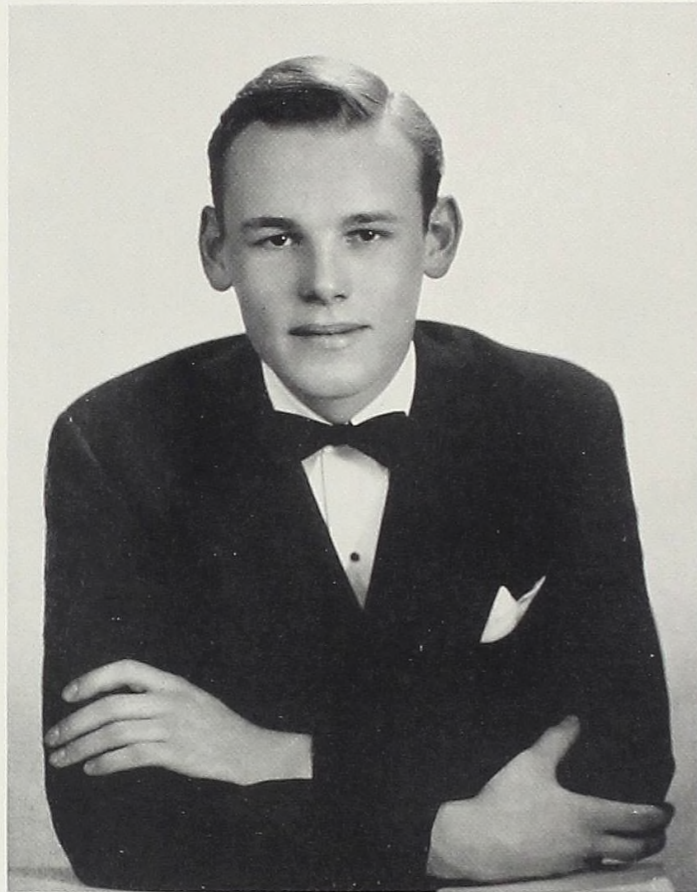
Art Smith managed the tournament which proved to be one of the year's most spectacular events. Bill Barstow was referee, Drs. Lamb, Dubois, judges, and Angus MacGarvah, timer.

BOXING CHAMPIONS — 1939

HEAVYWEIGHT DIVISION—Robert Devaney
 LIGHT-HEAVYWEIGHT DIVISION—Hugh Garrison
 MIDDLEWEIGHT DIVISION—Robert Digby
 WELTERWEIGHT DIVISION—Ralph Banfield
 LIGHTWEIGHT DIVISION—William Laird

Best Dressed Boy . . .

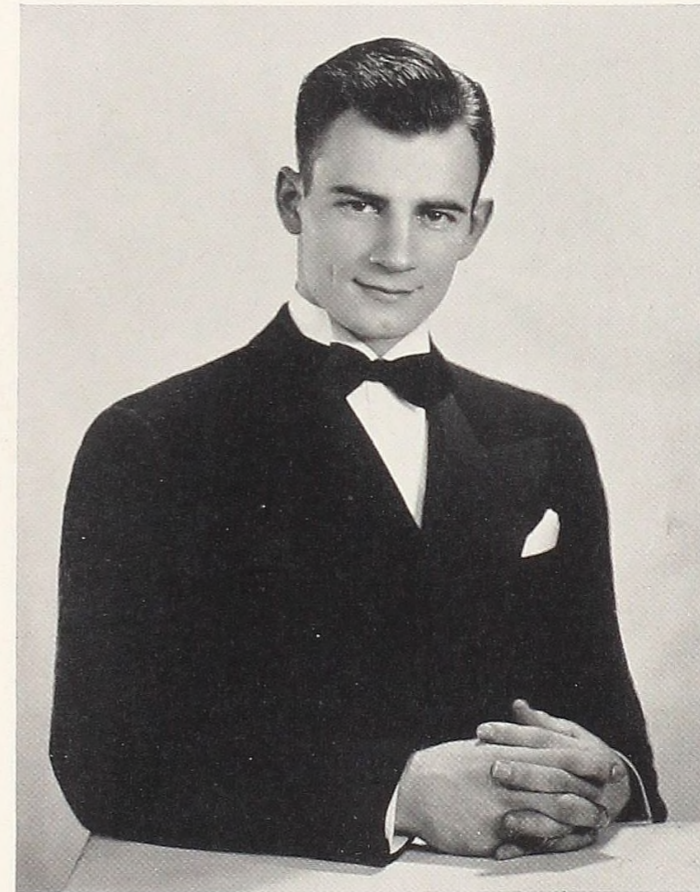
BILL RAMSEY



A wallet in golden crocodile . . . Lake Placid . . .
swimming trunks by Gantner . . . black Cadillac
roadster . . . a white gardenia on midnight blue
tails . . .

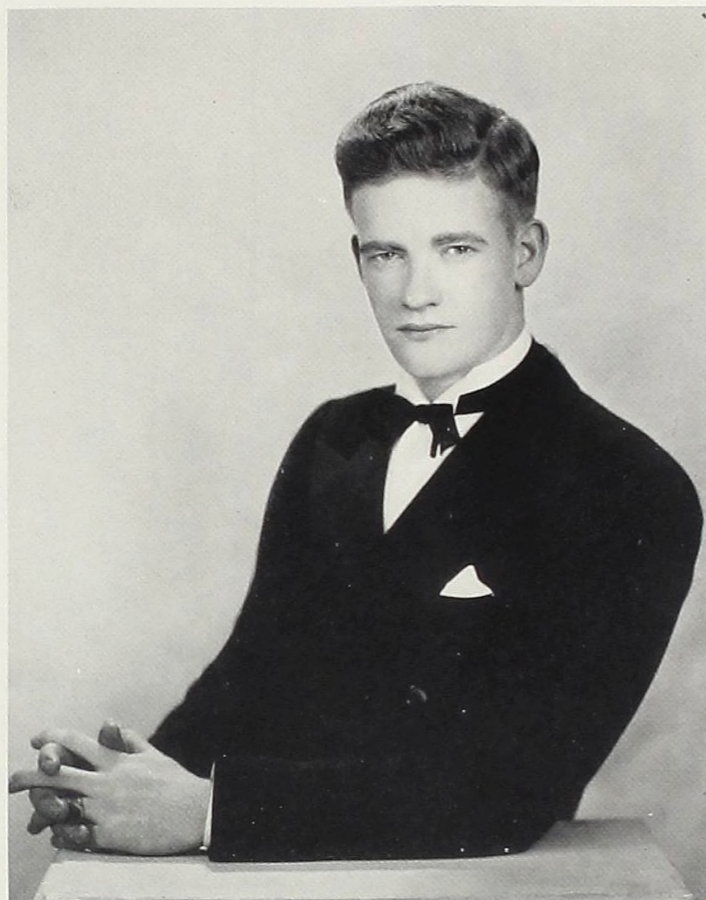
Pennants and megaphones . . . rodeos . . . speed
boats . . . surf boards . . . Jonathan apples . . .
the grinning marble champ . . . curved Gruen
watches . . . The Golden Gloves . . .

DON SMITH



. . . *Most Versatile Boy*

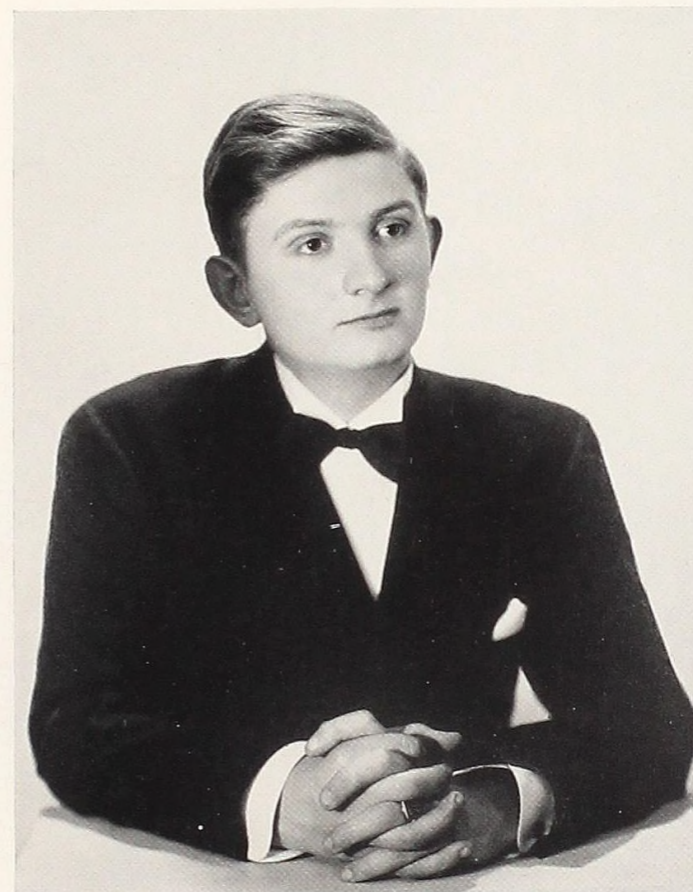
Most Popular Boy



CHARLES LE CLAIRE

Tweed knickers and plaid bow ties . . . brightly lighted bowling alleys . . . Harvard and Yale crew races . . . beer jackets and peppermint sticks . . . overcrowded model T's.

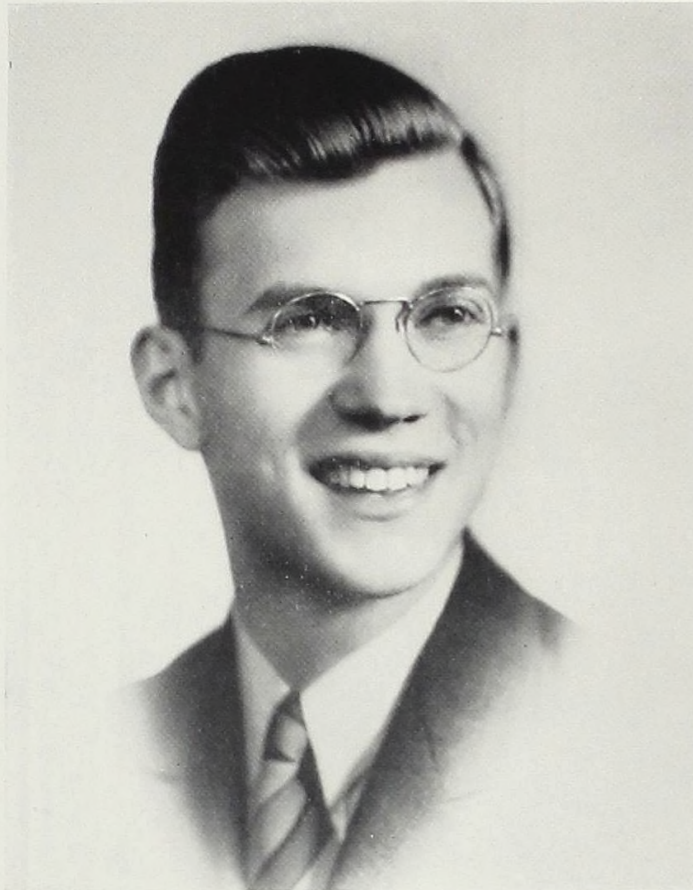
Done Most for College



RUSSELL STAUDACHER

Fitted pigskin cases . . . "The March of Time" . . . brown leather furniture . . . city news stands . . . Schaeffer life-time pens . . . the Stock Exchange at noon.

Most Likely to Succeed



DOUGLAS CLACK

Articles in "Ken" . . . hand-tooled suede-sheepskin
book-ends . . . Doctor Dunning's Library . . . Cu-
nard steamship lines . . . Picasso's blue period . . .
A Yank at Oxford.

JACK SIEG WRITES . . .

Poet laureate of Alma College might well be
our name for that ace rhymist of the senior
class . . . below we present his work . . .



POOR ME

I study hard and get all "A's"
I don't go out for days and days
I haven't any time for sports
I don't think girls look nice in shorts
I go to bed each night at nine
I never let my lips touch wine
I haven't any time for shows
I know as much as Einstein knows
I hate this silly thing called "swing"
I never smoke or anything
I'm glad I never learned to dance
I don't approve of flashy pants
I cringe when I see strapless gowns
I disapprove of noisy towns
I bet I'd be fun at a party.

OH BOY!

Pale and wan
Is his complexion—
Far from what
You'd call perfection;
Cannot sleep—
Afraid of dreaming,
Cannot talk
For fear of screaming;
Hard and fast
His heart keeps thumping;
Into doors
He's always bumping;
Must be love
Is his suggestion
(Love, my eye!)
It's indigestion.

*Their
World*

*"Thy loyal children
Chant thy hymn
of praise"*



EDITORIAL STAFF

MARGARET ARNOLD
Editor-in-Chief

WILLIAM WRIGHT
Associate Editor

HERB SPENDLOVE
Associate Editor

DOUGLAS CLACK
Consulting Editor

CHARLES McLEAN
Sports Editor

AUSTIN BRENNEMAN
Feature Editor

DOROTHY ZIEGLER
Society Editor

Reporters

JACK CRITTENDEN, DEAN
FINK, LOIS GOLDIE, BETTY
DICK, GEORGE DEHORITY

PROF. CARNEY SMITH
Faculty Adviser

BUSINESS STAFF

KENNETH HATHAWAY
Business Manager

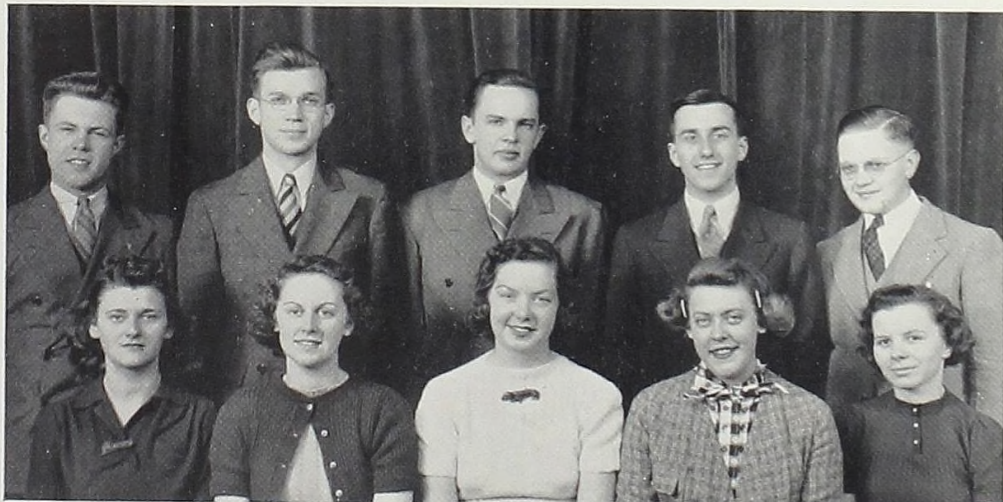
WM. YOH
Assistant Business Manager

FLORENCE TELGENHOF
Assistant Business Manager

MARY ALLEN
Circulation Manager

Top Row, left to right: Jack Crittenden, Douglas Clack, Herbert Spendlove, Charles McLean, Bud Yoh.

Bottom Row: Florence Telgenhof, Lois Goldie, Margaret Arnold, Betty Dick, Mary Allen.



ALMANIAN

EDITED by Margaret Arnold, Traverse City Junior, the Al-
manian has completed another year of news reporting and
commentating. This official news organ of Alma College
has appeared weekly except vacations the entire year, never
having missed a publication date.

Perhaps the two big stories of the year were the address
by Colonel Frank Knox, Alma's most distinguished alumnus,
and the advent of Religious Emphasis week with speeches
by Rev. Benjamin Bush, Presbyterian pastor of Detroit, both
of which the Almanian took in stride in addition to the
numerous stories on and about the campus.

Registering the temper of the student mind on our
campus, the Almanian has proved itself not afraid to take
its stand for some worthy object or against some unworthy
act. Chief columnists this year have been Douglas Clack,
Consulting Editor; Bill Wright, and Herb Spendlove who de-
voted much time and energy for the paper. Some of the
main features included the new type headlines, and the roto-
gravure Collegiate Digest.

Standing out in the point of service to the Almanian are
Business Manager, Kenneth Hathaway, and Circulation
Manager, Mary Allen.



Top Row, left to right: Jack San-
ders, Harold Teak, Mark Todd, Eve-
lyn Wellwood, James Emms, Walter
Ruthig, William Morrison, Anna
Jean Sherman, Ralph Brown, Carl
Wahlsten.

Middle Row: Sidney Kane, Clifford
Carter, Dane Smith, Harry Loper,
James Hercik, Wilson Dunnette, Roy
Anderson, Carvel Clark, Elton Ditto,
Hubert Hill, Joyce Snyder, Chester
Harvie.

Bottom Row: Edith Teak, Robert
Gould, Alfred Lindley, Phyllis Koepf-
gen, Robert Frevert, Robert Spencer,
Gladys Turrel, Marjorie Sutton,
Ruth Kolvoord, Florence McDonald.

CONCERT BAND

THAT music hath charms is undisputed. The helpless child
or the strongest general is captivated by its magic powers.
Alexander the Great was never conquered by man; yet he
was overcome by the wonderful influence of music. It could
draw "tears of iron down Pluto's cheek."

The year of 1938 marked an epoch in the band history of
Alma College. Our alumni, sporting their Scotch blood, gave
out and outfitted our worthy Alma College band with Scotch
Kilties in the Royal McPherson Tartan and now Alma claims
the title of one of the two college bands in the United States,
uniformed in complete Scotch kilts.

Accompanying every student at the halves of our foot-
ball games, parades, and numerous college functions, was
a quickening of his pulse, a returning of a forgotten gleam
in his eyes, and a lift to his heart as he watched the Kilties,
led by Hugh "Flying Stick" Garrison, and supplemented by
the whining shirl of the pipes of Jack Bryce, march on the turf.

And again the Alma College band has given several
concerts and have been acclaimed for their interpretations
of overtures and marches at many occasions. It is a rare
opportunity that the band men have in the privilege that
they enjoy working under a person of such ability in music
as that which is possessed by the instructor, Prof. Jess W.
Ewer.

OFFICERS

WILSON DUNNETTE
President

HUBERT HILL
Manager

PROF. JESS W. EWER
Director



A CAPPELLA CHOIR

SINCE its founding in 1930 by Professor J. W. Ewer, the A Cappella Choir has held its own among the various student organizations until today it stands head and shoulders above the other campus groups, both in accomplishments and membership. The group was started with a merger of the boys' and girls' glee clubs and at its start ran into many difficulties. In the nine years that have followed its birth the Choir today ranks as the fastest growing group on the campus, so much so, that a limit has been extended to the membership, fifty voices composing the personnel. Out of the A Cappella Choir grew the small or Chapel Choir which also enjoys a fine reputation among the musical organizations of the state of Michigan.



Top Row, left to right: M. Williams, H. Teak, H. Lintz, W. Cutler, S. Warner, R. Sterling, C. Carter, J. Sanders, C. Weiss, M. Hultman, J. Birdsall, W. W. Ruthig, E. Blekking, D. Montgomery, R. DeNoyelles.

Third Row: V. Maze, F. Brown, D. Harper, B. Thomas, J. Williams, R. Bendall, R. Trull, D. Smith, E. Morrison, C. Leetsma, W. Morrison, D. Fink.

Second Row: F. Kaufman, H. Orvis, B. Reigelman, M. Sutton, M. Holmes, P. Koepfgen, D. Lindke, H. Moon, M. Allen, E. Reavie, L. Wheatley, R. Lyons, R. Kolvoord, J. Fraker, F. Ingersoll, E. Teak.

Bottom Row: M. Goodwyn, E. Carrier, N. Dodge, A. Arnold, L. Robinson, J. Bird, G. Glass, A. Ludwick, J. Schaafsma, J. Davidson, C. Hamilton, M. Harrison, V. Bernecker, J. Simmons.

Besides presenting its annual spring and winter concerts the Choir presents Chapel programs, High School assemblies and other civic appearances. This spring the large choir went to Chicago for a trip and tour of high schools. In March the Chapel Choir went for an extended concert tour of upper Michigan and Upper Peninsula cities.

STRING ENSEMBLE



Top Row, left to right: Julia Schaafsma, Mavis Harrison, Henry Broughall, Florence McDonald, Miss Nelson.

Bottom Row: Dean Fink, E. Wellwood, G. Bronson, J. English, L. Robinson, M. Tangalakis, A. Breneman.

IN RECOGNITION

MISS Mae Nelson, newcomer to the Music department faculty has already distinguished herself in a broad manner by her winning of the Michigan Composers Club annual award for the best composition by any Michigan composer during 1938. Miss Nelson entered a series of twelve songs based upon translations of Chinese poems by Professor R. W. Clack, Alma Mathematics professor and a recognized poet of rank in the state also. Her compositions were entered in the national competition, the results of which have not been made public. To Miss Nelson goes credit for organizing and maintaining the string ensemble which became a part of the college musical picture late last fall.



DEBATERS

Men's Debate Squad:

Top Row, left to right: George Jennings, Owen Smith, Peter Cicinelli, Charles Weiss, Bruce Lindley, Lynn Wilson, Mark Todd.

Bottom Row: Harold Draper, George DeHority, Charles LeClaire, Prof. Carney Smith, Marvin Koffman, Bruce Melinger, Sidney Kane.



REALIZING the importance of the study of speech as a necessary adjunct to a broad and liberal education, the authorities this year have determined to put a Speech Department of the College on a firm and practical basis. With this purpose in view, Prof. Carney Smith, graduate of Western State Teachers College and Masters School at Ann Arbor, and for the past few years at Flint Northern High School, was engaged as Professor of Speech at Alma College.

As one of his new acts, Prof. Smith organized the first Women's Debate team in the history of the College. All five girls of the team represented Alma at the Huntington College National Intercollegiate Debate Tournament.

A Men's Debate squad of sixteen men was organized with the aid of only two veteran debaters, Homer LeClaire and Marvin Koffman. The question that confronted the debaters this year was—Resolved: That the Federal Government Should Cease Expenditures of Public Funds (including credit) for the Purpose of Stimulating Business. Debates were with Michigan State College, Albion, Hope, Calvin, Western State, Michigan State Normal, Central State, Kalamazoo, and the University of Detroit.

With the girls' team, the men's squad represented Alma with eight teams, this year, as to two team of last, at the National Intercollegiate Debate Tournament. Notable achievement was the win scored by the men debaters over the University of Indiana Law School.



Top Row, left to right: Dane Smith, Dean Fink, Sheldon Hastings, William Prescott, Charles Weiss, Alfred Jenkins, Joseph Blata, Louis Ohliger, Prof. Carney Smith.

Middle Row: Harold Draper, Anita Byron, Marian Wynton, Eileen Sullivan, Mary Goodwyn, Katherine Weavers, Lois Goldie, Margaret Ann Elliot, Muriel Wert, George Jennings.

Bottom Row: Louise Black, Florence Brown, Margaret Arnold, Willis Gelston, Constance Hamilton, Effie Prescott, Jeanne Speerstra, Florence Telgenhof.

DRAMA CLUB

THE Drama Club of Alma College was founded in 1925 "for the purpose of stimulating interest in student dramatics." Last year the club was an all-college organization, which was changed this year to a club of limited membership.

With only nine players from last year, the Drama Club easily filled their quota of members, with waiting rolls also filled. As a result the Club has been one of the most active on the campus, presenting several Chapel productions and presenting their annual fall and spring plays, both outstanding successes.

Prof. Carney Smith, new member of the faculty, has given outstanding help to the club, aiding in directing and giving general advice where needed.

The Alma College Drama Club is affiliated with Alpha Psi Omega, national honorary dramatic society, membership to which is offered to players of outstanding ability.

OFFICERS

WILLIS GELSTON
President

PETER CICINELLI
Vice-President

LOIS GOLDIE
Secretary

JEANNE SPEERSTRA
Treasurer

CARNEY SMITH
Faculty Adviser



Carra Jones

Shirley Lahaie

Katherine Weavers

Mary Baker

Ruth Wille



GERMAN CLUB

Top Row, left to right: Charles Climie, Hugh Cook, Robert Garthwaite, Donald Loveland, Walter Ruthig, Donald Montgomery.

Middle Row: Max Cook, Gerald Blumeneau, Margaret Ann Elliot, Margaret Arnold, Louise Black, Lester Hardy, Earl Bleking.

Bottom Row: Charles Meach, John Foster, Fritz Ohliger, William Follis, Jean Williams, Walter Brieden, Ed. Baklarz.

THE conditions of the German government and its policies with our American government and the conditions, habits, and customs of the German people in contrast with our own is a lively subject, because of the differences between the two countries. For that reason the interest in Der Deutsche Klub has been especially high, the club having more than thirty active members, each promoting timely discussions on these topics.

The first gesture towards the success of the club was the election of William Follis and John Foster who have introduced many different subjects and speeches, as president and vice-president."

Dr. Theodore Schreiber, Professor of German and ex-officio member, spoke at one of the first meetings on "Germany as a Democracy," stressing the point that the basis of German democracy is one of economic freedom while the American conception is one of political freedom.

OFFICERS

WILLIAM FOLLIS
President

JOHN FOSTER
Vice-President

JEAN WILLIAMS
Secretary

LOUIS OHLIGER
Treasurer

PRE-MEDIC CLUB



Top Row, left to right: G. Jennings, C. Harvie, G. Jordan, H. Cook, C. Climie, D. Montgomery, F. Ohliger, C. Hoogerland.

Middle Row: J. Williams, A. Byron, F. Ingersoll, M. Arnold, B. Bahlke, S. Lahaie, J. Ward.

Bottom Row: D. Loveland, A. Schmidt, C. Meach, H. Lintz, W. Smith, W. Brieden, R. Garthwaite.

THE Pre-Medic Club is open to any student at Alma College who is interested in the study and discussion of medicine. Under the leadership of President Herbert Lintz, the club has carried on many and varied projects, this year, which have proved both interesting and educational. Various speakers, moving pictures, book reviews, and open discussions have made up the program. Other officers are Albert Schmidt, vice-president, and Jean Williams, secretary and treasurer.

THE International Relations Club, one of the oldest in term of organization on the Alma campus, has continued its valuable work on the discussion of the foreign affairs. At each meeting, held every other Tuesday, a member discusses an aspect of the world situation, which is followed by a forum of the club as a whole.

Delegates were sent by the I. R. C. to the state conference held at Ann Arbor, and to the International conference held at Northwestern University at Evanston, Illinois.

The club is connected with the Carnegie Foundation. Dean Florence M. Steward is faculty adviser.

INTERNATIONAL RELATIONS CLUB

OFFICERS

DOUGLAS CLACK
RICHARD NEVILLE
Presidents



Top Row, left to right: Wm. Yoh, George Jennings, Harold Draper, Marvin Koffman.

Middle Row: Chester Harvie, Anita Byron, Betty Hamilton, Margaret Arnold, Marian Winton, Richard Bendall.

Bottom Row: Charles Meach, Douglas Clack, Alfred Jenkins.

PHI SIGMA PI



OFFICERS

DOUGLAS CLACK
President

JULIA SCHAAFSMA
Vice-President

Left to right: Douglas Clack, Julia Schaafsma, Kathryn Lake, Anita Byron, Bob Spencer.

BEING founded in 1928, Phi Sigma Pi, Alma's honorary scholastic society is but a comparatively recent organization. It is one of the smallest and select groups at Alma. Entrance requirements are fixed on a sliding scale, the lowest being a grade of under 2.35. Its main purpose is to encourage and promote scholarship, and membership in the organization can never be more than one-eighth of the graduating class.



Top Row, left to right: Jack Sieg, Charles LeClaire, Wm. Follis, Alfred Jenkins, Gilbert Runkel, Webster Cutler.

Middle Row: Austin Brenneman, Francis Seavitte, Jack Crittenden, Kay Pesek, Hester Moon, Edward Welter, Chester Harvie, Harold Teak.

Bottom row: Betty Dick, Betty Reed, Herbert Spendlove, Russell Staudacher, Richard Bendall, Eileen Sullivan, Lois Goldie.

STAFF

- RUSSELL STAUDACHER
Editor-in-Chief
- HERBERT SPENDLOVE
Associate Editor
- JACK CRITTENDEN
Sports Editor
- EILEEN SULLIVAN, JACK SIEG
Features
- HAROLD TEAK, HESTER MOON,
KAY PESEK
Classes
- ALFRED JENKINS, AUSTIN
BRENNEMAN
Organizations
- BETTY DICK
Art
- EDWARD WELTER, CHESTER
HARVIE
Photography
- CHARLES LECLAIRE, WM.
FOLLIS, FRANCIS SEAVITTE,
WEBSTER CUTLER
Reporters
- RICHARD BENDALL
Business Manager
- STEWART McFADDEN
Advertising Manager
- LOIS GOLDIE
Subscriptions
- FLORENCE TELGENHOF
Advertising

SCOTSMAN

AFTER the appearance of the Scotsman of last June a storm of protest and indignation arose of such proportions that the publishing of the yearbook was taken over by the college itself. Under the active direction of Mr. Erdman a staff was selected and Russell Staudacher, senior from Saginaw, was again elected to take over the duties of editor. Richard Bendall, another retention from the "38" edition was placed at the head of the Business Managership.

Under the direction of Lois Goldie the subscription campaign advanced despite opposition from various sources and the sales of the book mounted until it was apparent that over 375 copies would be sold to students alone. An innovation of last year, that of giving the various larger high schools complimentary copies was carried over again with copies going to over one hundred schools.

A new theme was carried out in the edition, and popularity contests were substituted for the Hall of Fame of last year.

Henry Fonda, popular movie star, was selected for the honor of choosing the three prettiest Alma girls. His results are shown elsewhere.

The chief aim of the Scotsman was to present a pictorial view of the events of the year which has just passed. The editors feel they have done this.

THE STUDENT COUNCIL

FOUNDED in 1919 in order that the student body might have a voice in the affairs that affected them, the Student Council has represented student government, law and order, and discipline, ever since with the reigns of government resting in the hands of those elected by the four college classes each spring.

The Council has for one of its duties the disbursement of funds paid into the student activity fund, the delegating of which takes considerable time. The Council also worked closely with Dr. Dunning the past year and several times the group met in joint session with the Senate of Wright Hall when questions concerning the actions of men and women students were under discussion. New rules regarding dating were offered by this joint body in March.

The Council also sponsors various dances throughout the year, all of which are open to the student body without an admission being charged. These affairs are informal and proved to be the most popular type of party given during the past season.

Freshman discipline again returned to the campus in a somewhat modified form and this work was ably directed by Student Marshall, George Purdy.

OFFICERS

- CHARLES SKINNER
President
- HESTER MOON
Vice-president
- MORLEY WEBB
Treasurer
- MAVIS HARRISON
Secretary
- GEORGE PURDY
Student Marshall



Top Row, left to right: Lee Clack, John True, Clifford Carter, Walter Brieden.

Middle Row: George Purdy, Charles Skinner, Harold Teak, Morley Webb, Thomas Purdy.

Bottom Row: Louise Black, Hester Moon, Professor Hamilton, Mavis Harrison, Frances Kaufman.

We're Proud To Present



Dear Mr. Staudacher:

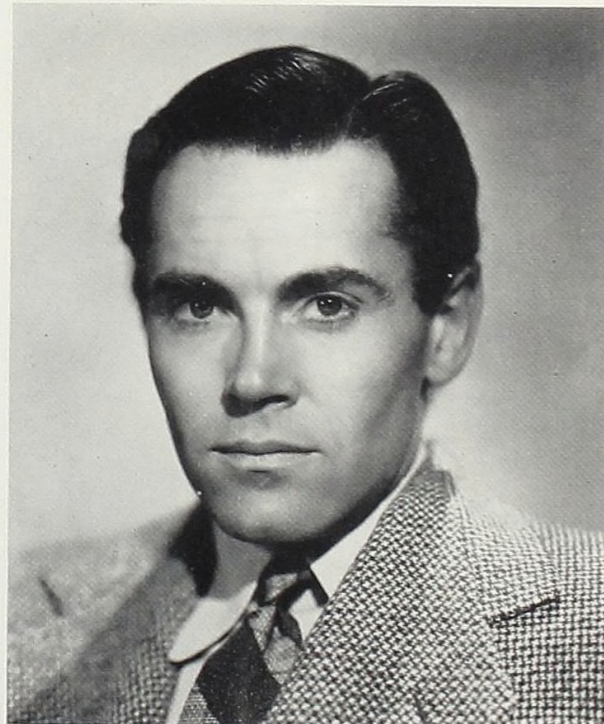
I want to thank you for the opportunity of serving as a judge in your annual beauty contest, albeit I must plead innocent of any pretense of being a judge with qualifications.

It was fun and I hope I won't be the object of a scalp hunt as the result of my selections. It is always difficult to try and pick winners from mere photographs, when personalities play such an important part in beauty.

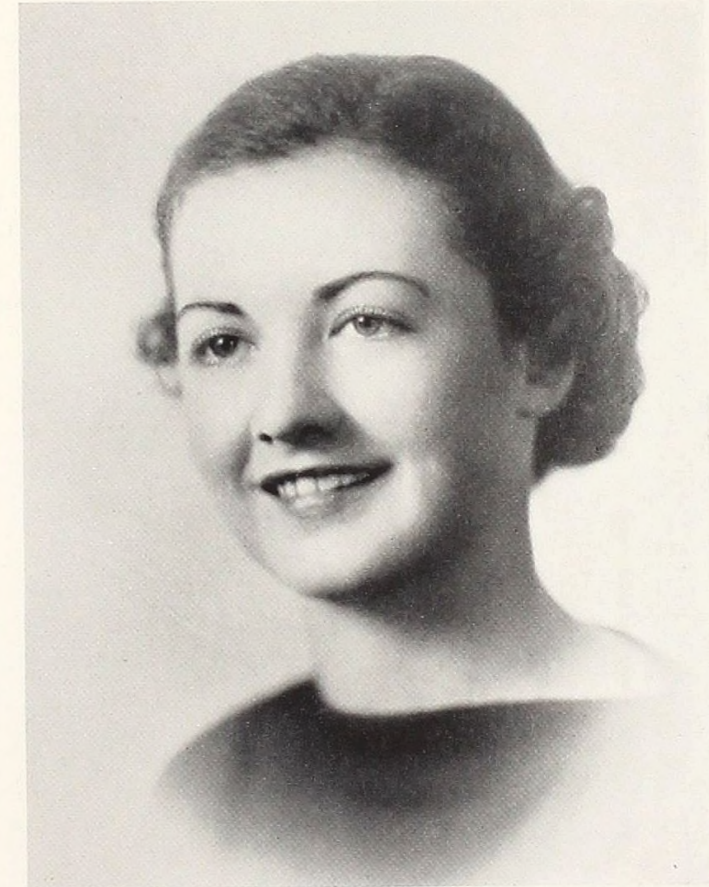
Sincerely,

1. Jeanette Davidson
2. Amelia Arnold
3. Frances Friedrich

LAST year the celebrated artist, George Petty, was selected as the man to pick the ten prettiest girls among the Alma coeds . . . In searching for a man to do the task this year, the editors decided to ask Henry Fonda, erstwhile movie star, to do the job . . . and to their surprise Mr. Fonda replied in the affirmative . . . the photographs were assembled and Mr. Fonda went to work with the following pictorial results . . .

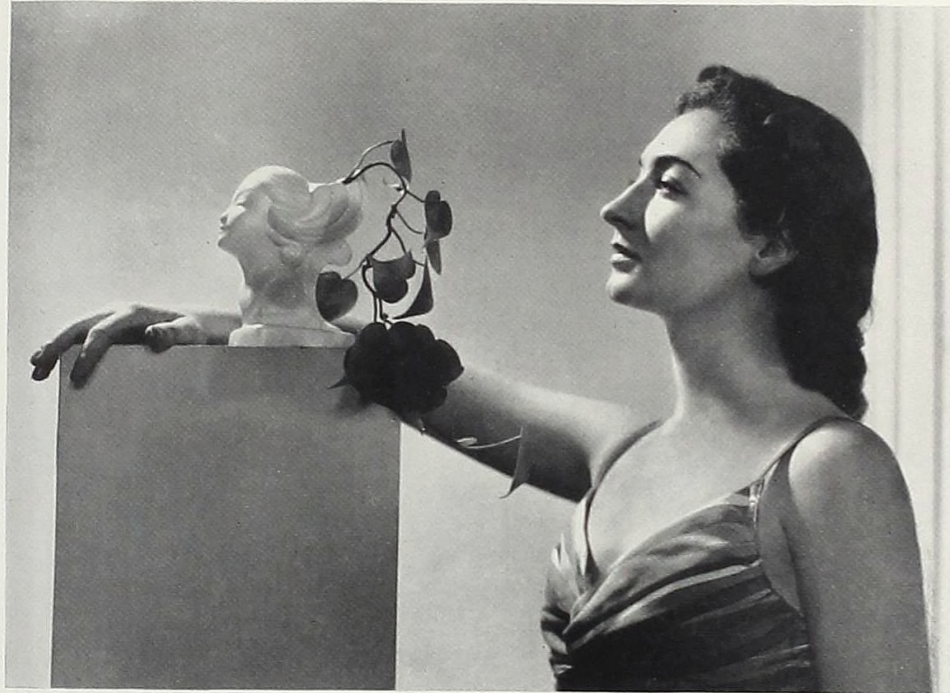


Miss Alma



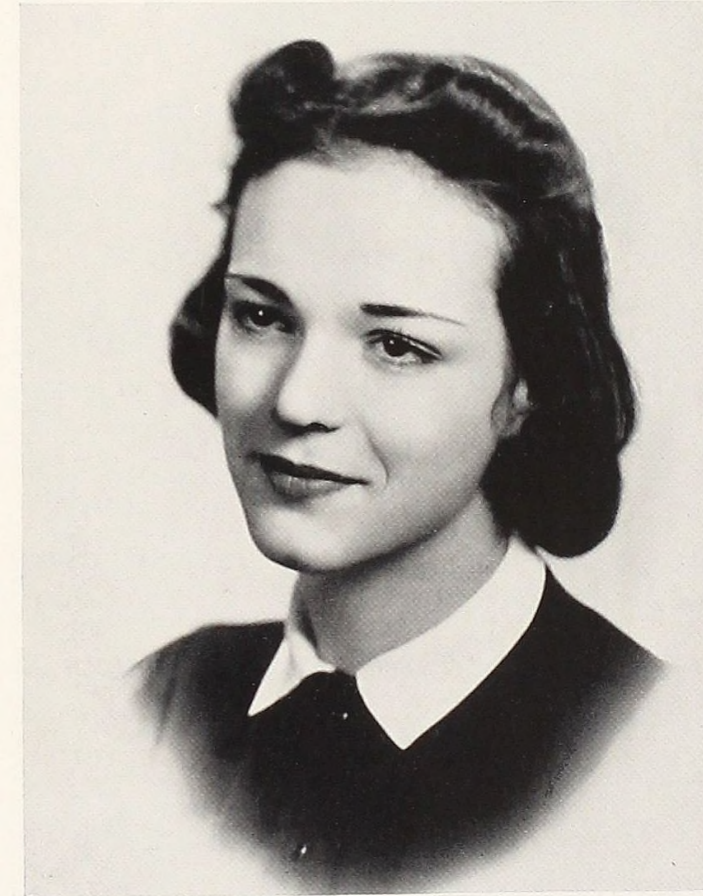
Jeanette Davidson

Number two . . .



Amelia Arnold

To show . . .



Frances Friedrich

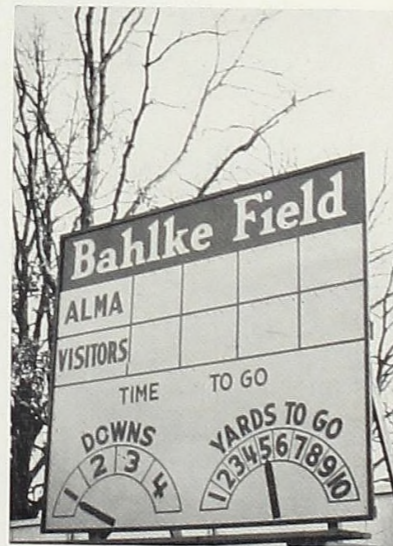


In the years since its establishment in 1887, over half a century ago, Alma College has stood for the highest in moral and educational stand-

ards. Today, this institution stands ready to accept any challenges with regard to superiority in the smaller college field of the State of Michigan. . . . Alma has not only reached its point of actual student capacity but further — they have set out on an extended program of expansion, building and progression that will put Alma College well up towards the top rank of colleges of corresponding size in the United States. . . .

Write the Registrar at the College for descriptive folders, pamphlets and the 1939 Catalogue. . . .

ALMA COLLEGE
Alma, Michigan



CALENDAR

CALENDAR FOR 1938 - 1939

September

- 19—(Freshman Day) 165 vacant stares, 330 damp eyes and the freshmen are here.
- 20—(Still Freshman Daze) "Do I have to take Bible?"
- 21—(Registration) A few students are back . . . the upperclassmen register . . . I am Carrol Jones, who are you?
- 22—The first chapel—the faculty parades.
- 23—Frosh stag dance . . . upperclassmen learn the Barnyard Stomp and the Sailor Swing.
- 24—"Nice trip to Miami . . . we didn't score . . . back home tomorrow."
- 25—Everybody in church . . . almost like Easter . . . Vic's a good cook.
- 26—Dirty work going on . . . and rushing hasn't even started yet.
- 27—Carney Smith tells good stories.
- 28—Girls swiped . . . Faculty table beautifully attended by Betty Thomas.
- 29—Tag tagged Otta.
- 30—Woodrow Wooley buys his chapel seat.

October

- 1—Alpha Theta Mixer.
- 2—Dane Smith out with Knowles again.
- 3—Runkel and Roth . . . nice combination.
- 4—Nice looking men playing frosh football.
- 5—Freshmen girls thoroughly squelched by initiation . . . "Thally" did all right with that vacuum cleaner.
- 6—Pep meeting for Albion game . . . the Kilties . . .
- 7—Verna is good looking . . . Lee thinks so too.
- 8—Flag rush—Chuck Weiss wins for Frosh . . . Kappa Iota Pirate Party . . . tie with Albion.
- 9—Al's the one with the mole.
- 10—Art Russell and Janie Fraker together again.
- 11—Russ Alles dates Carra.
- 12—Choir sings at Synod in Sagbag.
- 13—Bonfire . . . Jordan's voice is changing.
- 14—Scots beat Olivet . . . night game . . . dance . . . Giles meets Reavie.
- 15—Art Smith dates Carra . . .
- 18—Another Almanian.
- 19—Mary Brunner out with Bob Richardson.
- 20—Pajama Parade . . . Lulu's first appearance.
- 21—Pete Cicinelli and Phyllis Koepfgen dance well together.

Eileen Sullivan
Lois Goldie

- 22—Alpha Theta Rushing Party—hayride.
- 23—Hugh McElwee and Marion are going steady.
- 24—Betty Thomas head of girls' athletics.
- 25—Philos win scholarship cup.
- 27—Bob Digby and Jane Anderson together.
- 29—Scotties win night game . . . Carra crowned Homecoming Queen.
- 30—Homecoming.
- 31—Two new college buses.

November

- 1—Martha Knowles still can't make up her mind.
- 3—Gene, Fran, Mitch and Millie get ducked.
- 5—A change in Becker and Reed? Scots beat Adrian 31 to 0 . . . Philo Japanese Party.
- 8—Ducky Smith and Marion Haas.
- 9—Zeta Smoker . . . Wooley and Kay Weavers win Extempore Speaking Contest.
- 10—Frank Knox speaks in chapel . . . Zeta banquet.
- 11—Last game of season, Kazoo wins 6 to nothing.
- 15—Girls pledge.
- 19—Phi Phi Alpha Smoker . . . Philo Fair.
- 21—Varsity Fred Hartt makes the Almanian.
- 22—Frosh Frolic.
- 23—What is this between Gladys and Bill Follis?
- 24—Alma Ludwick and Bob Adams and John True.
- 27—Conger seems lonesome.
- 29—Unstad's wife is a beauty.

December

- 2—Hugh Cook in shorts . . . "Growing Pains" put on by Drama Clubbers.
- 5—Frats pledge.

The Varsity Shop

"Just for Sport"

BOOKS
ATHLETICS GOODS
STUDENT SUPPLIES
TYPEWRITERS

E. R. MOORE CO.

Cap and Gown Rentals

126 W. Superior St.

Phone 66

- 7—Satch Sherman is on a liquid diet.
- 8—"Men and women should see less of each other."
- 9—Jack Lea and Beverly Riggleman look serious.
- 10—Zeta Formal at Hotel Bancroft . . . Philo Fair.
- 12—Y. W. Christmas Party . . . were those kids dirty . . . Red plays Santa Claus.
- 13—Purity Wright's biography written by Barstow.
- 14—Choir Christmas Concert.
- 16—Phi Christmas Party . . . Dane Smith and Betty Thomas truckin'.
- 17—School's out . . . breathing spell.

January

- 1—Wow.
- 2—I recognized my mother this morning.
- 3—Fast trip back to Alma in an ambulance.
- 4—Museum and library steps crowded again.
- 5—So Verplanck is married, well, well.
- 6—Mavis and Cliff smashed on the rocks . . . Delta Gamma Tau banquet.
- 7—We beat Adrian.
- 8—We lose to Ypsi.
- 10—Eddie Reavie gets tripped in gym . . . good meal, Dunning's guests.
- 11—Mavis and Cliff together . . . smooth sailing.

**ALMA COLLEGE
MEMBERS OF THE FACULTY
AND STUDENTS**

We appreciate the opportunity of having served you for years.

We trust our future efforts merit a continuance of your valued patronage.

THE W. D. BALTZ CO.

105-109 W. Superior Alma, Michigan

STOVALL STUDIO

We appreciate
the opportunity

of

**Serving Alma College
As Official Photographers**

- 12—Sally's found a kindred soul, Owen Smith . . . Debaters look good at Hope.
- 13—Flash . . . Jean Mitchell out with Sam Seavitte.
- 14—Scotties wallop Western State.
- 15—Something new . . . Junior's found Phyllis at long last.
- 16—Martha's made up her mind . . . it's Bud.
- 17—Tinker Kirby's got something there, doncha think so?
- 18—Johnny Mathews takes out Verna.
- 19—Red LeClaire and ? Lindley entertain in chapel.
- 21—Don Smith and Angus elected football co-captains at banquet.
- 22—Waste baskets burn up in Wright Hall . . . so did Mrs. Hutton.
- 23—Muriel and John Foster are now going steady.
- 24—Carrol Jones can't get Hester off his mind.
- 25—Ramsey's first date . . . Effie Prescott.
- 26—Gladys Turrell has a social cut taken for making noise . . . Hallalujah.
- 27—We lose to Hope.
- 28—First evidence of a new triangle . . . Ginny Hardgrove, Dot Lindke, and Keith Carey.
- 29—Big Blizzard.

Sold by
**LITTLE ROCK LUMBER AND COAL
CO.**

"WHERE SERVICE IS A HABIT"

Phone 246 Alma, Michigan

KENTUCKY BLUE BELL COAL

Mined and Shipped

by

Carrs Fork Coal Sales Co.
Portsmouth, Ohio

February

- 30—Finals begin . . . woe . . . woe . . . woe.
- 31—Margaret Arnold resigns.
- 4—Prof. Rice gets married and everything goes off all right.
- 7—New semester . . . 'Im still here . . . Pop says I won't be next semester.
- 8—"Legs" Watson arrives . . . Hot Lips.
- 9—"MacBeth" . . . Harrison, Sullivan and Speerstra shine . . . girls debate for the first time.
- 10—Dugal gives back the diamond, yea, Alma.
- 11—Phi Formal . . . Conger has carburetor trouble.
- 12—Lou Friedrich and Goldie decide to go steady . . . What? No.
- 13—Louise Black and Heinie Adams out tonite.
- 14—Everybody got valentines . . . I got a bill from the college.
- 15—The Flu flew in . . . Anita and George DeHority win oratory contest.
- 16—Doctor and Mrs. Dunning leave for Florida.
- 17—Half of Wright Hall sick . . . the plague rages . . . why are my profs immune . . . cemetery night for the Phis.
- 18—Cap Merris in town, out with Lockart.

CONGRATULATIONS TO THE
CLASS OF '39

Bickert's

LADIES' APPAREL

CHURCH JEWELRY CO.

Be on time all the time with a watch from

Church's

PERFECT DIAMONDS

A Gift of Beauty is a joy forever

Superior at State

Phone 237

Compliments
of

•
**Consumers
Power
Company**
•

- 19—Cap out with DeElta.
- 20—Jack Bryce and Clare Spears still in prison.
- 21—Is Bob Patterson leading Evelyn Wellwood on?
- 22—Bob Fulton and Ruth Niles begin to look serious.
- 23—Frosh beat Central State.
- 24—Rubenstein concert in Saginaw.
- 25—Women's League Formal . . . Hardgrove defeats Lindke . . . Fred Hill and Neva Dodge.
- 26—Ping Pong is all the thing in Wright Hall . . . Judy, Ludwick and Sully look pretty good.
- 27—Mrs. Penfield educates the girls . . . the boys educate Dr. Penfield.
- 28—Estelle Watson has snared MacGarvah.

March

- 1—The lion roared.
- 2—Wright Hall girls exhibit their housecoats in chapel.
- 3—The scaffold's a nice entrance, too.
- 4—Student council dance . . . Sid and Sully again.
- 5—Snow again . . . and I thought spring was here.
- 6—MacElwee is sick again, Prof. Kaufman.
- 7—Bert Katzenmeyer isn't over the week-end yet.
- 8—Teak pursues Dane pursues Wheeler pursues Garrison pursues Hicks pursues King, King can't make up his mind.

- 10—Boxing matches . . . black eyes predominate.
- 11—Varsity Swing . . . smooth band . . .
- 14—Mack thinks Bill Ramsey is all right, so does Bill.
- 15—Evelyn out with Spook Patterson again.
- 16—"Call It A Day" in chapel.
- 17—Russ and Kay's third anniversary.
- 18—Bill Wright and Betty Lockhart.
- 20—Spring is here . . . love around the corner.
- 22—Baseball is in the air, fourteen games scheduled.
- 23—Speerstra decides on a radio . . . hello, Willie.
- 26—Gladys takes another try at Ralphie.
- 28—Roller skates appear . . . bicycling in shorts will be next . . . brrrr.
- 30—Spring football practice pretty soon.
- 31—March went out like a lion, too.

April

- 1—Did I fool my profs. . . didn't go to classes . . . Vacation starts.
- 11—Vacation daze over.
- 12—Fran and Ed plan an extension to the library steps.
- 13—MeJean beats Duck Smith at jacks.
- 14—Sure enough, bicycles appear.

Compliments of

**Dickinson's
DRUG STORE**
•

SPECIALISTS IN BEAUTY

We have dedicated ourselves
to the glorification of the Alma
College Girl

•
Ione's Beauty Shop

PROFESSIONAL DIRECTORY

DR. E. R. REMSBERG

OSTEOPATHIC PHYSICIAN

116½ E. Superior St.

ALMA, MICHIGAN

DON M. HOWELL, M. D.

EYE, EAR, NOSE, AND THROAT

Pollasky Building

ALMA, MICHIGAN

CHAS. F. DUBOIS, M. D.

Pollasky Building

ALMA, MICHIGAN

F. J. GRAHAM, M. D.

B. J. GRAHAM, M. D.

K. P. WOLFE, M. D.
•

Pollasky Building

ALMA, MICHIGAN

PAUL R. CASH

ATTORNEY - AT - LAW

Pollasky Building

ALMA, MICHIGAN

CHARLES H. GOGGIN

ATTORNEY - AT - LAW

Pollasky Building
•

ALMA, MICHIGAN

MONTIGEL and KNORR

ATTORNEYS - AT - LAW
•

ODE TO A STORK

My friend, you do your work quite well
And seldom lag behind,
But, darn it all, there's one great fault—
You have a one track mind.

—Sieg

- 15—The Double R. still going strong . . . wait till Crystal and Bass open.
 19—Wiener roasts are fun.
 21—What a golf team we've got.
 23—Must be the weather . . . everyone in church.
 25—Dugal and Red still going strong.
 27—Ulysses Grant's birthday.
 29—Tomes has still got that lease on the telephone when Sally Reed's not around.
 30—Marv Kaufman gives Bert competition on the golf course.

May

- 1—Tennis courts are the new spooning spots.
 2—They say Ziegler's engaged.
 3—Nobody shows up for play practice.
 4—Is my room hot this morning, maybe it's me.
 6—Are Ed Riggs and Gene Lewis broken up or aren't they?
 8—Picnic at the Lumberjack camp . . .
 10—Oh, how I hate to get up in the morning.
 12—J-Hop . . . no Bass Lake this year.
 13—Philo Formal . . . golf course was muddy.
 15—I won't go swimming . . . it's too cold . . . anyway the moths got to my suit before I did.
 16—Everybody's resting up for tomorrow . . .
 17—Campus Day . . . everyone is back . . . even Parker Lofthouse.
 18—Resting up from yesterday.
 20—Alpha Theta Formal . . .
 22—You should have seen Trudy when she came in tonite.
 25—Sun baths on the roof are frowned upon and stared at.
 27—Kappa Iota Formal . . .
 30—Memorial Day . . . no classes.
 31—Warren Hartt gives Garthwaite some competition.

faithful to our
 trust since 1880

FIRST STATE BANK

ALMA, MICHIGAN

Federal Deposit Insurance Corporation

MOTORS GO FOR IT

Leonard Gasoline Leonard Ethyl

Produced by Michigan's Most
 Modern Up To Date Refinery

Leonard Refineries Inc.

Alma, Michigan

Compliments of the

Strand Theatre

CENTRAL MICHIGAN'S
 FINEST THEATRE

Compliments of

F. C. Mapes Hardware

Alma, Michigan

GOVER'S

MT. PLEASANT, MICHIGAN

SCHOOL SUPPLIES —
 ATHLETIC EQUIPMENT

Our Salesmen and Catalogs
 Go To All Michigan Schools

Gover's Central Supply Co.

Mt. Pleasant, Michigan
 at Campus of Central State Teachers College

June

- 1—Oh, it's beautiful out.
 3—Bass again, boys?
 4—Everyone puts trust in prayer . . . finals coming.
 6—Scott and Simmons are in love.
 7—Everyone starts studying.
 9—Finals begin . . . ponies trotted out.
 10—Got crossed up again on Psychology, I'll swear in fact, I did.
 11—Baccalaureate.
 12—More finals . . . Doc Schreiber has keen eyes.
 15—Senior class day.
 16—President's reception.
 17—Commencement exercises . . . I hate to see them go.
 18—See you next semester.

ODE TO A FRENCH BOOK

Your cover's cute, you're printed well,
 But you keep students mopin';
 Consensus of opinion is
 You're nicer closed than open.

—Sieg

Compliments of

CLARK'S STORE
 FIXTURES

Institutional and Equipment Co.

1025 Harrison St.

FLINT, MICHIGAN

'27 COMES TO LIFE

I'm a dementia-precox—
 At least, the teachers say.
 I never tax my intellect;
 I'd rather "swing and sway,"
 I procrastinate my studies—
 Who cares what old Bill Shakespeare wrote,
 Or who was General Howe?
 They say my mind is retrograde,
 But I know it's not such—
 'Cause I know how to deal a hand
 That's better than a "flush."
 They think that I'm not "sine que non,"
 And that I fabricate—
 Because the "profs" will not accept
 The reasons why I'm late.
 The fulgent ones can laugh at me,
 And say my head's fabaceous.
 The only reason they get "marks"
 Is 'cause they're so loquacious.
 Believe me, friend, I am not dumb—
 Perhaps I am a "scud"—
 Some day I'll be a great big oak,
 But now I'm just a bud.

—By Mr. Anonymity

ODE TO A LAMP POST

The dog, you know, is man's best friend
 And always I'll admire
 The clever way he puts you out
 Whenever you're on fire.

—Sieg

ODE TO A BACKLESS GOWN

You always draw adoring looks
 When you are worn, I've found—
 But what a furore you would cause
 If you were turned around.

—Sieg

MEISEL HARDWARE AND SUPPLY CO.

Bay City, Michigan

WHOLESALE and RETAIL
 BUILDERS HARDWARE
 MILL SUPPLIES
 ELECTRICAL SUPPLIES

BEST WISHES TO THE CLASS OF '39

The UNION TELEPHONE Co.

Management and employees of Alma, Michigan



NEW CHEF

THE start of this college year saw the installation of a new Italian Chef in the college kitchen. He is Mr. Victor Manzulla, formerly of the Kellogg Health Foundation of Battle Creek and chef for many large hotels throughout the state. Fortunate in securing Vic, his coming also meant complete revolution in the equipment of the kitchen. Everything was painted white, a roomsize iceless refrigerator was installed, new ranges, new pie ovens, electric-gas toasters, modern steamers, potato mashers, new steam-tables, coffee vacuators, modern dumb waiters, new dishes and many other additions came to the downstairs kitchens. Vic added training tables and special rooms in the basement for the varsity players and the swipes. Also new to the student body was the manner in which Vic responded to requests for banquets, birthday parties, and other special occasions. Never was anyone refused and always the event turned out better than had been anticipated.

Compliments of

LOBDELL-EMERY COMPANY

Alma, Michigan

Manufacturers of

Bicycle Rims

Bicycle Saddles

When it's a question of—

GOOD PRINTING

THE ANSWER ALWAYS
IS HERE!

Phone
Dial 34-321

ENTERPRISE PRINT SHOP

MT. PLEASANT

THE WORLD'S LARGEST
GYMNASIUMS
FINISHED
WITH

HILLYARD'S FLOOR FINISHES
ROY B. STANFIELD

**HILLYARD SALES
COMPANY**

P. O. Box 544

Battle Creek, Mich.

Alma College received a permanent Business Manager when Mr. William Ellis of Chicago, accepted the offer of the Board of Trustees, and came to the college in the middle of April. He succeeded Mr. William Erdman who had replaced Mr. C. R. Robinson last summer.

Mr. Ellis was formerly with the Federal Reserve Bank of Chicago and is a graduate of Chicago Kent College of Law and the University of Chicago. During the war he was associated with the Aviation branch of the Navy in an advisory capacity.

Mr. Ellis' picture appears on page eleven.

BOARD OF TRUSTEES



Chairman
REV. S. H. FORRER
D. D.
Detroit

CLASS OF 1939 . . .



DEAN J. B. EDMONSON
Ann Arbor



PROF. K. P. BROOKS
Mt. Pleasant



HARWOOD GILBERT
Saginaw

Without picture—MRS. W. A. BAHLE, Alma

Compliments of a Friend of

Alma College



Compliments of—

ALMA DAIRY

PASTEURIZED MILK AND CREAM

Modern Dairy Bar that caters to
the Students

A. T. Sholty, Prop.

When you think of flowers
think of—

CAPLE'S FLOWERS

"Alma's Favorite"

DON WALSH, Proprietor

TRUSTEES

CLASS OF 1940



C. H. BENNETT
Plymouth



C. W. BONBRIGHT
Flint

Without picture—W. M. HAZEN, Three Rivers

ODE TO THE HOLE IN A DOUGHNUT

The wide belief that you aren't much
Is, I believe, well founded.

You may not be so much yourself,
But boy—are you surrounded!

—Sieg

THE BANCROFT HOUSE

Saginaw

SOLICITS THE PATRONAGE
OF
ALMA COLLEGE

Cafe
Coffee Shop
Private Dining Rooms

EAST SIDE DAIRY

Pasteurized Cream and Milk

Complete line of Dairy Products

Wayne E. Devereaux, Owner

Phone 242

Alma, Michigan

TRUSTEES

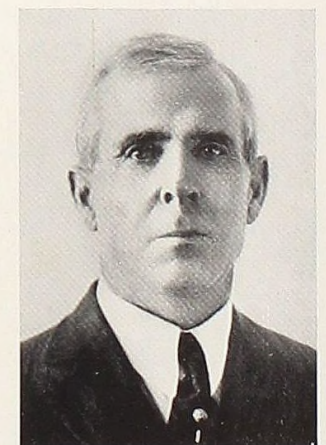
CLASS OF 1941



A. G. STUDER
M. D., LL. D.
Detroit



L. P. KEFGEN
Saginaw



E. OWEN
Grand Rapids

Without pictures—J. W. S. PIERSON, Grand Rapids
REV. B. J. BUSH, D. D., Detroit
A. L. SAYLES, Newberry

Compliments of

**RADEMACHER MOTOR SALES
AND SERVICE**

"Authorized Ford Dealer"

Compliments of—

A. J. UEBERROTH

Licensed
Electrical Contractor

713 Third St. Phone 741 Alma, Michigan

Compliments of—

HULL'S BAKERY

128-130 W. Superior Alma, Michigan

TRUSTEES
CLASS OF 1942



M. A. COOK
Chicago



D. D.
Detroit
REV. L. S. BROOKE

Without pictures—MRS. J. H. LANCASHIRE, New York City
COL. FRANK KNOX, Chicago
C. F. MILLER, Saginaw

KINDEST PERSONAL REGARDS

to
STUDENTS FACULTY

ALMA COLLEGE

FOSTER BUS LINE

D. S. (Dalt) Foster
LANSING, MICHIGAN

ADMINISTRATIVE
ASSISTANT



MRS. H. O. ABERNETHY

For many years Mrs. Abernethy has presided over the duties relative to the President's outer office. It is through her that one must work in order to talk to Dr. Dunning. To her belongs the credit for keeping the Alumni records as well as they have been kept the past many years. In fact, all the details of the executive office must pass through her capable hands, then to the faculty and student body.

If it's a
General Electric
Product
We Have It

MEDLER ELECTRIC CO.

H. B. Lueth, Proprietor

"Everything in the Electrical Line"

ALMA, MICHIGAN Phone 221

COLLEGE FOODS
PACKED ESPECIALLY IN LARGE SIZE
CONTAINERS
FOR QUALITY AND ECONOMY

O. R. PIEPER CO.

INSTITUTIONAL FOODS

MILWAUKEE and EAGLE RIVER

Compliments of

STARK'S RESTAURANT and HOTEL SUPPLIES
BATTLE CREEK, MICHIGAN

We had the pleasure of equipping Alma College with a new Blakeslee Dish Washer, Bake Oven, Baker's Table, etc., when they remodelled last Fall to make their kitchen one of the most modern in the State of Michigan. Consult our Designing Engineer for new ideas on modernizing.

We carry the most complete line of fixtures and supplies for Restaurants, Hotels, and Institutions, between Detroit and Chicago.

The Spot where the Students Gather and
the Best Place to Dine

**STATE SWEET SHOP
AND RESTAURANT**

J. Stamas, Prop.

J. Donald Sullivan

CONSULTING ENGINEER
GENERAL CONTRACTOR

Alma Savings Bank Building

Phone 332

It is known in Alma for the
QUALITY OF THE FOOD

ASK THE STUDENTS

MAIN CAFE

117 E. Superior St. Alma, Michigan

Phone 42

We never have flops
Our work is tops—
We'll keep the spots
And save you lots!

ALMA CITY CLEANERS

"CHUCK"

"JACK"

LIBRARY

Congratulations to the Class
of 1939

From a Friend of
the College



MRS. D. W. ROBINSON



MALONYA E. WOOD

In addition to the Librarian, Miss Ward, Alma boasts two fine assistants in this department of the college. Mrs. Robinson has been there for a number of years and her smile and willing help has made the library a welcome place to go. Miss Wood was added to the staff last year and her experience as a student here also enables her to give the student body the best of service.

To The Student Body:

Editors of yearbooks are expected to write some sort of statement relative to publishing the volume, throwing bouquets at staff members, and apologizing for mistakes. Here is my story...Thanks to all who have worked with me; it took a while to get moving but you all came through in the end and that's what counts...Thanks to Dr. Brokenshire for a "fatherly talk" he gave me before actual work had started..."Gratios" to Herb and Sully, two darn swell workers if there ever have been...to Betty Dick for the huge Scotch thermometer that became the center of much questioning...Also to my professors who passed me ?? in spite of the fact that I neglected my studying...to the engravers for their patience...We tried to give you the best book for your money and ended up by selling it for two dollars when they cost over \$2.25 to publish...So, if you have any kick, don't go to anyone but the Editor...and that won't do you any good...In closing I want to thank all for the privilege, and it has been one, of editing this book a second time. My only wish is that it will be more graciously received than was the first one.

Sincerely yours,
Russ Staudacher
Editor-In-Chief.

ACKNOWLEDGEMENTS

We, the staff of the 1939 Scotsman, hereby gratefully offer our appreciation to the following who have materially aided in the production of this book.

MR. D. E. FENSTERMACKER, Jahn & Ollier representative, for his time and ideas.

MISS MAURINE STOVALL for the fine photography in the volume.

THE JAHN & OLLIER ENGRAVING CO. for photo engraving.

IHLING BROS. EVERARD CO for the printing.

GLOBE BINDING & EMBOSsing CO. for the covers.

THE STUDENT BODY for its wholehearted cooperation.

ALMA COLLEGE LIBRARY



3 3190 00416 6369

Compliments of the staff

