



Alma College  
Library







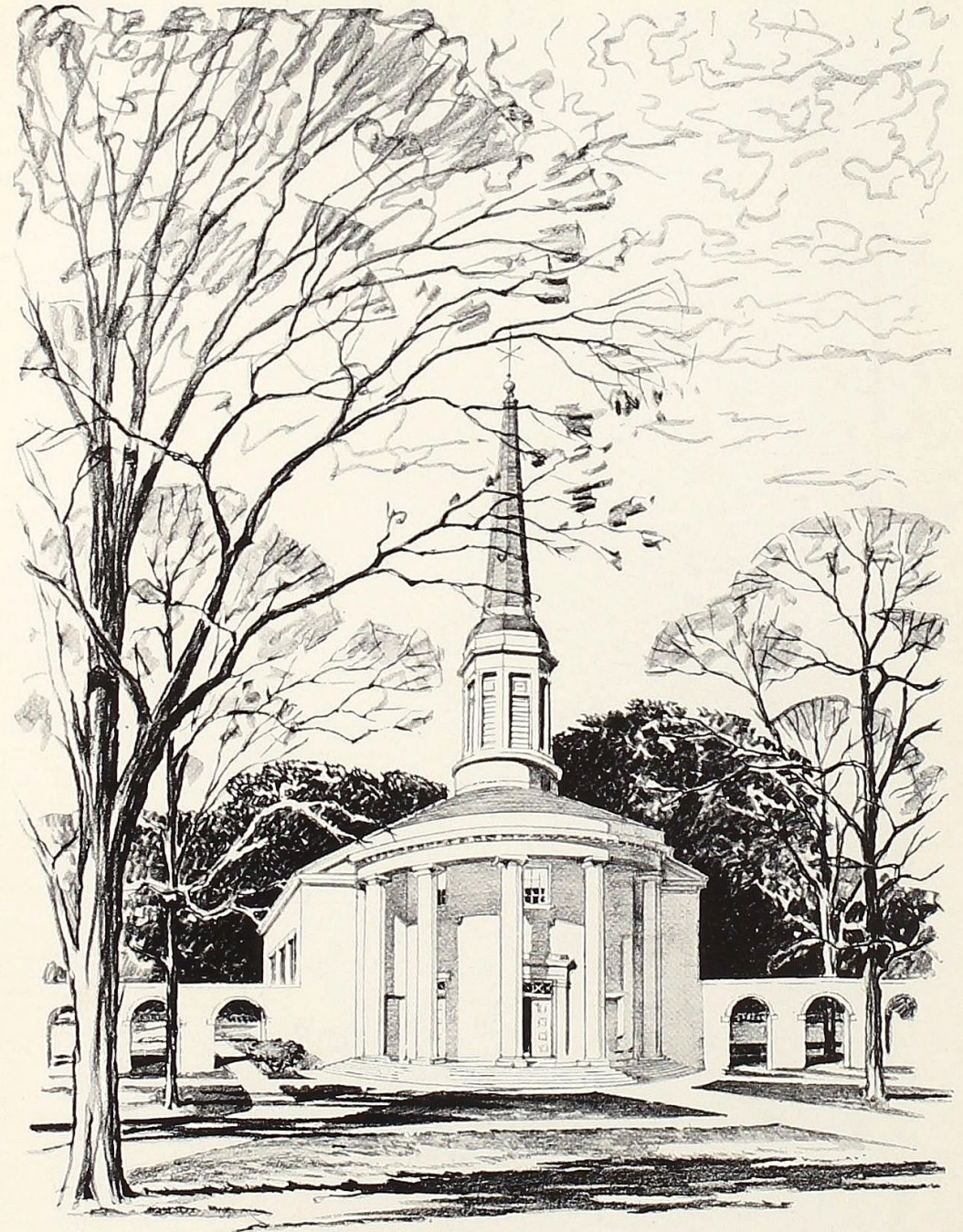
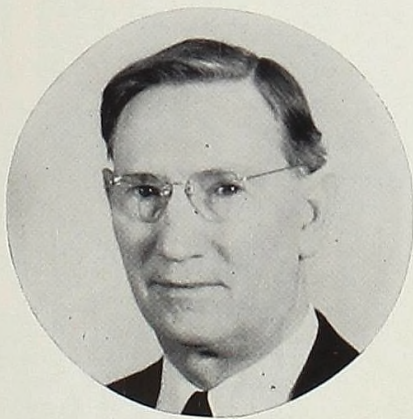
1941

# SCOTSMAN

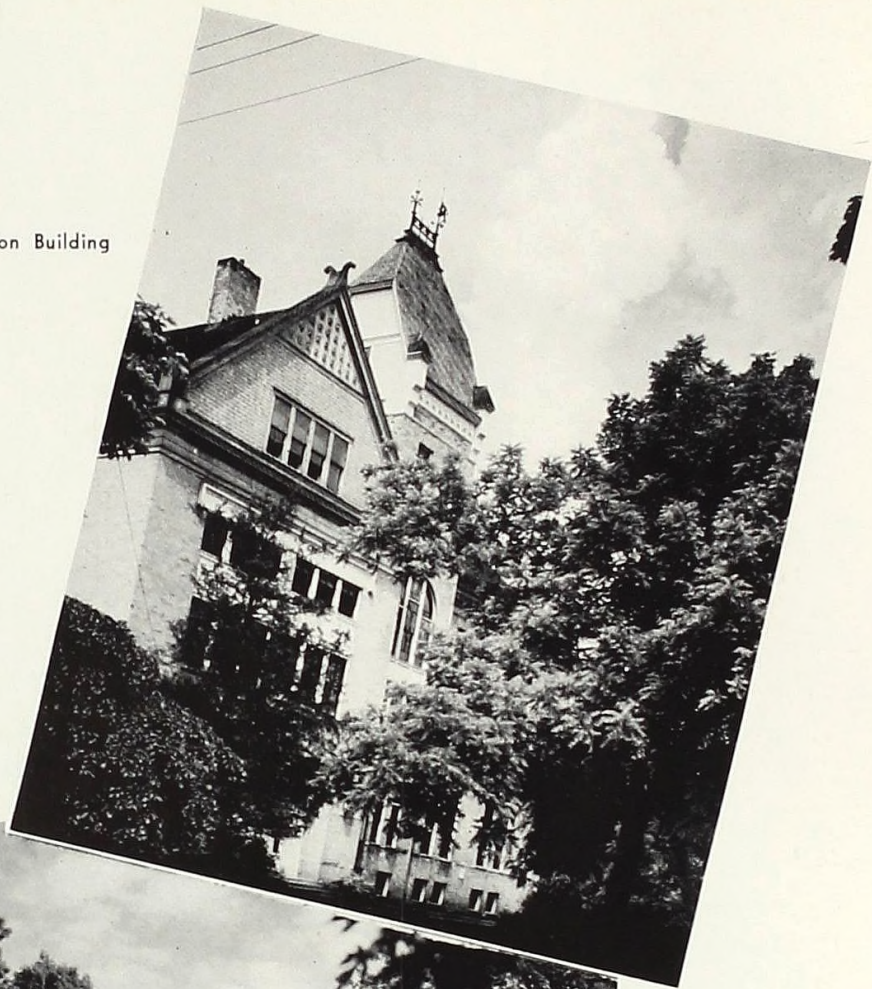
PUBLISHED  
BY STUDENTS  
OF ALMA  
COLLEGE

## Dedication

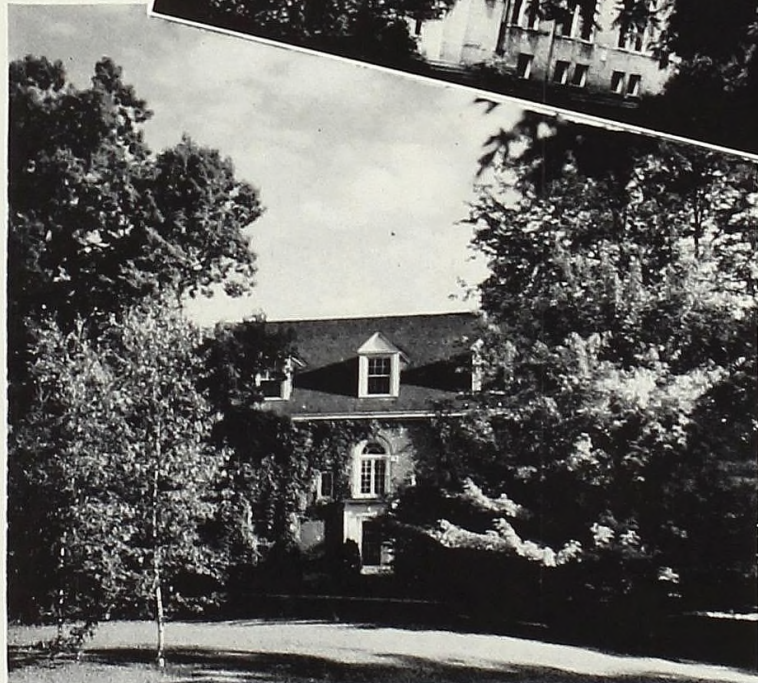
TO Adam E. Armstrong, Three Rivers manufacturer who, in these trying times, had the faith to believe a chapel for Alma College would be a worthwhile project, this yearbook is respectfully dedicated.



Administration Building

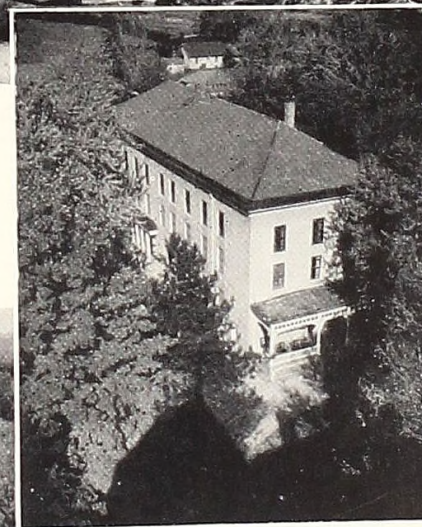


Wright Hall rock garden



The President's House  
through the Grove.

Pioneer Hall



View towards Memorial  
Gymnasium from Admin-  
istration Building.



With this school year encompassing a national election in which two outstanding leaders remained in the White House, The Scotsman here presents Alma's own *President and First Lady*, Dr. and Mrs. John Wirt Dunning. As former students here, both are closely acquainted with Alma's problems and have her best interests at heart. Both are integral parts of the campus program, Dr. Dunning pursuing the administrative problems with tireless energy and patience, while Mrs. Dunning finds her place as a gracious hostess for the college's official social calendar.

## President and First Lady



# Administration

TWO paramount problems faced the administration during this last school year, according to President John Wirt Dunning.

Carrying over from last year was the financial campaign for the expansion of college facilities, the current phase of which has been the new chapel under construction on the campus. National defense orders tied up the steel market to such an extent that the chapel could not be completed in time for commencement. President Dunning stated that the chapel would be completed during the latter part of July and will be ready for use next fall.

The other major problem also had its connection with the national defense program, that of the selective service and its effect on youths both in college and contemplating college. The administration endeavored to aid all students

On the left: Mrs. H. O. Abernethy, secretary to the President, and Dr. Dunning. On the right: William Ellis, Miss Virginia Tice and Joe Yeager.



# Dean of Women

affected in this way, and, for the most part, found the draft boards extremely co-operative.

This year also saw the administration announce the addition of L. Robert Oaks to the college staff as executive secretary operating out of Alma on the financial program and promotion, and the donation by Col. Frank Knox of two scholarships of eight hundred dollars each for out-of-state students on a competitive basis.

The business office continued under the direction of William Ellis, business manager and assistant treasurer. Assisting in the office were Joe Yeager, auditor, and Miss Virginia Tice, secretary to the business manager.

Administrative supervision of Wright Hall, women's dormitory, continued under Miss Kathleen I. Gillard, dean of women who came to Alma in 1939. In addition to her duties as dean, Miss Gillard was an instructor in the English department in advanced courses. Assisting her was Mrs. Ella Love Hutton, matron and house mother who came to Alma in 1938.



Betty Pecsenye, Ruth Kolvoord and Dean Kathleen Gillard.



# Faculty



THE end of this school year brings with it a sad parting with the voluntary retirement of Prof. James E. Mitchell (pictured above), who has been intimately connected with the college for more than fifty years.

A native of Alma, Prof. Mitchell attended the college prep school in 1887-89, and the college proper in 1889-93. After an absence of four years, he returned to Alma in 1897 to become the Ammi W. Wright Professor of History and Political Science. He was dean of the college from 1912 to 1936, and was given the LL. D. degree here in 1927 on the fortieth anniversary of the college.

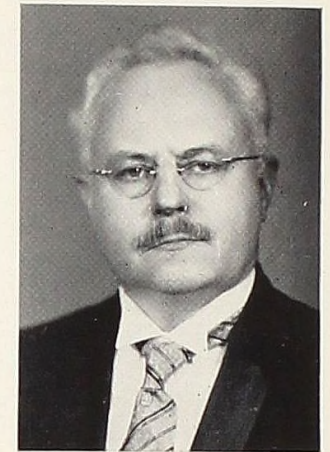
He received his A. B. degree here and the A. M. at Columbia University, and also studied at Cambridge University, Oxford University and the University of London. He is a member of the American Historical Association, the American Academy of Political and Social Science and the Michigan Academy of Science.



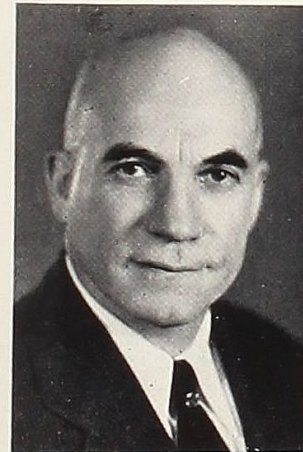
GLADYS ANDREWS, M. S.  
Social Director and Director  
of Physical Education for  
Women.



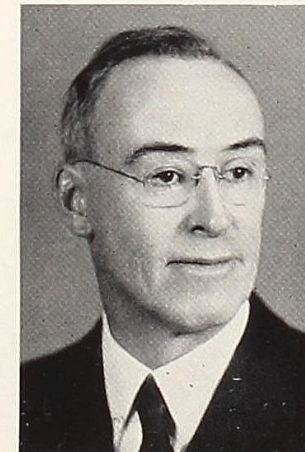
KATHERINE ARDIS, A. M.  
Assistant Professor of Fine  
Arts.



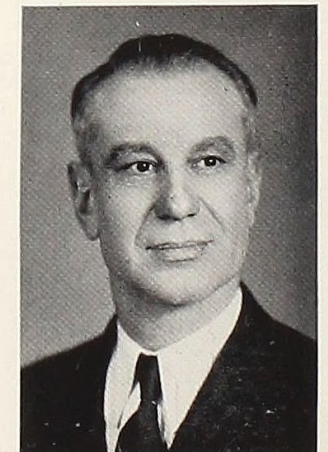
CHARLES D. BROKENSHIRE,  
A. M., B. D., D. D.  
Charles W. Wells Professor  
of German and Professor of  
Romance Languages.



ROBERT W. CLACK, A. M.  
Ammi W. Wright Professor  
of Mathematics and Astron-  
omy.



RAYMOND C. DITTO, A. M.  
John F. Dodge Professor of  
Physics.



JESS W. EWER, A. B.,  
Professor of Vocal Music.



MARGARET E. FOLEY, A. M.  
Professor of French.



KATHLEEN I. GILLARD, A. M.  
Dean of Women and Professor of English Literature.



ROY W. HAMILTON, A. M.  
Gelston Professor of English Language and Literature; Secretary of the Faculty.



HELEN E. JORDAN, M. S.  
Instructor in Biology.



WILFORD E. KAUFMANN, A. M., Ph. D.  
Professor of Chemistry.



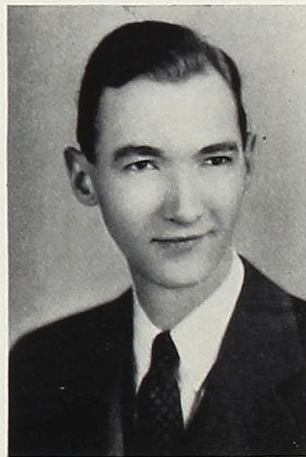
GORDON A. MACDONALD, A. B.  
Professor of Physical Education for Men.



BERYL HARRISON, B. M.  
Instructor in Violin.



HENRY W. HOWE, A. M.  
Assistant Professor of History and Physical Education for Men.



CHARLES K. JOHNSON, A. M.  
Instructor in Religion and Religious Education, Synod of Michigan Foundation.



JANE MEADOWS, B. S.  
Instructor in Physical Education.



FINA C. OTT, A. M.  
Librarian and Instructor in Library Science.



MOLLY PARRISH, A. M.  
Instructor in French.



GEORGE B. RANDELS, Ph. D.  
Henry B. Smith Professor of  
Philosophy.



PAUL L. RICE, M. S., Ph. D.  
Nathan B. Bradley Professor  
of Biology.



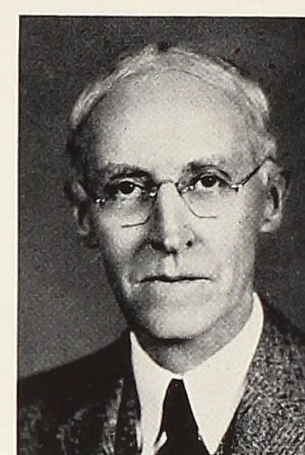
GRACE D. ROBERTS  
Professor of Piano and The-  
ory.



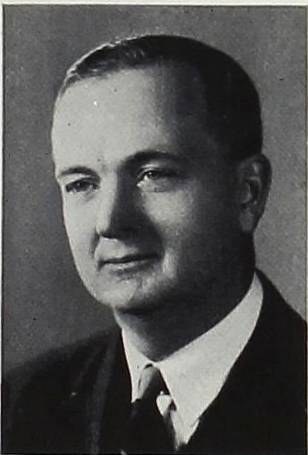
RALPH L. E. SEIFERT, Ph. D.  
Assistant Professor of Chem-  
istry.



C. CARNEY SMITH, A. M.  
Assistant Professor of  
Speech.



HERMAN WALLACE  
SPENCER, A. M.  
Professor of Rhetoric and  
Journalism.



SILAS O. ROREM,  
A. M., Ph. D.  
Professor of Education.



JULIA A. SCHAAFSMA, A. M.  
Instructor in Piano.



WILLIAM M. SEAMAN,  
A. M., Ph. D.  
Assistant Professor of Latin  
and Greek.



FLORENCE M. STEWARD,  
A. M.  
Professor of Sociology.



LYDER L. UNSTAD,  
A. M., Ph. D.  
Professor of Economics.



MARVIN C. VOLPEL, A. M.  
Instructor in Mathematics;  
Resident Head of Pioneer Hall.



## Student Administration

AIMING towards democratic principles, self-government plays an important part in student life at Alma College. This year three prominent student administrative boards were the Student Council, the Pioneer Hall Council, and the Wright Hall Senate.

The most important of these was the Student Council, presided over by Robert Hanzel. Paramount item of business was the change to an Alma College Community Government, governed by a Co-operative Council of representative students and faculty members. The Council thus hoped to better correlate campus activities. Members of the council, pictured at the top of the opposite page, were: (seated) Robert Brown, Betty Thomas, Victor Fox, Kathleen Thomson and Prof. Hamilton; (standing) Jeanne Speerstra, Charles Purves, Robert Hanzel, Robert Morin, Louis Friedrich, David Kinney, Bruce Mellinger and Charles McLean.

Activities of the men's dormitory were directed by the Pioneer Hall Council, pictured in the middle of the opposite page: Marvin Volpel, faculty resident; Robert Jackson, Jack Heimforth, Robert Hamilton and President Kenneth Plaxton.

Pictured at the bottom of the opposite page is the Wright Hall Senate, governing body of the women's dormitory which worked with Dean Gillard: (standing) Social President Margaret Conrad, Lois Lindsay and Bettie Jane Fee; (seated) Dorothy Allison, Blanche Bahlke, Helen Dehnke, Ruth Kolvoord and Judiciary President Betty Thomas.

# ATHLETICS

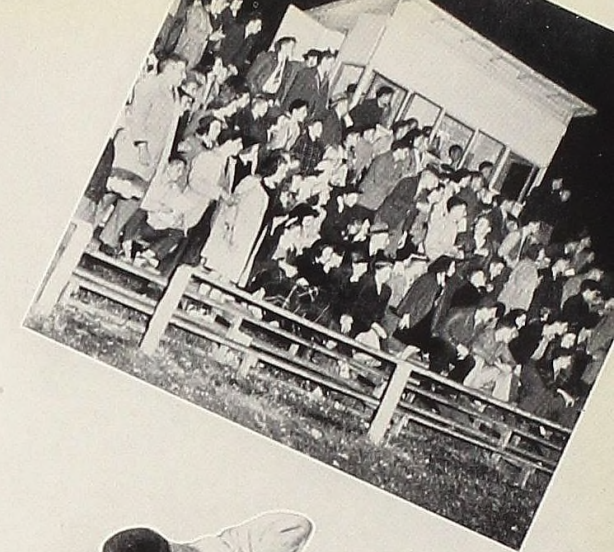
EVERY school has its year in athletics, and the 1940-41 season proved to be Alma's turn.

In football, an outstanding team swept all opposition the major part of the season, but bogged down at the last to take second place in the MIAA behind Albion. Basketball was another story, however, as the Scots dashed through to the MIAA title with a clean slate, the first time that it had been done since Olivet turned the trick in 1931-32. Not only did they win the league title, but they also set up a string of twenty-two consecutive victories, and went on to represent Michigan at the national intercollegiates. Individuals in both sports came through for all-league selections and state-wide recognition.

In addition to honors gained in these two major sports, the advance showing of the tennis, golf and track teams gave high hopes for Alma's chances at the MIAA Field Day, results of which might give the Scots the coveted all-sports trophy.

A note of gloom was seen by many, however, as the result of the current world situation and the draft which gave every indication of disrupting the fine group of junior athletes and taking away the promise of another outstanding season for the Scots next year.

Coach Gordon A. Macdonald again headed the coaching staff in his position of director of athletics, handling varsity football, basketball and track. Coach Henry Howe had charge of freshman football and basketball, and varsity golf. Don Smith supervised the intramural program, assisted in football and track, and coached tennis and baseball. Student managers this year, appointed for each sport under a new system, were James Emms for football, George DeHority for basketball, and Charles McLean for all spring sports. Francis Cappaert again had charge of equipment.



# Varsity Scores

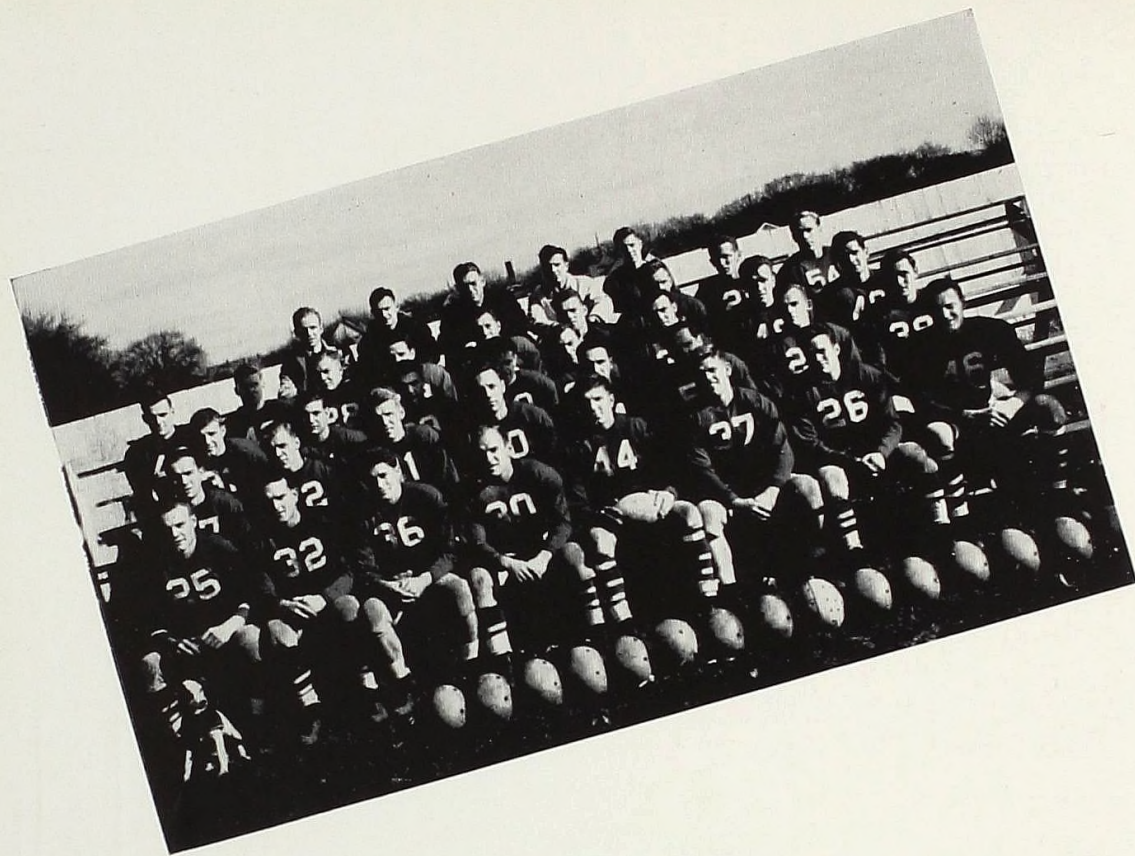
Alma	37— 0	Grand Rapids U
Alma	19— 7	Hope
Alma	39— 0	Hillsdale
Alma	14— 0	Adrian
Alma	19— 2	Kalamazoo
Alma	7—24	Mich. Normal
Alma	0—12	Albion



LET'S NAIL THIS ONE DOWN TOO

- ADRIAN 14-0
- HILLSDALE-39-0
- HOPE 19-7
- C. R. UNIV. -37-0

ZETA SIGMA HOUSE



BACK ROW: Fritz Ohliger, Assistant Coach Donald Smith, Coach Gordon A. Macdonald, Manager James Emms and Trainer Jack King; SECOND ROW: Robert Kirby, Donald McKeith, Fred Harth, Bud Wilson, Frank Navarre, Robert Higgins, Ed Penner, Ralph Banfield and Joe Blata; THIRD ROW: Rex Holmes, Marv Fenner, James Hicks, Jack Tait, Max Tullis, William Pink, Steve Toth and Ed Riggs; FOURTH ROW: George Gillert, Clancy Hoogerland, Keith Carey, Ray Robertson, Al McCuaig, Ed Baklarz, William LaPaugh and Danford Gallagher; FRONT ROW: Francis Cappaert (with mascot Porky), William Carr, Floyd McMillen, Gerald Barnett, Captain Ed Ziem, Fred Hill, Tom Purdy and Carroll Jones.

# F O O T B A L L

AFTER starting out in whirlwind fashion, the varsity football team bogged down in the last two games of the season to finish second in the MIAA behind Albion, winner for the second consecutive year. Coach Macdonald's boys played seven games, winning the first five and losing the last two.

The superiority of the Scots for the season as a whole is shown by the fact that they gained 1,803 yards from rushing and passing combined to a total of 724 yards for their opponents. In addition, statistics show that the backfield men rated high in ball carrying, for which the line should receive a great deal of credit, having an average of 4.2 yards per try.

Four of the Scot gridders were selected to the all-MIAA first team while two were named to the second eleven. Those who grabbed off the top honors with their play during the season were Keith Carey, end; Gerald Barnett, guard; Edward Ziem, tackle; and Jack Tait, back. For second team rating, Frank Navarre was named at center and Tinker Kirby as a back.

Jack Tait, sophomore back, was probably the best backfield man on the squad, gaining over a hundred yards himself in two games. In later games, however, he lost much of this advantage but finished the season with a 4.7 rushing average. In the line, The SCOTSMAN names William Carr as the top man. As the man to watch for future outstanding play, the yearbook picks William Pink.

Piloting the team through the year as field captain was Edward Ziem, senior tackle. At the close of the season, the team selected Big Ed Baklarz as the captain for the 1941 campaign. Fred Hill, halfback, received his teammates' vote as the most valuable man of the year.

In the first game of the year, played under the floodlights at Alma on September 20, the Scots gave high promise by running over a heavy Grand Rapids team, 37 to 0. Touchdowns were scored by Tait, Carey, Cappaert, Tullis, and two for Kirby who also converted one point. . . . October 4 under the lights at Holland, the Mac-men defeated Hope, 19 to 7, in spite of fumbles and penalties. Tait got two, Kirby one, and Carey converted one. Tait garnered 146 yards. . . . October 11 under Alma's lights, the locals steamrollered Hillsdale, 39 to 0, gaining 410 yards to a negative 27. Tait, who picked up 158 yards, scored twice as did Kirby, Pink got one, and

# Varsity Football

Gallagher tallied on Tullis' pass in the end zone. Carey converted three. . . . Playing in mud and rain, the Scots submarined to a 14-0 win over Adrian there on October 19, with Tait and Kirby scoring one each and Carey kicking two placements.

On Homecoming Day, October 26, the Scots gained 207 yards to a negative 34 to defeat Kalamazoo, 19 to 2. Tait got two, Jim Hicks tallied on a pass interception, and Carey converted one. . . . On November 2 at Ypsilanti, the Mac-

men started out fast to score on a pass from Kirby to Tait, with Carey converting, but bogged down for the remainder of the game to lose, 24 to 7. This was one of the year's biggest upsets for Michigan play as the Hurons previously had not won a game. They played heads-up ball, however, and took advantage of the breaks, of which there were many as the Scots fumbled continually to stop scoring marches.

The heart-breaking game of the year, however, was the closing contest, played at Albion on November 9. About 200 members of the Alma student body and the kiltie band went down to see the game, but their hopes for a league championship were cut to the quick by the Albion gridders.

Once again the Scot attack bogged down, mainly through fumbles, the old Nemesis, and the Britons went on to score a 12 to 0 victory and take the title. It was Albion's thirteenth consecutive football victory and the second straight year that they won the MIAA. The Britons were not better on the whole, as the Mac-men gained twice as many first downs and 23 more yards. Albion scored both times on swift, hope-shattering plays which took most of the fight out of Alma.



Varsity cagers as they left for Kansas City: (back row) William McLain, Keith Carey, Robert Kirby, Jack Howe, Silvio Fortino, Warren Hartt, Danford Gallagher, Edwin Penner, Richard Krall and Coach Gordon Macdonald; (front row) Reporter Marvin Koffman, Alfred McCuaig, Bud Howe, Equipment Manager Francis Cappaert, Jack Tait and Manager George DeHority.

# Basketball

HEADLINING the sports parade at Alma this year was the outstanding performance of the varsity basketball squad which won the championship of the Michigan Intercollegiate Athletic Association with ten victories and no defeats.

In the regular season, Coach Macdonald's Scots won 22 out of 25 games, with 21 of the victories being consecutive. In addition, the team was selected to represent Michigan in the national intercollegiate tournament at Kansas City where they lost out in the second round. The Scots won the first game over Panhandle Aggies of Oklahoma, 43 to 24,



## Cagers Enter

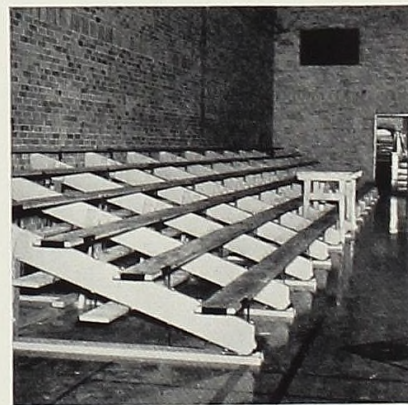
but were eliminated by Murray State Teachers College of Kentucky, the runner-up, 51 to 33. The Mac-men played one other post-season game, facing the Harlem Globetrotters in a benefit for the college. Alma forced the professional champions into an overtime, but lost 45 to 43.

The winning of the MIAA championship was more outstanding due to the fact that it had not been taken with a clean slate since 1931-32.

Three members of the squad were selected to the all-MIAA team, Bud Howe at Forward, Keith Carey at center, and Tinker Kirby at guard. In the coaches poll conducted by *The Detroit Free Press*, these same three were given state recognition, Carey being rated second, Howe fifth and Kirby thirteenth. Carey was given another honor when Wayne University placed him on their all-opponent team.

The squad had only one senior member, Richard Krall, and was nearly the same as the 1939-40 edition. When Warren Hartt failed to return to school first semester, Sophomore Jack Howe drew the starting post, and second semester he and Hartt alternated. Kirby was the iron man of the squad, being the only one to play in all the games.

New bleachers purchased this year for basketball games.



## Kansas City Meet

Four players topped the hundred mark in scoring with two nearing the three hundred mark (only the regular season is counted here): Carey, 274; Bud Howe, 266; Kirby, 178; Jack Howe, 172. Game scores follow:

Alma 31—43	Wayne	Alma 53—22	Ferris Institute
Alma 64—38	Highland Park JC	Alma 46—35	Kalamazoo
Alma 36—42	Central State	Alma 42—34	Central State
Alma 44—49	Midland Chemics	Alma 77—32	Hillsdale
Alma 71—32	Hillsdale	Alma 72—43	Olivet
Alma 57—15	Traverse City	Alma 48—25	Albion
Alma 59—27	Olivet	Alma 55—34	Michigan Normal
Alma 55—20	Albion	Alma 53—34	Ferris Institute
Alma 62—20	Grand Rapids	Alma 52—32	Hope
Alma 48—43	Michigan Normal	Alma 68—41	Adrian
Alma 44—23	Hope	Alma 39—35	Kalamazoo
Alma 58—32	Adrian	Alma 43—24	Oklahoma
Alma 53—50	Grand Rapids	Alma 33—51	Kentucky
Alma 68—41	Briggs Beautyware	Alma 43—45	Globetrotters

Left: Warren Hartt (15) shoots and Bud Howe (13) follows in. Center: Bud Howe (13) launches one and Al McCuaig (11) stands ready to assist. Right: Al McCuaig (11) lays one up while Warren Hartt (15) and Bud Howe (extreme left) look on.



# Track



ALTHOUGH Albion, indoor title winner, looked like the best bet for the MIAA outdoor track crown, Alma was still rated in the running.

Joe Chester, the one-man track team who tied for high-scoring honors last year with sixteen points, was back again. Robert Kirby and Edwin Riggs looked strong for the javelin event, and Kirby and Keith Carey were rated tops for the discus. The relay team of Ralph Banfield, Max Tullis, Jack King and Carey was one of the best in the school's history, and Neil MacNeil was counted on to pick up points in the hurdles.

The Scots finished fourth in the indoor meet, and last year took third in the outdoor at Marshall.



# Baseball

COACHED by Don Smith and rooted by its most ardent supporter, Prof. Herman Spencer, the baseball squad this year had a schedule of eight contests. Two tilts were scheduled with Michigan State "B," two with Hillsdale and four with Central State.

Turnout was the largest since the sport's rejuvenation at Alma two years ago, due to the efforts of Charles Skinner and Dr. Dunning. Coach Smith carried a squad of eighteen throughout the season and many gave excellent promise in early workouts. Pitching was the biggest problem facing Coach Smith as all of last year's staff was lost. Some good prospects showed, however, in Ernest Gillard, Al Pears and Al Arklie.

Top picture: (standing) Ed Baklarz, Ralph Banfield, Joe Blata, Ray Robertson, Joe Chester, Jack Tait and Max Tullis; (seated) Francis Cappaert, Lynn Wilson, William Pink, Jack King, Neil MacNeil, Henry Broughall and Coach Macdonald.

Lower picture: (top row) William Marsh, Wilbur McCrum, Al Pears, Don McKeith, Edwin Penner and Francis Cappaert; (middle row) Prof. Spencer, James Hicks, Maurice Willits, Al Arklie, John Bell, Roscoe Walker, Walter Mattison and Coach Smith; (bottom row) Ernest Gillard, Victor Fox, Aymour Johnson, Charles McLean, Jack Tait and William LaPaugh.

# Tennis

Left to right: Carroll Jones, Warren Hartt, Preston Delavan, Bruce Kane, Edwin Parmelee, Francis Sherman, Thomas Purdy and Coach Smith. Not pictured, Walter Howe and Arthur Russell.



THIS year's tennis team was on the spot in connection with the MIAA Field Day on May 23 because much depended on them for Alma's chances of copping the all-sports trophy.

As usual, Kalamazoo's netters were rated tops in the league, especially after the successful showing of the Hornets on their southern tour. The big question that remained, however, was whether the Scots could beat out Albion.

Coach Donald Smith, a former regular tennis star for the Scots, believed that Alma had the material to rate second in the MIAA. The boys showed to good advantage in early matches, with Thomas Purdy, Francis Sherman, and Preston Delavan carrying the mail. The squad's strength was greatly bolstered in the early part of May by Walter Howe coming out.

Last year the netters took fourth in the MIAA.

# Golf

Left to right: Richard Krall (kneeling), Jack Lea, Robert Phillips, Theodore Welgoss, Sidney Kane and Donald Peters. Not pictured, Cyril Firth and Albert Katzenmeyer.



PROSPECTS for the golf team indicated that Alma would have the best squad in years, in spite of the fact that last year's links foursome took second in the MIAA. The team was again selected on a qualification basis, a system introduced here last year by Coach Henry Howe. Top men were Albert Katzenmeyer, Cyril Firth, Theodore Welgoss and Robert Phillips. Other members of the squad were Richard Krall, Sidney Kane, Jack Lea and Donald Peters.



## Frosh Football

Top row (left to right): Hugh Cresswell, August Bernthal, Andrew Edgerton, Robert Ruehl, Carl Davis, William Hunter, Bradford Hoffman, Carl Wickman and Duane Waters.

Middle row (left to right): Harry Dittmars, Walter Mattison, William Lemon, Thomas McGrain, Herbert Dahl, Alan Goodrich, Walter Trochim, Robert Brown, Edward Knighton and Coach Howe.

Front row (left to right): Robert Morin, Thomas Fitch, Glenn Mutchler, Stanley Davis, Robert Jackson, William Newton, Gayle Saxton, Roscoe Walker, Edward Kay and Robert Hamilton.

COACH Henry Howe's freshman football team had a disappointing season, losing all three of the games played. In the opening tilt, played on October 9 at Holland, the Scotties were defeated, 13 to 6. Alma outplayed the Dutchies during three-quarters of the game, however. Carl Davis scored Alma's only touchdown.

In the second game on October 18, the Scotties held a much heavier and more experienced Central State frosh team to a 6-0 score on Bahlke Field. The fine defensive work of the team, which staved off further scoring several times, was especially outstanding.

The Scotties suffered a decided rout in their final game of the year when Western State's frosh team came to Alma on November 1. The Bronco yearlings turned on the heat with their class and superior numbers to steamroll to a 40 to 7 victory. Alma's only counter came in the closing minutes when Carl Davis whipped a pass to Carl Wickman.

## Frosh Basketball

COACH Henry Howe's freshman basketball team finished its season of six regular contests with one victory and five defeats. The Scotties broke even with Kalamazoo, and lost two games each to Hope and Central State. In addition, they suffered a loss at the hands of the Collegiate All-Stars in an exhibition game.

The season was not as bad as the win and loss record would show, however, as several of the defeats were by close margins. In addition, the calibre of competition, especially Hope and Central State, was of an outstanding type.

Scoring power was centered in a few players as the Scotties tallied 258 points to their opponents' 299. Top five scorers were: Davis, 60; Walker and Saxton, 58; Heimforth, 42; and Wickman, 18.

Left to right: (standing) Coach Howe, Carl Wickman, Carl Davis, Jack Heimforth, Gayle Saxton, Roscoe Walker and Francis Cappaert; (seated) Thomas Fitch, Paul French, Walter Mattison, Robert Dewar and William Crimmons. Albert Pears not pictured.



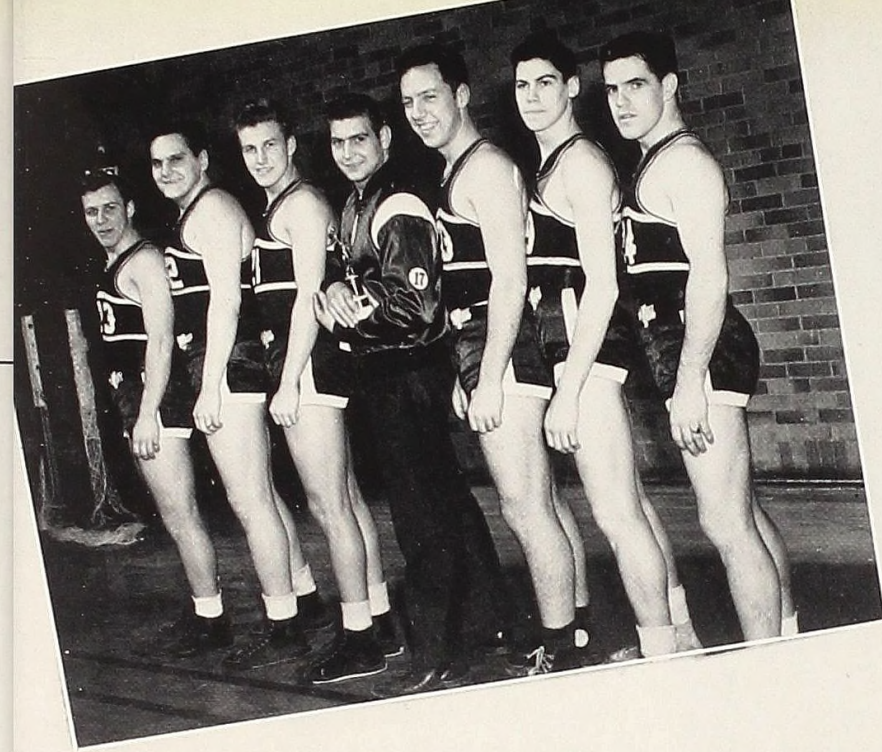
# Intramurals

UNDER the supervision of Assistant Coach Don Smith, the intramural athletic program this year was an active one with great interest shown by both players and spectators. Basketball topped the list of competitive sports, but softball in the spring between the three fraternities and the Independents attracted great interest. In addition, Coach Smith again conducted his physical education classes with all types of work.

A special feature was the all-school free throw contest, run off between halves of regular basketball games. Edwin Riggs copped the crown by sinking 41 out of 50 attempts.

Winner of the class A intramural basketball title was the Delta Gamma Tau fraternity team coached by Marvin Fenner. This group is pictured at the top of the opposite page, left to right: Clarence Hoogerland, Edward Baklarz, Donald McKeith, Marvin Fenner, Raymond Robertson, Lynn Wilson and Albert Wilson.

The class B trophy was won by Charles McLean's Phi Phi Alpha fraternity team, pictured at the bottom of the opposite page, left to right: Thomas Purdy, Victor Fox, Robert Hanzel, Carroll Jones, Ernest Gillard, Ralph Banfield, Jack Lea and Charles McLean (kneeling).



# Women's Sports

THE Women's Athletic Association has combined work with play as a part of the school's slogan, "Where friendliness links learning with living."

Hockey, the fastest existing sport, opened the new athletic program this year under the leadership of Miss Gladys Andrews and Miss Jane Meadows, the two athletic instructors. Alma co-eds played their first game of the season with Albion, losing at the Britons' homecoming. Participation in Alma's Homecoming Day, Hallowe'en party, ping pong tournaments, bowling tournaments and WAA work were highlights of last fall. To close the banner year of 1940, the WAA held a Christmas Chocolate at the President's House where varsity letters were awarded to Frieda Volpel, Ruth Reed and Joyce Snyder, and a pin was presented to Past President Betty Thomas.

Co-recreation is one of the planned highlights of the year on the Alma campus. On nearly every day of the week, some sport including both men and women was planned for an informal get-together of fun. Volleyball, badminton, country dancing, tap dancing, tum-



A shot of the tennis courts, one of the most popular sites for women's spring sports.



At the right are shots taken at the women's hallowe'en party, sponsored by the Women's Athletic Association. Top: Miss Andrews "calls" for square dancing. Center: Miss Jordan (right) sticks out her tongue as Miss Parrish ties her shoe. Lower left: WAA President Margaret Conrad prepares for the apple-bobbing contest. Lower right: (left to right) Miss Klein, Mrs. Rorem, Dean Gillard and Mrs. Ewer.

# Women's Sports

bling, social dancing, roller skating, ice skating and sleigh riding were only a few of the diversified co-recreational activities on the Alma campus this last year.

Country dancing, which stormed Alma College as well as many other campuses of the country, was one of the newest and most popular types of recreation. The students, under two expert teachers, learned the different calls and many of the old square dances, and had what they termed "loads of fun."

Breaking Sunday tradition and making history, the WAA and Delta Gamma Tau, one of the campus fraternities, got together one December Sabbath and had a grand sleigh ride along the Old River Road. It was the first time in the history of the college that the WAA and a fraternity combined their plans, and the success of this venture gave high expectations of similar attempts in the future.

The Almanians also went out for roller skating in a big way. Taking the flops laughingly and gracefully, three quarters of the student body usually turned out as well as a number of faculty members. To go seventeen miles to the roller skating rink was a mere trifle in the life of the real Alma student.

On Valentine's Day, a girl-bid, blind-date party was the highlight. After paying a dime, the co-eds picked a man's name from a hat and on this particular evening walked over to their respective



The above shots were taken at the WAA Chocolate at the President's House. Top: A sing-fest. Middle: Awards given to Frieda Volpel, Past-president Betty Thomas, Ruth Reed and Joyce Snyder. Bottom: Marjorie Croft takes a whirl at being Santa Claus.

Field hockey and country dancing both proved popular this year as co-recreational activities, and enjoyed an active participation, as these pictures will show.



houses to get them. Group games, dancing, badminton and fencing were eagerly participated in by everyone.

During the spring months, mixed volleyball and basketball tournaments were held. Later, both men and women became enthusiastic about badminton, which became one of the most popular sports on the campus. In April and May, baseball and tennis were rated tops by the co-eds.

On May 3, Alma College women were hostesses at the seventh annual MIAA Play Day to representatives from Hope, Kalamazoo, Albion, Olivet, Adrian and Hillsdale colleges. These co-eds proved their skill in both individual and group sports. Attractive awards, made by the art department, were presented to the winners.

The year's activities ended with the participation of every member of the women's physical education department in the howling success, "The Toy Shop," on the traditional Campus Day, May 21, at Bahlke Field. This pageant, presented in the evening, was one of the highlights of the year and attracted a large throng of townspeople, alumni and students. Presented in costumes, this pageant gave the audience a colorful panorama, all of which was aided by the kiltie band directed by Prof. Ewer. It was the second time that the physical education department and the band had co-operated in this annual venture, last year being the inauguration of the pageant.

# Seniors



*TOP ROW:* (left to right) JOHN ADAMS, graduate student; DOROTHY ALLISON, *Economics, Religion, Spanish*; GERALD BARNETT, *History, Education, French*; HENRY BROUGHALL, *History, English, Sociology, Spanish*.

*SECOND ROW:* (left to right) FLORENCE BROWN, *Classics, German, Education, French, Biology, Art*; WILLIAM CARR, *Mathematics, Education, History, German*; JOSEPH GODLESKI CHESTER, *History, Education, English, Biology, French*; MARGARET CONRAD, *English, Education, Biology, Spanish*.

*THIRD ROW:* (left to right) ROGER DENOYELLES, *History, Economics, Biology, French*; JEANETTE ENGLISH DICKINSON, *Sociology, Education, Biology, French*; BETTE DUGAL, *Education, English, Spanish*; DOROTHY DUVALL, *Education, Chemistry, Religion*.

*FOURTH ROW:* (left to right) JAMES EMMS, *History, Education, Biology, French*; LOUIS FRIEDRICH, *Chemistry, Mathematics, German*; WILLIAM FRIER, *Physics, Mathematics, French*; DAVID GAINNEY, *English, Education, History*.

*BOTTOM ROW:* (left to right) ERNEST GILLARD, *Chemistry, Mathematics, French*; LOIS GOLDIE, *Sociology, Education, English, French*; JOE GOODELL, *Economics, History, French*; VEDELL GUERNSEY, *Chemistry, Mathematics, German*.



# Seniors

*TOP ROW:* (left to right) ROBERT HANZEL, *Chemistry, Education, Mathematics, German*; MAVIS HARRISON, *Music, Education, French*; AYMOUR JOHNSON, *Biology, Education, French*; CARROLL JONES, *Economics, Education, Spanish, Speech*.

*SECOND ROW:* (left to right) GEORGE JORDAN, *Biology, Education, Mathematics, German*; ARVO JUHOLA, *Chemistry, Mathematics, German*; SIDNEY KANE, *English, Economics, History, Biology, Latin*; MARVIN KOFFMAN, *History, Economics, Speech, Biology, German*.

*THIRD ROW:* (left to right) RICHARD KRALL, *History, Education, Economics, German*; GERALD LAPPIN, *Chemistry, Mathematics, German*; ALFRED LINDLEY, *Economics, Education, German, History*; LOIS LINDSAY, *French, Education, English, Mathematics, German*.

*BOTTOM ROW:* (left to right) THOMAS McCLELLAND, *History, English, French*; ALFTRUDA BELL McDONALD, *Sociology, French, History*; CHARLES McLEAN, *History, Education, German*; EUGENE NIXON, *Chemistry, Mathematics, German, French*.

# Seniors



*TOP ROW:* (left to right) PETER PAWLYK, *Chemistry, Mathematics, Physics, German*; THOMAS PURDY, *Biology, Education, French*; ARTHUR RUSSELL, *History, Education, Biology, French*; CONSTANCE SIEG, *English, History, Education, Biology, French*.

*SECOND ROW:* (left to right) CATHARINE CONGER SMITH, *Sociology, Biology, History, French*; DANE SMITH, *Economics, Mathematics, German*; JEANNE SPEERSTRA, *French, Education, Biology, Sociology, Art*; HERBERT SPENDLOVE, *History, Education, French*.

*THIRD ROW:* (left to right) BETTY THOMAS, *English, Education, Biology, French*; JOHN TRUE, *History, Philosophy, French*; CARL WAHLSTEN, *Economics, Sociology, Chemistry, German*; KATHERINE WEAVERS, *Sociology, Speech, Biology*.

*BOTTOM ROW:* (left to right) WILFRED WEBB, *Mathematics, Education, History, Physics, French*; WOODROW WOOLEY, *Classics, French, English, Biology*. OTHER SENIORS NOT PICTURED: Dorothy Ferguson, Cyril Firth, Ernest Goetz, Harold Hodgson, Herbert Lints, Estelle Watson Martyn, Stewart McFadden, Louise Marshall, Donald Smith and Edward Ziem.

# Juniors

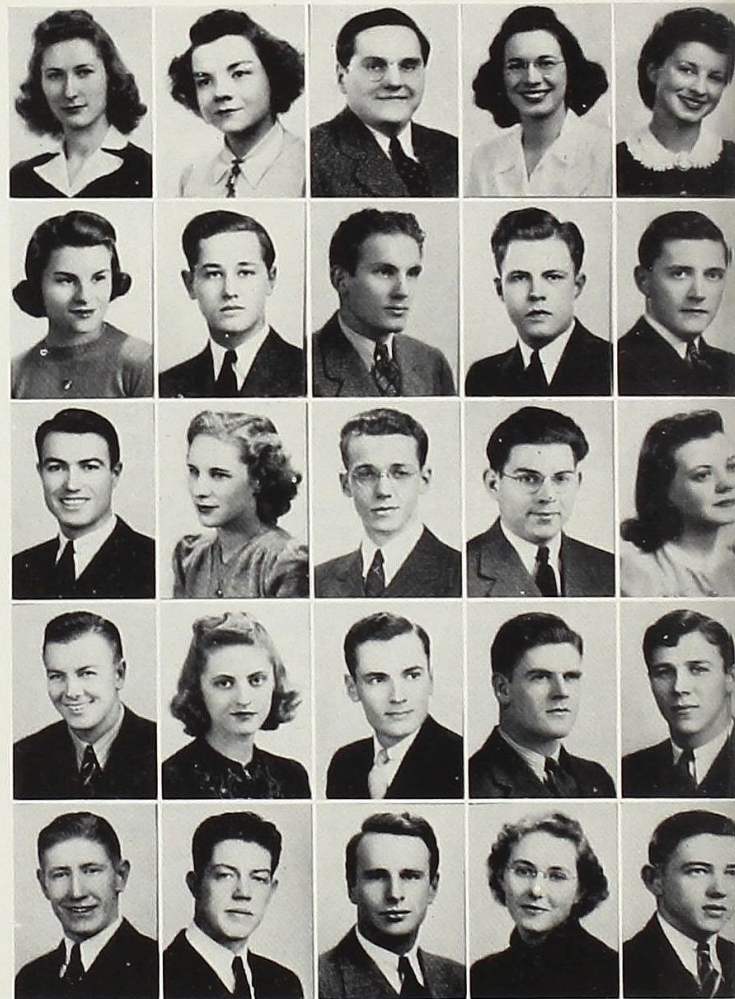
*Top row:* Blanche Bahlke, Mary Elizabeth Baker, Edward Baklarz, Jean Beckwith and Eileen Carrier.

*Second row:* Betty Cleland, Max Cook, James Cotter, Jack Crittenden and George DeHority.

*Third row:* Robert Dickinson, Phyllis Koepfgen Dunnette, Albert Eurich, Deane Fink and Mary Goodwyn.

*Fourth row:* Fred Hartt, Marion Hass, Sheldon Hastings, Fred Hill and Clarence Hoogerland.

*Bottom row:* Andrew Horne, Bruce Kane, Albert Katzenmeyer, Ruth Kolvoord and Jack Lea.



*Top row:* Clifford Leestma, Bruce Lindley, Donald McKeith, Claude Maxwell and Bruce Mellinger.

*Second row:* Jean Merrill, Irma Niederschmidt, Randalyn Parsons, Edwin Penner and Donald Peters.

*Third row:* Kenneth Peterson, Vera Pitcher, Donald Press, Ruth Reed and Sally Reed.

*Fourth row:* Edwin Riggs, Stanley Smith, Joyce Snyder, Russell Sterling and Frieda Volpel.

*Bottom row:* Ann Wacker, Mary Lou Williams, Albert Wilson and Lynn Wilson.

# Sophomores

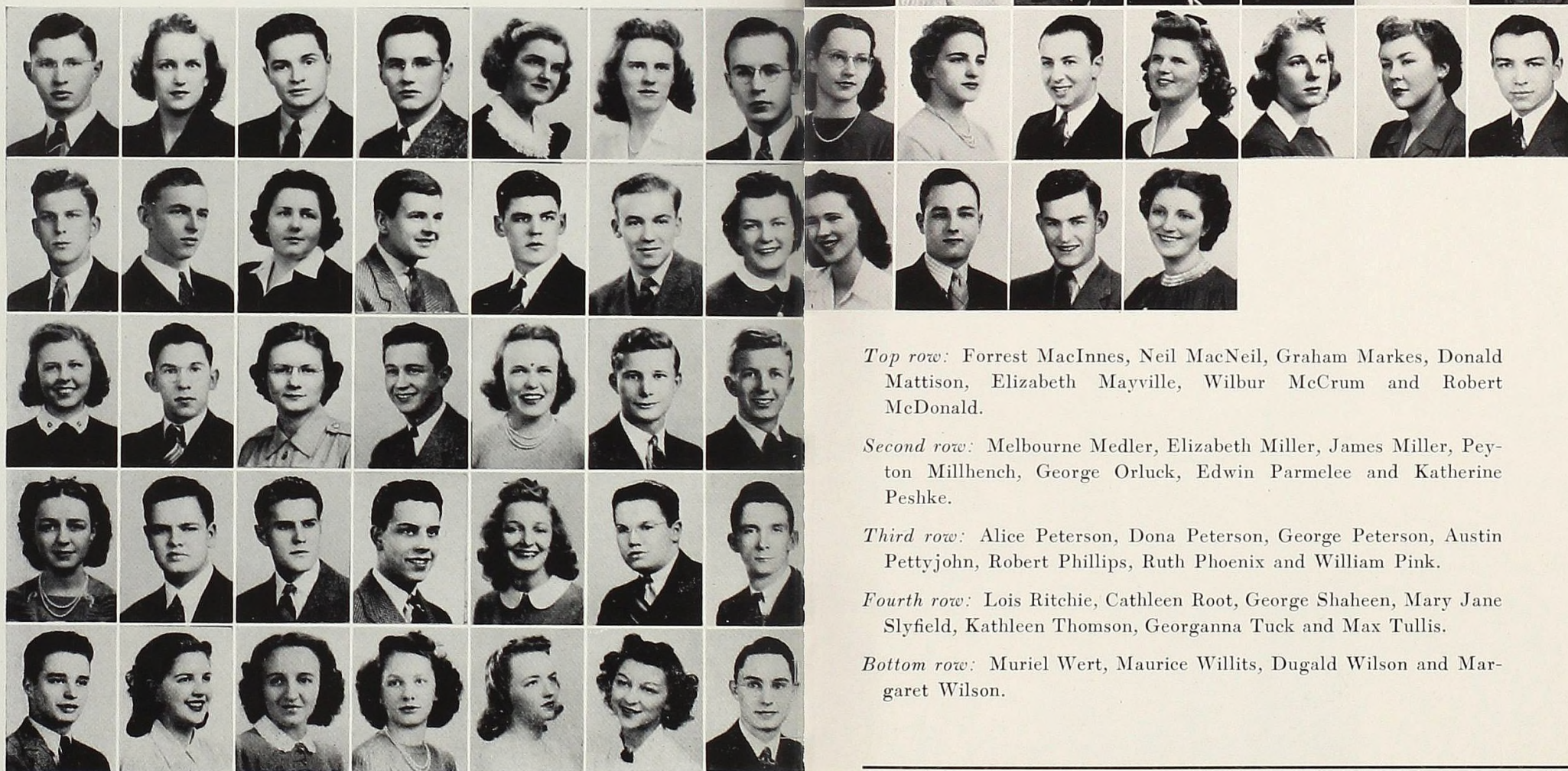
*Top row:* Donald Allured, Hannah Bach, Edwin Bradford, Clifford Bucholz, Marion Carter, Margaret Chambers and Richard Chesley.

*Second row:* Frank Closson, Charles Conzelman, Marjorie Croft, Stanley Davis, Preston Delavan, Jerry Duvendeck and Bettie Jane Fee.

*Third row:* Virginia Feighner, Richard Fishbeck, Janice Freiermuth, William Galinet, Constance Grimes, Paul Guider and Warren Hartt.

*Fourth row:* Lois Hawkins, Sutherland Hayden, Warren Heitman, John Hicks, Beverly Hopkins, Robert Hubler and David Kinney.

*Bottom row:* Henry Klein, Doris Koppin, Shirley Lahaie, Norma Lincoln, Wilma Lowry, Silena Luchini and Halvard Lyon.



*Top row:* Forrest MacInnes, Neil MacNeil, Graham Markes, Donald Mattison, Elizabeth Mayville, Wilbur McCrum and Robert McDonald.

*Second row:* Melbourne Medler, Elizabeth Miller, James Miller, Peyton Millhench, George Orluck, Edwin Parmelee and Katherine Peshke.

*Third row:* Alice Peterson, Dona Peterson, George Peterson, Austin Pettyjohn, Robert Phillips, Ruth Phoenix and William Pink.

*Fourth row:* Lois Ritchie, Cathleen Root, George Shaheen, Mary Jane Slyfield, Kathleen Thomson, Georganna Tuck and Max Tullis.

*Bottom row:* Muriel Wert, Maurice Willits, Dugald Wilson and Margaret Wilson.

# Freshmen

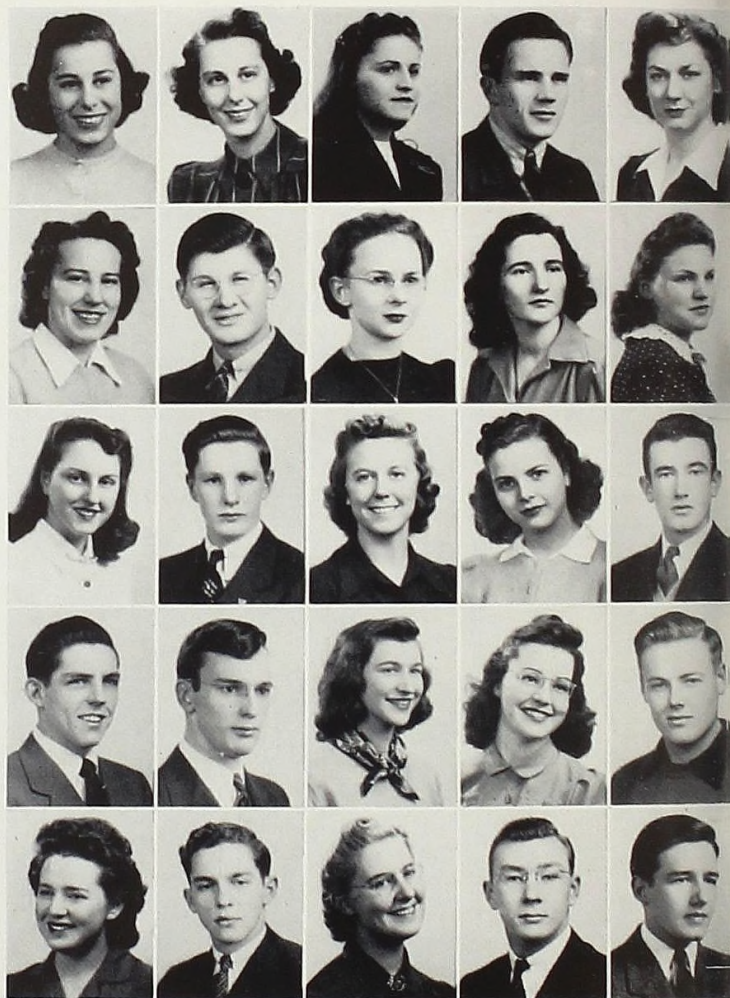
*Top row:* Jean Adler, Shirley Adler, Christine Agorgianitis, Jack Albright and Auburna Arnold.

*Second row:* Vera Baney, Philip Beauvais, Alice Bell, Catherine Bell and Eleanor Block.

*Third row:* Mary Anne Bowen, Walter Boylan, Beulah Brace, Ruth Browning and Robert Burke.

*Fourth row:* Wilbur Callahan, Francis Cogsdill, Mary Jean Coley, Maryhelen Connolly and Hugh Cresswell.

*Bottom row:* Veda Crewe, William Crimmins, Dorothy Culham, Herbert Dahl and Robert Dewar.



*Top row:* Marilyn Dewey, Harry Dittmar, Oliver Elliott, Tracy Ellis and Orlynn Eyer.

*Second row:* Betty Fischer, Thomas Fitch, Charlie Ford, Donna Jeanne Francis and Virginia Frank.

*Third row:* Paul French, Ann Fullerton, Alan Goodrich, Guile Graham and Warren Hagenbuch.

*Fourth row:* Kenneth Hathaway, Marjorie Hathaway, William Hawkins, Leona Hendrickson and Jean Huff.

*Bottom row:* William Hunter, Jack Kauffman, Harry Kirk, Rama Kirkwood and Marjorie Kuehn.

# Freshmen

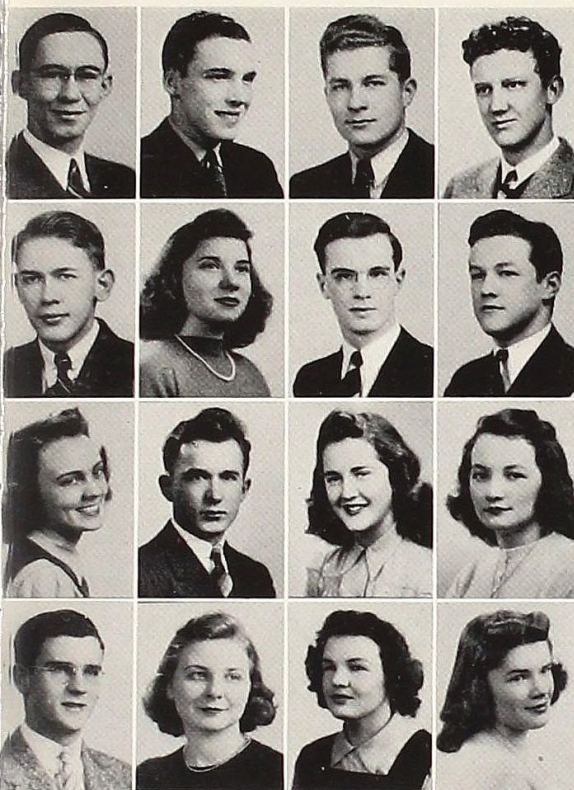
*Top row:* Helen Lindsay, Virginia Loughead, Shirley MacGregor and Barbara Malcolm.

*Second row:* Walter Mattison, Jeanne Maxson, Winifred McCain and Betty McClelland.

*Third row:* Betty McCulloch, Thomas McGrain, Donald McLogan and Lenore Meyer.

*Fourth row:* Robert Milham, Nancy Miller, Marie Monteith and Glenn Mutchler.

*Bottom row:* William Newton, Carol Peterson, Albert Pears and Betty Pecenye.



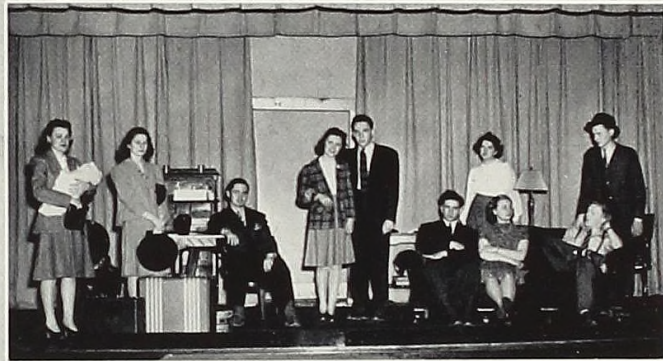
*Top row:* Derril Perdue, Kenneth Plaxton, Robert Reed and Robert Ruehl.

*Second row:* Arthur Sercrombe, Betty Jane Smith, Robert Smith and Donald Swope.

*Third row:* Mary Tomes, Walter Trochim, Ann Vorce and Dorothy Walton.

*Bottom row:* Duane Waters, Shirley Wenger, Catherine Wilkie and Jean Wilson.

# Campus Clubs



UPPER LEFT: Principals in the Mardi Gras staged amid color and excitement galore under the direction of the Misses Foley and Parrish and the French club. Left to right: Bruce Lindley, Wilbur McCrum, King Robert Jackson and Queen Mary Goodwyn.

UPPER RIGHT: One of the main features of the campus chapter of YWCA is the annual Christmas party for young girls of the town. Left to right: Mary Goodwyn, Blanche Bahlke, one of the youthful guests and Ruth Kolvoord.

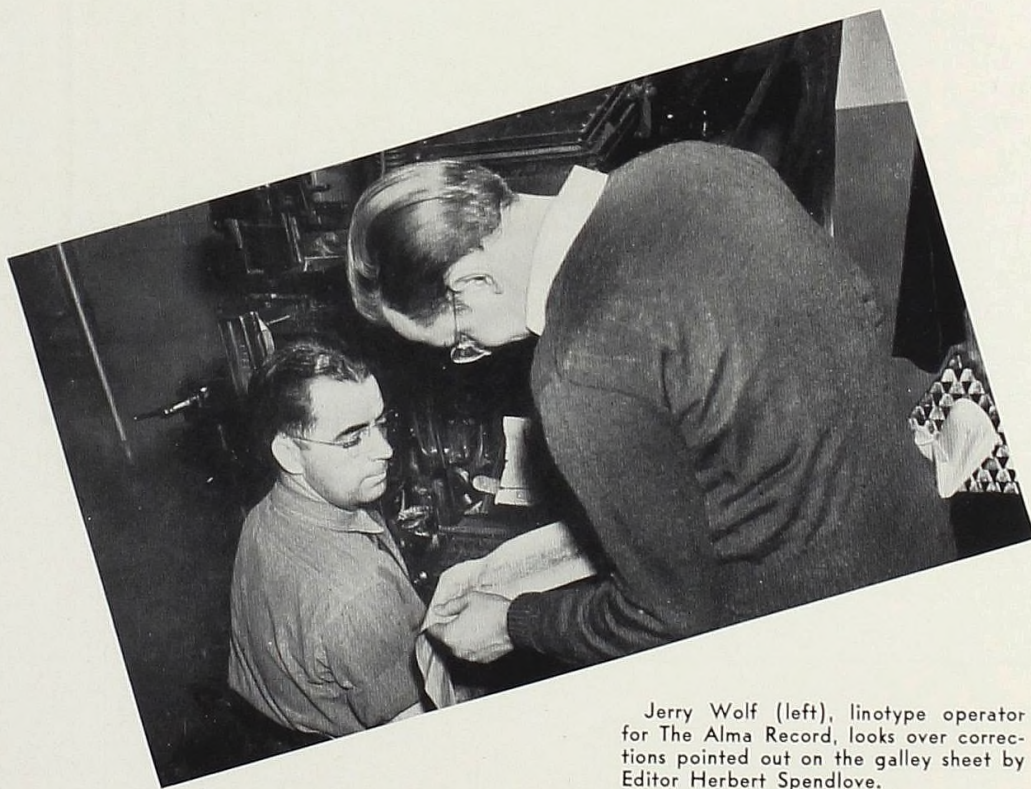
CENTER: The cast for "Skidding," successfully staged under the direction of Mr. Volpel. Left to right: Dona Peterson, Sally Reed, Gerald Lappin, Virginia Feighner, Kenneth Plaxton, Guile Graham, Florence Brown, Shirley Wenger, August Bernthal and Robert McDonald.

LOWER LEFT: A new organization on the campus was the Radio club: Left to right: Lionel Gibb, William Frier, Paul Hopkins, Edwin Parmalee, Austin Pettyjohn and Henry Broughall.

LOWER RIGHT: The International Relations club is one of the standbys. Here, left to right, are the senior members and the officers: (standing) James Emms, President Marvin Koffman and Betty Thomas; (seated) Secretary George DeHority, Miss Florence Steward, advisor, and Adolf Dominguez, Mexican consul at Detroit, one of the guest speakers.

# Almanian

THE thirty-fourth volume of *The Almanian*, weekly student publication of Alma College, was published under the direction of Editor-in-Chief Herbert Spendlove, holding this office for the second straight year by a student vote of confidence. Faculty support was given by Carney Smith, while Victor Fox looked after the business end of things. Editor Spendlove was assisted by George DeHority, associate editor who wrote "World in Review"; Arthur Russell, news editor; Betty Cleland, features; Kathleen Thomson, society; Clifford Leestma, music; and Lois Lindsay, alumni editor. Jack Crittenden headed the sports department, together with Marvin Koffman, Sidney Kane and Betty Pecsénye, who reported Co-Rec, an innovation this year. All these, together with a staff of sixteen reporters, gave Alma its "scandal sheet."



Jerry Wolf (left), linotype operator for *The Alma Record*, looks over corrections pointed out on the galley sheet by Editor Herbert Spendlove.



Betty Pecsénye (left), assistant editor, autographs a yearbook for her friend, Betty McCulloch.

# Scotsman

CONTINUING the same smaller trimmed-page size as last year, *The 1941 SCOTSMAN* employed an informal motif, added padding to the cover, and used more shots of student life. This year, for the first time, the yearbook came completely under the student activity plan. Elected to head the staff were Jack Crittenden as editor and Wilfred Webb as business manager. Although only a freshman, Betty Pecsénye proved of such worth as to achieve the assistant editor position. Other editorial staff members were Helen Lindsay, Rama Kirkwood and Robert Jackson. Assisting on the business staff was James Cotter. Dr. William Seaman was again faculty advisor.



## Ensemble, Kiltie Band



Left to right: Deane Fink, Warren Wille, Jenne-Louise McCall, Henry Broughall, Margaret Chambers and Beryl Harrison.

The colorful kiltie band forms an "A" at a night game.



THE two main functioning showpieces of the instrumental music department were the kiltie band and the string ensemble. The former, one of the very few such organizations in the country, was again under the able leadership of Prof. Jess Ewer. Main functions of the band were a week's tour of the Thumb, playing and marching at football games, aiding in Campus Day, and the annual concert for seniors. The string ensemble, under Miss Beryl Harrison, presented classical and semi-classical music in the Alma territory.

## Choir

CONTINUING with his fine work of the past, Prof. Jess Ewer again had two outstanding choral groups, the chapel choir and the A Cappella Choir. The former group, because of its more adaptable size, was used on novelty and lighter numbers, while the latter organization presented more of the sacred and secular type music. A good example of the tributes paid to the choir is: "A fine musical organization superb in its delicate shadings and quiet crescendos." The chapel choir presented twenty-six concerts during an eleven-day tour of northern Michigan, and both choirs were used as the mainstays of the program at WWJ. Soloists this year were Eileen Carrier, Clifford Leestma, Russell Sterling and Deane Fink. Choir officers were Mavis Harrison, president; Betty Thomas, vice president; Mary Lou Williams, secretary; and Clifford Leestma, manager.

The chapel choir of nineteen voices taken from the larger A Cappella choir of fifty.



# Speech Department

THE speech department, headed by Carney Smith, had the most successful season in its three-year history at Alma.

The debate squad traveled a total of 3,300 miles in four states, met teams from fourteen states, and participated in one hundred and twenty-two decision contests, winning eighty-three. In addition to many demonstration debates, teams were entered in tournaments at Illinois Normal, Kalamazoo, Manchester, Western State, Wayne, Michigan State, and the Delta Sigma Rho tournament at Madison, Wisconsin.

At Illinois Normal, the teams in the "A" division tied for second; at Manchester, the squad placed third; at Western State, the freshman squad swept the meet by winning all their debates as did the "A" division teams at Madison.



Frosh winners, left to right: (standing) Walter Boylan, Kenneth Plaxton, Coach Smith, Kean Angelus, Helen Lindsay and Lenore Meyer; (seated) Dona Peterson, Rama Kirkwood and Howard Clark.

Delta Sigma Rho winners, left to right: Bruce Mellinger, Woodrow Wooley, Jack Gilchrist, Coach Smith and Harold Draper.

Carney Smith (left) presents an honorary membership in the Alma chapter of Tau Kappa Alpha to Col. Frank Knox, Secretary of the Navy.



Members of these championship teams were Harold Draper, Jack Gilchrist, Woodrow Wooley, Bruce Mellinger, Kenneth Plaxton, Howard Clark, Walter Boylan, Kean Angelus, Rama Kirkwood, Helen Lindsay, Lenore Meyer and Dona Peterson. Other members of the squad were Dave Kinney, Bruce Lindley, Paul Hurrell, Wilbur McCrum, Virginia Feighner, William Galinet, Jerry Duvendeck and Ann Vorce.

Climaxing the year, the ninety-ninth chapter of Tau Kappa Alpha, national honorary forensic society, was formally installed at Alma on April 24. Charter members were Woodrow Wooley, Harold Draper, Bruce Mellinger, Charles LeClaire, Marvin Koffman and Lois Lindsay. Honorary memberships were presented to Col. Frank Knox, Prof. Hamilton, Prof. Spencer, Coach Smith, and President Dunning.

In the extemporaneous speaking contest, Woodrow Wooley and Lois Lindsay were the winners with Harold Draper and Sally Reed as the runner-ups. In the state intercollegiate contest, Mr. Wooley placed second. He was again a winner, along with Catherine Wilkie, in the oratory contest, with David Gainey and Mary Catherine Bell second.

Coach Smith was elected vice president of the Michigan Association of Teachers of Speech, and will automatically succeed to the presidency next year.

The speech season officially closed with a speech banquet at which awards were presented and Dr. Dunning was the speaker.

# Alpha Theta

ON the opposite page is a typical scene in the Alpha Theta room as some of the members combine sunshine, the view from the window, good nature and friendly talk for a pleasurable half hour or so. Left to right: Constance Grimes, Maryhelen Connolly, Vera Pitcher, Hannah Bach and Jean Wilson.



## *Active Members:*

Hannah Bach  
Mary Catherine Bell  
Mary Anne Bowen  
Margaret Chambers  
Betty Cleland  
Maryhelen Connolly  
Bette Dugal  
Bettie Jane Fee  
Donna Jean Francis  
Mary Jo Furstenberg  
Constance Grimes  
Marion Hass  
Beverly Hopkins  
Virginia Loughhead

Shirley MacGregor  
Estelle W. Martyn  
Marie Monteith  
Carol Paterson  
Vera Pitcher  
Sally Reed  
Constance Sieg  
Betty Thomas  
Kathleen Thomson  
Mary Tomes  
Georgana Tuck  
Ann Wacker  
Mary Lou Williams  
Jean Wilson

ALPHA Theta sorority, the first literary organization of its kind on the Alma campus, was founded by Miss Bernice Hunting, daughter of the first president of the college, on March 24, 1890.

The extremely active "Thetas" have acted as an inspiration and as a guide to all with whom they have come in contact, both off and on the campus.

Their September girl-bid dance opened both their active program and the entire social season of the college, as has been the custom for some time. This was followed by the Homecoming banquet, the formal initiation dinner, the spring formal, the June breakfast and the annual picnic given by the patronesses.

With the full co-operation of the other officers and members, Bette Dugal and Constance Sieg presided successfully over the first and second semesters, respectively.

# Philomathean

HAVING an afternoon tea seems to be one of the functions of Philomathean sorority, or at least that is what the picture on the opposite page would indicate. President Allison pours while sister-members enjoy tea and conversation. Left to right: Elizabeth Miller, Winifred McCain, Alice Bell, Dorothy Allison, Ruth Kolvoord, Ann Carter, Shirley Lahaie, Marjorie Kuehn and Catherine Wilkie.



## *Active Members:*

Dorothy Allison  
Alice Ball  
Florence Brown  
Eileen Carrier  
Ann Carter  
Jeanette Dickinson  
Ruth Kolvoord  
Marjorie Kuehn  
Shirley Lahaie  
Lois Lindsay

Jenne-Louise McCall  
Betty McCulloch  
Winifred McCain  
Elizabeth Miller  
Irma Niederschmidt  
Betty Peesenye  
Ruth Reed  
Mary Jane Slyfield  
Anna Jean Sommerville  
Catherine Wilkie

PHILOMATHEAN, originally a pre-college organization, began to function as a literary society in the fall of 1909. It has only been within the last ten years that the organization has been called, and has been functioning as, a sorority.

High ideals, true friendship, loyalty, courage and faith are the important factors that make up a real "Philo" according to their sorority's ideals and principles.

They began this last year by winning first place in the Homecoming parade for their float, with pretty Anna Jean Sommerville in an expanse of ruffle skirt in the spotlight. The annual Philo Prance, a girl-bid dance, and formal dinners for the freshman women and the patronesses were other successful activities. Their formal dinner-dance, held at the Midland Country club, ended their thirty-first successful year.

Dorothy Allison had the honor of leading the Philomatheans throughout the entire year.

# Kappa Iota

ONE of the most popular informal parties of the year was the annual Varsity Swing, sponsored by Kappa Iota sorority in the Odd Fellows Hall. The picture on the opposite page shows how the student body went for this girl-bid, strictly sweater dance in a really big way.

## *Active Members:*

Christine Agorgianitis  
Blanche Bahlke  
Beulah Brace  
Margaret Conrad  
Marjorie Croft  
Helen Dehnke  
Phyllis Dunnette  
Virginia Frank  
Lois Goldie  
Mary Goodwyn  
Mavis Harrison  
Rama Kirkwood  
Norma Lincoln

Silena Luchini  
Barbara Malcolm  
Lenore Meyer  
Nancy Miller  
Katherine Peshke  
Alice Peterson  
Bette Redman  
Lois Ritchie  
Cathleen Root  
Vinnette Simmons  
Jeanne Speerstra  
Shirley Wenger  
Muriel Wert



KAPPA Iota, the second youngest sorority, celebrated its twentieth birthday at Alma College this year. It was founded by Dean Elizabeth Roberts in 1921.

Its three-fold purpose to promote an interest in all forms of literature, to inspire higher ideals, and to further the social activities of this institution, makes it one of the outstanding organizations on the campus.

It excels athletically as well as scholastically, having retained the women's basketball trophy for two consecutive years.

Under the fine leadership of Mavis Harrison and Jeanne Speerstra for the year, and with the co-operation of every member, the once-again successful "Varsity Swing," the Pirate Party for freshman women, the Homecoming banquet, and the annual formal dinner-dance at the Midland Country club were highlights on the society's social calendar.

# Pi Sigma Nu

MEMBERS of Pi Sigma Nu sorority were justly proud of the loving cup which they won for having achieved a high scholastic standing as a group and ranking above other sororities. Shown on the opposite page admiring the award are (left to right): Lois Hawkins, Veda Crewe, Virginia Feighner, Elizabeth Mayville and Doris Koppin.

Pi Sigma Nu, in its third successful year of existence, was organized in the spring of 1939 by a committee chosen by Former Dean Florence Steward with the idea of relieving pledging difficulties found with only three sororities.

The complete development of the all-around girl is signified by the Greek letters of the name of the sorority, and, thus, this group has one of the highest standards of any of the sororities.

Although the baby sorority on the campus, this group is the proud holder of the cherished scholarship cup, won for having the highest scholastic attainment as a group during the first semester of school.

Their second annual Homecoming banquet began their festivities for the year, while several teas and the memorable rushing party with St. Patrick's Day as the theme followed. In honor of the new members, a dinner at Wright Hall and a theatre party were held.

Doris Koppin successfully filled the office of president during this last year. Other officers were Lois Hawkins, vice president; Dona Peterson, treasurer; and Virginia Feighner, secretary. Members, in addition to these, included Elizabeth Mayville, Jean Merrill, Vera Baney, Veda Crewe and Virginia Reiberg.





Left to right: Florence Brown, Eugene Nixon, Lee Clack, Bruce Mellinger, Arvo Juhola, Woodrow Wooley, George DeHority, Gerald Lappin and Marvin Koffman.

## Phi Sigma Pi

THE intellectual aristocracy of the campus, Phi Sigma Pi, honorary scholastic society, was guided successfully through its thirteenth year by Eugene Nixon, president. Assisting him were Arvo Juhola, vice president, and Florence Brown, secretary.

New members initiated the first semester were Woodrow Wooley, Bruce Mellinger and George DeHority. Those initiated second semester were Llewelyn Clack, Gerald Lappin and Marvin Koffman. At graduation time, alumni members will be elected.

During the year, the group sponsored a chapel program, purpose of which was to educate the student body as to the aims and requirements of the society. At that time, the loving cup given in recognition of the sorority which attains the highest scholastic average for the previous semester, was presented to Pi Sigma Nu.

Eventually the group hopes to affiliate itself with one of the national honorary scholastic societies, such as Phi Beta Kappa.

## Women's League

THE Women's League, which was organized in 1932, has as its main purpose the supervision of business matters between the four sororities, especially in regards to the matter of rushing and bidding.

During this last year the group, headed by President Mavis Harrison, worked out a new system of rushing and bidding with the dean of women, Miss Kathleen Gillard.

This organization, in addition to its type of work and duties, differs from the Wright Hall Senate in that its membership includes both residents of the women's dormitory and downtown students. Its functions consisted of an annual fall tea and the Women's League formal, the only all-college girl-bid formal of the year.

Left to right: Betty Cleland, Mary Goodwyn, Mavis Harrison, Betty Thomas, Doris Koppin, Dorothy Allison and Ruth Kolvoord.



# Zeta Sigma

ZETA Sigma fraternity, which was organized a year after the college opened, celebrated its fifty-third year successfully. Among the outstanding alumni are President John W. Dunning and Secretary of the Navy Frank Knox. The fraternity was active in all parts of school life. Various members participated on the football, basketball, track, golf, tennis and baseball teams. The school paper was edited in the back room of the house every week by Herb Spendlove, editor for a second year. The annual spring formal was held in the Crystal Room of the Bancroft Hotel, Saginaw, with John True as general chairman. All members agreed that it was the finest fraternity party they had ever attended. Presidents for the three electoral terms were John True, Richard Krall and Herbert Spendlove.



## *Active Members:*

Peter Batsakis  
 Wilbur Callahan  
 Francis Cogsdill  
 Charles Conzelman  
 Oliver Elliott  
 Tracy Ellis  
 James Emms  
 Cyril Firth  
 Charlie Ford  
 Warren Heitman  
 Douglas Hinkle  
 Albert Katzenmeyer  
 Henry Klein  
 Marvin Koffman  
 Richard Krall  
 Robert Lites  
 Forrest MacInnes

Neil MacNeil  
 Thomas McClelland  
 Alfred McCuaig  
 Thomas McGrain  
 James Miller  
 Joseph Morse  
 George Orluck  
 Donald Peters  
 William Prescott  
 Edwin Riggs  
 Arthur Russell  
 George Shaheen  
 Stanley Smith  
 Herbert Spendlove  
 John True  
 Max Tullis  
 Theodore Welgoss  
 Ralph Wynkoop

Refreshments proved to be a huge success at the open houses of Zeta Sigma fraternity, as attested by the pictures on the opposite page. On the left Stan Smith is loaded with a few delectables. On the right, eats are enjoyed by (left to right) Jeanne Speerstra, Doris Koppin and Jack Lea.



# Phi Phi Alpha

A LEADER on the campus of Alma College for forty-three years, Phi Phi Alpha is rich in traditions and high standards. Its members lead a varied and full campus life, playing a leading role in scholarship, school government, sports, music, speech and social activities. Scholastically Phi Phi Alpha ranks among the leaders, twenty-one members taking their place on the semester honor roll. For the second consecutive year a member of this fraternity was awarded the Silliman Scholarship. Above all Phi Phi Alpha supplies the associations and friendships which determine the true value of an education. Heading the organization as presidents for the three electoral terms this year were Louis Friedrich, Wilfred Webb and William Carr, respectively.



## *Active Members:*

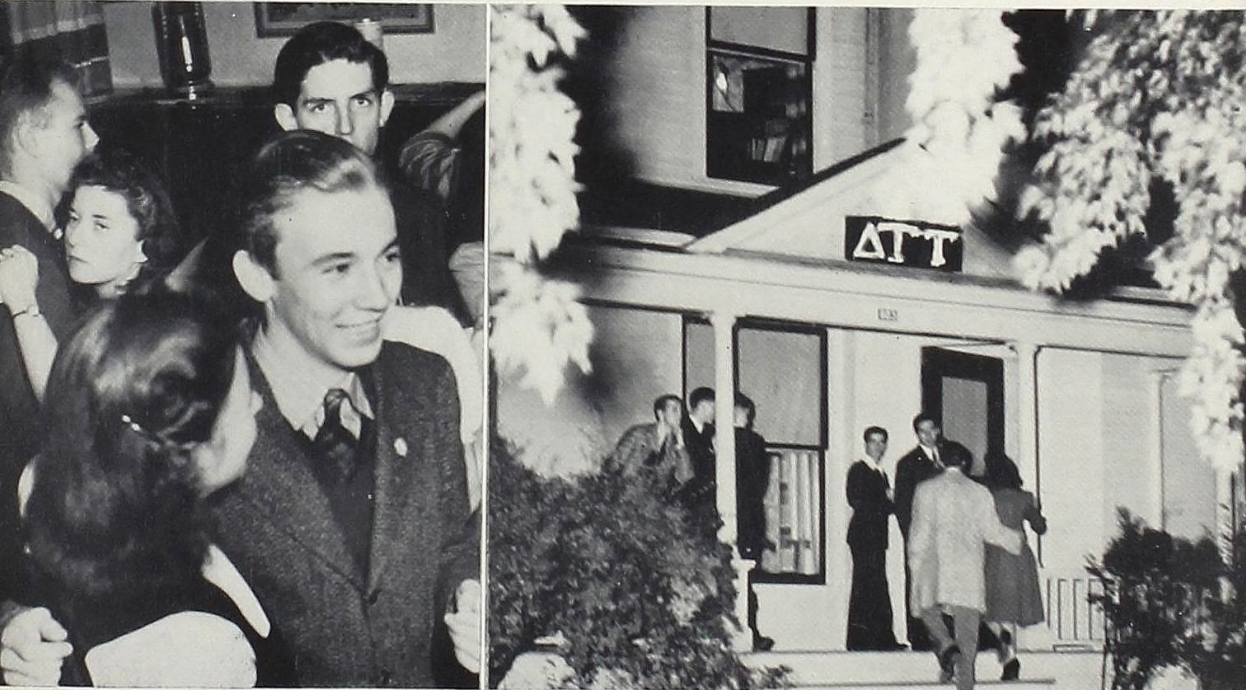
Warren Allman  
 Ralph Banfield  
 Gerald Barnett  
 Keith Carey  
 William Carr  
 Richard Chesley  
 Benjamin Clark  
 Frank Closson  
 Donald Converse  
 James Cotter  
 William Crimmons  
 Herbert Dahl  
 Robert Dewar  
 Preston Delavan  
 Roger DeNoyelles  
 Harold Draper  
 Richard Fishbeck  
 Thomas Fitch  
 Victor Fox  
 Paul French  
 Louis Friedrich  
 Jack Gilchrist  
 Donald Gillard  
 Ernest Gillard  
 Alan Goodrich  
 VeDell Guernsey  
 Robert Hanzel  
 Fred Hartt  
 Warren Hartt

William Hawkins  
 Jack Heimforth  
 John Hicks  
 Andrew Horne  
 Robert Hubler  
 Aymour Johnson  
 Bruce Kane  
 Gerald Lappin  
 Herbert Lints  
 Graham Markes  
 Walter Mattison  
 Claude Maxwell  
 William McLain  
 Charles McLean  
 Bruce Mellinger  
 Robert Milham  
 Eugene Nixon  
 Edwin Owen  
 Derril Perdue  
 Thomas Purdy  
 William Quinn  
 Robert Reed  
 Francis Sherman  
 Walter Trochim  
 Carl Wahlsten  
 Duane Waters  
 Wilfred Webb  
 Carl Wickman  
 Maurice Willits

The Phi Barbecue, planned by Francis Cappaert, was one of the best outings of the year. Left picture: Cattie does the carving. Right: Gerald Barnett pours while David Kinney, Edwin Riggs and Kathleen Thomson help themselves.

# Delta Gamma Tau

DELTA Gamma Tau fraternity, organized three years ago because of the large size of the class of '42, passed its second year in the house on West Center street in great style. Its members were leaders in all campus activities and ranked high scholastically as a group. In spite of its youth, it has become an important cog in the campus wheel under its code of promoting the highest moral, social and intellectual ideals, and in furthering a friendly spirit between all fraternity men of Alma College. Organized by freshmen in 1938, next year will see the first large group of senior members. Barney Roepcke, first president, is the only alumni member and Sidney Kane was the only senior this year. Presidents for the two semesters were Bruce Lindley and Clifford Leestma.



## *Active Members:*

Donald Allured  
 Albert Arklie  
 Edward Baklarz  
 August Bernthal  
 Walter Boylan  
 Ralph Brown  
 Robert Brown  
 Maxwell Cook  
 Jack Crittenden  
 George DeHority  
 Harry Dittmar  
 Jerry Duvendeck  
 Andrew Edgerton  
 Marvin Fenner  
 Deane Fink  
 Silvio Fortino  
 William Galinet  
 George Gillert  
 Paul Guider  
 Sutherland Hayden  
 Clarence Hoogerland

Walter Howe  
 William Hunter  
 Paul Hurrell  
 Robert Jackson  
 Sidney Kane  
 David Kinney  
 Clifford Leestma  
 Bruce Lindley  
 Donald Mattison  
 Wilbur McCrum  
 Donald McKeith  
 Melbourne Medler  
 William Newton  
 George Peterson  
 Kenneth Peterson  
 Robert Phillips  
 Kenneth Plaxton  
 Raymond Robertson  
 Robert Ruehl  
 Arthur Sercrombe  
 Albert Wilson  
 Lynn Wilson

Dancing proved popular at the Delta open houses. A shot of the guests arriving was a good opportunity to show off the new neon fraternity sign.



(1) Getting ready for a big night, (2) "Alma Mater" by her newest sons, (3) Third Degree, (4) The warm-up, (5) This is no skin off your nose, or is it?, (6) Barbershop harmonizers, (7) The strength of the class of '44, (8) Challenged by the class of '43, (9) Little symfunny, and (10) Happy ending thanks to Doc Jaekel.

## Freshman Daze

COME September, 1940, and the spirit of Freshman Daze again pervaded the campus. After a formal welcome by the school administration and an informal one by the upperclassmen, the Class of 1944 set up headquarters in Wright and Pioneer Halls. Robert Brown was elected to lead the class, with Rama Kirkwood as first assistant, Alice Bell as secretary, and Harry Kirk directing the finances.

After an un auspicious but precedent-breaking beginning by way of losing the flag rush, the class put on an impressive Frosh Frolic in the gymnasium on November 16 with President Brown as general chairman. On Homecoming Day, the aristocracy of the class was represented by Homecoming Queen Bette Redman and her court.

The girls, after the usual season of ribbons, staged a little rebellion with a flare of class spirit, and balked at wearing the traditional green emblems two additional weeks. The case was finally decided by arbitration and bitterness was soon forgotten. The year was brought to a successful conclusion by an all-freshmen picnic at Turck's Park, followed by a theater party. General chairman for this affair was Rama Kirkwood.

Outstanding entertainment features put on by the class were the girls' program for Wright Hall residents and the boys' pajama parade. On the opposite page, various stages of the latter ordeal are pictured in candid form. The entire student body participated in the pajama parade in some capacity, and each student was given a free movie ticket.



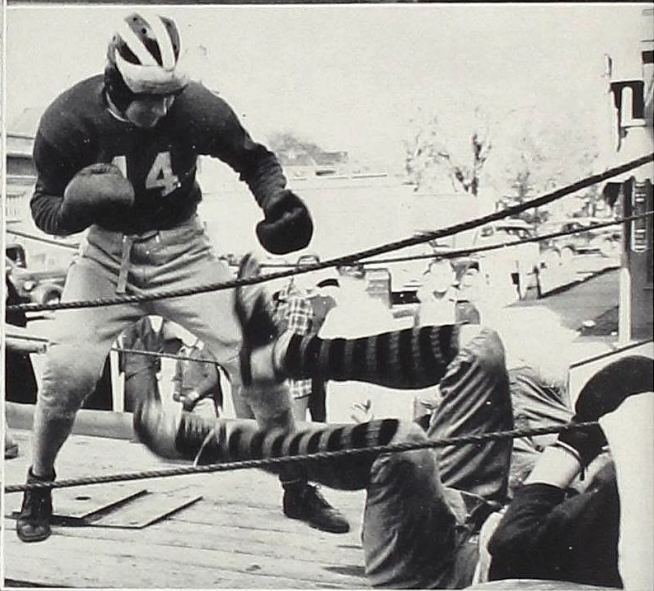
## We Work . . . .

A COLLEGE community necessarily includes many types of work outside of actual study, as shown by these pictures. Upper left: Chef Victor Manzullo displays an icing model of Alma's new chapel. Upper center: The dress-making class of the art department proved popular, as evidenced by Betty McCulloch, Wilma Lowry and Lois Ritchie. Upper right: Here are two of the chief maintenance workers, Victor Newnum, foreman, atop the ladder, and Jack Heimforth, one of the more faithful student helpers. Lower left: Mrs. Hutton, house mother of Wright Hall, pulls taffy for the girls' annual rummage sale. Lower center: Desk duty in the reception room of Wright Hall was one of the common jobs for women, as Ruth Browning will tell you. Lower right: Janice Freiermuth, a graduate nurse who is also a student at Alma, tests the pulse of Georgana Tuck.

A COLLEGE community must have recreation, social life and good times. Alma has its share of these, too. The layout below will give some idea of the hilarious time had by all at one of the fun-fests, the "Womanless Wedding" staged by the male students and faculty members as the opening event of Homecoming. Many were the shrieks and roars of mirth as Alma's proud males paraded in feminine attire. The biggest surprise, coming after a long procession of beguiling beauties and what not, was the appearance of the bride-to-be, none other than Charlene Johnson. This tall mincing beauty made quick work of the groom, dapper Harold Draper who looked like he was standing on his knees, and the couple lived . . . .

## . . . And How





# Homecoming



Ruling as freshman queen was Miss Bette Redman of Alma.

HUNDREDS of alumni, young and old, came back to their Alma Mater for the forty-ninth Homecoming festivities on October 26 and were not disappointed with the gala program planned for them.

Ruling over the various activities was pretty, dark-haired Bette Redman, freshman queen, and her court which was composed of Vinnette Simmons, Rama Kirkwood, Ruth Browning, Marilyn Dewey and Barbara Malcolm.

With banners flying and the Kiltie band playing, the traditional Homecoming parade on Saturday morning proved to be one of the best ever. At Bahlke Field, the stands were filled to capacity as enthusiastic fans saw one of the biggest games of the year, Alma versus Kalamazoo, with the Scots coming through for a 19-2 victory.

After the annual Homecoming banquets of the sororities and fraternities, an all-college student council dance was held in the gymnasium to bring to a close another successful Homecoming.

## Christmas at Alma

WITH the approach of Christmas and the holidays, the campus took on a festive air and Wright Hall was decked out in Christmas attire, complete even to the mistletoe. Preceding the Christmas vacation, a complete program of activities for the season was held.

Sunday, December 15, special Christmas vespers, planned by students, were held in the First Presbyterian Church. Monday the campus chapter of YWCA sponsored a Christmas party for fifty needy children, and the Delts gave a party for a group of small boys. Tuesday was the WAA Chocolate at The President's House, with Past-president Betty Thomas being honored and letters distributed.

Wednesday, the A Cappella choir gave its annual concert of Christmas music in the First Presbyterian Church, clad in their maroon and white robes and amidst a sacred setting which added much to the beauty of the occasion. Thursday was the Wright Hall formal dinner, following which the women and members of the faculty present held their annual party and Santa Claus himself distributed gifts. Friday night there were parties galore with Pioneer Hall, the Delts and the Phis all doing their bit. Saturday found everyone packed and ready, and the annual trek homeward for the holidays began.





Queen of Scots Bette Dugal and her court: (left to right) Sally Reed, Vera Pitcher, Mary Goodwyn, Jeanne Speerstra, Mavis Harrison (seated), Lois Goldie and Marion Hass. Betty Thomas is not pictured.



## Campus Day

ONE of the highlights of the year at Alma is the annual Campus Day, celebrated this year on May 21. Miss Bette Dugal was crowned Queen of Scots by the former Gene Lewis, 1940 sovereign, in a royal ceremony in the grove, following which a full day of events was held. On the opposite page are candid shots taken from the 1940 celebration, feature of which was the inauguration of an evening pageant staged by the women's physical education department in conjunction with the kiltie band.





## June Week

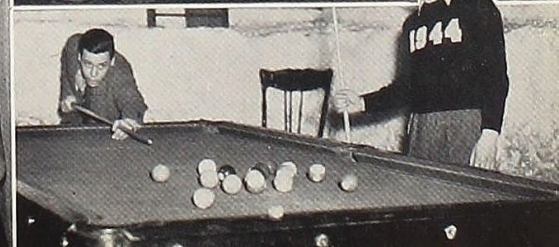
ONE of the featured periods of the school year and one which remains as a living memory for all students who are graduated from college, regardless of the year, is June Week. It is during this time that the senior students bid farewell to their college scenes and years, that they are given official recognition for their work, and that they receive their bachelor degrees.

A full program of activities for the graduating seniors is held during this week, starting with the baccalaureate address on Sunday and continuing through the actual commencement exercises on Saturday morning. Among the highlights are the choir concert, the band concert, the farewell to the buildings, the senior breakfast at The President's House, the academic procession to Bahlke Field where an outdoor commencement is planned for this year, and the actual exercises.

Included in the latter are the announcement of honors, changes in the faculty, the commencement address, this year by Dr. Gordon J. Laing, alumni dean of the University of Chicago, and the presentation of diplomas.

All of these things will remain with the graduating seniors as fond memories as they go forth to use their knowledge and experience in coping with the world's problems and in the everyday art of living.





## Administration (Continued)



A. G. STUDER  
Treasurer



L. ROBERT OAKS  
Executive Secretary



CHARLOTTE KLEIN  
Assistant Librarian



MRS. D. W. ROBINSON  
Library



MRS. ELLA LOVE HUTTON  
Housemother, Wright Hall



MRS. EUARDA ABERNETHY  
Administrative Assistant

## To the Reader

TOO often the college student calls for his copy of *The Scotsman*, enjoys its record in both pictorial and written form, and goes away thinking he has received something for which he has completely paid. He does not appreciate the fact that the allotment received from the student activity fund has paid only a part of the cost of publication. In order for the book to be available to students in this way, it is necessary to solicit advertising which is really nothing more than a business card.

It is true that many of the merchants of Alma and other towns with whom the college does business derive a considerable source of benefit from their connections with the college. Nevertheless, it is these same merchants who make the yearbook possible. To them, *The 1941 Scotsman* does honor. They have done their share!

May we ask you to do your share and keep them in mind when contemplating future purchases, and take the time to tell them that you are appreciative of a better yearbook made possible only through their generous co-operation.

**ALMA DAIRY**

**MODERN SODA BAR  
SODAS, SUNDAES  
HOT CHOCOLATE**

Made with Whole Milk

Open Nights 413 Wright Ave.

A. T. SHOLTY, Prop.

Compliments of a Friend of

Alma College

Compliments

of

**Alma State Savings Bank**

Alma, Michigan

Member Federal Deposit Insurance  
Corporation

A Friend



**F. J. GRAHAM, M. D.  
B. J. GRAHAM, M. D.  
K. P. WOLFE, M. D.**

Pollasky Block

ALMA, MICHIGAN

**PAUL R. CASH**  
Attorney-at-law

Pollasky Block

ALMA, MICH.

Compliments of

**W. D. BALTZ CO.**

ALMA MICH.

Compliments of

**AD. SEIDEL & SON**

1245 W. Dickens Ave.

CHICAGO, ILL.

**L. G. BALFOUR COMPANY**

Attleboro Massachusetts

KNOWN WHEREVER THERE ARE  
SCHOOLS AND COLLEGES

Contracted to supply Commencement Invitations  
and also Official Jeweler to Alma College  
Varsity Club and Student Council

Branch Office — Box 123  
Toledo, Ohio

**CHARLES H. GOGGIN**  
Attorney-at-Law

Pollasky Block

ALMA MICH.

**DR. E. R. REMSBERG**

Osteopathic Physician

116½ E. Superior St.

ALMA, MICH.

**HOME LUMBER & FUEL CO.**

"Better for Building"

Phone 19

Alma, Mich.



Wright Hall, Women's Dormitory

COMPLIMENTS  
OF

•  
  
**Consumers  
Power  
Company**

Best Wishes To The  
Class of '41

•  
  
**The  
Union Telephone  
Co.**

•  
  
MANAGEMENT AND EMPLOYEES  
of Alma, Michigan

Compliments of  
**GITTLEMAN'S STYLE SHOP**  
ALMA, MICH.  
  
"Where Fashion Reigns"

Compliments  
of  
**GOLD PRIZE COFFEE CO. INC.**

Best Wishes  
from  
**YOUR BUR - PAT MAN  
DON VOELKER**  
  
representing  
**Burr, Patterson & Auld Co.**  
"America's Oldest Fraternity and Sorority  
Jewelers"

**Church Jewelry Co.**  
Be on time all the time with a watch from  
**CHURCH'S  
PERFECT DIAMONDS**  
A gift of beauty is a joy forever.  
Superior at State Ph. 237

Compliments of  
**STRAND THEATRE**  
Central Michigan's  
Finest Theatre

ALMA MICHIGAN

**TRY A TANKFUL OF LEONARD  
GASOLINE**

and be convinced it pays to buy at the sign  
of the Leonard flag



**MOTORS GO FOR IT!**

**LEONARD REFINERIES, INC.**  
ALMA, MICH.

Compliments  
of

**Frederickson Motor Sales**  
Dodge and Plymouth Dealers

ALMA MICH.

# MILLER-DAVIS COMPANY

Engineers & Builders

KALAMAZOO, MICHIGAN

**CRYSTAL PAVILION**  
CRYSTAL, MICHIGAN

Featuring  
the Finest in Dance Bands

Always a Big Time at Crystal  
Central Michigan's Finest

VIC R. HARRELL, Mgr.

**Arctic Dairy Products**

406 Bridge St. ALMA, MICH.

★ ★ ★

★ ★

Undergraduates and Alumni of Alma  
College are always welcome at  
this beautiful Club House

★ ★

Perfect for proms, fraternity or class parties,  
serving the finest food from all the world.

**Midland Country Club**  
MIDLAND, MICHIGAN

Compliments of

**Andrew Ellis Produce Co.**

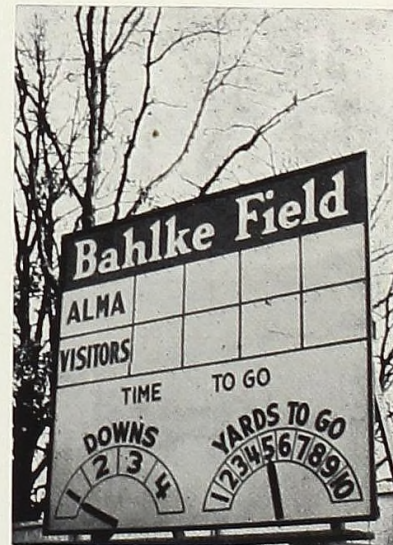
Saginaw, Michigan

The Office  
 OF  
**CHARLES Z. KLAUDER**  
 ARCHITECTS

FAITHFUL TO OUR  
 TRUST SINCE 1880

**First State Bank**  
 ALMA, MICHIGAN

Federal Deposit Insurance Corporation



# EAST SIDE DAIRY

PASTEURIZED CREAM AND MILK

COMPLETE LINE OF DAIRY PRODUCTS

Wayne E. Devereaux, Owner

Phone 242

ALMA, MICHIGAN

## The Bancroft House

SAGINAW

Solicits the Patronage  
 of  
 Alma College

CAFE

COFFEE SHOP

PRIVATE DINING ROOMS



REDMAN TRAILER CO.

ALMA

MICH.

When you think of flowers  
 Think of

**CAPLE'S  
 FLOWERS**

"Alma's Favorite"

DON WALSH, Prop.

Compliments of

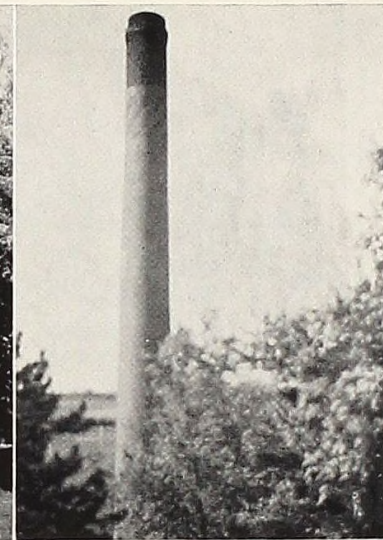
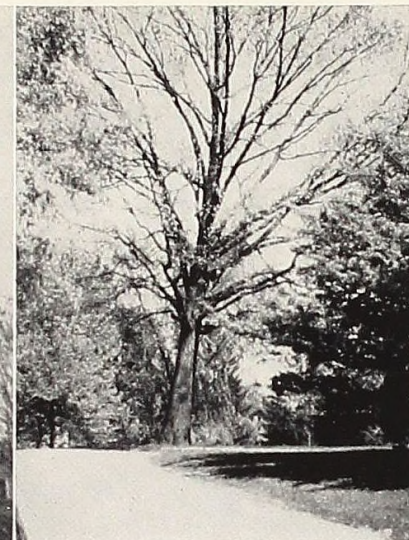
# Lobdell-Emery Mfg. Co.

Alma, Michigan

Manufacturer of

BICYCLE RIMS

BICYCLE SADDLES



## The Varsity Shop

"JUST FOR SPORT"

BOOKS

ATHLETIC GOODS

STUDENT SUPPLIES

TYPEWRITERS

126 W. Superior

Phone 66

Compliments of

CARNEY-WILCOX-MILLER  
HOSPITAL, INC.

ALMA

MICH.

Compliments of

BUICK SALES AND SERVICE

Swarthout-Ewer Sales

ALMA

MICH.

Compliments of

## Rainbow Gardens Roller Rink

Michigan's Finest Summer Rink

CRYSTAL, MICH.

Archery Range

M. S. Lewis, Prop.

## Stovall Studio

We Appreciate  
the Opportunity

of

Serving Alma College  
as Official Photographers



The Grove

**"ESQUIRE"**

Presents advanced trends in men's wear fashions.

This store gives you the opportunity to select the newest fashions for men.

Quality merchandise at popular prices.

The finest name lines of men's wear procurable—

Also men's shoes—

For "Esquire" styles and correct dress — see —

**G. J. Maier**

CLOTHES FOR DAD AND LAD

Compliments to the  
Class of '41

**DOUD DRUG CO.**

ALMA MICH.

If it's a General Electric  
Product, we have it.

**MEDLER ELECTRIC CO.**

H. B. LUETH, Prop.

"Everything in the Electrical Line"

Alma, Mich.

Phone 221

Satisfied Customers

**BURN BLUE BELL COAL**

SOLD BY

**Little Rock Lumber &  
Coal Co.**

where service is a habit

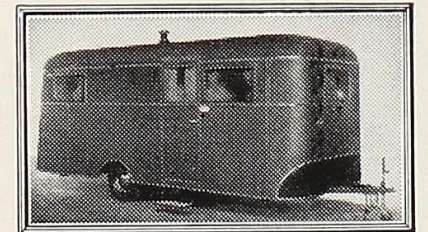
PHONE 246

ALMA

Compliments of

**ALMA RECORD**

PRINTERS



**ALMA TRAILER CO.**

Silver Moon and Cross Country Trailers



# The Corporation

## OFFICERS OF THE BOARD OF TRUSTEES

Samuel H. Forrer ..... Chairman  
Leslie P. Kefgen..... Vice Chairman  
A. G. Studer..... Treasurer  
Kendall P. Brooks..... Secretary

## MEMBERS OF THE BOARD

### CLASS OF 1941

John W. S. Pierson, 111 Ransom Ave., Grand Rapids.  
A. G. Studer, M. D., LL. D., 2020 Witherell St., Detroit.  
Leslie P. Kefgen, Northern Automotive Supply Company, Saginaw.  
Rev. Benjamin J. Bush, D. D., 100 Lawrence Ave., Detroit.  
Alex L. Sayles, Newberry.

### CLASS OF 1942.

Rev. Lewis S. Brooke, D. D., 2512 Helen Avenue, Detroit.  
Mrs. James Henry Lancashire, 952 5th Ave., New York City.  
Rev. Samuel H. Forrer, D. D., Jefferson Avenue Presbyterian Church,  
Detroit.  
Maynard A. Cook, 120 South LaSalle Street, Chicago.  
Col. William Franklin Knox, LL. D., Secretary of the Navy, Washington,  
D. C.  
Chester F. Miller, LL. D., Superintendent of Schools, Saginaw.

### CLASS OF 1943.

Prof. Kendall P. Brooks, 803 South College Avenue, Mt. Pleasant.  
Mrs. William A. Bahlke, 608 State Street, Alma.  
Dean James B. Edmonson, School of Education, University of Michigan,  
Ann Arbor.

Harwood J. Gilbert, 2035 Gratiot Avenue, Saginaw.  
William McFadden, 508 State Street, Alma.  
Charles H. Goggin, 812 State Street, Alma.

### CLASS OF 1944.

Carl W. Bonbright, General Foundries, Flint.  
Charles H. Bennett, Daisy Manufacturing Company, Plymouth.  
Wirt M. Hazen, Three Rivers.  
Jerry Tyler, Niles.

## WOMAN'S ADVISORY COMMITTEE

Mrs. Sadie Soule, Alma..... President  
Mrs. A. R. Moon, Saginaw..... Vice President  
Mrs. Lawrence Montigel, Alma..... Secretary and Treasurer  
Mrs. John W. Dunning..... Alma  
Mrs. William A. Bahlke..... Alma  
Mrs. Roy W. Hamilton..... Alma  
Mrs. Frank Knox..... Washington, D. C.  
Mrs. John E. Ludwick..... Jackson  
Mrs. Kendall P. Brooks..... Mt. Pleasant  
Mrs. Joseph W. Britton..... Midland  
Mrs. Donald J. Porter..... Grand Rapids

# Alumni Association

President..... Adelbert H. Lindley, '11  
Vice President..... F. R. Phillips, '14  
Secretary-Treasurer..... Chester R. Robinson, '17  
Ralph C. Chisholm, '16                      Edith M. Davis, '34

The annual meeting of the Association is held on Alumni Day, which is the day before Commencement.

The Association, formed by the class of '91, is an important and influential college organization. Graduates of the college and kindergarten training departments and all former students of the college are members of the Association.

# "JAHN & OLLIER AGAIN"



This crest of service and quality is the hallmark of America's largest Yearbook designing and photoengraving organization.

## JAHN & OLLIER ENGRAVING CO.

Makers of Fine Printing Plates for Black and Color Artists and Photographers

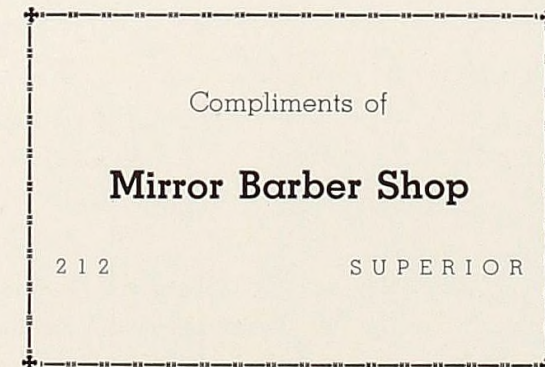
817 W. WASHINGTON BLVD.  
CHICAGO, ILL.

## Officers of Administration

John Wirt Dunning..... President  
Robert W. Clack ..... Registrar  
Kathleen I. Gillard.....Dean of Women  
Administrative Council—

The President (ex officio), the Registrar, the Dean of Women, and Professors Kaufmann, Hamilton and Macdonald.

A. G. Studer ..... Treasurer  
William Ellis..... Business Manager and Assistant Treasurer  
L. Robert Oaks ..... Executive Secretary  
Fina C. Ott..... Librarian  
Charlotte Klein ..... Assistant Librarian  
Mrs. D. W. Robinson..... Library  
Mrs. Ella Love Hutton..... Housemother, Wright Hall  
Euarda McCray Abernethy..... Secretary to the President  
Joseph R. Yeager..... Bookkeeper  
Virginia Tice..... Secretary to the Business Manager  
Donald Peter Smith..... Assistant in Athletics





**Autographs**

**Autographs**

# STUDENT DIRECTORY

Adams, John W. . . . . 404 N. Linn, Bay City  
 Adler, Jean A. . . . . 3817 Kensington, Detroit  
 Adler, Shirley M. 3817 Kensington, Detroit  
 Agorgianitis, Christine  
     15 Beandette, Pontiac  
 Aikin, Carolyn . . . . . R. F. D. No. 2, Sturgis  
 Albright, Jack . . . . . 124 Allen, Alma  
 Allison, Dorothy . . . . . 4305 Buena Vista, Detroit  
 Allman, Warren . . . . . Wyandotte  
 Allured, Donald . . . . . Kinde  
 Angelus, Kean C. . . . . 530 Wright, Alma  
 Arklie, Albert . . . . . 209 Virginia, Sturgis  
 Arnold, Auburna  
     623 Washington, Traverse City  
 Bach, Hannah . . . . . 325 Center, Sebewaing  
 Bahlke, Blanche . . . . . 12789 Manor, Detroit  
 Bajis, Theophil . . . . . 2441 Salina, Detroit  
 Baker, Elmer . . . . . Litchfield  
 Baker, Mary . . . . . 314 Oakland, Pontiac  
 Baklarz, Edward  
     1855 Southfield Rd., Ecorse  
 Baney, Vera . . . . . 638 Wright, Alma  
 Banfield, Ralph . . . . . Box No. 455, Farmington  
 Barnett, Gerald . . . . . 815 Cronk, Saginaw  
 Batsakis, Pete, Jr.  
     439 Webster, Traverse City  
 Beauvais, Philip . . . . . Manistique  
 Beckwith, Jean . . . . . 516 N. Hampton, Bay City  
 Bell, Alfruda  
     421 Woodsboro Dr., Royal Oak  
 Bell, Alice . . . . . 59 Piper Ave., Battle Creek  
 Bell, John . . . . . R. F. D., Alma  
 Bell, Mary Catherine . . . . . R. F. D., Alma  
 Bernthal, August . . . . . 340 South Ninth, Saginaw  
 Blata, Joe . . . . . Chesaning  
 Block, Eleanor . . . . . 714 State St., Alma  
 Bowen, Mary Anne . . . . . 545 N. Main, Clawson  
 Boylan, Walter . . . . . 119 Lincoln, Boyne City  
 Brace, Beulah . . . . . R. F. D. No. 1, Royal Oak  
 Bradford, Edwin B. . . . . R. F. D. No. 2, Alma  
 Britten, Peter . . . . . Riverdale  
 Broughall, Henry . . . . . 121 Carolina, Alma  
 Brown, Florence  
     319 Woodworth, Fergus Falls, Minn.  
 Brown, Steve . . . . . 123 Penrith, Alma  
 Brown, Ralph . . . . . 916 Emerson, Saginaw  
 Brown, Robert . . . . . 916 Emerson, Saginaw  
 Browning, Ruth . . . . . 9230 Wyoming, Detroit  
 Bucholz, Clifford . . . . . Harrison  
 Burke, Robert . . . . . R. F. D. No. 2, Alma  
 Burr, Lawrence . . . . . 216 Cedar, Alma

Callahan, Wilbur . . . . . 508 Ashman, Midland  
 Cappaert, Francis . . . . . Clare  
 Carey, Keith . . . . . Charlevoix  
 Carr, William . . . . . Alpena  
 Carrier, Eileen . . . . . Mason  
 Carter, Ann . . . . . 606 South Third, Marquette  
 Carter, Marion  
     71 Allendale St., Rochester, N. Y.  
 Chambers, Margaret . . . . . 26 Illinois, Battle Creek  
 Chesley, Richard . . . . . 3277 Sturtevant, Detroit  
 Chester, Joseph . . . . . 42 Water, Perry, N. Y.  
 Clack, Llywelyn . . . . . 209 W. Downie, Alma  
 Clark, Benjamin . . . . . 509 Main, East Jordan  
 Clark, Howard . . . . . 703 Maple, Niles  
 Cleland, Betty . . . . . 132 Allen Ave., Alma  
 Closson, Frank . . . . . 3010 Orchard, Alma  
 Cogsdill, Francis . . . . . 16821 Stout, Detroit  
 Coley, Mary Jean  
     1179 Yorkshire, Birmingham  
 Conner, Wilma . . . . . R. F. D. No. 1, Ionia  
 Connolly, Maryhelen . . . . . Newberry  
 Conrad, Margaret  
     33 Benton Hanchett, Saginaw  
 Converse, Don . . . . . 605 Pine, Alma  
 Conzelman, Charles  
     16504 Edinborough, Detroit  
 Cook, Max . . . . . 606 N. Main, Three Rivers  
 Corgan, Paul . . . . . 737 State, Alma  
 Cotter, James . . . . . Pewamo  
 Crandall, Jack . . . . . West Branch  
 Cresswell, Hugh . . . . . St. Louis  
 Crewe, Veda . . . . . 714 N. Genesee, Saginaw  
 Crimmins, William . . . . . Morley  
 Crittenden, Jack . . . . . R. F. D. No. 4, Kalamazoo  
 Croft, Marjorie . . . . . Cass City  
 Crozier, William . . . . . Ithaca  
 Culham, Dorothy . . . . . Milford  
 Cunningham, Dick  
     503 Washington Ave., Alpena  
 Curry, Sally  
     3021 Westwood Parkway, Flint  
 Dahl, Herbert . . . . . 1120 Montana, Gladstone  
 Davies, Arthur . . . . . 226 State, Alma  
 Davis, Carl  
     216 1/2 W. Genesee, Auburn, N. Y.  
 Davis, Stanley . . . . . 414 W. Paterson, Flint  
 Dehnke, Helen . . . . . Harrisville  
 De Hority, George, Jr.  
     907 W. Lovell, Kalamazoo  
 Delavan, Preston . . . . . Elberta  
 Deloge, Alma . . . . . 135 Washington, Alpena

DeNoyelles, Roger . . . . . 1963 Monterey, Detroit  
 Dewar, Robert . . . . . 514 Lake Ave., Traverse City  
 Dewey, Marilyn . . . . . 807 Gratiot, Alma  
 Dickinson, Robert . . . . . Stockbridge  
 Dickinson, Jeanette English  
     2844 Van Alstyne, Wyandotte  
 Dittmar, Harry . . . . . 305 Renshaw, Clawson  
 Draper, Harold . . . . . 128 Stockdale, Flint  
 Dugal, Bette . . . . . 340 W. 7th, Traverse City  
 Dunnette, Phyllis Koepfgen . . . . . Cass City  
 Du Vall, Dorothy . . . . . Lake City  
 Duvendeck, Jerry . . . . . 1228 20th, Portsmouth, O.  
 Duwe, Arthur . . . . . 129 Goetz, Saginaw  
 Edgerton, Andrew . . . . . Clio  
 Elliott, Oliver . . . . . 1105 Kensington, Flint  
 Ellis, Tracy . . . . . 602 Eleanor, Saginaw  
 Emms, James . . . . . 603 Foster, Ludington  
 Eurich, Albert . . . . . 1872 9th, Bay City  
 Evans, Maryellen . . . . . 707 Chapin, Cadillac  
 Eyer, Orlynn . . . . . 230 Prospect, Alma  
 Fee, Bettie . . . . . St. Clair Shores  
 Feighner, Virginia . . . . . 808 Owen, Saginaw  
 Fenner, Marvin . . . . . 831 River, Alma  
 Ferguson, Dorothy . . . . . 501 Cass, Bay City  
 Fink, Deane . . . . . R. F. D. No. 3, Alma  
 Firth, Cy . . . . . 1417 E. South, South Bend, Ind.  
 Fischer, Betty . . . . . 15019 Evanston, Detroit  
 Fishbeck, Richard . . . . . R. F. D. No. 1, Alma  
 Fitch, Tom . . . . . 429 Moccasin, Buchanan  
 Ford, Charlie . . . . . 201 W. Midland, Bay City  
 Fortino, Silvio . . . . . 319 Gratiot Ave., Alma  
 Fox, Victor . . . . . Bolton  
 Francis, Donna Jeanne . . . . . 222 Wylie, Saginaw  
 Frank, Virginia  
     4884 Three Mile Dr., Detroit  
 Freiermuth, Janis . . . . . 208 S. West Ave., Jackson  
 French, Paul . . . . . 705 Eighth St., Three Rivers  
 Friedrich, Louis, Jr.  
     221 N. Friedrich, Rogers City  
 Frier, William . . . . . 1107 Rosedale, Alma  
 Fullerton, Ann . . . . . 1108 Holland, Saginaw  
 Furstenberg, Mary Jo  
     18 Wedgewood Rd., Saginaw  
 Gainey, David . . . . . 418 N. Michigan, Saginaw  
 Galinet, Bill . . . . . 720 Constantine, Three Rivers  
 Gallagher, Danford . . . . . Charlevoix  
 Gibb, Lionel . . . . . 1208 Michigan, Alma  
 Gilchrist, Jack . . . . . 1702 Concord, Flint  
 Gillard, Don . . . . . Spruce  
 Gillard, Ernest . . . . . Spruce  
 Gillert, George . . . . . 2432 Gratiot, Port Huron  
 Goetz, Ernie . . . . . Breckenridge  
 Goldie, Lois . . . . . 1021 Rademacher, Detroit  
 Goodell, Joe . . . . . 2108 Newton, Saginaw

Goodrich, Alan . . . . . Ithaca  
 Goodwyn, Mary . . . . . 323 Wheeler, Saginaw  
 Graham, Guile . . . . . 739 Evergreen, Flint  
 Grimes, Constance . . . . . 3213 Sunset Dr., Flint  
 Guernsey, VeDell . . . . . Perrinton  
 Guider, Paul . . . . . 1699 Atkinson, Detroit  
 Hagenbuch, Warren  
     R. F. D. No. 3, Three Rivers  
 Haley, James . . . . . Ithaca  
 Hamilton, Robert  
     128 W. Alexander, Buchanan  
 Hanzel, Robert . . . . . 638 S. 16th St., Saginaw  
 Harrison, Beryl  
     318 W. Washington St., St. Louis  
 Harrison, Mavis  
     318 W. Washington St., St. Louis  
 Hartt, Fred . . . . . 84 Stout St., Pontiac  
 Hartt, Warren . . . . . 84 Stout St., Pontiac  
 Hass, Marion . . . . . Bad Axe  
 Hastings, Sheldon . . . . . Cass City  
 Hathaway, Kenneth . . . . . R. F. D. No. 2, Holly  
 Hathaway, Marjorie . . . . . 148 Iowa, Alma  
 Hawkins, Lois . . . . . 1826 Oakley, Saginaw  
 Hawkins, William . . . . . 1374 Nottingham, Detroit  
 Hayden, Sutherland  
     2221 N. Fayette, Saginaw  
 Heimforth, Jack . . . . . 430 W. 7th, Traverse City  
 Heitman, Warren . . . . . 606 Lincoln Rd., Detroit  
 Hendrickson, Leona . . . . . 630 State, Alma  
 Hicks, James  
     30325 12 Mile Rd. West, Farmington  
 Hicks, John . . . . . 426 E. 1st St., Monroe  
 Higgins, Robert  
     32 Outlook Pk., Pleasant Ridge  
 Hill, Fred . . . . . St. Louis  
 Hinkle, Douglas . . . . . 701 Woodworth, Alma  
 Hocking, Reginald . . . . . Hemlock  
 Hodgson, Harold . . . . . Beaverton  
 Hoffman, Bradley . . . . . Fenton  
 Holmes, Rex . . . . . 512 Lincoln, Niles  
 Hoogerland, Clarence  
     3258 Townsend, Grand Rapids  
 Hopkins, Beverly . . . . . Decatur  
 Hopkins, Paul . . . . . Riverdale  
 Hopkins, William . . . . . 611 Pine Ave., Alma  
 Horne, Andrew . . . . . 521 Hendrickson, Clawson  
 Howe, Jack . . . . . 321 Lincoln Ave., Alma  
 Howe, Walter . . . . . 627 W. Center, Alma  
 Hubler, Robert . . . . . 502 Sturgis Ave., Sturgis  
 Huff, Jean . . . . . 15429 Biltmore, Detroit  
 Hunter, William . . . . . 6 S. Hunter, Auburn, N. Y.  
 Hurrell, Paul . . . . . Coldwater  
 Jackson, Robert . . . . . 1017 S. Park, Saginaw  
 Johnson, Aymour . . . . . Bancroft  
 Jones, Carroll . . . . . Charlotte

Jones, Robert.....2210 Hanchett, Saginaw  
 Jordan, Constance.6202 Avery Ave., Detroit  
 Jordan, George...6202 Avery Ave., Detroit  
 Juhola, Arvo.....Newberry  
 Kane, Bruce.....Rogers City  
 Kane, Sidney.....84 Maple St., Manistee  
 Katzenmeyer, Bert  
 1517 Shadford Rd., Ann Arbor  
 Kauffman, Jack...511 E. Chicago, Sturgis  
 Kent, Richard.....Pentwater  
 King, Jack...Wuerth Theatre, Ann Arbor  
 Kinney, David.74 Walnut St., Auburn, N. Y.  
 Kirby, Robert.....738 E. Stewart, Flint  
 Kirk, Alvan.....19212 Canterbury, Detroit  
 Kirk, Harry.....5347 Seneca, Detroit  
 Kirkwood, Rama.317 Hilbert St., Kalamazoo  
 Klein, Henry.....124 S. State St., Alma  
 Knighton, Edward.9047 Beverly Ct., Detroit  
 Koffman, Marvin  
 301 N. Van Buren, Bay City  
 Kolvoord, Ruth.....Allegan  
 Koppin, Doris.....14895 Ashton, Detroit  
 Krall, Richard...15379 Lahser Rd., Detroit  
 Krohne, Milford..R. F. D. No. 1, Dowagiac  
 Kuehn, Marjorie  
 R. F. D. No. 4, Dixie Highway, Saginaw  
 Lahaie, Shirley.....Cheboygan  
 LaPaugh, William.....Riverdale  
 Lappin, Gerald.....Caro  
 Lea, Jack.....Fenton  
 Leestma, Clifford.....210 Center, Sturgis  
 Lemon, William.....707 Gratiot, Alma  
 Lincoln, Norma...12209 Roselawn, Detroit  
 Lindley, Alfred  
 859 Barrington, Grosse Pointe  
 Lindley, Bruce  
 859 Barrington, Grosse Pointe  
 Lindsay, Helen.....642 E. Pasadena, Flint  
 Lindsay, Lois.....642 E. Pasadena, Flint  
 Lints, Herbert.....Capac  
 Lites, Robert.....911 Mitchell, Petoskey  
 Loughead, Virginia  
 512 Pinehurst Blvd., Kalamazoo  
 Love, Dorr.....R. F. D., Vermontville  
 Lowry, Wilma.....Midland  
 Luchini, Silena.....115 Walnut St., Alma  
 Lyon, Halvard...530 E. Oliver St., Owosso  
 McCain, Winifred.....159 Webb, Detroit  
 McCall, Jenne-Louise.....Ithaca  
 McClelland, Betty.....Ithaca  
 McClelland, Thomas.....Ithaca  
 McCrum, Wilbur...357 E. Home Ave., Flint  
 McCuaig, Al.....615 Wright Ave., Alma

McCulloch, Betty.....229 E. Baker, Flint  
 McDonald, Robert...11694 Cascade, Detroit  
 McFadden, Stewart...508 State St., Alma  
 McGrain, Thomas...5728 Bedford, Detroit  
 MacGregor, Shirley  
 377 W. Oakridge, Ferndale  
 MacInnes, Forrest.....523 Gratiot, Alma  
 McKeith, Don.....1113 Montrose, Midland  
 McLain, William...1612 Cedar St., Saginaw  
 McLean, Charles.....516 Third, Alpena  
 McLogan, Donald.....1643 Elwood, Flint  
 McMillen, Floyd.....818 Pine, Alma  
 MacNeil, Neil...466 Vinewood, Wyandotte  
 Maclean, Helen...1112 Wall St., Port Huron  
 Malcolm, Barbara  
 318 Main St., Three Rivers  
 Markes, Graham...269 Cedar St., Wyandotte  
 Marsh, William.8581 Mendota Ave., Detroit  
 Marshall, Louise  
 Pemberton Welsh, Ann Arbor  
 Martyn, Estelle Watson  
 142 Colorado, Highland Park  
 Mattison, Donald  
 214 S. Seward, Auburn, N. Y.  
 Mattison, Walter...5051 Ridgewood, Detroit  
 Maxson, Jeanne.....Galesburg  
 Maxwell, Claude...R. F. D. No. 5, Ithaca  
 Mayes, Roland.....521 Linden, Alma  
 Mayville, Elizabeth...7152 Webb, Detroit  
 Medler, Melbourne...318 Park Ave., Alma  
 Mellinger, Bruce...R. F. D. No. 4, Ithaca  
 Merrill, Jean...1651 Taylor Ave., Detroit  
 Meyer, Lenore.....3330 Oakman, Detroit  
 Milham, Robert...604 Woodworth, Alma  
 Miller, David.....Box No. 299, Clawson  
 Miller, Elizabeth.....Mackinaw City  
 Miller, James.....1015 Center, Bay City  
 Miller, Nancy...674 Lovett, Grand Rapids  
 Millhensch, Peyton...17190 Kentfield, Detroit  
 Monteith, Marie...14950 Piedmont, Detroit  
 Moore, Wallace...413 Euclid Ave., Alma  
 Morin, Robert.....St. Ignace  
 Morse, Joseph...1310 Strathcona, Detroit  
 Mutchler, Glenn.....131 Moyer, Alma  
 Navarre, Frank...5304 Mead, Dearborn  
 Newman, Leonard...15380 Fairfield, Detroit  
 Newton, William  
 619 S. Union, Traverse City  
 Niederschmidt, Irma  
 263 Charlevoix, Clawson  
 Nixon, Eugene.....613 Richmond, Alma  
 Ohliger, Louis, Jr...7626 Merrill, Detroit  
 Olney, Stanley.....203 Park, Alma  
 Orluck, George.....Fosters

Owen, Edwin.....Portland  
 Parmelee, Edwin...121 Elwell Ave., Alma  
 Parsons, Randalyn...215 Woodworth, Alma  
 Paterson, Carol.....208 Hastings, Alma  
 Pawlyk, Peter.39 Arlington, Auburn, N. Y.  
 Pears, Albert.....256 Rockingham, Alma  
 Pecsenty, Betty.....9410 W. Fort, Detroit  
 Penner, Edwin...7616 High St., Lansing  
 Perdue, Derril...1301 Ashman, Midland  
 Peshke, Katherine...5336 Seneca, Detroit  
 Peters, Donald...700 N. Johnson, Bay City  
 Peterson, Alice.....Three Rivers  
 Peterson, Dona.....14243 Cruse, Detroit  
 Peterson, George...5330 Seneca, Detroit  
 Peterson, Kenneth...14243 Cruse, Detroit  
 Pettyjohn, Austin.1208 Clinton, Kalamazoo  
 Phillips, Robert...414 W. End St., Alma  
 Phoenix, Ruth.3042 S. Washington, Saginaw  
 Pink, William..R. F. D. No. 1, Farmington  
 Pitcher, Vera.....Sandusky  
 Plaxton, Kenneth...153 College, Battle Creek  
 Potter, Victor.....Ithaca  
 Prescott, William.....Tawas City  
 Press, Donald  
 663 Alexander St., Grand Rapids  
 Prielipp, Pansy.....Harrison  
 Purdy, Tom.....839 W. Superior, Alma  
 Purves, Charles  
 94 Requa St., Rochester, N. Y.  
 Quinn, William.....Clinton, N. Y.  
 Redman, Bette.....620 State St., Alma  
 Reed, Ruth.....904 State St., Alma  
 Reed, Robert.....904 State St., Alma  
 Reed, Sally  
 618½ Sheridan Rd., Evanston, Ill.  
 Reiberg, Virginia.....Bridgeport  
 Riggs, Edwin.75 Owasco St., Auburn, N. Y.  
 Ritchie, Lois.....Harrisville  
 Robertson, Ray.....Hesperia  
 Root, Cathleen.....Plainwell  
 Ruehl, Robert...13924 Prevost, Detroit  
 Russell, Arthur.....641 Union, Ionia  
 Saxton, Gayle.....East Jordan  
 Sercombe, Arthur...2989 Sturtevant, Detroit  
 Shaheen, George...104 Welch Blvd., Flint  
 Sherman, Anna Jean.....East Jordan  
 Sherman, Francis...409 Ann St., Lansing  
 Sieg, Constance.....101 Downie, Alma  
 Simmons, Vinnette  
 189 S. Cherry St., Poughkeepsie, N. Y.  
 Slyfield, Mary Jane...315 Walnut St., Alma  
 Smith, Catharine.....Hammond, N. Y.  
 Smith, Betty Jane  
 Lighthouse Dr., Grosse Ile

Smith, Dane.....South Lyon  
 Smith, Donald.....Charlotte  
 Smith, Robert  
 529 Washington, Traverse City  
 Smith, Stanley.....South Lyon  
 Snyder, Joyce.....Clawson  
 Speerstra, Jeanne...624 Woodworth, Alma  
 Spendlove, Herbert.....Merrill  
 Sterling, Russell.....Greenbush  
 Swope, Donald.....Wheeler  
 Tait, Jack.....Newberry  
 Thomas, Betty.....200 W. John, Bay City  
 Thomson, Kathleen...816 Hoyt, Saginaw  
 Tomes, Mary...20010 Picadilly Rd., Detroit  
 Toth, Steve.....119 N. Monroe, Bay City  
 Trochim, Walter...6379 Georgia, Detroit  
 True, John...1611 N. Michigan, Saginaw  
 Tuck, Georgana...17 Delaware Dr., Pontiac  
 Tullis, Max.....304 E. Henry, Charlotte  
 Volpel, Frieda...R. F. D. No. 2, Sturgis  
 Vorce, Ann.....109 Ferry St., Ludington  
 Wacker, Ann.....Mackinaw Rd., Saginaw  
 Wahlsten, Carl.R. F. D. No. 3, Birmingham  
 Walker, Rocky...904 Buffalo St., Lansing  
 Walton, Dorothy...217 Oneida, Pontiac  
 Warner, Paul  
 202 W. Michigan, Three Rivers  
 Waters, Duane.....Cedar St., Manistique  
 Weavers, Katherine...King Road, Saginaw  
 Webb, Wilfred.....Wheeler  
 Welgoss, Theodore  
 6 Chase St., Auburn, N. Y.  
 Wenger, Shirley...223 Storch St., Saginaw  
 Wert, Muriel...16881 Shaftsbury, Detroit  
 Wickman, Carl...819 Woodworth, Alma  
 Wilkie, Catherine  
 318 Maple, Sault Ste. Marie  
 Wille, Warren...202 Marquette, Durand  
 Williams, Mary Lou.727 Wright Ave., Alma  
 Willits, Maurice.....Caro  
 Wilson, Albert...530 John-M, Clawson  
 Wilson, Dugald...1006 Emily, Saginaw  
 Wilson, Jean...14 Cherry St., Auburn, N. Y.  
 Wilson, Lynn.....Owosso  
 Wilson, Margaret  
 22826 Alexandrine, Dearborn  
 Wooley, Woodrow  
 R. F. D. No. 1, Sarnia, Ont., Canada  
 Worsham, James  
 8067 Morrow Circle, Detroit  
 Wuerfel, Cameron  
 630 S. Lincoln, Three Rivers  
 Wynkoop, Ralph.....Traverse City  
 Ziem, Ed.....432 Oakland, Pontiac

# The Editor's Notebook

BEING chosen editor-in-Chief of The SCOTSMAN for a second try was not an honor. It was an opportunity! The honor, rather, depends on how well the job was done and whether the new book shows improvement over last year.

Hoping to achieve this, I have tried to incorporate into this year's book the features which the majority of the students indicated on their questionnaires. It is for this reason that I have tried to make the book as informal as possible without sacrificing the final degree of dignity which belongs to a college publication. It is also for this reason that I have laid stress on pictures, believing in the old Chinese proverb that "one picture is worth ten thousand words."

Publication of the book depended upon many factors for which I would here like to give special acknowledgment:

Engraving, Jahn and Ollier Engraving Company and especially *Don Fenstermaker* and *Al Gage* for their outstanding co-operation and guidance; photography, *Miss Maurine Stovall* and her keen staff; covers, David J. Molloy Plant of S. K. Smith Company for whom *Andrew Ray* was a fine representative; printing and binding, Ihling Bros. Everard Company and *Ward Goodrich*, the man at the switch; art work, *Robert Jackson* for the outstanding title page design and *Miss Katherine Ardis* for her aid; snapshots, *VeDell Guernsey* and *Jerry Duvendeck*; the student body, faculty, administration and advertisers for making the book possible; *Wilfred Webb*, a conscientious and hard-working business manager; and *Miss Betty Pecsénye*, a top-notch all-around assistant.



IHLING BROS. EVERARD CO., PRINTERS, KALAMAZOO

ALMA COLLEGE LIBRARY



3 3190 00416 6252



MADE  
IN  
CHICAGO