

**SCOTSMAN**

■ 1945 ■

Alma College  
Library



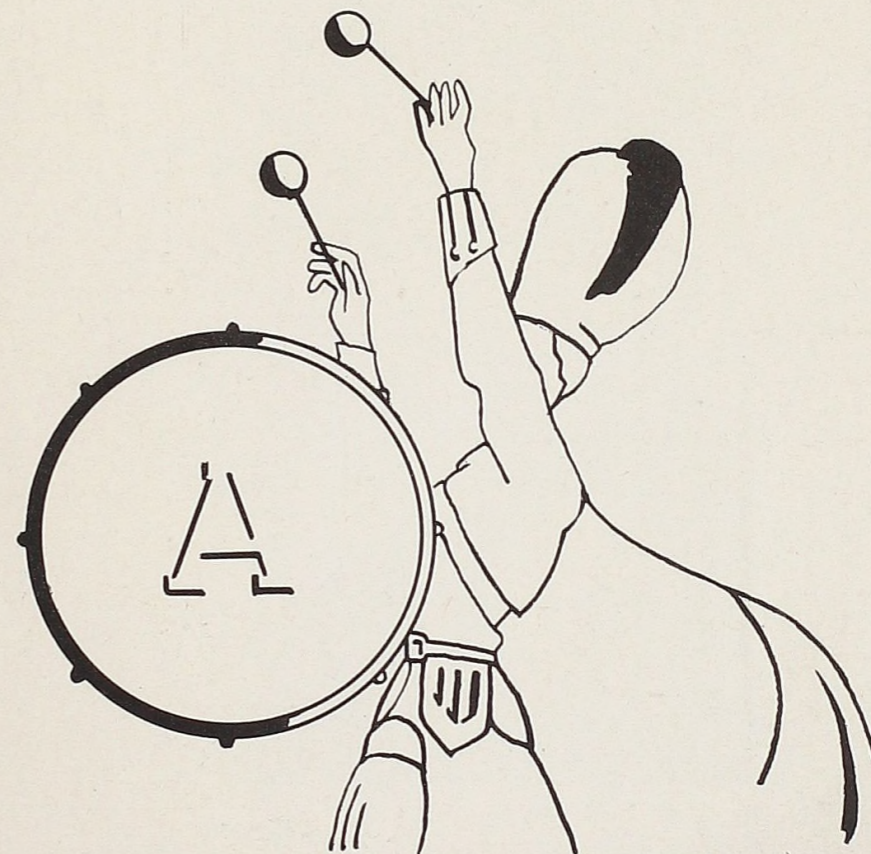
Ref.  
LD  
131  
.A612  
1945  
cop. 2.

52679





"LOYAL HEARTS WILL CHERISH EVER . . ."

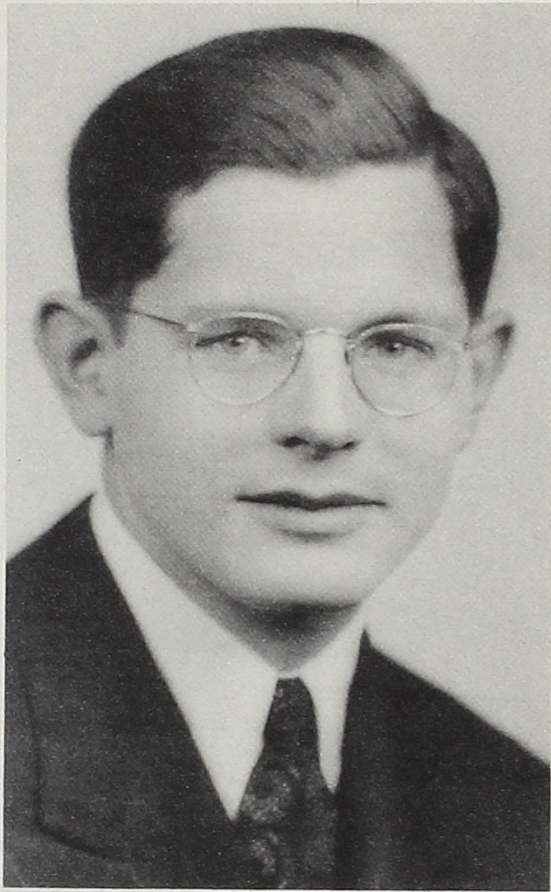


# 1945 SCOTSMAN



PUBLISHED BY  
STUDENTS OF  
ALMA COLLEGE  
ALMA, MICHIGAN

IN MEMORIAM



HANS RICHTER

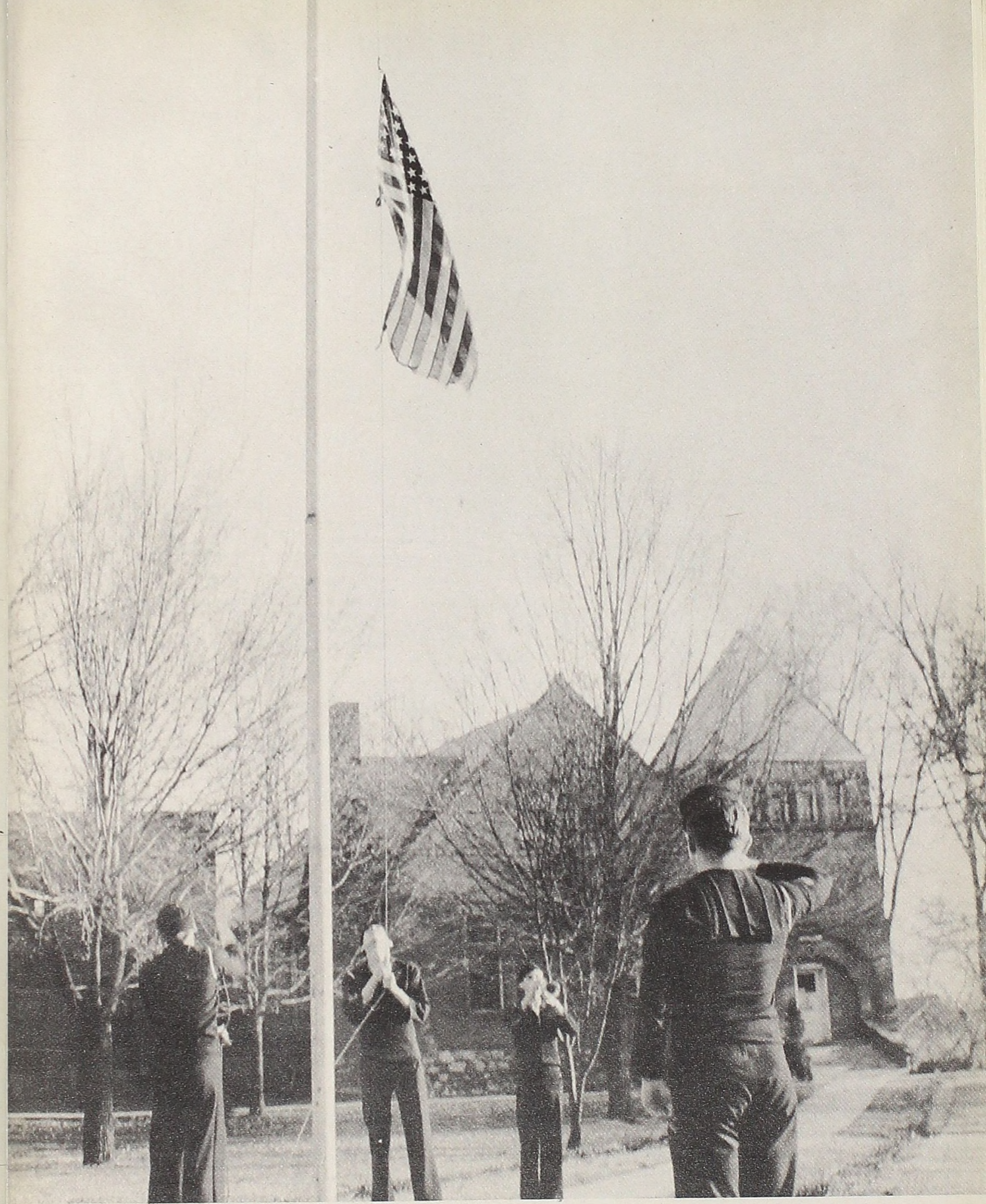
One of our most popular and brilliant instructors, lost to us on January 28 of this year, is sincerely mourned by the college community. Students and friends will always remember his zeal for scholarship, his participation in social activities, his chapel committee service, and assembly-talks on Greek tragedy. He was reticent on his family history and childhood in Germany, but was eager for intellectual discussion.

His Old World mixture of reserved pride and effusive politeness won him prompt attention. Deeper in his nature lay a passion for perfection, a religion of devotion to the true, the beautiful, and the good, exemplified for him in philosophy, in music, and in the personal example, from Christian and Roman history, of Jesus and Marcus Aurelius. He desired to guide his life by their ideals.

Educated in religion and ethics, he was even more interested in the study and teaching of general philosophy and mathematical logic, in which he hoped to work towards a doctorate at Harvard University—until physical conditions finally rendered this hope impossible of realization.

As a popular teacher, a kindly companion in walks and gatherings, and a conversationalist able to meet others on their own ground, he has left an unforgettable and cherished impression in the minds of all who were privileged to know him.

Ref.  
LD  
131  
AG12  
1945  
Cop. 2



DEDICATED TO ALL MEN AND WOMEN OF ALMA IN  
SERVICE



President ROY W. HAMILTON

This Foreword offers the President of Alma College the opportunity to summarize briefly the activities of the past year and to present a preview of what may be in the college year which is before us. To a war-torn world crying out for leadership, the Christian College offers, as its solution to the problem, a group of trained men and women who have faith in God and who desire to serve humanity.

Alma College is completing its second year with a Navy V-12 unit on the campus. With a three-term schedule in operation and with vacation periods drastically curtailed, there has been little leisure for faculty or students. Yet the campus morale has been excellent and each member of the college family has made a marked contribution to the life of the group. The naval officers have been both efficient and cooperative; faculty members, with heavy teaching schedules, have spent themselves freely in extra-curricular activities, and the students, navy and civilian, have promoted social and religious programs that have been a credit to the sponsors.

Under the stimulus of the Dean of Women and the Social Director, a social program has evolved that has its beginning in personal counseling and its end in the better adjustment of the student to his campus world. The religious life of our men and women has found expression in the Christian Fellowship Group which offers opportunity through weekly gatherings for frank discussion of social and religious problems.

During the year, several faculty members left the campus for service in the Armed Forces or for research connected with the Army. In each case excellent replacements were secured and the high quality of teaching in Alma College has been adequately maintained.

When the V-12 program is discontinued throughout the country on July 1, 1945, Alma will return to the usual two semester college year. Our girls will look forward to a homecoming in Wright Hall, and the sacred precincts of Pioneer will once more echo to the dulcet tones of the campus male. Plans are on foot to transform the President's House into an art center to care for the needs of music and art. If our youthful department of Home Economics fulfills its promise of growth, Clizbe House would be the logical place for this expanding department. If our general offices are brought together, using the space now available in the old chapel, with a book store and snack bar adjacent, the student in Service, returning to the campus, may fail to recognize the first floor plan of the familiar "Ad" building.

The Planning Commission of the Alma College Board of Trustees has prepared a plan which proposes to make the College a Christian Service Center for the Presbyterian Church of Michigan. Since Alma is strategically located in the geographical center of the lower peninsula, our institution can serve every need of the Presbyterian Church, of which she is the educational arm. A program covering the recruiting of youth for Christian service, courses in religion and religious education, summer conferences for ministers and laymen, visitation work by faculty members and ministers, offers but a foretaste of what can be done by a Christian college geared to the needs of a vital and energized church.

"To promote knowledge and to increase true religion" was the compelling purpose that inspired our founding fathers as they established Alma College. This motive remains fundamental today. Sound learning and Christian nurture go hand in hand in the training of young men and women, and Alma College proposes to build for the future on these firm foundations.

ROY W. HAMILTON



Lt. Orville Dahl, Executive Officer; Lt. J. E. Scott, Commanding Officer; Comdr. K. S. McIntyre, Medical Officer. Robert Wilson, Sp(A) 1c; Robert Feeser, PhM 2c; Roy Burkhardt, CSp(A); Raymond Cieloha, Y 2c; Edward Spier, SK 1c.

## SHIP'S COMPANY

### Commanding Officers' Message:

The officers and members of the Ship's Company of the Navy V-12 Unit at Alma College extend greetings to the members of the Faculty and Student Body on the occasion of the publication of the SCOTSMAN, the college annual. We are happy that this tour of duty brought us to the campus of this friendly little college. Truly Alma College has made a significant contribution to the War Effort in making its facilities available to the Navy during the V-12 Training Program.

JULIUS E. SCOTT,  
Commanding Officer.



Mrs. H. O. Abernethy



Mr. Earl Peterson



Virginia Tice



Joyce Garberson

## ADMINISTRATION

In the many duties connected with the president's office, Dr. Hamilton has had the assistance of his able secretary Mrs. H. O. Abernethy. Through this office have come the plans for student enlistment, personnel relationships, post-war growth of the college, and cooperation with the navy groups which have been on our campus.

The business office has had an unusually busy year with navy contracts to be worked out as well as the regular record keeping, supervision of building maintenance, and the regulation of student labor. The control of all business pertaining to the college was under the supervision of Mr. E. E. Peterson, Business Manager and Assistant Treasurer of the college. Miss Virginia Tice has had charge of record keeping with Miss Joyce Garberson assisting as cashier. Several students have helped in the President's office and business office during the year, including Bertille Tobin, June Slyfield, Nettie Wilson, Helen Stuart, Lois Church and Marjorie McCarty.

The Alumni office has had a very successful year under Mrs. Irene Harwood who has had the supervision of Alumni relations and student enlistment. The Alumni council has been active this year with special emphasis on organization of area alumni groups and assistance with the student enlistment program. Mr. Steven Nisbet, Superintendent of Schools at Fremont, Michigan, has been president of the council, and Stanley Vliet of Alma, has acted as secretary.

Close contact with Alumni has been maintained by use of the Alumni Bulletin and personal contacts. Miss Jane Grills of the Speech Department has assisted with the public relations program of the College.



DEAN IRENE HARWOOD

"This above all, to thine own self be true, and it must follow as the night the day, thou canst not then be false to any man."—Shakespeare's Hamlet.

We are proud here at Alma of many things—the loveliness of the campus, the high standard of our scholarship, the warm friendliness of our students and faculty, the beauty of our campus traditions, the affectionate loyalty of our alumni, and most of all, the inspiration of our high ideals. We gain here, not only a liberal education, but a Christian way of life.

## WOMEN'S SENATE

- Betty Richter
- Barbara Kemper
- Nancy Wauchek
- Marge Wunderlich
- Betty Ellis
- Jane Patton
- Margaret Watson
- Virginia Kocher
- Gerry Wadley
- Nettie Wilson



## FACULTY



James E. Mitchell,  
Professor of  
History  
A.B. Alma College;  
A.M. Columbia  
University  
L.L.D. Alma College,  
Cambridge University,  
Oxford University,  
University of London.



Florence Steward,  
Professor of  
Sociology  
A.B. Cincinnati  
University,  
A.M. Radcliffe College,  
Miami University;  
Graduate study,  
Cincinnati University,  
Columbia University,  
University of Chicago,  
New York School of  
Political and Social  
Science.



Rev. Clyde Vance,  
Instructor of  
Religion  
A.B. Harvard  
University;  
B.D. McCormick  
Theological Seminary,  
Graduate study,  
University of Paris,  
New College,  
University of  
Edinburgh.



Silas O. Rorem,  
Professor of  
Education  
A.B. Morningside  
College,  
A.M. University of  
Chicago,  
Ph.D. New York  
University.



Raymond Ditto,  
John F. Dodge  
Professor of  
Physics  
B.S. Denison  
University,  
A.M. Princeton  
University,  
Ohio State University,  
Chicago University.



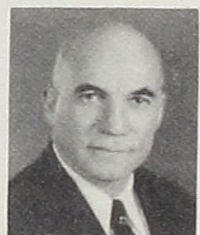
Sam S. Moffett,  
Ph.D., Professor  
of Chemistry



Beulah Rae Lund,  
Instructor in Piano,  
Organ and  
Theory  
B.M. Illinois Wesleyan  
University,  
M.M. Chicago  
Conservatory.



Lyder L. Unstad,  
Professor of  
Economics  
A.B. Concordia  
College,  
A.M. University of  
Minnesota,  
Akademisk Borgerbrev,  
University of Oslo,  
Norway,  
Ph.D. Ohio State  
University,  
University of Wisconsin.



Robert W. Clack,  
Ammi W. Wright  
Professor of  
Mathematics and  
Astronomy  
A.B. Grinnell College,  
A.M. Grinnell College,  
University of Chicago,  
North China Language  
School (Peking),  
Union Theological  
Seminary (Peking),  
University of Michigan.



Mrs. Julia Roecker,  
Instructor in Fine  
Arts  
Graduate of Art  
School,  
Chicago Art Institute,  
Herron Art Institute,  
Indianapolis,  
New York University,  
Landscape Painting at  
Provincetown, Mass.  
under Charles  
Hawthorne.



Willis A. Egger,  
Nathan B. Brad-  
ley Professor of  
Biology  
A.B. Northland  
College,  
M.S. and Ph.D. Uni-  
versity of Minnesota.



Charlotte Klein,  
Librarian



Clifford B. Young,  
Instructor in Me-  
chanical Drawing  
B.S. Ohio State  
University.



Jane E. Grills,  
Instructor in  
Speech  
A.B. University of  
Michigan,  
A.M. University of  
Michigan.

## FACULTY



Floyd E. Lear,  
Director of  
Athletics  
A.B. Western State  
Teacher's College.



Margaret E. Foley,  
Professor of  
French and  
German  
A.B. Ohio Wesleyan  
University,  
A.M. University of  
Illinois,  
Graduate study,  
University of Illinois,  
Columbia University,  
L'Institut de  
Phonetique, Paris.



Eugene F. Grove,  
Instructor in Vocal  
Music  
B.M., M.M. Illinois  
Wesleyan University,  
Private study with  
Thomas N. MacBurney,  
Chicago.



Alward E. Brown,  
Assistant Professor  
of Physics  
A.B. Albion College,  
B.S.E. University of  
Michigan,  
A.M., Ph.D. Harvard  
University,  
University of Maine,  
University of Chicago.



D. W. Robinson,  
Library.



Mrs. Kenneth  
Gaumer, Instructor  
in Physical Educa-  
tion for Women  
A.B. Michigan State  
Normal College.



Wendel Cole, In-  
structor in English  
and Speech, Di-  
rector of Drama.



Molly Parrish,  
Assistant Professor  
of German and  
Spanish and  
Registrar.  
A.B. Alma College,  
A.M. University of  
Michigan,  
University of Mexico.



Herman W. Soen-  
ker, Professor of  
Rhetoric and  
Journalism.  
A.B. Westminster  
College,  
A.M. Westminster  
College,  
Pittsburgh  
Theological Seminary,  
Graduate study, Johns  
Hopkins University.



Henry W. Howe,  
Ammi Wright Pro-  
fessor of History  
and Political  
Science.  
A.B. Western State  
Teacher's College,  
A.M. University of  
Michigan.



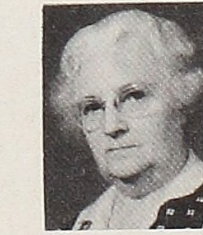
Raymond G. Swi-  
gart, Assistant  
Professor of  
Mathematics.  
B.S. Alma College,  
M.S. Alma College,  
A.M. University of  
Michigan.



Lawrence Phillips,  
Instructor in  
Chemistry.  
B.S. Alma College,  
Ph.D. Indiana  
University.

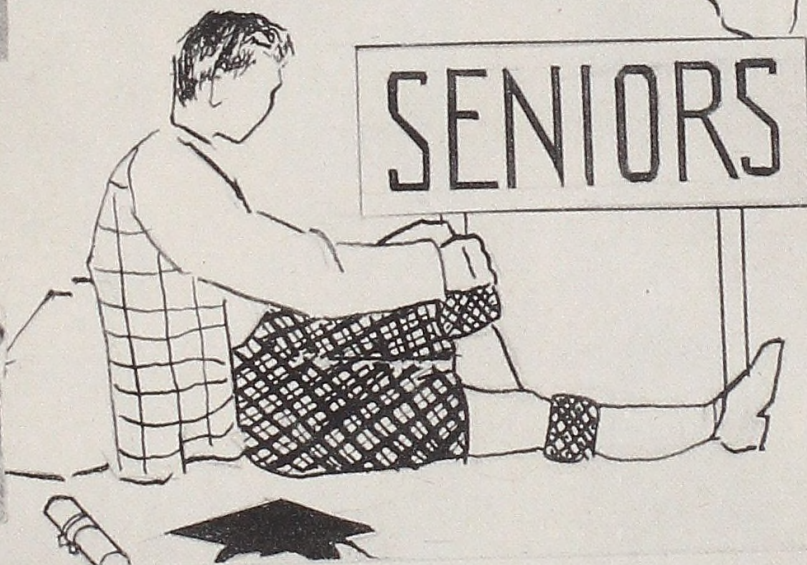
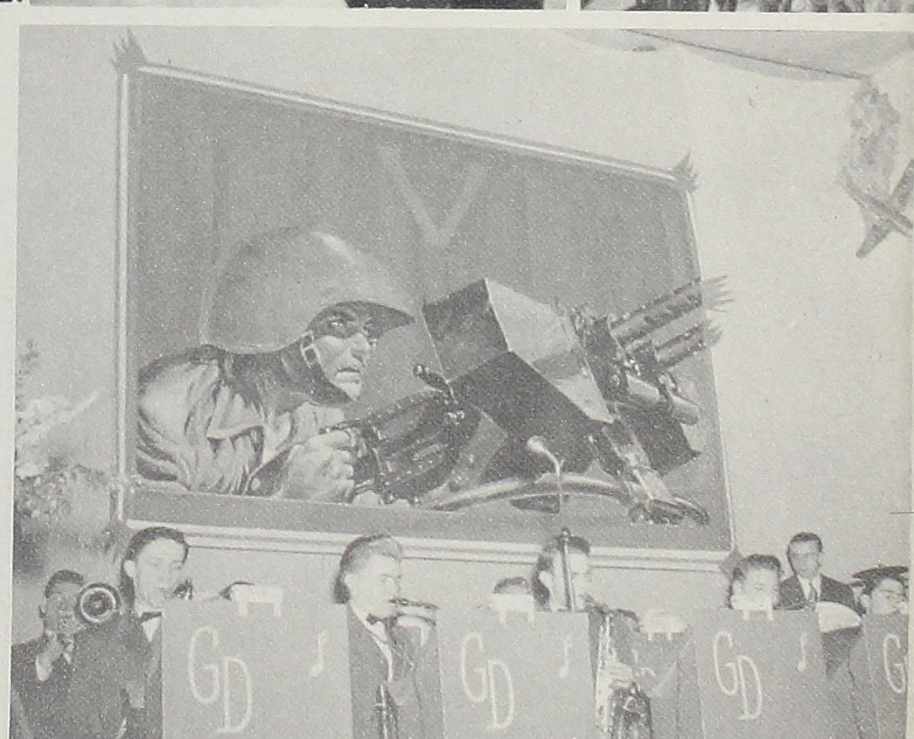
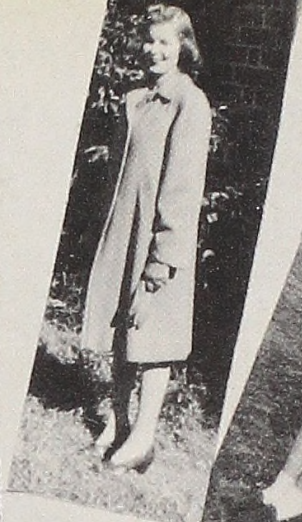
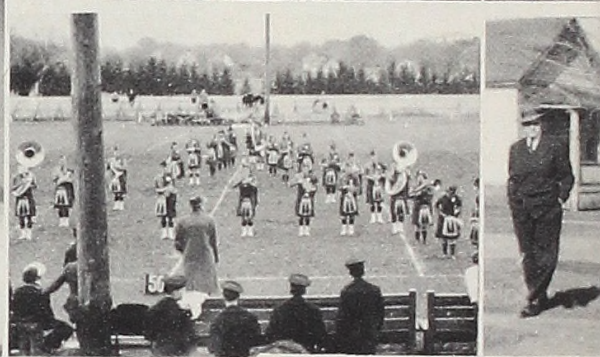
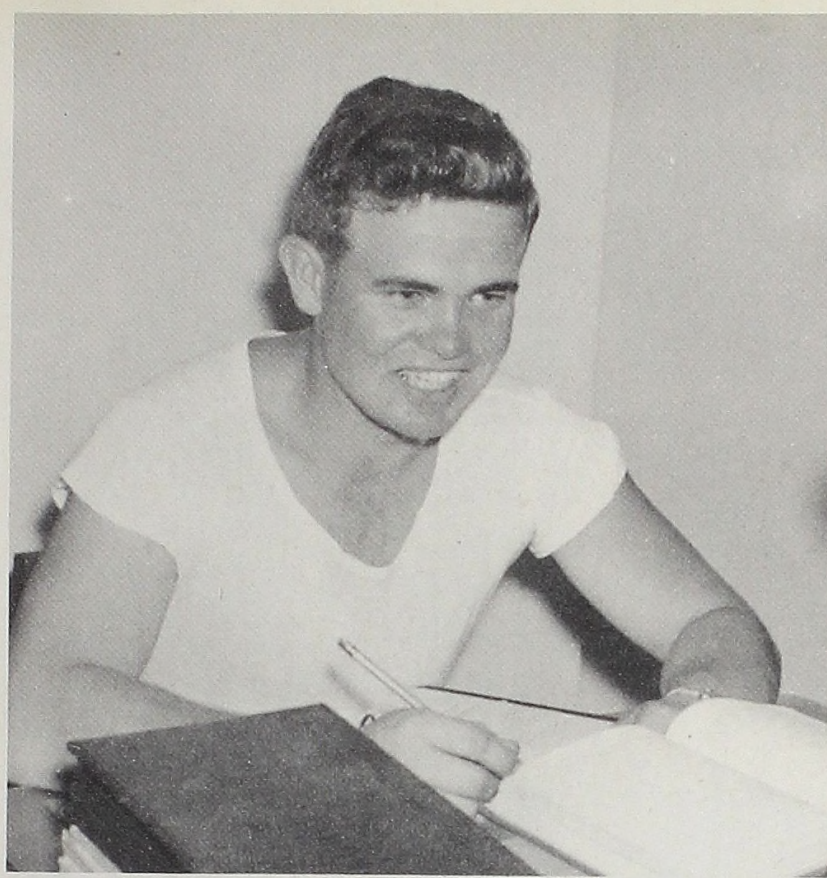


Mrs. Thomas Kain,  
Housemother,  
Delta House



Mrs. Ella L. Hut-  
ton, Housemother,  
Pioneer Hall.





# SENIORS



Baltz, Maryhelen  
Alpha Theta



Bow, Marjory  
Alpha Theta, pres. 4  
A Cappella Choir



Brieden, Walter  
Bernard  
Delta Gamma Tau, pres. 4  
Student Council, pres. 4  
Who's Who in Am.  
Univ. and Colleges



Glenn, Lois Elaine  
A Cappella Choir



Hass, Norma  
Alpha Theta



Johnson, Phyllis  
Kappa Iota



Jones, Margaret  
Student Council  
Tau Kappa Alpha  
Who's Who in Am.  
Univ. and Colleges



Jones, Marian  
Sigma Philo, pres. 4a  
Debate and Oratory



Kreulen, Ruthe  
Alpha Theta, pres. 4  
A Cappella, Chapel  
Organist, Bond Queen,  
Student Council



Mason, Margaret  
Sigma Philo, pres. 4b  
Univ. of Mich.,  
Scholarship alternate



Peterson, Carol A.  
Alpha Theta  
W.A.A. Exec. Council



Richter, Emma A.  
Sigma Philo Speech,  
radio, dramatics  
Univ. of Mich.,  
scholarship



Towne, James  
Delta Gamma Tau



Traphagan,  
Edwina  
Sigma Philo  
Student Council,  
Inter-Sorority Council



Wadley,  
Geraldine  
Alpha Theta  
Student Council,  
Women's Senate



Wauchek, Nancy  
Kappa Iota, pres. 4b  
Women's Senate,  
pres. 4



Allured, Don  
Delta Gamma Tau  
Chapel Organist



Welgoss, Betty  
Alpha Theta



Williams, Patt  
Kappa Iota, pres. 4a  
Senate, soc. pres. 4

NOT PICTURED

Baney, Alice  
Sigma Philo



Ruth Edwards



Kathryn Fischer



Mary Milham



Jane Patton



Marge Wunderlich



Nettie Wilson



JUNIOR

NOT PICTURED—Eleanor Brow, Roger Everest, Amy Middleton, Lawrence Rowe.



Ardella Allen



Ellen Angell



Roger Barrette



Ruth Burket



Ben Clark



Betty Ellis



Louis Foster



Aritha Hammond



Barbara Kemper



Marjorie McCarty



Robert Nixon



Glenn Sempstrott



June Slyfield



Margaret Watson



Elizabeth Whiting



Jean Winship



Betty Richter



Ruth Shaw



Barbara Lull



# SOPHOMORES

FRESHMEN



Patricia Adams  
Orthella Anderson  
Patricia Atkins  
Wanda Bigler  
Barbara Bunting



Ralph Burroughs  
Joyce Copeland  
Janet Cordes  
Elaine Edwards  
Agnes Feagler



Yvonne Feeser  
June Fuller  
Nancy Harden  
Betty Hartley  
Helen Hawkins



Helen Isaac  
Virginia Kocher  
Joan Lott  
Joyce McKinley  
Marian Mattson



Marilyn Mundell  
Vera Parsons  
Earl Peterson  
Niomi Place  
Elizabeth Pratt



Jean Rosendale  
Garry Rosenthal  
Jackie Sevier  
Jean Slaski  
Betty Smith



Phyllis Smith  
Ellen Stuart  
Helen Stuart  
Tillie Tobin  
Jean Truman



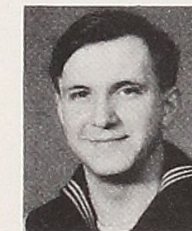
Berdella Welsford  
Ralph Wolbers  
Joan Brett

NOT PICTURED:

Althea Dewey  
Helen Fitzpatrick  
Betty Fortino  
Florence Lufton  
Frances Webster



John Batterton



Joseph Bastyr



James Burnett



Paul Chapman



George Flanigan



Dale Hathaway



Will Kyselka



Ottis Mogege



James Mulvihill



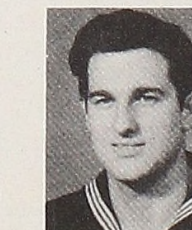
Edward O'Leary



Charles Pecor



Sheldon Stowell



John Thompson

## NAVY V-12 PROGRAM

The Navy V-12 Program has been set up to provide a continuing supply of officer candidates in the various special fields required by the United States Navy and the United States Marine Corps. It is a part of the general plan announced on December 12, 1942 in the "Joint Statement of the Secretary of War and the Secretary of the Navy on Utilization of College Facilities in Special Training for the Army and Navy."

Under the Navy V-12 Program, college-level instruction is given to selected high school graduates, or others of satisfactory educational qualification, whose mental, physical, and potential officer-like qualifications are established by appropriate examinations. As specified in the joint statement, ". . . The educational training will be carried on while the men are on active duty, in uniform, receiving pay, and under general military discipline."

Selected colleges and universities were invited to enter into contracts with the Navy to furnish instruction, housing, messing facilities and medical service. Selection of particular colleges and universities for the Navy V-12 Program was initially made by the Joint Committee for the selection of Non-Federal Educational Institutions, but no contracts were actually awarded until an institution had been approved by the Navy.

The Navy V-12 Program calls for three 16-week terms each year. Colleges are allowed considerable freedom in the selection of instructional aids and in the methods of instruction; they may at their own discretion give or withhold regular academic credit for courses successfully passed, but must offer instruction to any man assigned to the program by the Navy.

In a speech delivered at the conference on the Navy V-12 Program at Columbia University May 14, 1943, Rear Admiral Randall Jacobs, Chief of Naval Personnel, set forth the basic philosophy of the program as follows:

"This is a college program. Its primary purpose is to give prospective naval officers the benefits of college education in those areas most needed by the Navy. We desire, insofar as possible, to preserve the normal pattern of college life. We hope that the colleges will give regular academic credit for all or most of the Navy courses, and we desire that college faculties enforce all necessary regulations to keep academic standards high.

". . . We desire our students to have the benefits of faculty counseling, or extracurricular activities; in short, the best undergraduate education the college can offer."

On July 1, 1943 Alma College, together with approximately 240 other colleges and universities, medical and dental schools, began the Navy V-12 Program. During the two years of operation at Alma College 525 trainees reported to this Unit, while some 300 trainees have completed their work and have been transferred to other, more specialized, activities for further training.

At Alma College Navy V-12 Trainees have participated in intercollegiate sports, forensic contests, held membership in the Alma College A Cappella Choir, served as members of the staff of the "Almanian" and have assisted with the organization and publication of the "Scotsman."

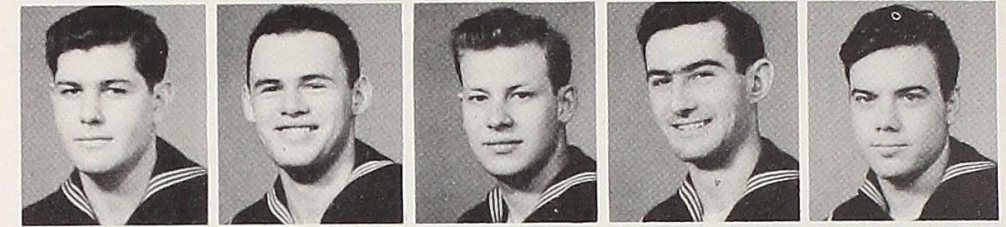
In the training of naval forces, therefore, American colleges, universities, medical and engineering schools and theological seminaries joined hands with the U. S. Navy in the successful effort to select young men thoroughly qualified as potential officers and proceeded to educate and train them so that special abilities could be more effectively used in the service of our country.

—By Lt. Orville Dahl.

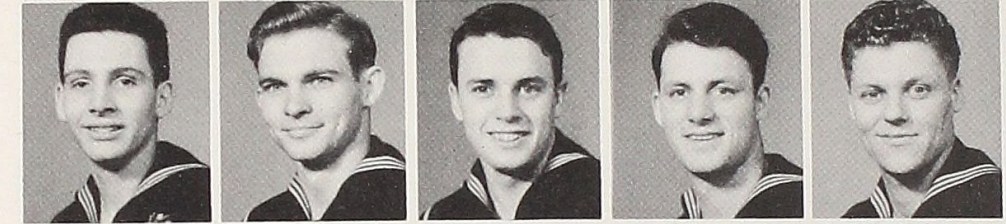
Eugene Adams  
Fred Allen  
Harry Anderson  
Robert Anderson  
William Ashpole



John Avant  
Charles Baker  
William Baltes  
Leslie Barkimer  
Robert Bartusch



Fred Bear  
Dorcey Beard  
A. E. Bertelsen  
Laverne Berry  
Oren Berto



Irving Bookatz  
William Bowen  
Neal Brazee  
Stanley Brink  
Robert Bullock



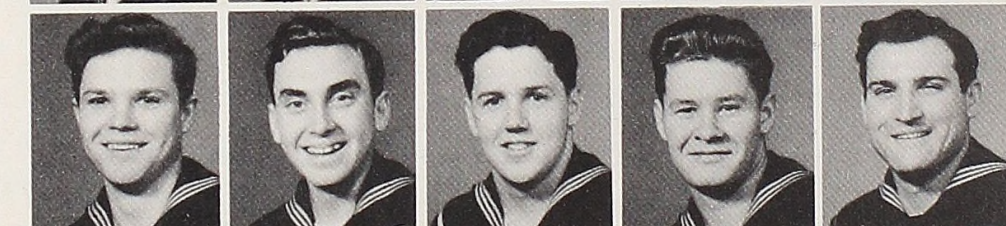
Bruce Burgoyne  
George Burkman  
Richard Burkman  
Don Cairns  
Clarence Carter



John Carty  
Don Catterson  
Don Clark  
Lee Clark  
Bill Clements

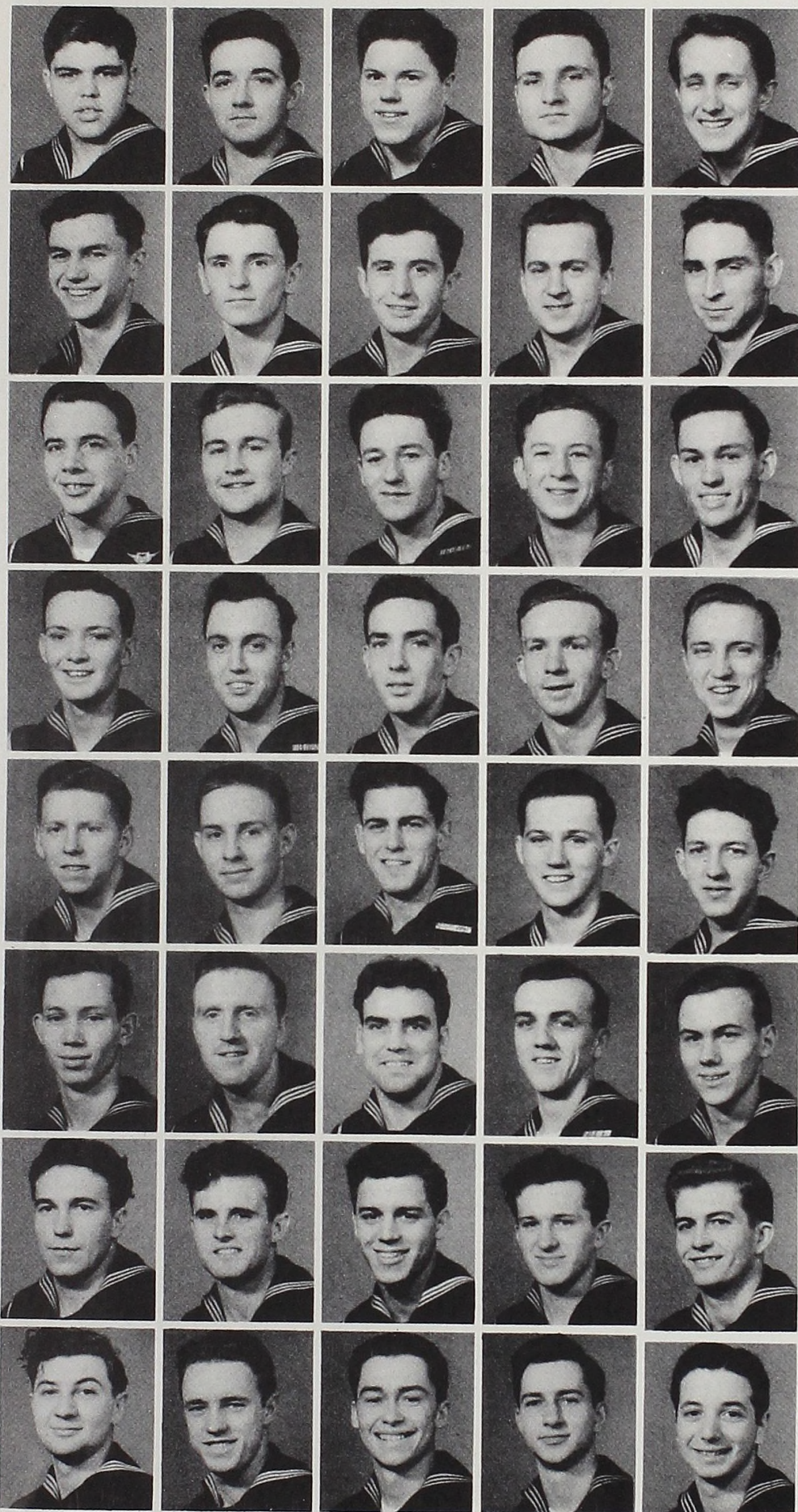


Robert Collins  
Arthur Carston  
Gerald Coughlin  
Philip Daab  
Russel DeClarke



Enrico DeVirgilo  
James Doerr  
Harold Draper  
George Duquesnel  
Edward Dusek





Edwin Eakin  
Hugh Eastman  
Ronald Eber  
Philip Elliot  
William Ellis

William Ellsworth  
Fred Farley  
William Febel  
Thomas Fenzel  
Stewart Flaschen

Ralph Frazier  
Clayton Friis  
James Gibson  
Berl Gier  
John Giere

William Gorham  
William Gray  
Guy Greene  
George Greenquist  
John Gudelman

James Haffenden  
John Hamel  
Ian Hamilton  
John Hanrahan  
Robert Harvey

Tracy Hastings  
Matthew Heeney  
S. E. Hempel  
Harry Hendershot  
Thomas Hight

Earle Hopkins  
H. B. Hogue  
Richard Hower  
J. L. Hudson  
James Irwin

David Jacobs  
Albert Jacques  
Gilbert Jillson  
Mark Johnson  
Henry Kahn

Paul Karl  
T. G. Kanvik  
Jack Kiehl  
Garth Kikendall  
Joseph Koesterer

Charles Kostan  
Robert Larson  
George Lautner  
William Lewallen  
Frank Lombard

Charles Loomis  
Robert Lucas  
E. W. Majewski  
John Manis  
Carl Manoogian

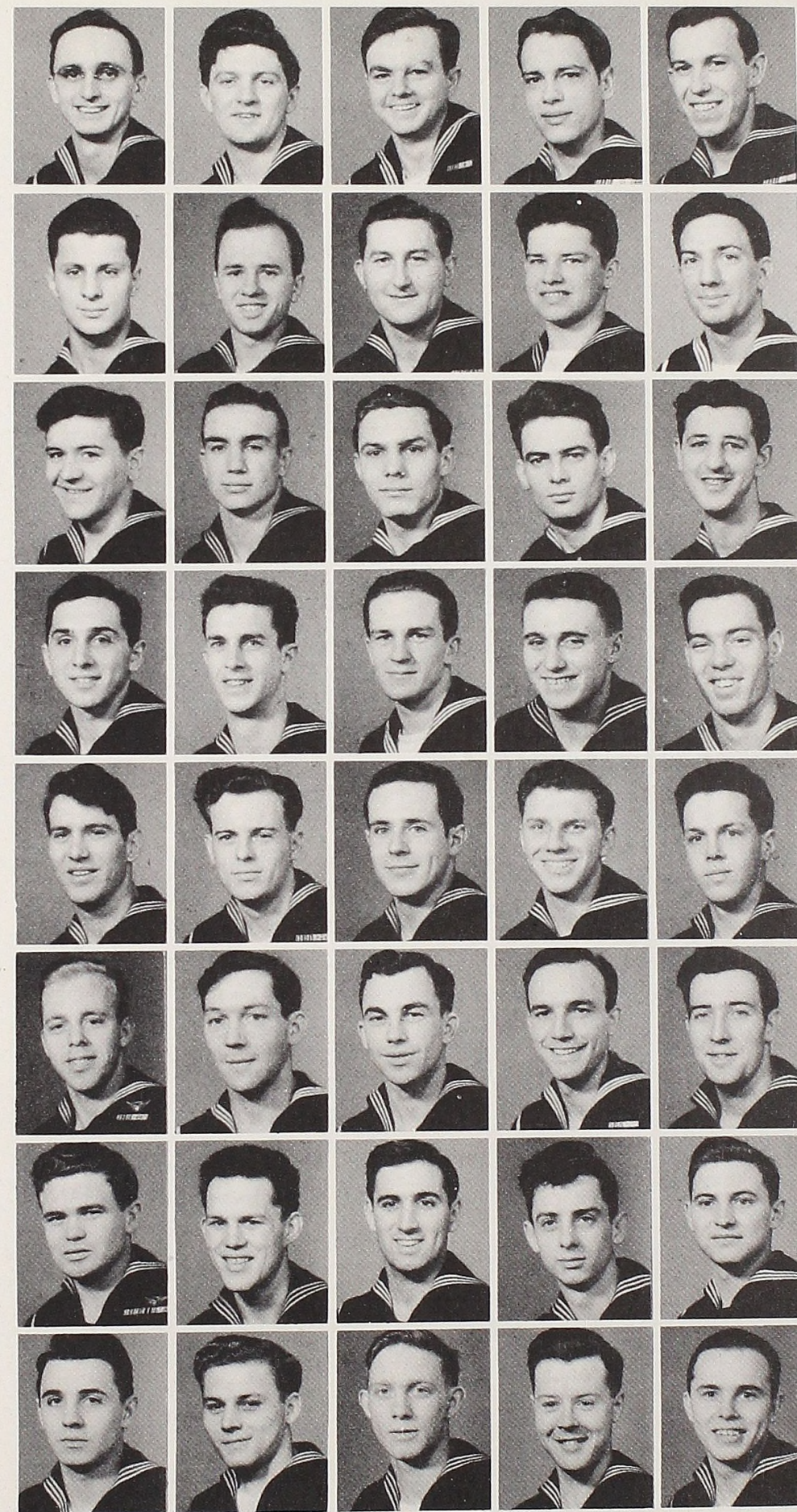
Floyd Marks  
Richard Martin  
Donald Matheson  
Robert Matters  
Eugene Mauch

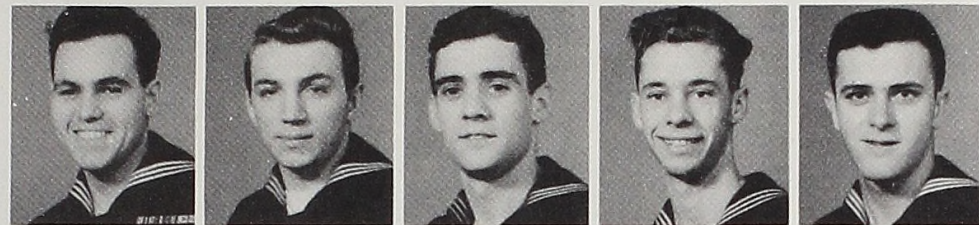
Lawrence McAuliffe  
George McMahon  
Henry Meyer  
Bert Miller  
Herbert Mills

Calvin Molyneux  
J. F. Mulloy  
Alfred Neelands  
Harrison O'Brien  
Eugene Paleno

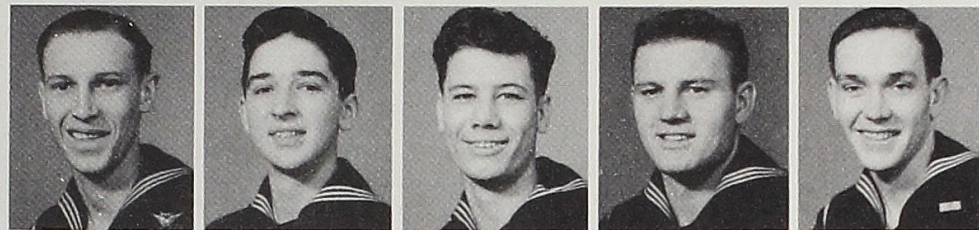
Walter Palmer  
John Park  
Roland Payette  
George Penwright  
Lester Peterson

Harold Plauman  
Erwin Porath  
Ralph Reinker  
Robert Ricker  
Robert Rock

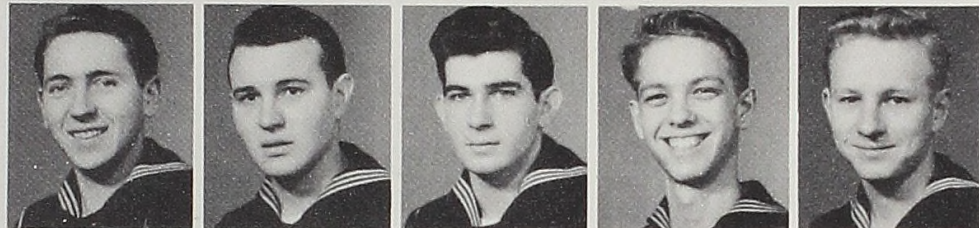




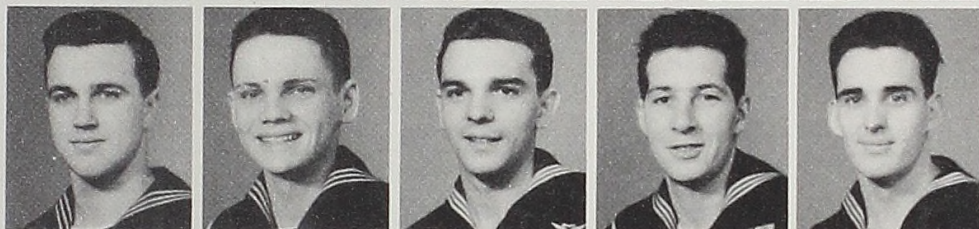
Thomas Rohrer  
Edward Ruppel  
Edwin Rutherford  
Donald Schmidtman  
Earl Sauble



Joseph Schoenfeld  
Herbert Schwartz  
John Schwartz  
Robert Seger  
Richard Setz



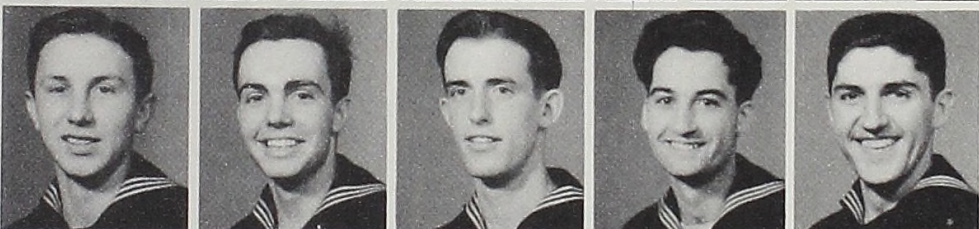
Donald Shaw  
Robert Shelp  
Albert Shuler  
William Shumaker  
Robert Shutes



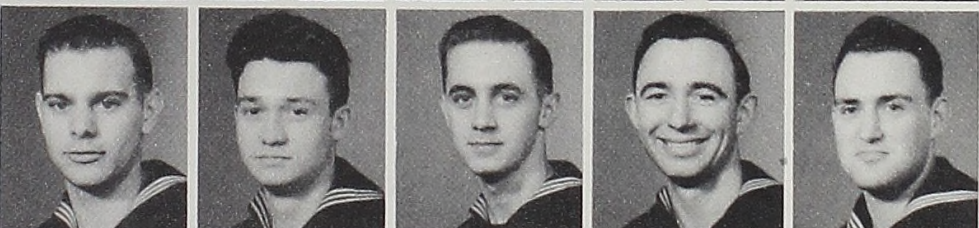
Sidney Sinclair  
Carl Smith  
George Snively  
Richard Spry  
Stanley Sterling



Jack Stonehouse  
Ernest Strawman  
Theodore Townsend  
David Trezise  
Robert Uhlman



James Urquart  
Robert Valade  
Nathan VanOsdal  
John Vetter  
Robert Vlastic



Paul Volgyes  
James Watt  
Robert Wendland  
Heinz Wernecke  
Thomas Williams



T. J. Wilhelm  
Richard Wilson  
Robert Wolfe  
Ted Zarembo  
Louis Zimmel



GOOD SHIP WRIGHT

## ORGANIZATIONS

Wartime conditions have had little effect on the social life of the college, and innumerable parties and dances sponsored by the three sororities, one fraternity, and the Navy Club have provided ample fun and entertainment for the students. As so few civilian men attended Alma this year, only one fraternity, Delta Gamma Tau, was active. However, the Navy Club, composed of the men from the V-12 unit, took a large part in Campus activities; and their Bon Voyage Formal Dance, held in February, was one of the highlights of the year. Besides holding dances for the entire student body, the sororities, Alpha Theta, Kappa Iota and Sigma Philo had the traditional closed parties for their members. Regulating the rushing and pledging of these three groups was the Inter-sorority Council, with representatives from each sorority.

The student government this year has been carried out by the Student Council, the Community Committees, and the Women's Senate. The Student Council, composed of representatives from each class, and the Community Committees which represent every phase of college life, was effective in helping to direct the activities of the student body. Meeting twice a month to discuss matters concerning the girls and the management of the three houses Pioneer Hall, Delt House, and Senior House, the Women's Senate, whose members are elected from the four classes, was the efficient governing organization for the women on the Campus.

Hitting an all-time high this year, the Drama Club presented four plays. Beginning the season with the Pulitzer Prize comedy "You Can't Take It with You," the club then gave Thornton Wilder's "Skin of Our Teeth." This was its first college performance in Michigan. In the spring term, turning to something lighter, the Thespians presented "My Sister Eileen" and the murder mystery "Uncle Harry." The speech department also had a very active season, the members participating in state-wide debate contests, panel discussions, and prose and poetry contests.

Besides sponsoring the A Cappella Choir which made numerous trips throughout the state entertaining large audiences, the music department held two recitals a month, the purpose of which was to give the student poise and confidence before a group. The Art Department offered a chance for Navy and civilian students to display their talents also.

The Religious Life group has been very active this year, planning a Spiritual Emphasis Week that was very successful, and sponsoring the Christian Fellowship which meets every Sunday evening.







Left to Right—Nancy Harden, Edwina Traphagen, Margaret Watson, Eugene Mauch, Nettie Wilson, Walter Brieden, President; Lawrence Rowe, Ben Clark, Gerry Wadley, and Ruth Edwards.

## STUDENT COUNCIL

The Council was guided through a successful season by its president, Walter Brieden. Eugene Mauck acted as vice-president and Nettie Wilson as secretary. The duties of the treasurer were performed by Margaret Watson. Other members of the Student Council were: Edwina Traphagen, Nancy Harden, Ruth Edwards, Gerry Wadley, Larry Rowe, and Ben Clark.

The Alma College Student Council, organized in 1919, has completed its twenty-fifth year of service. The object of the Student Council is to exercise supervision over student activities, organizations, traditions, customs, and conduct; and to crystallize and make more effective the most worthy of student opinions; to provide an effective means of communication between the student body and the college authorities.

Membership on the Council is of two kinds: elective and appointive, and consisting of fourteen members: four from the senior class, three from the junior class, two from the sophomore class, and one from the freshman class. The appointed members are from the Sororities and Fraternities.

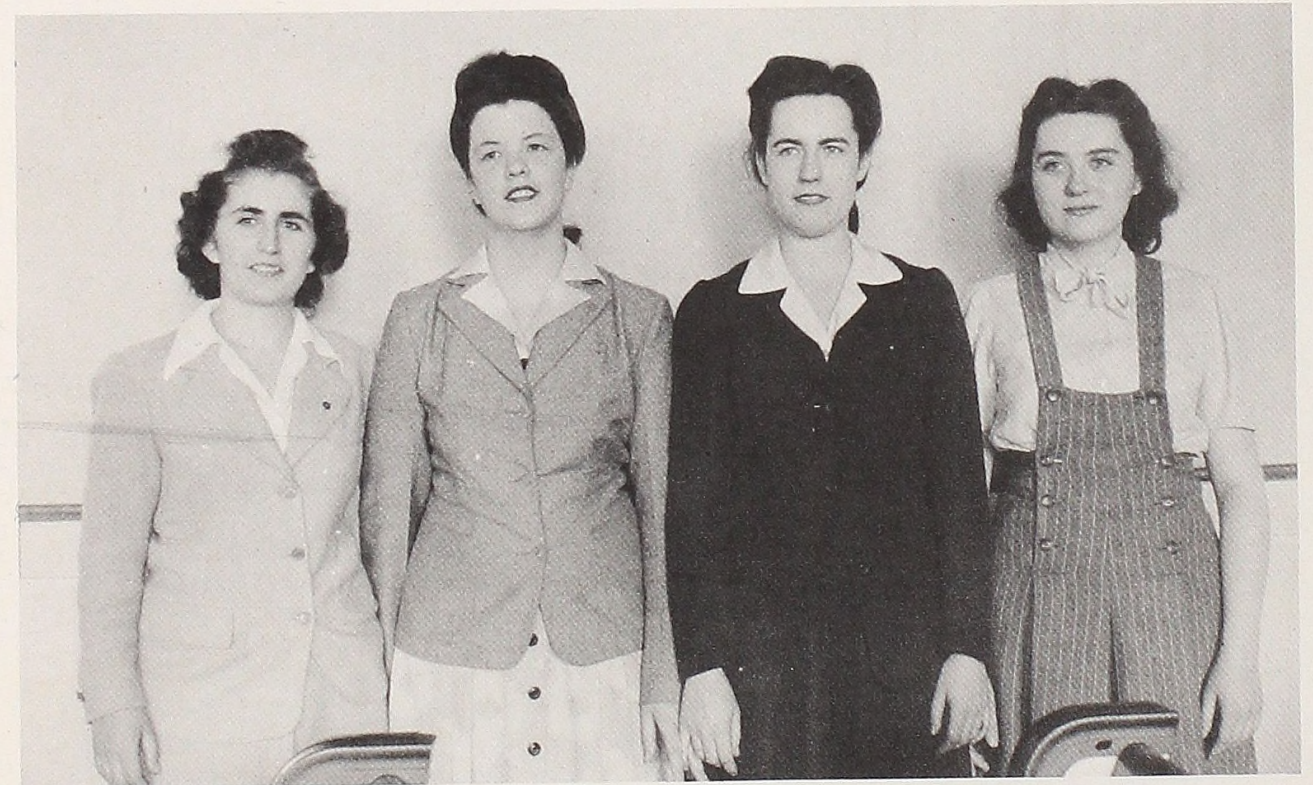
The entire student social program is under the control of the Council. The funds allotted for social affairs are adjusted by the Council. This year the Council purchased a Coca-Cola cooler for the Chapel Recreation Room. It has presented the Friday Night Mixers and also a fun night and has sponsored several all-Campus picnics. The Council conducts the annual Pajama Parade, the Flag Rush, and the Tug-of-War along with Homecoming and Campus Day activities. Again, Thursday Chapel programs were conducted under the guidance of the Council. This year the Student Council has started a fund for the new Union eventually to be in the basement of Wright Hall. This project is in commemoration of Professor Hans Richter.



W. A. A. Aritha Hammond, Nettie Wilson, President; Gerry Wadley, Jane Patton, Nancy Wauchek, Ruth Edwards, and Marge Wunderlich.

## FELLOWSHIP

Lois Glenn, Vice-President; Jean Truman, Secretary and Treasurer; Betty Hartley, President, and Agnes Feagler, Publicity Manager.



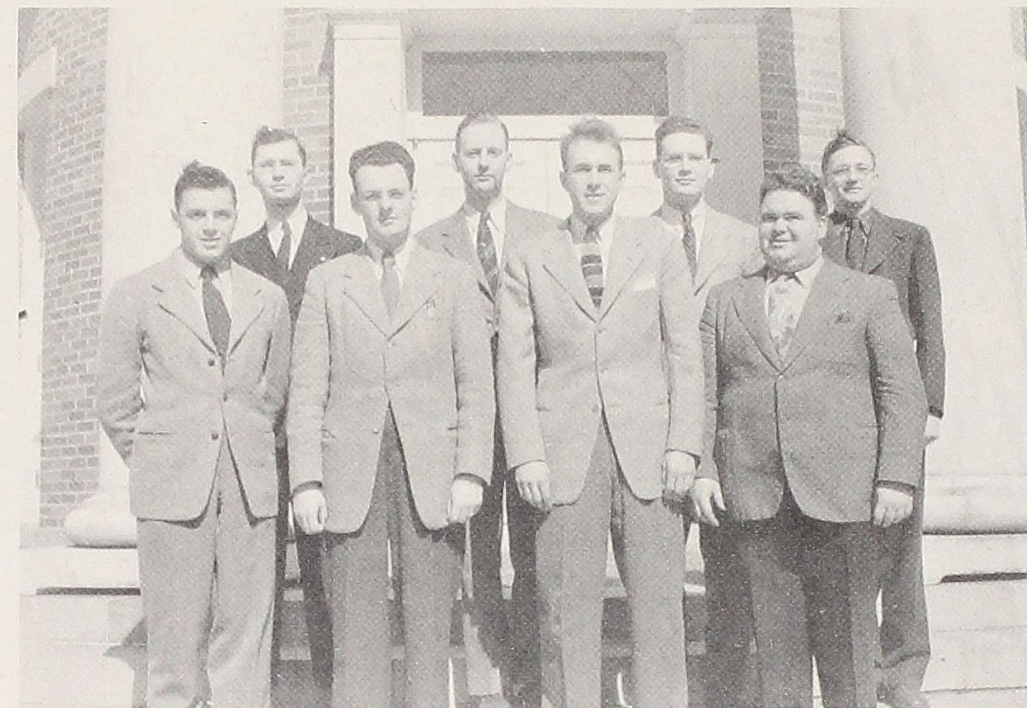


## SCOTSMAN

Ruth Edwards, Co-editor; Amy Middleton, Art Editor; Nan Fischer, Layout; Marjorie McCarty, Co-editor; Robert Shutes, Layout; Robert O'Malley, Layout Editor; Eugene Mauch, Photograph Editor; George Snivley, Layout. Not pictured—Glenn Sempsrott, Business Manager.

## ALMANIAN

Ruth Edwards, Business Manager; Barbara Lull, Circulation Manager; Robert O'Malley, Layout Manager; Margaret Watson, Co-editor; Heinz Wernecke, Co-editor.



Roger Barrette, Lawrence Rowe, Walter Brieden, Glenn Sempsrott, Donald Allurad, Ben Clark, Robert Nixon, Ralph Burroughs.

## DELTA GAMMA TAU FRATERNITY

The Delts continue to be an important cog in the campus machine, following their code of promoting the highest moral, social, and intellectual ideals and furthering the friendly spirit between the V-12 Unit and the college.

The influence of the Delts is felt in every phase of campus life. Its members are among the leaders in all activities including scholastic achievements. Activities in which the members of Delta Gamma Tau participated and cooperated included: football, softball, bowling, tennis, choir, band, debate, oratorical and extemporary speaking contests, religious life committee, student council, college plays, and work on the publication staff of the Scotsman.

During the year, the Delts lost by graduation Andy Edgerton, Robert Bowman, Charles Pullum, and Jim Towne.

Because Delta Gamma Tau is the only fraternity on the campus, it has had to be the backbone of all college functions and will continue to be in the future.



Doris Pollum, Lydia Slvani, Jean Huff, Helen Olander, Helen Collins, Mary Tomes, Mark Katherine Shevrovich, Norma Haas, Prudence Taylor, Nancy Finlayson, Allison Smith, Nan Fischer, Isabel Duvendeck, Ellen Angell, Ruthe Kreulen, Marjorie Bow, Gerry Wadley, Kay Willis, Amy Middleton, Betty Welgoss.  
 NOT PICTURED—Maryhelen Baltz, Marjorie McCarty, Carol Peterson.

## ALPHA THETA SORORITY

Alpha Theta, founded in 1870 by Mrs. Elizabeth Hunting, is the oldest sorority on the Alma College Campus. The Thetas continue to be a group of ambitious, well-liked girls full of ideas for an active year.

The "Theta Mixer" ushered in the social season as is customary. Following this, came the "Theta Tavern" which is becoming a well-known tradition on the campus. Complete with floor show and the music of the "Swingin' Scots," the dance possessed the atmosphere of a real tavern.

To begin the rushing season, the freshmen accompanied the Thetas to "Kismet" and later to the Senior House for entertainment and refreshments. At the end of pledging, a closed party was held honoring the pledges, members, and dates.

The annual spring formal was held May 26 at the Alma Country Club. The Thetas in gay formals with their escorts in Navy blue enjoyed an evening of dancing and merry-making.

On June 2nd, the entire sorority packed up their camping clothes and a good food supply and headed for Crystal Lake for their annual week-end house-party. Sunday night the group returned proudly displaying their sun-burns.

On graduation morning, June 22nd, the sorority held its farewell breakfast. Mothers and friends of the members were present to bid good-bye to the graduating members.

In the fall term, Ruthe Kreulen acted as president, and the spring term found Marge Bow in office.

## KAPPA IOTA SORORITY

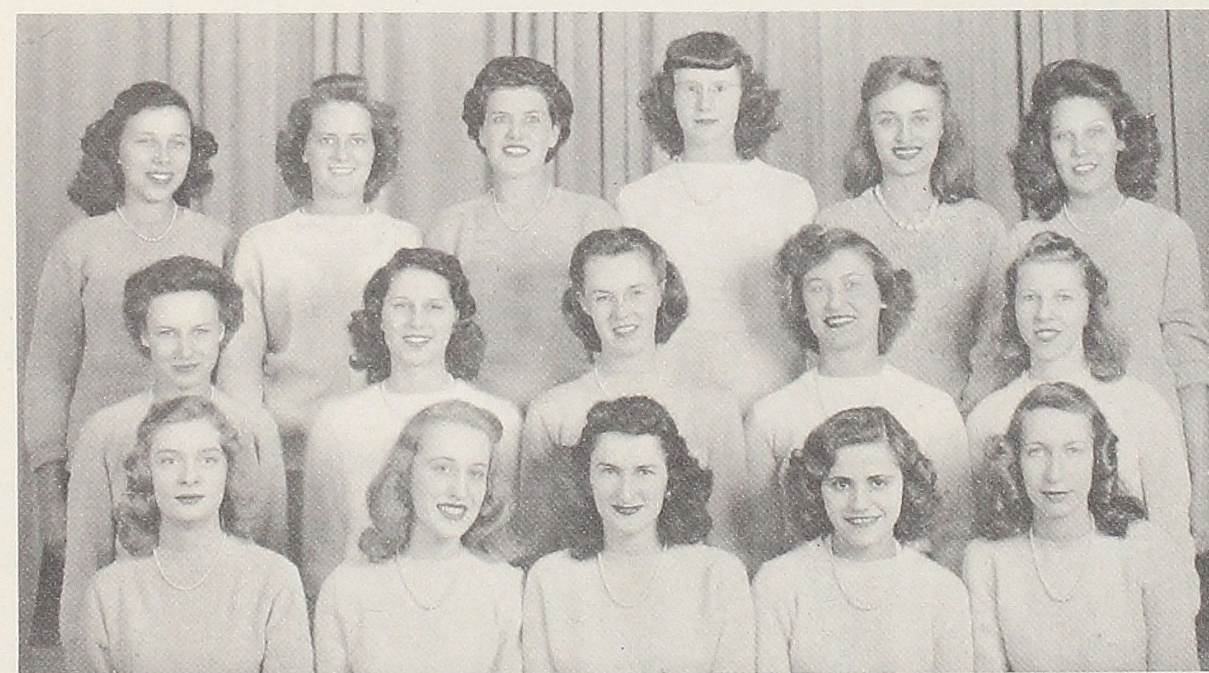
The Kappa Iota Society was founded in 1921 by Dean Elizabeth Roberts. The society has a three-fold purpose: to inspire higher ideals, to promote an interest in all forms of literature, and to further the social activities of Alma College.

During the past semester the K.I.'s have been very active, having given several closed parties, a faculty tea and an open party. The "South American Swing" open dance was one of the highlights of the social calendar and the scenes from "Carmen" some of the most enlightening. The society also put on a chapel program at which their traditional skit "Little Nell" was given and again was received with much enthusiasm. During the rushing season a picnic was given in Turks Park, a dinner at the Park Hotel, and several spreads and coke dates. The highlight of the year was the formal party given in the first part of May.

### OFFICERS

Presidents .....Patt Williams—Nan Wauchek C. Secretaries.....Catherine Rowell—Jean Winship  
 Vice-Presidents.....Nan Wauchek—Phyllis Johnson Treasurer .....Ruth Burket  
 Recording Secretary.....Jane Patton S. Chairman.....Nettie Wilson

Shirley Sharpe, Betsey Ross, Lois Fowier, Christine Agorginitis, Phyllis Yunker, Jane Patton, June Slyfield, Phyllis Babcock, Lois Church, Phyllis Johnson, Nancy Wauchek, Jean Swick, Nettie Wilson, Mary Milham, Patt Williams, Ruth Burket.





Margaret Mason, President; Marian Jones; Edwina Traphagan, Treasurer; Emma Richter, Corres. Secretary; Alice Baney; Barbara Lull; Ruth Edwards, Recording Secretary; Aritha Hammond, Vice-President, and Vera Baney.

NOT PICTURED: Ardelle Allen, Pat Atkins, Joan Brett, Jan Cordis, Elaine Edwards, June Fuller, Marian Mattson, Marilyn Mundell, Vera Parsons, and Naomi Place.

## SIGMA PHILO SORORITY

Sigma Philo, the youngest sorority on the Campus, was founded in February, 1943, when the Philomathean and Pi Sigma Nu sororities combined to alleviate pledging difficulties.

High ideals, true friendship, loyalty, courage, and faith make up the real Sigma Philo.

The Sigma Phi's not only excel scholastically, having held the cherished scholarship cup the last two years and claiming the holders of the University of Michigan scholarship for 1943 and 1944, but it's extremely active as well in the social life of Alma.

Under the leadership of Marian Jones and Margaret Mason the Philos began the year with the annual "Farm Frolic" which was an open square dance and drew a near record crowd. Unique in always sponsoring gay and different parties, the Sigma Phi's in January combined a sleigh ride, a spaghetti dinner and a dance into Sleigh Ride Inn and in May gave a formal dinner-dance.

Other successful events were a faculty tea, a week-end house party at Crystal Lake, closed roller-skating, picnic, and theater parties, formal dinners for rushees and pledges, coke dates, and spreads. Active to the very end the Sigma Phi's rolled up in sheets on a huge bed (a mattress bedecked floor) on June 22nd and ended with a farewell breakfast at Wright Hotel on June 23rd.



MUSIC  
DEPARTMENT



## CHOIR

The Alma College A Cappella Choir, under the direction of Eugene F. Grove, is composed of forty students who are selected for membership on the basis of competitive tryouts.

The accomplishments and excellent work of the choir are well known throughout the state. In addition to the annual Christmas and commencement concerts, this organization makes numerous appearances for churches, schools and clubs.

## SEXTET

The girls' sextet was organized in November by Ruthe Kreulen. Since then the group has traveled all over the state giving concerts for churches and various alumni organizations. All members were selected from the regular choir personnel. Since Ruthe's graduation in February, the sextet has been directed by Don Allurad. Members include Joyce McKinley, Jean Truman, Nancy Harden, Mary Milham, Jean Slaski, and Nancy Wauchek.

## SWINGIN' SCOTS

A glimpse at the year's social calendar brings to light the "Swingin' Scots." Said Scots, you recall, provided the dance music for the Alpha Theta Tavern and Delta Gamma Hop.

The band organized by the Navy boys includes brass-men: Gudelman, Daab, and Miller; reed-men: Cairns and Strawman; rhythm section; Mills at the piano, Shaw at the drums, and Gray and Sempsrott at string base. Vocalist Dave Berg completed the band roster.

## BAND

A new music organization, which began November, 1944 after a three years' absence due to lack of leadership and instrumentation, is the Alma College Band. This group of thirty-five Navy and civilian students was organized and directed by Jack Giere. They added their musical talents and enthusiasm to all the home basketball games with the able assistance of the six majorettes and drum major.



A CAPPELLA CHOIR



Wanda Bigler, Orthella Anderson, Jean Rosendale, Joyce McKinley, Prof. Grove, Nancy Waucheck, Lois Glenn, Jane Patton, Betty Ellis, Nettie Wilson, Marge Bow, Jean Truman, Helen Hawkins, Betty Smith, Vera Parsons, Jean Slaski, Mary Milham, Wilma Brew, Maxine Miller, Jean Winship, Barbara Kemper, Edward Ruppel, Leslie Barkim, John Hamel, Stewart Flaschen, Lawrence Rowe, Eugene Mauch, Sidney Sinclair, Thomas Williams, Ben Clark, Robert Shutes, Philip Daab, Donald Cairns, John Guddelman, John Bland, Bert Miller, Glenn Sempstrott, Donald Allurad.



ALMA SCOTS KILTIE BAND

SWINGING SCOTS





## FINE ARTS DEPARTMENT

The work in fine arts has been planned to meet the needs of students desiring an intelligent knowledge and understanding of art as a part of their cultural life; for those who wish to have some actual art experiences; and for students planning to study art as a profession after the completion of their college work. The purpose of the department is to develop an understanding and appreciation of art and to stimulate creative ability; to make art a vital part of college experiences and an essential element in a liberal arts education.

Since the beginning of 1943, the Fine Arts Department has been under the very capable direction of Mrs. Julia Roecker, who has improved the department in many ways.

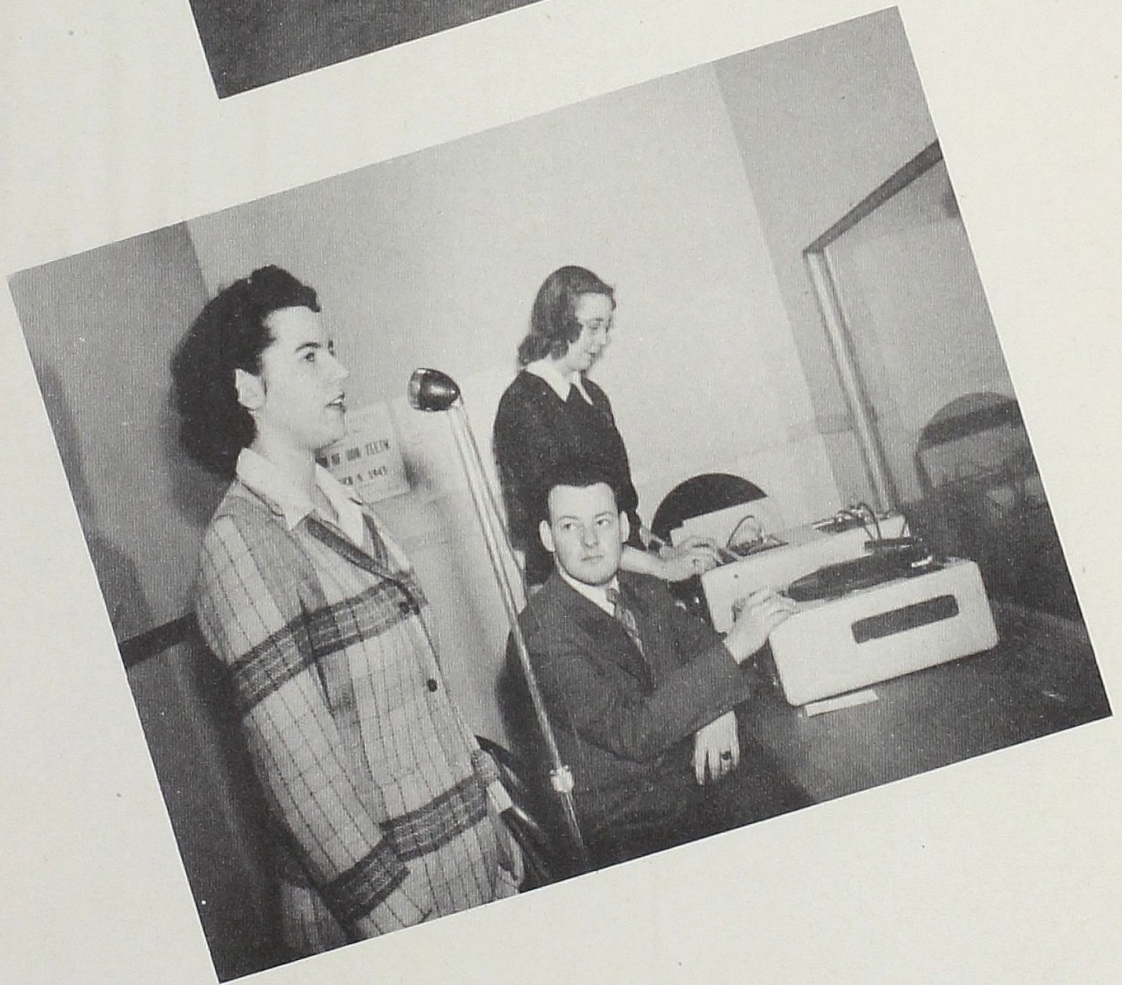
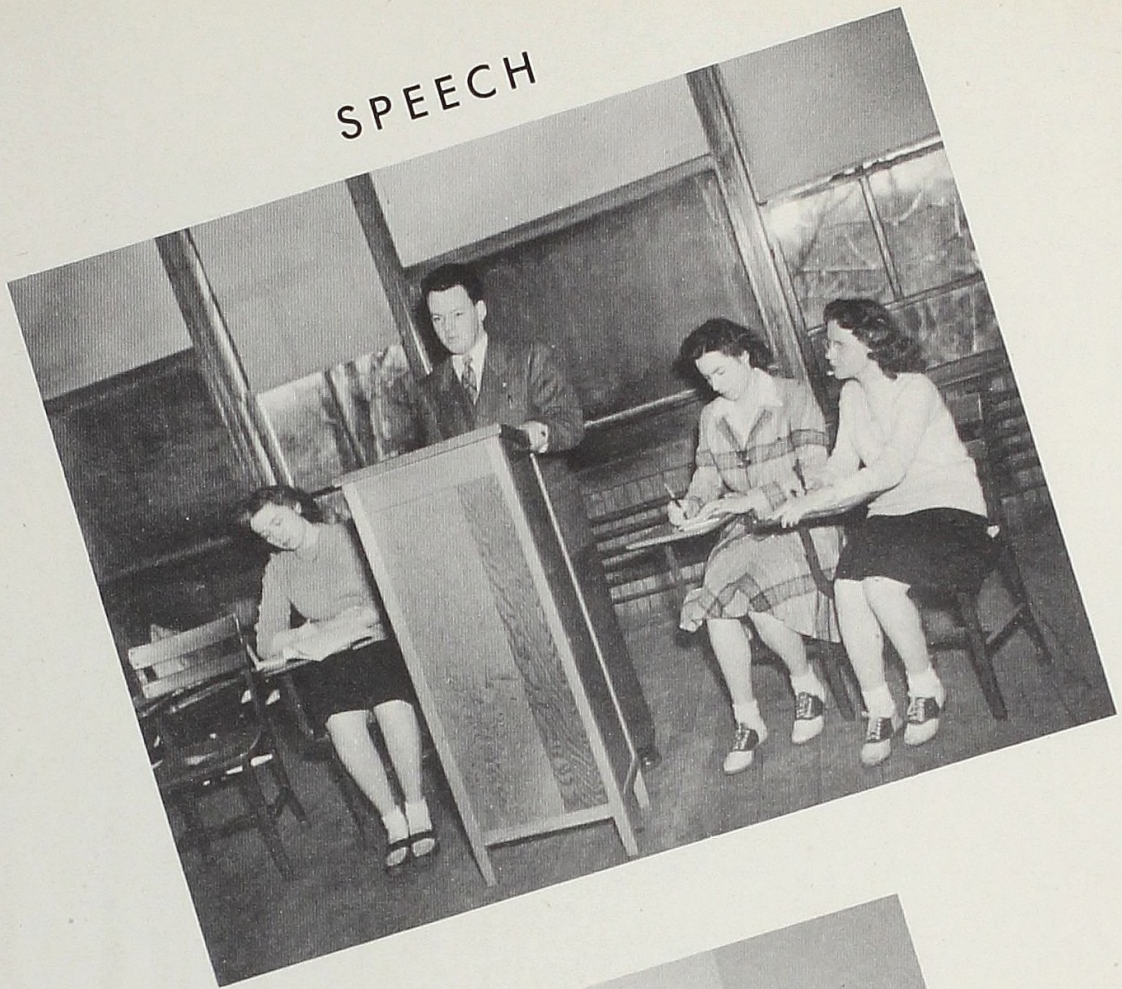
One of the most interesting courses offered is "The Study of the Home" or Interior Decoration, in which the student has the opportunity of planning his future home. The valuable topics studied in the course include furniture arrangement, design principles, and textile selection.

Other courses offered include Drawing and Painting, Dress Selection and Designing, and Commercial Art. The dress selection class includes the actual practice of designing and making one's own dresses to suit the particular figure and coloring.

In the drawing and painting classes, the student has the opportunity of choosing his own mediums, and becoming adept in many. The various mediums include charcoal, pastel, water color, and oils, and the subjects vary from still life to life-models.

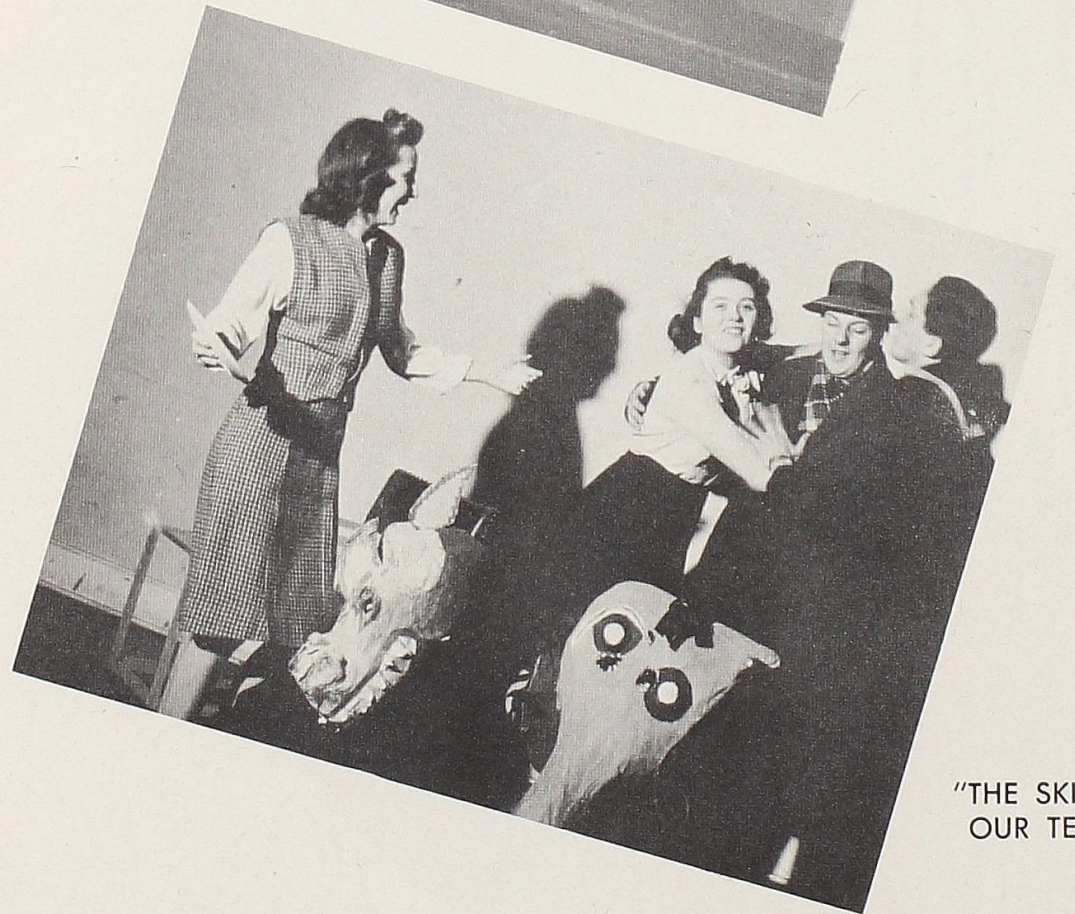
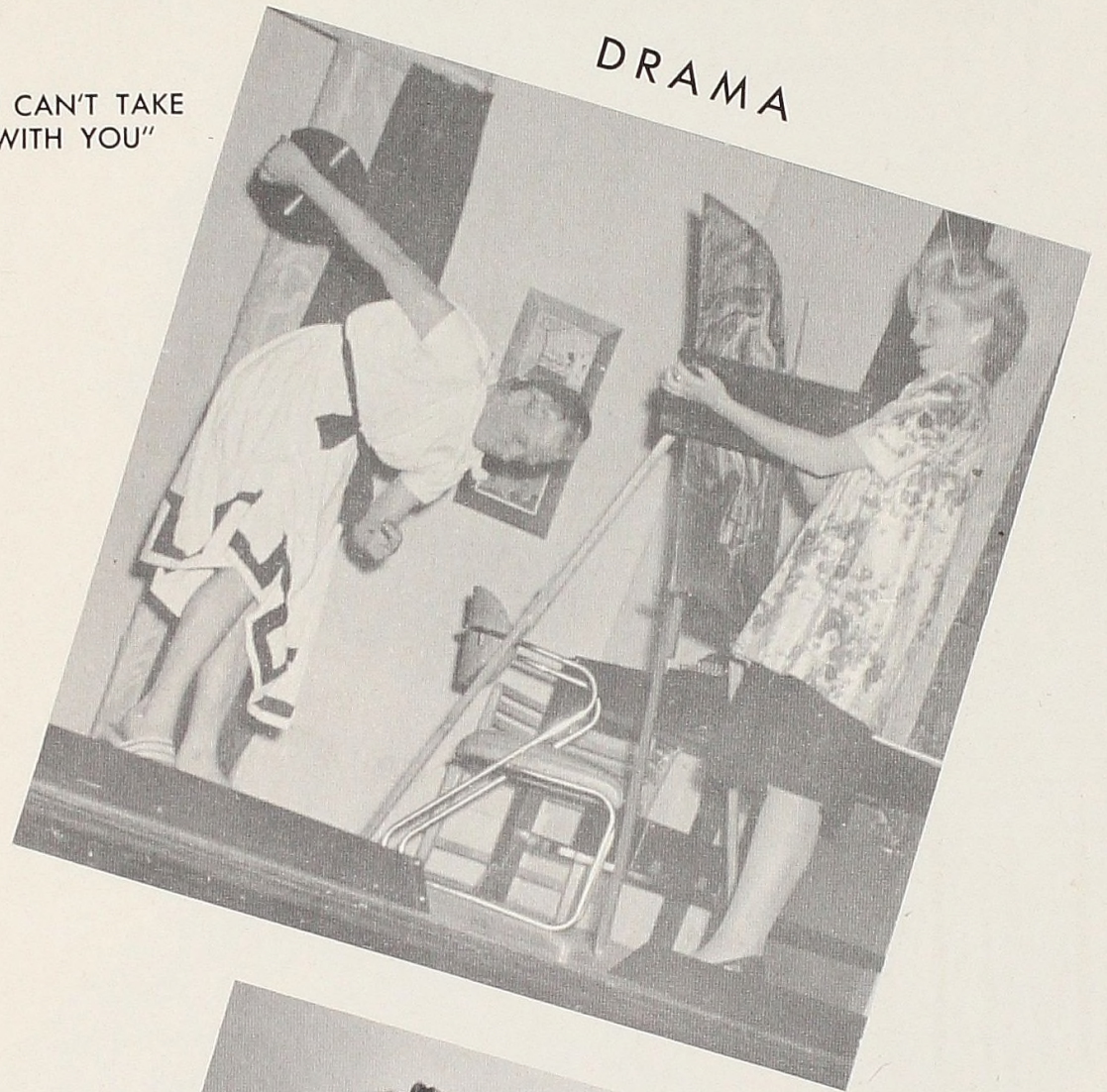


SPEECH



DRAMA

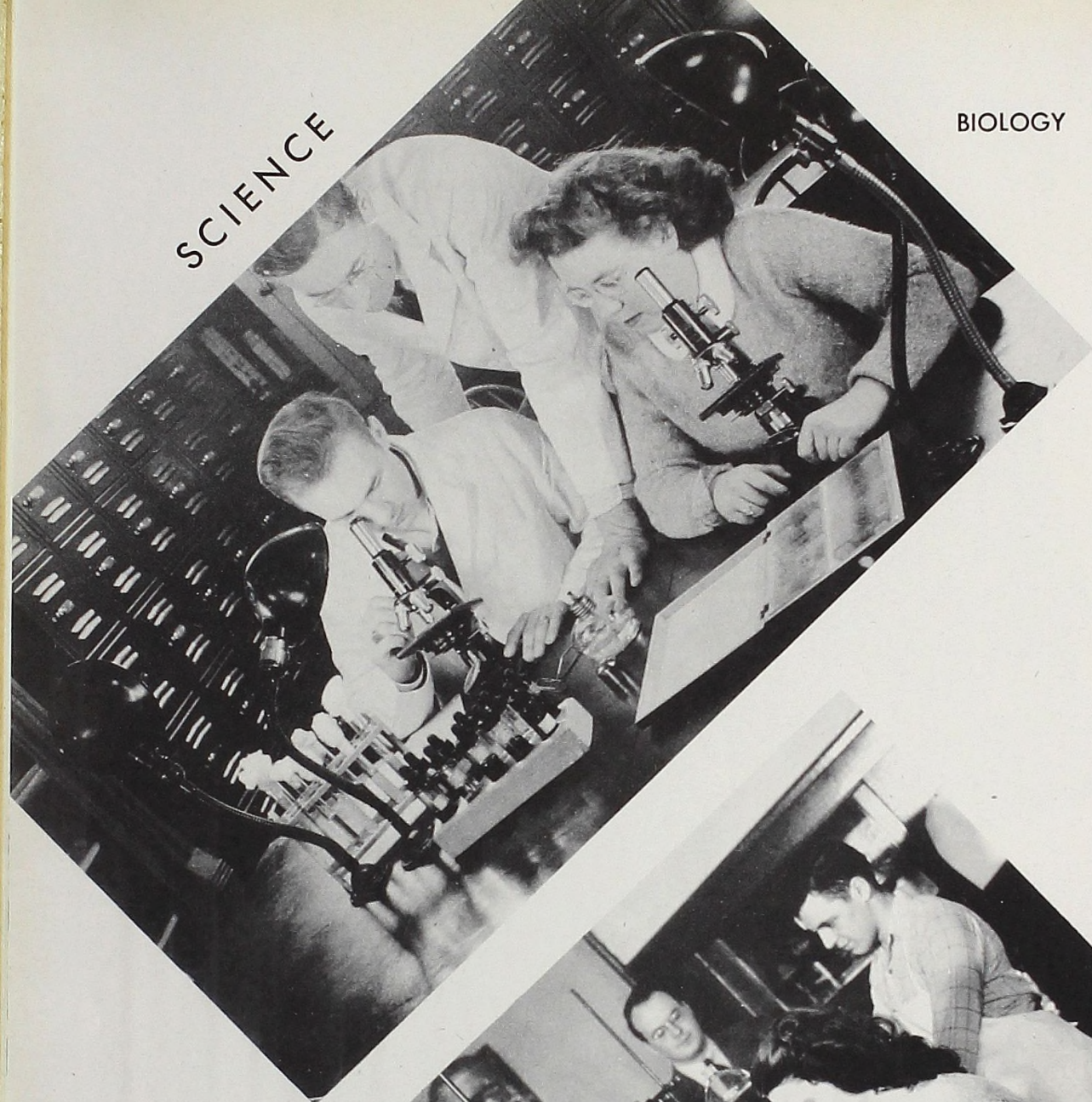
"YOU CAN'T TAKE IT WITH YOU"



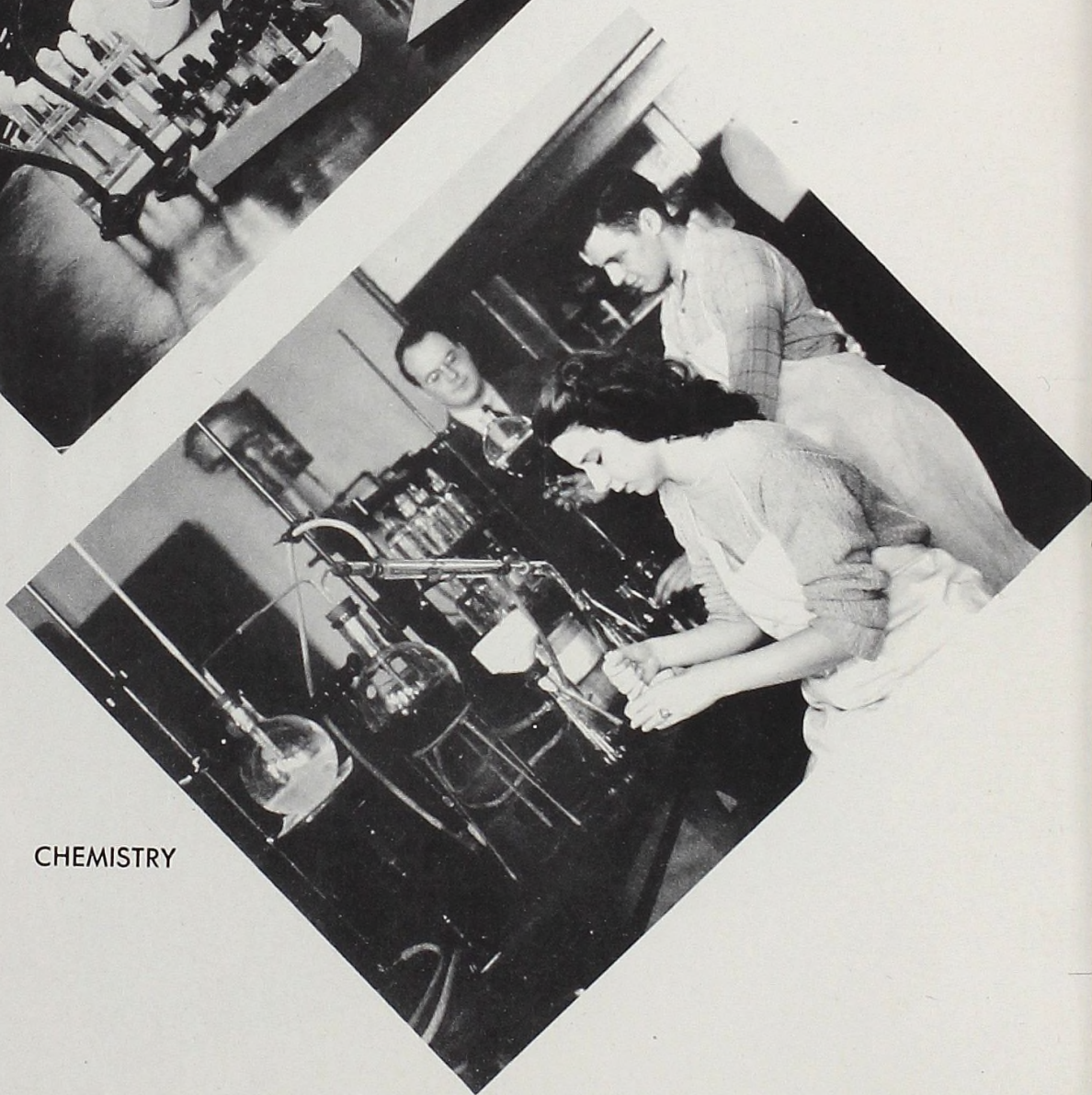
"THE SKIN OF OUR TEETH"



SCIENCE



BIOLOGY

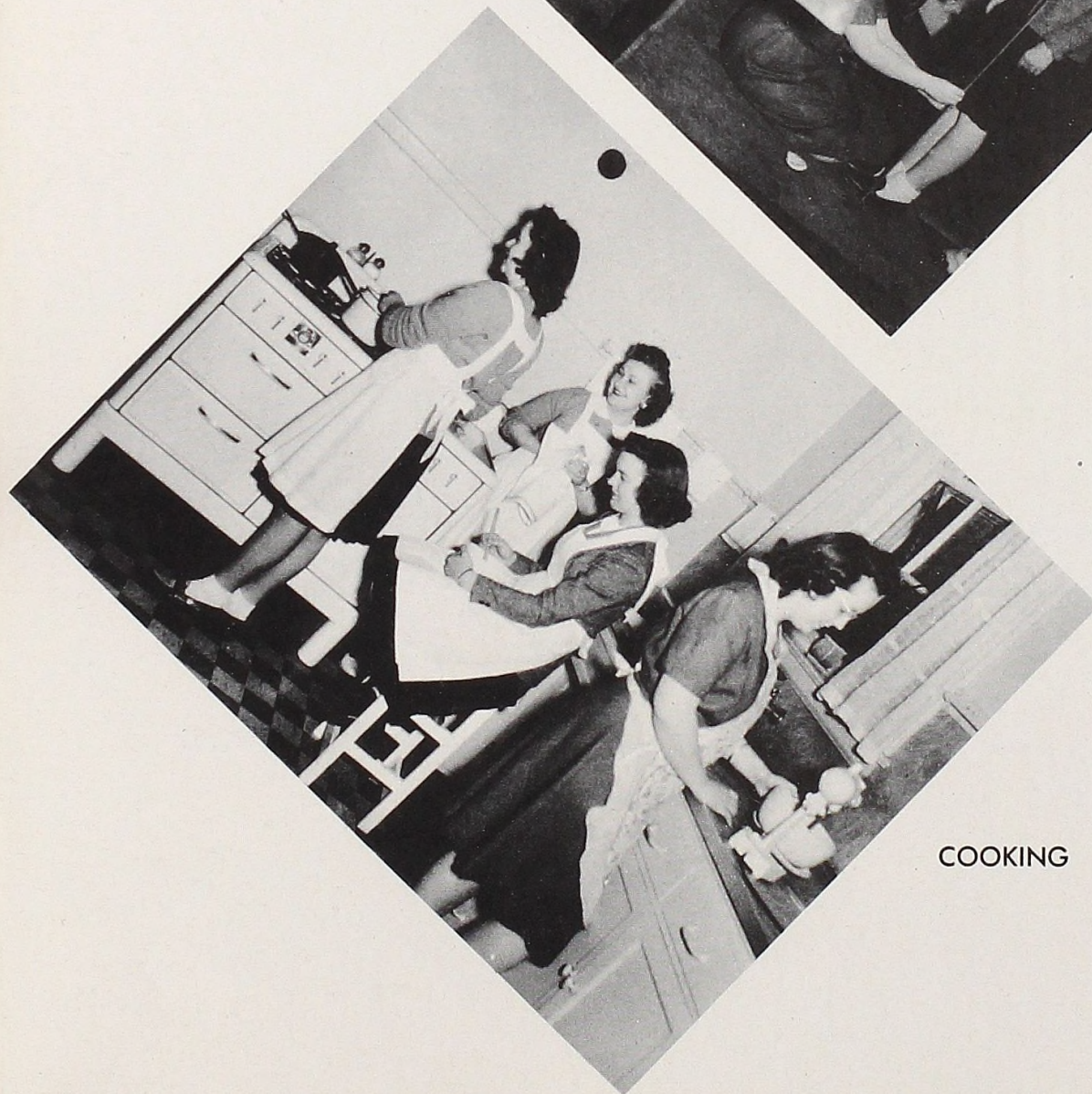


CHEMISTRY

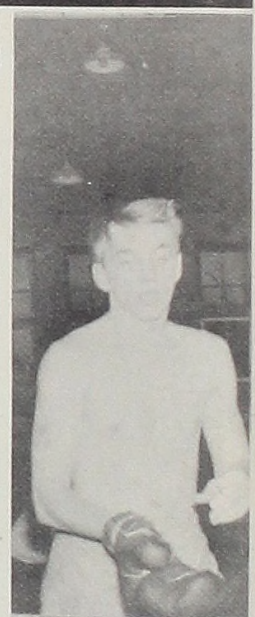
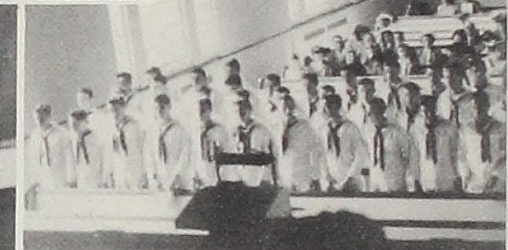
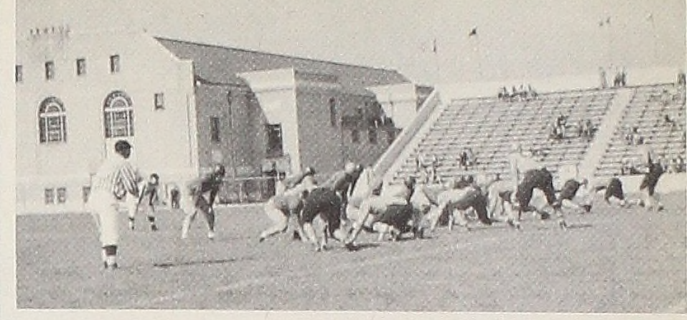
DRESS DESIGN



HOME ECONOMICS



COOKING



---

## SCOTS'

---



Coach "Bill" Lear

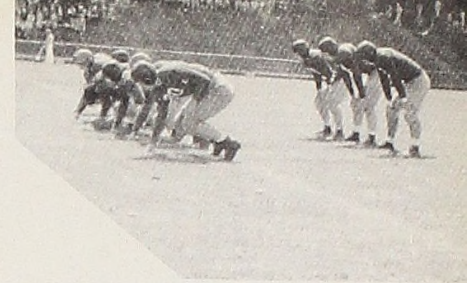
---

## MENTOR

---

Undertaking his first college coaching position, Coach Bill Lear came to Alma College from Alma High School to boss the Scots in November, 1944. From the standpoint of victories in inter-collegiate games, it was an unimpressive year. This was chiefly due to lack of man-power since more than fifty per cent of the nearly two hundred and twenty-five men enrolled at Alma were ineligible freshmen. However, it can truly be said that the football team produced during 1944 was an aggressive, hard-fighting lot that Alma can be proud of. In basketball the same story is true again, for Alma witnessed an inexperienced, typically freshman quintet playing heads-up ball representing her in this sport, and as in football the Scotties put up better fights than the scores might indicate. There can be no doubt that the teams, drawn chiefly from the V-12 Unit, would rank high in Michigan Intercollegiate Sports if permitted to go several seasons together.

It was in intra-mural sports that Coach Bill Lear probably did his best work, where, with Chief Specialist Burkhart and Specialist Bob Wilson of the Navy Unit, he kept a highly competitive spirit aroused among the V-12 trainees. Besides the regular five hours of Physical Training a week for each man, time was found for track meets, touch-football, wrestling and boxing tournaments. Not even the impressive reports submitted to the Navy Department will give Coach Lear and staff the entire credit due them for their untiring effort and ability on the fields and in Memorial Hall. Several hundred men have been coached with knowledge, leadership, and a smile and have gained something they will never lose.



## FOOTBALL

Alma's football team played a rugged, six-game schedule this year, and when the season ended the Scots' record showed no victories. Due largely to transfers and ineligibility rules, the Scots started the season with a small squad of thirty men, few of whom had had previous experience. Throughout the season the team was plagued by injuries to key players and lack of experience. Nevertheless, the men of Alma displayed some excellent fighting spirit and ability, and many of the games were close, hard-fought affairs.

The season opened in early September when Alma and Central Michigan played the first football game of the new fall season in the United States. Held on even terms for the first half, Central Michigan made their experience pay dividends, and Alma was outscored 20 to 14. The Scots then journeyed to Ohio, where they were snowed under by a hard-running Dennison attack, 46 to 0. Alma engaged Central Michigan in a return contest, and this time Central emerged victorious, 32 to 13. The Maroon and White then played host to Michigan's "B" squad. Although the Wolverines led by but a small margin at the half, superior reserves and experience told the tale, and Coach Lear's boys were outmanned, 32 to 13. The Scots tried their luck in Ohio once more, and this time they lost to Bowling Green, 19 to 6, in a nip and tuck affair. In the final game of the season Alma's Fighting Scots played their hearts out for a win, and led at the half time, 12 to 7, but the gods of fate turned their backs on Alma, and once again Michigan's "B" team eked out a 13 to 12 win.

There we have the '44 season in retrospect. It was a good season as far as building a team, and installing the will to win and the spirit of cooperation go. Alma had a light team; they were outweighed by all opponents. Consequently, injuries were frequent, and they handicapped the small squad. The Scots asked no quarter, nor gave none, and they were satisfied with the victories they won in their hearts. This is true of football. Red Dillon, captain-elect, starred offensively for the Scots, while Lacy proved a bulwark on defense.

Front Row—Autio, Bataille, Adorny, Bailey, Menza, Chapman, McBride, Rutherford, Hathaway, Cotterman VanOsdal.  
Second Row—Ekelman, Hilton, Kostan, Bell, Voegeh, Avant, Warner, Temple, Edgerton, Teach, Dillon, Miller.  
Third Row—Lucas, Perry, Kyselka, Walker, Eber, Semarott, Bos, Andrick, Loud, Lacey, Coach Lear.





## BASKETBALL

Alma's 1945 basketball team started the season as a green and inexperienced squad, but with a determined spirit under the excellent guidance of Coach Bill Lear, they ended the season as probably the most improved team in state collegiate circles.

Opening the season against a star-studded Dow Chemical team which boasted two All-American players in the lineup, the Scots went down to a 72-17 defeat. Selfridge Field then followed with a 63-42 decision over the Scots in a fast and rugged game.

Leading from the start, the Scots saw their hopes for an initial victory fade in the closing minutes of their contest with Calvin College as two quick tallies turned the tide. However, against Grand Rapids Junior College, the Alma quintet was not to be denied a victory and rolled to a 75-25 win as all but one member of the squad broke into the scoring.

Notre Dame's highly touted courtmen gave the Scots a 71-30 trouncing, and Central Michigan followed with a 61-49 win in a fast contest.

In the next game Captain Keith Krause hooped 18 points to pace the Scotsmen in a 57-52 defeat over Selfridge Field, and the Scots stayed in the win column against Grand Rapids with a 59-32 triumph.

Calvin followed with a 48-45 repeat performance of its earlier meeting with Alma and powerful Western Michigan triumphed, 49-36.

The Scotsmen then collected their final wins of the season, topping Fort Custer, 42-34, and Kellogg Field, 41-25. Western and Central Michigan closed out the season for the Scots with 56-37 and 57-36 wins, respectively.

The brilliant scoring record of Keith Krause, the defensive play of Don Matheson and Tom Wanty, and the back-board play of Gene Mauch and "Stew" Flaschen, highlighted the season, while much credit is due Hall, Chapman, Kosten, Batterton, Manoo-gian, Hall, Seger, Clements, and VanOsdol who helped maintain Alma's aggressive spirit.

## INTRA-MURAL SPORTS

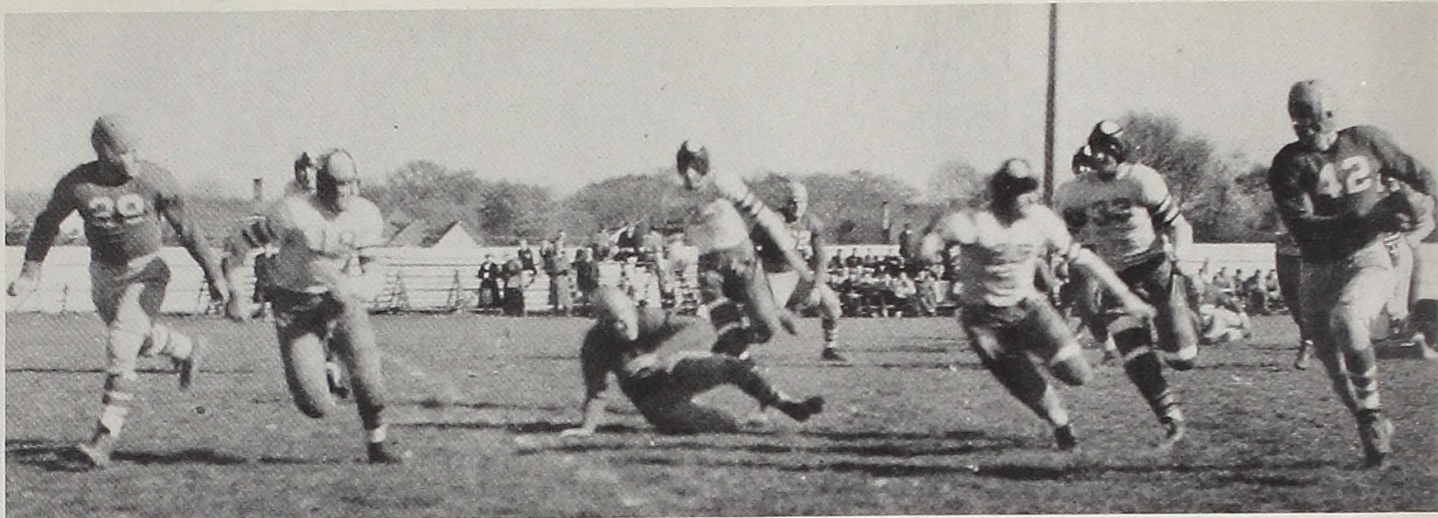
In keeping with war-time limitations, the emphasis in Alma's sports activities shifted from an intercollegiate to an intra-mural program. Much of the success of this program is due to the Intra-Mural Committee under the guidance of Coach Bill Lear and Staff which laid down rules and prepared schedules for the various teams representing the platoons of the V-12 Unit.

In early fall Intra-Mural sports got off to an early start with track the main feature climaxed by an inter-company meet. During the winter Memorial Hall buzzed with plenty of action-packed basketball games as a six-team circuit battled it out for the title.

On January 10th, a tournament, in sequel to wrestling instructions given to all men in physical training periods, was sponsored by the Athletic Office. Following this, boxing instruction was the high-light in the gym periods; until on January 30th, twenty-seven men, entered in five weight divisions, vied for honors in the boxing tournament. Other tournaments, such as ping-pong and bowling, were also in progress at the time and in the latter tournament, Companies One, Two and Three emerged with three game series scores of 2425, 2343, and 2241.

## GYM CLASS





## WOMEN'S SPORTS

Physical fitness is especially a requirement for participation in the war effort. Due to this fact, women's sports have taken on added significance.

The annual fall picnic sponsored by the W.A.A. was held in the Jungle. All college women participated. An outdoor lunch was prepared around the campfire. After a meeting at which the officers were introduced the gathering broke up. After Christmas vacation, basketball became the popular sport. Thursday night basketball practice was open to all the girls. Several times the Alma high school teams competed with the college women in games, the college teams being victorious each time.

The Chapel Recreation Room has been the source of much entertainment. On open nights the room was open to all students of the college for dancing, cards, shuffleboard, and ping-pong, music being supplied by a juke box.

Co-recreation has played an important part in the enjoyable sports activities for the students. This has included hay-rides, ice-skating parties, dances, picnics, and numerous out-of-door sports.

## BOARD OF TRUSTEES

### OFFICERS OF THE BOARD OF TRUSTEES

Samuel H. Forrer.....	Chairman
Ralph D. Kearns.....	Vice-Chairman
A. G. Studer.....	Treasurer
William McFadden.....	Secretary

### MEMBERS OF THE BOARD

#### Class of 1945

Dr. A. G. Studer, 2020 Witherell Street, Detroit  
 Rev. Ralph D. Kearns, D.D., 703 Grand Traverse, Flint  
 Rev. Benjamin J. Bush, D.D., 100 Lawrence Ave., Detroit  
 Mr. Reid Brazell, 815 State Street, Alma

#### Class of 1946

Mr. Maynard A. Cook, 4000 Cathedral Ave., Washington, D. C.  
 Rev. John A. Gardner, D.D., Midland  
 Mr. J. E. Wellwood, 1024 Grand Traverse, Flint

#### Class of 1947

Mr. Stephen S. Nisbet, Fremont  
 Rev. Samuel H. Forrer, 8625 E. Jefferson Ave., Detroit  
 Mr. William McFadden, 508 State Street, Alma  
 Rev. Henry W. Fischer, D.D., 702 Adams Street, Saginaw  
 Rev. Edward A. Mohns, Westminster Church, Grand Rapids  
 Mr. J. Nelson Pyle, 3122 Gratiot, Detroit

#### Class of 1948

Rev. John Vander Meulen, 608 West Street, Lansing  
 Mr. Carl W. Bonbright, General Foundries, Flint  
 Mr. Charles H. Bennet, Daisy Manufacturing Co., Plymouth  
 Mr. Wirt M. Hazen, Three Rivers  
 Mr. Jerry Tyler, Tyler Fixture Corporation, Niles  
 Mr. Howard Porter, East Jordan

#### Honorary Trustee

Mr. John W. Pierson, 1829 Federal St., Grand Rapids

## WOMEN'S ADVISORY COMMITTEE

Mrs. Sadie Soule, Alma.....	President
Mrs. A. R. Moon, Saginaw.....	Vice-President
Mrs. Lawrence Montigel, Alma.....	Treasurer
Mrs. Roy W. Hamilton, Alma.....	Secretary

Mrs. William A. Bahlke.....	Alma
Mrs. Joseph W. Britton.....	Midland
Mrs. Donald J. Porter.....	Grand Rapids
Mrs. George Wadley.....	Saginaw
Mrs. Richard Waggoner.....	St. Louis
Mrs. C. P. Milham.....	Alma

## ALUMNI ASSOCIATION

President.....	Stephen Nisbet, 1919
Vice-President.....	Molly Parrish, 1937
Secretary-Treasurer.....	Stanley C. Vliet, 1924
F. Roy Phillips, 1914	Richard L. Waggoner, 1923
	James E. Mitchell, 1893

The annual meeting of the Association is held on Alumni Day, which is the day before Commencement.

The Association, formed by the Class of '91, is an important and influential organization. Graduates of the college and kindergarten training departments and all former students of the college are members of the Association.

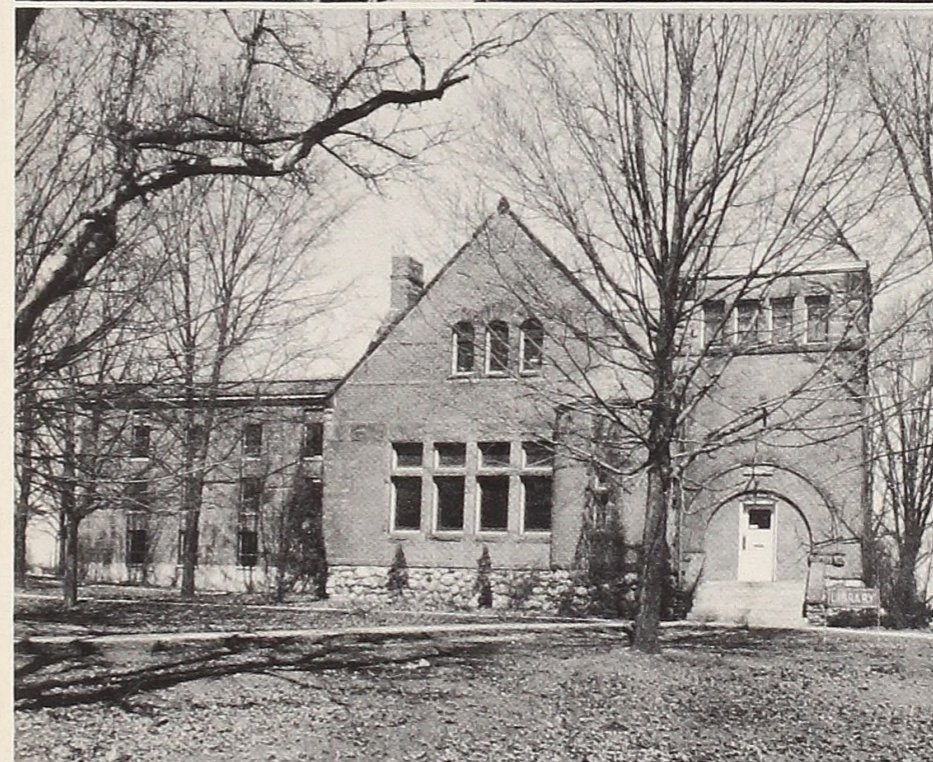
## SYNOD OF MICHIGAN COMMITTEE ON CHRISTIAN EDUCATION

**Ex Officio:**

Rev. Arthur W. Ratz.....	Grosse Pointe
Rev. Melvin R. Vender.....	Cass City
Rev. Alvin O. Jones.....	Escanaba
Rev. W. M. MacKay.....	Lansing
Rev. J. W. Wimberly.....	Grand Rapids
Rev. Wanzer Brunelle.....	Mt. Pleasant
Rev. E. P. Linnell, Chr.....	Petoskey

**Elected by Synod:**

Mr. Harley Gibb.....	Detroit
Mr. Robert Heath.....	Kalamazoo
Mrs. Herman Schaffer.....	Grand Rapids
Mr. Gordon Clack.....	Midland
Mrs. Duncan Samson.....	Detroit
Mrs. Bruce Hodgkinson.....	Marlette
Mr. James Wellman.....	Flint



Adams, Eugene.....Wash. Terrace, Ogden, Utah  
 Adams, Helen.....Sterling, Mich.  
 Allen, Ardelle.....705 Woodworth, Alma, Mich.  
 Allen, Frederic.....385 S. Willard, Burlington, Utah  
 Allured, Donald.....203 Washington, Holly, Mich.  
 Anderson, Harry.....1531 Lake Shore Dr., Chicago, Ill.  
 Anderson, Orthella.....69 Wells, Crosswell, Mich.  
 Anderson, Robert.....Cary, Ill.  
 Angell, Ellen.....451 W. Maumee, Adrian, Mich.  
 Ashpole, Dale.....1147½ E. Lincoln, Dekalb, Ill.  
 Atkins, Arlene.....7383 Wiegand, Center Line, Mich.  
 Avant, John.....Denham Springs, La.

Babcock, Phyllis.....207 West End, Alma, Mich.  
 Bailey, Warren.....Route 1, Cortland, Ohio  
 Baker, Charles.....912 N. Superior, Albion, Mich.  
 Baltus, William.....181 Benedict, Norwalk, Ohio  
 Baltz, Maryhelen.....522 Riverview, Spring Lake, Mich.  
 Baney, Alice.....638 Wright, Alma, Mich.  
 Barkimer, Leslie.....Route 8, Box 409, W. Toledo, Ohio  
 Barrette, Roger.....  
 .....13159 Commonwealth, Wyandotte, Mich.  
 Bartusch, Robert.....704 Hull, Westchester, Ill.  
 Bastyr, Joseph.....1523 Monterey N.S., Pgh., Pa.  
 Batterton, John.....434 N. Lincot, Greensburg, Ind.  
 Bear, Frederick.....654 Putnam, Detroit 2, Mich.  
 Beard, Dorcey.....Box 65, Bullard, Tex.  
 Benson, Merle.....Sunfield, Mich.  
 Berg, David.....11 Cole, Jamestown, N. Y.  
 Berry, Laverne.....1118 Columbus, Benton Harbor, Mich.  
 Bertelsen, Arthur.....2642 Gray, Detroit, Mich.  
 Berto, Oren.....Box 383, Amherst, Wisc.  
 Bigler, Wanda.....1006 E. Superior, Alma, Mich.  
 Bland, John.....78 Washington Circle, W. Hdfd., Conn.  
 Bookatz, Irving.....2983 Mayfield Rd., Cleveland, Ohio  
 Bow, Marjorie.....2222 Delaware, Saginaw, Mich.  
 Bowen, William.....  
 .....465 W. Grand Blvd., Detroit 16, Mich.  
 Brazee, Robert.....Route 2, Manchester, Mich.  
 Brett, Joan.....407 W. Mine, Hazel Park, Mich.  
 Brieden, Walter.....  
 .....13240 Outer Drive, East Detroit 24, Mich.  
 Brink, Stanley.....3435 Conger, Pt. Huron, Mich.  
 Brookman, Paul.....2125 Kansas, Flint, Mich.  
 Brow, Eleanor.....204 Beveledere, Charlevoix, Mich.  
 Bullock, Robert.....6453 S. Morgan, Chicago, Ill.  
 Bunting, Barbara.....Port Hope, Mich.  
 Burgoyne, Bruce.....Route 1, Three Oaks, Mich.  
 Burket, Ruth.....Marcellus, Mich.  
 Burkman, George.....200 Peck, Negaunee, Mich.  
 Burkman, Richard.....7915 S. LaSalle, Chicago, Ill.  
 Burnett, James.....Montgomery, N. Y.  
 Burroughs, Ralph.....139 N. Genessee, Pontiac, Mich.

Cairns, Donald.....1100 Dunlap, Menominee, Mich.  
 Carter, Clarence.....4235 Hegner, Deer Park, Ohio

Carty, John.....5 Varnum, Worcester, Mass.  
 Catterson, Donald.....Pending  
 Chapman, Paul.....17432 Anglin, Detroit, Mich.  
 Chase, John.....1107 N. Capitol, Lansing 6, Mich.  
 Church, Lois.....846 Grace, Northville, Mich.  
 Clark, Benjamin.....Route 3, East Jordan, Mich.  
 Clark, Donald.....Route 4, Mason, Mich.  
 Clark, Lee.....129 Millview, Kalamazoo, Mich.  
 Clay, Charles.....7753 Kingston, Chicago, Ill.  
 Clements, William.....1800 Eleventh, Wyandotte, Mich.  
 Collier, Morris.....Route 1, Parma, Mich.  
 Collins, Robert.....639-6th, Traverse City, Mich.  
 Copeland, Joyce.....14574 Greenview, Detroit, Mich.  
 Cordes, Janet.....411 Eastown, Detroit, Mich.  
 Corston, Arthur.....  
 .....23256 Harvard Shore Dr., St. Clair Shores, Mich.  
 Caughlin, Gerald.....52 Dexter Rd., Lexington, Mass.

Daab, Philip.....Box 42, McArthur, Ohio  
 DeClarke, Russell.....15824 Steel, Detroit, Mich.  
 DeVirgilio, Enrico.....12560 Wilfred, Detroit, Mich.  
 Doerr, James.....Newton, Ill.  
 Draper, Harold.....1420 Owen, Saginaw, Mich.  
 Duquesnel, George.....  
 .....114 West 238th, New York 63, N. Y.  
 Dusek, Edward.....3701 S. Highland, Berwyn, Ill.

Eakin, Edwin.....  
 .....22622 Lake Blvd., St. Clair Shores, Mich.  
 Eastman, Hugh.....121 S. Main, Concord, Mich.  
 Eber, Ronald.....18537 Morang, Detroit, Mich.  
 Edwards, Elaine.....102 Wood, Charlevoix, Mich.  
 Edwards, Ruth.....102 Wood, Charlevoix, Mich.  
 Elliott, Philip.....501 Weller, Flint, Mich.  
 Ellis, Florence.....625 Union, Milford, Mich.  
 Ellis, William.....899 Longfellow, Detroit, Mich.  
 Ellsworth, William.....Buchanan, Mich.  
 Everest, Roger.....Route 1, Ithaca, Mich.

Farley, Frederick.....619 Quimley, Menominee, Mich.  
 Feagler, Agnes.....Edwardsburg, Mich.  
 Febel, William.....3598 West 120th, Cleveland, Ohio  
 Bolan, Fenzel.....609 Elaine, Hamilton, Ohio  
 Fischer, Albert.....101 East 217th, Cleveland, Ohio  
 Fischer, Kathryn.....15019 Evanston, Detroit, Mich.  
 Fitzgerald, Bernard.....1119 Eastward, Alma, Mich.  
 FitzPatrick, Helen.....9595 Pinehurst, Detroit, Mich.  
 Flanigan, George.....1139 Maple, Carthage, Mo.  
 Flaschen, Steward.....3653 Leland, Chicago, Ill.  
 Fortinto, Betty.....319 Gratiot, Alma, Mich.  
 Foster, Louis.....1801 McKinley, Bay City, Mich.  
 Frazier, Ralph.....414 Metropolis, Metropolis, Ill.  
 Friis, Clayton.....35 Sprague, Brockton, Mass.  
 Fuller, June.....910 N. Court, Alma, Mich.

Gibson, James.....1119 Bryden Rd., Columbus 5, Ohio  
 Gier, Berl.....655 S. Winter, Adrian, Mich.

Giere, John.....257 E. Rudisill Blvd., Fort Wayne, Ind.  
 Glenn, Lois.....19230 Derby, Detroit 3, Mich.  
 Gorham, William.....45 Park, Brandon, Vt.  
 Gauloze, Martin.....Route 3, Box 150, Sparta, Mich.  
 Gray, William.....126 Chester, Norfolk, Va.  
 Greene, Guy.....440 University Pl., Grosse Pte., Mich.  
 Greenquist, George.....15 Elm, Everett 49, Mass.  
 Groves, Hugh.....7106 Chase Rd., Dearborn, Mich.  
 Gudelman, John.....2309-7th, Los Angeles 16, Calif.

Haffenden, James.....  
 .....Route No. 5, Box 238, Battle Creek, Mich.  
 Hall, Eben.....418 Prospect, Grand Rapids, Mich.  
 Hamel, John.....9930 W. Outer Dr., Detroit, Mich.  
 Hamilton, Ian.....433 N. 24th, Battle Creek, Mich.  
 Hammond, Aritha.....126 Rockingham, Alma, Mich.  
 Hanrahan, John.....Wheeler, Deposit, N. Y.  
 Harden, Mary.....117 N. Audre, Saginaw, Mich.  
 Hartley, Betty.....714 Perry, Flint, Mich.  
 Hartsark, William.....4501 Lincoln, Shadyside, Ohio  
 Harvey, Robert.....Marcellus, Mich.  
 Hass, Norma.....Port Hope, Mich.  
 Hastings, Tracy.....3460 Iroquois, Detroit 14, Mich.  
 Hathaway, Dale.....Decatur, Mich.  
 Hawkins, Helen.....37 Broadway, Ecorse, Mich.  
 Heeney, Matthew.....1006 N. Ridgeway, Chicago, Ill.  
 Hempel, Simon.....404 W. Roe, Buchanan, Mich.  
 Hendershot, Harry.....409-2nd N.E., Massillon, Ohio  
 Hifton, Florence.....3035 Baldwin, Detroit, Mich.  
 Hight, Thomas.....18912 Fairfield, Detroit 21, Mich.  
 Hogue, Harold.....209-20th, Hopewell, Va.  
 Hopkins, Earl.....409 Bank, East Conneaut, Ohio  
 Hower, Richard.....507 Lincoln, N.W., Canton, Ohio  
 Hresko, Emery.....352 Stewart, Flint, Mich.  
 Hudson, James.....5950 Yorkshire Rd., Detroit, Mich.  
 Hunsicker, Mrs. G.....420 S. Jefferson, Ithaca, Mich.

Irwin, James.....10122 Calumet, Chicago, Ill.  
 Isaac, Helene.....3318 W. Blvd., Flint 6, Mich.

Jacob, Charles.....Route No. 2, Freeland, Mich.  
 Jacobs, David.....1907 S. "H," Bedford, Ind.  
 Jacques, Albert.....832-5th, Brockenridge, Pa.  
 Jillson, Gilbert.....Route No. 3, South Haven, Mich.  
 Johnson, Phyllis.....610 Gratiot, Alma, Mich.  
 Johnson, Marquis.....  
 .....67 Hanover Rd., Pleasant Ridge, Mich.  
 Jones, Margaret.....Warsaw, Ind.  
 Jones, Marian.....8539 Stony Creek Rd., Ypsilanti, Mich.

Kahn, Henry.....3127-76th, Jackson Heights, N. Y.  
 Karl, Paul.....514 Bell, Hollidaysburg, Pa.  
 Kemper, Barbara.....1409 McKinstry, Detroit 9, Mich.  
 Kiehl, Jack.....  
 .....2185 Bellfield Rd., Cleveland Heights, Ohio  
 Kikendall, Garth.....615 Commerce, Portland, Ind.  
 Kirk, Alvan.....19212 Canterbury Rd., Detroit, Mich.

Kocher, Virginia.....4443 Tireman, Detroit, Mich.  
 Koesterer, Joseph.....515 N. Jackson, Belleville, Ill.  
 Kostan, Charles.....3021 Algonquin, Detroit, Mich.  
 Krause, Keith.....Box 3, Newaygo, Mich.  
 Kreske, Walter.....95 Gilbert, West Haven, Conn.  
 Kyselka, William.....17 Portage, Highland Park, Mich.

Larson, Robert.....403 S. Niles, Paw Paw, Mich.  
 Lautner, George.....R.F.D. No. 4, Edwardsville, Ill.  
 Lewallen, William.....61 E. Philadelphia, Detroit, Mich.  
 Lombard, Frank.....3 May, Irvington, N. J.  
 Loomis, Charles.....38 Emerson, Utica, N. Y.  
 Lott, Joan.....Route No. 1, Tecumseh, Mich.  
 Lucas, Robert.....209 Summit, Petoskey, Mich.  
 Lull, Barbara.....386 Elmhurst, Highland Park 3, Mich.

McAuliffe, Lawrence.....  
 .....28335 Hampden, Royal Oak, Mich.  
 McBride, Kenneth.....524 Yale, Barberton, Ohio  
 McCarty, Marjorie.....505 Carroll, Saginaw, Mich.  
 McKinley, Joyce.....Gaylord, Mich.  
 McMahan, George.....7 Cottage, Holyoke, Mass.  
 Magee, Ottis.....Tylertown, Miss.  
 Majewski, Eugene.....20101 Klinger, Detroit, Mich.  
 Manis, John.....6021 S. Wolcott, Chicago, Ill.  
 Mannon, Rodney.....Paw Paw, Mich.  
 Manoogian, Carl.....8968 Petoskey, Detroit, Mich.  
 Marks, Floyd.....  
 .....935 Giddings, S.E., Grand Rapids, Mich.  
 Martin, Richard.....17132 Prest, Detroit 19, Mich.  
 Mason, Margaret.....3221 Lenox, Detroit, Mich.  
 Matheson, Donald.....3137 Mary, Grand Rapids, Mich.  
 Matters, Robert.....1103 Lincoln, Waukesha, Wisc.  
 Mattson, Marian.....819 E. Third, Royal Oak, Mich.  
 Mauch, Eugene.....555 N. German, Mayville, Wisc.  
 Meyer, Henry.....1140 N. Waller, Chicago, Ill.  
 Middleton, Amy.....17600 Fielding, Detroit 19, Mich.  
 Milhan, Mary.....604 Woodworth, Alma, Mich.  
 Miller, Burton.....1007 Welch Blvd., Flint, Mich.  
 Miller, Maxine.....286 Miller Rd., Sandusky, Mich.  
 Mills, Herbert.....13903 Tuller, Detroit, Mich.  
 Molyneux, Calvin.....312 E. Melendy, Ludington, Mich.  
 Mulloy, John.....Route No. 2, Box 30, Naperville, Ill.  
 Mulvihill, John.....955 Gladstone, Grand Rapids, Mich.  
 Mundell, Marilyn.....601 W. Ninth, Royal Oak, Mich.

Neelands, Alfred.....Clawson, Mich.  
 Nixon, Robert.....2590 Casper, Detroit 9, Mich.

O'Brien, Harrison.....  
 .....1140 W. New York, Indianapolis, Ind.  
 O'Leary, Edward.....14619 Grandmont, Detroit, Mich.  
 O'Malley, Robert.....  
 .....11863 Edgewater Drive, Lakewood 7, Ohio

Paleno, Eugene.....15868 Oak, E. Detroit, Mich.  
 Palmer, Walter.....1340 Lansing, Lansing, Mich.



Park, John.....1340 Bedford, Grosse Pte. 30, Mich.  
 Parson, Vera.....83 Seminole Ave., Pontiac, Mich.  
 Patton, W. Jane.....28219 Felician, Roseville, Mich.  
 Payette, Roland.....Loudon Road, Cohoes, N. Y.  
 Pecor, Charles.....12508 Maple, Blue Island, Ill.  
 Penwright, George.....15726 Quincy, Detroit, Mich.  
 Peterson, Carol.....208 Hastings, Alma, Mich.  
 Peterson, Earl.....Breckenridge, Mich.  
 Peterson, Lester.....R. R. No. 2, Dunkirk, Ind.  
 Pitcher, Robert.....McBrides, Mich.  
 Place, Naomi.....422 E. Downie, Alma, Mich.  
 Plauman, Harold.....318 West Grove, Greenville, Mich.  
 Porath, Ervin.....3324 Rust, Saginaw, Mich.  
 Pratt, Elizabeth.....Traverse City, Mich.

Reinker, Ralph.....16712 Seneca, Lakewood, Ohio  
 Richer, Robert.....2415 Eastwood, Chicago 25, Ill.  
 Richter, Betty.....5567 Beaconsfield, Detroit 24, Mich.  
 Richter, Emma.....11845 Walter, Mt. Morris, Mich.  
 Rock, Robert.....15509 Heyder, Detroit 23, Mich.  
 Rohrer, Thomas.....7835 S. Winchester, Chicago, Ill.  
 Rosendale, Martha.....Crystal, Mich.  
 Rosenthal, Garry.....18902 Winthrop, Detroit, Mich.  
 Rowe, Lawrence.....19150 Snowden, Detroit 21, Mich.  
 Rowell, Catherine.....Millington, Mich.  
 Ruppel, Edward.....218 Edmund, Flint, Mich.  
 Rutherford, Edwin.....14265 Mayfield, Detroit, Mich.

Sauble, Earl.....8517 Rosewood Dr., Bethesda, Md.  
 Schmidtman, Donald.....  
 .....204 N. Oakland, St. John, Mich.  
 Schoenfeld, Joseph.....4120 Heyward, Cincinnati, Ohio  
 Schwartz, Herbert.....55 North, Hamden, Conn.  
 Schwartz, John.....Londonville, Ohio  
 Seger, Robert.....17712 Cooley, Detroit, Mich.  
 Sempstrott, Glenn.....12387 Greenlawn, Detroit, Mich.  
 Setz, Richard.....411 Woodruff, Aurora, Ill.  
 Sevier, Jacqueline.....4338 Monroe, Ecorse, Mich.  
 Shaffer, James.....908 N. Farragut, Bay City, Mich.  
 Shaw, Donald.....9 Bacon Ct., Bronxville, N. Y.  
 Shaw, Ruth.....9363 Marlowe, Detroit, Mich.  
 Shelp, Robert.....204 S. Highland, Aurora, Ill.  
 Shuler, Albert.....1022 Smith St., Flint, Mich.  
 Shumaker, William.....  
 .....1321 Sunnyside Dr., Kalamazoo, Mich.  
 Shutes, Robert.....16860 LaSalle, Detroit 21, Mich.  
 Sinclair, Sidney.....Holloway, Mich.  
 Slaski, Jean.....517 Ely, Alma, Mich.  
 Slyfield, June.....315 Walnut, Alma, Mich.  
 Smith, Betty.....624 Wright, Alma, Mich.  
 Smith, Carl.....700 W. Nudland, Bay City, Mich.  
 Smith, Phyllis.....2405 Ashman, Midland, Mich.  
 Snively, George.....46 Brevoort Rd., Columbus, Ohio  
 Spadafore, Eleanor.....Three Rivers, Mich.

Spry, Richard.....5602 Drexel, Chicago, Ill.  
 Sterling, Stanley.....Greenbush, Mich.  
 Feeser, Yvonne.....909 State, Alma, Mich.  
 Stonehouse, Jack.....328 London Rd., Sarnia, Ont., Can.  
 Stowell, Sheldon.....30 W. Chicago, Coldwater, Mich.  
 Strawman, Ernest.....68 Academy, Malone, N. Y.  
 Stuart, Ellen.....524 State, Alma, Mich.  
 Stuart, Helen.....524 State, Alma, Mich.

Taylor, William.....R. R. No. 4, Aledo, Ill.  
 Thompson, John.....1035-21st, Santa Monica, Calif.  
 Tobin, Anna.....611 Center, Alma, Mich.  
 Towne, James.....701 Britten, Lansing, Mich.  
 Townsend, Theodore.....18 Stafford, Waterville, N. Y.  
 Toy, William.....963 Second, Muskegon, Mich.  
 Traphagan, Edwina.....Linden, Mich.  
 Trezise, David.....1201 Pierce, Wakefield, Mich.  
 Trueman, Jean.....13010 Glenfield, Detroit, Mich.

Uhlman, Robert.....703 Lee, Owosso, Mich.  
 Urquhart, James.....329 Highland, Detroit, Mich.

Valade, Robert.....644 Rivard Blvd., Grosse Pte., Mich.  
 Van Osdol, Nathan.....  
 .....1047 Yorkshire Rd., Grosse Pte., Mich.  
 Vaughan, Dorothy.....211 W. 7th, Traverse City, Mich.  
 Vetter, John.....509 Elton, Riverhead, N. Y.  
 Vlasic, Robert.....1052 Devonshire Rd., Detroit 30, Mich.  
 Volgyes, Paul.....47741 Harris Rd., Belleville, Mich.

Wadley, Geraldine.....508 Eleanor, Saginaw, Mich.  
 Wanty, Thomas.....  
 .....976 Cambridge Blvd., Grand Rapids, Mich.  
 Watson, Margaret.....2989 Western, Detroit, Mich.  
 Watt, James.....Qts. 47-A, No. Area, Great Lakes, Ill.  
 Wauchek, Nancy.....Gobles, Mich.  
 Webster, Francis.....639 Townsend, Detroit, Mich.  
 Welaoss, Betty.....15019 Evanston, Detroit, Mich.  
 Welsford, Berdella.....R. R. No. 2, Alma, Mich.  
 Wendland, Robert.....1846 McKinley, Bay City, Mich.  
 Wernecke, Heinz.....2217 Hiland, Saginaw, Mich.  
 Whiting, Elizabeth.....Standish, Mich.  
 Wilhelm, Thomas.....2444 Andrus, Hamtramck, Mich.  
 Williams, Thomas.....99 Spring, Oberlin, Ohio  
 Wilson, Nettie.....28557 Fairfax, Roval Oak, Mich.  
 Wilson, Richard.....905 E. 70th St., Cleveland, Ohio  
 Winship, Jean Ann.....Alba, Mich.  
 Wolbers, Ralph.....230 S. Third, Saainaw, Mich.  
 Wolfe, Robert.....429 Fairwood, Columbus 5, Ohio  
 Wunderlich, Marjorie.....  
 .....18935 Parkside, Detroit 26, Mich.

Zachman, John.....508 W. Front, Perrysburg, Ohio  
 Zaremba, Theodore.....8950 Portland, Detroit, Mich.  
 Zimmel, Louis.....12795 Pinehurst, Detroit, Mich.

## COMPLIMENTS OF

VARSITY SHOP, BOOKS AND ATHLETIC  
GOODS

LEONARD REFINERIES, INC.

ALMA TRAILER CO.

FIRST STATE BANK

ALMA STATE SAVINGS BANK

STOVAL STUDIO AND CAMERA SHOP

CONSUMERS POWER CO.

DOUD DRUG STORE,  
MR. AND MRS. BURNS

STATE RESTAURANT, STEVE JOHN

SIMI'S RESTAURANT

SAWKINS—MUSIC, FURNITURE, RECORDS,  
AND GIFTS

STAR DYERS AND CLEANERS

ALMA CITY DRY CLEANERS

GITTLEMAN STYLE SHOPS

COMPTON DRESS SHOP

W. B. BALTZ STORE

ALMA DAIRY

CAPLES FLOWER SHOP

CHURCH JEWELRY

DICKINSON'S DRUG STORE

WRIGHT HOTEL,  
MR. AND MRS. E. P. McCLURE

THE LITTLE STORE, REN AND BELLE

ROSLUND GULF SERVICE

J. P. SCHNEIDER AND SON

H. J. STORE,  
QUALITY MERCHANDISE FOR LESS

MAPES HARDWARE, CLIFTON A. MAPES, '36'

MR. WEWHINNEY

DICK'S PACKGE STORE

VAN'S WALLPAPER AND PAINTS

NOVELTY GIFT SHOP

H. J. BICKERT CO.

NELSON'S SHELL STATION

J. A. GILES, TIRE RE-CAPPING

ALMA RECREATION, U. G. CASE

PACKARD'S FURNITURE STORE,  
COMPLETE HOME OUTFITTERS

STRAND THEATER

ALMA THEATER

AUTOGRAPHS

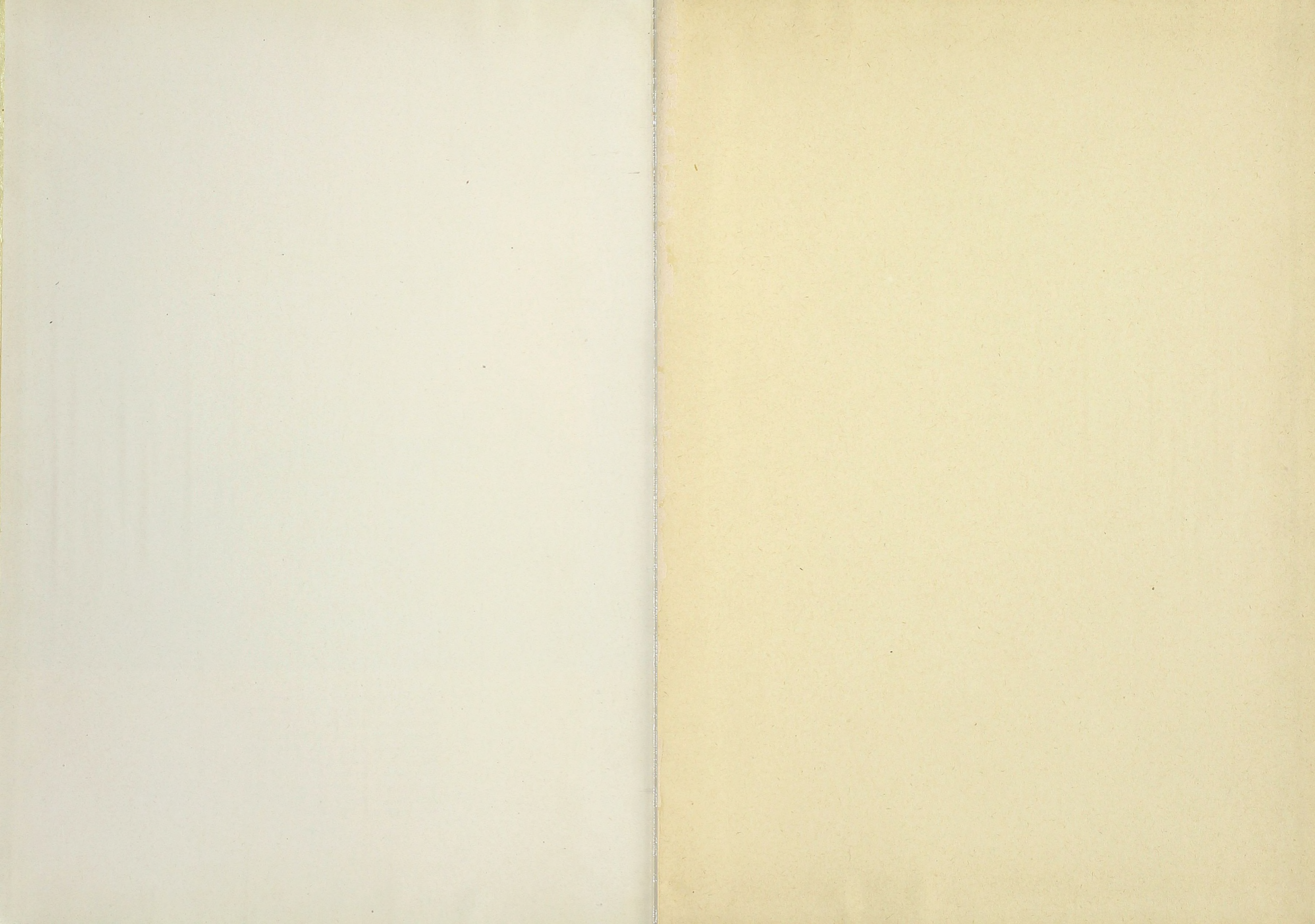
"BIG SHOTS ON THE CAMPUS"

"SMALL SHOTS ON THE CAMPUS"



Flag of the seas! on ocean wave  
Thy stars shall glitter o'er the brave  
When death careening on the gale  
Sweeps darkly round the bellied sail  
And frightened waves rush wildly back  
Before the broadsides reeling rack,  
Each dying wanderer of the sea  
Shall look at once to heaven and thee,  
And smile to see thy splendors fly  
In triumph o'er his closing eye.

*Joseph Drake*



ALMA COLLEGE LIBRARY



3 3190 00416 6203

