

**SCOTSMAN**  
**1946**

Alma College  
Library

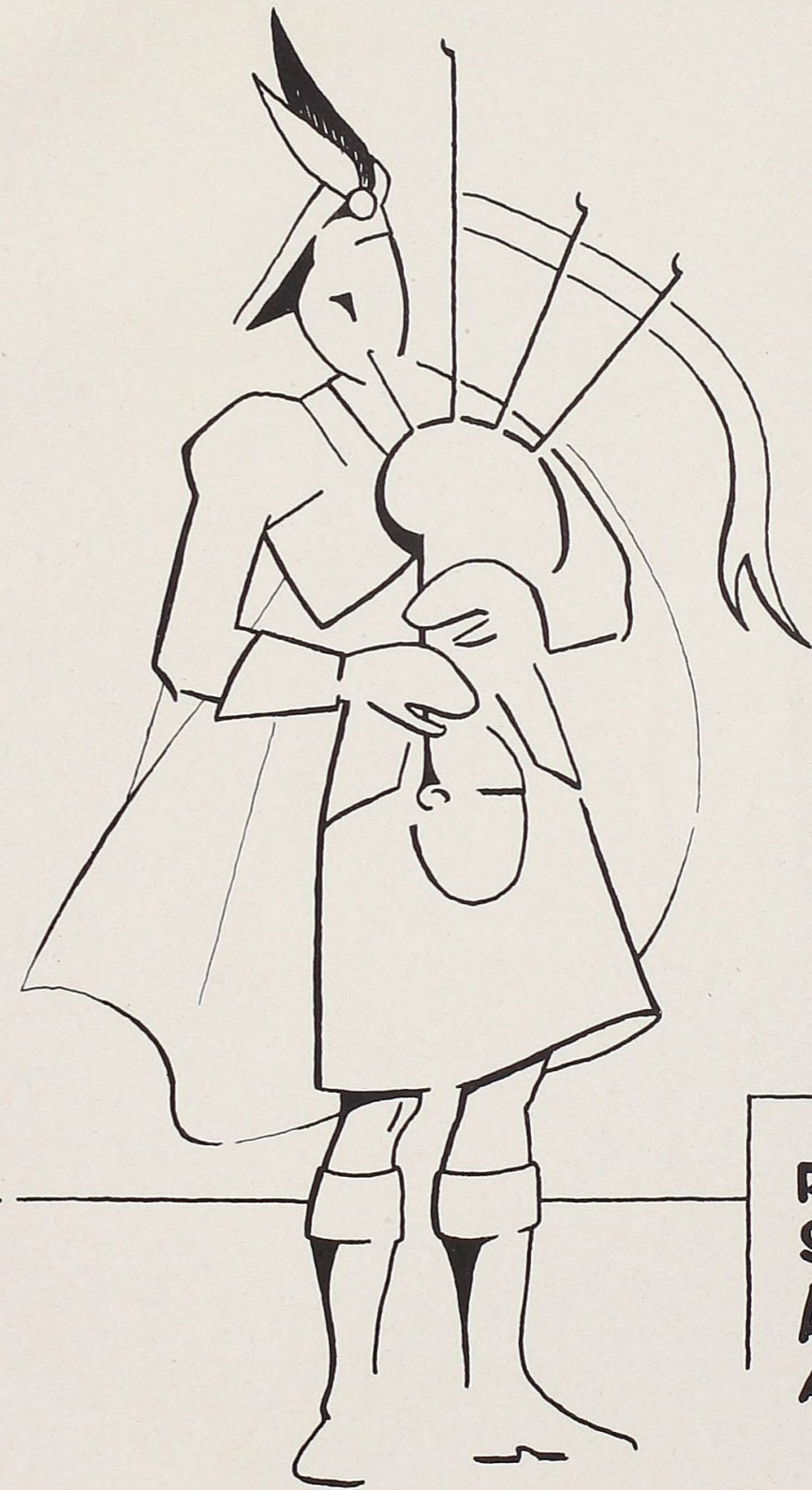


Ref.  
LD  
131  
.A612  
1946  
52680





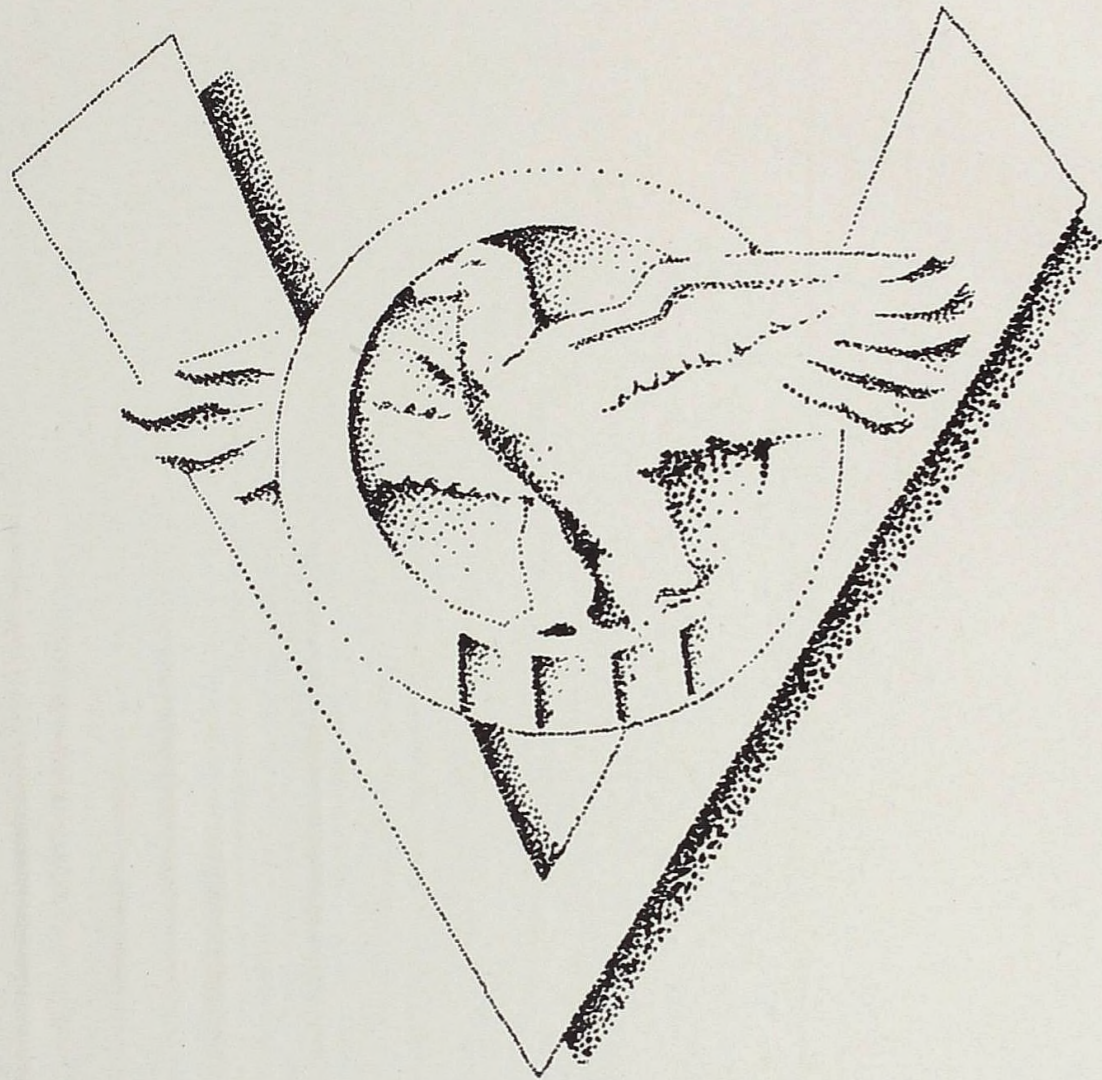
*"Loyal Hearts Will Cherish Ever"*



1946

PUBLISHED BY  
STUDENTS OF  
ALMA COLLEGE  
ALMA, MICH.

SCOTSMAN



*The war is won,  
 The battle's done,  
 Men are returning  
 One by one.  
 They return with great humility,  
 For they've seen so much brutality.  
 They've laid down their weapons of death and war,  
 They'll forget the lessons they learned before,  
 They'll open their minds to the ways of peace,  
 Their peace lives start and their war lives cease,  
 So fling we wide the gates of welcome.  
 And open our doors of knowledge,  
 We welcome all the servicemen,  
 Back to Alma College.*

— By Peggy Powers.

Ref.  
 LD  
 131  
 .AG12  
 1946



Loyal hearts will cherish ever  
 Thoughts of thee throughout the years  
 Pledging thee a fond devotion,  
 Guardian of our hopes and fears.

Memory holds a cherished picture  
 Jungle, grove and campus fair;  
 Sons and daughters ever faithful  
 Hail thee one beyond compare.

Alma! Alma! Sing of Alma Mater:  
 Thy Loyal Children  
 Chant Thy Hymn of Praise.



## “...Thoughts Of Thee...”

Through the courtesy of the editors of the Scotsman the President of Alma College has the opportunity to survey the interesting events of the college year from the administrative viewpoint and to comment briefly on the significant features of the college year.

When the Navy V-12 unit left the campus on October 20, 1945, Alma College again returned to civilian status and instituted its normal two-semester college year. The good ship Wright became Wright Hall once more, and the women of the college, augmented by a large group of entering new girls, returned to their beloved dormitory, which in miraculous fashion had been prepared in ten days for their coming. Pioneer returned to its staid status as a men's dormitory and the President's House, in addition to serving as the home of the growing department of Home Economics, became the haven of our women teachers who formerly lived in Bruske House. The spirit of the Alma College family has been excellent. The veterans, who are reaching our campus in increasing numbers, evidence a seriousness of purpose and a desire to make every hour of college study count in preparation for their chosen careers.

The faculty changes during the year have been few. With the coming of Dr. Paul Rice as Dean of the Faculty and head of the Department of Biology, our teaching personnel has been greatly strengthened. As an instructor in the department of Religion, Professor E. E. Baker, of Chicago, began his work in the fall and has added to his numerous teaching duties the supervision of the Chapel program and the Alma Christian Fellowship. Mrs. Gaumer was obliged to leave her work in physical education for women, but Mrs. Hazen Cole has substituted in this field with marked success. Students and teachers are rejoicing in the return from Navy service of Professor Westley Rowland of the department of Speech, who has been away from the campus for almost two years. Mr. William LaPaugh is to act as laboratory assistant to Doctor Rice in the Department of Biology. With a larger student enrollment, several departments will need an enlarged teaching staff.

The many student organizations have played their part well in making the campus life happy and contented. From the Cooperative Council to the Student Council and the Woman's Senate, the student body has given time and energy to the solution of many problems. Their advice and counsel have been uniformly helpful.

The temper of a liberal arts college of the type of Alma ought to be gauged by the religious spirit and work of faculty and student body. No formal exercises can measure that spirit. Attendance at chapel and enrollment in courses in religion are helpful, but the voluntary expressions of religious life are best found in the Alma College Christian Fellowship, the College Bible Class, and the many service outlets through leadership groups and committees. Such group commitments to the spirit of Christ give value and meaning to the term "a Christian College".

With the beginning of the second semester the college enrollment has risen well above the three hundred mark, with a crowded campus in prospect for the fall. Many veterans, formerly in college, are returning to their Alma Mater and new students, men and women, are already enrolling for the coming year. With such increases in prospect, the goal of 500 students, a figure set as a norm for Alma College, may be reached during the coming year. If so, a program of expansion in the teaching force and in the erection of new buildings will be necessary.

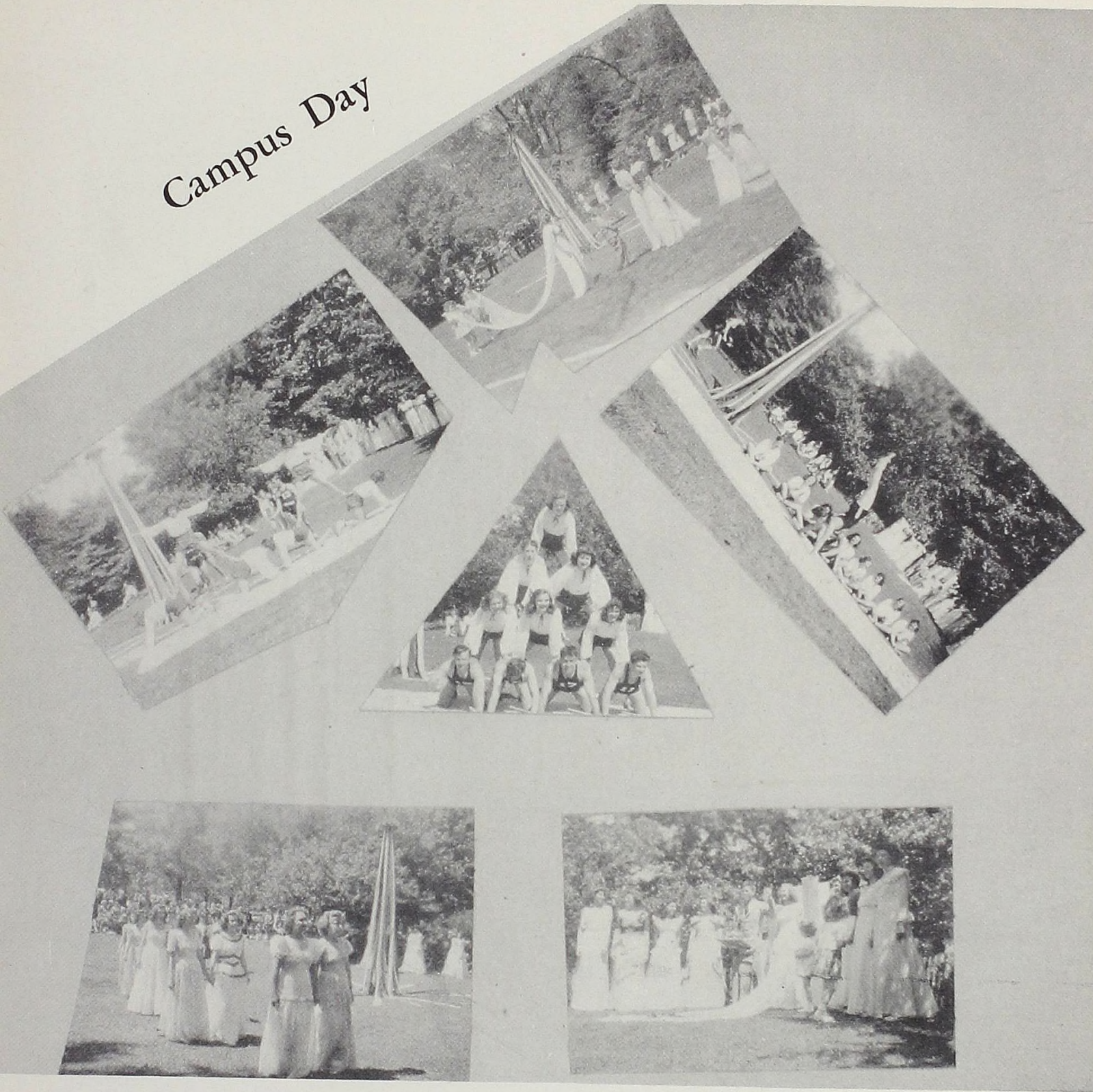
The Synod of Michigan, after a thoughtful consideration of the program of the Christian Service Center for Alma College, approved the plan in principle, but asked a representative committee to analyze the recommendations and report back to Synod this coming fall. When the Christian Service Center comes into being, Alma College will enter into a greatly expanded field of service in the interests of the church of Christ.

No survey would be complete without reference to the cooperative efforts of many whose work, quietly and efficiently performed, made possible advances in our college program. The president's secretary, Mrs. H. O. Abernethy, ably supervised the many administrative details of the college office. In the business area, Mr. Peterson, Mrs. Metheany and Mrs. Maxwell rendered their usual courteous and helpful service.

Alma College proposes to build soundly for the future on the twin foundations of true learning and Christian nurture. Our Alma Mater hopes to send into communities, large and small, young people adequately trained as Christian citizens to meet the many perplexing problems presented by the postwar world.

*Roy W. Hamilton.*

# Campus Day



The Campus Day of 1946 is yet to come. On May 22 all classes are suspended while faculty and students celebrate the coronation of the May Day Queen of Scots. This is a day of recreation for both faculty and student body, beginning at 9:00 a. m., with the final play-off in the men's softball tourney.

At 10:00 a. m. the girls Inter-sorority and Independent teams will play their final game. From all appearances the Independents will be defending their Scottie, given to the winning team each Campus Day.

After dinner in the Grove and music, the coronation program begins with a procession, daisy chain, "Highland Lassies", waltzers, queen's court and finally the queen in her flowing gown and train. Ben Clark, president of the Student Council, has the honor this year of crowning the queen.

More highlights include the Soph-Frosh tug o' war over Pine River, a sundown song fest on the Chapel steps, and an all-college informal dance on the tennis court.

# ACTIVITIES



The postwar era has found the social life of Alma College very active. The newly founded Vet's Club, the three sororities, the Christian Fellowship, and the two fraternities sponsored many parties and dances which rounded out the social life on the campus. The big dance of the first semester was the Frosh Frolic, sponsored by the freshman class. It was held in the gym and offered Don Faught's orchestra for the musical media. The Veterans offered a taxi dance with a novel turn in which the girls paid for their dancing partners. Other big dances of the year were the Club AQ dance by the Alpha Thetas, the Amo Te Valentine dance of the Sigma Philos, the Kappa Iota South American Swing, and the Monte Carlo by Delta Gamma Tau.

Besides their open parties, traditional closed parties were held by the sororities and fraternities. The Phi's reorganized their fraternity and took over the Phi house the second semester. The Delt's reconditioned and moved back into their house. Sororities again moved into their rooms and have fervently redecorated them. Pledging and rushing was regulated for the three sororities and the two fraternities by the inter-sorority council and inter-fraternity council, respectively, by representatives from each society and respective Deans.

The students' voice again resounded in the Student Council, through which plans have been made to set aside an area of the Jungle as the Hans Richter Memorial Park in honor of our late beloved professor. Also carrying out student government were the Community Committees, the Women's Senate in Wright Hall and the Men's Senate in Pioneer. The latter organizations made special efforts to enlarge and better the recreational facilities in their dorms and to maintain a high sense of a democratic spirit and action.

With the return of many former students, the pre-war intra-mural spirit among both men and women, became active. Several teams were organized and scheduled tournament play-offs in basketball, ping-pong, and baseball. The women's organization, W. A. A., scheduled a play day for the girls of Central State. Teams in volleyball and basketball visited Central State; and they also took part in the Women's M. I. A. A. play day at Adrian.

The famed A Capella Choir made several short trips and its regular spring tour to several cities in the state. The regular Wednesday afternoon recitals were held by the music department. Christmas spirit was reinforced by the annual Christmas concert which lived up to all expectations. The Sextet, renown throughout Michigan, gave several good-will concerts and made many guest appearances.

Revived in the second semester, the Tau Kappa Alpha speech organization entered the Michigan Inter-Collegiate prose and poetry contests and the amateur debate contest. It is laying the foundations for a very active 1946-47 term.

Reaching its all-time high, the Religious Life group planned a spiritual emphasis week in March, built up its numbers, organized a college Bible Study class on Campus and sponsored the Christian Fellowship which meets every Sunday evening to discuss the importance and place of religion in every day life of the individual, group, nation and world.



## Student Council

The Alma College Student Council successfully completed its twenty-seventh year of service on the Alma College campus. Organized in 1919-1920, the objects of the Council as set forth in the constitution are:

1. to provide an effective means of communication between the student body and the college authorities.
2. to interpret and maintain college traditions and customs.
3. to exercise a general supervision over the student activities, organizations, traditions, customs, and all conduct.
4. to crystallize and make more effective the most worthy of student opinions.

Membership on the Council is of two kinds: elective and appointive. There are eleven elective members: four members are elected from the senior class, three from the junior class, two from the sophomore class, and one from the freshman class. If, in September of the year for which the Council is to serve, it is found that any of the six campus fraternities or sororities is not represented on the Council, that group appoints one of its members to represent it for the year. The appointive members have full and equal standing with the elective members. Thus the membership of the Council may vary from eleven to twenty-two. This year there were eleven members.

The Student Council this year has promoted many functions: they sponsored the open Recreation Room on Friday nights, one mixer each semester for new freshmen, complimentary dances after the basketball games, and Thursday student chapel programs.

Most important social activities sponsored by the group are the Campus Day activities and the All-college formal both in May. They also sent flowers to the kids at Hurley and they represent the student body on the Co-op Council. The Council assisted the Youth Fellowship with their hayride and purchased equipment for Wright Hall Recreation Room.

The officers for this year are:

President	- - - - -	Ben Clark
Vice-President	- - - - -	Al McCuaig
Secretary	- - - - -	Marge Wunderlich
Treasurer	- - - - -	Barbara Kemper

Members are:

Ben Clark, Marge Wunderlich, Al McCuaig, Barbara Kemper, Janet Cordes, Jean Rosendale, Frank Spadafore, Elizabeth Whiting, Don Montgomery, Jean Patterson, Jus McCarty.



## Women's Senate



Row 1—Carol Dengler; Jean Rosendale, Secretary; Marjorie Wunderlich; Ruth Edwards, President; Betty Ellis.  
 Row 2—Patricia Atkins, Helen Collins, Ellen Angell.  
 Row 3—Nan Harden; Peggy Powers; Elizabeth Whiting, Social President; Carroll McLeod.

## Youth Fellowship

### NEW OFFICERS

President - - - - Joan Brett  
 Vice-President - - - Eda Pollock  
 Corresponding Secretary - Betty Snow  
 Recording Secretary - Betty Adams  
 Treasurer - - - - Harold Smith

Beginning the year under the ambitious leadership of Mr. Elmer Baker, the Youth Fellowship has organized more committees and has become more active.

The Youth Fellowship tries to bring a spiritual feeling to the students. Fellowship is a group for the students, and it enables them to show their abilities as Christian leaders and to use their talents.

The officers of Youth Fellowship are: President, Dave Sanborn; Vice-President, Pat Atkins; and Secretary and Treasurer, Marian Mattson.

This year a new system of six committees in fellowship is being tried out. The six committees and chairmen are: worship committee, chairman, Betty Hartley; Christian-social responsibility committee, chairman, Bob Nixon; community service committee, chairman, Pat Carter; fun and fellowship committee, chairman, Marian Mattson; the publicity committee, chairman, Joan Brett.

Each one of these committees has a certain duty to perform. The worship committee is responsible for planning worship services; the Christian-social responsibility committee is responsible for program planning; the community service committee gives the members of fellowship a chance to serve the community in a Christian way. The world campus committee is interested in becoming informed about student groups throughout the world and in the world interest student fund; the fun and fellowship committee plans the recreational activities for the group and refreshments. The publicity committee publicizes fellowship by making posters and informing everyone about the programs.

Fellowship is an organization for Christian young people and it enables them to become better Christians and good leaders.





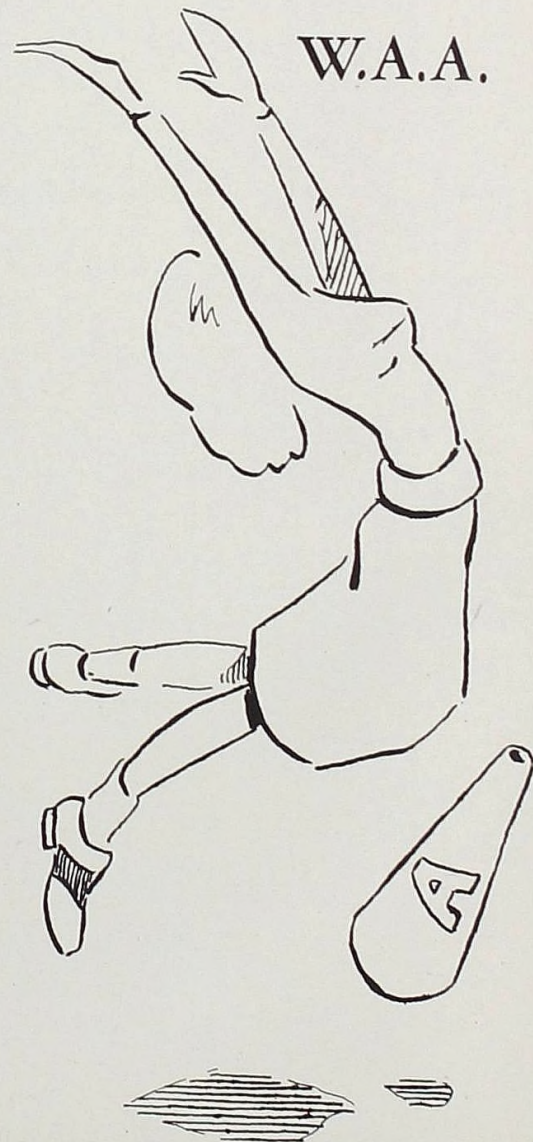
Alma College is proud of its Women's Athletic Association, an organization including all college women. Its purpose is to promote athletic interests, to foster the ideal of good sportsmanship and to create a love for sports.

Each year W. A. A. plans a bang-up program starting with the annual fall mixer. Before the Christmas Holidays all the women faculty and students gathered at the home of the president of the college for the Christmas Chocolate, one of the many occasions bringing faculty and students closer together in the friendly spirit which reigns on the college campus. Co-Rec. night in the gym is another of the many events sponsored by W. A. A. Both men and women gather in the gym for an evening of mixed activities. The annual spring Banquet is the last and most impressive event sponsored by W. A. A. At this banquet, awards are presented to outstanding girls in the field of athletics.

The outstanding Freshman girl receives a bronze medal for outstanding participation. Sophomore and Junior girls, who are eligible, may receive the maroon letter "A". The Senior Girl, most outstanding in all four years, is presented with the Senior Award. Selection of eligible students is made on an honorary basis.

Our W. A. A. is proud to be a member of the American Federation of Michigan College Women—an organization represented by several other M.I.A.A. Michigan colleges. Each year the physical education director and one student representative attend a meeting, at which time a tentative date is set for the annual tennis tournament and play day. Olivet College is to be host at the tennis tournament in May and Alma is to be host at the play day at the beginning of the next fall term. These events were dropped during the war, but now that the transportation problem has ceased, the meetings have been resumed.

Tournaments, inter-sorority independent softball games, inter-collegiate volleyball, softball, and basketball games, social activities, etc. are only a few of the many activities which make Alma's W. A. A. one of the most active organizations on campus.



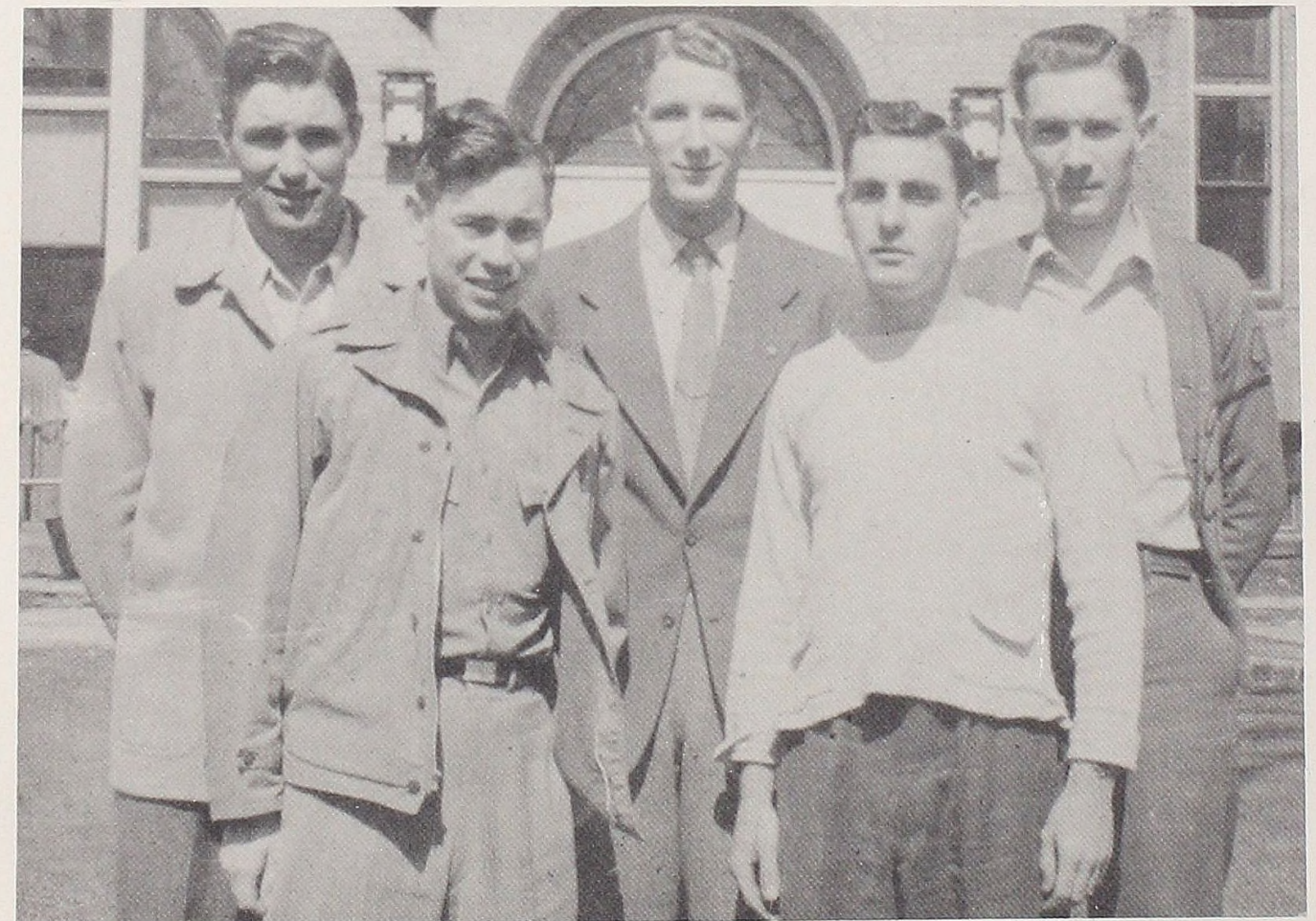
## Vet's Club

The fall term of 1945 saw the beginning of a new organization on the Alma campus. Twenty-four World War II veterans decided to organize and form the Alma College Veterans Club. As the term progressed, and as more veterans entered college, the club enlarged until it now numbers ninety-eight.

Aiming to preserve and strengthen good fellowship and to help the veteran adjust himself to civilian life, became the ideals for which the club stands. All members of the club do

their utmost to live up to their ideals, and they are ably lead by Al McCuaig, President; Frank Spadafore, the Vice-President; Pete Greenhoe, Secretary; and Jus McCarty, Treasurer.

In following the ideals, the club has planned a full social program. It's first function, the Taxi Dance, was very successful, and the club has planned a full schedule this spring, including an all-college formal dance, and a closed mixer to introduce the newest members.



## Almanian

Under the leadership of co-editors Eddie Edwards and Flossie Lifton and Business Manager Ruth Shaw, the Almanian has completed another successful year as the bi-monthly publication of Alma College.

Many successful changes were made in the production of the school paper this year. Columns originally started while the Navy V-12 Unit were at Alma were discontinued, and new articles to cover the news of Alma's civilian student body were added. Lighter news from the different dorms were compiled into one "Sweepings" column, the third page made exclusively a Sports page, and changes made in the general layout of the entire paper.

Editors Edwards and Lifton were assisted by an able staff of twenty reporters; Bill Cornwell, Sports Editor; Ruth Edwards, Circulation Manager; and Prof. Herman W. Spencer, Faculty Advisor. All these, together with guidance and cooperation of the Alma Record, gave the college its student publication.



### Editors

Eddie Edwards  
Flossie Lifton

### Business

Ruth Shaw, Mgr.  
Joan Lott  
Betty Lyberg  
Chuck Watson  
Barbara Girvan

### Circulation

Casey Edwards, Mgr.  
Pat Pilson  
Eda Pollock

### Reporters

Bill Cornwell, Sports Editor  
Peg Powers  
Mike Black  
Marian Mattson  
Norma Pinkerton  
Betty Hartley  
Joan Brett  
Amy Middleton  
Chuck Watson  
Nan Harden  
Virgie Kocher  
Ralph Wolbers  
Dave Sanborn  
Putt Smith  
Larry Rowe  
Ruth Edwards  
Howard Smith  
Ed Bathum  
Virginia Buck

## Scotsman



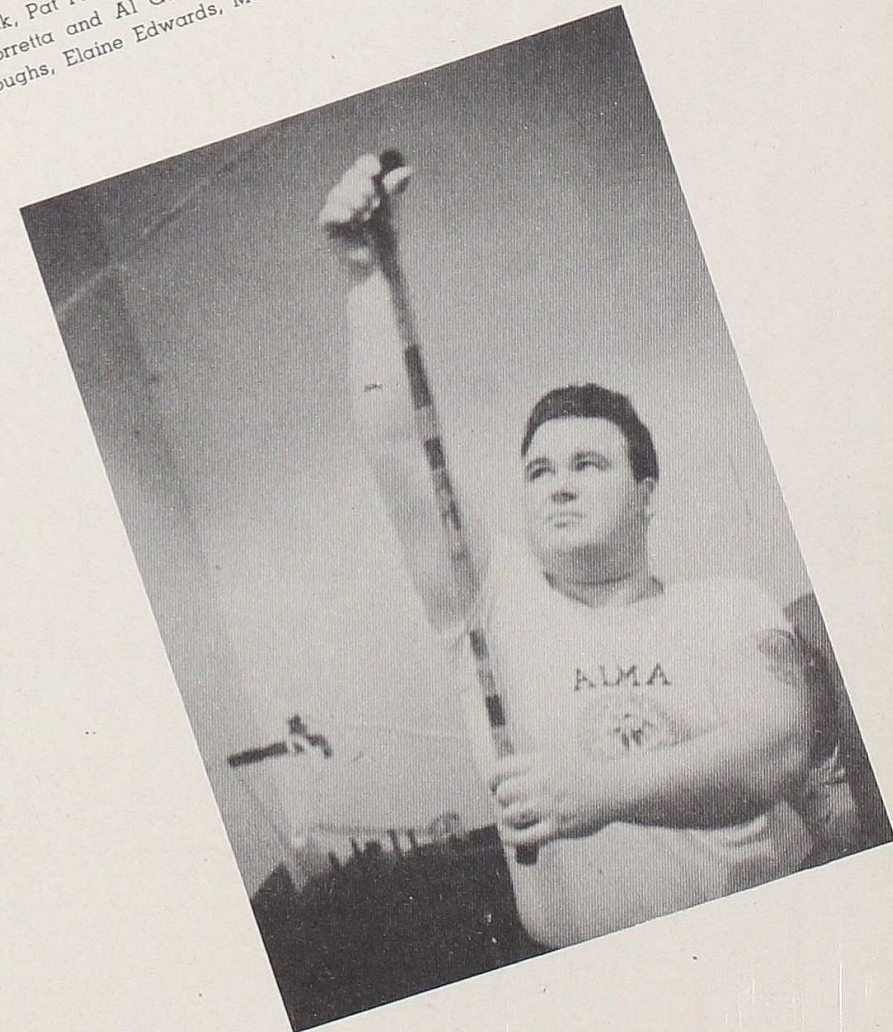
Ruth Edwards, Editor and Layout; Eda Pollock, Pat Pilson, Assistant Editors; Don Converse, Art Editor; Glenn Sempsrott, Business Manager and Head Photographer; Louis Porretta and Al Goodrich, Photographers; Wally Moore, Assistant Business Manager; Ralph Wolbers, Picture Pages; Ralph Burroughs, Elaine Edwards, Marge Wunderlich, Peggy Powers, Bill Cornwall, Bud Savage, Reporters.

Being chosen editor-in-chief of The Scotsman for a second try was not an honor. It was an opportunity! The honor, rather, depends on how well the job was done and whether the new book shows improvement over last year.

Hoping to achieve this, I have tried to incorporate into this year's book the features which the majority of the students indicated. I have tried to make the book as informal as possible without sacrificing the final degree of dignity which belongs to a college publication. It is also for this reason that I have laid stress on pictures, believing in the old Chinese proverb that "one picture is worth ten thousand words".

At this time, I'd like to thank by wonderful staff, especially Eda Pollock, Pat Pilson, Glenn Sempsrott, Ralph Wolbers, Don Converse, Al Goodrich, and "Jug" Porretta. Without their help the annual would never have seen the press. I also want to thank all of you—faculty and students—for the fine cooperation you have shown and for your snapshots which after all give the decided interest peak to the Scotsman.

Ruth Edwards.





## Inter-Fraternity Council

The Inter-fraternity Council was re-organized the last week of the first semester with three members each of the Delts and the Phi's. The Zetas since their reorganization, also have three members.

The members are:

Delt President, Ben Clark; Howard Smith, Louis Kohler.

Phi President, Frank Spadafore; Roger Everest, John Miller.

Zeta President, Al McCraig; John Burns, Hank Ousterhout.

Ben Clark and Frank Spadafore are co-chairmen and Howard Smith acts in the capacity of secretary.

As stated in their constitution the Inter-fraternity Council has a three-fold purpose:

1. To promote cooperation and good feeling between the three fraternities;
2. To settle any differences between the fraternities;
3. To outline rushing and pledging procedures.



It has been said that the value of a college education is not determined by the amount of acquired book learning alone, but also by the associations and friendships made. Fraternity life supplies these important and cherished associations and friendships.

Rich in the traditions of forty-five years of life on the Alma Campus, Phi Phi Alpha has earnestly endeavored to live up to its name which, translated, means "Affectionate Brothers of Learning".

Organized in 1898 as a Literary Society, Phi Phi Alpha continued until 1926 when it was transformed into a fraternity. Suspended in 1943 for the duration of the war, the fraternity was reorganized in January, 1946, by a group of returning students, Frank Spadafore, Roger Everest and Floyd McMillan. Meetings were held in the Phi House, officers elected, and new members pledged.

Social activities began with a closed rushing party in March for fifteen prospective pledges at the Phi House. An open party, the successful Barbary Coast Dance followed, March 16, and a formal dinner dance was given May 25.

The Phi Phi Alpha men hold many of the important offices of the campus. Reporters for the Almanian and Scotsman, members of the Student Council, the president of the Sophomore class and M. I. A. A. representatives all are men of the Phi Phi Alpha.

Men of the Phi Phi Alpha have gone out into the world to take their places in all walks of life. Some have entered the ministry, some have chosen teaching as their profession, and others are doctors, lawyers, dentists and business executives. Whatever their place in the World, men of the Phi Phi Alpha have carried with them the traditions and the high morals that are an integral part of the Phi Phi Alpha and the Alma College.

P  
H  
I  
  
P  
H  
I  
  
A  
L  
P  
H  
A



Delta Gamma Tau, established in 1939, is the newest fraternity on the campus and the only active fraternity during the war years. Delta Gamma Tau has pledged itself to promoting the highest moral, social and intellectual ideals, and to furthering a friendly spirit between all organizations of Alma College. Its influence is felt in every phase of campus life.

Its members are among the leaders in many school activities. Ben Clark is president of the Student Council; and Tiny Sempsrott, student manager of basketball and business manager of the Scotsman, are two such examples. Delt boys also participate in football, basketball, softball, choir and oratory.

With the return of former members and the pledging of new ones, the fraternity is running in high gear. They have moved into their house at 603 West Center street.

The Monte Carlo was classed as one of the most successful dances of the year. A spring formal, smokers and closed parties will wind up their social life.

The "baby fraternity" has had a lusty start. It can confidently look forward to a very promising future.

OFFICERS

- President - - - - Ben Clark — Ben Clark
- Vice President - Tiny Sempsrott — Ralph Burroughs
- Secretary - - - - Bob Nixon — Bob Nixon
- Treasurer - - - - Bob Nixon — Doug Holland
- Pledge Master - - Larry Rowe — Tiny Sempsrott
- Chaplain - - - - Ralph Burroughs — Larry Rowe
- Sergeant-at-arms - - - - Howard Smith

Delta  
Gamma  
Tau



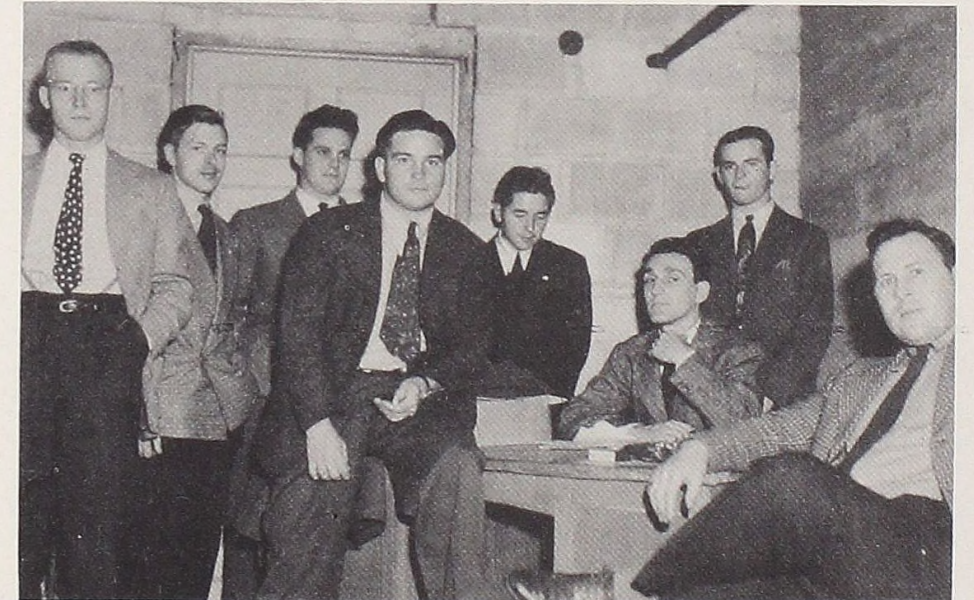
OFFICERS

- President - - - - Alfred McCuaig
- Vice-President - - - - Donald Tobey
- Recording Secretary - Henry Osterhout, Jr.
- Corresponding Secretary - Sinclair Ingham
- Treasurer - - - - John Burns
- Master-at-Arms - - - Frank Navarre
- Keeper-of-Archives - - Charles Kegel

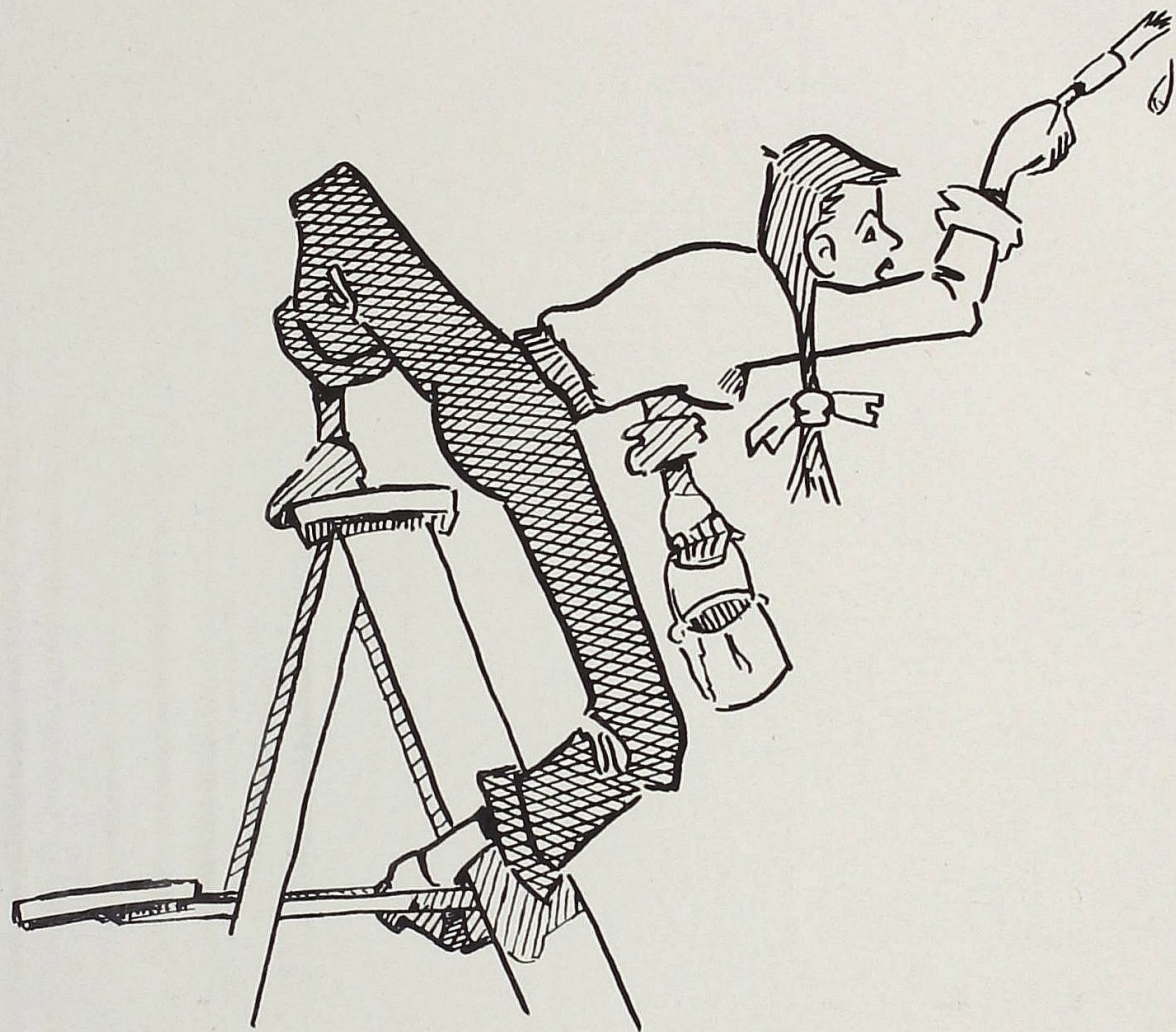
Zeta Sigma

Founded only a year after Alma College itself, Zeta Sigma Literary Society has prospered throughout the years. As its purpose and that of the founders, the organization was established to raise the literary standards of those who joined its ranks, but above all its purpose was to mould men of character who could fit into all walks of life. Succeeding nobly in this phase of their work, the Zetas point with pride today at the long list of famous men throughout the nation who belonged to Zeta Sigma when they went to Alma. One of their chief honors lies in the fact that the fraternity has the largest number of successful high school coaches in the country today.

Temporarily suspended during the war years, the frat this second semester was reorganized by several returning vets. On its spring calendar was the second annual Rat Race, an evening of fun and frolic and dancing for the faculty and students, and the annual Spring Formal for its members and their guests. Plans are under way to move back to their house at 323 West Superior. It has recently been completely re-decorated along a modernistic motif, and will be re-opened on September 14, 1946.



## Inter-Sorority Council



This has been the biggest year in the activities of the Inter-Sorority Council. This informal organization is composed of two members from each of the three sororities, one patroness from each sorority and the Dean of Women. It has charge of directing all sorority relations with the women of the college and with promoting good feeling and understanding between the three groups.

Sorority pledging was handled more smoothly than in the past years, largely due to the organization and rules prescribed by the Council for the conduct of pledging.

Each sorority may give three parties besides one open party for all non-sorority girls. The rushing period was set for March 11 and March 25 followed by a period of silence. On April 2 rushees gave their choice and on April 3 bids were placed under the door of those accepted.

## Sigma Philo



Sigma Philo, the youngest sorority on campus, was chartered in February, 1943, when the Philomathean and Pi Sigma Nu sororities combined to promote the all-round girl of Alma College.

High ideals, true friendship, loyalty, courage, and faith are the important factors that make up the real Sigma Phi.

Not only do the Sigma Philos excel scholastically, having held the cherished scholarship cup the last three years and claiming the holders and runners up for the University of Michigan graduate scholarship, but they are also extremely active as well in the social and sports life of Alma. They have leadership in the Scotsman, Almanian, Youth Fellowship, Women's Senate, W. A. A., Debate, and other capacities.

During the first semester the Sigma Philos established the fact that they do give successful parties. Under the leadership of Ruth Edwards the sorority pledged Betty Hartley, Barbara Bunting, and Agnes Faegler. They held their annual homecoming breakfast. They gave the campus The County Fair and the Amo Te Valentine dance, as well as initiating the much loved "complimentary" dances after basketball games. On the refined side they treated their patronesses to afternoon teas and were guests at a special tea given them by Mrs. Hamilton. Turning to a lighter phase they hiked off with guests to a brisk closed party at Turck's Park, winding up at the cinema with their dates. Active in many offices already, Jan Cordes led the Sigma Philos in the second semester.

Between the cherry trees, to the tune of "Nicki Nicki Timbo No So Rim Bo, Long Name No Can Say" and eating with chop-sticks the Sigma Philos transferred a Chinese Fete to the Chapel Rec. Room where their opening rushing party was held. Next on the calendar came several closed parties. After their formal initiation and banquet, the Si Phis fervently redecorated their rooms, went all out for softball, had big closed parties, a week end at the lake, and wound up their social season with a formal dinner dance on May 24.

ACTIVE MEMBERS

- |                  |                         |
|------------------|-------------------------|
| Helen Hayward    | Betty Fortino           |
| Betty June Smith | Betty Ellis             |
| Joyce McKinley   | Red (Orthella) Anderson |
| Phyllis Smith    | Nancy Harden            |
| Virginia Kocher  | Jackie Sevier           |
| Jean Ann Winship | Elizabeth Whiting       |
| Helen Hawkins    | Jean Trueman            |
| Lois Church      | Jane Patton             |
| Ruth Burkett     | Nettie Wilson           |
| Tillie Tobin     | Mary Milham             |

OFFICERS

- |                           |                                   |
|---------------------------|-----------------------------------|
| Presidents                | Jane Patton — Helen Hayward       |
| Vice-Presidents           | Nettie Wilson — Jean Ann Winship  |
| Recording Secretaries     | Betty June Smith — Ruth Burkett   |
| Corresponding Secretaries | Nan Harden — Joyce McKinley       |
| Treasurer                 | Jean Ann Winship — Nan Harden     |
| Social Chairmen           | Nettie Wilson — Red Anderson      |
| Keeper of the Archives    | Betty Fortino — Jacqueline Sevier |
| Critics                   | Jean Trueman — Helen Hawkins      |
| Reporter                  | Putt Smith                        |

Kappa Iota, founded in 1921 by Dean Elizabeth Roberts, has always been noted for the friendliness, warmth, and sincerity of its spirit. Always an active and enthusiastic group of girls, the KI's upheld their reputation of giving good and successful dances again this year.

Their first dance, the "Sno-Ball", was given in December. The theme was carried out by snow covered windows, holly wreaths, a snow man and a beautifully decorated Christmas tree. A floor show, comical in make-up, ushered in this season's type of entertainment.

In February the biggest dance on the sorority's social calendar and one of the lime-lights of the year was given . . . "The South American Swing". The chapel recreation room was beautifully decorated with the gay colors of South America predominating. The floor show with its songs, dances, and lovely costumes will long be remembered by everyone.

The sorority has also had numerous other closed parties this year, including a dinner for patronesses in St. Louis, a Christmas spread, several rushing parties, a house party, and their annual spring formal in May.

Their main project for the year was fixing the sorority room which proudly sports new furniture and a fresh atmosphere.

## Kappa Iota



A  
Q

Alpha Theta, founded in 1870 by Mrs. Elizabeth Hunting, is the oldest sorority on the Alma College campus. The Thetas continue to be an ambitious group of socially active girls, whose talents are ever-bent toward a lively year.

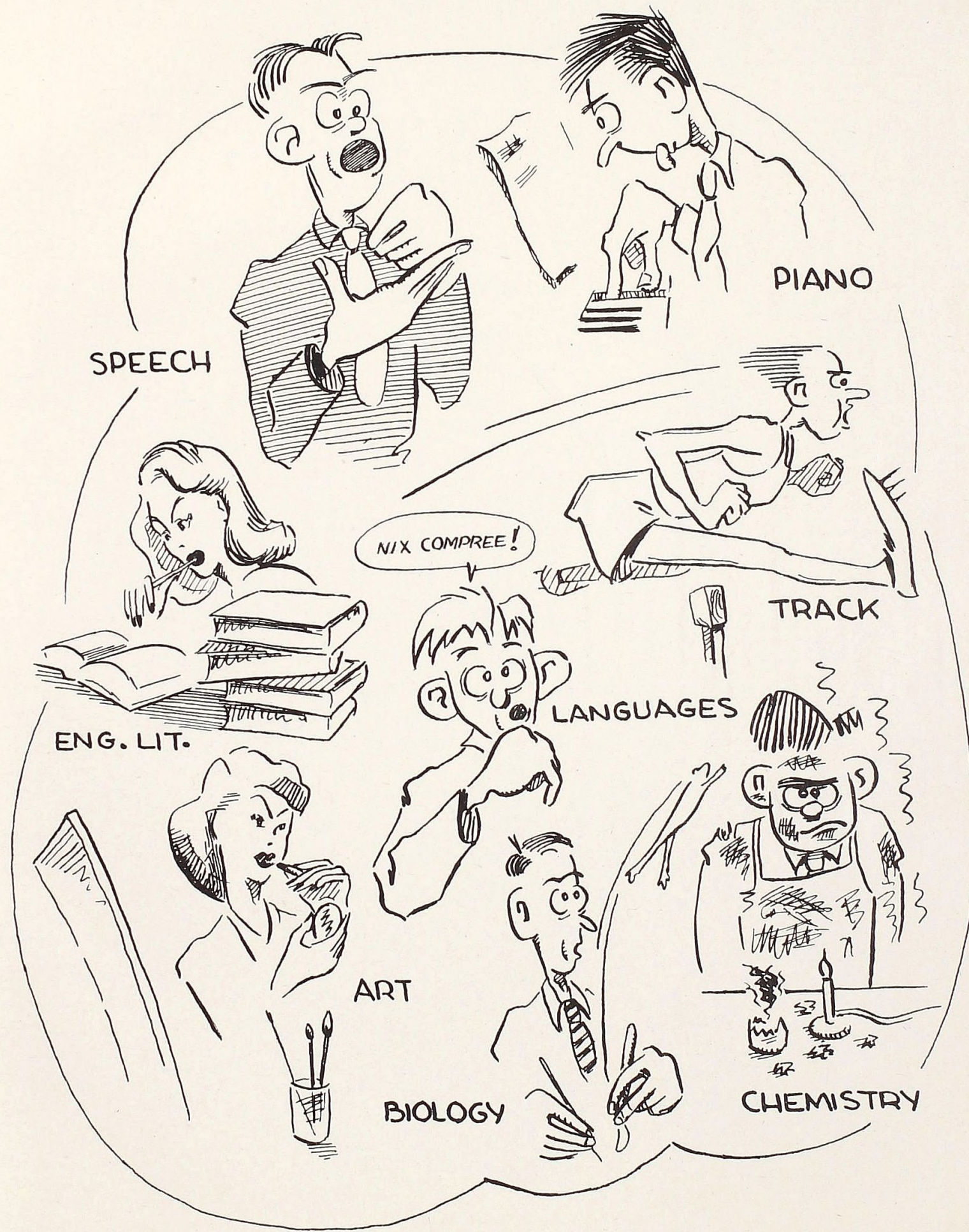
The social season, as is customary, was given a flying start by the Theta Mixer, the first dance of the year held on November 10th. But the biggest and best of this sorority's dances was the Club AQ held on January 19th, which ushered in the new year adequately. The Club AQ was a very successful remodeling of the traditional Theta Tavern, and carried out a night club atmosphere, including a floor show with all the trimmings.

Other events on the Theta calendar included the various rushing parties, beginning with the all-frosh girls' theater party. Two closed parties were held in May and June. The former was the annual spring formal, and the latter was a week end house party at the Rosendale cottage on Crystal Lake. The Thetas started the custom of sorority house parties in 1942, when they packed up their swim suits, and took off for a lake near Clare.

On graduation morning, June 15th, the sorority held its farewell breakfast. Mothers and friends of the members were present to bid goodbye and good luck to the graduating members.

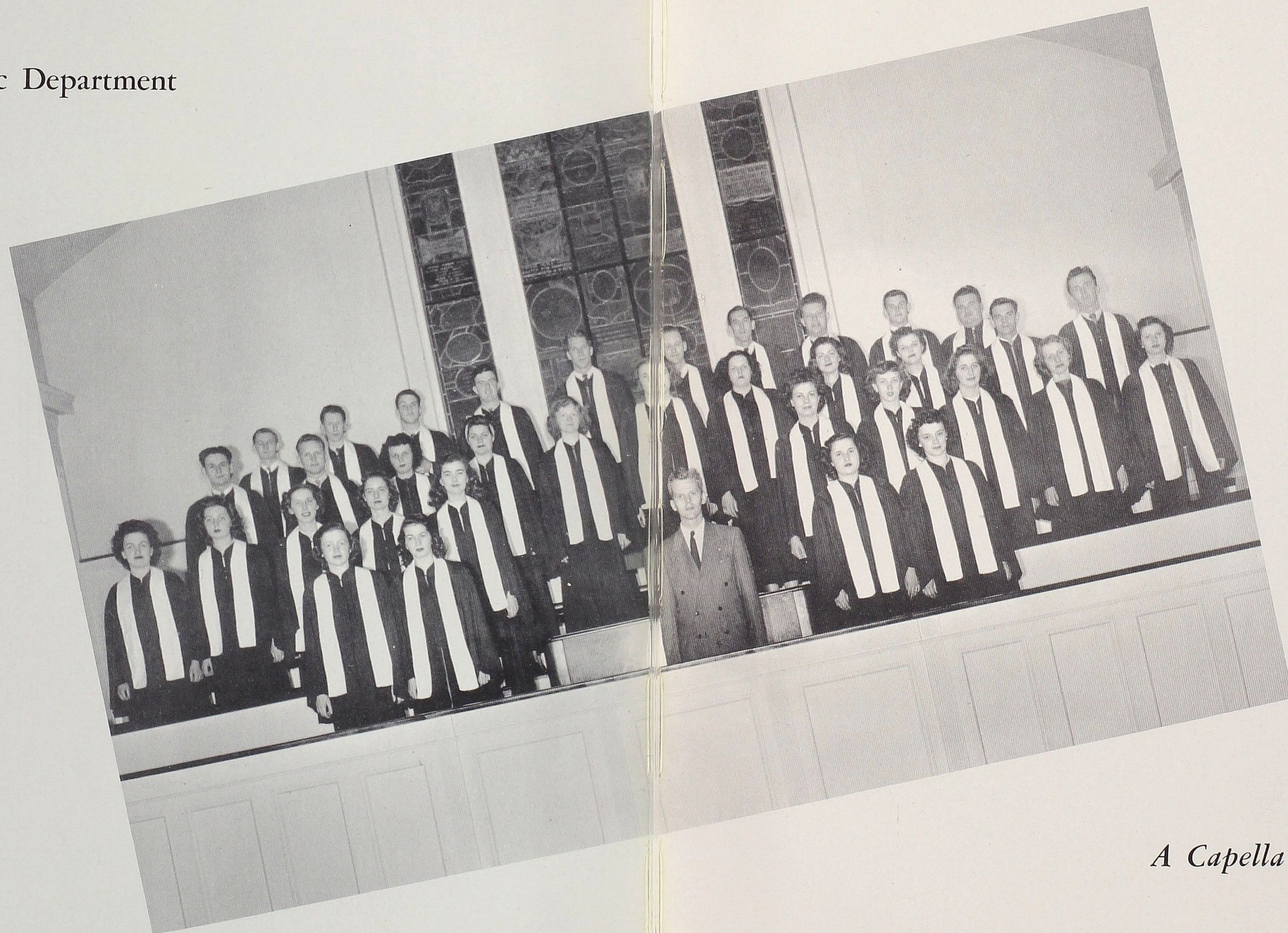
In the fall term, Nan Fischer officiated as president, Barbara Kemper as vice-president, Amy Middleton as recording secretary, Helen Collins as corresponding secretary and Pat Adams as treasurer.

“...Throughout The Years...”





Music Department



*A Capella Choir*

CHOIR MEMBERS

- |                   |                  |
|-------------------|------------------|
| Orthella Anderson | Barbara Kemper   |
| Wanda Bigler      | Arlisle Kiemle   |
| Charles Bird      | Lucille Kolberg  |
| Lucille Black     | Paula McCallum   |
| Wilma Breu        | Joyce McKinley   |
| Ben Clark         | Margaret Marvin  |
| Bill Cornwell     | Steve Nisbet     |
| Shirley Dittmar   | Carl Nordstrom   |
| Betty Ellis       | Sally Palmer     |
| Joyce Fischer     | Jean Rosendale   |
| Al. Goodrich      | Dave Sanborn     |
| Bill Graff        | Glenn Sempsrott  |
| Libbie Greenwalt  | Jean Slaski      |
| Nan Harden        | Betty June Smith |
| Helen Hawkins     | George Snively   |
| Carroll Hyde      | Gene Teeter      |
| Willard Jackson   | Jean Ann Winship |

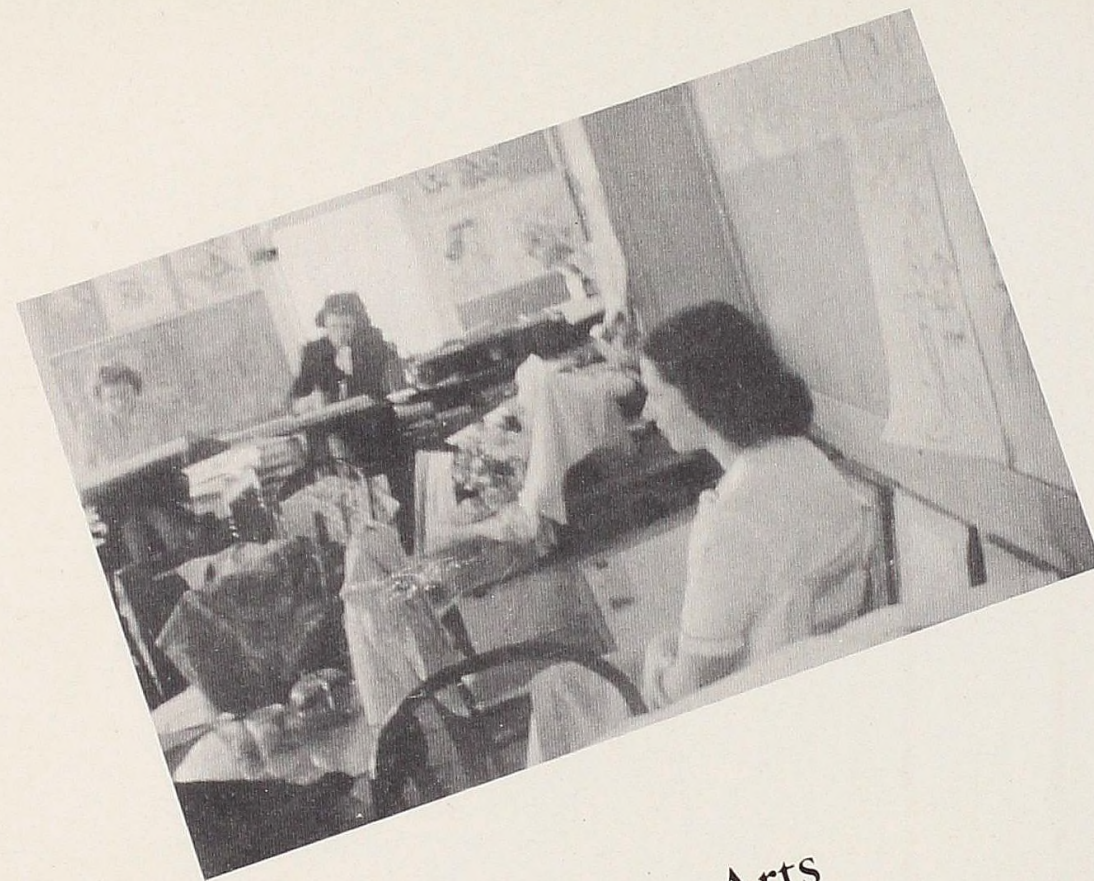
Duane Van Duzen

Clizbe House, where the Music Department is located, is one of the busiest places on campus. Upon entering this building one hears that ever-fascinating yet strange mixture of instrumental and vocal music resulting from certain determined efforts to smooth out that tricky Bach fugue or to master a new operatic aria.

The State Department of Public Instruction recently approved our curriculum leading to the Bachelor of Music Education (B. M. E.) degree. The course of study leading toward this degree is planned particularly for students who are preparing to teach music in the public schools.

In addition to the bi-monthly student recitals, music students have many opportunities to gain valuable experience by performing for community churches, college assemblies, club programs, etc.

Included in the regularly scheduled year's activities are the Christmas and Commencement concerts presented by the A Capella Choir, the annual commemoration of National Music Week, formal recitals by faculty members and advanced students, and the Gratiot County High School Music Festival which was held this year for the first time.



Fine Arts

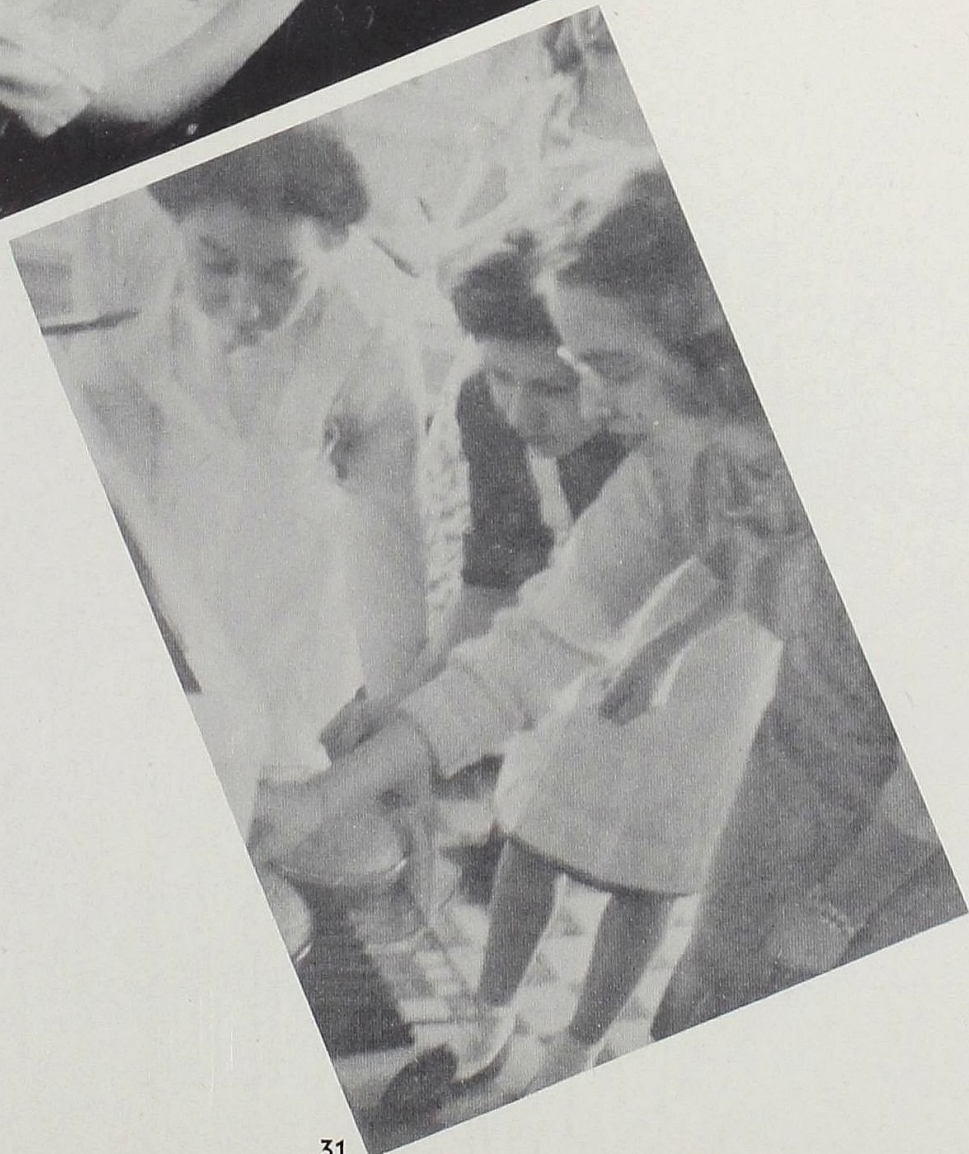
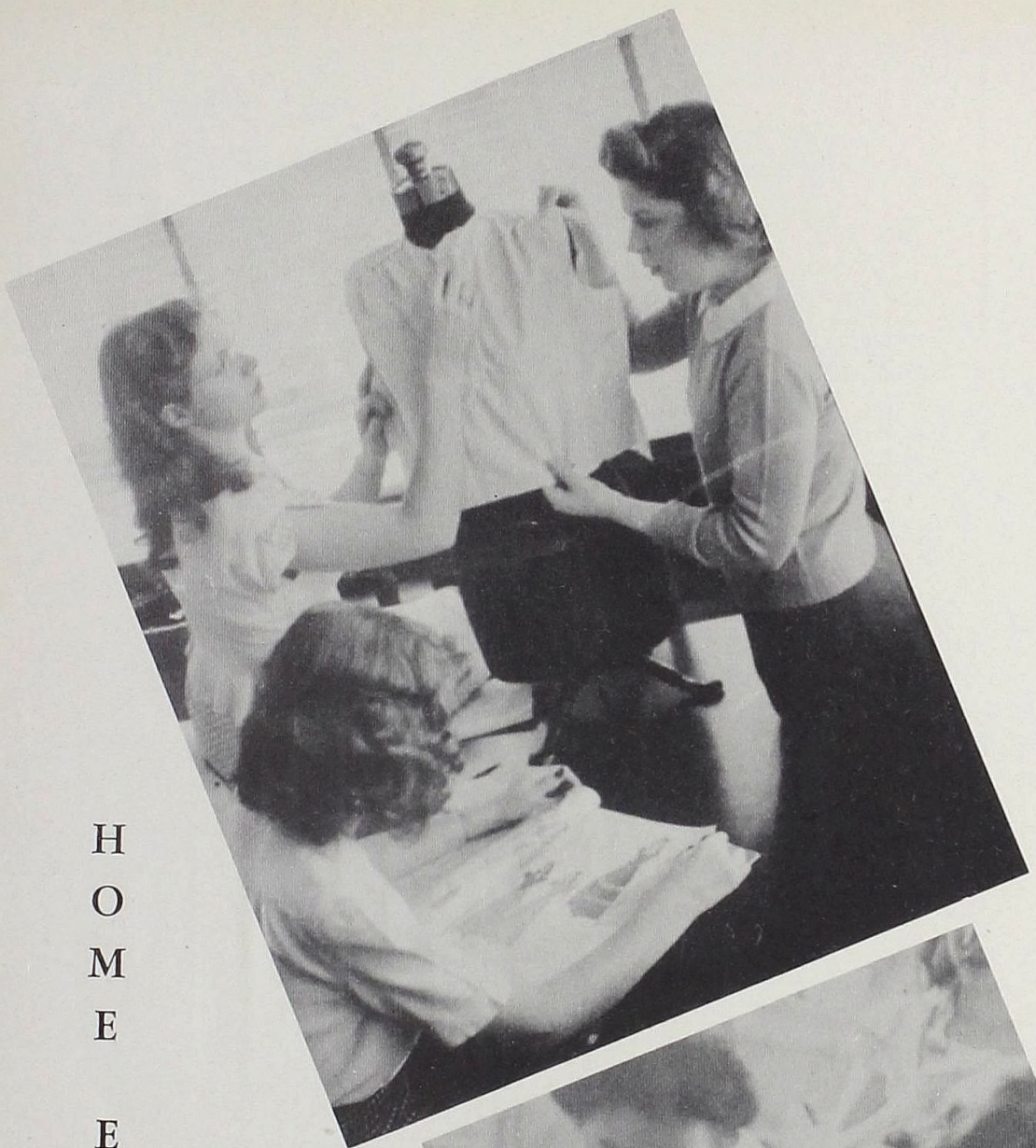


The work in fine arts is designed to fit the practical needs of each individual. There are courses for those students desiring knowledge and understanding of art for their cultural life, for those desiring actual experience for enjoyment or profession. Its purpose is to stimulate creative ability; to make art a vital part of life's experiences, and to create an appreciation and knowledge of the finer pieces of art and the personalities behind them.

One of the most interesting and practical is a course in Home Decoration in which the pupil works out color-schemes for rooms, plans room organization, etc.

Other courses include Drawing and Painting, Dress Selection and Designing, Commercial Art, and Creative Design.

In drawing and painting the pupil selects his own media — charcoal, pastel, water color and oils — and works on anything from still to live models.



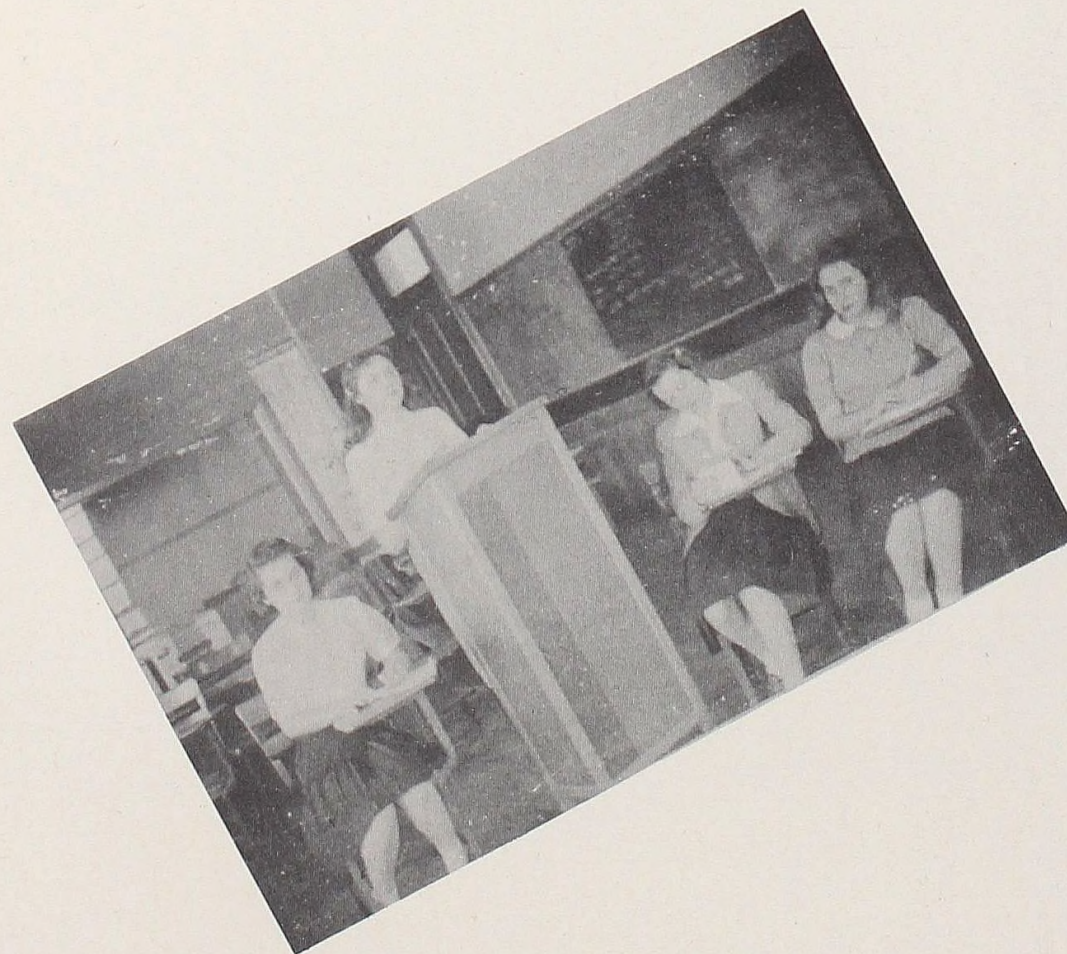
With the return of Professor Rowland to the Speech Department, and to meet the demands of the increasing enrollment, speech activities were resumed and many additional courses were offered. Among the courses resumed were Radio Technique, Discussion, Debate, and Public Speaking.

The debate team participated in two tournaments this spring. The first session was in April at Ypsilanti for all inexperienced debaters. Alma College is a member of the Michigan Intercollegiate Speech League as are Albion, Calvin, Central Michigan, Hope, Hillsdale, Michigan State, Western Michigan, Wayne, Kalamazoo and Michigan Normal who participate in the state-wide contest.

The final contest was held May 3rd, at Calvin College in Grand Rapids.

This fall, Alma will compete in interscholastic activities including Discussion, Varsity Debate, Oratory, and Extempore Speaking.

## Speech Department





PHYSICAL

EDUCATION

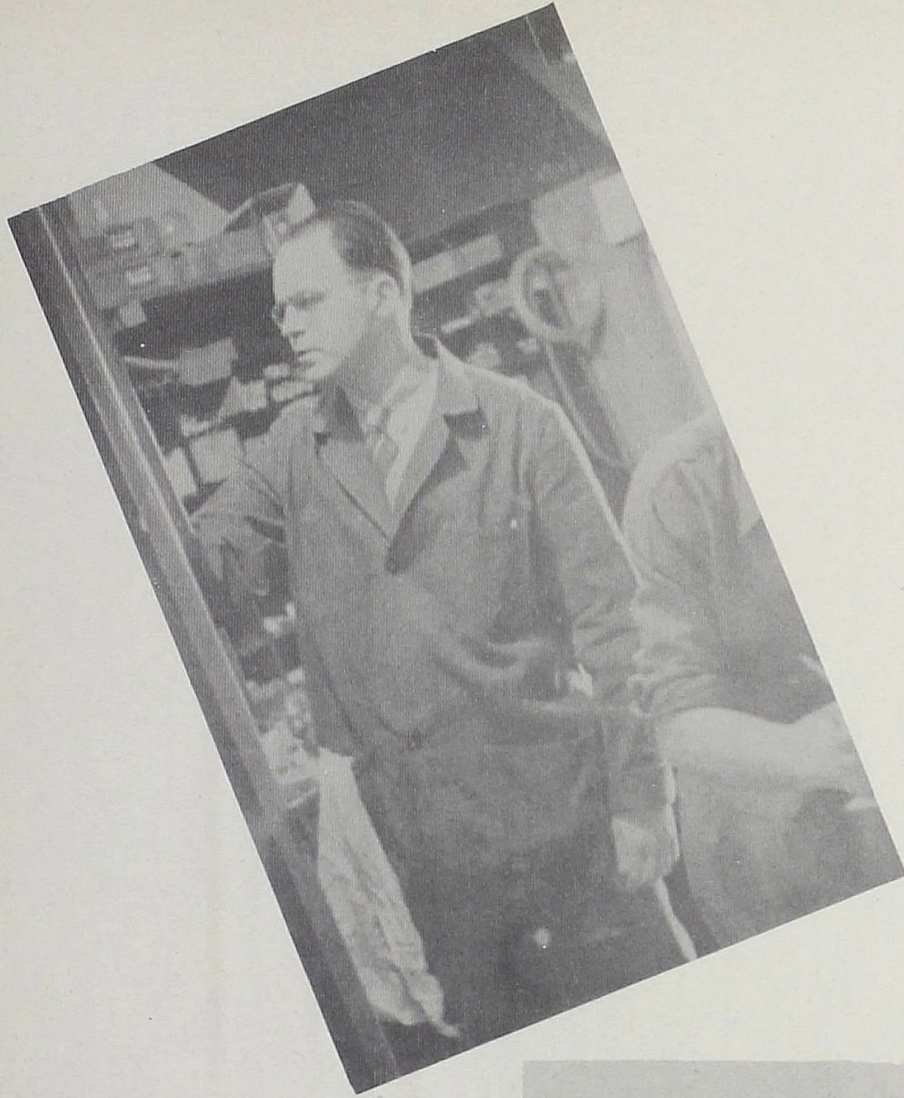


52680

BIOLOGY



# Chemistry



*"...Pledging Thee A Fond Devotion..."*



Dean Irene Harwood

Dean Paul L. Rice



# Faculty



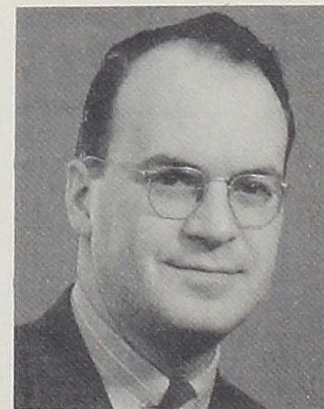
MRS. JULIA ROECKER . . . . Instructor in Fine Arts . . . . Graduate of Art School, Chicago Art Institute, Herron Art Institute, Indianapolis, New York University, Landscape Painting at Provincetown, Massachusetts under Charles Hawthorne.



DR. PAUL L. RICE . . . . Professor of Biology, Dean of Faculty, Dean of Curricula . . . . B. S., and M. S., University of Idaho, Ph. D., Ohio State University . . . . Member of Sigma Xi and Alpha Zeta Honorary Societies . . . . Author of papers and bulletins on Entomology.



WILLIAM LaPAUGH . . . . Biology Laboratory Assistant . . . . B. S., Alma College.



DR. LAWRENCE PHILLIPS . . . . Professor of Chemistry . . . . B. S., Alma College . . . . Ph. D., Indiana University.



MISS MARGARET E. FOLEY . . . . Professor of French . . . . A. B., Ohio Wesleyan University . . . . A. M., University of Illinois . . . . Graduate Study, University of Illinois and Columbia University foreign study at L'Institute de Phonetique, Paris.

# Faculty



MOLLY PARRISH . . . . Professor of Spanish, Registrar . . . . A. B., Alma College . . . . A. M., University of Michigan . . . . University of Mexico.



SUZANNE GORY . . . . Assistant Professor of French.



LYDER L. UNSTAD . . . . Professor of Economics . . . . A. B., Concordia College . . . . A. M., University of Minnesota . . . . Akademisk Borgerbrev, University of Oslo, Norway . . . . Ph. D., Ohio State University . . . . University of Wisconsin.



RAYMOND G. SWIGART . . . . Assistant Professor of Mathematics . . . . B. S., Alma College . . . . M. S., Alma College . . . . A. M., University of Michigan.



HERMAN W. SPENCER . . . . Professor of English . . . . A. B., Westminster College . . . . A. M., Westminster College . . . . Pittsburgh Theological Seminary Graduate study, John Hopkins University.



# Faculty

JAMES E. MITCHELL . . . . Professor of History . . . . A.B., Alma College . . . . A.M., Columbia University . . . . L.L.D., Alma College . . . . Cambridge University . . . . Oxford University . . . . University of London.



HENRY W. HOWE . . . . Ammi Wright Professor of History and Political Science . . . . A.B., Western State Teachers College . . . . A.M., University of Michigan.

CHARLOTTE KLEIN . . . . Librarian.



MRS. D. W. ROBINSON . . . . Assistant Librarian

ROBERT W. CLACK . . . . Ammi W. Wright Professor of Mathematics and Astronomy . . . . A.B., Grinnell College . . . . A.M., Grinnell College . . . . University of Chicago . . . . North China Language School (Peking) . . . . Union Theological Seminary (Peking) . . . . University of Michigan.



# Faculty

EUGENE F. GROVE . . . . Instructor in Vocal Music . . . . B.M., M.M., Illinois Wesleyan University . . . . Private study with Thomas N. MacBurney, Chicago.



MAE NELSON STEWART . . . . Professor of Piano and Organ . . . . B.A., Alma College . . . . M.A., University of Michigan.

RUTHE KRUELEN . . . . Assistant Professor of Piano and Organ . . . . A.B., Alma College.



MRS. IRENE HARWOOD . . . . Dean of Women, Instructor of Orientation . . . . A.B., Alma College.

ALWARD E. BROWN . . . . Professor of Philosophy and Psychology, Assistant Professor of Physics . . . . A.B., Albion College . . . . B.S.E., University of Michigan . . . . A.M., Ph.D., Harvard University . . . . University of Maine . . . . University of Chicago.



# Faculty



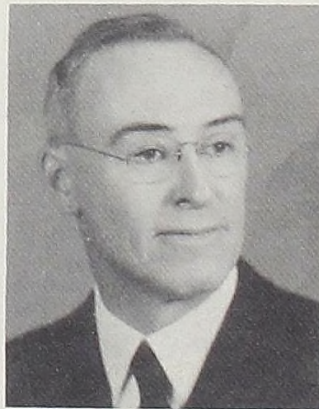
FLOYD E. LEAR . . . . Director of Athletics . . . . A. B., Western State Teachers College.

MRS. KENNETH GAUMER . . . . Instructor of Volleyball and Seasonal Sports . . . . A. B., Michigan State Normal College.



MRS. HAZEN COLE . . . . Instructor of Basketball and Bowling . . . . B. S., Arnold College.

RAYMOND DITTO . . . . John F. Dodge Professor of Physics . . . . B. S., Denison University . . . . A. M., Princeton University . . . . Ohio State University . . . . Chicago University.



REV. ELMER BAKER . . . . Professor of Religion . . . . A. B., Alma College . . . . B. D., Chicago Theological Seminary.

# Faculty



FLORENCE STEWARD . . . . Professor of Sociology . . . . A. B., Cincinnati University . . . . A. M., Radcliffe College . . . . Miami University . . . . Graduate study at Cincinnati University . . . . Columbia University . . . . University of Chicago . . . . New York School of Political and Social Science.

A. WESTLEY ROWLAND . . . . Instructor in Speech . . . . A. B., Western Michigan College of Education . . . . A. M., University of Michigan.



MRS. RAY J. KING . . . . Instructor in Home Economics and Dietition . . . . B. S., Central Michigan College of Education.

"...Guardian Of Our Hopes And Fears..."



Mr. E. E. Peterson,

## Business Administration



The Administration of the College is supervised by President Roy W. Hamilton. One of the advantages of our institution is the accessibility of our genial president, who is always willing to spend time with students. He is assisted by his secretary, Mrs. Euarda M. Abernethy and Bertille Tobin, who does filing and mailing.

The Registrar's Office in which scheduling of classes, record keeping and admissions are the main jobs, is presided over by Miss Molly Parrish. She is assisted by Virginia Buck and Ruth Burkett.

Mrs. Ralph C. Harwood, dean of women and Dr. Paul L. Rice, dean of the faculty, are in direct charge of the student body and have done a great deal toward making pleasant the life of the students at Alma College. The friendly atmosphere which prevails here is a decided asset to our school.

Alumni relations and Student Enlistment are supervised by President Hamilton, Dean Harwood and Dean Rice. Professor Eugene F. Grove also has assisted in the student enlistment program.

The Business Office with Mr. E. E. Peterson, business manager, Mrs. Virginia T. Metheany, secretary and bookkeeper, and Mrs. Joyce G. Maxwell, cashier, has two chief functions, maintaining the physical properties of the college and the supervision of funds. The reconversion of the college from war to peace time activities has presented many problems this year to the college business office, including housing, and learning the procedures of the Veteran's Administration in giving the many veterans enrolled their G. I. educational benefits.

## Business Administration

### OFFICERS

Roy W. Hamilton	- - - - -	President
Molly Parrish	- - - - -	Registrar
Paul R. Rice	- - - - -	Dean of Faculty
Irene Harwood	- - - - -	Dean of Women
James E. Mitchell	- - - - -	Alumni Dean

### Administrative Council—

The President (ex officio), the Registrar, the Dean of Faculty, the Dean of Women, and Professors Howe, Clack, and Foley.

A. G. Studer	- - - - -	Treasurer
Earl E. Peterson	- - - - -	Business Manager and Assistant Treasurer
Charlotte Klein	- - - - -	Librarian
Mrs. D. W. Robinson	- - - - -	Library Assistant
Mrs. Arthur Davies	- - - - -	Housemother, Wright Hall
Mrs. Thomas Kain	- - - - -	Housemother, Pioneer Hall
Euarda M. Abernethy	- - - - -	Secretary to the President
Virginia Metheany	- - - - -	Secretary to the Business Manager
Joyce Maxwell	- - - - -	Cashier, Business Office

## Synod of Michigan

### COMMITTEE ON CHRISTIAN EDUCATION

#### Ex Officio

Rev. Robert M. Frehse	- - - - -	Ferndale
Rev. Melvin R. Vender	- - - - -	Cass City
Rev. Stuart W. Werner	- - - - -	Stambaugh
Rev. Arthur H. Cruickshank	- - - - -	Mason
Rev. E. P. Linnell, Chairman	- - - - -	Petoskey
Rev. Wanzer H. Brunelle	- - - - -	Mt. Pleasant
Rev. Charles C. Lindsay	- - - - -	Coldwater

#### Elected by Synod

Mr. Harley Gibb	- - - - -	Detroit
Mr. Robert Heath	- - - - -	Kalamazoo
Mrs. E. O. DeHaven	- - - - -	Hesperia
Dr. Gordon Clack	- - - - -	Midland
Mrs. Duncan Samson	- - - - -	Detroit
Mrs. Bruce Hodgkinson	- - - - -	Marlette
Mr. Floyd C. Fischer	- - - - -	Bay City

# Board of Trustees

## OFFICERS OF THE BOARD OF TRUSTEES

### Officers

Rev. Ralph D. Kearns, D. D.	- - - - -	Chairman
Dr. A. G. Studer	- - - - -	Treasurer
Mr. William McFadden	- - - - -	Secretary

## MEMBERS OF THE BOARD

### Class of 1946

- Mr. Maynard A. Cook, 120 S. LaSalle Street, Chicago, Illinois.
- Rev. John A. Gardner, D.D., First Presbyterian Church, Midland, Michigan.
- Mr. J. E. Wellwood, 1024 Grand Traverse Street, Flint, Michigan.

### Class of 1947

- Mr. William McFadden, 508 State Street, Alma, Michigan.
- Rev. Henry W. Fischer, D. D., 702 Adams, Street, Saginaw, Michigan.
- Rev. Edward A. Mohns, Westminster Church, Grand Rapids, Michigan.
- Mr. J. Nelson Pyle, 3122 Gratiot at McDougall, Detroit, Michigan.
- Mr. Stephen S. Nisbet, Gerber Products Company, Fremont, Michigan.

### Class of 1948

- Mr. Carl W. Bonbright, General Foundries, Flint, Michigan.
- Mr. Wirt M. Hazen, Three Rivers, Michigan.
- Mr. Jerry Tyler, Tyler Fixture Corporation, Niles, Michigan.
- Mr. Howard Porter, East Jordan, Michigan.
- Rev. John Vander Meulen, 608 West Street, Lansing, Michigan.
- Rev. Arthur W. Ratz, D.D., Fort Street Presbyterian Church, Detroit, Michigan.

### Class of 1949

- Dr. A. G. Studer, 2020 Witherell Street, Detroit, Michigan.
- Rev. Ralph D. Kearns, D. D., 703 Grand Traverse Street, Flint, Michigan.
- Mr. Reid Brazell, 815 State Street, Alma, Michigan.
- Dr. William R. Veazey, Dow Chemical Company, Midland, Michigan.
- Mr. Earl R. Stein, Dow Chemical Company, Midland, Michigan.
- Mr. Grant L. Cook, Penobscot Building, Detroit, Michigan.
- Mr. John W. S. Pierson, 1829 Federal Street, Grand Rapids, Michigan.
- Rev. Samuel H. Forrer, D. D., Asheville, North Carolina.

# Women's Advisory Committee

Mrs. Sadie Soule, Alma	- - - - -	President
Mrs. A. R. Moon, Saginaw	- - - - -	Vice-President
Mrs. Lawrence Montigel, Alma	- - - - -	Treasurer
Mrs. Roy W. Hamilton, Alma	- - - - -	Secretary

Mrs. William A. Bahlke	- - - - -	Alma
Mrs. Joseph W. Britton	- - - - -	Midland
Mrs. Donald J. Porter	- - - - -	Grand Rapids
Mrs. George Wadley	- - - - -	Saginaw
Mrs. C. P. Milham	- - - - -	Alma
Mrs. Richard L. Waggoner	- - - - -	St. Louis
Mrs. J. W. Grills	- - - - -	Flint
Mrs. W. J. Sonnenburg	- - - - -	Detroit
Mrs. Frank E. Johnson	- - - - -	Bay City
Mrs. A. E. Jacobson	- - - - -	Grand Haven

# Alumni Association

President	- - - - -	Stephen S. Nisbet, '19
Vice-President	- - - - -	Mrs. Arthur Crawford, '32
Secretary-Treasurer	- - - - -	Miss Jessie Platt, '29

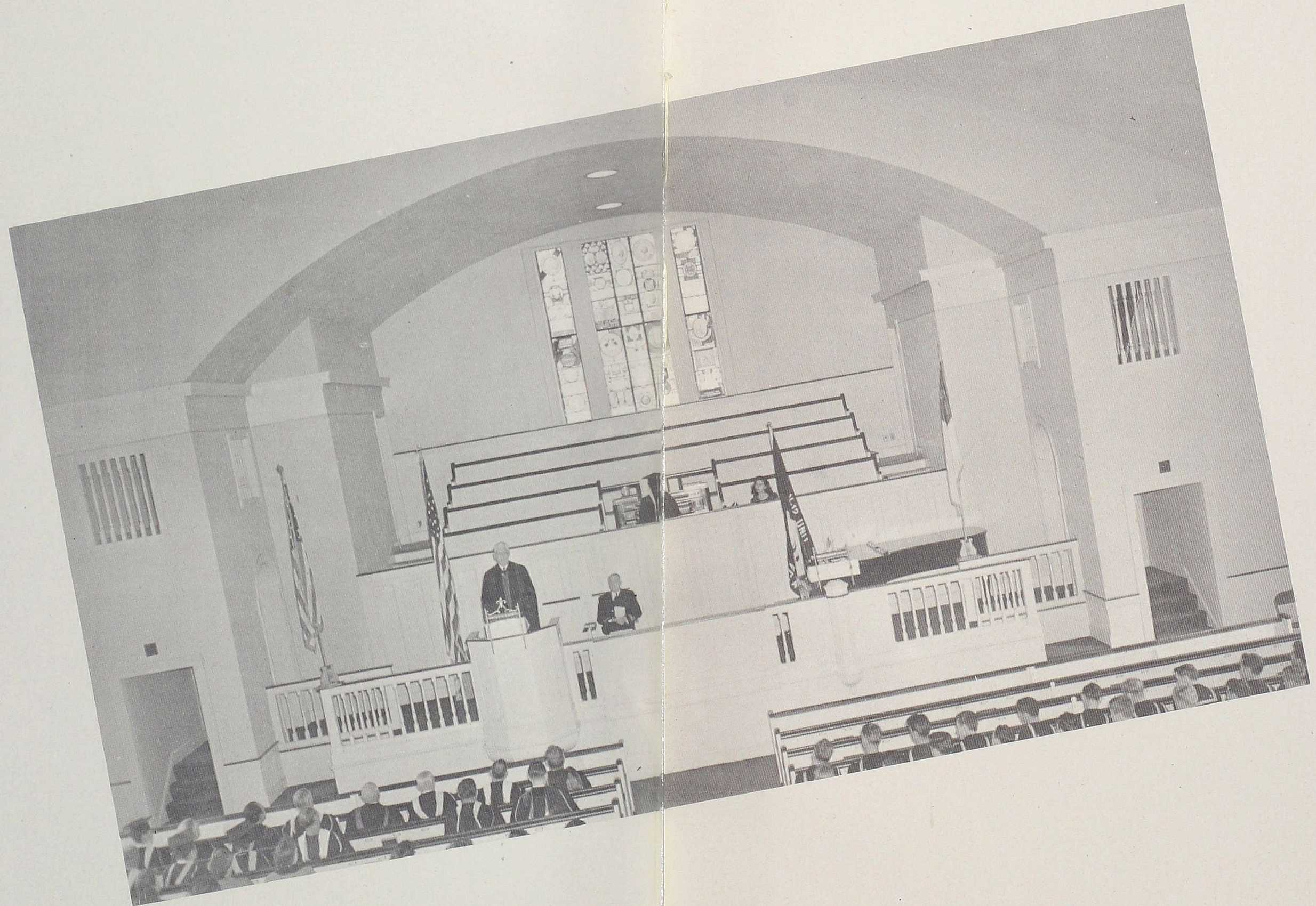
- James E. Mitchell, '93
- F. Roy Phillips, '14
- Stanley C. Vliet, '24
- Alex Hendershot, '29

The annual meeting of the Association is held on Alumni Day, which is the day before Commencement.

The Association, formed by the class of '91, is an important and influential organization. Graduates of the college and kindergarten training departments and all former students of the college are members of the Association.

*Alma, Alma*

*Sing of Alma Mater*



*"...Thy Loyal Children..."*



## Senior Class



COLLINS, HELEN . . . . A. B. . . . . Biology . . . . Alpha Theta, president, 4 . . . . Wright Hall Senate.

EDWARDS, RUTH . . . . A. B. . . . . Biology . . . . Sigma Philo, president, 4 . . . . Wright Hall Senate, president, 4 . . . . W.A.A. social chairman . . . . Almanian . . . . Scotsman, Editor, 4 . . . . Phi Sigma Pi . . . . Who's Who in American Colleges and Universities.

FISCHER, KATHRYN . . . . A. B. . . . . History . . . . Alpha Theta, president, 4.

GILLERT, GEORGE . . . . A. B. . . . . English . . . . Delta Gamma Tau . . . . 1942 Scotsman.



HEIMFORTH, JOHN . . . . B. S. . . . . Chemistry . . . . Phi Phi Alpha . . . . Business Manager 1942 Almanian . . . . Basketball, 1, 2.

HICKS, JAMES . . . . A. B. . . . . Economics.

HOWE, JACK . . . . A. B. . . . . History . . . . Basketball, captain, 4.

KEMPER, BARBARA . . . . A. B. . . . . Music . . . . Alpha Theta, vice-president . . . . Choir . . . . Student Council . . . . Wright Hall Senate, secretary.



MIDDLETON, AMY . . . . A. B. . . . . Art . . . . Alpha Theta, vice-president . . . . Scotsman Art Editor.

MILHAM, MARY . . . . A. B. . . . . Biology . . . . Kappa Iota . . . . Choir.

NAVARRE, FRANK . . . . A. B. . . . . Physical Education . . . . Zeta Sigma . . . . Vet's Club.

PATTON, JANE . . . . A. B. . . . . Mathematics . . . . Kappa Iota, president, 4 . . . . W.A.A. . . . . Senate, president, 4 . . . . Who's Who in American Colleges and Universities.



RICHTER, BETTY . . . . A. B. . . . . Sociology.

ROWE, LAWRENCE . . . . A. B. . . . . Sociology . . . . Delta Gamma Tau, president, 3 . . . . Debate . . . . Student Council . . . . Play Production . . . . Choir.

SHAW, RUTH . . . . A. B. . . . . Spanish . . . . Debate . . . . co-Editor Almanian . . . . Dramatics.

SADAFORE, FRANK . . . . B. S. . . . . Chemistry . . . . Phi Phi Alpha, president . . . . Student Council . . . . Vet's Club.



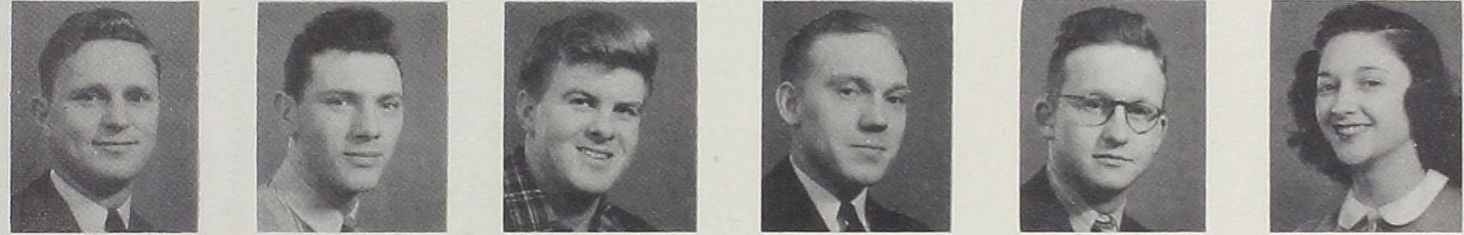
WATSON, MARGARET . . . . A. B. . . . . French . . . . Almanian, co-Editor . . . . Social President of Senate, 4 . . . . Who's Who in American Colleges and Universities.

WUNDERLICH, MARJORIE . . . . A. B. . . . . Sociology . . . . W.A.A. president, 4 . . . . Student Council, secretary . . . . Senior Class, president, 4.

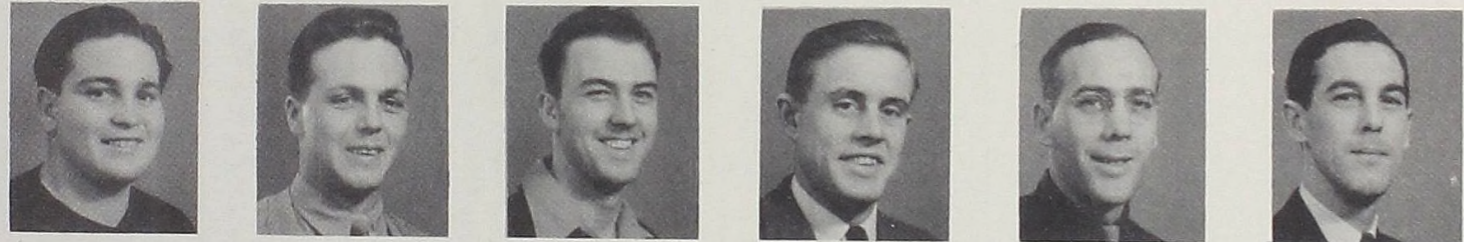
# Juniors



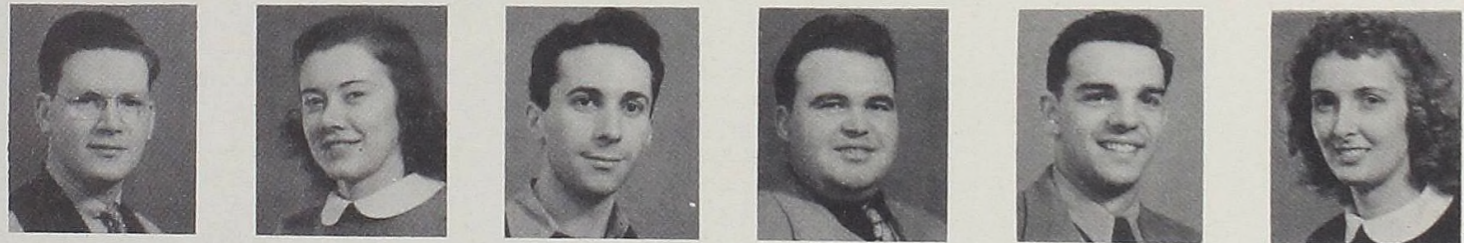
ELLEN ANGELL    WILMA BREU    RUTH BURKETTE    FRANCIS BUSH    LOIS CHURCH    ROGER EVEREST



ALLEN GOODRICH    KENNETH GREENHOE    HAROLD HARTT    WILLIAM HAWKINS    BURDETTE HENRY    MRS. LOLA HENRY



CHARLES KEGEL    LOUIS KOHLER    JOHN McINTYRE    JOHN MILLER    PEYTON MILLHENCH    STEPHEN NISBET



ROBERT NIXON    JEAN PATTERSON    CHUCK PECOR    GLENN SEMPSROTT    GEORGE SNIVELY    MARY ELLEN THOMPSON



ELIZABETH WHITING    WILLIAM YOH    ARDELLE ALLEN

# Sophomore Class

PAT ADAMS  
ORTHELLA ANDERSON  
PATRICIA ATKINS  
WANDA BIGLER  
LUCILLE BLACK  
JOAN BRETT



MELVIN BUDGE  
BARBARA BUNTING  
JANET CORDES  
ROBERT DE YONKER  
ELAINE EDWARDS  
BETTY ELLIS



AGNES FAEGLER  
NANCY HARDEN  
BETTY HARTLEY  
HELEN HAWKINS  
HELEN HAYWARD  
DOUGLAS HOLLAND



VIRGINIA KOCHER  
JOAN LOTT  
MARJORIE McCARTY  
JOYCE McKINLEY  
MARIAN MATTSON  
ALTHEA MULLOY



JACK MULLOY  
HENRY OSTERHOUT  
EARL PETERSON  
ELIZABETH PRATT  
JEAN ROSENDALE  
JACQUELINE SEVIER



JEAN SLASKI  
BETTY JUNE SMITH  
PHYLLIS SMITH  
ELLEN STUART  
HELEN STUART  
ARTHUR TEIXEIRA



JOHN TOBIN  
TILLIE TOBIN  
CLIFFORD VAN AUKEN  
DOROTHY VAUGHAN  
BERDELLA WELSFORD  
ROBERT WHITMAN







JEAN ANN WINSHIP  
RALPH WOLBERS

SOPHOMORES NOT PICTURED-

JOHN BURNS  
HELEN FITZPATRICK  
BETTY FORTINO  
MRS. SARAH HUNSICKER  
ALVAN KIRK

WALLACE MOORE  
MARILYN TEMPLE  
DONALD TOBEY  
JEAN TRUEMAN  
MARGARET WOODLEY

## Freshman Class



ELIZABETH ADAMS  
CLARE ALBEE  
DAVID BARR  
EDGAR BATHUM  
CLIFFORD BEDFORD  
CHARLES BIRD



ARTHUR BOND  
LEON BONNER  
CYRIL BOURCIER  
HAZEL BROWN  
VIRGINIA BUCK  
DONNA CAMPBELL



PATRICIA CARTER  
GERALD CHAPPELL  
DONALD CLARK  
MIRIAM CODDE  
EVALYNE COOLEY  
WILLIAM CORNWELL



NORMAN CRAVEN  
LOU ANN CROSS  
WILLIAM DAVIS  
CAROL DENGLER  
SHIRLEY DITTMAR  
DOROTHY DUGAL



HARLAN EBRIGHT  
ARLAN EDGAR  
DAN ELSON  
TED EMERY  
HOWARD FIELDS  
JOYCE FISCHER



JOYCE FISHER  
ALBERT GILBERT  
BARBARA GIRVAN  
HELEN GRACIE  
WILLIAM GRAFF  
LORIS GREEN

## Freshman Class



KATHLEEN GEERLINGS  
LIBBY GREENAWALT  
RODNEY GROVER  
CARMEN HOCKER  
HARRY HOFFMAN  
GEORGE HUNTER



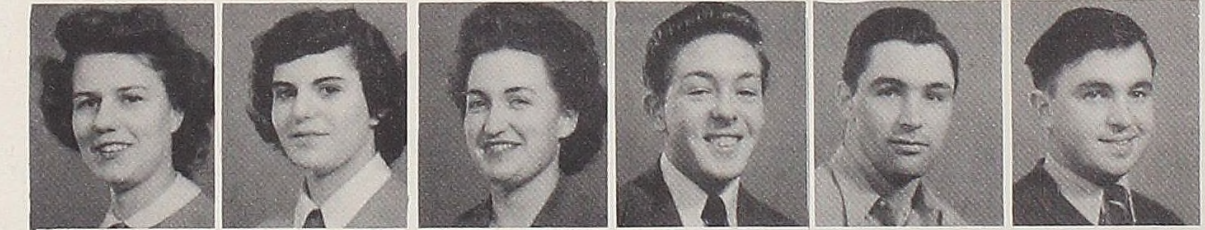
CARROLL HYDE  
WILLIARD JACKSON  
VIRGIL JESSUP  
HENRY JOHNSON  
SALLY JOHNSON  
THOMAS JORDAN



ARLISLE KIEMLE  
JOHN KIMBALL  
LUCILLE KOLBERG  
JACQUELINE KRONBERG  
GEORGE KRUEGER  
FEDERICO LARREA



BILLIE JO LEE  
ROBERT LIEBERMAN  
FLORENCE LIFTON  
NORMAN LINCOLN  
ORVILLE LIPPERT  
NANCY LUTHER



BETTY LYBERG  
ETHELYN McARTOR  
PAULA McCALLUM  
JACK McARTHUR  
JUSTIN McCARTY  
JACK McCONKEY



FRED McDONALD  
WILLIAM McFARLANE  
CARROLL MacLEOD  
JACK MAATSCH  
MARGARET MARVIN  
JEAN MESSECAR



BARBARA MILHAM  
DORIS MINER  
WILLIAM MOORE  
EDMUND MORENO  
LOUISE NEWMAN  
CARL NORDSTROM



GERALD OLIVER  
ARVA PHILLIPS  
PHYLLIS PHILLIPS  
PATRICIA PILSON  
NORMA PINKERTON  
CLIFTON PITTS

# Freshman Class

EDA POLLACK  
ROBERT POLLACK  
PEGGY POWERS  
EDSEL RUTENBAR  
DAVID SANBORN  
HERBERT SAVAGE



RICHARD SCHEANWALD  
SHIRLEY SCHMIDT  
CHARLENE SETTE  
DON SHANKWILER  
KATHLEEN SHAW  
HAROLD SMITH



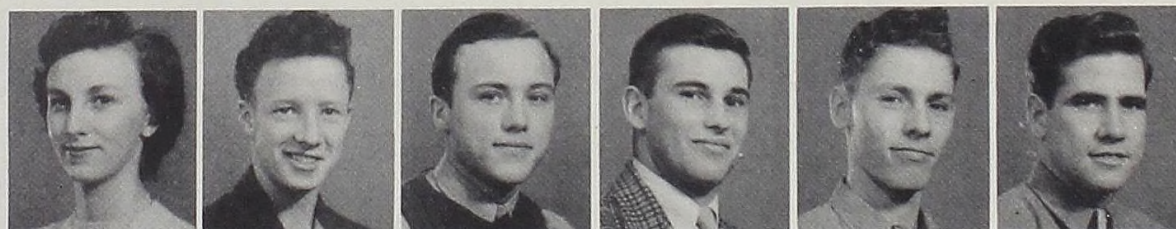
HOWARD SMITH  
BETTY SNOW  
LINWOOD SNOW  
DOROTHY SNYDER  
PHYLLIS STEVEN  
JESSIE STOVER



FREDERICK STRAUSS  
DON SWALLA  
RONALD TAYLOR  
EUGENE TEETER  
CHARLES THOMAS  
GEORGE TOBIN



JOAN TRUE  
WILLIARD TYRON  
LAWRENCE VAN AMBERG  
DUANE VAN DUZAN  
RICHARD WAGGONER  
DAVID WALSH



CHARLES WATSON  
RAYMOND WHALIN  
MARY WHITE  
RICHARD WHITE  
JANET WILBUR  
MARJORIE WILKIE



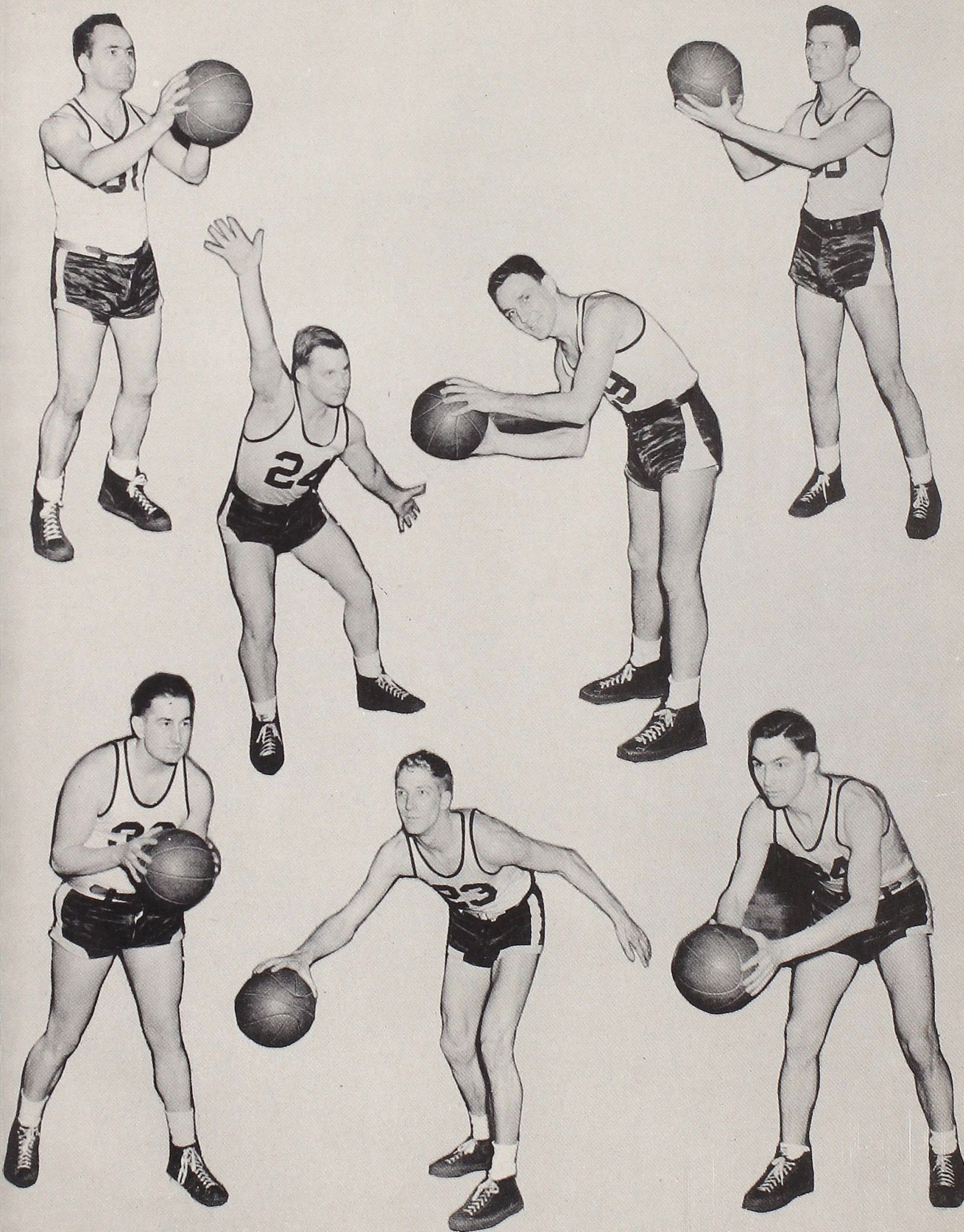
JOHN WILKINS  
FRANK WILSON  
ALBERT WINEWICA  
BEVERLY WINSTON  
JOHN WINTERSON





*"...Memory Holds A Cherished Picture..."*

# ATHLETICS





Coach "Bill" Lear

With the leaving of the Navy V-12 unit, Coach "Bill" Lear had very little material with which to work. The outlooks for a successful basketball season were rather gloomy. The team was made up almost entirely of freshmen. They had little or no height and very little or no experience which are needed for a well-rounded team. But with the aid of returning ex-servicemen, Alma gained much needed height and experience. With these men under the excellent guidance of Coach "Bill" Lear and with a determined spirit, they became an improved team and formed a winning combination.

It was in intra-mural basketball that Coach "Bill" Lear probably did his best work. Members of the student body, representing the men of Alma College, met with the coach for the purpose of organizing some intra-mural activity for the men who couldn't make the basketball team. Numerous basketball teams were organized. This intra-mural basketball kept a highly competitive spirit aroused among the men. Approximately one hundred and twenty-five men have been coached with all around knowledge, leadership, and a smile and have gained something that they will never forget or lose.

## Basketball

by Bill Cornwell

Alma College's return to peacetime inter-collegiate basketball was successful. Despite an up and down year, Coach "Bill" Lear's men concluded their 1945-46 season with a record of eight victories and seven defeats.

At the beginning of the season Alma's hopes for a successful season were gloomy. They had no height and no experienced players around which to build a team. But aided by returning war veterans, among them the brilliant Bud Howe, the Scots came through with a winning combination.

Captained by the redoubtable Howe, the Scots consistently presented stiff competition to taller opponents. Handicapped by lack of height, Alma made up for the disadvantage with speed, fast breaks and sharp passing.

The Scots opened the season with a 41-40 triumph over Hillsdale. After dropping a heartbreaking 52-50 decision to the Britons from Albion, the Scots got back into the win column by trimming Ferris Institute, 60-45, and Hope 73 to 60.

Kalamazoo's rangy Hornets thoroughly trounced the Scots, 64 to 41, and Alma then defeated Ferris for the second time, 40 to 32. After downing St. Mary's from Orchard Lake by a 62-55 count, Alma lost three consecutive contests. A tall quintet from Michigan Normal started the parade by trouncing the Scots, 62-46, Albion followed with their second decision of the season over the Scots, 64-47, and Grand Rapids "Calvin" recorded a 55-48 victory.

The Scots then proceeded to win three straight games. They edged past Michigan Normal in a thrilling battle, 57 to 54, and nosed out Grand Rapids "Calvin" in another thriller, 45 to 44. Their final victory of the season was an easy 72 to 54 triumph over Hillsdale. Kalamazoo's courtmen again outlasted the Scots for a 44-38 win, and the high-flying Dutchmen from Hope College closed Alma's season with a crushing 77-53 defeat.

The general sportsmanship, great floor play and brilliant shooting of Bud Howe was invaluable to the team's attack. Regarded as one of the better players in state collegiate basketball circles, Howe was the key man of the team.

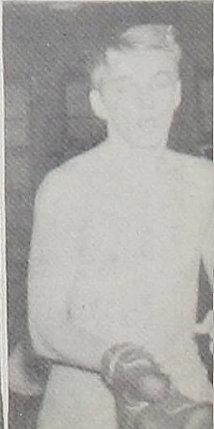
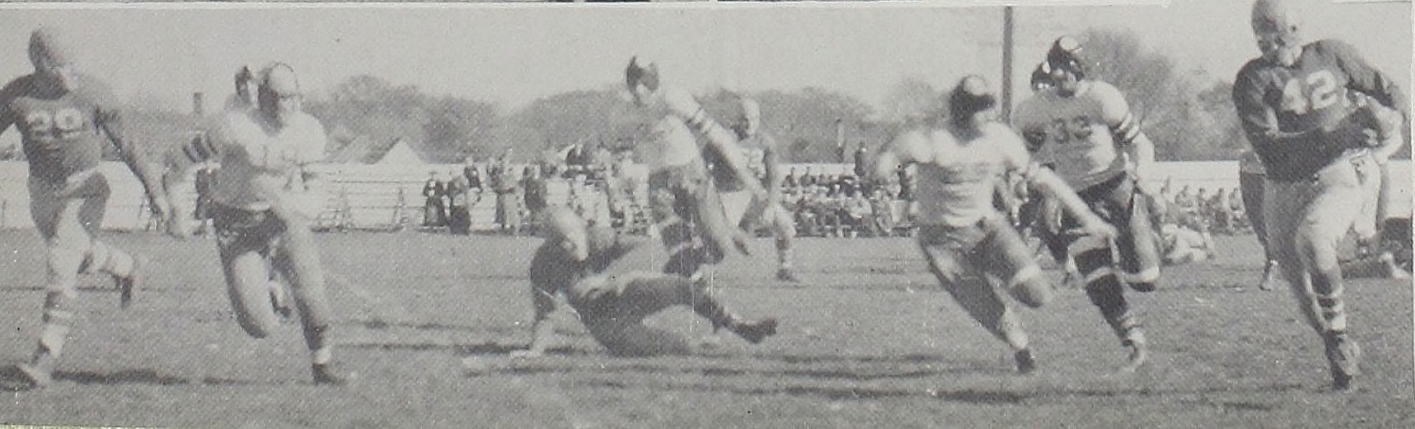
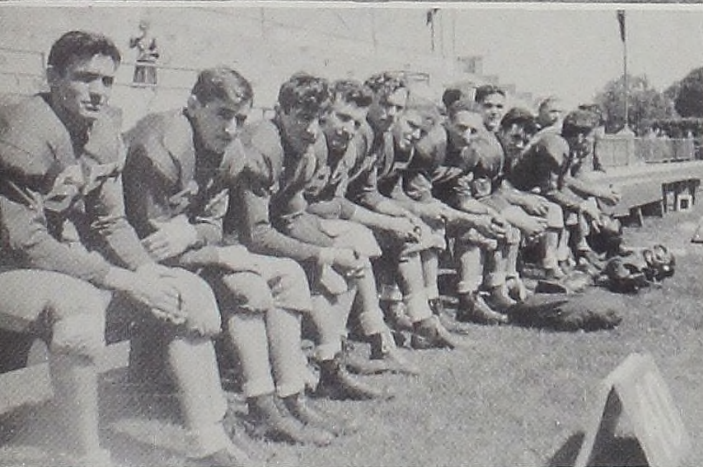
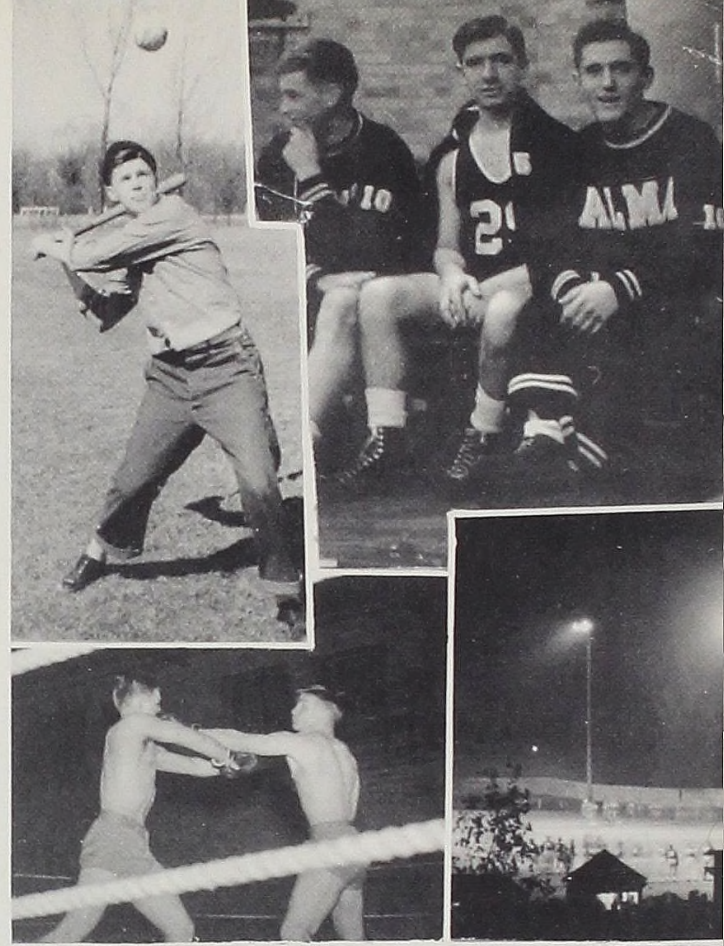
Several other players turned in commendable performances. The accurate shooting of Pete Greenhoe and the fine passing and ball handling of Al McCuaig and Wally Moore were essential to the team's success. The steady play of Cliff Bedford and great performances in late season by Mike Budge also aided greatly. Much credit is also due to Johann, LaFleur, Ebright, Hyde, McCarthy, LaMore, McCarty, Wilkins, Hartt, Teixeira, and VanDuzen for helping maintain Alma's aggressive spirit.

Realizing that a little fun and recreation is essential in maintaining a highly competitive spirit among the men of Alma College, Coach "Bill" Lear and staff carried out plans for an interesting and beneficial intra-mural sports program.

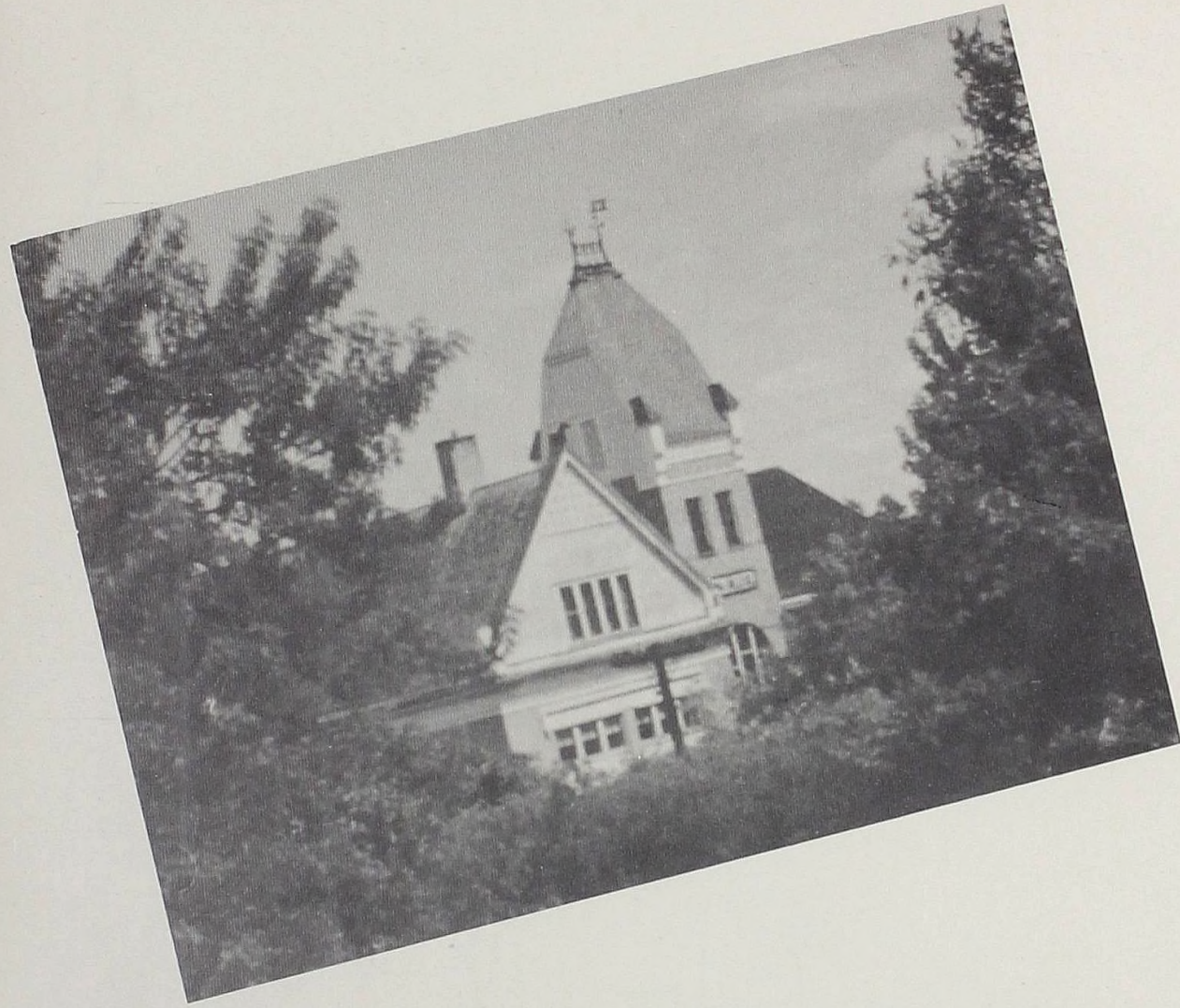
Assisted by members of the Alma College varsity, Coach Lear formed an intra-mural basketball league. The Scots mentor selected four teams, and appointed Johnny Wilkins, Jack Maatch, Jack McCarthy and Don Clark as captains. League play was held during the month of February with six games being fought. The teams captained by Johnny Wilkins, comprised of Bob Bennett, Bill Davis, Jim Minard, Charles Watson, John Kimball and Fred Strauss, captured the championship and was awarded a trophy for its accomplishment.

Other activities, such as football, basketball, volleyball, boxing, wrestling, golf and track — in addition to basketball, kept the spirit among the men high.

I  
N  
T  
R  
A  
-  
M  
U  
R  
A  
L  
S



*"... Jungle, Grove, and Campus Fair ..."*

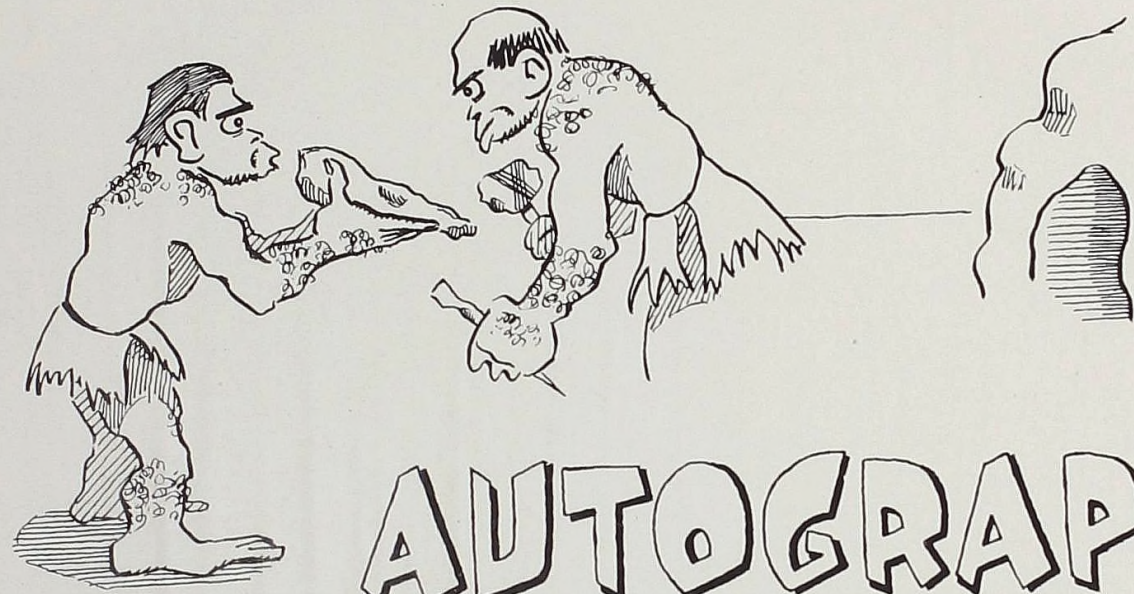


*"... Sons and Daughters Ever Faithful ..."*

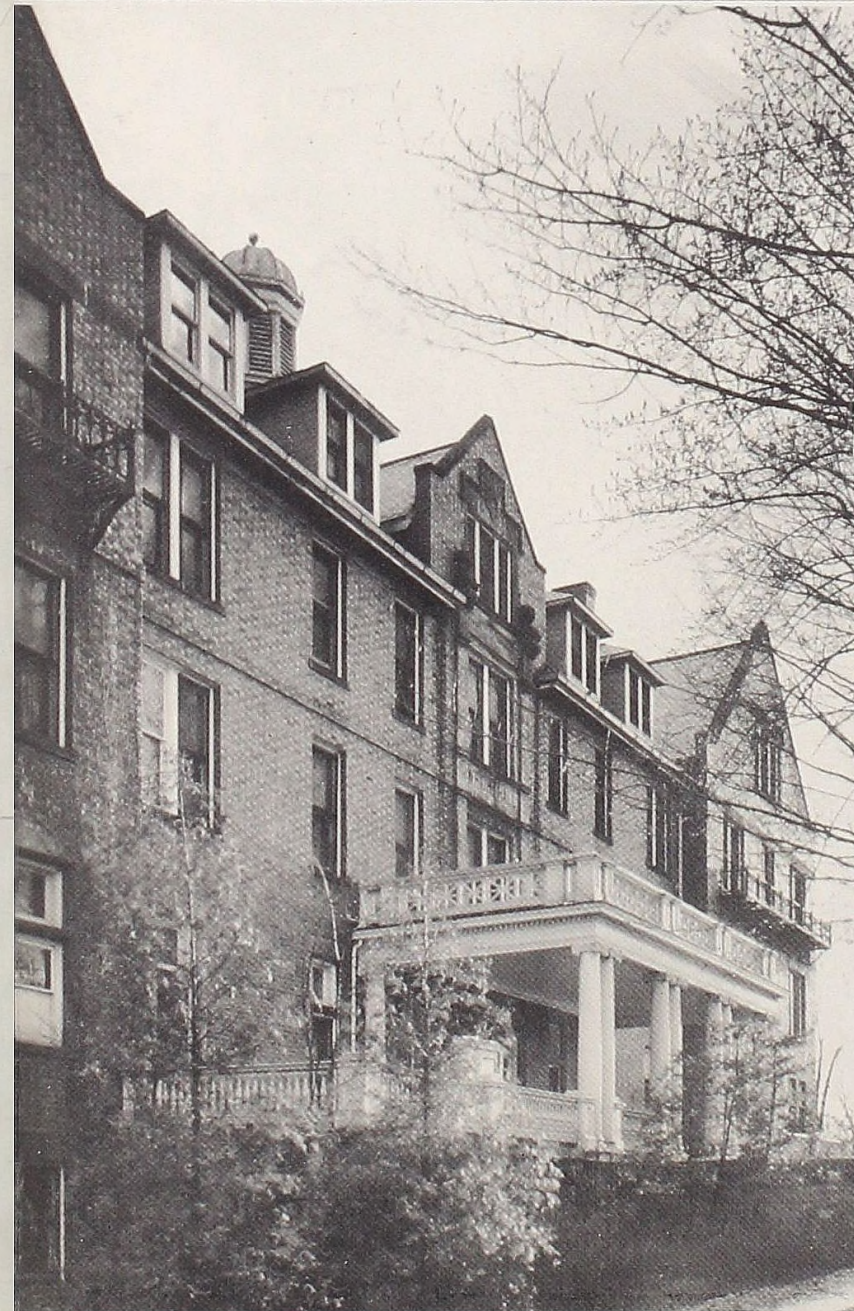
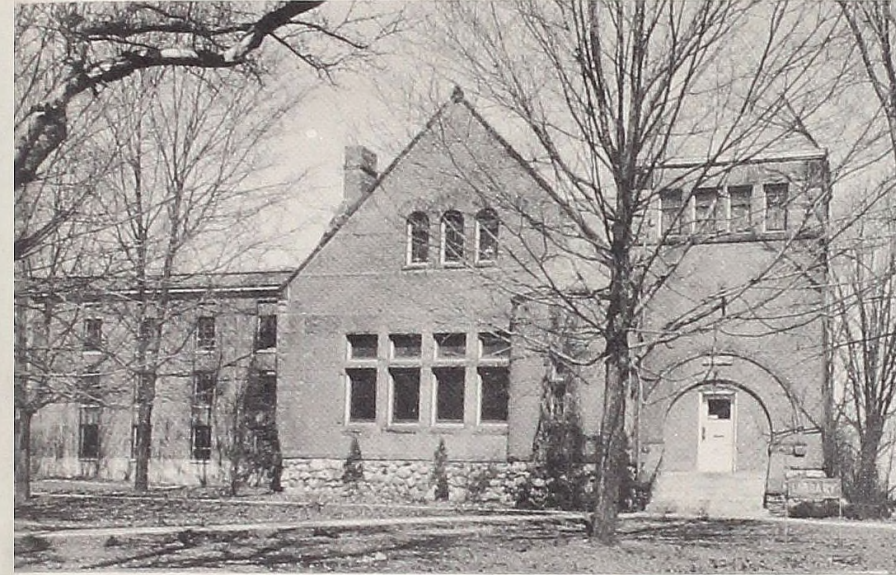


"...Hail Thee One Beyond Compare..."

*Alma, Alma  
Sing of Alma Mater*



**AUTOGRAPH ?**





## Student Directory

Adams, Elizabeth—424 W. Elm, Mason, Mich.  
 Adams, Patricia—Sterling, Mich.  
 Albee, Clare—2270 Isabella, Midland, Mich.  
 Allen, Ardella—705 Woodworth, Alma, Mich.  
 Alward, George—430 W. 9th, Traverse City, Mich.  
 Anderson, Othella—69 Wells, Crosswell, Mich.  
 Angell, Ellen—451 W. Maumee, Adrian, Mich.  
 Atkins, Arlene—7383 Wiegand, Center Line, Mich.  
  
 Barr, David—3026 Solan Heights, Flint 7, R.R. 8, Mich.  
 Bathum, Edgar—14 Mark, Pontiac, Mich.  
 Bedford, Clifford—315 W. Downie, Alma, Mich.  
 Bennett, Robert—G.P.O., East Jordan, Mich.  
 Benson, Merle—Sunfield, Mich.  
 Bigler, Wanda—1006 E. Superior, Alma, Mich.  
 Bird, Charles—401 W. Center, Alma, Mich.  
 Black, Lucile—Standish, Mich.  
 Bond, Arthur—Sumner, Mich.  
 Bonner, Leon—33649 W. 7 Mile Rd., Farmington, Mich.  
 Bourcier, Cyril—414 Gratiot, Alma, Mich.  
 Brett, Joan—407 W. Muir, Hazel Park, Mich.  
 Breu, Wilma—Breckenridge, Mich.  
 Brow, Eleanor—207 Belvedere, Charlevoix, Mich.  
 Brown, Hazel—421 Pearson, Ferndale, Mich.  
 Buck, Virginia—Elsie, Mich.  
 Budge, Melvin—319 N. Jefferson, Ithaca, Mich.  
 Bunting, Barbara—Port Hope, Mich.  
 Burke, Norman—R. 2, Alma, Mich.  
 Burket, Ruth—Alma, Mich.  
 Burns, John—1208 Boston, Flint 31, Mich.  
 Burroughs, Ralph—139 N. Genesee, Pontiac, Mich.  
 Bush, Francis—Sumner, Mich.  
  
 Campbell, Donna—Sandusky, Mich.  
 Carter, Patricia—160 Pine, Elsie, Mich.  
 Chappell, Gerald—107 N. Water, Montpelier, Ohio  
 Church, Lois—846 Grace, Northville, Mich.  
 Clark, Ben—East Jordan, Mich.  
 Clark, Don—303 E. Mill, Capac, Mich.  
 Clarke, Harold—Riverdale, Mich.  
 Codde, Miriam—525 Gratiot, Alma, Mich.  
 Collins, Helen—19699 Irvington, Detroit, Mich.  
 Converse, Donald—605 Pine, Alma, Mich.  
 Cooley, Evalyne—R.F.D. 2, Alma, Mich.  
 Cordes, Janet—411 Eastlawn, Detroit 15, Mich.  
 Cornwell, William—138 E. Oak, Elsie, Mich.  
 Craven, Norman—2032 Joy, Pontiac, Mich.  
 Cross, Lou Ann—No. 5 Jeff, Saginaw, Mich.  
  
 Davis, William—211 S. Hayward, Montgomery, Mich.

Dengler, Carol—812 N. Webster, Saginaw, Mich.  
 Des Autels, Bernice—Glendale, Parchment, Mich.  
 Detloff, Floyd—821 Second, Alma, Mich.  
 De Yonker, Robert—2002 Pierce, Flint, Mich.  
 Dittmar, Shirley—305 Renshaw, Clawson, Mich.  
 Du Bois, Ruth—706 State, Alma, Mich.  
 Dugal, Dorothy—340 W. 7th, Traverse City, Mich.  
  
 Ebright, Harlan—145 Grafton, Alma, Mich.  
 Edgar, Arlan—Ithaca, Mich.  
 Edwards, Elaine—102 Wood, Charlevoix, Mich.  
 Edwards, Ruth—102 Wood, Charlevoix, Mich.  
 Ellis, Betty—625 Owen, Saginaw, Mich.  
 Elston, Dan—1005 Chevrolet, Flint, Mich.  
 Emery, Theodore—1424 Park, Peekskill, N. Y.  
 Everest, Roger—R.F.D., Ithaca, Mich.  
  
 Feagler, Agnes—Edwardsburg, Mich.  
 Fields, Howard—44 Lincoln, Pontiac, Mich.  
 Fischer, Joyce—212 Sherman, Blissfield, Mich.  
 Fischer, Kathryn—15019 Evanston, Detroit, Mich.  
 Fisher, Joyce—406 N. Michigan, Howell, Mich.  
 Fitzpatrick, Helen—9595 Pinehurst, Detroit 4, Mich.  
 Fortino, Betty—319 Gratiot, Alma, Mich.  
  
 Geerling, Kathleen—21 Decker, Fremont, Mich.  
 Gilbert, Albert—Hemlock, Mich.  
 Gillert, George—328 Wheeler, Saginaw, Mich.  
 Girvan, Barbara—218 N. Drive, Wyandotte, Mich.  
 Goodrich, Alan—208 E. Emerson, Ithaca, Mich.  
 Gory, Suzanne—Periqueux, France  
 Gracie, Helen—9919 Lauder, Detroit 27, Mich.  
 Graff, William—1933 N. Charles, Saginaw, Mich.  
 Green, Loris—18300 Steel, Detroit, Mich.  
 Greenawalt, Mary—Hays Rd., R.F.D. 2, Bridgville, Penn.  
 Greenhoe, Jay—414 Hillcrest, Alma, Mich.  
 Grover, Rodney—2581 Pine Lake, R. 3, Pontiac, Mich.  
  
 Harden, Mary—117 N. Andre, Saginaw, Mich.  
 Harmer, Ray—49 Monterey, Pontiac, Mich.  
 Hartley, Betty—714 Perry, Flint, Mich.  
 Hartt, Harold—84 Stout, Pontiac, Mich.  
 Hartt, Warren—84 Stout, Pontiac, Mich.  
 Hawkins, Helen—37 Broadway, Ecorse, Mich.  
 Hawkins, William—1374 Nottingham, Grosse Pointe, Mich.  
 Hayward, Helen—16225 Shaftsbury, Detroit 19, Mich.  
 Heimforth, John—430 Seventh, Traverse City, Mich.

## Student Directory

Henry, Lola—1401 Center, Bay City, Mich.  
 Henry, Burdette—1401 Center, Bay City, Mich.  
 Hicks, James—219 W. Center, Alma, Mich.  
 Hocker, Carmen—33310 E. Jefferson, St. Clair Shores, Mich.  
 Hoffmann, Harry—1931 Hunt Club, Dr., Grosse Pointe, Mich.  
 Holland, Lloyd—78 St. Georges Crescent, Goderich, Ontario  
 Howe, Jack—818 Woodworth, Alma, Mich.  
 Howe, Walter—320 Maple, Alma, Mich.  
 Hunsicker, Sarah—Ithaca, Mich.  
 Hunter, George—320 Maple, Alma, Mich.  
 Hyde, Carroll—1521 E. Colfaz, South Bend 12, Indiana  
  
 Jackson, Williard—207 S. Layton, Dunn, North Carolina  
 Jacobs, Charles—R. 2, Freeland, Mich.  
 Jessup, Virgil—Box 97, Riverdale, Mich.  
 Johann, John—717 Young, Saginaw, Mich.  
 Johnson, Henry—738 Simoneau, Saginaw, Mich.  
 Johnson, Sally—R. 2, Harbor Springs Rd., Harbor Springs, Mich.  
 Jordan, Thomas—15150 Warwick, Detroit, Mich.  
  
 Keith, Mary—138 Ely, Alma, Mich.  
 Kemper, Barbara—1409 McKinstry, Detroit 9, Mich.  
 Kiemle, Arlisle—535 Warren, Flint, Mich.  
 Kimball, John—221 Cutler, DeWitt, Mich.  
 Kirk, Alvan—19292 Canterbury, Detroit, Mich.  
 Kocher, Virginia—16105 Hazelton, Detroit, Mich.  
 Kohler, Louis—215 Park, Charlevoix, Mich.  
 Kolberg, Lucille—5228 Crane, Detroit 13, Mich.  
 Kronberg, Jaqueline—514 W. Seventh, Flint, Mich.  
 Krueger, George—1912 N. Rutherford, Chicago, Ill.  
  
 LaFleur, Hosea—S. Hamilton, Saginaw, Mich.  
 LaMore, Russell—1621 S. Hamilton, Saginaw, Mich.  
 Langin, Godfrey—Box 92, Riverdale, Mich.  
 Larrea, Federico—Montevideo, Uruguay  
 Lee, Billie Jo—Central Lake, Mich.  
 Lieberman, Robert—928 Hoyt, Saginaw, Mich.  
 Lifton, Florence—3035 Baldwin, Detroit, Mich.  
 Lincoln, Norman—9710 W. Outer Dr., Detroit, Mich.  
 Lippert, Orville—520 S. Grover, Alma, Mich.  
 Lott, Joan—R.F.D. 1, Tecumseh, Mich.  
 Luther, Nancy—2015 Handley, Saginaw, Mich.  
 Lyberg, Betty—847 Algonquin, Detroit, Mich.  
  
 McArtor, Ethelyn—33 Court, Harbor Beach, Mich.  
 McCallum, Paula—R.R. 1, Breckenridge, Mich.

McCarthy, Charles—428 E. Jarvis, Hazel Park, Mich.  
 McCarty, Justin—505 Carroll, Saginaw, Mich.  
 McCarty, Marjorie—505 Carroll, Saginaw, Mich.  
 McColley, Milton—Sand Lake, Mich.  
 McConkey, Jack—R. 3, Ithaca, Mich.  
 McCuaig, Alfred—615 Wright, Alma, Mich.  
 McDonald, Fred—921 S. Warren, Saginaw, Mich.  
 McFarland, William—1320 Congress, Saginaw, Mich.  
 McIntyre, Clyde—426 Fifth, Traverse City, Mich.  
 McIntyre, John—718 Wolcott, Flint, Mich.  
 McKinley, Joyce—Gaylord, Mich.  
 MacLeod, Carroll—Baldwin, Mich.  
 McMillen, Floyd—818 Pine, Alma, Mich.  
 Maatsch, Jack—226 W. Linsey, Flint, Mich.  
 Marvin, Margaret—109 N. Porter, Saginaw, Mich.  
 Mattson, Marian—819 E. Third, Royal Oak, Mich.  
 Messecar, Jean—912 Pine, Alma, Mich.  
 Middleton, Amy—17600 Fielding, Detroit 19, Mich.  
 Milham, Barbara—604 Woodworth, Alma, Mich.  
 Milham, Mary—604 Woodworth, Alma, Mich.  
 Miller, John—P. O. Box 42, Mackinaw City, Mich.  
 Miller, Maxine—285 Miller, Sandusky, Mich.  
 Millhensch, Peyton—16191 Fielding, Detroit 19, Mich.  
 Minard, James—414 State, Harbor Beach, Mich.  
 Miner, Doris—3301 Ruckle, Saginaw, Mich.  
 Montgomery, Donald—707 Cedar, Sault Ste. Marie, Mich.  
 Moore, Wallace—Box 124, Middleton, Mich.  
 Moore, William—R.F.D. 3, 123, Traverse City, Mich.  
 Moreno, Edmund—R. 2, Alma, Mich.  
 Morgan, Marion—201 E. Kirby, Detroit, Mich.  
 Mulloy, Althea—807 Gratiot, Alma, Mich.  
 Mulloy, John—807 Gratiot, Alma, Mich.  
  
 Navarre, Frank—525 Gratiot, Alma, Mich.  
 Newman, Stella—202 Orchard, Alma, Mich.  
 Nisbet, Stephen—332 E. Main, Fremont, Mich.  
 Nixon, Robert—2590 Casper, Detroit 9, Mich.  
 Nordstrom, Carl—315 Linn, Bay City, Mich.  
 Oliver, Gerald—626 Washington, Traverse City, Mich.  
 Orstadius, Mary—320 Maple, Alma, Mich.  
 Osterhout, Henry—2146 3rd, Bay City, Mich.  
  
 Palmer, Sara—309 Third, Grand Haven, Mich.  
 Patterson, Jean—1312 Audubon, Grosse Pointe, Mich.  
 Patton, Jane—28219 Felician, Roseville, Mich.  
 Pecor, Charles—12508 Maple, Blue Island, Ill.

## Student Directory

- Perry, Frank—Ithaca, Mich.  
 Peterson, Nels—126 Falor, Breckenridge, Mich.  
 Peterson, Sandra—911 Court, Alma, Mich.  
 Phillips, Arva—703 State, Petoskey, Mich.  
 Phillips, Phyllis—807 Pine, Alma, Mich.  
 Pilson, Patricia—2028 Crooks, Royal Oak, Mich.  
 Pinkerton, Norma—1043 Weadock, Saginaw, Mich.  
 Pitcher, Robert—McBrides, Mich.  
 Pitts, Clifton—236 Midland, Royal Oak, Mich.  
 Pollock, Eda—R.R. 2, Chesterton, Indiana  
 Pollock, Robert—R.R. 2, Chesterton, Indiana  
 Porretta, Louis—506 Chalmers, Detroit, Mich.  
 Powers, Margaret—938 Emily, Saginaw, Mich.  
 Pratt, Elizabeth—Traverse City, R. 1, Mich.
- Richter, Betty—5567 Beaconsfield, Detroit, Mich.  
 Romine, Leatrice—409½ Gratiot, Alma, Mich.  
 Rosendale, Martha—Crystal, Mich.  
 Rowe, Lawrence—19150 Snowden, Detroit 21, Mich.  
 Rutenbar, Edsel—19204 Westmore, Farmington, Mich.
- Sanborn, Dave—2302 Hyland, Ferndale, Mich.  
 Savage, Herbert—1834 Hunt Club Dr., Grosse Pointe, Mich.  
 Scheanwald, Richard—940 Emily, Saginaw, Mich.  
 Schmidt, Shirley—Minden City R.R. 1, Minden City, Mich.  
 Schneider, David—North Star, Mich.  
 Sempsrott, Glenn—12387 Greenlawn, Detroit, Mich.  
 Sette, Charlene—R.F.D. 2, Alma, Mich.  
 Sevier, Jacqueline—4338 Monroe, Ecorse 18, Mich.  
 Shankwiler, Donald—37 Tennyson, Highland Park, Mich.  
 Shaw, Kathleen—9363 Marlowe, Detroit 27, Mich.  
 Shaw, Ruth—9363 Marlowe, Detroit 27, Mich.  
 Slaski, Jean—316 Center, Alma, Mich.  
 Smith, Betty—624 Wright, Alma, Mich.  
 Smith, Harold—1213 Meyers, Hazel Park, Mich.  
 Smith, Howard—R. 1, Davisburg, Mich.  
 Smith, Phyllis H.—737 Massachusetts, Alma, Mich.  
 Smith Phyllis N.—2405 Ashman, Midland, Mich.  
 Snively, George—46 Brevoort, Columbus, Ohio  
 Snow, Betty—502 Main, Northville, Mich.  
 Snow, Linwood—502 Main, Northville, Mich.  
 Snyder, Dorothy—107 Rockingham, Alma, Mich.  
 Spadafore, Frank—33 Main, Three Rivers, Mich.  
 Stamas, George—417 Gratiot, Alma, Mich.  
 Steven, Phyllis—14581 Tacoma, Detroit, Mich.  
 Stackwell, Harold—1015 River, Alma, Mich.  
 Stover, Jessie—326 Mt. Vernon, Detroit 2, Mich.
- Strauss, Frederick—16205 Normandy, Detroit, Mich.  
 Stuart, Ellen—524 State, Alma, Mich.  
 Stuart, Helen—524 State, Alma, Mich.  
 Swalla, Donald—715 Franklin, Flint 3, Mich.
- Taylor, Ronald—3012 22nd, Wyandotte, Mich.  
 Teeter, Glenn—Mt. Carroll, Mt. Carroll, Ill.  
 Teixeira, Arthur—Box 928, Santa Maria, Calif.  
 Thomas, Chas.—R.F.D., Ithaca, Mich.  
 Thompson, Mary Ellen—Sandy Beach, Diamond Lake, Cassopolis, Mich.  
 Tobey, Donald—316 W. 10th, Traverse City, Mich.  
 Tobin, A. Bertille—611 Center, Alma, Mich.  
 Tobin, George—611 Center, Alma, Mich.  
 Tobin, John—611 Center, Alma, Mich.  
 Trissel, Paul—728 Pine, Alma, Mich.  
 True, D. Joan—421 Garden, Harbor Beach, Mich.  
 Trueman, Jean—13010 Glenfield, Detroit 5, Mich.  
 Tyron, Willard—R.R. 2, Wheeler, Mich.
- Van Amberg, Lawrence—204 Elmwood, Traverse City, Mich.  
 VanAuken, Clifford—526 College, Alma, Mich.  
 VanDuzen, Duane—203 Washington, Belding, Mich.  
 Vaughan, Dorothy—211 7th, Traverse City, Mich.
- Waggoner, Richard—313 Saginaw, St. Louis, Mich.  
 Walsh, David—5323 Seebaldt, Detroit, Mich.  
 Watson, Charles—Western 2989, Detroit, Mich.  
 Watson, Margaret—Western 2989, Detroit, Mich.  
 Welsford, Berdella—R. 2, Alma, Mich.  
 Wessel, Grant—1339 Sheridan, Saginaw, Mich.  
 Whalin, Raymond—408 Linton, Saginaw, Mich.  
 White, Mary—32940 Warren, Wayne, Mich.  
 White, Richard—Box 426, Ithaca, Mich.  
 Whiting, Elizabeth—Standish, Mich.  
 Whitman, Robert—514 Center, Alma, Mich.  
 Wilbur, Janet—525 Cherry, Petoskey, Mich.  
 Wilke, Marjorie—10187 Traverse, Detroit 13, Mich.  
 Wilkins, F. John—526 Superior, Alma, Mich.  
 Wilson, Frank—Box 214, R. 2, Royal Oak, Mich.  
 Wilson, Nettie—28577 Fairfax, Royal Oak, Mich.  
 Winewica, Albert—25th 705, Detroit, Mich.  
 Winship, Jean—Alba, Mich.  
 Winston, Beverly—17392 Ilene, Detroit, Mich.  
 Winterson, John—34836 Sims, Wayne, Mich.  
 Wolbers, Ralph—230 Third, Saginaw, Mich.  
 Woodley, Peggy—823 Superior, Alma, Mich.  
 Woodruff, Howard—Main, DeWitt, Mich.  
 Wunderlich, Marge—18935 Parkside, Detroit, Mich.
- Yoh, Harry—23 Washington, Clarkston, Mich.

## Acknowledgments

Dear Reader:

Too often the college student calls for his copy of the Scotsman, enjoys its record in both pictorial and written form, and goes away thinking he has received something for which he has completely paid. He does not appreciate the fact that what he pays has only paid a part of the cost of publication. Publication of the book depended upon many factors for which I would like to give special acknowledgment.

Many of the merchants of Alma with whom the college does business derive a considerable source of benefit from connections with the college. Nevertheless, it is these same merchants who make the yearbook possible, and we ask you to do your share and keep them in mind when you are contemplating future purchases. Let them know you appreciate their generous co-operation which has made a better yearbook possible.

We, the staff of the 1946 Scotsman, hereby gratefully offer our appreciation to the following who have materially aided in the production of this book.

MR. W. H. BARTON, Welch Company representative for his time and ideas.

MISS MAURINE STOVALL, for her fine photography and her cooperation in getting equipment and supplies.

W. M. WELCH Manufacturing Co., for the cover.

W. M. WELCH Manufacturing Co., for the printing.

CAPITAL TYPE, for linotype composition.

THE STUDENT BODY, for its whole-hearted cooperation.

### ADVERTISERS

Alma Record  
 Ren Smith  
 Compton Dress Shop  
 Alma Cleaners  
 Joynt Auto Parts  
 Church's Jeweler  
 Modern Cleaners  
 Alma Recreation  
 State Restaurant  
 Simi's Restaurant  
 Rexall Drugs  
 Doud's Drugs  
 Alma Dairy  
 Alma City Cleaners  
 Sawkins

Wright Hotel  
 Caple's Flower Shop  
 Varsity Shop  
 Rademacher Motor Sales  
 L. P. Schneider & Sons  
 Geller's Jewelers  
 Martin Stores  
 Roslund Gulf  
 Alma City Bank  
 Alma Theaters  
 First State Bank  
 Gittleman's  
 Leonard's, Inc.  
 J. P. Bickert's  
 Townsend's Flowers



ALMA COLLEGE LIBRARY  
  
3 3190 00416 6161

